



---

# Customer information packet

## EFM4104T

30HP, 1770RPM, 3PH, 60HZ, 286T, 1056M, TEFC, F2

Class - None

Division - Not Applicable

## Specifications

Enclosure	TEFC
Frame	286T
Frame Material	Iron
Frequency	60.00 Hz
Haz Area Class and Group	None
Haz Area Division	Not Applicable
Motor Letter Type	Three Phase
Output @ Frequency	30.000 HP @ 60 HZ
Phase	3
Synchronous Speed @ Frequency	1800 RPM @ 60 HZ
Voltage @ Frequency	230.0 V @ 60 HZ 460.0 V @ 60 HZ
Agency Approvals	CSA EEV NEMA PREMIUM NEMA_PREMIUM UR
Ambient Temperature	40 °C
Auxillary Box	No Auxillary Box
Auxillary Box Lead Termination	None
Base Indicator	Rigid
Bearing Grease Type	Polyrex EM (-20F +300F)
Blower	None
Current @ Voltage	76.000 A @ 208.0 V 72.000 A @ 230.0 V 36.000 A @ 460.0 V
Design Code	A
Drip Cover	No Drip Cover
Duty Rating	CONT
Efficiency @ 100% Load	93.6 %
Electrically Isolated Bearing	Not Electrically Isolated
Feedback Device	NO FEEDBACK
Front Face Code	Standard

## Part detail

Revision	Y
Type	AC
Mech. spec.	10C156
Base	
Status	PRD/A
Elec. spec.	10WGY758
Layout	10LYC156
Eff. date	06-27-2024
CD Diagram	CD0005
Poles	04
Leads	9#10
Proprietary	False
Created date	04-29-2010

Front Shaft Indicator	None
Heater Indicator	No Heater
High Voltage Full Load Amps	36.0 a
Insulation Class	F
Inverter Code	Inverter Ready
KVA Code	G
Lifting Lugs	Standard Lifting Lugs
Locked Bearing Indicator	Locked Bearing
Motor Lead Exit	Ko Box
Motor Lead Quantity/Wire Size	9 @ 10 AWG
Motor Lead Termination	Flying Leads
Motor Standards	NEMA
Motor Type	1056M
Mounting Arrangement	F2
Number of Poles	4
Overall Length	27.81 IN
Power Factor	83
Product Family	General Purpose
Pulley End Bearing Type	Ball
Pulley Face Code	Standard
Pulley Shaft Indicator	Standard
Rodent Screen	None
RoHS Status	ROHS NON-COMPLIANT
Service Factor	1.15
Shaft Diameter	1.875 IN
Shaft Extension Location	Pulley End
Shaft Ground Indicator	No Shaft Grounding
Shaft Rotation	Reversible
Shaft Slinger Indicator	Shaft Slinger
Speed	1770 rpm
Speed Code	Single Speed
Starting Method	Direct on line
Thermal Device - Bearing	None
Thermal Device - Winding	Normally Closed Thermostat

<b>Vibration Sensor Indicator</b>	<b>No Vibration Sensor</b>
<b>Winding Thermal 1</b>	<b>None</b>
<b>Winding Thermal 2</b>	<b>None</b>

**Nameplate**

**NP3443L**

<b>CAT.NO.</b>	EFM4104T	<b>CUST. P/N</b>				<b>ENCL</b>	<b>TEFC</b>
<b>SPEC.</b>	10C156Y758G1	<b>CC</b>	010A	<b>FRAME</b>	286T	<b>SER.NO.</b>	
<b>HP</b>	30	<b>CLASS</b>		F	<b>HZ</b>	60	
<b>R.P.M.</b>	1770	<b>PH</b>	3	<b>DES</b>	A		
<b>VOLTS</b>	230/460	<b>CODE</b>		G	<b>ODE BRG</b>	6309	<b>DE BRG</b> 6311
<b>AMPS</b>	72/36						
<b>RATING</b>	40C AMB-CONT	<b>NEMA NOM. EFF.</b>			93.6	<b>GREASE</b>	POLYREX EM
<b>P.F.</b>	83	<b>SER.F.</b>	1.15	<b>VPWM INVERTER READY</b>			
<b>HTR-VOLTS</b>		<b>HTR-AMPS</b>		<b>HTR-WATTS</b>			

**Accessories**

<b>Part number</b>	<b>Description</b>	<b>Multiplier</b>
10-1305	C FACE KIT	A8
10EP1502A01SP	D-FLANGE KIT	A8

**AC Induction Motor Performance Data**

Record # 30986

Typical performance - not guaranteed values

<b>Winding: 10WGY758-R001</b>		<b>Type: 1056M</b>		<b>Enclosure: TEFC</b>	
<b>Nameplate Data</b>			<b>460 V, 60 Hz: High Voltage Connection</b>		
<b>Rated Output (HP)</b>	30	<b>Full Load Torque</b>	89.1 LB-FT		
<b>Volts</b>	230/460	<b>Start Configuration</b>	direct on line		
<b>Full Load Amps</b>	72/36	<b>Breakdown Torque</b>	270 LB-FT		
<b>R.P.M.</b>	1770	<b>Pull-up Torque</b>	128 LB-FT		
<b>Hz</b>	60 <b>Phase</b>	3	<b>Locked-rotor Torque</b>	145 LB-FT	
<b>NEMA Design Code</b>	<b>B KVA Code</b>	G	<b>Starting Current</b>	235 A	
<b>Service Factor (S.F.)</b>		1.15	<b>No-load Current</b>	15.9 A	
<b>NEMA Nom. Eff.</b>	93.6 <b>Power Factor</b>	83	<b>Line-line Res. @ 25°C</b>	0.226 Ω	
<b>Rating - Duty</b>	40C AMB-CONT		<b>Temp. Rise @ Rated Load</b>	57°C	
<b>S.F. Amps</b>			<b>Temp. Rise @ S.F. Load</b>	70°C	
			<b>Locked-rotor Power Factor</b>	32	
			<b>Rotor inertia</b>	4.45 LB-FT <sup>2</sup>	

**Load Characteristics 460 V, 60 Hz, 30 HP**

<b>% of Rated Load</b>	<b>25</b>	<b>50</b>	<b>75</b>	<b>100</b>	<b>125</b>	<b>150</b>	<b>S.F.</b>
<b>Power Factor</b>	44	66	75	83	83	83	83
<b>Efficiency</b>	90.6	93.7	94.3	94	93.2	93	93.6
<b>Speed</b>	1794	1787	1781	1774	1766	1757	1769
<b>Line amperes</b>	17.9	23	30.1	36.2	45.3	54.5	41.7

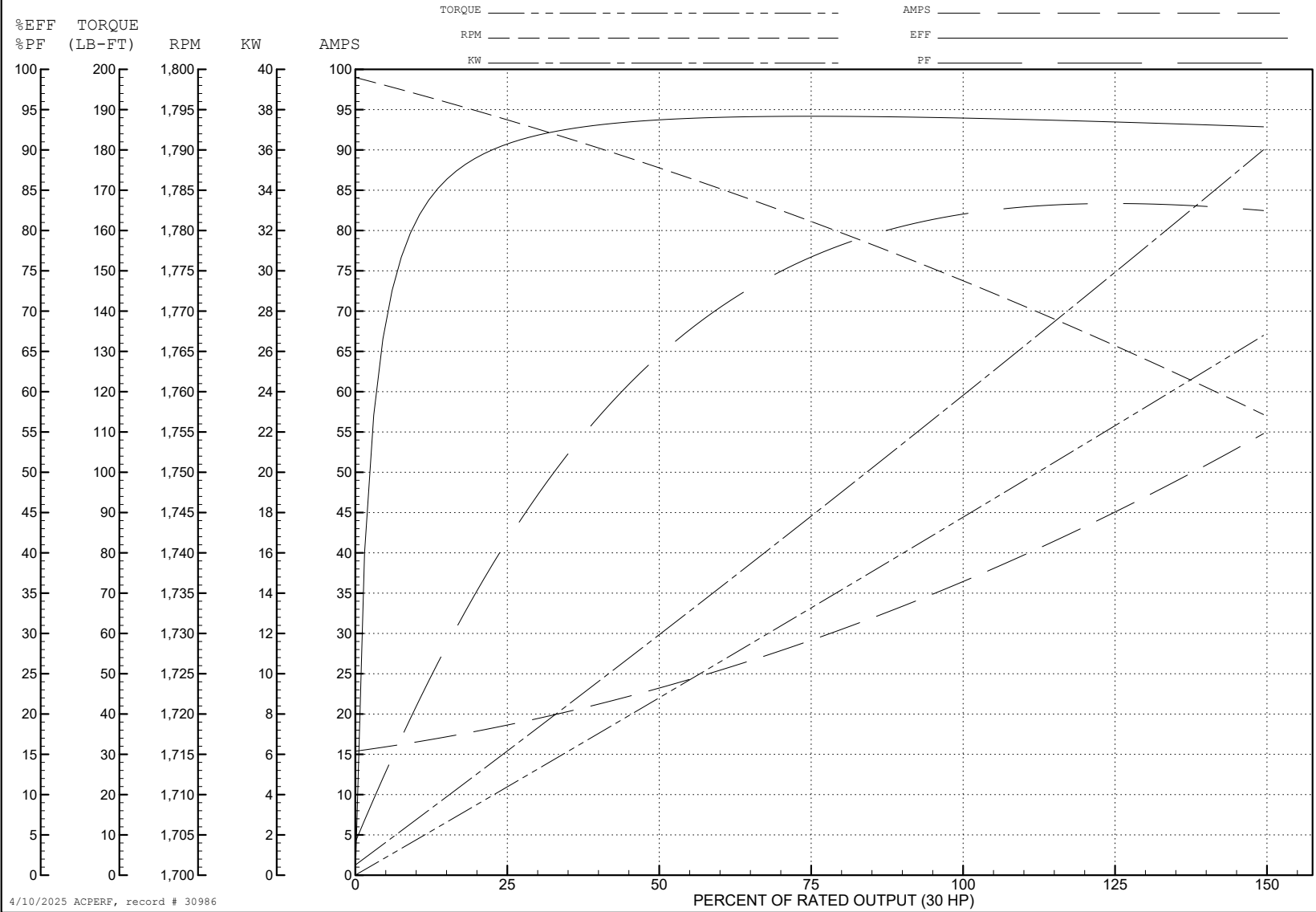
ABB Motors and Mechanical Inc.

WINDING # 10WGY758

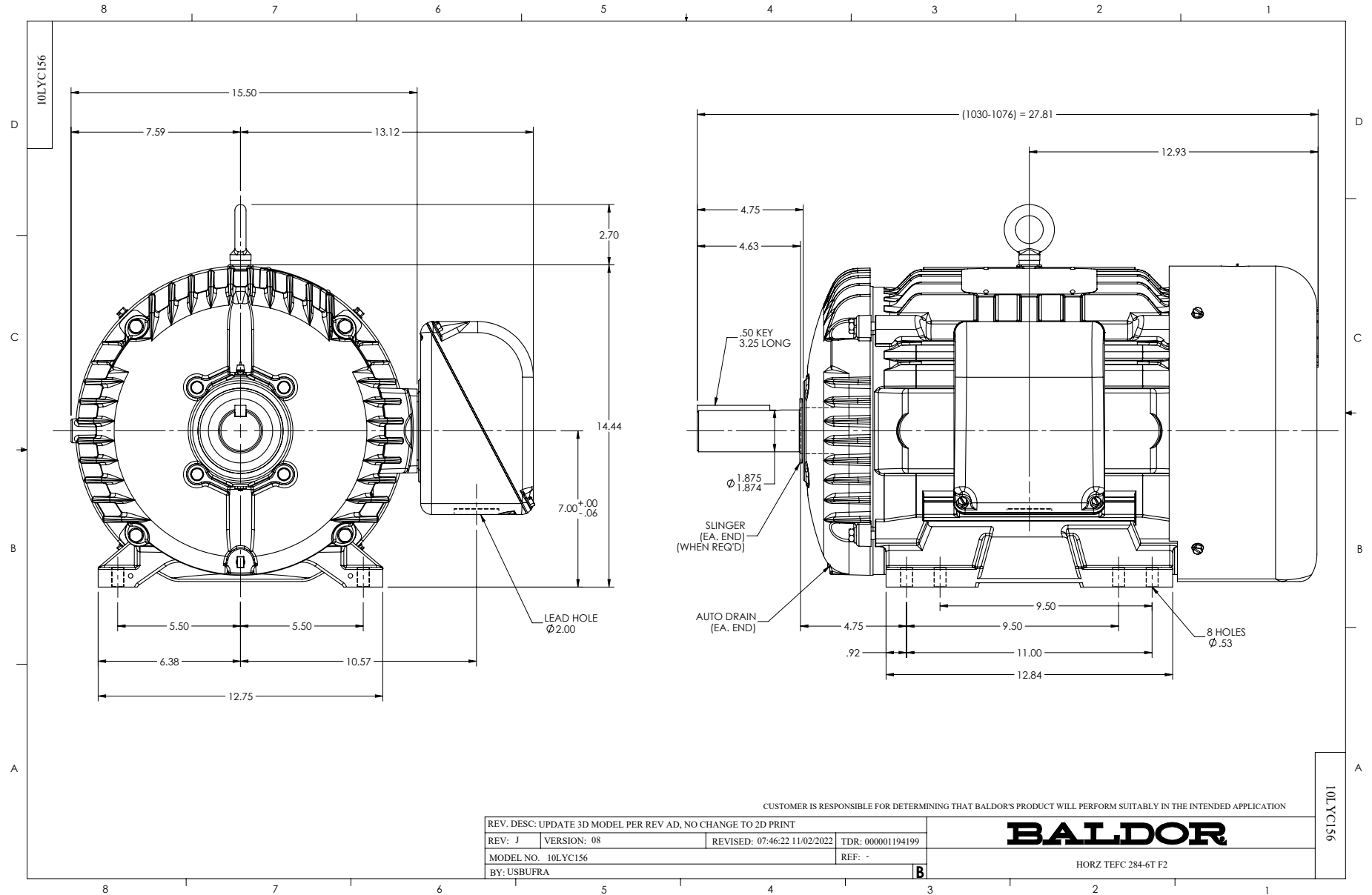
Typical performance - not guaranteed values.

30 HP 3 PH 60 HZ 1770 RPM 460 V 1056M

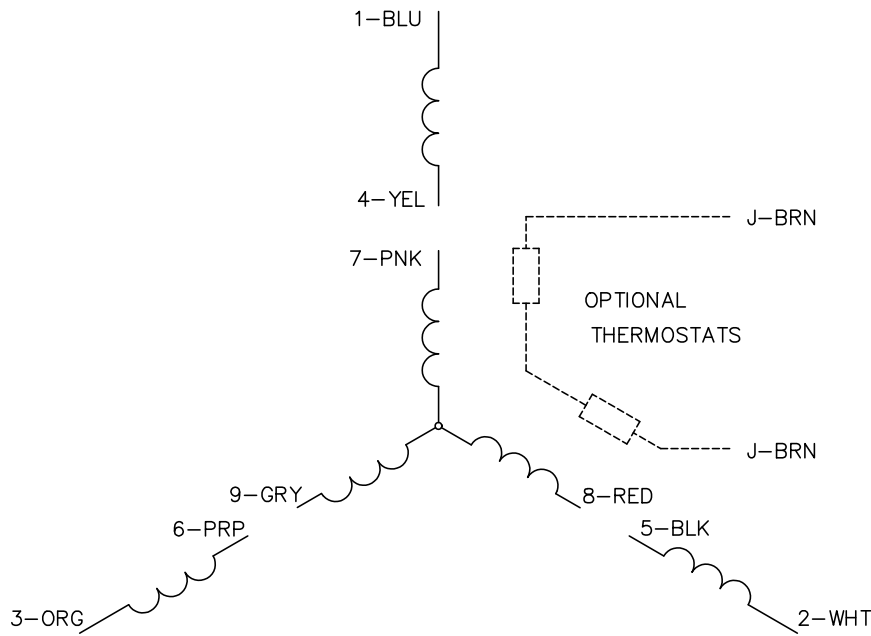
TORQUES (LB-FT): PO=270 PU=128 LR=145 LRA=235



4/10/2025 ACPERF, record # 30986



CD0005

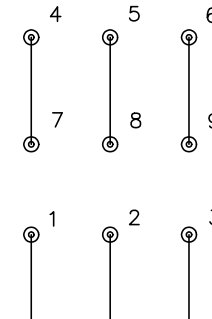


LOW VOLTAGE  
(2Y)



LINE

HIGH VOLTAGE  
(1Y)



LINE

NOTES:

1. INTERCHANGE ANY TWO LINE LEADS TO REVERSE ROTATION.
2. OPTIONAL THERMOSTATS ARE PROVIDED WHEN SPECIFIED.
3. ACTUAL NUMBER OF INTERNAL PARALLEL CIRCUITS MAY BE A MULTIPLE OF THOSE SHOWN ABOVE.
4. LEAD COLORS ARE OPTIONAL. LEADS MUST ALWAYS BE NUMBERED AS SHOWN.

CD0005

REV. DESC: REVISE TO SHOW OPTIONAL COLORS			
REV. LTR: E	BY: JLP	REVISED: 01/19/99 10:15	TDR: 0171435
S00000		FILE: AAA00005140	MDL: -
		MTL: -	

**BALDOR ELECTRIC Co.**

3PH, DV, 9 LEADS