

BALDOR • RELIANCE

Customer information packet

EFM4308T

40HP, 1190RPM, 3PH, 60HZ, 364T, A36062M, TEFC

Class - None

Division - Not Applicable

Specifications

Enclosure	TEFC
Frame	364T
Frame Material	Iron
Frequency	60.00 Hz
Haz Area Class and Group	None
Haz Area Division	Not Applicable
Motor Letter Type	Three Phase
Output @ Frequency	40.000 HP @ 60 HZ
Phase	3
Synchronous Speed @ Frequency	1200 RPM @ 60 HZ
Voltage @ Frequency	230.0 V @ 60 HZ 460.0 V @ 60 HZ
Agency Approvals	NEMA PREMIUM NEMA_PREMIUM UR CCSAUSEEV
Ambient Temperature	40 °C
Auxillary Box	No Auxillary Box
Base Indicator	Rigid
Bearing Grease Type	Polyrex EM (-20F +300F)
Current @ Voltage	107.000 A @ 208.0 V 49.800 A @ 460.0 V 99.600 A @ 230.0 V
Design Code	B
Drip Cover	No Drip Cover
Duty Rating	CONT
Efficiency @ 100% Load	94.1 %
Feedback Device	NO FEEDBACK
Heater Indicator	No Heater
High Voltage Full Load Amps	49.8 a
Insulation Class	F
Inverter Code	Inverter Ready

Part detail

Revision	U
Type	AC
Mech. spec.	
Base	
Status	PRD/A
Elec. spec.	A36WG1194
Layout	617428-078
Eff. date	07-08-2024
CD Diagram	416820-002
Poles	06
Leads	3#4,6#6
Proprietary	False
Created date	06-06-2014

IP Rating	NONE
KVA Code	G
Lifting Lugs	Standard Lifting Lugs
Max Speed	1800 rpm
Motor Lead Quantity/Wire Size	3 @ 4 AWG
Motor Standards	NEMA
Motor Type	A36062M
Mounting Arrangement	F2
Number of Poles	6
Overall Length	33.48 IN
Power Factor	80
Pulley End Bearing Type	Ball
Pulley Face Code	Standard
Service Factor	1.15
Shaft Diameter	2.375 IN
Shaft Ground Indicator	No Shaft Grounding
Shaft Rotation	Reversible
Shaft Slinger Indicator	No Slinger
Speed	1190 rpm
Speed Code	Single Speed
Starting Method	Direct on line
Thermal Device - Bearing	None
Thermal Device - Winding	None

Nameplate

NP3979LUA

CAT #	EFM4308T		SER			CC	010A						
SPEC	A36-5525-1194		RATING	40C AMB-CONT									
HZ	VOLTS		AMPS		RPM	HP	CODE	-	SF	DES	PF	NEMA NOM. EFF	
60	230/460		99.6/49.8		1190	40	G	-	1.15	B	80 %	94.1 %	
	-										%		%
PH	3	CL	F	MAX CORR KVAR		12							
BRG	DE	6313	ODE	6313	ENCL	TEFC	FR	364T			IP54		
GREASE	POLYREX EM					MTR WT	855	LBS					
USABLE AT	50HZ 30HP 190/380V 98/49A					SF1.0							
INVERTER DUTY	CT	15-60	HZ	4:1	VT	3-60	HZ	20:1	CHP	60-90	HZ	1.5:1	1.0 SF VPWM
MAX RPM	1800	SFA 113/56.3											

AC induction motor performance data

Record #93159 - Typical performance - not guaranteed values

Winding	A36WG1194
Type	A3662M
Enclosure	TEFC

Nameplate data

Rated Output			40
Volts			230/460
Full Load Amps			99.6/49.8
R.P.M.			1190
Hz	60	Phase	3
KVA Code			G
S.F.			1.15
NEMA Nom. Eff.	94.1	Power Factor	80
Duty			CONT
S.F. Amps			

460 V, 60 Hz:

High Voltage Connection

Full Load Torque	176.8 LB-FT
Start Configuration	direct on line
Breakdown Torque	514 LB-FT
Pull-up Torque	266 LB-FT
Locked-rotor Torque	335 LB-FT
Starting Current	312 A
No-load Current	18.7
Line-line Res. @ 25°C	0.14922 Ω
Temp. Rise @ Rated Load	43°C
Temp. Rise @ S.F. Load	51°C
Locked-rotor Power Factor	25.4
Rotor inertia	0

Load Characteristics 460 V, 60 Hz, 40 HP

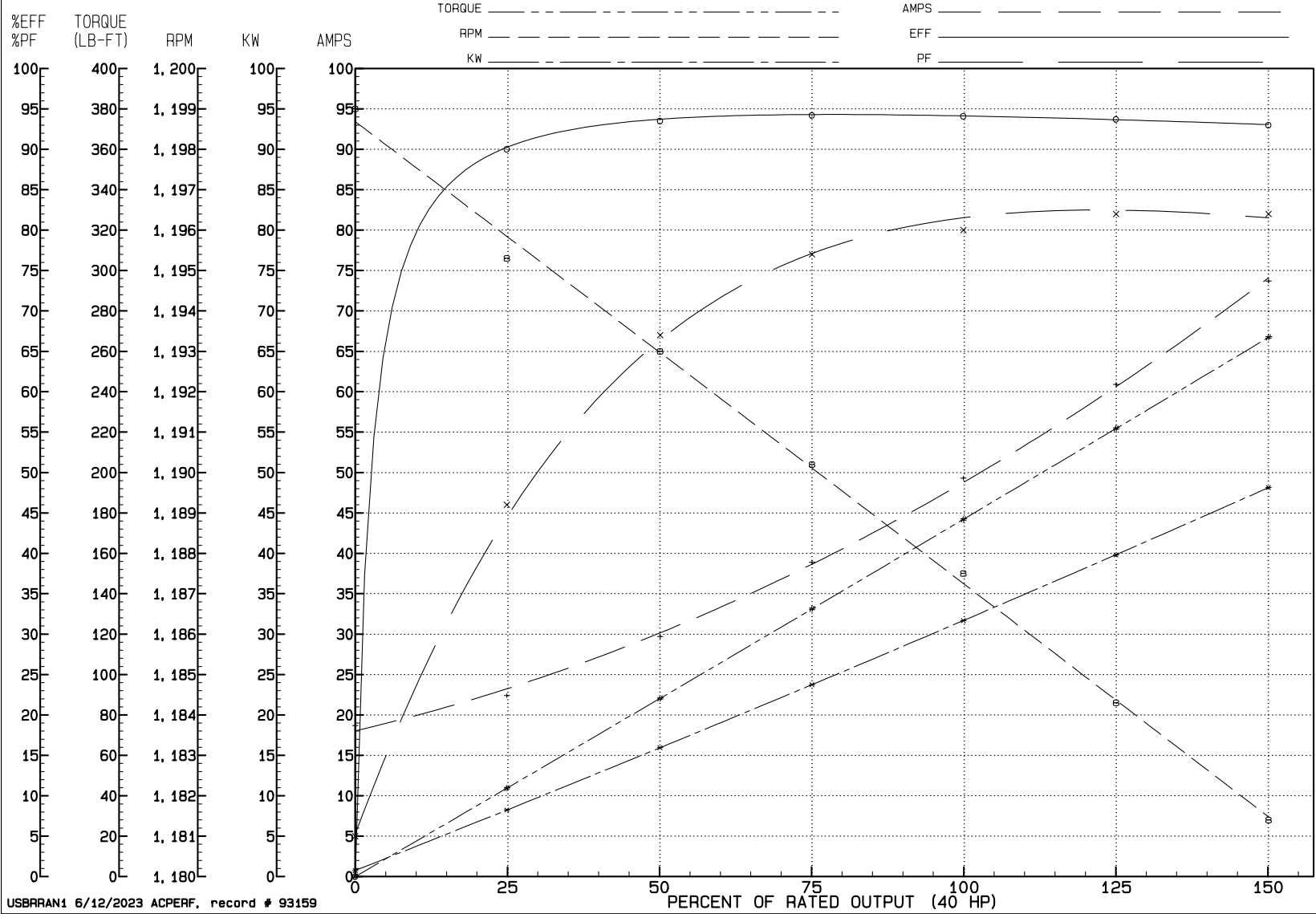
% of Rated Load	NL	25	50	75	100	125	150	SF
Power Factor	5	46	67	77	80	82	82	81
Efficiency	0	90	93.5	94.2	94.1	93.7	93	93.9
Speed	1199	1195.3	1193	1190.2	1187.5	1184.3	1181.4	1186
Line amperes	18.7	22.4	29.7	38.9	49.3	60.9	73.7	56.3

REVIEW

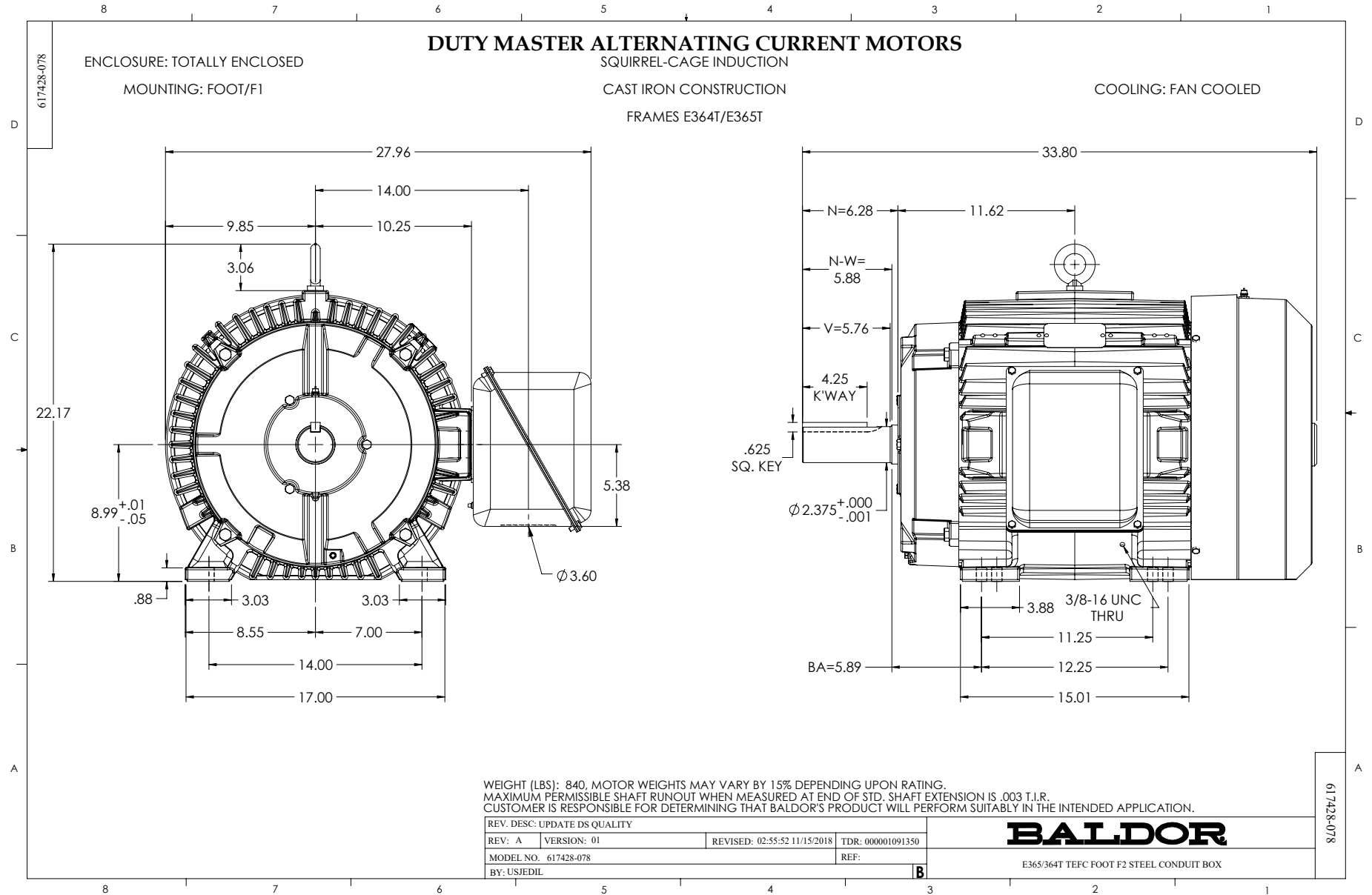
WINDING # A36WG1194

40 HP 3 PH 60 HZ 1190 RPM 460 V A3662M

TORQUES (LB-FT): P0=514.00 PU=266.00 LR=335.00 LRA=312.00

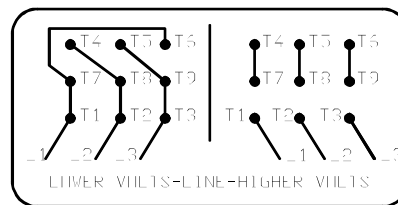
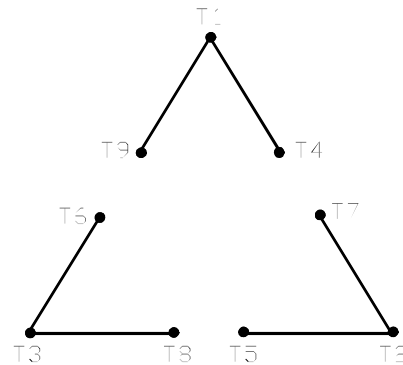


USBRRAN1 6/12/2023 ACPERF, record # 93159



416820-002

A-C MOTOR
 CONNECTION DIAGRAM
 STANDARD 9 LEAD DELTA-CONNECTED



(N.P. 1575-B)

416820-002

REV. DESC: FONT CHANGE FOR PDF SEARCHABLE		
REV. LTR: A	VERSION: 01	TDR: 000001009382
FILE: \MGA\00000\661	REVISED: 02:46:19 02/13/2020	BY: MGHMTT
MTL: -	© □	

BALDOR - RELIANCE®

CONN DIAG - STANDARD 9 LEAD, DELTA-CONNECTED

SH 1 of 1