

BALDOR® • RELIANCE 

Product Information Packet

EIM3540A-P

1HP,1740//1430RPM,3PH,60//50HZ,56YZ,3524

Part Detail							
Revision:	B	Status:	PRD/A	Change #:		Proprietary:	No
Type:	AC	Elec. Spec:	35WGL503	CD Diagram:	CD0003	Mfg Plant:	
Mech. Spec:	35K666	Layout:	35LYK666	Poles:	04	Created Date:	02-24-2016
Base:	N	Eff. Date:	05-03-2017	Leads:	3#18 SEE NOTES		Y

Specs			
Catalog Number:	EIM3540A-P	Insulation Class:	F
Enclosure:	TENV	Inverter Code:	Inverter Ready
Frame:	56YZ	KVA Code:	M
Frame Material:	Steel	Lifting Lugs:	No Lifting Lugs
Output @ Frequency:	1.000 HP @ 60 HZ	Locked Bearing Indicator:	No Locked Bearing
	1.000 HP @ 50 HZ	Motor Lead Quantity/Wire Size:	3 @ 18 AWG
Synchronous Speed @ Frequency:	1500 RPM @ 50 HZ	Motor Lead Exit:	Lead Hole
Voltage @ Frequency:	380.0 V @ 50 HZ	Motor Lead Termination:	Flying Leads
	460.0 V @ 60 HZ	Motor Type:	3524M
XP Class and Group:	None	Mounting Arrangement:	F1
XP Division:	Not Applicable	Power Factor:	76
Agency Approvals:	UR	Product Family:	General Purpose
	CSA EEV	Pulley End Bearing Type:	No Bearing
	CSA	Pulley Face Code:	No Endplate
Auxillary Box:	No Auxillary Box	Pulley Shaft Indicator:	Pump Coupling Shaft
Auxillary Box Lead Termination:	None	Rodent Screen:	None
Base Indicator:	No Mounting	RoHS Status:	ROHS COMPLIANT
Bearing Grease Type:	Polyrex EM (-20F +300F)	Shaft Extension Location:	Pulley End

Blower:	None	Shaft Ground Indicator:	No Shaft Grounding
Current @ Voltage:	1.500 A @ 460.0 V	Shaft Rotation:	Reversible
	1.700 A @ 380.0 V	Shaft Slinger Indicator:	No Slinger
Design Code:	B	Speed Code:	Single Speed
Drip Cover:	No Drip Cover	Motor Standards:	NEMA
Duty Rating:	CONT	Starting Method:	Direct on line
Electrically Isolated Bearing:	Not Electrically Isolated	Thermal Device - Bearing:	None
Feedback Device:	NO FEEDBACK	Thermal Device - Winding:	None
Front Face Code:	Standard	Vibration Sensor Indicator:	No Vibration Sensor
Front Shaft Indicator:	None	Winding Thermal 1:	Automatic Thermal Overload
Heater Indicator:	No Heater	Winding Thermal 1 Location:	ES
		Winding Thermal 2:	None

Nameplate NP3126L										
CAT.NO.	EIM3540A-P									
SPEC.	35K666L503G1									
HP	1									
VOLTS	460//380									
AMP	1.5//1.7									
RPM	1740//1430									
FRAME	56YZ				HZ	60//50			PH	3
SER.F.	1.00		CODE	M	DES	B		CL	F	
NEMA-NOM-EFF	85.5		PF	76						
RATING	40C AMB-CONT									
CC	010A				USABLE AT 208V					
DE					ODE	6203				
ENCL	TENV		SN							
	THERMALLY PROTECTED									

Parts List		
Part Number	Description	Quantity
SA315729	SA 35K666L503G1	1.000 EA
RA303266	RA 35K666L503G1	1.000 EA
TPMYJ43KR	THERMAL 3PH .75 AUT 135 X	1.000 EA
11XW1032G06	10-32 X .38, TAPTITE II, HEX WSHR SLTD U	1.000 EA
WD1000B17	T&B CX35TN TERMINAL	1.000 EA
MK6000A05	1/4 ID X .031 THICK TUBINNEOPREME NON-CO	1.000 FT
HW5100A03	WAVY WASHER (W1543-017)	2.000 EA
35EP3107A04	FR ENDPLATE, MACH	1.000 EA
35CB4505	CONDUIT BOX LID, STAMPED FOR VALMONT	1.000 EA
35GS1009	GASKET, LID 1/16" NEOPRENE	1.000 EA
51XW2520A12	.25-20 X .75, TAPTITE II, HEX WSHR SLTD	4.000 EA
WD4102A01	SR-6L-1 HEYCO STRN RELIEF OR 23MPO6L10 M	1.000 EA
HA3101A65	THRUBOLT 1/4-20 X 9.250 DEMBY	3.000 EA
HW1017A25	600-0101-.250 STATO-SEAL WA (SEAL)	6.000 EA
LB7005	REPLACEMENT MOTOR MODULE	1.000 EA
85XU0407S04	4X1/4 U DRIVE PIN STAINLESS	2.000 EA
HA6001A01	THERMAL RETAINER (PLATED)	1.000 EA
12XF0632A06	6-32X3/8 TY F HEX HD SLT	2.000 EA
MG1025C02	WILKOFASST SG, 787.105, TAN	0.017 GA
LB1118	LABEL,WARNING (ROLL LABEL)	1.000 EA
LC0006	CONNECTION LABEL	1.000 EA
NP3126L	ALUM FARM DUTY SUPER-E UL CSA-EEV PREM	1.000 EA
36PA1000	PKG GRP, PRINT PK1016A06	1.000 EA
PK3082	STYROFOAM CRADLE	1.000 EA

Parts List (continued)		
Part Number	Description	Quantity
MN416A01	TAG-INSTAL-MAINT no wire (1200/bx) 5/18	1.000 EA

AC Induction Motor Performance Data

Record # 55611 - Typical performance - not guaranteed values

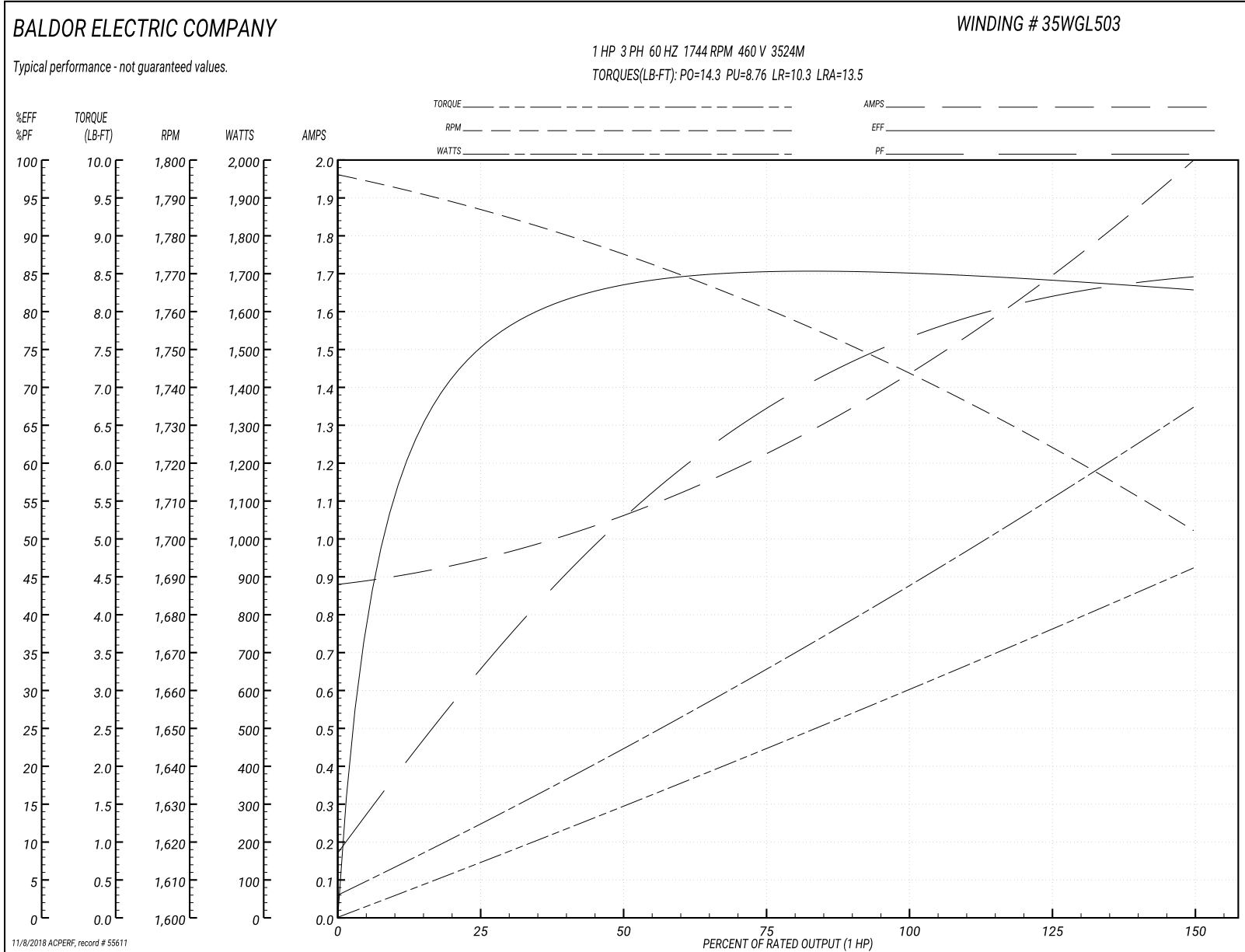
Winding: 35WGL503-R001	Type: 3524M	Enclosure: TENV
-------------------------------	--------------------	------------------------

Nameplate Data				460 V, 60 Hz: Single Voltage Motor	
Rated Output (HP)	1			Full Load Torque	3.02 LB-FT
Volts	460//380			Start Configuration	direct on line
Full Load Amps	1.5//1.7			Breakdown Torque	14.3 LB-FT
R.P.M.	1740//1430			Pull-up Torque	8.76 LB-FT
Hz	60//50	Phase	3	Locked-rotor Torque	10.3 LB-FT
NEMA Design Code	B	KVA Code	M	Starting Current	13.5 A
Service Factor (S.F.)	1			No-load Current	0.89 A
NEMA Nom. Eff.	85.5	Power Factor	76	Line-line Res. @ 25°C	14.8 Ω
Rating - Duty	40C AMB-CONT			Temp. Rise @ Rated Load	85°C
				Locked-rotor Power Factor	61.4
				Rotor inertia	0.142 LB-FT ²

Load Characteristics 460 V, 60 Hz, 1 HP

% of Rated Load	25	50	75	100	125	150
Power Factor	33	53	67	76	81	85
Efficiency	74.5	82.9	85.2	85.2	84.7	82.6
Speed	1784	1774	1760	1744	1731	1698
Line amperes	0.935	1.05	1.22	1.45	1.7	1.99

Performance Graph at 460V, 60Hz, 1.0HP Typical performance - Not guaranteed values



AC Induction Motor Performance Data

Record # 55612 - Typical performance - not guaranteed values

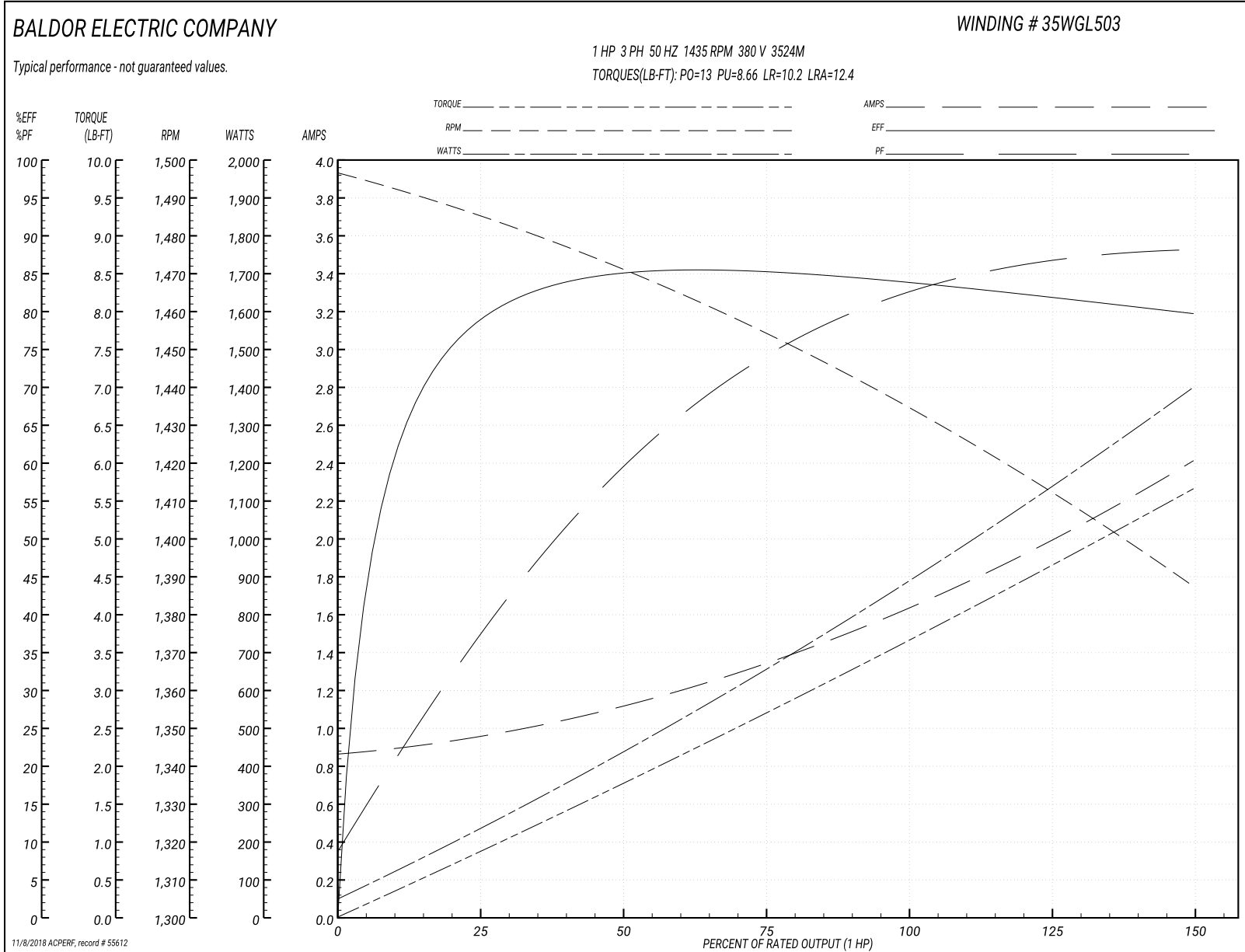
Winding: 35WGL503-R001	Type: 3524M	Enclosure: TENV
-------------------------------	--------------------	------------------------

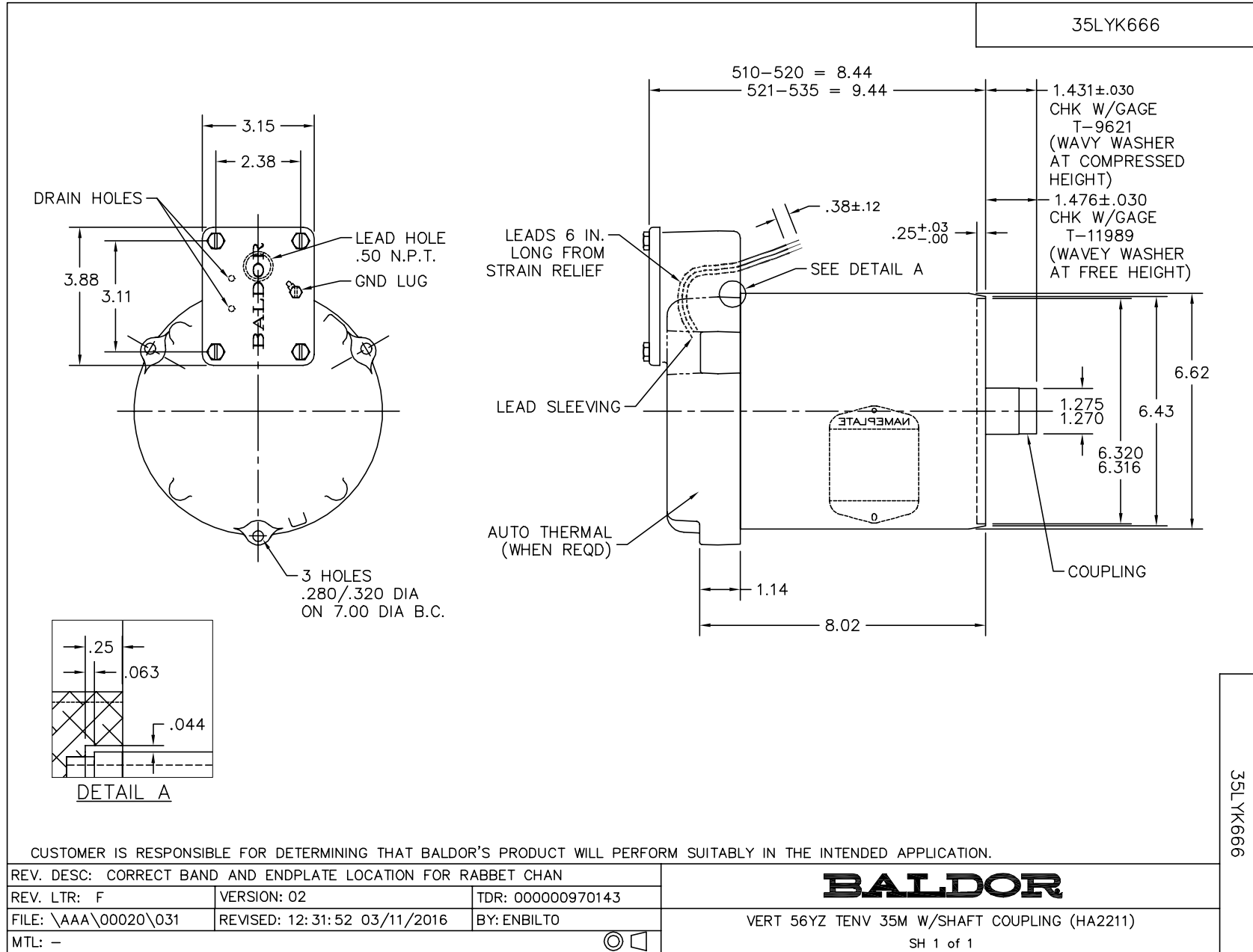
Nameplate Data				380 V, 50 Hz: Single Voltage Motor	
Rated Output (HP)	1			Full Load Torque	3.67 LB-FT
Volts	460//380			Start Configuration	direct on line
Full Load Amps	1.5//1.7			Breakdown Torque	13 LB-FT
R.P.M.	1740//1430			Pull-up Torque	8.66 LB-FT
Hz	60//50	Phase	3	Locked-rotor Torque	10.2 LB-FT
NEMA Design Code	B	KVA Code	M	Starting Current	12.4 A
Service Factor (S.F.)	1			No-load Current	0.879 A
NEMA Nom. Eff.	85.5	Power Factor	76	Line-line Res. @ 25°C	14.8 Ω
Rating - Duty	40C AMB-CONT			Temp. Rise @ Rated Load	107°C
				Locked-rotor Power Factor	67.7
				Rotor inertia	0.142 LB-FT ²

Load Characteristics 380 V, 50 Hz, 1 HP

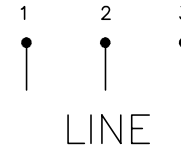
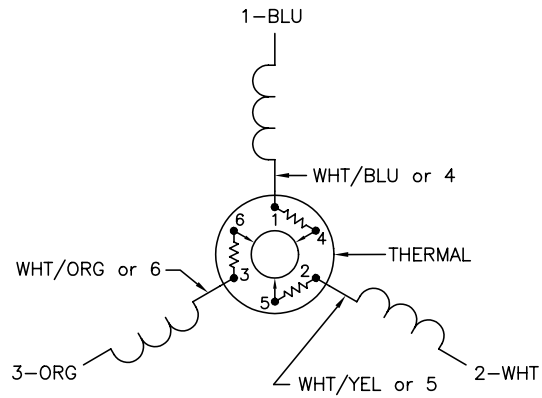
% of Rated Load	25	50	75	100	125	150
Power Factor	38	61	74	82	86	89
Efficiency	77.9	84.2	85.2	84.1	82.5	79.4
Speed	1483	1470	1454	1435	1418	1384
Line amperes	0.94	1.1	1.34	1.65	2	2.4

Performance Graph at 380V, 50Hz, 1.0HP Typical performance - Not guaranteed values

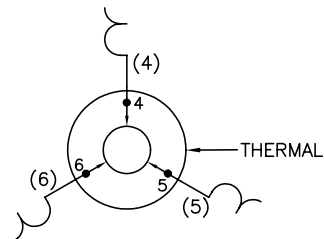




CD0003



INTERNAL CONNECTION FOR THREE TERMINAL THERMAL



NOTES:

1. INTERCHANGE ANY TWO LINE LEADS TO REVERSE ROTATION.
2. ACTUAL NUMBER OF INTERNAL PARALLEL CIRCUITS MAY VARY.
3. LEAD COLORS ARE OPTIONAL. LEADS MUST ALWAYS BE NUMBERED AS SHOWN.

REV. DESC: CORRECT LEAD MARKING			
REV. LTR: F	BY: JLP	REVISED: 04/14/99 8:23	TDR: 0178963
CD0003		FILE: AAA00008369	MDL: -
		MTL: -	

BALDOR ELECTRIC Co.

3PH, SV, THERMAL, 3 LEADS

CD0003