

BALDOR® • RELIANCE 

Product Information Packet

EL11309

1HP,3480RPM,1PH,60HZ,56,3524LC,ODP,F1,N

| Part Detail | | | | | | | |
|-------------|--------|-------------|------------|-------------|---------------------|---------------|------------|
| Revision: | G | Status: | PRD/A | Change #: | | Proprietary: | No |
| Type: | AC | Elec. Spec: | 35WGN672 | CD Diagram: | CD0055 | Mfg Plant: | |
| Mech. Spec: | 35M497 | Layout: | 35LYM497 | Poles: | 02 | Created Date: | 03-18-2014 |
| Base: | RG | Eff. Date: | 05-31-2018 | Leads: | 4#16 A PH,2#18 B PH | | |

| Specs | | | |
|---------------------------------|-------------------------|--------------------------------|--------------------|
| Catalog Number: | EL11309 | Inverter Code: | Not Inverter |
| Enclosure: | OPEN | KVA Code: | H |
| Frame: | 56 | Lifting Lugs: | No Lifting Lugs |
| Frame Material: | Steel | Locked Bearing Indicator: | No Locked Bearing |
| Output @ Frequency: | 1.000 HP @ 60 HZ | Motor Lead Quantity/Wire Size: | 4 @ 16 AWG, A PH |
| Synchronous Speed @ Frequency: | 3600 RPM @ 60 HZ | Motor Lead Exit: | Ko Box |
| Voltage @ Frequency: | 115.0 V @ 60 HZ | Motor Lead Termination: | Flying Leads |
| | 230.0 V @ 60 HZ | Motor Type: | 3524LC |
| XP Class and Group: | None | Mounting Arrangement: | F1 |
| XP Division: | Not Applicable | Power Factor: | 99 |
| Agency Approvals: | UR | Product Family: | General Purpose |
| | CSA | Pulley End Bearing Type: | Ball |
| Auxillary Box: | No Auxillary Box | Pulley Face Code: | Standard |
| Auxillary Box Lead Termination: | None | Pulley Shaft Indicator: | Standard |
| Base Indicator: | Rigid | Rodent Screen: | None |
| Bearing Grease Type: | Polyrex EM (-20F +300F) | RoHS Status: | ROHS COMPLIANT |
| Blower: | None | Shaft Extension Location: | Pulley End |
| Current @ Voltage: | 3.900 A @ 230.0 V | Shaft Ground Indicator: | No Shaft Grounding |

| | | | |
|---------------------------------------|---------------------------|------------------------------------|---------------------|
| | 7.800 A @ 115.0 V | Shaft Rotation: | Reversible |
| Design Code: | N | Shaft Slinger Indicator: | No Slinger |
| Drip Cover: | No Drip Cover | Speed Code: | Single Speed |
| Duty Rating: | CONT | Motor Standards: | NEMA |
| Electrically Isolated Bearing: | Not Electrically Isolated | Starting Method: | Direct on line |
| Feedback Device: | NO FEEDBACK | Thermal Device - Bearing: | None |
| Front Face Code: | Standard | Thermal Device - Winding: | None |
| Front Shaft Indicator: | None | Vibration Sensor Indicator: | No Vibration Sensor |
| Heater Indicator: | No Heater | Winding Thermal 1: | None |
| Insulation Class: | F | Winding Thermal 2: | None |

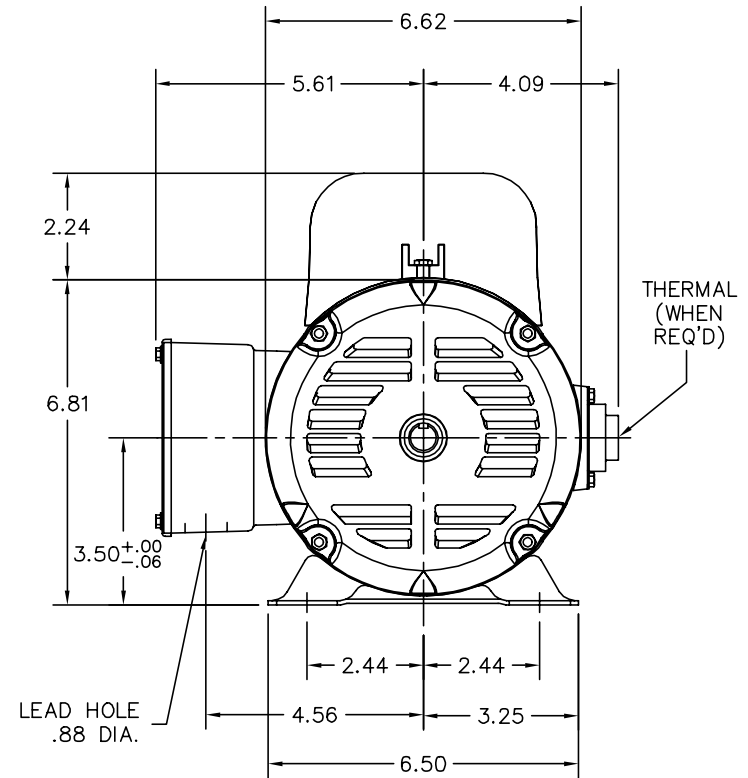
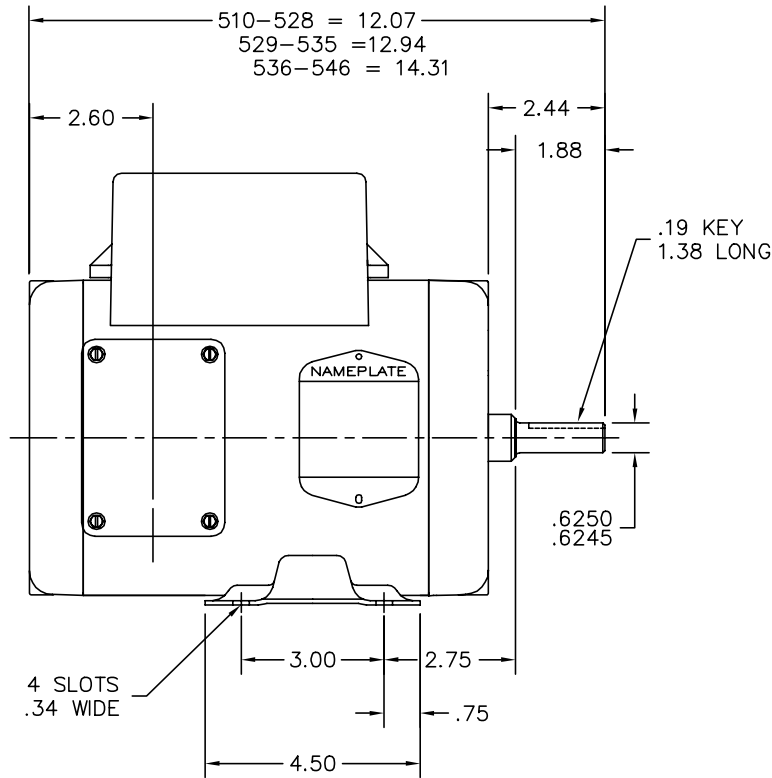
| | | | | | | | | | | | | | |
|--------------------------|--------------|--|--|--|--|-------------|------|--|------------|-----------|---|-----------------------|---|
| Nameplate NP3155L | | | | | | | | | | | | | |
| CAT.NO. | EL11309 | | | | | | | | | | | | |
| SPEC. | 35M497N672G1 | | | | | | | | | | | | |
| HP | 1 | | | | | | | | | | | | |
| VOLTS | 115/230 | | | | | | | | | | | | |
| AMP | 7.8/3.9 | | | | | | | | | | | | |
| RPM | 3480 | | | | | | | | | | | | |
| FRAME | 56 | | | | | HZ | 60 | | | PH | 1 | | |
| SER.F. | 1.25 | | | | | CODE | H | | DES | N | | CL | F |
| F.L. AVG. EFF. | 82 | | | | | PF | 99 | | | | | | |
| RATING | 40C AMB-CONT | | | | | | | | | | | | |
| CC | | | | | | | | | | | | USABLE AT 208V | |
| DE | 6205 | | | | | ODE | 6203 | | | | | | |
| ENCL | ODP | | | | | SN | | | | | | | |
| | SFA 10/5 | | | | | | | | | | | | |

| Parts List | | |
|-------------|--|----------|
| Part Number | Description | Quantity |
| SA278105 | SA 35M497N672G1 | 1.000 EA |
| RA264650 | RA 35M497N672G1 | 1.000 EA |
| OC3060C09SP | CAPACITOR 60 MFD 240 VAC | 1.000 EA |
| EC1645B06 | ELEC CAP 165V 2.0 X 4.3 | 1.000 EA |
| WD3006A01 | RSS-2-103JT 2W 10K RES. METAL OXIDE 5% | 1.000 EA |
| NS2512A01 | INSULATOR, CONDUIT BOX X | 1.000 EA |
| 35CB3007 | 35 CB CASTING W/.88 DIA. LEAD HOLE | 1.000 EA |
| 51XB1016A07 | 10-16 X 7/16 HXWSSLD SERTYB | 2.000 EA |
| 11XW1032G06 | 10-32 X .38, TAPTITE II, HEX WSHR SLTD U | 1.000 EA |
| 51XW0832A07 | 8-32 X .44, TAPTITE II, HEX WSHR SLTD SE | 2.000 EA |
| 35EP3209G00 | MASTER ODE,203 BRG | 1.000 EA |
| NS2501A02 | INSULATOR, CAPACITOR BOX | 1.000 EA |
| 35CB3801 | CAPACITOR COVER, CAST | 1.000 EA |
| HA7010 | CAPACITOR RETENTION CLAMP | 1.000 EA |
| 51XB1016A08 | 10-16X 1/2HXWSSLD SERTYB | 2.000 EA |
| HW5100A03 | WAVY WASHER (W1543-017) | 1.000 EA |
| 35EP3210B00 | MASTER DE,205 BRG,1.000SH | 1.000 EA |
| XY1032A02 | 10-32 HEX NUT DIRECTIONAL SERRATION | 4.000 EA |
| 35CB4521 | 35 LIPPED CB LID (GALV & PHOSPH) | 1.000 EA |
| 51XW0832A07 | 8-32 X .44, TAPTITE II, HEX WSHR SLTD SE | 4.000 EA |
| HW2501D13 | KEY, 3/16 SQ X 1.375 | 1.000 EA |
| HA7000A04 | KEY RETAINER 0.625 DIA SHAFTS | 1.000 EA |
| 85XU0407S04 | 4X1/4 U DRIVE PIN STAINLESS | 2.000 EA |
| MJ1000A02 | GREASE, POLYREX EM EXXON (USe 4824-15A) | 0.050 LB |

| Parts List (continued) | | |
|-------------------------------|--|-----------------|
| Part Number | Description | Quantity |
| HA3100A18 | THRUBOLT 10-32 X 9.250 | 4.000 EA |
| SP5181A01 | MODEL 35 LC TORQ STAT SWITCH LEAD ASSY | 1.000 EA |
| MG1000Y03 | MUNSELL 2.53Y 6.70/ 4.60, GLOSS 20, | 0.017 GA |
| WD1000A15 | 3-520132-2 AMP FLAG (4M/RL NON-CANC/NON- | 4.000 EA |
| LC0001A01 | CONN LABEL / WARNING LABEL (LC0001 / LB1 | 1.000 EA |
| NP3155L | ALUM SUPER-E UL CSA CC "SEMS" | 1.000 EA |
| 36PA1000 | PKG GRP, PRINT PK1016A06 | 1.000 EA |
| FE-0000001 | ZRTG FE ASSEMBLY | 1.000 EA |
| PE-0000001 | ZRTG PE ASSEMBLY | 1.000 EA |
| MN416A01 | TAG-INSTAL-MAINT no wire (1200/bx) 5/18 | 1.000 EA |

No performance data has been
assigned to this product.

35LYM497



CUSTOMER IS RESPONSIBLE FOR DETERMINING THAT BALDOR'S PRODUCT WILL PERFORM SUITABLY IN THE INTENDED APPLICATION.

| | | |
|------------------------------|------------------------------|-------------------|
| REV. DESC: REPLACE ENDPLATES | | |
| REV. LTR: B | VERSION: 02 | TDR: 000001041474 |
| FILE: \AAA\00012\438 | REVISED: 03:40:08 08/29/2017 | BY: USJOBUR22 |
| MTL: - | © □ | |

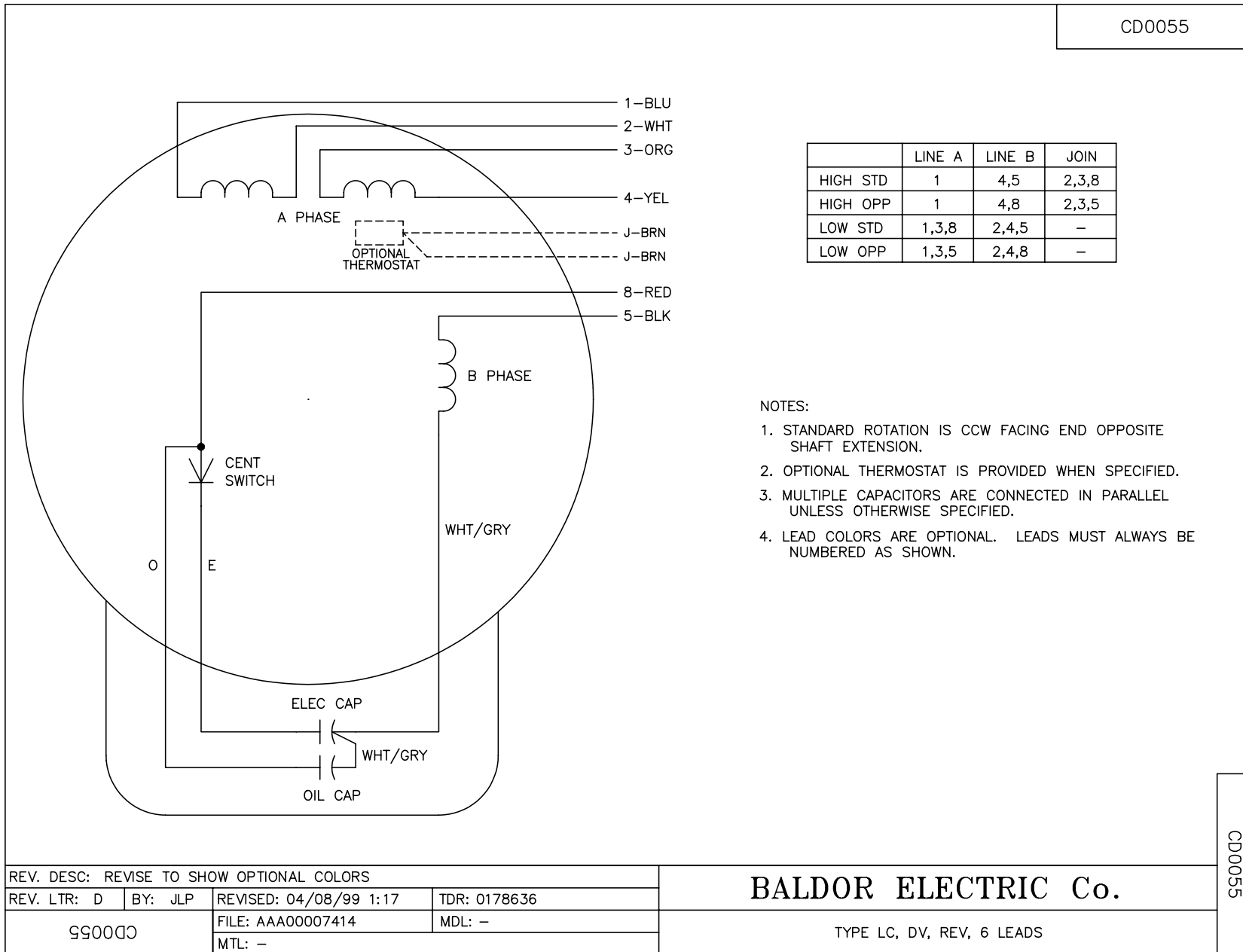
BALDOR

STD HORZ 56 OPEN 35LC

SH 1 of 1

35LYM497

CD0055



NOTES:

1. STANDARD ROTATION IS CCW FACING END OPPOSITE SHAFT EXTENSION.
2. OPTIONAL THERMOSTAT IS PROVIDED WHEN SPECIFIED.
3. MULTIPLE CAPACITORS ARE CONNECTED IN PARALLEL UNLESS OTHERWISE SPECIFIED.
4. LEAD COLORS ARE OPTIONAL. LEADS MUST ALWAYS BE NUMBERED AS SHOWN.

| | | | |
|---|---------|------------------------|--------------|
| REV. DESC: REVISE TO SHOW OPTIONAL COLORS | | | |
| REV. LTR: D | BY: JLP | REVISED: 04/08/99 1:17 | TDR: 0178636 |
| 99000 | | FILE: AAA00007414 | MDL: - |
| | | MTL: - | |

BALDOR ELECTRIC Co.

TYPE LC, DV, REV, 6 LEADS

CD0055