

BALDOR • RELIANCE

Customer information packet

EL3612T

5HP, 1735RPM, 1PH, 60HZ, 184T, 3646LC, TEFC, F1

Class - None

Division - Not Applicable

Specifications

Enclosure	TEFC
Frame	184T
Frame Material	Steel
Frequency	60.00 Hz
Haz Area Class and Group	None
Haz Area Division	Not Applicable
Motor Letter Type	Cap Start, Cap Run
Output @ Frequency	5.000 HP @ 60 HZ
Phase	1
Synchronous Speed @ Frequency	1800 RPM @ 60 HZ
Voltage @ Frequency	230.0 V @ 60 HZ
Agency Approvals	CSA CSA EEV NEMA_PREMIUM UR
Ambient Temperature	40 °C
Auxillary Box	No Auxillary Box
Auxillary Box Lead Termination	None
Base Indicator	Rigid
Bearing Grease Type	Polyrex EM (-20F +300F)
Blower	None
Current @ Voltage	19.100 A @ 230.0 V
Design Code	L
Drip Cover	No Drip Cover
Duty Rating	CONT
Efficiency @ 100% Load	86.5 %
Electrically Isolated Bearing	Not Electrically Isolated
Feedback Device	NO FEEDBACK
Front Face Code	Standard
Front Shaft Indicator	None
Heater Indicator	No Heater
High Voltage Full Load Amps	19.1 a

Part detail

Revision	AY
Type	AC
Mech. spec.	36E004
Base	
Status	PRD/A
Elec. spec.	36WGY530
Layout	36LYE004
Eff. date	01-13-2025
CD Diagram	CD0017A02
Poles	04
Leads	2#10 A PH,2#16 B PH
Proprietary	False
Created date	01-01-0001

Insulation Class	F
Inverter Code	Not Inverter
KVA Code	G
Lifting Lugs	No Lifting Lugs
Locked Bearing Indicator	No Locked Bearing
Motor Lead Exit	Ko Box
Motor Lead Quantity/Wire Size	2 @ 10 AWG, A PH
Motor Lead Termination	Flying Leads
Motor Standards	NEMA
Motor Type	3646LC
Mounting Arrangement	F1
Number of Poles	4
Overall Length	18.06 IN
Power Factor	97
Product Family	General Purpose
Pulley End Bearing Type	Ball
Pulley Face Code	Standard
Pulley Shaft Indicator	Standard
Rodent Screen	None
Service Factor	1.00
Shaft Diameter	1.125 IN
Shaft Extension Location	Pulley End
Shaft Ground Indicator	No Shaft Grounding
Shaft Rotation	Reversible
Shaft Slinger Indicator	No Slinger
Speed	1735 rpm
Speed Code	Single Speed
Starting Method	Direct on line
Thermal Device - Bearing	None
Thermal Device - Winding	None
Vibration Sensor Indicator	No Vibration Sensor
Winding Thermal 1	None
Winding Thermal 2	None

Nameplate

NP2116L									
CAT.NO.	EL3612T								
SPEC.	36E004Y530E7								
HP	5								
VOLTS	230								
AMP	19.1								
RPM	1735								
FRAME	184T			HZ	60		PH	1	
SER.F.	1.00	CODE	G	DES	L	CL	F		
NEMA-NOM-EFF	86.5	PF	97						
RATING	40C AMB-CONT								
CC									
DE	6206	ODE	6205						
ENCL	TEFC	SN							

Accessories

Part number	Description	Multiplier
36-3301	C FACE KIT	A8
36EP1304A62SP	FLANGE MTD ENDPLATE 182-4TD -ENCL (LESS	A8

AC Induction Motor Performance Data

Record # 11393

Typical performance - not guaranteed values

Winding: 36WGY530-R001		Type: 3646LC	Enclosure: TEFC	
Nameplate Data			230 V, 60 Hz: Single Voltage Motor	
Rated Output (HP)	5	Full Load Torque	15 LB-FT	
Volts	230	Start Configuration	direct on line	
Full Load Amps	19.1	Breakdown Torque	34.8 LB-FT	
R.P.M.	1735	Pull-up Torque	31.9 LB-FT	
Hz	60 Phase	Locked-rotor Torque	41.1 LB-FT	
NEMA Design Code	L KVA Code	Starting Current	127 A	
Service Factor (S.F.)	1	No-load Current	3.08 A	
NEMA Nom. Eff.	86.5 Power Factor	Line-line Res. @ 25°C	0.42 Ω A Ph 0.91 Ω B Ph	
Rating - Duty	40C AMB-CONT	Temp. Rise @ Rated Load	86°C	

Load Characteristics 230 V, 60 Hz, 5 HP

% of Rated Load	25	50	75	100	125	150
Power Factor	92	96	97	97	97	96
Efficiency	70.6	83.6	86.8	86.6	84.4	80.4
Speed	1784	1771	1755	1737	1716	1687
Line amperes	6.05	9.95	14.3	19.1	24.5	31.1

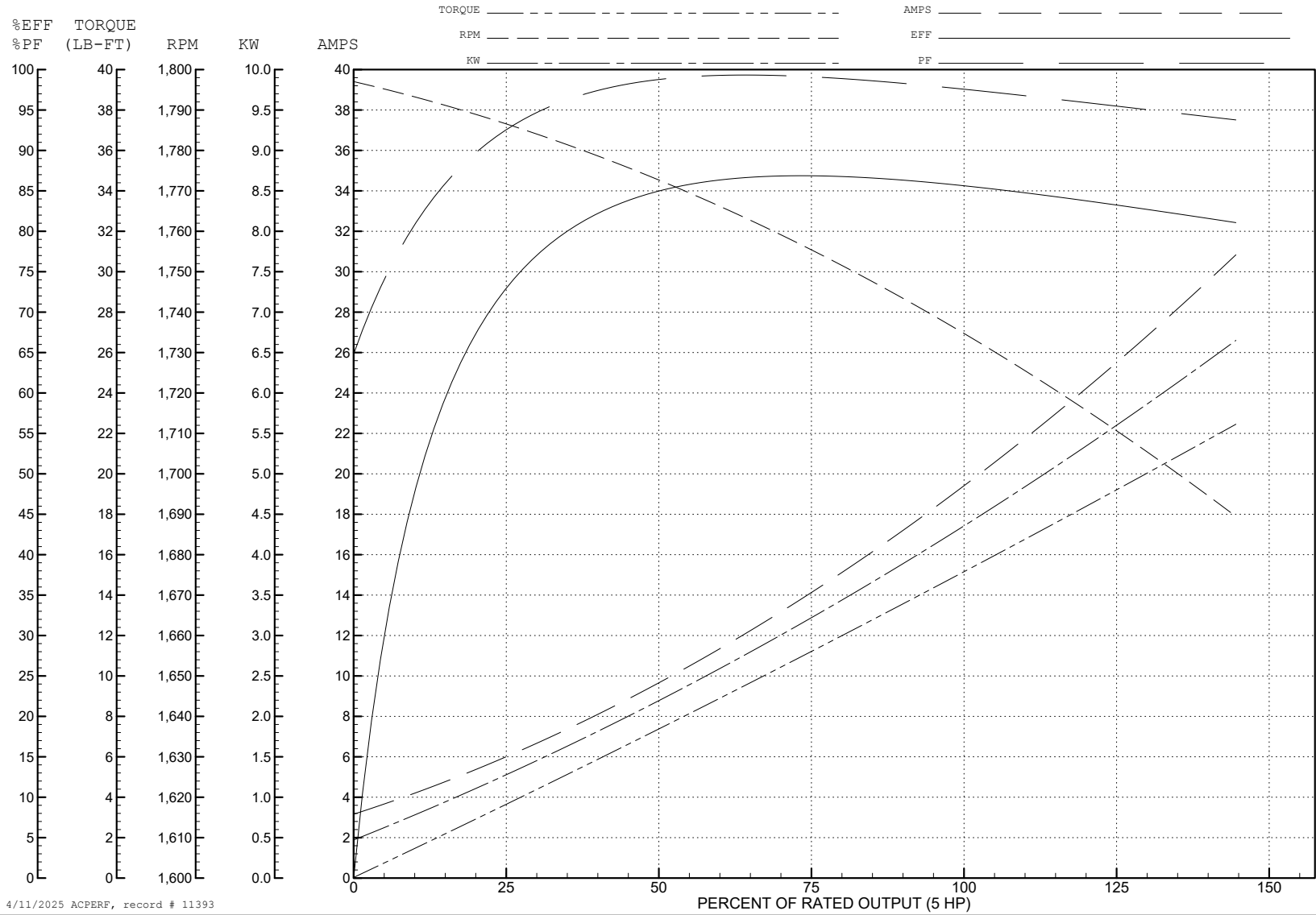
ABB Motors and Mechanical Inc.

WINDING # 36WGY530

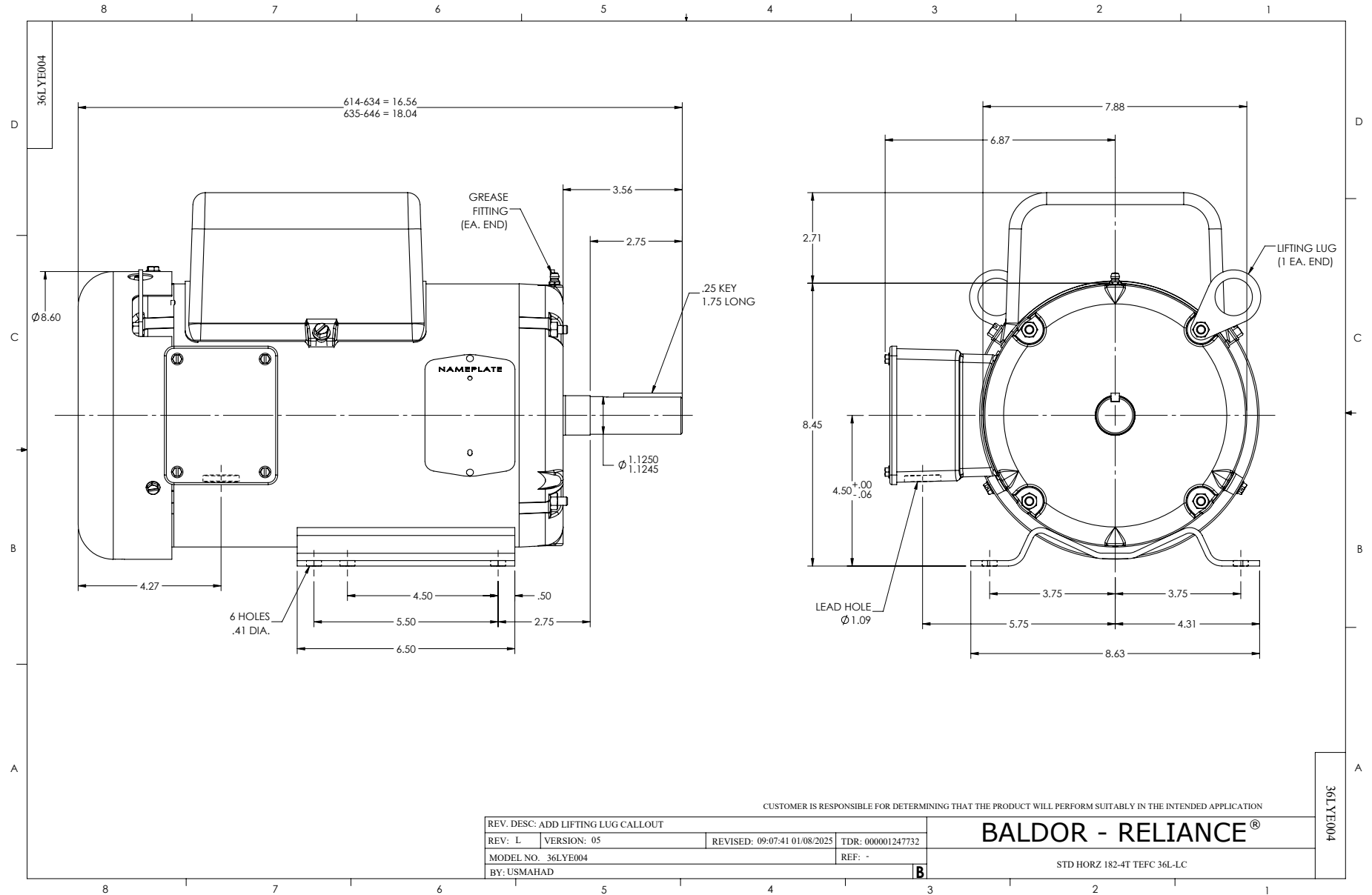
Typical performance - not guaranteed values.

5 HP 1 PH 60 HZ 1735 RPM 230 V 3646LC

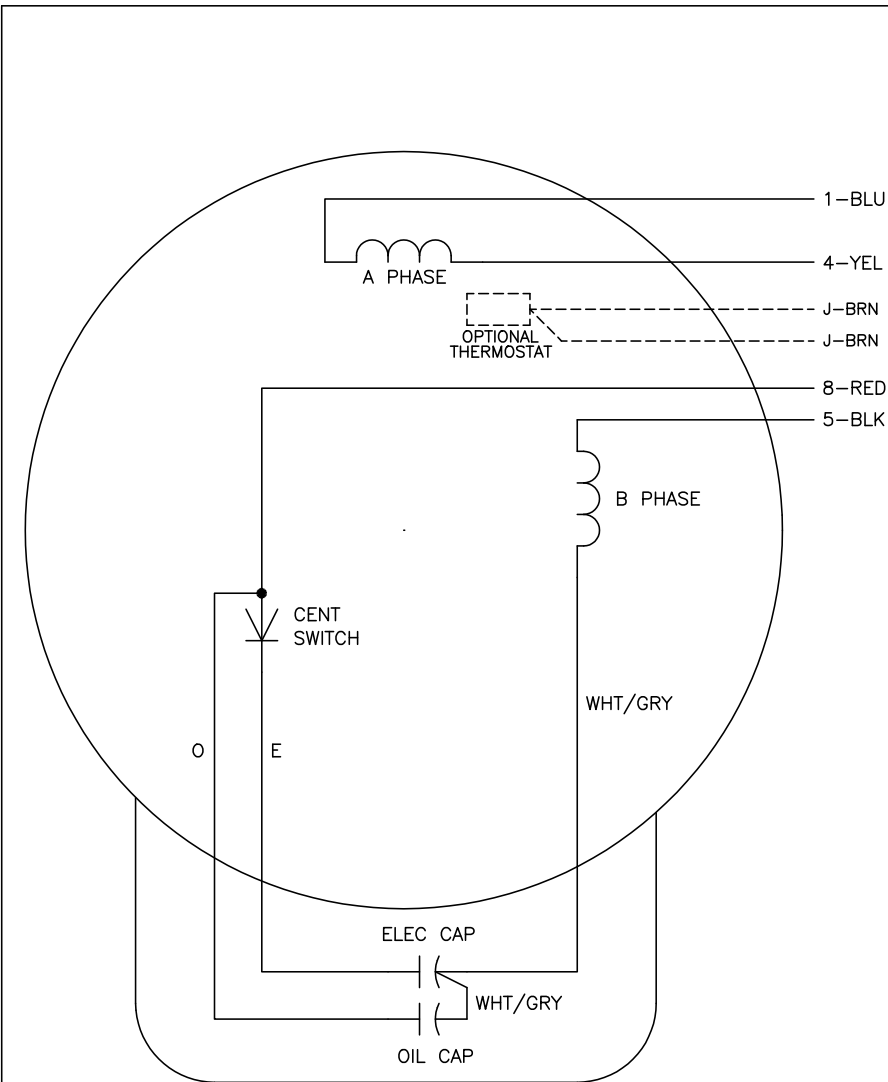
TORQUES (LB-FT): PO=34.8 PU=31.9 LR=41.1 LRA=127



4/11/2025 ACPERF, record # 11393



CD0017A02



	LINE A	LINE B
STD	1,8	4,5
OPP	1,5	4,8

NOTES:

1. STANDARD ROTATION IS CCW FACING END OPPOSITE SHAFT EXTENSION.
2. OPTIONAL THERMOSTAT IS PROVIDED WHEN SPECIFIED.
3. MULTIPLE CAPACITORS ARE CONNECTED IN PARALLEL UNLESS OTHERWISE SPECIFIED.
4. LEAD COLORS ARE OPTIONAL. LEADS MUST ALWAYS BE NUMBERED AS SHOWN.

CD0017A02

REV. DESC: REVISE TO SHOW OPTIONAL COLORS			
REV. LTR: B	BY: JLP	REVISED: 04/09/99 11:30	TDR: 0178636
CD0017A02		FILE: AAA00007514	MDL: -
		MTL: -	

BALDOR ELECTRIC Co.

TYPE LC, SV, REV, 4 LEADS