

BALDOR® • RELIANCE™

Customer information packet

EM2280T

52M 8P TEFC HOR 254T

Class - None

Division - Not Applicable

Specifications

Enclosure	TEFC
Frame	254T
Frame Material	Iron
Frequency	60.00 Hz
Haz Area Class and Group	None
Haz Area Division	Not Applicable
Motor Letter Type	Three Phase
Output @ Frequency	5.000 HP @ 60 HZ
Phase	3
Synchronous Speed @ Frequency	900 RPM @ 60 HZ
Voltage @ Frequency	230.0 V @ 60 HZ 460.0 V @ 60 HZ
Agency Approvals	CSA EEV NEMA PREMIUM NEMA_PREMIUM UR
Ambient Temperature	40 °C
Auxillary Box	No Auxillary Box
Auxillary Box Lead Termination	None
Base Indicator	Rigid
Bearing Grease Type	Polyrex EM (-20F +300F)
Blower	None
Current @ Voltage	8.600 A @ 460.0 V 17.800 A @ 208.0 V 17.200 A @ 230.0 V
Design Code	A
Drip Cover	No Drip Cover
Duty Rating	CONT
Efficiency @ 100% Load	86.5 %
Electrically Isolated Bearing	Not Electrically Isolated
Feedback Device	NO FEEDBACK
Front Shaft Indicator	None

Part detail

Revision	G
Type	AC
Mech. spec.	09P11
Base	
Status	PRD/A
Elec. spec.	09WGT414
Layout	09LYP011
Eff. date	03-19-2024
CD Diagram	CD0005
Poles	08
Leads	9#12
Proprietary	False
Created date	12-16-2021

Heater Indicator	No Heater
High Voltage Full Load Amps	8.6 a
Insulation Class	F
Inverter Code	Inverter Ready
KVA Code	K
Lifting Lugs	Standard Lifting Lugs
Locked Bearing Indicator	Locked Bearing
Motor Lead Quantity/Wire Size	9 @ 12 AWG
Motor Lead Termination	Flying Leads
Motor Standards	NEMA
Motor Type	0952M
Mounting Arrangement	F1
Number of Poles	8
Overall Length	23.36 IN
Power Factor	61
Product Family	General Purpose
Pulley End Bearing Type	Ball
Pulley Face Code	Standard
Pulley Shaft Indicator	Standard
Rodent Screen	None
RoHS Status	ROHS NON-COMPLIANT
Service Factor	1.15
Shaft Diameter	1.625 IN
Shaft Ground Indicator	No Shaft Grounding
Shaft Rotation	Reversible
Shaft Slinger Indicator	Shaft Slinger
Speed	880 rpm
Speed Code	Single Speed
Starting Method	Direct on line
Thermal Device - Bearing	None
Thermal Device - Winding	None
Vibration Sensor Indicator	No Vibration Sensor
Winding Thermal 1	None
Winding Thermal 2	None

Nameplate

NP3441LUA

CAT.NO.	EM2280T						
SPEC	09P011T414						
HP	5						
VOLTS	230/460						
AMPS	17.2/8.6						
RPM	880						
FRAME	254T		HZ	60		PH	3
SF	1.15	CODE	K	DES	A	CLASS	F
NEMA NOM. EFF	86.5	PF	61				
RATING	40C AMB-CONT						
CC	010A						
ENCL	TEFC	SER					
DE	6309	ODE	6208				
VPWM INVERTER READY	SFA 19/9.5						
CT6-60H(10:1)VT3-60H(20:1	50HZ 5HP 190/380V 19.6/9.8A						SF1.0

AC Induction Motor Performance Data

Record # 62448

Typical performance - not guaranteed values

Winding: 09WGT414-R001		Type: 0952M	Enclosure: TEFC	
Nameplate Data			460 V, 60 Hz: High Voltage Connection	
Rated Output (HP)	5	Full Load Torque	29.55 LB-FT	
Volts	230/460	Start Configuration	direct on line	
Full Load Amps	17.2/8.6	Breakdown Torque	82 LB-FT	
R.P.M.	880	Pull-up Torque	46.8 LB-FT	
Hz	60 Phase	Locked-rotor Torque	72.2 LB-FT	
NEMA Design Code	A KVA Code	Starting Current	53.5 A	
Service Factor (S.F.)	1.15	No-load Current	5.53 A	
NEMA Nom. Eff.	86.5 Power Factor	Line-line Res. @ 25°C	1.6349 Ω	
Rating - Duty	40C AMB-CONT	Temp. Rise @ Rated Load	42°C	
S.F. Amps	19/9.5	Temp. Rise @ S.F. Load	50°C	
		Locked-rotor Power Factor	27.3	
		Rotor inertia	4.19 lb-ft ²	

Load Characteristics 460 V, 60 Hz, 5 HP

% of Rated Load	25	50	75	100	125	150	S.F.
Power Factor	26	42	54	61	66	70	64
Efficiency	78.6	86	87.9	88.2	87.6	86.6	87.8
Speed	896.5	893.4	889.8	886	882.1	877.6	884
Line amperes	5.8	6.45	7.42	8.62	10	11.7	9.45

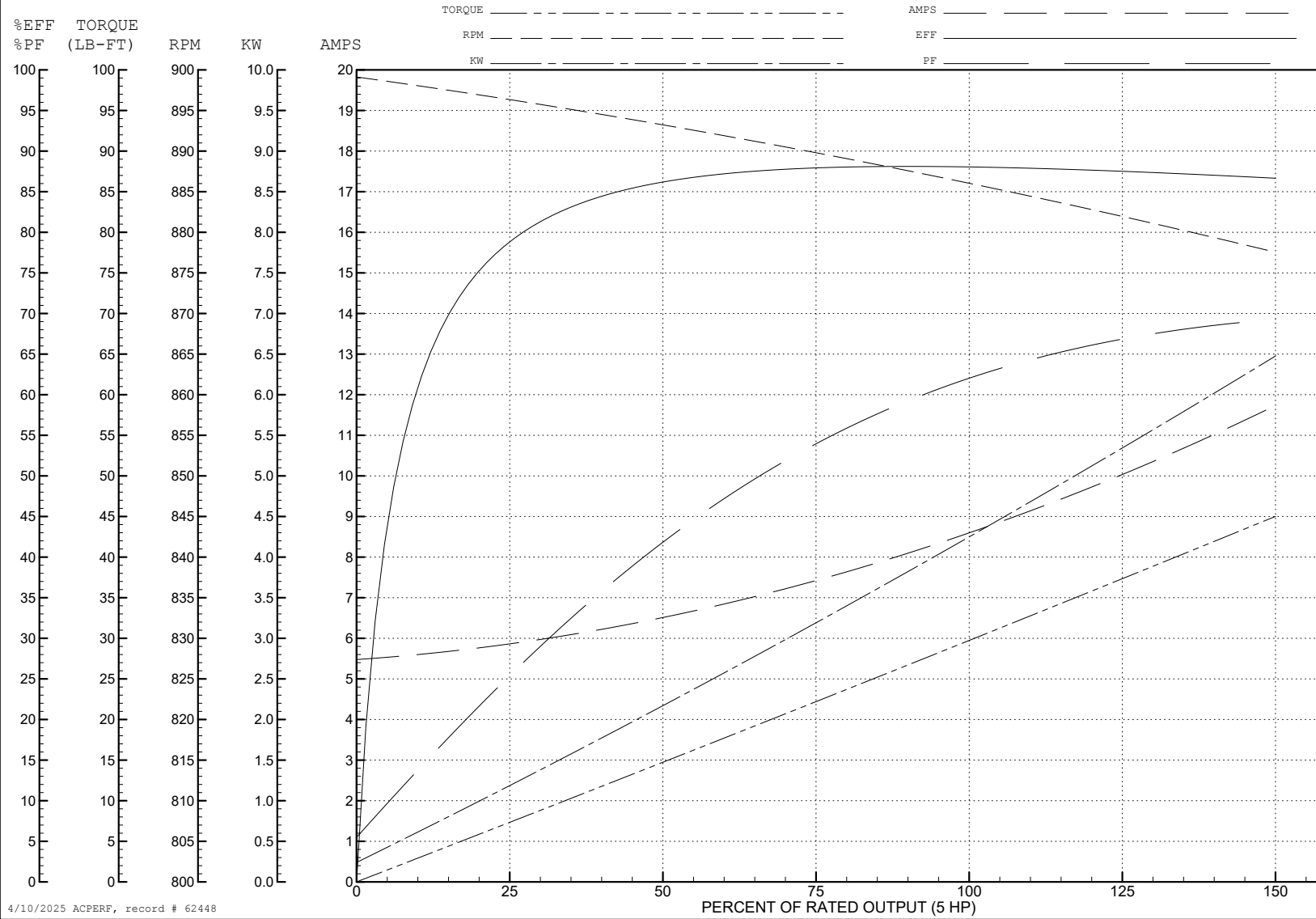
ABB Motors and Mechanical Inc.

WINDING # 09WGT414

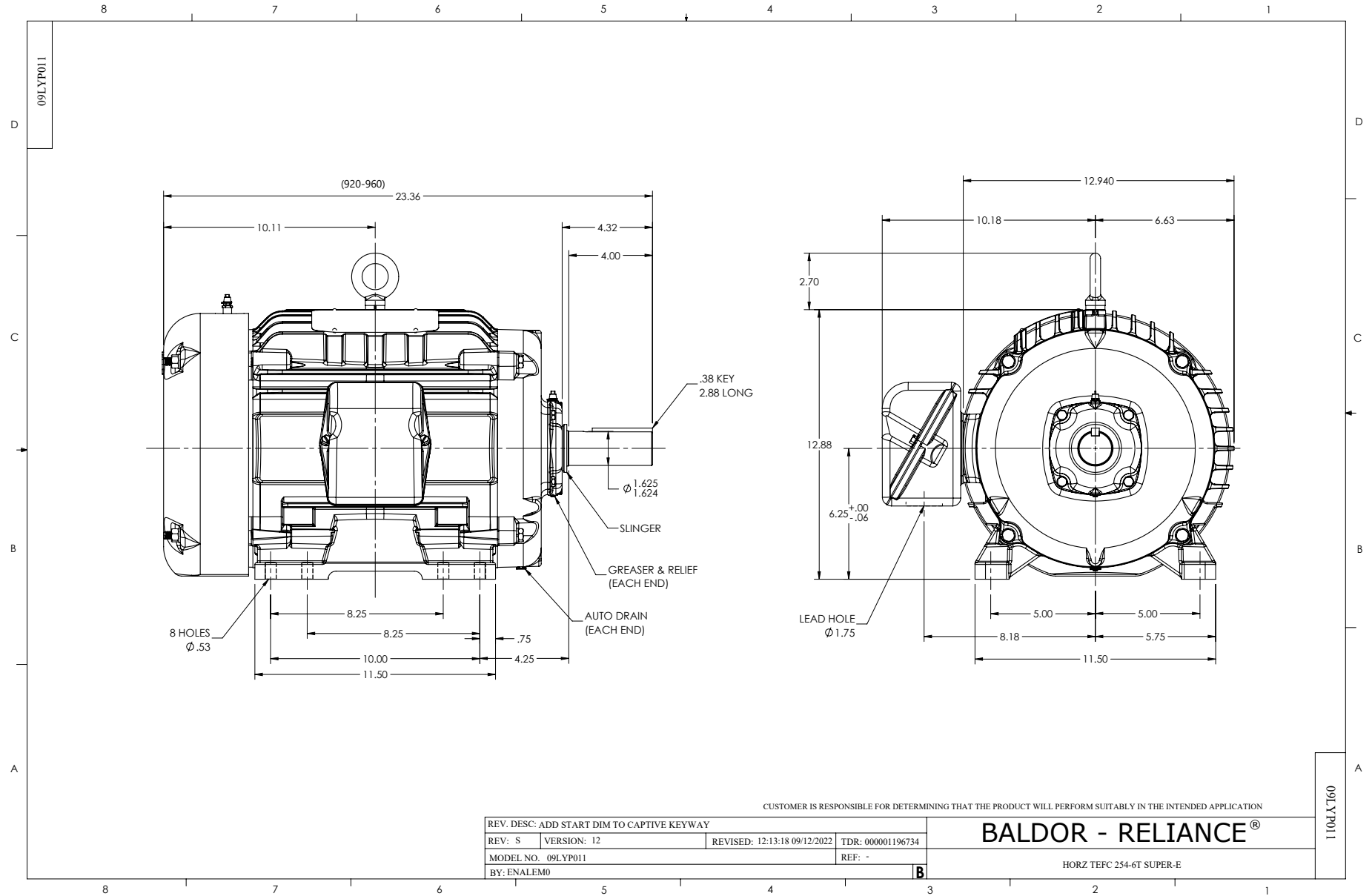
Typical performance - not guaranteed values.

5 HP 3 PH 60 HZ 880 RPM 460 V 0952M

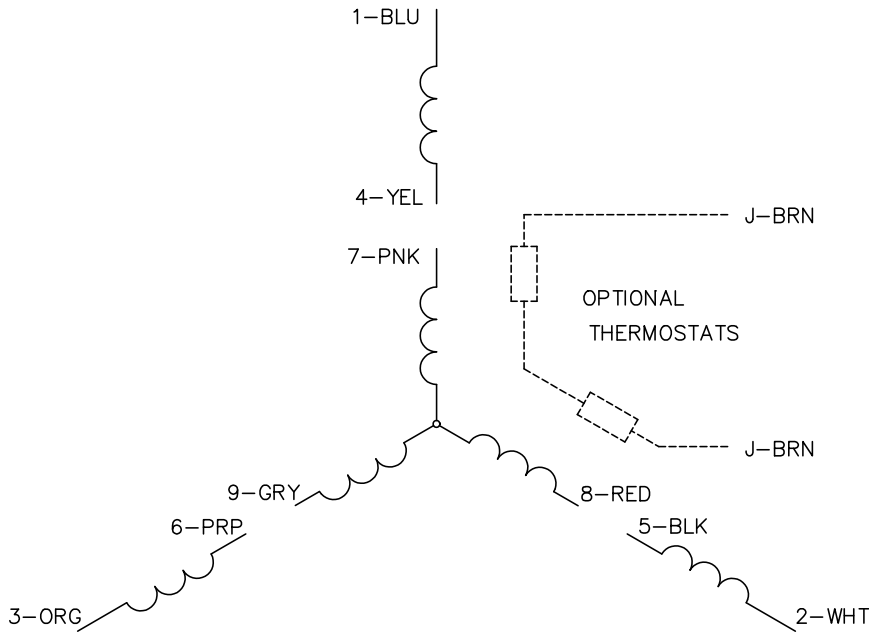
TORQUES (LB-FT): PO=82 PU=46.8 LR=72.2 LRA=53.5



4/10/2025 ACPERF, record # 62448



CD0005



LOW VOLTAGE
(2Y)



LINE

HIGH VOLTAGE
(1Y)



LINE

NOTES:

1. INTERCHANGE ANY TWO LINE LEADS TO REVERSE ROTATION.
2. OPTIONAL THERMOSTATS ARE PROVIDED WHEN SPECIFIED.
3. ACTUAL NUMBER OF INTERNAL PARALLEL CIRCUITS MAY BE A MULTIPLE OF THOSE SHOWN ABOVE.
4. LEAD COLORS ARE OPTIONAL. LEADS MUST ALWAYS BE NUMBERED AS SHOWN.

CD0005

REV. DESC: REVISE TO SHOW OPTIONAL COLORS			
REV. LTR: E	BY: JLP	REVISED: 01/19/99 10:15	TDR: 0171435
S00000		FILE: AAA00005140	MDL: -
		MTL: -	

BALDOR ELECTRIC Co.

3PH, DV, 9 LEADS