

BALDOR® • RELIANCE 

Product Information Packet

EM2535T-12

30HP, 1775RPM, 3PH, 60HZ, 286T, 4060M, OPSB, F1

| Part Detail | | | | | | | |
|-------------|--------|-------------|------------|-------------|--------|---------------|------------|
| Revision: | D | Status: | PRD/A | Change #: | | Proprietary: | No |
| Type: | AC | Elec. Spec: | 40WGX349 | CD Diagram: | CD0104 | Mfg Plant: | |
| Mech. Spec: | 40D101 | Layout: | 40LYD101 | Poles: | 04 | Created Date: | 05-26-2016 |
| Base: | RG | Eff. Date: | 09-07-2017 | Leads: | 12#10 | | |

| Specs | | | |
|---------------------------------|-------------------------|--------------------------------|-----------------------|
| Catalog Number: | EM2535T-12 | Insulation Class: | F |
| Enclosure: | OPSB | Inverter Code: | Inverter Ready |
| Frame: | 286T | KVA Code: | H |
| Frame Material: | Steel | Lifting Lugs: | Standard Lifting Lugs |
| Output @ Frequency: | 30.000 HP @ 60 HZ | Locked Bearing Indicator: | No Locked Bearing |
| Synchronous Speed @ Frequency: | 1800 RPM @ 60 HZ | Motor Lead Quantity/Wire Size: | 12 @ 10 AWG |
| Voltage @ Frequency: | 460.0 V @ 60 HZ | Motor Lead Exit: | Ko Box |
| | 230.0 V @ 60 HZ | Motor Lead Termination: | Flying Leads |
| Agency Approvals: | CSA | Motor Type: | 4060M |
| | CSA EEV | Mounting Arrangement: | F1 |
| | UR | Power Factor: | 82 |
| Auxillary Box: | No Auxillary Box | Product Family: | General Purpose |
| Auxillary Box Lead Termination: | None | Pulley End Bearing Type: | Ball |
| Base Indicator: | Rigid | Pulley Face Code: | Standard |
| Bearing Grease Type: | Polyrex EM (-20F +300F) | Pulley Shaft Indicator: | Standard |
| Blower: | None | Rodent Screen: | None |
| Current @ Voltage: | 76.000 A @ 208.0 V | Shaft Extension Location: | Pulley End |
| | 72.000 A @ 230.0 V | Shaft Ground Indicator: | No Shaft Grounding |

| | | | |
|---------------------------------------|---------------------------|------------------------------------|-----------------------|
| | 36.000 A @ 460.0 V | Shaft Rotation: | Reversible |
| Design Code: | A | Shaft Slinger Indicator: | No Slinger |
| Drip Cover: | No Drip Cover | Speed Code: | Single Speed |
| Duty Rating: | CONT | Motor Standards: | NEMA |
| Electrically Isolated Bearing: | Not Electrically Isolated | Starting Method: | Wye Start - Delta Run |
| Feedback Device: | NO FEEDBACK | Thermal Device - Bearing: | NONE (OLD) |
| Front Face Code: | Standard | Thermal Device - Winding: | None |
| Front Shaft Indicator: | None | Vibration Sensor Indicator: | No Vibration Sensor |
| Heater Indicator: | No Heater | Winding Thermal 1: | None |
| | | Winding Thermal 2: | None |

| Nameplate NP3554LUA | | | | | | | | | | | |
|---------------------|---------------------------|--|----------|----------------|--------|-------------------------|---------|------------|---------|--------|------|
| CAT.NO. | EM2535T-12 | | | P/N | | | | ENCL | OPSB | | |
| SPEC. | 40D101X349G1 | | CC | 010A | | FRAME | 286T | | SER.NO. | | |
| HP | 30 | | CLASS | F | | HZ | 60 | | | | |
| RPM | 1775 | | PH | 3 | | DES | A | | | | |
| VOLTS | 230/460 | | | CODE | H | | ODE BRG | 6309 | | DE BRG | 6311 |
| AMPS | 72/36 | | | USABLE AT 208V | 76 | | | | | | |
| RATING | 40C AMB-CONT | | | NEMA-NOM-EFF | 94.1 | | GREASE | POLYREX EM | | | |
| PF | 82 | | SER.F. | 1.15 | | VPWM INVERTER READY | | | | | |
| USABLE AT | 50Hz 30Hp 190/380V 86/43A | | | | SF 1.0 | | | | | | |
| HTR-VOLTS | | | HTR-AMPS | | | MAX. SPACE HEATER TEMP. | | | | | |

| Parts List | | |
|----------------|------------------------------------------|----------|
| Part Number | Description | Quantity |
| SA321221 | SA 40D101X349G1 | 1.000 EA |
| RA308973 | RA 40D101X349G1 | 1.000 EA |
| S/P107-000-004 | SUPER-E(284 FR. & UP)-CL PLANT,POLYREX E | 1.000 EA |
| HA6361A01 | LIFTING LUG FOR 37, 39 & 40 FRAME ZINC | 2.000 EA |
| HA6017 | CAST ADAPTER, 40,42 KOBX | 1.000 EA |
| 19XW3118A12 | .31-18 X .75 HEX WASHER HEAD TAPTITE II | 2.000 EA |
| HW1001A31 | LOCKWASHER 5/16, ZINC PLT.591 OD, .319 I | 2.000 EA |
| WD1000B25 | GND LUG, BURNDY L125HP OR T&B L125HP-BB | 1.000 EA |
| 19XW3118G08 | .31-18X.50,HEX WSHR HD,TAPTITE 2,GREEN | 1.000 EA |
| 10CB3000SP | STD KO BOX MODEL 310,312,314 MTRS W/2.00 | 1.000 EA |
| 19XW3118A12 | .31-18 X .75 HEX WASHER HEAD TAPTITE II | 4.000 EA |
| HW1001A31 | LOCKWASHER 5/16, ZINC PLT.591 OD, .319 I | 4.000 EA |
| 40EP3200A02 | STD FREP OPEN 309 BRG | 1.000 EA |
| HW5100A11 | W3917-042 WVY WSHR (WB) | 1.000 EA |
| 40EP3200B05 | STD PUEP OPEN 311 BRG | 1.000 EA |
| XY3816A12 | 3/8-16 FINISHED NUT | 8.000 EA |
| 10CB3500SP | CONDUIT BOX LID, CAST | 1.000 EA |
| 51XW2520A12 | .25-20 X .75, TAPTITE II, HEX WSHR SLTD | 4.000 EA |
| HW2501H28 | KEY, 1/2 SQ X 3.250 | 1.000 EA |
| LB1115N | LABEL,LIFTING DEVICE (ON ROLLS) | 1.000 EA |
| HW4500A03 | GREASE FITTING, .125 NPT 1610(ALEMITE) 8 | 1.000 EA |
| HW4500A20 | 1/8NPT SL PIPE PLUG | 1.000 EA |
| HA4051A00 | PLASTIC CAP FOR GREASE FITTING | 1.000 EA |
| MJ1000A02 | GREASE, POLYREX EM EXXON (USe 4824-15A) | 0.050 LB |

| Parts List (continued) | | |
|-------------------------------|------------------------------------------|-----------------|
| Part Number | Description | Quantity |
| HW4500A03 | GREASE FITTING, .125 NPT 1610(ALEMITE) 8 | 1.000 EA |
| HW4500A20 | 1/8NPT SL PIPE PLUG | 1.000 EA |
| HA4051A00 | PLASTIC CAP FOR GREASE FITTING | 1.000 EA |
| MG1000Y03 | MUNSELL 2.53Y 6.70/ 4.60, GLOSS 20, | 0.070 GA |
| 85XU0407S04 | 4X1/4 U DRIVE PIN STAINLESS | 4.000 EA |
| 40AD2002A01 | LEXAN BAFFLE 40 FR OPEN | 1.000 EA |
| 40AD2002A01 | LEXAN BAFFLE 40 FR OPEN | 1.000 EA |
| HA3154A06 | THRUBOLT STUD 3/8-16 X 19.500 | 4.000 EA |
| LB1119N | WARNING LABEL | 1.000 EA |
| LC0104A01 | CONNECTION DIAGRAM | 1.000 EA |
| NP3554LUA | SS SUPER-E VPWM INV READY UL CSA-EEV PRE | 1.000 EA |
| 40PA1000 | PACKAGING GROUP | 1.000 EA |
| MN416A01 | TAG-INSTAL-MAINT no wire (1200/bx) 5/18 | 1.000 EA |

AC Induction Motor Performance Data

Record # 57331 - Typical performance - not guaranteed values

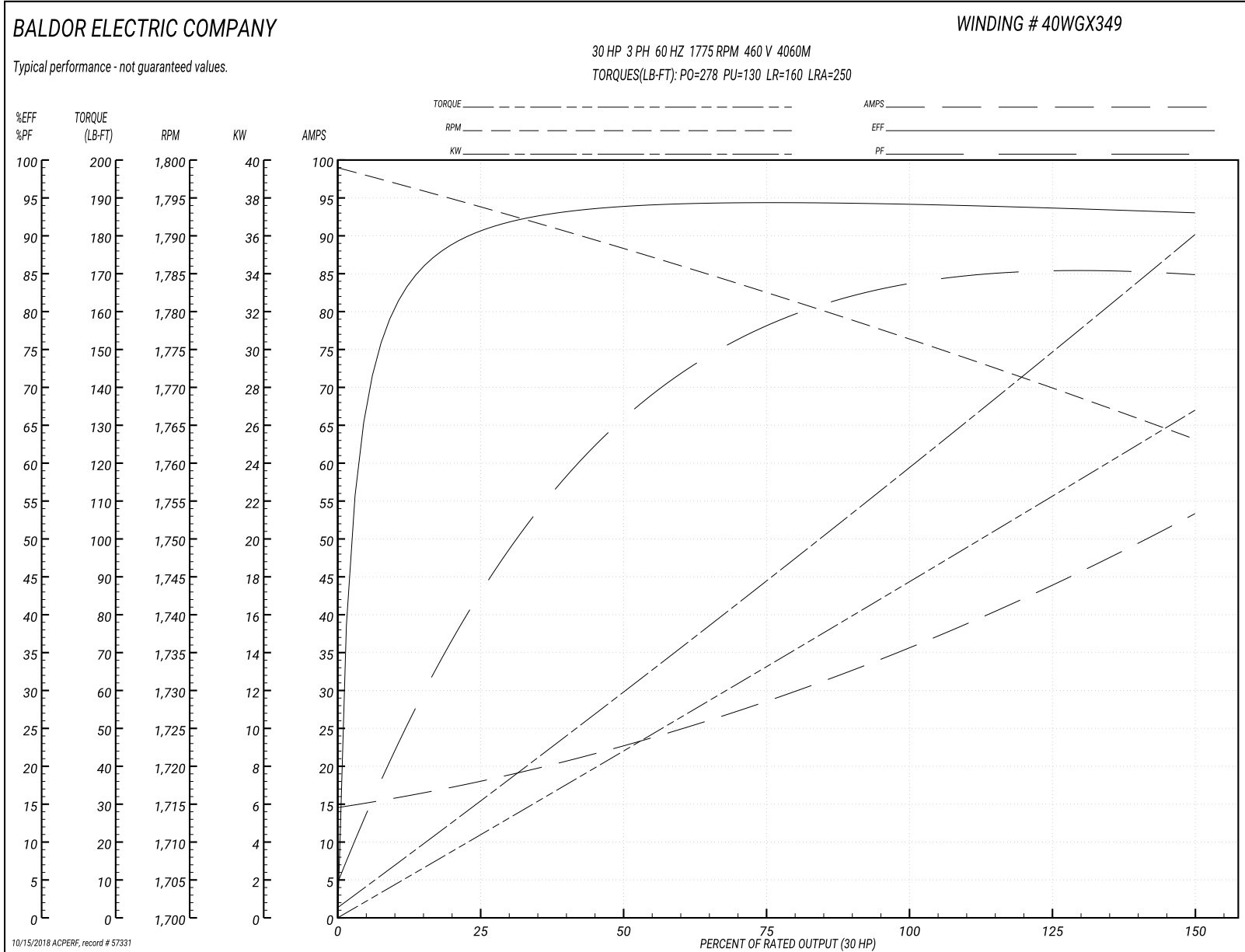
| | | |
|-------------------------------|--------------------|------------------------|
| Winding: 40WGX349-R001 | Type: 4060M | Enclosure: OPSB |
|-------------------------------|--------------------|------------------------|

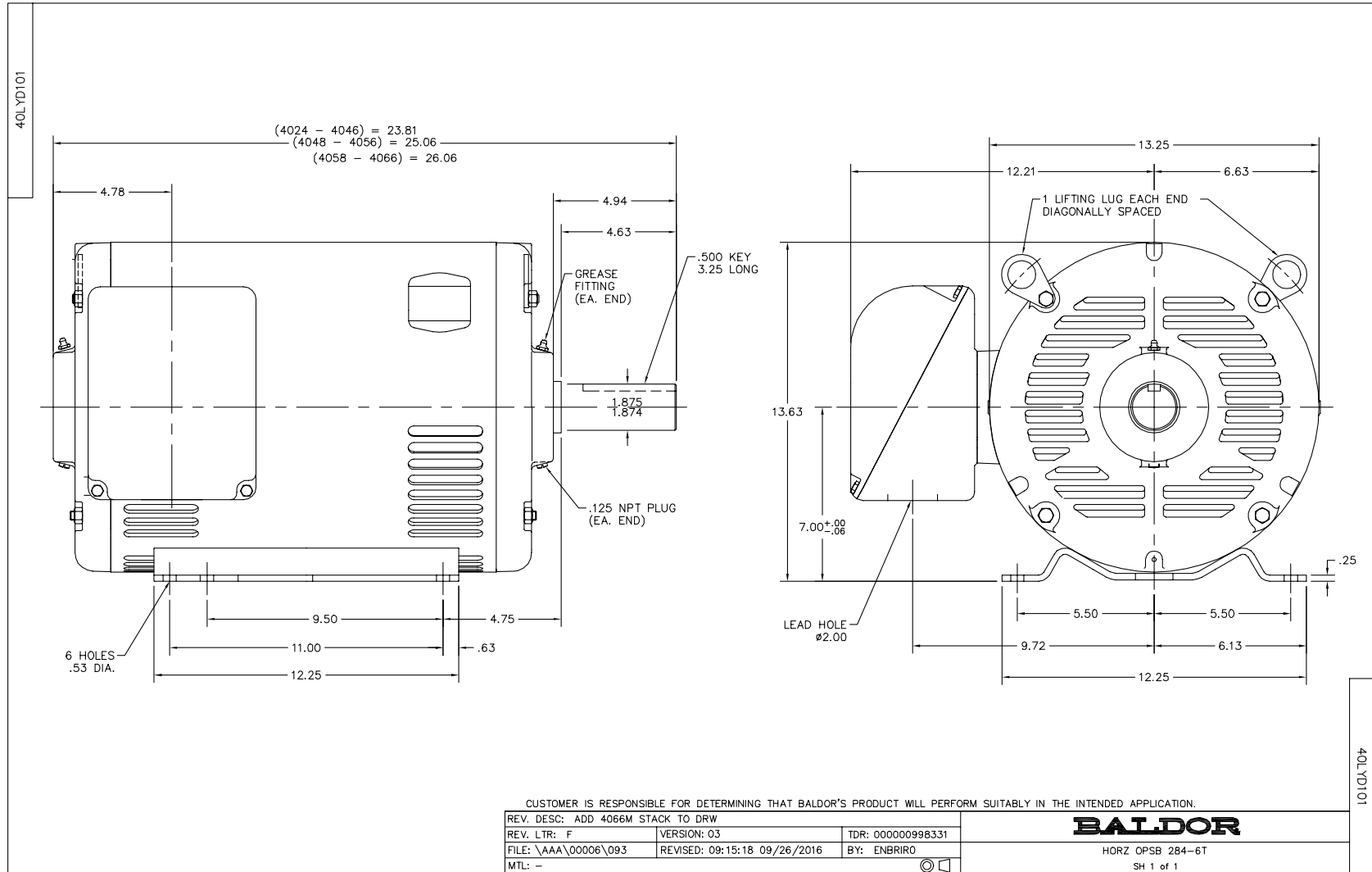
| Nameplate Data | | | | 460 V, 60 Hz: High Voltage Connection | |
|-----------------------|--------------|--------------|----|------------------------------------------|-------------------------|
| Rated Output (HP) | 30 | | | Full Load Torque | 88.8 LB-FT |
| Volts | 230/460 | | | Start Configuration | direct on line |
| Full Load Amps | 72/36 | | | Breakdown Torque | 278 LB-FT |
| R.P.M. | 1775 | | | Pull-up Torque | 130 LB-FT |
| Hz | 60 | Phase | 3 | Locked-rotor Torque | 160 LB-FT |
| NEMA Design Code | A | KVA Code | H | Starting Current | 250 A |
| Service Factor (S.F.) | 1.15 | | | No-load Current | 15.1 A |
| NEMA Nom. Eff. | 94.1 | Power Factor | 82 | Line-line Res. @ 25°C | 0.204 Ω |
| Rating - Duty | 40C AMB-CONT | | | Temp. Rise @ Rated Load | 29°C |
| S.F. Amps | | | | Temp. Rise @ S.F. Load | 35°C |
| | | | | Locked-rotor Power Factor | 31.3 |
| | | | | Rotor inertia | 4.77 LB-FT ² |

Load Characteristics 460 V, 60 Hz, 30 HP

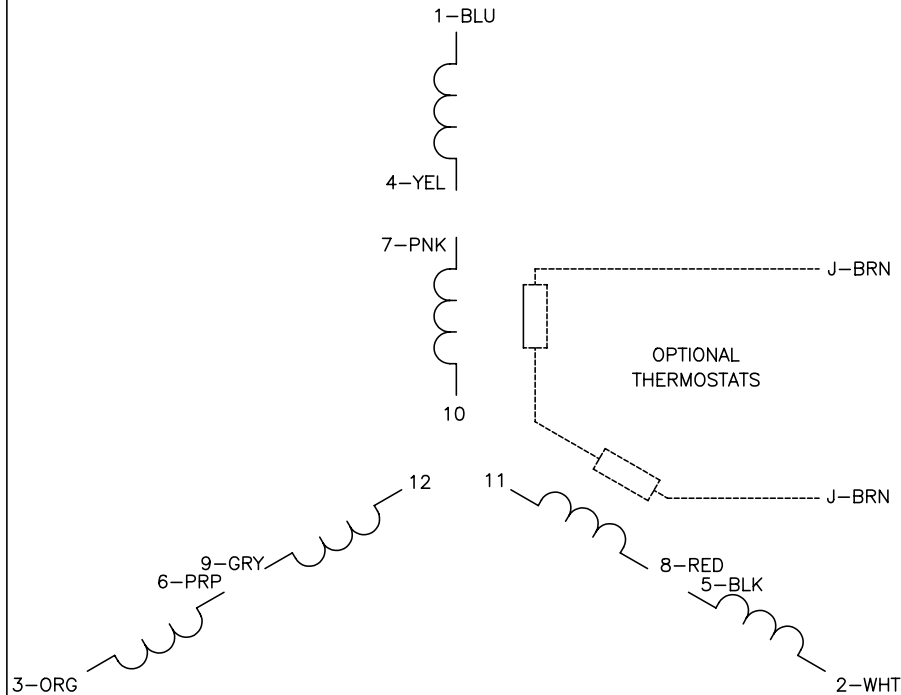
| % of Rated Load | 25 | 50 | 75 | 100 | 125 | 150 | S.F. |
|-----------------|------|------|------|------|------|------|------|
| Power Factor | 45 | 67 | 78 | 83 | 85 | 86 | 84 |
| Efficiency | 90.4 | 93.9 | 94.4 | 94.4 | 93.5 | 93.1 | 93.9 |
| Speed | 1794 | 1788 | 1782 | 1777 | 1770 | 1763 | 1773 |
| Line amperes | 17.4 | 22.3 | 28.8 | 36.1 | 44.2 | 52.9 | 41 |

Performance Graph at 460V, 60Hz, 30.0HP Typical performance - Not guaranteed values

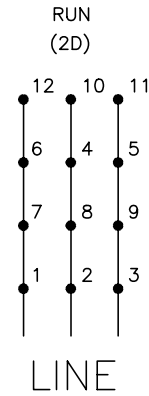
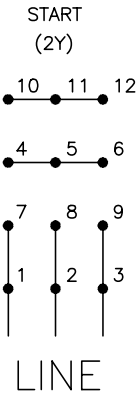




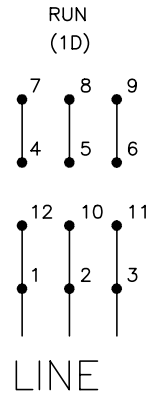
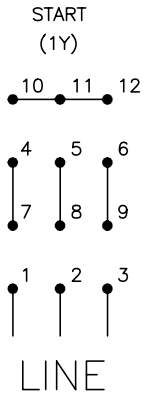
CD0104



LOW VOLTAGE



HIGH VOLTAGE



NOTES:

1. INTERCHANGE ANY TWO LINE LEADS TO REVERSE ROTATION.
2. OPTIONAL THERMOSTATS ARE PROVIDED WHEN SPECIFIED.
3. ACTUAL NUMBER OF INTERNAL PARALLEL CIRCUITS MAY BE A MULTIPLE OF THOSE SHOWN ABOVE.
4. LEAD COLORS ARE OPTIONAL. LEADS MUST ALWAYS BE NUMBERED AS SHOWN.

| | | | |
|-------------------------------------------|---------|------------------------|--------------|
| REV. DESC: REVISE TO SHOW OPTIONAL COLORS | | | |
| REV. LTR: C | BY: JLP | REVISED: 01/19/99 4:24 | TDR: 0171435 |
| CD0104 | | FILE: AAA00008377 | MDL: - |
| | | MTL: - | |

BALDOR ELECTRIC Co.

3PH, DV, 12 LEADS, Y START/D RUN

CD0104

Marketing maintained PDF of MN416:

<http://www.baldor.com/support/Literature/Load.ashx/MN416?ManNumber=MN416>