

BALDOR • RELIANCE

Customer information packet

EM30007

.33HP, 1725RPM, 3PH, 60HZ, 48, 3416M, OPEN, F1

Class - None

Division - Not Applicable

Copyright © All product information within this document is subject to ABB Motors and Mechanical Inc. copyright © protection, unless otherwise noted.

4/11/2025 12:17:55 AM

Specifications

Enclosure	OPEN
Frame	48
Frame Material	Steel
Frequency	60.00 Hz
Haz Area Class and Group	None
Haz Area Division	Not Applicable
Motor Letter Type	Three Phase
Output @ Frequency	.330 HP @ 60 HZ
Phase	3
Synchronous Speed @ Frequency	1800 RPM @ 60 HZ
Voltage @ Frequency	230.0 V @ 60 HZ 460.0 V @ 60 HZ
Agency Approvals	CURUSEEV
Ambient Temperature	40 °C
Auxillary Box	No Auxillary Box
Auxillary Box Lead Termination	None
Base Indicator	Rigid
Bearing Grease Type	Polyrex EM (-20F +300F)
Blower	None
Current @ Voltage	.700 A @ 460.0 V 1.400 A @ 230.0 V 1.700 A @ 208.0 V
Design Code	B
Drip Cover	No Drip Cover
Duty Rating	CONT
Efficiency @ 100% Load	73.4 %
Electrically Isolated Bearing	Not Electrically Isolated
Feedback Device	NO FEEDBACK
Front Face Code	Standard
Front Shaft Indicator	None
Heater Indicator	No Heater
High Voltage Full Load Amps	0.7 a

Part detail

Revision	G
Type	AC
Mech. spec.	34F002
Base	
Status	PRD/A
Elec. spec.	34WGS936
Layout	34LYF002
Eff. date	12-31-2024
CD Diagram	CD0005
Poles	04
Leads	9#18
Proprietary	False
Created date	10-03-2014

Insulation Class	B
Inverter Code	Not Inverter
KVA Code	N
Lifting Lugs	No Lifting Lugs
Locked Bearing Indicator	No Locked Bearing
Motor Lead Exit	Ko Box
Motor Lead Quantity/Wire Size	9 @ 18 AWG
Motor Lead Termination	Flying Leads
Motor Standards	NEMA
Motor Type	3416M
Mounting Arrangement	F1
Number of Poles	4
Overall Length	9.13 IN
Power Factor	66
Product Family	General Purpose
Pulley End Bearing Type	Ball
Pulley Face Code	Standard
Pulley Shaft Indicator	Standard
Rodent Screen	None
RoHS Status	ROHS COMPLIANT
Service Factor	1.35
Shaft Diameter	0.500 IN
Shaft Extension Location	Pulley End
Shaft Ground Indicator	No Shaft Grounding
Shaft Rotation	Reversible
Shaft Slinger Indicator	No Slinger
Speed	1725 rpm
Speed Code	Single Speed
Starting Method	Direct on line
Thermal Device - Bearing	None
Thermal Device - Winding	None
Vibration Sensor Indicator	No Vibration Sensor
Winding Thermal 1	None
Winding Thermal 2	None

Nameplate

NP3155L									
CAT.NO.	EM30007								
SPEC.	34F002S936G1								
HP	.33								
VOLTS	230/460								
AMP	1.4/.7								
RPM	1725								
FRAME	48		HZ	60		PH	3		
SER.F.	1.35	CODE	N	DES	B	CL	B		
F.L. AVG. EFF.	73.4	PF	66						
RATING	40C AMB-CONT								
CC									
DE	6203		ODE	6203					
ENCL	OPEN	SN							
	SFA 1.6/.8								

AC Induction Motor Performance Data

Record # 47464

Typical performance - not guaranteed values

Winding: 34WGS936-R002		Type: 3416M		Enclosure: OPEN	
Nameplate Data			460 V, 60 Hz: High Voltage Connection		
Rated Output (HP)	.33	Full Load Torque	1.007 LB-FT		
Volts	230/460	Start Configuration	direct on line		
Full Load Amps	1.4/.7	Breakdown Torque	4.56 LB-FT		
R.P.M.	1725	Pull-up Torque	3.18 LB-FT		
Hz	60 Phase	3	Locked-rotor Torque	3.82 LB-FT	
NEMA Design Code	B KVA Code	N	Starting Current	4.74 A	
Service Factor (S.F.)	1.35		No-load Current	0.445 A	
NEMA Nom. Eff.	73.4	Power Factor	66	Line-line Res. @ 25°C	43.915 Ω
Rating - Duty	40C AMB-CONT		Temp. Rise @ Rated Load	18°C	
S.F. Amps	1.6/.8		Temp. Rise @ S.F. Load	24°C	
			Locked-rotor Power Factor	58	
			Rotor inertia	0.0381 LB-FT ²	

Load Characteristics 460 V, 60 Hz, 0.33 HP

% of Rated Load	25	50	75	100	125	150	S.F.
Power Factor	30	45	57	66	73	78	75
Efficiency	55.9	69.8	74.8	76.7	76.9	76.2	76.6
Speed	1785.9	1772.3	1758.5	1743.2	1726.8	1709.1	1720
Line amperes	0.458	0.497	0.55	0.617	0.696	0.787	0.732

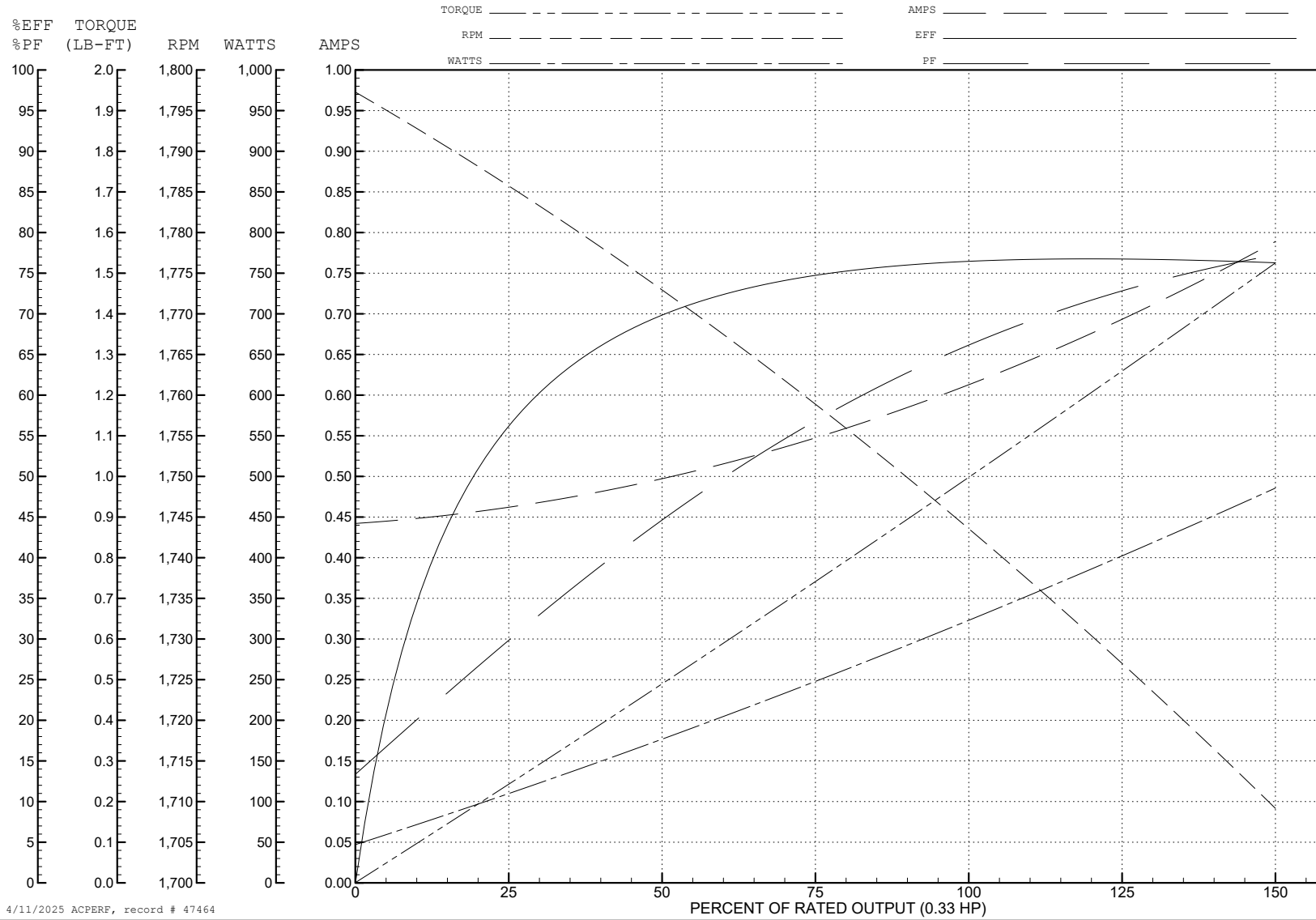
ABB Motors and Mechanical Inc.

WINDING # 34WGS936

0.33 HP 3 PH 60 HZ 1725 RPM 460 V 3416M

Typical performance - not guaranteed values.

TORQUES (LB-FT): PO=4.56 PU=3.18 LR=3.82 LRA=4.74



4/11/2025 ACPERF, record # 47464

AC Induction Motor Performance Data

Record # 49379

Typical performance - not guaranteed values

Winding: 34WGS936-R002		Type: 3416M	Enclosure: OPEN
Nameplate Data		230 V, 60 Hz: Low Voltage Connection	
Rated Output (HP)	.33	Full Load Torque	1.01 LB-FT
Volts	230/460	Start Configuration	direct on line
Full Load Amps	1.4/.7	Breakdown Torque	4.56 LB-FT
R.P.M.	1725	Pull-up Torque	3.18 LB-FT
Hz	60 Phase 3	Locked-rotor Torque	3.82 LB-FT
NEMA Design Code	B KVA Code N	Starting Current	9.48 A
Service Factor (S.F.)	1.35	No-load Current	0.89 A
NEMA Nom. Eff.	73.4 Power Factor 66	Line-line Res. @ 25°C	10.5 Ω
Rating - Duty	40C AMB-CONT	Temp. Rise @ Rated Load	18°C
S.F. Amps	1.6/.8	Temp. Rise @ S.F. Load	23°C
		Locked-rotor Power Factor	58.4
		Rotor inertia	0.0381 LB-FT ²

Load Characteristics 230 V, 60 Hz, 0.33 HP

% of Rated Load	25	50	75	100	125	150	S.F.
Power Factor	30	45	57	66	73	78	75
Efficiency	55.8	69.9	74.8	77	76.7	76.4	76.6
Speed	1786	1772	1759	1743	1727	1709	1720
Line amperes	0.915	0.993	1.1	1.23	1.39	1.57	1.46

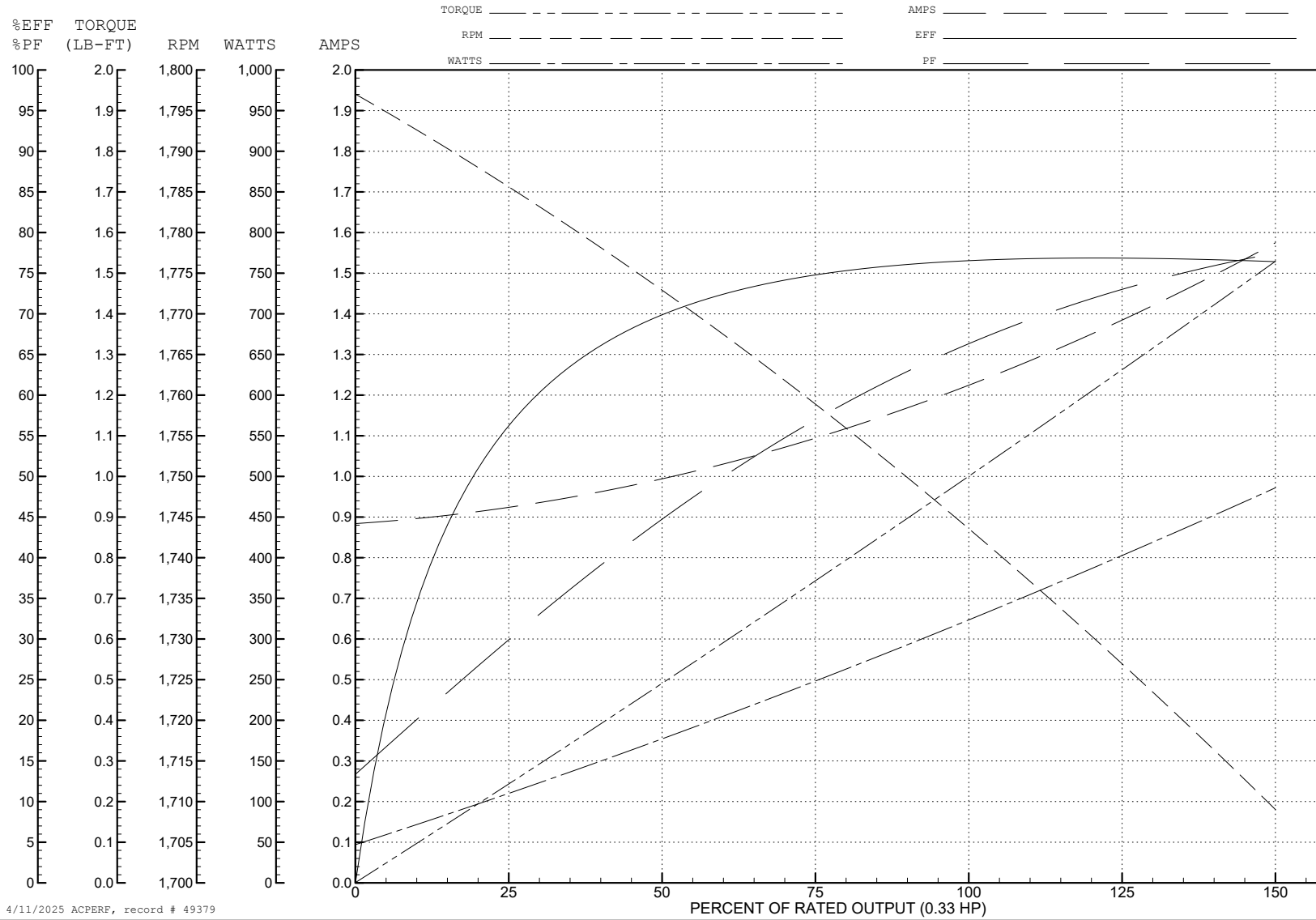
ABB Motors and Mechanical Inc.

WINDING # 34WGS936

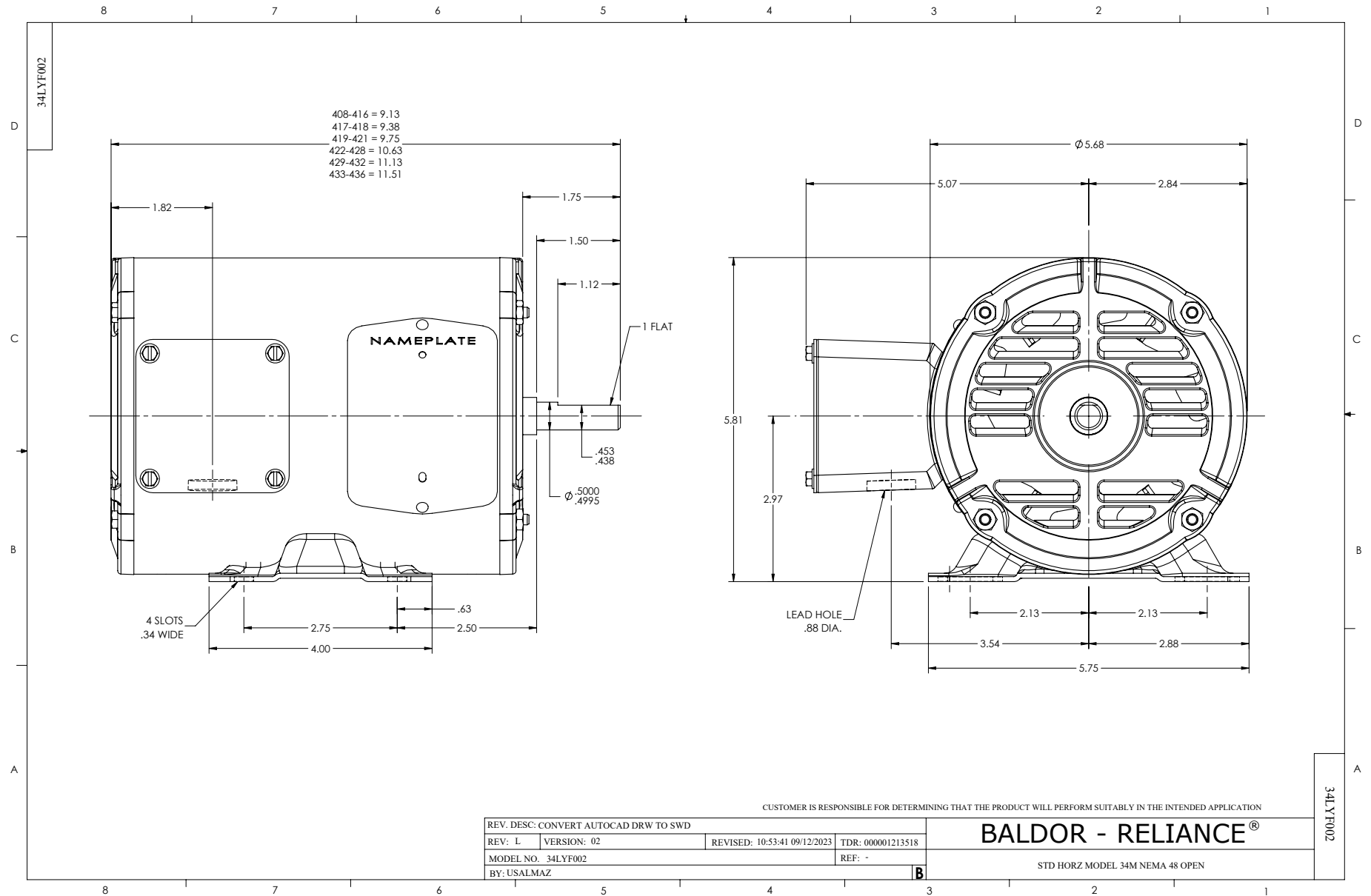
0.33 HP 3 PH 60 HZ 1725 RPM 230 V 3416M

Typical performance - not guaranteed values.

TORQUES (LB-FT): PO=4.56 PU=3.18 LR=3.82 LRA=9.48



4/11/2025 ACPERF, record # 49379



CD0005

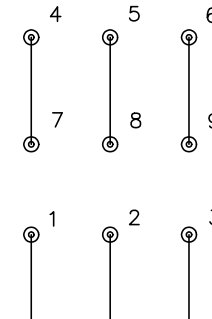


LOW VOLTAGE (2Y)



LINE

HIGH VOLTAGE (1Y)



LINE

NOTES:

1. INTERCHANGE ANY TWO LINE LEADS TO REVERSE ROTATION.
2. OPTIONAL THERMOSTATS ARE PROVIDED WHEN SPECIFIED.
3. ACTUAL NUMBER OF INTERNAL PARALLEL CIRCUITS MAY BE A MULTIPLE OF THOSE SHOWN ABOVE.
4. LEAD COLORS ARE OPTIONAL. LEADS MUST ALWAYS BE NUMBERED AS SHOWN.

CD0005

REV. DESC: REVISE TO SHOW OPTIONAL COLORS			
REV. LTR: E	BY: JLP	REVISED: 01/19/99 10:15	TDR: 0171435
S00000		FILE: AAA00005140	MDL: -
		MTL: -	

BALDOR ELECTRIC Co.

3PH, DV, 9 LEADS