

BALDOR • RELIANCE

Customer information packet

EM31112A

.75HP, 1730RPM, 3PH, 60HZ, 56, 3516M, OPEN, F1

Class - None

Division - Not Applicable

Specifications

| | |
|--------------------------------|---|
| Enclosure | OPEN |
| Frame | 56 |
| Frame Material | Steel |
| Frequency | 60.00 Hz |
| Haz Area Class and Group | None |
| Haz Area Division | Not Applicable |
| Motor Letter Type | Three Phase |
| Output @ Frequency | .750 HP @ 60 HZ |
| Phase | 3 |
| Synchronous Speed @ Frequency | 1800 RPM @ 60 HZ |
| Voltage @ Frequency | 460.0 V @ 60 HZ 208.0 V @ 60 HZ 230.0 V @ 60 HZ |
| Agency Approvals | CURUSEEV |
| Ambient Temperature | 40 °C |
| Auxillary Box | No Auxillary Box |
| Auxillary Box Lead Termination | None |
| Base Indicator | Rigid |
| Bearing Grease Type | Polyrex EM (-20F +300F) |
| Blower | None |
| Current @ Voltage | 1.000 A @ 460.0 V 2.000 A @ 230.0 V 2.100 A @ 208.0 V |
| Design Code | B |
| Drip Cover | No Drip Cover |
| Duty Rating | CONT |
| Efficiency @ 100% Load | 81.1 % |
| Electrically Isolated Bearing | Not Electrically Isolated |
| Feedback Device | NO FEEDBACK |
| Front Face Code | Standard |
| Front Shaft Indicator | None |
| Heater Indicator | No Heater |

Part detail

| | |
|--------------|------------|
| Revision | S |
| Type | AC |
| Mech. spec. | 35B011 |
| Base | |
| Status | PRD/A |
| Elec. spec. | 35WGL158 |
| Layout | 35LYB011 |
| Eff. date | 01-02-2025 |
| CD Diagram | CD0007 |
| Poles | 04 |
| Leads | 12#18 |
| Proprietary | False |
| Created date | 09-29-2014 |

| | |
|-------------------------------|----------------------------|
| High Voltage Full Load Amps | 1.0 a |
| Insulation Class | F |
| Inverter Code | Not Inverter |
| IP Rating | NONE |
| KVA Code | J |
| Lifting Lugs | No Lifting Lugs |
| Locked Bearing Indicator | No Locked Bearing |
| Motor Lead Exit | Ko Box |
| Motor Lead Quantity/Wire Size | 12 @ 18 AWG |
| Motor Lead Termination | Flying Leads |
| Motor Standards | NEMA |
| Motor Type | 3516M |
| Mounting Arrangement | F1 |
| Number of Poles | 4 |
| Overall Length | 11.07 IN |
| Power Factor | 84 |
| Product Family | General Purpose |
| Pulley End Bearing Type | Ball |
| Pulley Face Code | Standard |
| Pulley Shaft Indicator | Standard |
| Rodent Screen | None |
| Service Factor | 1.25 |
| Shaft Diameter | 0.625 IN |
| Shaft Extension Location | Pulley End |
| Shaft Ground Indicator | No Shaft Grounding |
| Shaft Rotation | Reversible |
| Shaft Slinger Indicator | No Slinger |
| Speed | 1730 rpm |
| Speed Code | Single Speed |
| Starting Method | Direct on line |
| Thermal Device - Bearing | None |
| Thermal Device - Winding | None |
| Vibration Sensor Indicator | No Vibration Sensor |
| Winding Thermal 1 | Automatic Thermal Overload |

Winding Thermal 1 Location

SB

Winding Thermal 2

None

Nameplate

| NP3273L | | | | | | | | | |
|-----------------------|-----------------|-------------|------------|------------|---|-----------|---|--|--|
| CAT.NO. | EM31112A | | | | | | | | |
| SPEC. | 35B011L158G1 | | | | | | | | |
| HP | .75 | | | | | | | | |
| VOLTS | 208-230/460 | | | | | | | | |
| AMP | 2.1-2/1 | | | | | | | | |
| RPM | 1730 | | | | | | | | |
| FRAME | 56 | | HZ | 60 | | PH | 3 | | |
| SER.F. | 1.25 | CODE | J | DES | B | CL | F | | |
| F.L. AVG. EFF. | 81.1 | PF | 84 | | | | | | |
| RATING | 40C AMB-CONT | | | | | | | | |
| CC | | | | | | | | | |
| DE | 6205 | | ODE | 6203 | | | | | |
| ENCL | OPEN | SN | | | | | | | |
| | SFA 2.9-2.4/1.2 | | | | | | | | |

AC Induction Motor Performance Data

Record # 47500

Typical performance - not guaranteed values

| Winding: 35WGL158-R001 | | Type: 3516M | Enclosure: OPEN | | |
|------------------------|-------------|------------------------|--|---------------------------|--------|
| Nameplate Data | | | 460 V, 60 Hz: High Voltage Connection | | |
| Rated Output (HP) | .75 | Full Load Torque | 2.26 LB-FT | | |
| Volts | 208-230/460 | Start Configuration | direct on line | | |
| Full Load Amps | 2.1-2/1 | Breakdown Torque | 9.2 LB-FT | | |
| R.P.M. | 1730 | Pull-up Torque | 4.2 LB-FT | | |
| Hz | 60 Phase | 3 | Locked-rotor Torque | 5.25 LB-FT | |
| NEMA Design Code | B | KVA Code | J | Starting Current | 7.03 A |
| Service Factor (S.F.) | 1.25 | No-load Current | 0.51 A | | |
| NEMA Nom. Eff. | 81.1 | Power Factor | 84 | Line-line Res. @ 25°C | 32.1 Ω |
| Rating - Duty | 40C | AMB-CONT | Temp. Rise @ Rated Load | | 31°C |
| S.F. Amps | 2.6-2.4/1.2 | Temp. Rise @ S.F. Load | | 42°C | |
| | | | Rotor inertia | 0.0946 LB-FT ² | |

Load Characteristics 460 V, 60 Hz, 0.75 HP

| % of Rated Load | 25 | 50 | 75 | 100 | 125 | 150 | S.F. |
|-----------------|-------|-------|-------|------|------|------|------|
| Power Factor | 44 | 66 | 77 | 84 | 89 | 90 | 81 |
| Efficiency | 71.8 | 80.6 | 82.3 | 82 | 80.8 | 78.6 | 82.8 |
| Speed | 1784 | 1768 | 1752 | 1732 | 1711 | 1687 | 1737 |
| Line amperes | 0.569 | 0.668 | 0.822 | 1.01 | 1.21 | 1.48 | 1.19 |

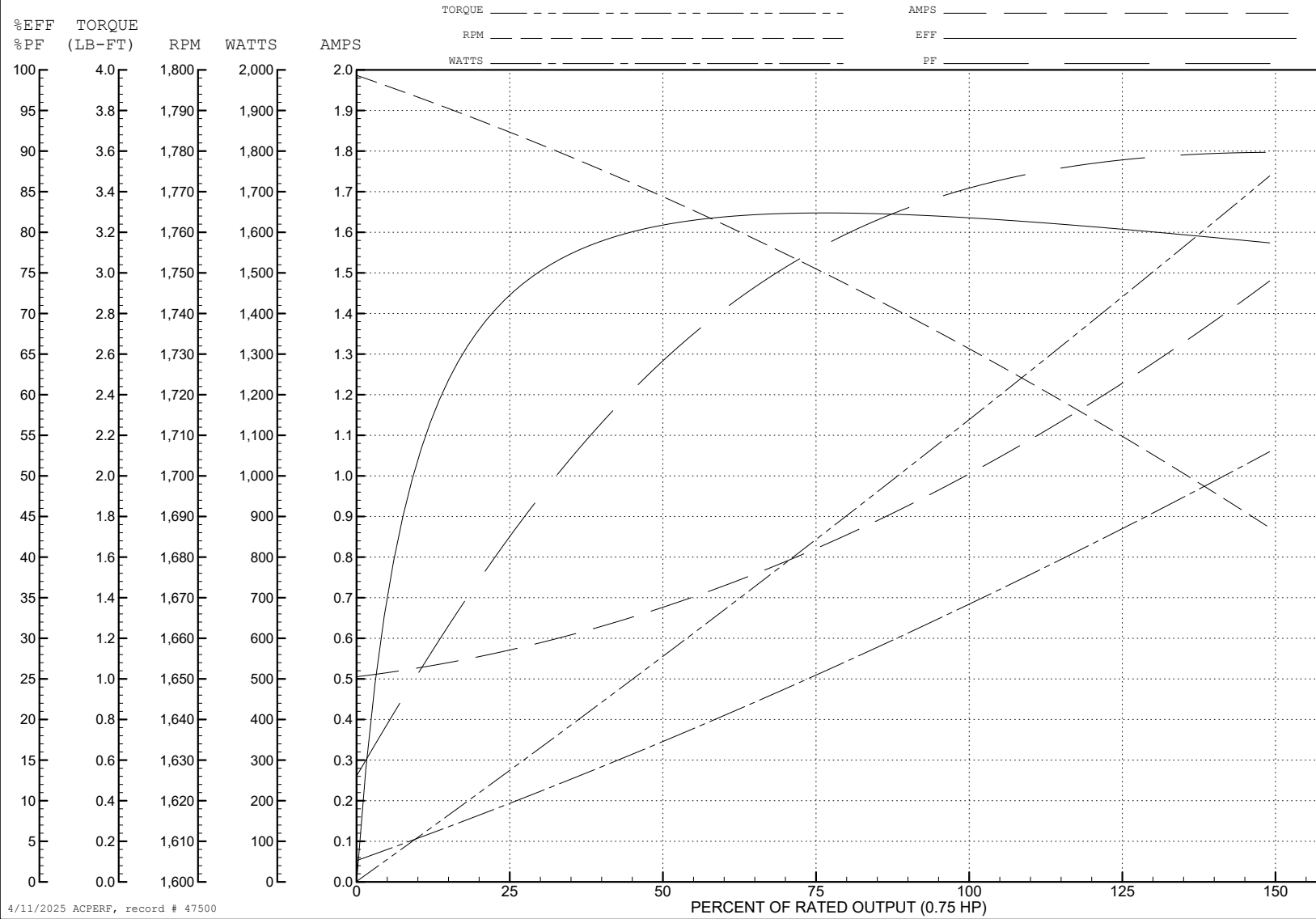
ABB Motors and Mechanical Inc.

WINDING # 35WGL158

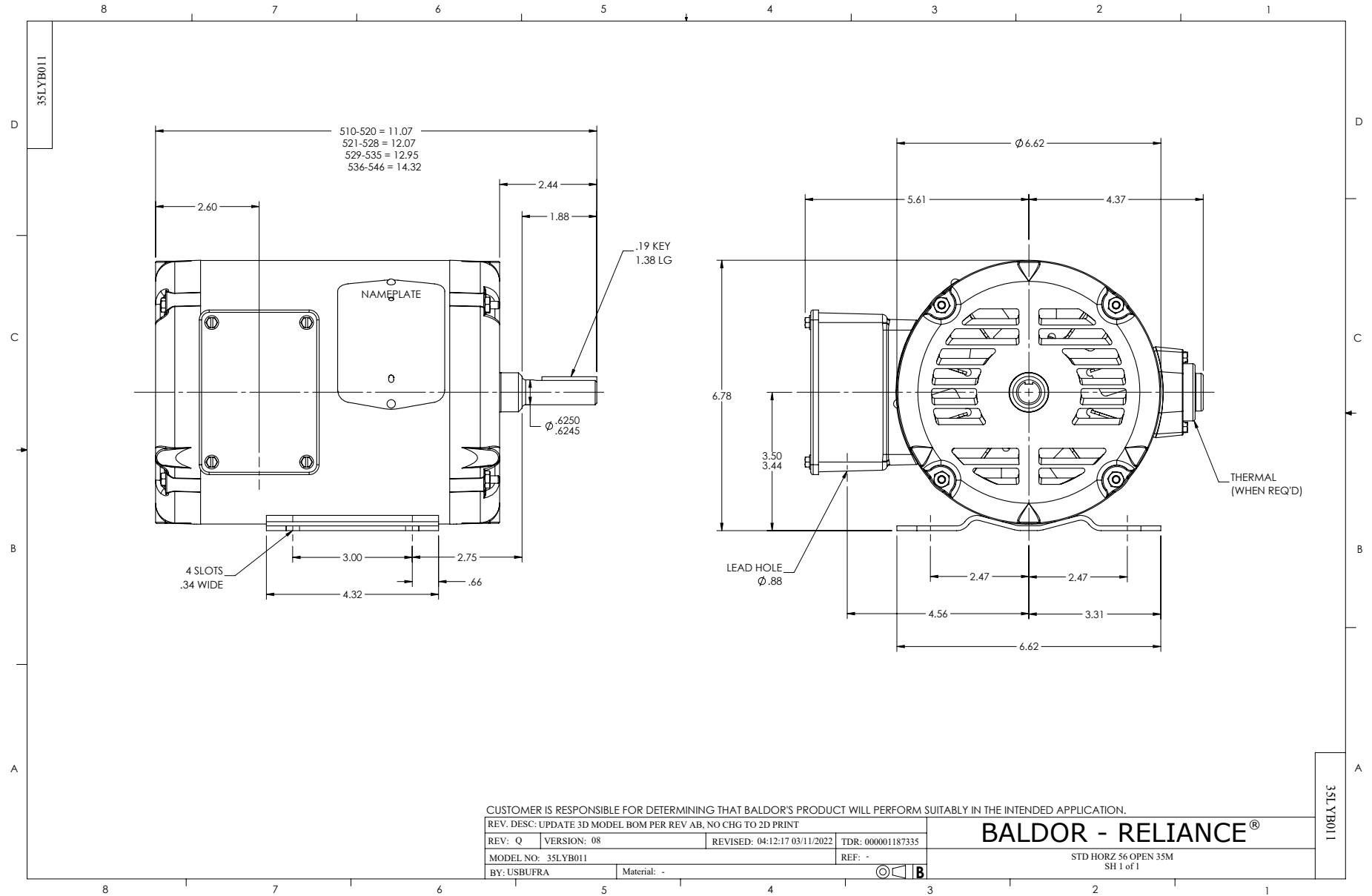
0.75 HP 3 PH 60 HZ 1730 RPM 460 V 3516M

Typical performance - not guaranteed values.

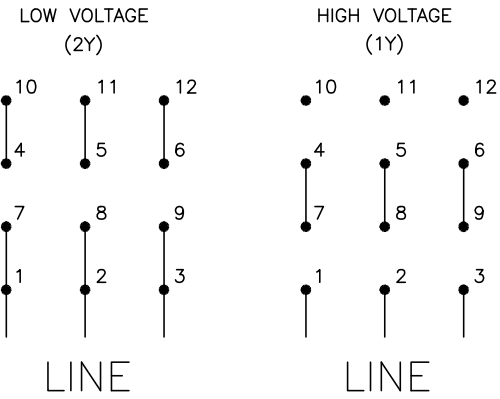
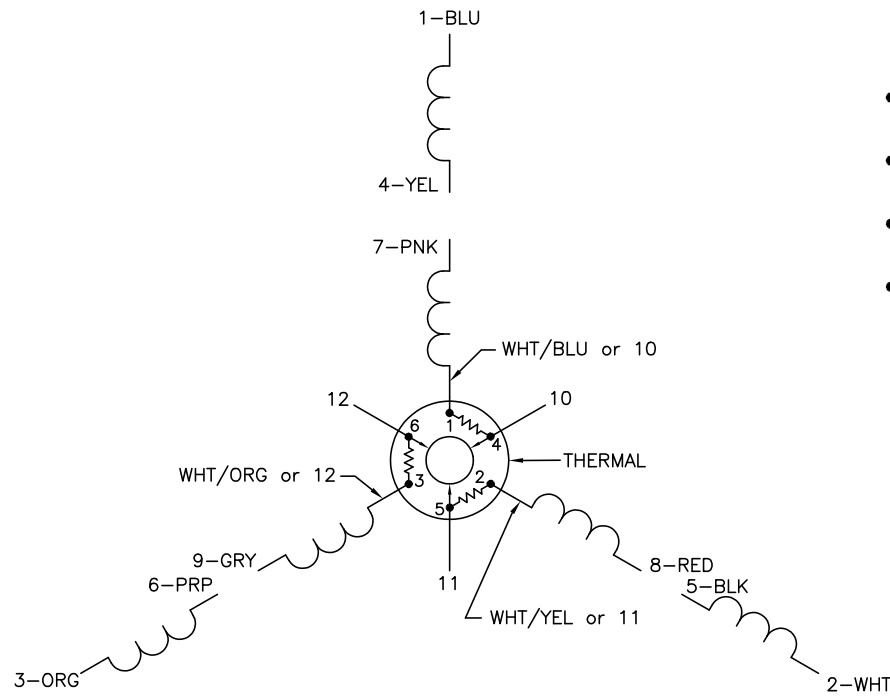
TORQUES (LB-FT): PO=9.2 PU=4.2 LR=5.25 LRA=7.03



4/11/2025 ACPERF, record # 47500



CD0007



- NOTES:
1. INTERCHANGE ANY TWO LINE LEADS TO REVERSE ROTATION.
 2. ACTUAL NUMBER OF INTERNAL PARALLEL CIRCUITS MAY VARY.
 3. LEAD COLORS ARE OPTIONAL. LEADS MUST ALWAYS BE NUMBERED AS SHOWN.

CD0007

| | | | |
|----------------------------------|---------|------------------------|--------------|
| REV. DESC: ADDED "CK" PLANT CODE | | | |
| REV. LTR: E | BY: EAH | REVISED: 05/06/99 17:1 | TDR: 0181040 |
| L00000 | | FILE: AAA00008370 | MDL: - |
| | | MTL: - | |

BALDOR ELECTRIC Co.

3PH, DV, THERMAL, 12 LEADS