



---

# Customer information packet

## EM3556-5

1HP, 1170RPM, 3PH, 60HZ, 56H, 3526M, TEFC, F1, N

Class - None

Division - Not Applicable

## Specifications

Enclosure	TEFC
Frame	56H
Frame Material	Steel
Frequency	60.00 Hz
Haz Area Class and Group	None
Haz Area Division	Not Applicable
Motor Letter Type	Three Phase
Output @ Frequency	1.000 HP @ 60 HZ
Phase	3
Synchronous Speed @ Frequency	1200 RPM @ 60 HZ
Voltage @ Frequency	575.0 V @ 60 HZ
Agency Approvals	NEMA PREMIUM NEMA_PREMIUM UR CSA EEV
Ambient Temperature	46 °C
Auxillary Box	No Auxillary Box
Auxillary Box Lead Termination	None
Base Indicator	Rigid
Bearing Grease Type	Polyrex EM (-20F +300F)
Blower	None
Current @ Voltage	1.400 A @ 575.0 V
Design Code	B
Drip Cover	No Drip Cover
Duty Rating	CONT
Efficiency @ 100% Load	82.5 %
Electrically Isolated Bearing	Not Electrically Isolated
Feedback Device	NO FEEDBACK
Front Shaft Indicator	None
Heater Indicator	No Heater
High Voltage Full Load Amps	1.4 a
Insulation Class	F

## Part detail

Revision	C
Type	AC
Mech. spec.	35H876
Base	
Status	PRD/A
Elec. spec.	35WGG117
Layout	35LYH876
Eff. date	11-07-2024
CD Diagram	CD0006
Poles	06
Leads	3#18
Proprietary	False
Created date	09-09-2022

Inverter Code	Inverter Ready
KVA Code	J
Lifting Lugs	No Lifting Lugs
Locked Bearing Indicator	No Locked Bearing
Motor Lead Quantity/Wire Size	3 @ 18 AWG
Motor Lead Termination	Flying Leads
Motor Standards	NEMA
Motor Type	3526M
Mounting Arrangement	F1
Number of Poles	6
Overall Length	12.91 IN
Power Factor	65
Product Family	General Purpose
Pulley End Bearing Type	Ball
Pulley Face Code	Standard
Pulley Shaft Indicator	Standard
Rodent Screen	None
Service Factor	1.15
Shaft Diameter	0.625 IN
Shaft Ground Indicator	No Shaft Grounding
Shaft Rotation	Reversible
Shaft Slinger Indicator	No Slinger
Speed	1170 rpm
Speed Code	Single Speed
Starting Method	Direct on line
Thermal Device - Bearing	None
Thermal Device - Winding	None
Vibration Sensor Indicator	No Vibration Sensor
Winding Thermal 1	None
Winding Thermal 2	None

**Nameplate**

<b>NP3441L</b>									
<b>CAT.NO.</b>	EM3556-5								
<b>SPEC.</b>	35H876G117G1								
<b>HP</b>	1								
<b>VOLTS</b>	575								
<b>AMP</b>	1.4								
<b>RPM</b>	1170								
<b>FRAME</b>	56H		<b>HZ</b>	60		<b>PH</b>	3		
<b>SER.F.</b>	1.15	<b>CODE</b>	J	<b>DES</b>	B	<b>CL</b>	F		
<b>NEMA-NOM-EFF</b>	82.5	<b>PF</b>	65						
<b>RATING</b>	46C AMB-CONT								
<b>CC</b>	010A								
<b>DE</b>	6205		<b>ODE</b>	6203					
<b>ENCL</b>	TEFC	<b>SN</b>							
<b>VPWM INVERTER READY</b>									
<b>CT6-60H(10:1)VT3-60H(20:1</b>									
	SFA 1.5								

**AC Induction Motor Performance Data**

Record # 82332

Typical performance - not guaranteed values

Winding: 35WGG117-R002		Type: 3526M		Enclosure: TEFC	
<b>Nameplate Data</b>			<b>575 V, 60 Hz: Single Voltage Motor</b>		
Rated Output (HP)	1	Full Load Torque	4.48 LB-FT		
Volts	575	Start Configuration	direct on line		
Full Load Amps	1.35	Breakdown Torque	11.99 LB-FT		
R.P.M.	1170	Pull-up Torque	7.12 LB-FT		
Hz	60 Phase	3	Locked-rotor Torque	8.69 LB-FT	
NEMA Design Code	B	KVA Code	J	Starting Current	7.31 A
Service Factor (S.F.)	1.15		No-load Current	0.825 A	
NEMA Nom. Eff.	82.5	Power Factor	67	Line-line Res. @ 25°C	32.9 Ω
Rating - Duty	46C AMB-CONT		Temp. Rise @ Rated Load	46°C	
S.F. Amps			Temp. Rise @ S.F. Load	56°C	
			Locked-rotor Power Factor	48.5	
			Rotor inertia	0.189 lb-ft <sup>2</sup>	

**Load Characteristics 575 V, 60 Hz, 1 HP**

% of Rated Load	25	50	75	100	125	150	S.F.
Power Factor	29	47	59	67	72	75	70
Efficiency	73.4	81.8	83.4	83.1	81.6	79.1	82.2
Speed	1193	1186	1178	1169	1159	1147	1163
Line amperes	0.865	0.976	1.13	1.34	1.59	1.88	1.49

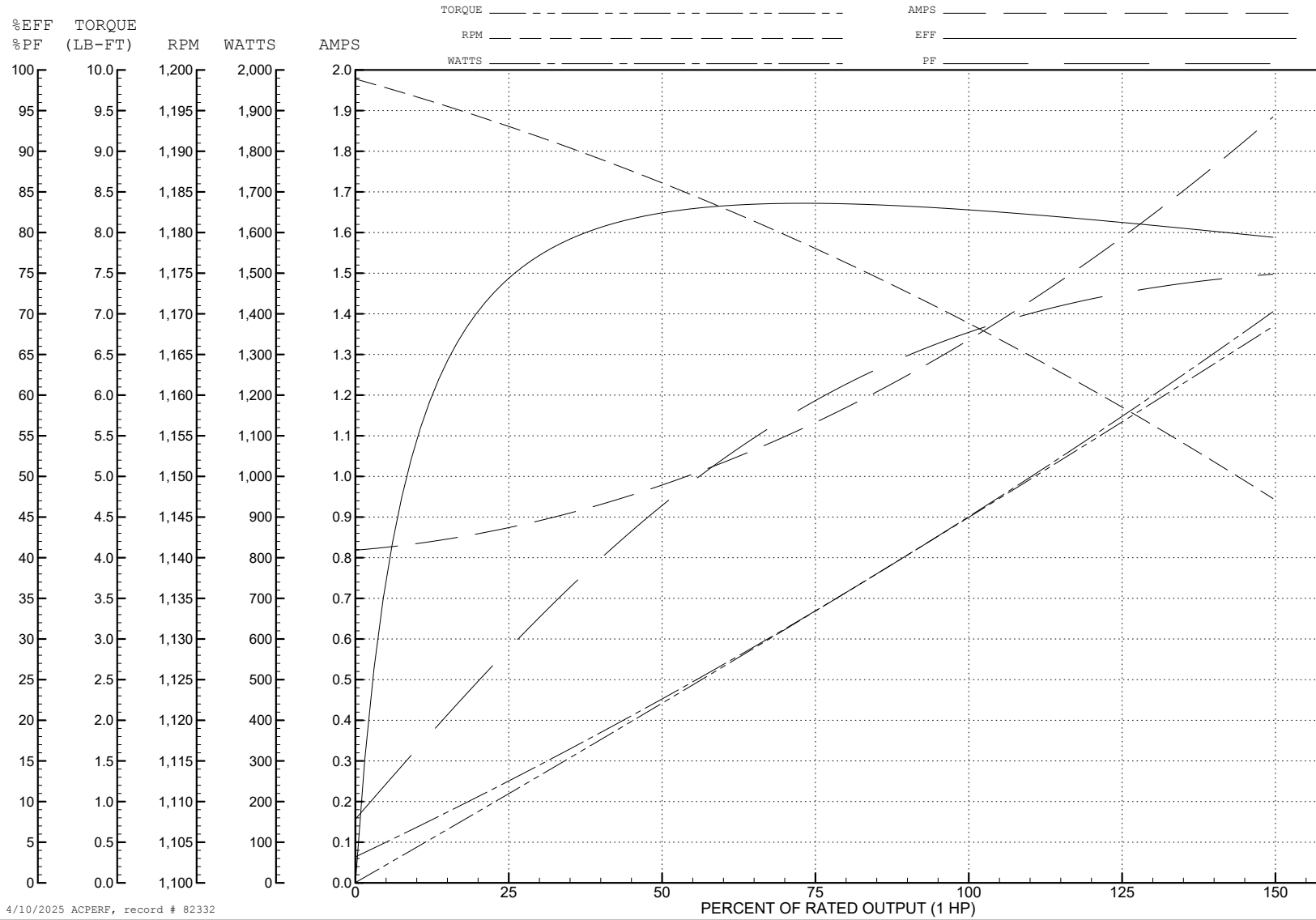
ABB Motors and Mechanical Inc.

WINDING # 35WGG117

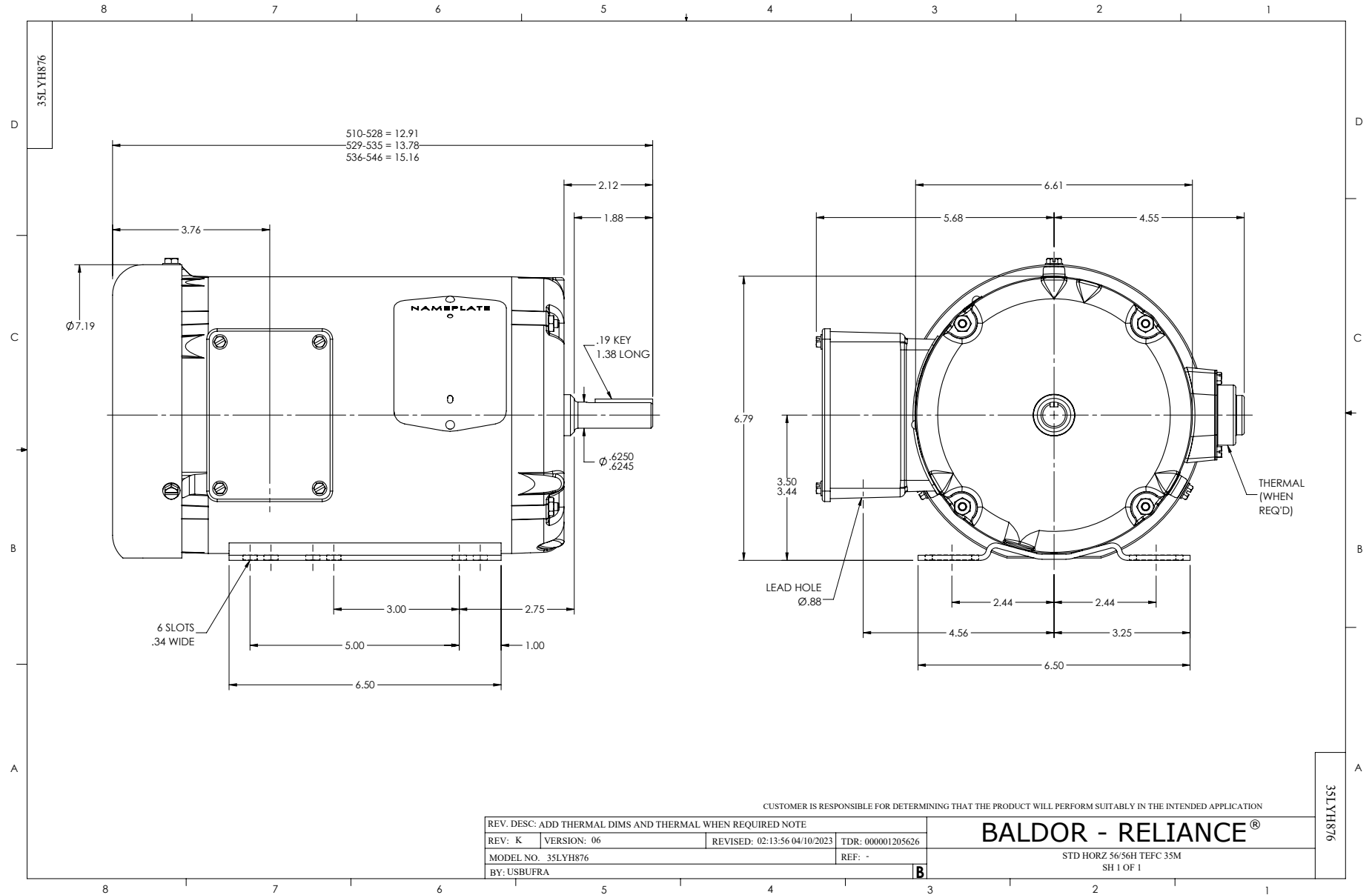
Typical performance - not guaranteed values.

1 HP 3 PH 60 HZ 1170 RPM 575 V 3526M

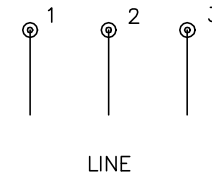
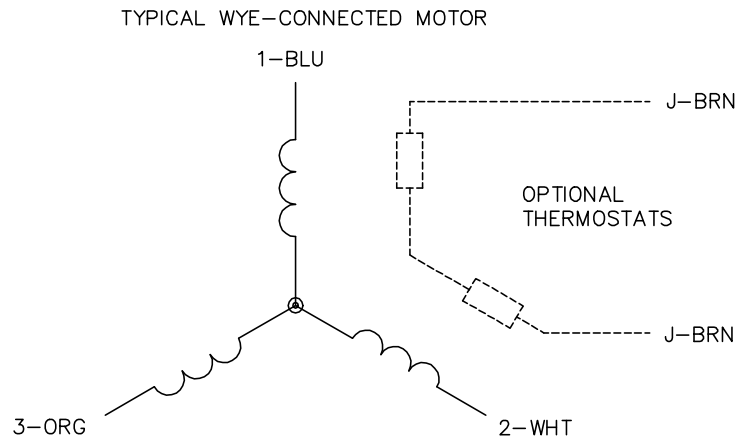
TORQUES (LB-FT): PO=11.99 PU=7.12 LR=8.69 LRA=7.31



4/10/2025 ACPERF, record # 82332



CD0006



NOTES:

1. THREE LEAD MOTOR MAY BE EITHER WYE CONNECTED OR DELTA CONNECTED.
2. INTERCHANGE ANY TWO LINE LEADS TO REVERSE ROTATION.
3. OPTIONAL THERMOSTATS ARE PROVIDED WHEN SPECIFIED.
4. ACTUAL NUMBER OF INTERNAL PARALLEL CIRCUITS MAY VARY.
5. LEAD COLORS ARE OPTIONAL. LEADS MUST BE NUMBERED AS SHOWN.

CD0006

REV. DESC: ADD CLASS CONN00000007		
REV. LTR: E	VERSION: 01	TDR: 000001099922
FILE: \AAA\00005\141	REVISED: 10:24:49 02/19/2019	BY: ENBRIRO
MTL: -	© □	

**BALDOR - RELIANCE®**

3PH, SV, 3 LEADS, WYE OR DELTA CONNECTED

SH 1 of 1