



Customer information packet

EM3614T-5

2HP, 1175RPM, 3PH, 60HZ, 184T, 3644M, TEFC, F1

Class - None

Division - Not Applicable

Specifications

Enclosure	TEFC
Frame	184T
Frame Material	Steel
Frequency	60.00 Hz
Haz Area Class and Group	None
Haz Area Division	Not Applicable
Motor Letter Type	Three Phase
Output @ Frequency	2.000 HP @ 60 HZ
Phase	3
Synchronous Speed @ Frequency	1200 RPM @ 60 HZ
Voltage @ Frequency	575.0 V @ 60 HZ
Agency Approvals	CURUSEEV NEMA PREMIUM NEMA_PREMIUM UR CSA EEV
Ambient Temperature	40 °C
Auxillary Box	No Auxillary Box
Auxillary Box Lead Termination	None
Base Indicator	Rigid
Bearing Grease Type	Polyrex EM (-20F +300F)
Blower	None
Current @ Voltage	2.800 A @ 575.0 V
Design Code	A
Drip Cover	No Drip Cover
Duty Rating	CONT
Efficiency @ 100% Load	88.5 %
Electrically Isolated Bearing	Not Electrically Isolated
Feedback Device	NO FEEDBACK
Front Face Code	Standard
Front Shaft Indicator	None
Heater Indicator	No Heater

Part detail

Revision	K
Type	AC
Mech. spec.	36G271
Base	
Status	PRD/A
Elec. spec.	36WGS955
Layout	36LYG271
Eff. date	06-03-2024
CD Diagram	CD0006
Poles	06
Leads	3#16
Proprietary	False
Created date	06-04-2012

High Voltage Full Load Amps	2.8 a
Insulation Class	F
Inverter Code	Inverter Ready
KVA Code	M
Lifting Lugs	Standard Lifting Lugs
Locked Bearing Indicator	No Locked Bearing
Motor Lead Exit	Ko Box
Motor Lead Quantity/Wire Size	3 @ 16 AWG
Motor Lead Termination	Flying Leads
Motor Standards	NEMA
Motor Type	3644M
Mounting Arrangement	F1
Number of Poles	6
Overall Length	18.05 IN
Power Factor	60
Product Family	General Purpose
Pulley End Bearing Type	Ball
Pulley Face Code	Standard
Pulley Shaft Indicator	Standard
Rodent Screen	None
Service Factor	1.15
Shaft Diameter	1.125 IN
Shaft Extension Location	Pulley End
Shaft Ground Indicator	No Shaft Grounding
Shaft Rotation	Reversible
Shaft Slinger Indicator	No Slinger
Speed	1175 rpm
Speed Code	Single Speed
Starting Method	Direct on line
Thermal Device - Bearing	None
Thermal Device - Winding	None
Vibration Sensor Indicator	No Vibration Sensor
Winding Thermal 1	None
Winding Thermal 2	None

Nameplate**NP3441L**

CAT.NO.	EM3614T-5						
SPEC.	36G271S955G1						
HP	2						
VOLTS	575						
AMP	2.8						
RPM	1175						
FRAME	184T		HZ	60		PH	3
SER.F.	1.15	CODE	M	DES	A	CL	F
NEMA-NOM-EFF	88.5	PF	60				
RATING	40C AMB-CONT						
CC	010A						
DE	6206		ODE	6205			
ENCL	TEFC	SN					

VPWM INVERTER READY**CT6-60H(10:1)VT3-60H(20:1)**

AC Induction Motor Performance Data

Record # 38674

Typical performance - not guaranteed values

Winding: 36WGS955-R001		Type: 3644M	Enclosure: TEFC
Nameplate Data		575 V, 60 Hz: Single Voltage Motor	
Rated Output (HP)	2	Full Load Torque	8.91 LB-FT
Volts	575	Start Configuration	direct on line
Full Load Amps	2.8	Breakdown Torque	40.52 LB-FT
R.P.M.	1175	Pull-up Torque	21.8 LB-FT
Hz	60 Phase	Locked-rotor Torque	28.46 LB-FT
NEMA Design Code	A KVA Code	Starting Current	22.2 A
Service Factor (S.F.)	1.15	No-load Current	1.98 A
NEMA Nom. Eff.	88.5 Power Factor	Line-line Res. @ 25°C	6.31 Ω
Rating - Duty	40C AMB-CONT	Temp. Rise @ Rated Load	34°C
S.F. Amps		Temp. Rise @ S.F. Load	39°C
		Locked-rotor Power Factor	28.9
		Rotor inertia	0.413 LB-FT ²

Load Characteristics 575 V, 60 Hz, 2 HP

% of Rated Load	25	50	75	100	125	150	S.F.
Power Factor	24	40	51	60	66	70	64
Efficiency	76.3	85.2	87.8	88.8	88.8	88.1	88.9
Speed	1197	1192	1186	1180	1173	1166	1176
Line amperes	2.05	2.23	2.49	2.81	3.19	3.63	3.04

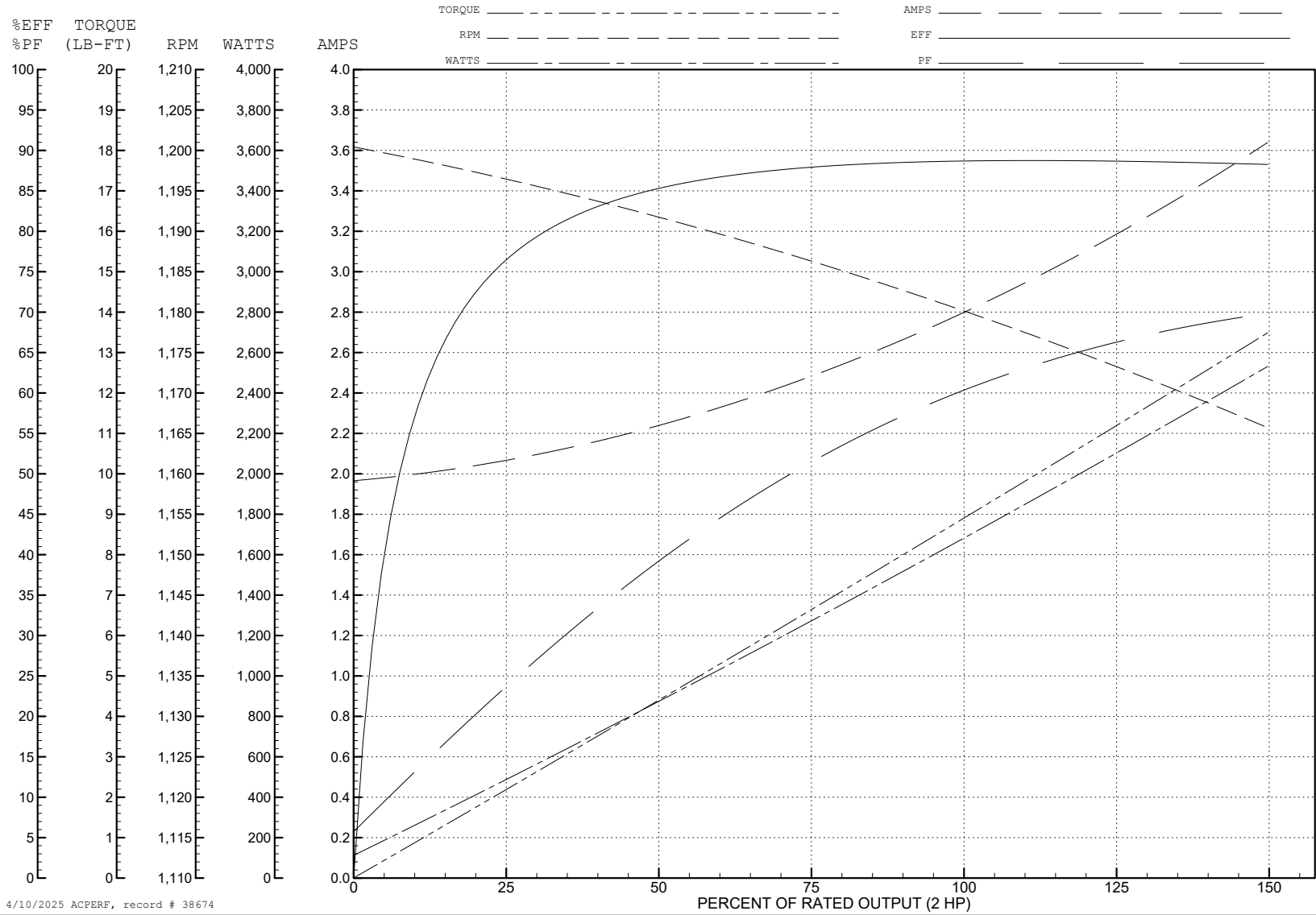
ABB Motors and Mechanical Inc.

WINDING # 36WGS955

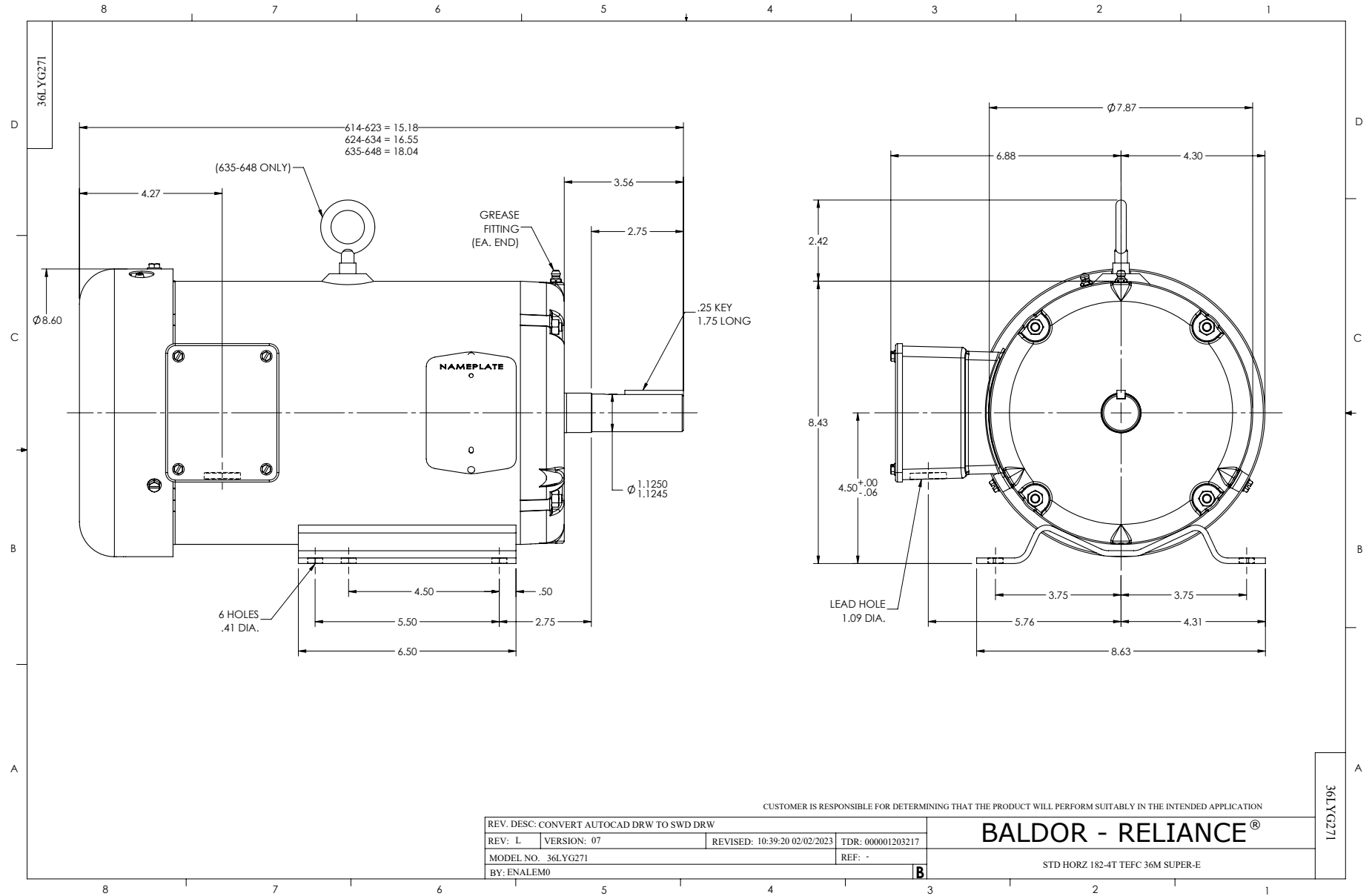
Typical performance - not guaranteed values.

2 HP 3 PH 60 HZ 1175 RPM 575 V 3644M

TORQUES (LB-FT): PO=40.52 PU=21.8 LR=28.46 LRA=22.2



4/10/2025 ACPERF, record # 38674



CD0006



NOTES:

1. THREE LEAD MOTOR MAY BE EITHER WYE CONNECTED OR DELTA CONNECTED.
2. INTERCHANGE ANY TWO LINE LEADS TO REVERSE ROTATION.
3. OPTIONAL THERMOSTATS ARE PROVIDED WHEN SPECIFIED.
4. ACTUAL NUMBER OF INTERNAL PARALLEL CIRCUITS MAY VARY.
5. LEAD COLORS ARE OPTIONAL. LEADS MUST BE NUMBERED AS SHOWN.

CD0006

REV. DESC: ADD CLASS CONN00000007		
REV. LTR: E	VERSION: 01	TDR: 000001099922
FILE: \AAA\00005\141	REVISED: 10:24:49 02/19/2019	BY: ENBRIRO
MTL: -	© □	

BALDOR - RELIANCE®

3PH, SV, 3 LEADS, WYE OR DELTA CONNECTED

SH 1 of 1