

BALDOR • RELIANCE

Customer information packet

EM3711T-58

10HP, 2900RPM, 3PH, 50HZ, 215T, 3740M, TEFC, F1

Class - None

Division - Not Applicable

Copyright © All product information within this document is subject to ABB Motors and Mechanical Inc. copyright © protection, unless otherwise noted.

4/10/2025 10:48:08 PM

Specifications

Enclosure	TEFC
Frame	215T
Frame Material	Steel
Frequency	50.00 Hz
Haz Area Class and Group	None
Haz Area Division	Not Applicable
Motor Letter Type	Three Phase
Output @ Frequency	10.000 HP @ 50 HZ
Phase	3
Synchronous Speed @ Frequency	3000 RPM @ 50 HZ
Voltage @ Frequency	400.0 V @ 50 HZ
Agency Approvals	CE CSA CURUS IE3 UKCA UR WEEE
Ambient Temperature	40 °C
Auxillary Box	No Auxillary Box
Auxillary Box Lead Termination	None
Base Indicator	Rigid
Bearing Grease Type	Polyrex EM (-20F +300F)
Blower	None
Current @ Voltage	13.100 A @ 400.0 V
Design Code	B
Drip Cover	No Drip Cover
Duty Rating	CONT
Efficiency @ 100% Load	90.2 %
Electrically Isolated Bearing	Not Electrically Isolated
Feedback Device	NO FEEDBACK
Front Face Code	Standard

Part detail

Revision	Q
Type	AC
Mech. spec.	37A001
Base	
Status	PRD/A
Elec. spec.	37WGR698
Layout	37LYA001
Eff. date	10-02-2024
CD Diagram	CD0382
Poles	02
Leads	6#14
Proprietary	False
Created date	12-08-2014

Front Shaft Indicator	None
Heater Indicator	No Heater
High Voltage Full Load Amps	13.1 a
Insulation Class	F
Inverter Code	Inverter Ready
KVA Code	H
Lifting Lugs	Standard Lifting Lugs
Locked Bearing Indicator	No Locked Bearing
Motor Lead Exit	Ko Box
Motor Lead Quantity/Wire Size	6 @ 14 AWG
Motor Lead Termination	Flying Leads
Motor Standards	NEMA
Motor Type	3740M
Mounting Arrangement	F1
Number of Poles	2
Overall Length	19.01 IN
Power Factor	89
Product Family	General Purpose
Pulley End Bearing Type	Ball
Pulley Face Code	Standard
Pulley Shaft Indicator	Standard
Rodent Screen	None
RoHS Status	ROHS COMPLIANT
Service Factor	1.15
Shaft Diameter	1.375 IN
Shaft Extension Location	Pulley End
Shaft Ground Indicator	No Shaft Grounding
Shaft Rotation	Reversible
Shaft Slinger Indicator	No Slinger
Speed	2900 rpm
Speed Code	Single Speed
Starting Method	Wye Start - Delta Run
Thermal Device - Bearing	None
Thermal Device - Winding	None

Vibration Sensor Indicator	No Vibration Sensor
Winding Thermal 1	None
Winding Thermal 2	None

Nameplate

NP3444L									
CAT NO	EM3711T-58								
SPEC.	37A001R698G1								
HP	10/7.5KW				PH	3			
VOLTS	400								
AMP	13.1								
RPM	2900 1/MIN IP54 IC411 64KG								
FRAME	215T		HZ	50		I.P.	44		
SER.F.	1.15	CODE	H	DES	B	CL	F		
NOM.EFF.	90.2								
PF	89	USABLE AT 208V				N/A			
RATING	40C AMB-S1 CONT				CC				
DE BRG	6307		ODE	6206					
ENCL	TEFC	SN							
VPWM INVERTER READY									
CT5-50(10:1)VT2.5-50(20:1									
BLANK	IE3-93.2(75%)93.7(50%)								

AC Induction Motor Performance Data

Record # 48453

Typical performance - not guaranteed values

Winding: 37WGR698-R001		Type: 3740M		Enclosure: TEFC	
Nameplate Data			400 V, 50 Hz: Single Voltage Motor		
Rated Output (HP)	10	Full Load Torque	18 LB-FT		
Volts	400	Start Configuration	direct on line		
Full Load Amps	13.1	Breakdown Torque	63.8 LB-FT		
R.P.M.	2900	Pull-up Torque	33.2 LB-FT		
Hz	50	Locked-rotor Torque	38.4 LB-FT		
NEMA Design Code	B	Starting Current	99.1 A		
Service Factor (S.F.)	1.15	No-load Current	4.38 A		
NEMA Nom. Eff.	90.2	Line-line Res. @ 25°C	0.662 Ω		
Rating - Duty	40C	Temp. Rise @ Rated Load	79°C		
S.F. Amps	AMB-CONT	Temp. Rise @ S.F. Load	97°C		
		Locked-rotor Power Factor	35.3		
		Rotor inertia	0.364 LB-FT ²		

Load Characteristics 400 V, 50 Hz, 10 HP

% of Rated Load	25	50	75	100	125	150	S.F.
Power Factor	54	76	86	89	90	91	90
Efficiency	91.4	93.7	93.2	92.5	90.9	89	91.5
Speed	2981	2957	2932	2905	2875	2840	2887
Line amperes	5.29	7.45	10	13.1	16.3	19.8	15

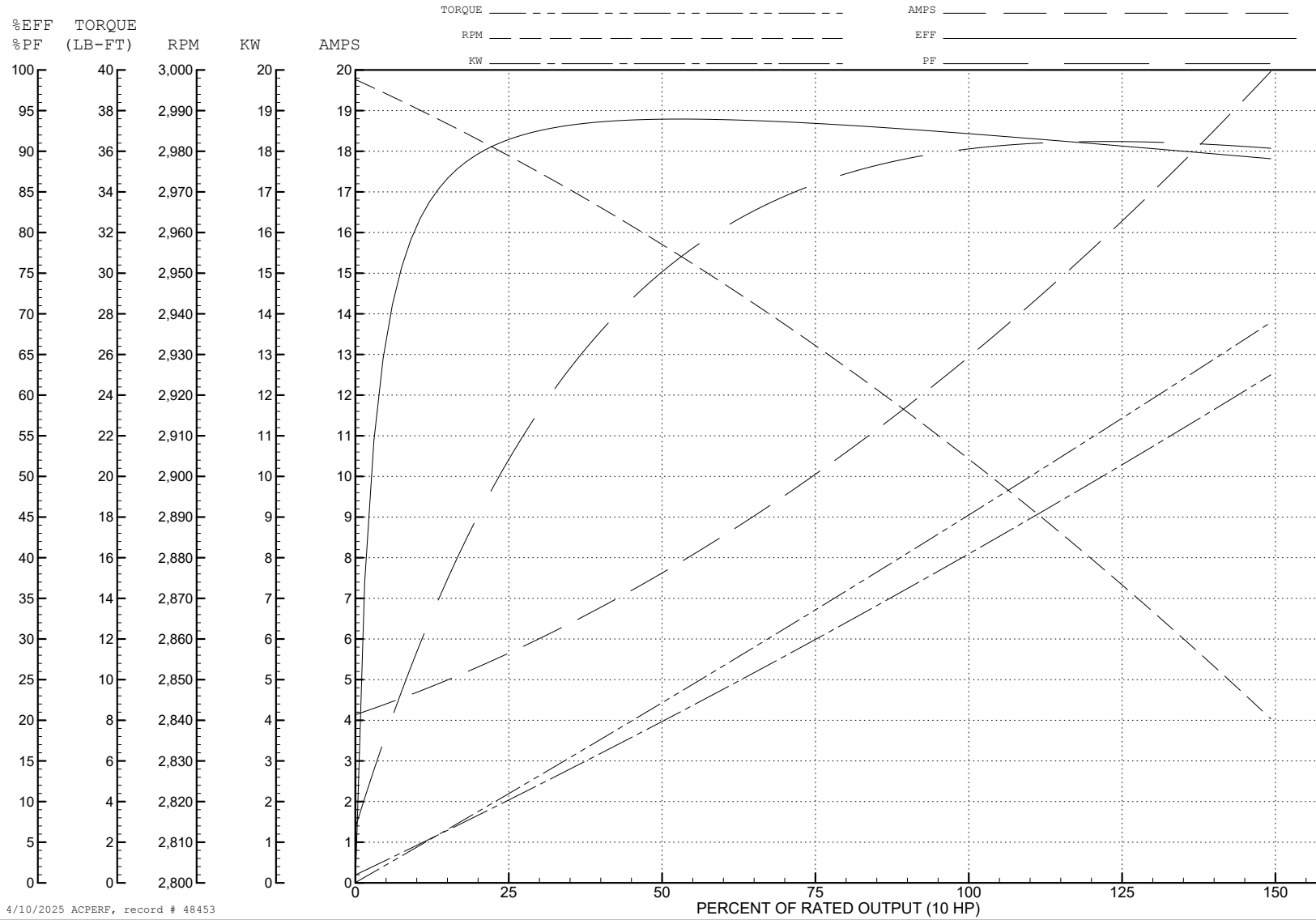
ABB Motors and Mechanical Inc.

WINDING # 37WGR698

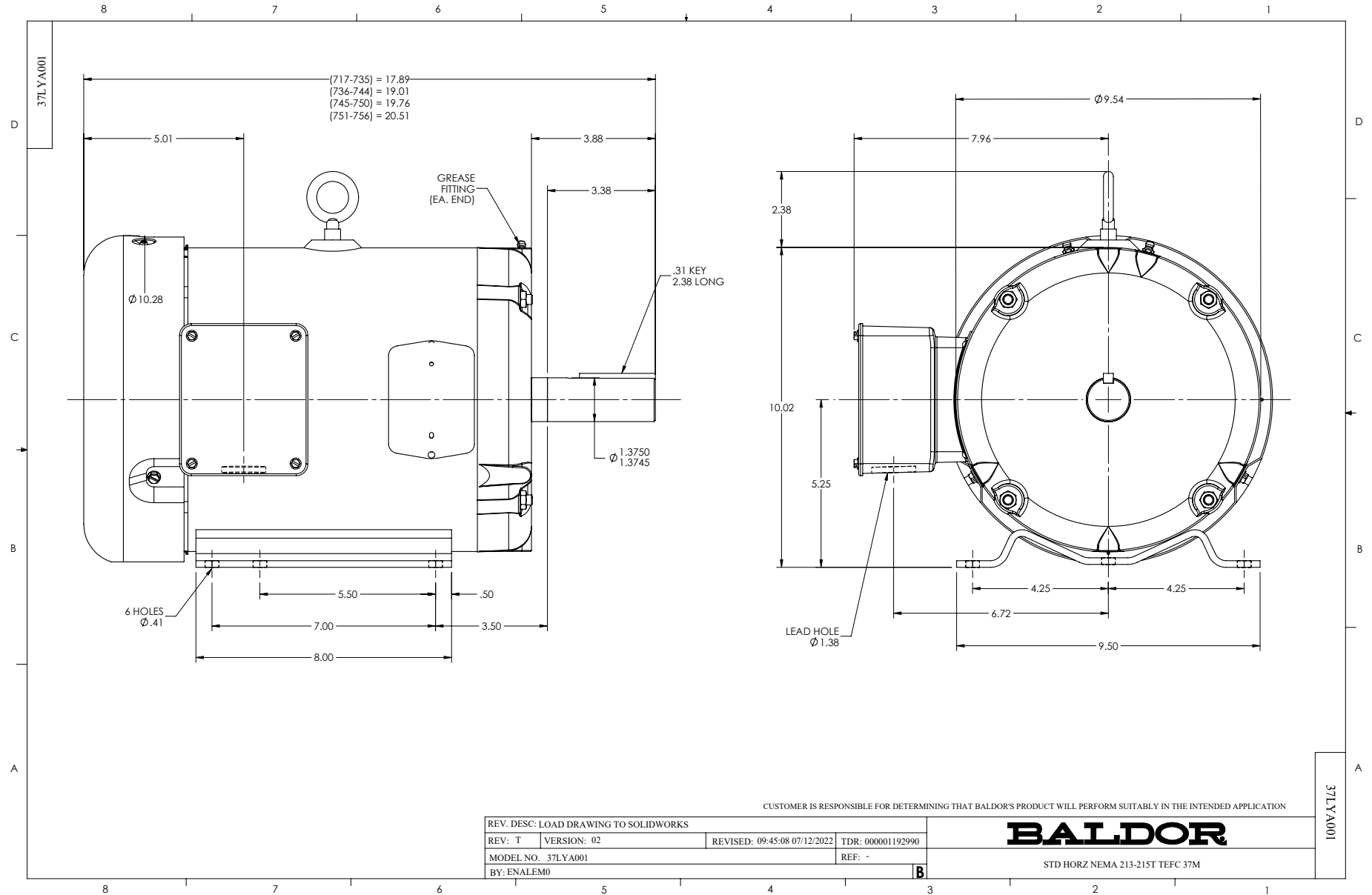
Typical performance - not guaranteed values.

10 HP 3 PH 50 HZ 2900 RPM 400 V 3740M

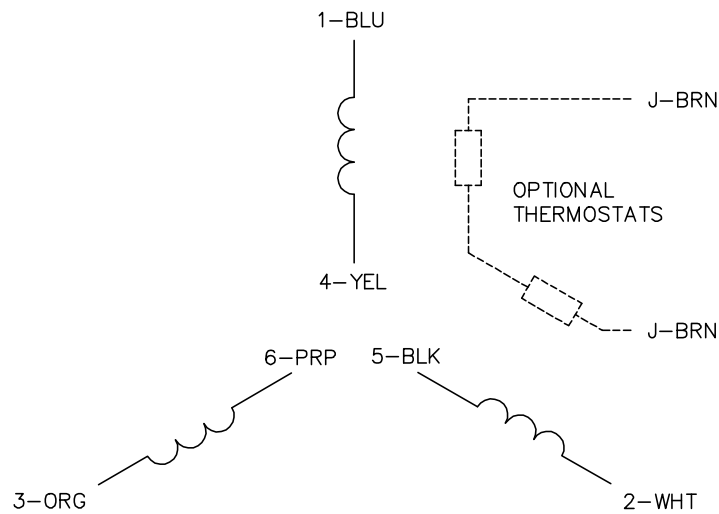
TORQUES (LB-FT): PO=63.8 PU=33.2 LR=38.4 LRA=99.1



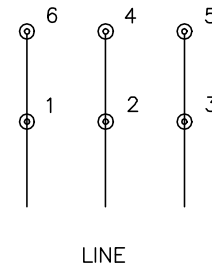
4/10/2025 ACPERF, record # 48453



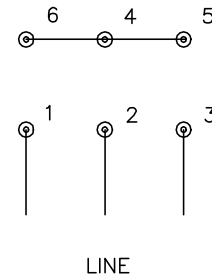
CD0382



RUN CONNECTION (1D)



START CONNECTION (1Y)



NOTES:

1. INTERCHANGE ANY TWO LINE LEADS TO REVERSE ROTATION.
2. OPTIONAL THERMOSTATS ARE PROVIDED WHEN SPECIFIED.
3. ACTUAL NUMBER OF INTERNAL PARALLEL CIRCUITS MAY BE A MULTIPLE OF THOSE SHOWN ABOVE.
4. LEAD COLORS ARE OPTIONAL. LEADS MUST ALWAYS BE NUMBERED AS SHOWN.
5. FOR ACROSS-THE-LINE STARTING, USE 'RUN' CONNECTION.

CD0382

REV. DESC: ADD CLASS CONN00000007		
REV. LTR: F	VERSION: 01	TDR: 000001099922
FILE: \AAA\00005\243	REVISED: 09:05:32 02/19/2019	BY: ENBRIRO
MTL: -	© □	

BALDOR - RELIANCE®

3PH, SV, 6 LEADS, Y START/D RUN

SH 1 of 1