



---

# Customer information packet

## EM4103T-8

25HP, 1775RPM, 3PH, 60HZ, 284T, 1054M, TEFC, F1

Class - None

Division - Not Applicable

## Specifications

Enclosure	TEFC
Frame	284T
Frame Material	Iron
Frequency	60.00 Hz
Haz Area Class and Group	None
Haz Area Division	Not Applicable
Motor Letter Type	Three Phase
Output @ Frequency	25.000 HP @ 60 HZ
Phase	3
Synchronous Speed @ Frequency	1800 RPM @ 60 HZ
Voltage @ Frequency	200.0 V @ 60 HZ
Agency Approvals	NEMA PREMIUM NEMA_PREMIUM UR CSA EEV
Ambient Temperature	40 °C
Auxillary Box	No Auxillary Box
Auxillary Box Lead Termination	None
Base Indicator	Rigid
Bearing Grease Type	Polyrex EM (-20F +300F)
Blower	None
Current @ Voltage	71.000 A @ 200.0 V 72.000 A @ 208.0 V
Design Code	A
Drip Cover	No Drip Cover
Duty Rating	CONT
Efficiency @ 100% Load	93.6 %
Electrically Isolated Bearing	Not Electrically Isolated
Feedback Device	NO FEEDBACK
Front Face Code	Standard
Front Shaft Indicator	None
Heater Indicator	No Heater

## Part detail

Revision	J
Type	AC
Mech. spec.	10C151
Base	
Status	PRD/A
Elec. spec.	10WGZ695
Layout	10LYC151
Eff. date	06-27-2024
CD Diagram	CD0695
Poles	04
Leads	6#6
Proprietary	False
Created date	10-19-2017

High Voltage Full Load Amps	71.0 a
Insulation Class	F
Inverter Code	Inverter Ready
KVA Code	J
Lifting Lugs	Standard Lifting Lugs
Locked Bearing Indicator	Locked Bearing
Motor Lead Exit	Ko Box
Motor Lead Quantity/Wire Size	6 @ 6 AWG
Motor Lead Termination	Flying Leads
Motor Standards	NEMA
Motor Type	1054M
Mounting Arrangement	F1
Number of Poles	4
Overall Length	27.76 IN
Power Factor	81
Product Family	General Purpose
Pulley End Bearing Type	Ball
Pulley Face Code	Standard
Pulley Shaft Indicator	Standard
Rodent Screen	None
Service Factor	1.15
Shaft Diameter	1.875 IN
Shaft Extension Location	Pulley End
Shaft Ground Indicator	No Shaft Grounding
Shaft Rotation	Reversible
Shaft Slinger Indicator	Shaft Slinger
Speed	1775 rpm
Speed Code	Single Speed
Starting Method	Part Winding
Thermal Device - Bearing	None
Thermal Device - Winding	None
Vibration Sensor Indicator	No Vibration Sensor
Winding Thermal 1	None
Winding Thermal 2	None

**Nameplate**

**NP3443L**

<b>CAT.NO.</b>	EM4103T-8	<b>CUST. P/N</b>				<b>ENCL</b>	<b>TEFC</b>
<b>SPEC.</b>	10C151Z695G1	<b>CC</b>	010A	<b>FRAME</b>	284T	<b>SER.NO.</b>	
<b>HP</b>	25	<b>CLASS</b>		F	<b>HZ</b>	60	
<b>R.P.M.</b>	1775	<b>PH</b>	3	<b>DES</b>	A		
<b>VOLTS</b>	200	<b>CODE</b>		J	<b>ODE BRG</b>	6309	<b>DE BRG</b> 6311
<b>AMPS</b>	71						
<b>RATING</b>	40C AMB-CONT	<b>NEMA NOM. EFF.</b>			93.6	<b>GREASE</b>	POLYREX EM
<b>P.F.</b>	81	<b>SER.F.</b>	1.15	<b>VPWM INVERTER READY</b>			
<b>HTR-VOLTS</b>		<b>HTR-AMPS</b>		<b>HTR-WATTS</b>			

**Accessories**

<b>Part number</b>	<b>Description</b>	<b>Multiplier</b>
10-1305	C FACE KIT	A8
10EP1502A01SP	D-FLANGE KIT	A8

**AC Induction Motor Performance Data**

Record # 67437

Typical performance - not guaranteed values

<b>Winding: 10WGZ695-R001</b>		<b>Type: 1054M</b>		<b>Enclosure: TEFC</b>	
<b>Nameplate Data</b>			<b>200 V, 60 Hz: Single Voltage Motor</b>		
<b>Rated Output (HP)</b>	25	<b>Full Load Torque</b>	74 LB-FT		
<b>Volts</b>	200	<b>Start Configuration</b>	direct on line		
<b>Full Load Amps</b>	71	<b>Breakdown Torque</b>	267 LB-FT		
<b>R.P.M.</b>	1775	<b>Pull-up Torque</b>	121 LB-FT		
<b>Hz</b>	60	<b>Locked-rotor Torque</b>	145 LB-FT		
<b>NEMA Design Code</b>	A	<b>Starting Current</b>	523 A		
<b>Service Factor (S.F.)</b>	1.15	<b>No-load Current</b>	32.29 A		
<b>NEMA Nom. Eff.</b>	93.6	<b>Line-line Res. @ 25°C</b>	0.0425 Ω		
<b>Rating - Duty</b>	40C	<b>Temp. Rise @ Rated Load</b>	51°C		
<b>S.F. Amps</b>	AMB-CONT	<b>Temp. Rise @ S.F. Load</b>	61°C		
		<b>Locked-rotor Power Factor</b>	30.6		
		<b>Rotor inertia</b>	4.31 LB-FT <sup>2</sup>		

**Load Characteristics 200 V, 60 Hz, 25 HP**

<b>% of Rated Load</b>	<b>25</b>	<b>50</b>	<b>75</b>	<b>100</b>	<b>125</b>	<b>150</b>	<b>S.F.</b>
<b>Power Factor</b>	42	65	75	81	83	84	82
<b>Efficiency</b>	88.2	92.8	93.9	94	93.7	93.4	93.8
<b>Speed</b>	1794	1790	1784	1778	1771	1764	1774
<b>Line amperes</b>	36.11	45.2	57.31	70.94	85.99	103	80

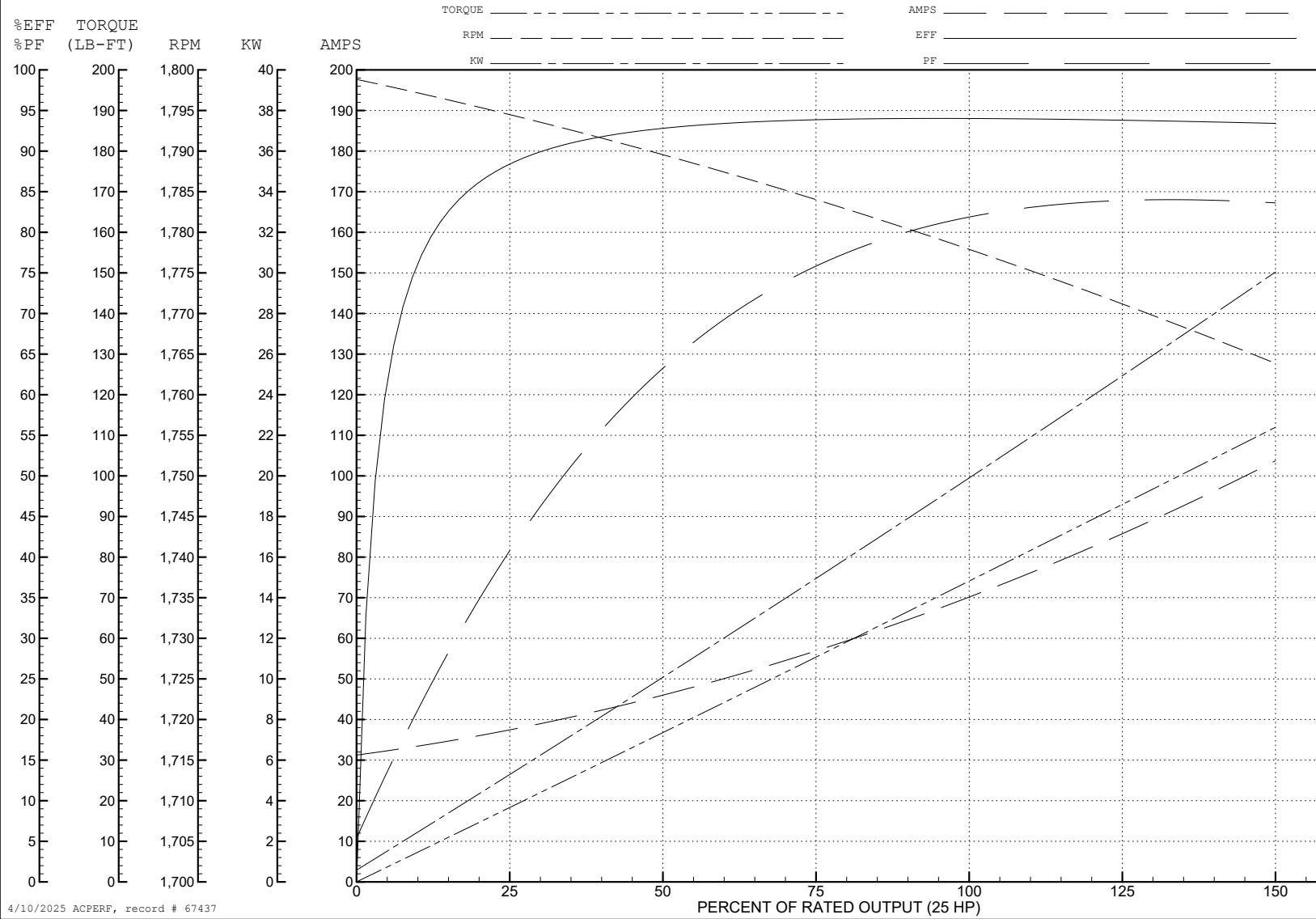
ABB Motors and Mechanical Inc.

WINDING # 10WGZ695

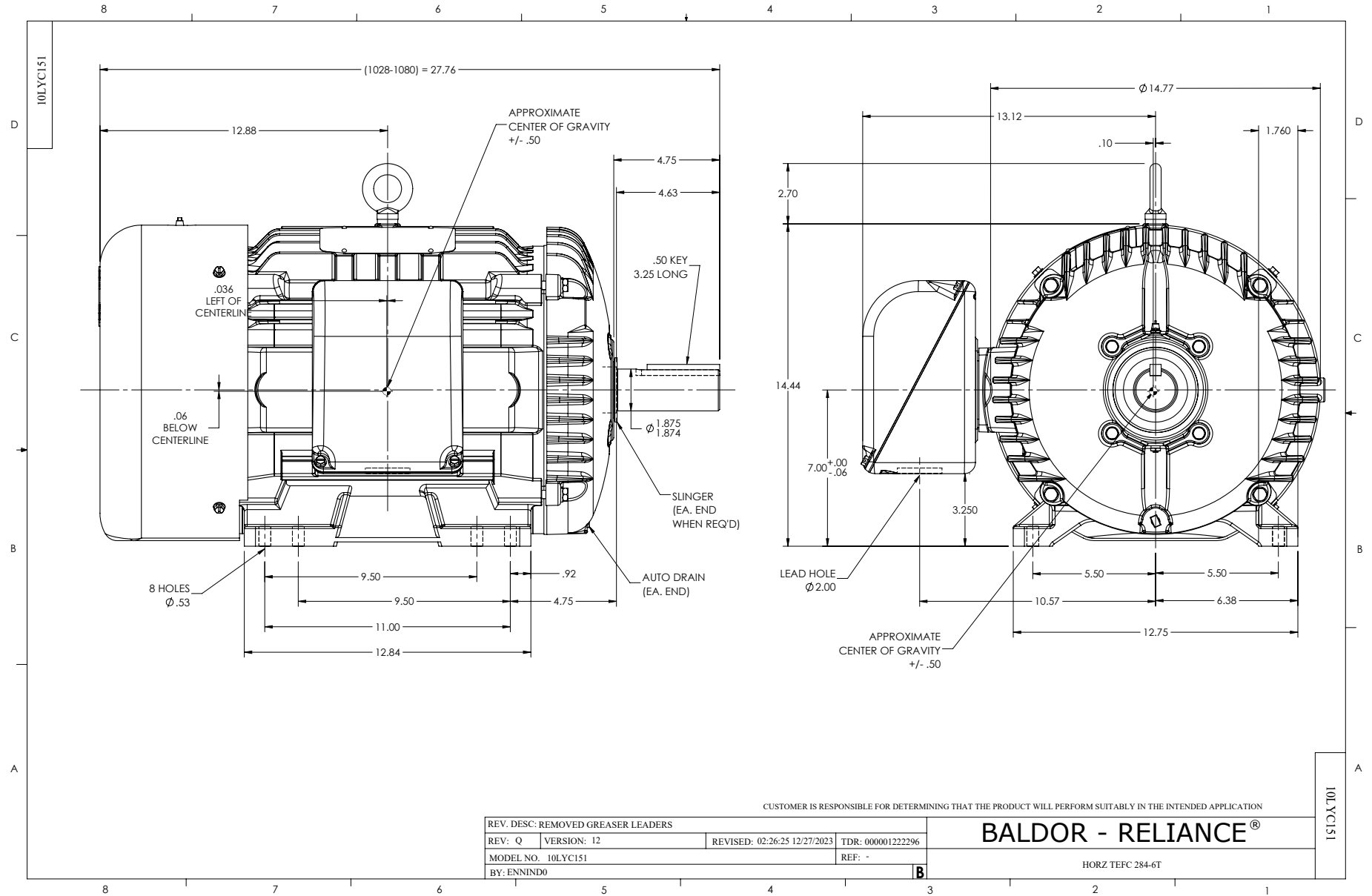
Typical performance - not guaranteed values.

25 HP 3 PH 60 HZ 1775 RPM 200 V 1054M

TORQUES (LB-FT): PO=267 PU=121 LR=145 LRA=523



4/10/2025 ACPERF, record # 67437



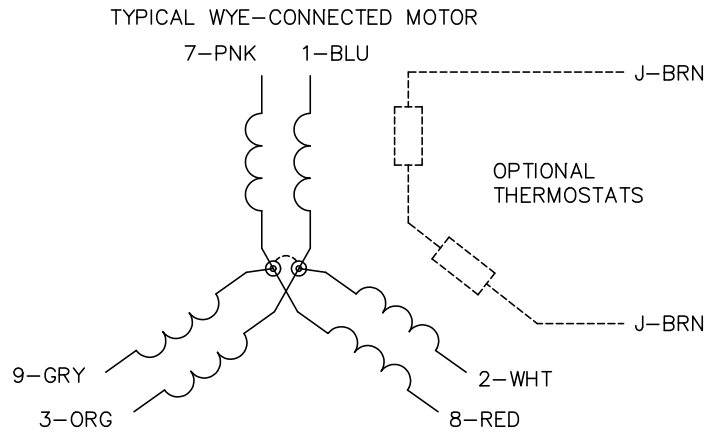
CUSTOMER IS RESPONSIBLE FOR DETERMINING THAT THE PRODUCT WILL PERFORM SUITABLY IN THE INTENDED APPLICATION

REV. DESC: REMOVED GREASER LEADERS	VERSION: 12	REVISED: 02:26:25 12/27/2023	TDR: 000001222296
MODEL NO. 10LYC151	BY: ENNIND0	REF: -	

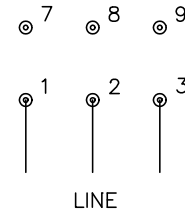
**BALDOR - RELIANCE**®

HORZ TEFC 284-6T

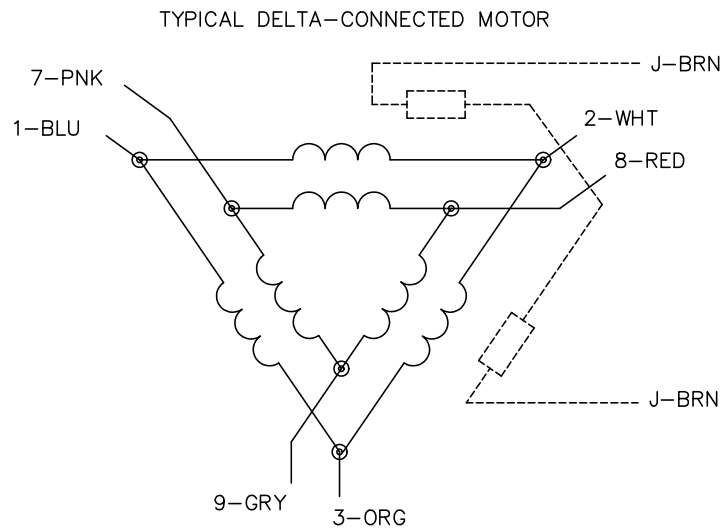
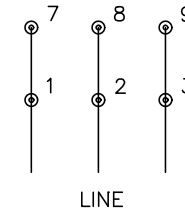
CD0695



START CONNECTION



RUN CONNECTION



NOTES:

1. MOTOR MAY BE WYE CONNECTED OR DELTA CONNECTED.
2. INTERCHANGE ANY TWO LINE LEADS TO REVERSE ROTATION.
3. OPTIONAL THERMOSTATS ARE PROVIDED WHEN SPECIFIED.
4. ACTUAL NUMBER OF INTERNAL PARALLEL CIRCUITS MAY VARY.
5. LEAD COLORS ARE OPTIONAL. LEADS MUST ALWAYS BE NUMBERED AS SHOWN.

CD0695

REV. DESC: REVISE TO SHOW OPTIONAL COLORS			
REV. LTR: C	BY: JLP	REVISED: 01/21/99 3:19	TDR: 0171435
S69000		FILE: AAA00005151	MDL: -
		MTL: -	

BALDOR ELECTRIC Co.

3PH, SV, 6 LEADS, PART WINDING START