

DUTY MASTER ALTERNATING CURRENT MOTORS

SQUIRREL-CAGE INDUCTION

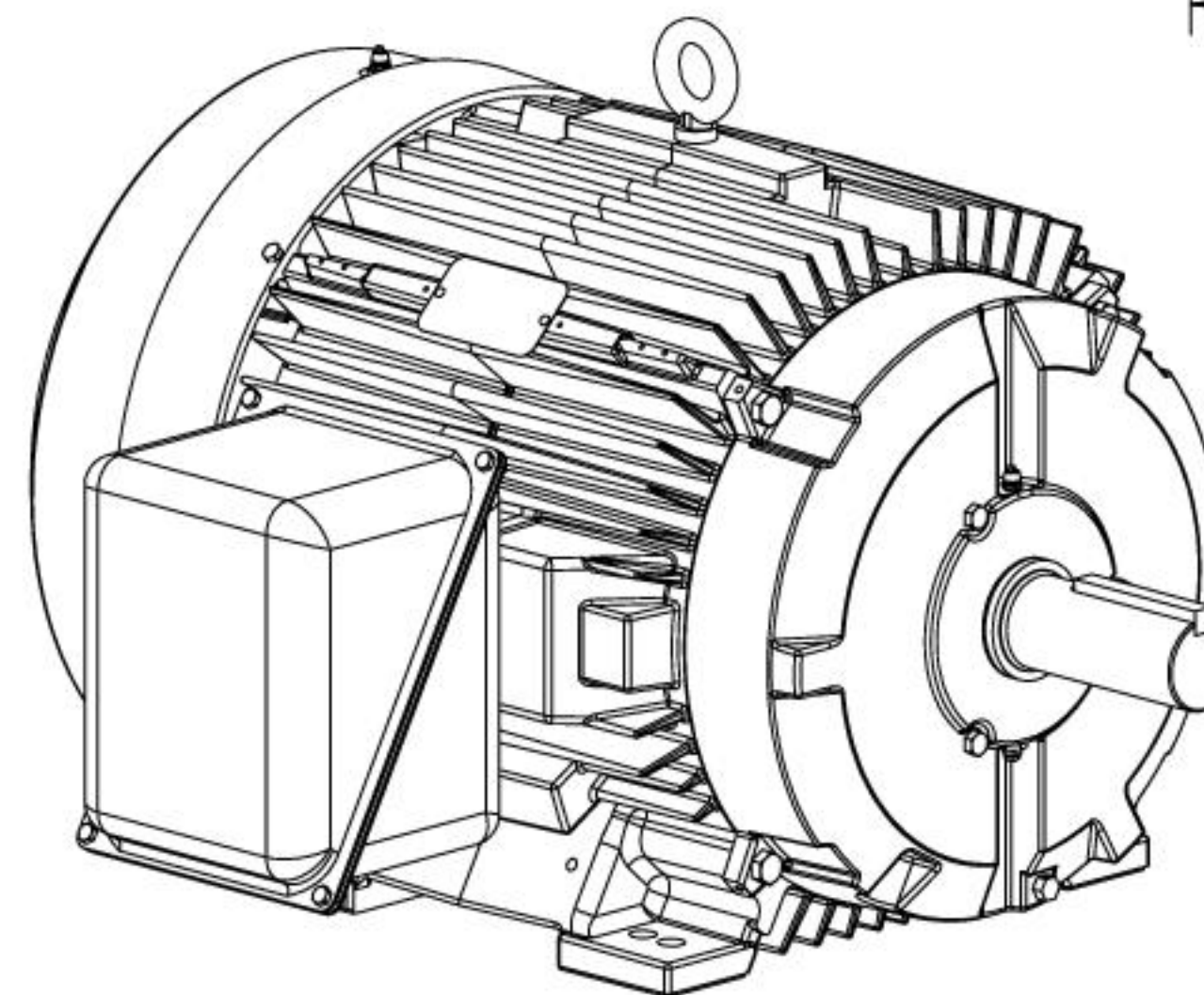
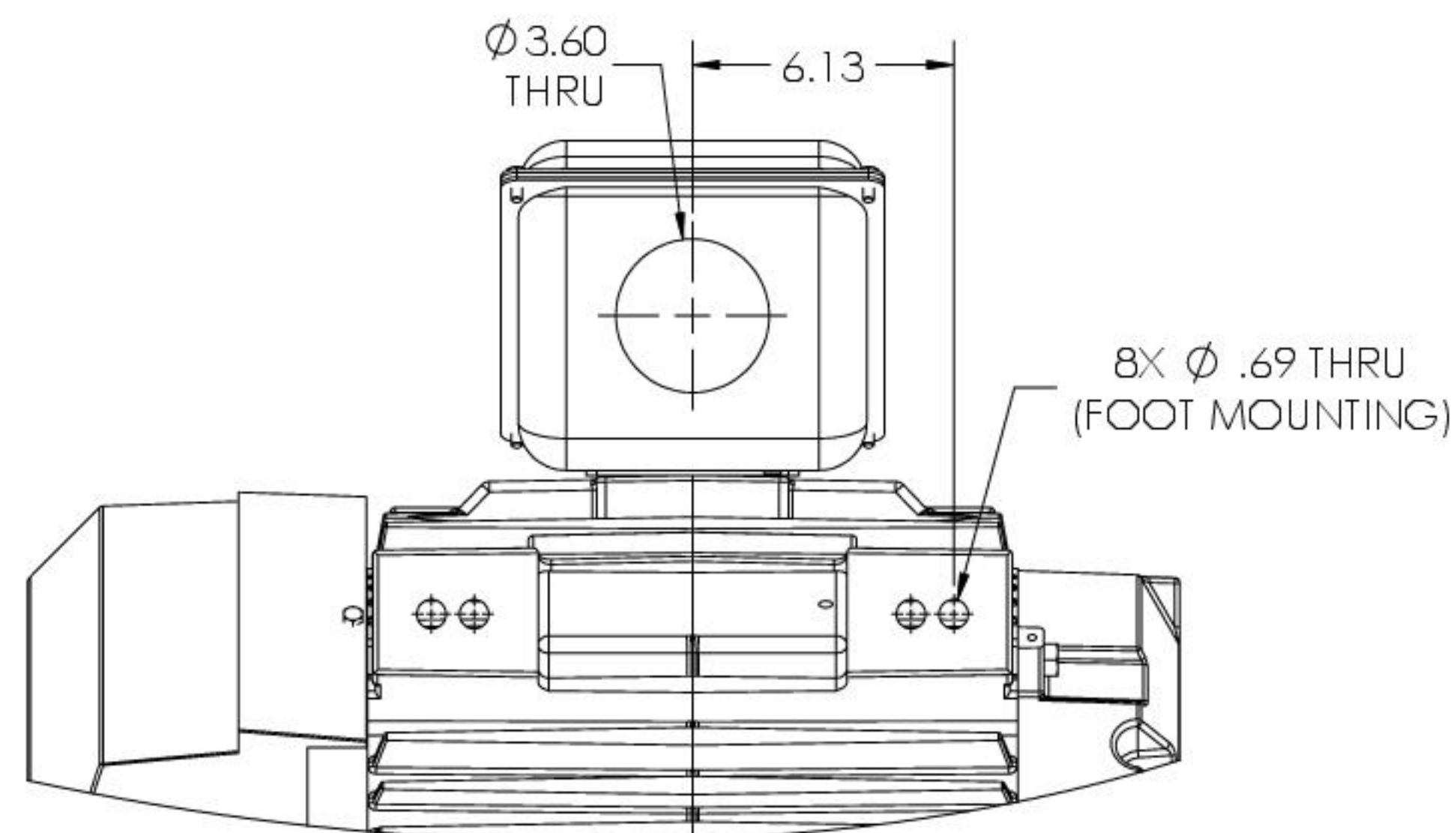
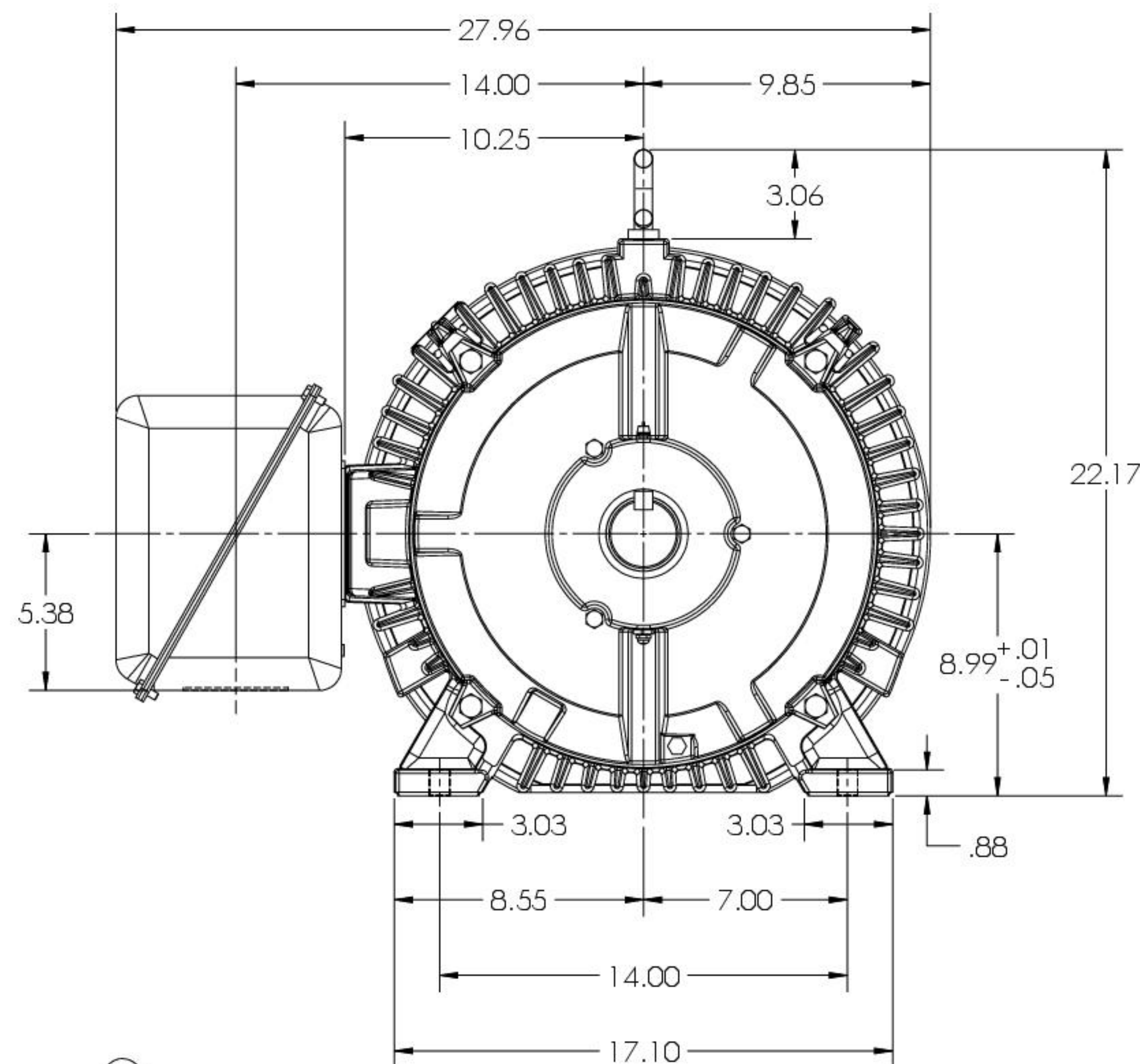
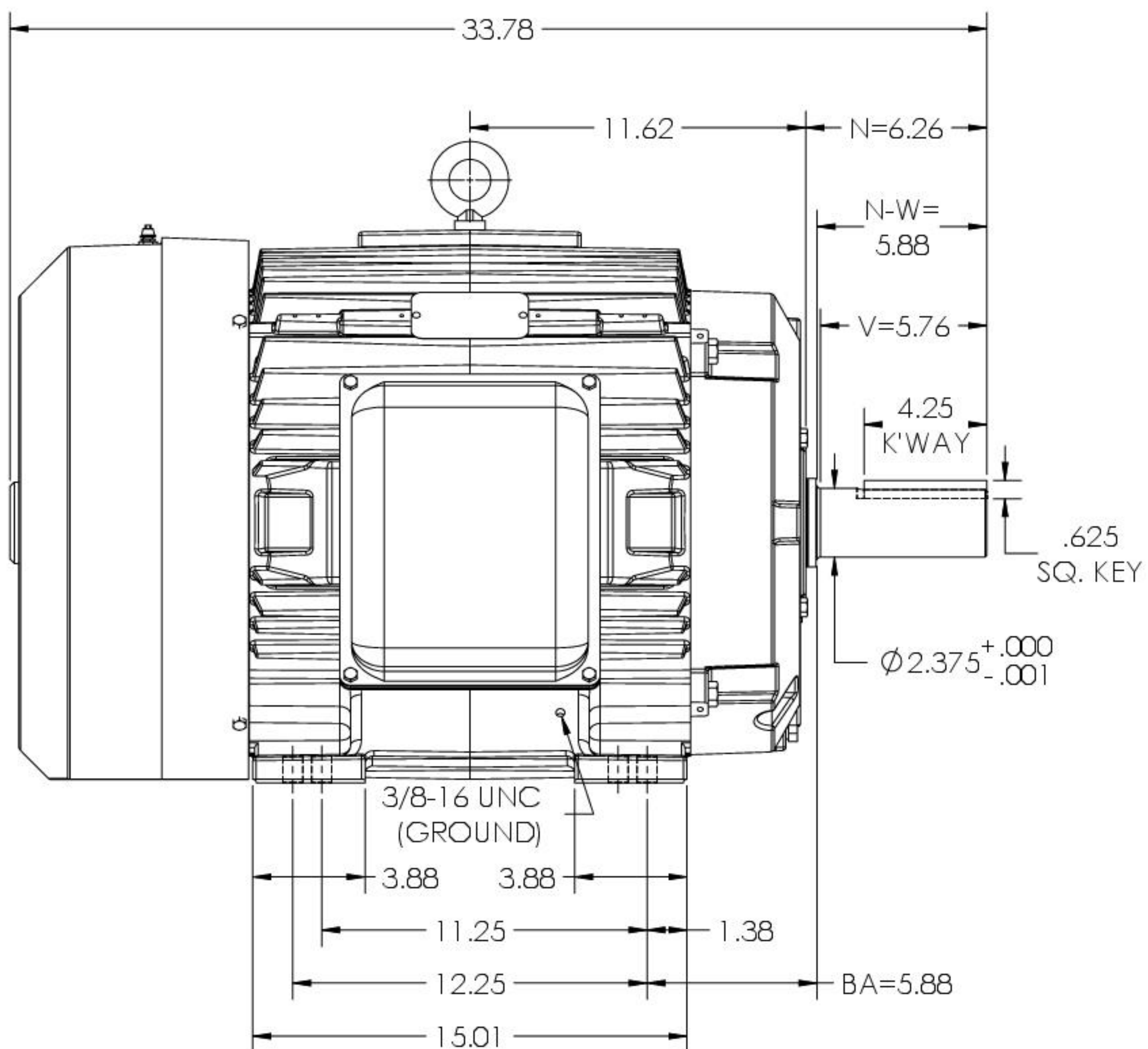
ENCLOSURE: TOTALLY ENCLOSED

MOUNTING: FOOT, F-1 SIDE

E365T/E364T FRAME MOUNTING

COOLING: FAN COOLED

STEEL CONDUIT BOX



DIMENSIONS ARE IN INCHES.
 WEIGHT (LBS.) 800, MOTOR WEIGHT MAY VARY 15% DEPENDING ON RATING.
 CUSTOMER IS RESPONSIBLE FOR DETERMINING THAT MOTOR PERFORMANCE IS SUITABLE IN THE APPLICATION.

REV.	DESC.	UPDATE	DS	QUALITY
REV: F	VERSION: 06	REVISED: 01/00/49	01/02/2024	TDR: 000001222947
MODEL NO. 617431-412				
BY: USJEDIL				

BALDOR

E365/E364T TEFC FOOT FL/STEEL CONDUIT BOX