

BALDOR® • RELIANCE 

Product Information Packet

EM4348T

40HP,890RPM,3PH,60HZ,365T,TEFC,F1

Part Detail							
Revision:	B	Status:	PRD/A	Change #:		Proprietary:	No
Type:	AC	Elec. Spec:	A36WG1044	CD Diagram:	416820-002	Mfg Plant:	
Mech. Spec:		Layout:	617428-077	Poles:	08	Created Date:	11-23-2015
Base:		Eff. Date:	03-01-2017	Leads:	3#6,6#8		

Specs			
Catalog Number:	EM4348T	Heater Indicator:	No Heater
Enclosure:	TEFC	Insulation Class:	F
Frame:	365T	Inverter Code:	Inverter Ready
Frame Material:	Iron	IP Rating:	NONE
Output @ Frequency:	40.000 HP @ 60 HZ	KVA Code:	G
Synchronous Speed @ Frequency:	900 RPM @ 60 HZ	Lifting Lugs:	Standard Lifting Lugs
Voltage @ Frequency:	230.0 V @ 60 HZ	Motor Lead Quantity/Wire Size:	3 @ 6 AWG
	460.0 V @ 60 HZ	Motor Type:	A36062M
XP Class and Group:	None	Mounting Arrangement:	F1
XP Division:	Not Applicable	Power Factor:	77
Agency Approvals:	CCSA US	Product Family:	General Industrial
	CSA EEV	Pulley End Bearing Type:	Ball
Auxillary Box:	No Auxillary Box	Pulley Face Code:	Standard
Base Indicator:	Rigid	Shaft Ground Indicator:	No Shaft Grounding
Bearing Grease Type:	Polyrex EM (-20F +300F)	Shaft Rotation:	Reversible
Current @ Voltage:	104.000 A @ 230.0 V	Shaft Slinger Indicator:	No Slinger
	52.000 A @ 460.0 V	Speed Code:	Single Speed
Design Code:	B	Motor Standards:	NEMA

Drip Cover:	No Drip Cover	Starting Method:	Direct on line
Duty Rating:	CONT	Thermal Device - Bearing:	NONE (OLD)
Feedback Device:	NO FEEDBACK	Thermal Device - Winding:	None

Nameplate NP2496L

MOBIL POLYREX EM

Nameplate NP2349L										
SPEC NO.	A36-7200-1044			CAT.NO.	EM4348T			FRAME	365T	
HP	40	VOLTS	230/460		PHASE	3	DESIGN	B	TYPE	P
RPM	890	AMPS	104/52		HZ	60	AMB	40	SF	1.15
DRIVE END BEARING	65BC03J30X			DUTY	CONT		INSUL.CLASS	F		
OPP D.E. BEARING	65BC03J30X			ENCL	TEFC		CODE	G		
SER.NO.				POWER FACTOR	77		NEMA-NOM-EFFICIENCY	93		
							MAX CORR KVAR	15	GUARANTEED EFFICIENCY	91.7
							NEMA NOM/CSA QUOTED EFF			
	USABLE AT 208V AT 110 AMPS						MOTOR WEIGHT	875		

Parts List		
Part Number	Description	Quantity
SA310819	SA A36-7200-1044	1.000 EA
RA298217	RA A36-7200-1044	1.000 EA
421948032	LABEL, MYLAR	1.000 EA
NP2496L	MOTOR LUBE NAMEPLATE	1.000 EA
000613006PU	N/P (RELEASE QTY 10,000) UL CSA LABEL	1.000 EA
000692000VD	LABEL WARNING	1.000 EA
NP2349L	SUPER-E ,SS, CSA, CSA SUPER-E	1.000 EA
085922073B	BRKT 360 085922072WCC KB	1.000 EA
415072001B	CLAMP	1.000 EA
078559001A	+FANCV - 360	1.000 EA
034180012DA	KEY 1X4X1/4X1-1/2 L	1.000 EA
078557001F	FAN KB 110/50 (60) 360	1.000 EA
004824015A	GREASE POLYREX EM	0.540 LB
032018012DK	HHCS 1/2-13X1-1/2 PLTD.	4.000 EA
032018008AK	HHCS 1/4-20X1 PLATED	4.000 EA
032018024CK	HHCS 3/8-16X3 PLTD.	3.000 EA
415096002A	CPLG 1/8 HEX TYPE	1.000 EA
410700004F	WSHR	1.000 EA
035000001G	GREASE RELIEF FITTING, ALEMITE 317400	1.000 EA
035000001G	GREASE RELIEF FITTING, ALEMITE 317400	1.000 EA
034530052AB	P/NIP 1/8X6-1/2 GALV.	1.000 EA
034690001AB	1/8" NPT SQHDPLG	1.000 EA
034600001AA	BUSH 1/4TO1/8 BLACK	1.000 EA
034690001AB	1/8" NPT SQHDPLG	1.000 EA

Parts List (continued)		
Part Number	Description	Quantity
034600001AA	BUSH 1/4TO1/8 BLACK	1.000 EA
085922073B	BRKT 360 085922072WCC KB	1.000 EA
032018012DK	HHCS 1/2-13X1-1/2 PLTD.	4.000 EA
032018024CK	HHCS 3/8-16X3 PLTD.	3.000 EA
077176000L	C/BOX, 360-400	1.000 EA
077176001A	CBOXC, PAINTED 360-400	1.000 EA
043292000AJ	GASK 320-400	1.000 EA
402731001A	GASK 360-440	1.000 EA
418150003A	GREASE FITTING CAP	1.000 EA
MG1025Y17	WILKOFAS, 789.701, SUPER E PEARL GOLD	0.250 GA
032018005AK	HHCS 1/4-20X5/8 PLATED	4.000 EA
032018008CK	HHCS 3/8-16X1L PLATED	4.000 EA
035000001A	ALFTG 1/8" 1610-BL	1.000 EA
415000103D	T/LUG #4AWG-1/0AWG W/HOLE FOR .250 BOLT	1.000 EA
406099000A	PLUG - FAN COVER 320-440	1.000 EA
033512004LB	HHTTS 1/4-20X1/2 PLTD.	1.000 EA
035000001A	ALFTG 1/8" 1610-BL	1.000 EA
418150003A	GREASE FITTING CAP	1.000 EA
033775004EA	DRSCR #6-1/4 304 S.S.	2.000 EA
034180034HA	KEY 5/8X5/8X4-1/4 L	1.000 EA
14PA1000	PACKAGING 314 GROUP COMBINED PRINT	1.000 EA
HW1000A32	5/16 FL WASHER WIDE, ID=.344, OD=1.125	3.000 EA
032509020C	CARRIAGE BOLT - 360	3.000 EA

REL. S.O.	FRAME	HP	TYPE	PHASE/HERTZ	RPM	VOLTS
	365T	40	P	3/60	890	230/460
AMPS	DUTY	AMB °C/ INSUL.	S.F.	NEMA DESIGN	CODE LETTER	ENCL.
104/52	CONT	40/F	1.15	B	G	FCXE
E/S	ROTOR	TEST S.O.	TEST DATE	STATOR RES. @25 °C (OHMS (BETWEEN LINES))		
492342	418141073EE	---	---	.0486/.194		

PERFORMANCE

LOAD	HP	AMPERES	RPM	POWER FACTOR %	EFFICIENCY %
NO LOAD	0	25.7	900	3.85	0
1/4	10.0	28.1	897	37.3	89.5
2/4	20.0	33.9	895	59.5	93.0
3/4	30.0	42.2	892	71.2	93.4
4/4	40.0	52.0	889	77.4	93.0
5/4	50.0	63.3	885	80.2	92.2

SPEED TORQUE

	RPM	TORQUE % FULL LOAD	TORQUE LB.-FT.	AMPERES
LOCKED ROTOR	0	140	330	282
PULL UP	225	123	290	265
BREAKDOWN	845	224	530	157
FULL LOAD	889	100	236	52.0

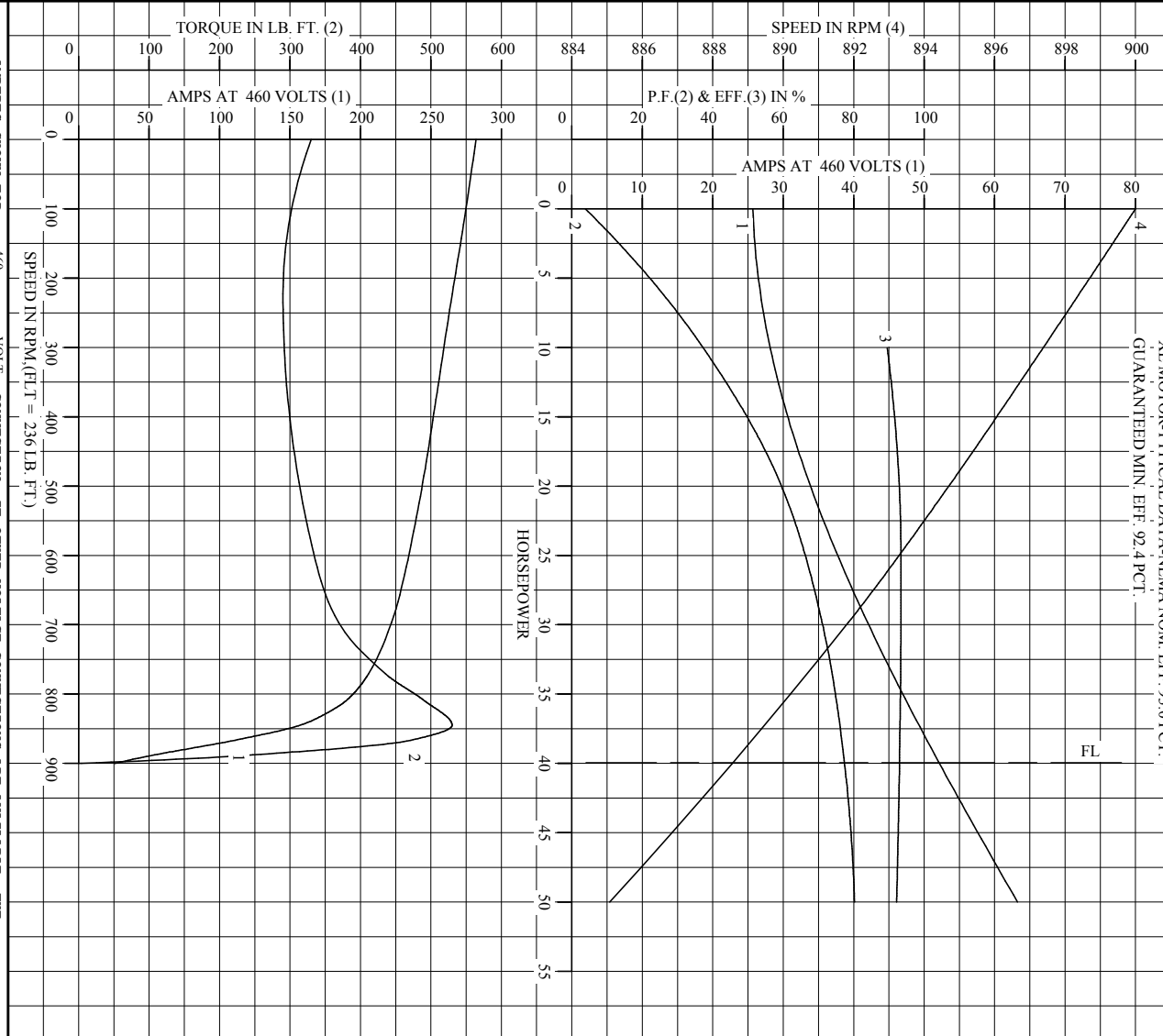
AMPERES SHOWN FOR 460. VOLT CONNECTION. IF OTHER VOLTAGE CONNECTIONS ARE AVAILABLE, THE AMPERES WILL VARY INVERSELY WITH THE RATED VOLTAGE

REMARKS: XE MOTOR-TYPICAL DATA-NEMA NOM. EFF. 93.0 PCT.
GUARANTEED MIN. EFF. 92.4 PCT.

BALDOR	DR. BY	M.C. BENTON	A-C MOTOR	
	CK. BY	K.W. KANOUFF		PERFORMANCE DATA
	APP. BY	K.W. KANOUFF		
DATE	03/09/93	ISSUE DATE	03/09/93	

REL. S.O. _____ RPM 890 S.F. 1.15 ROTOR 418141073EE
 FRAME 365T VOLTS 230/460 NEMA DESIGN B TEST S.O. ---
 HP 40 AMPS 104/52 CODE LETTER G TEST DATE ---
 TYPE P DUTY CONT ENCLOSURE FCXE STATOR RES. @ 25 °C .0486/.194
 PHASE/HERTZ 3/60 AMB °C/INSUL 40/F E/S 492342 OHMS (BETWEEN LINES)

XE MOTOR-TYPICAL DATA-NEMA NOM. EFF. 93.0 PCT.
 GUARANTEED MIN. EFF. 92.4 PCT.



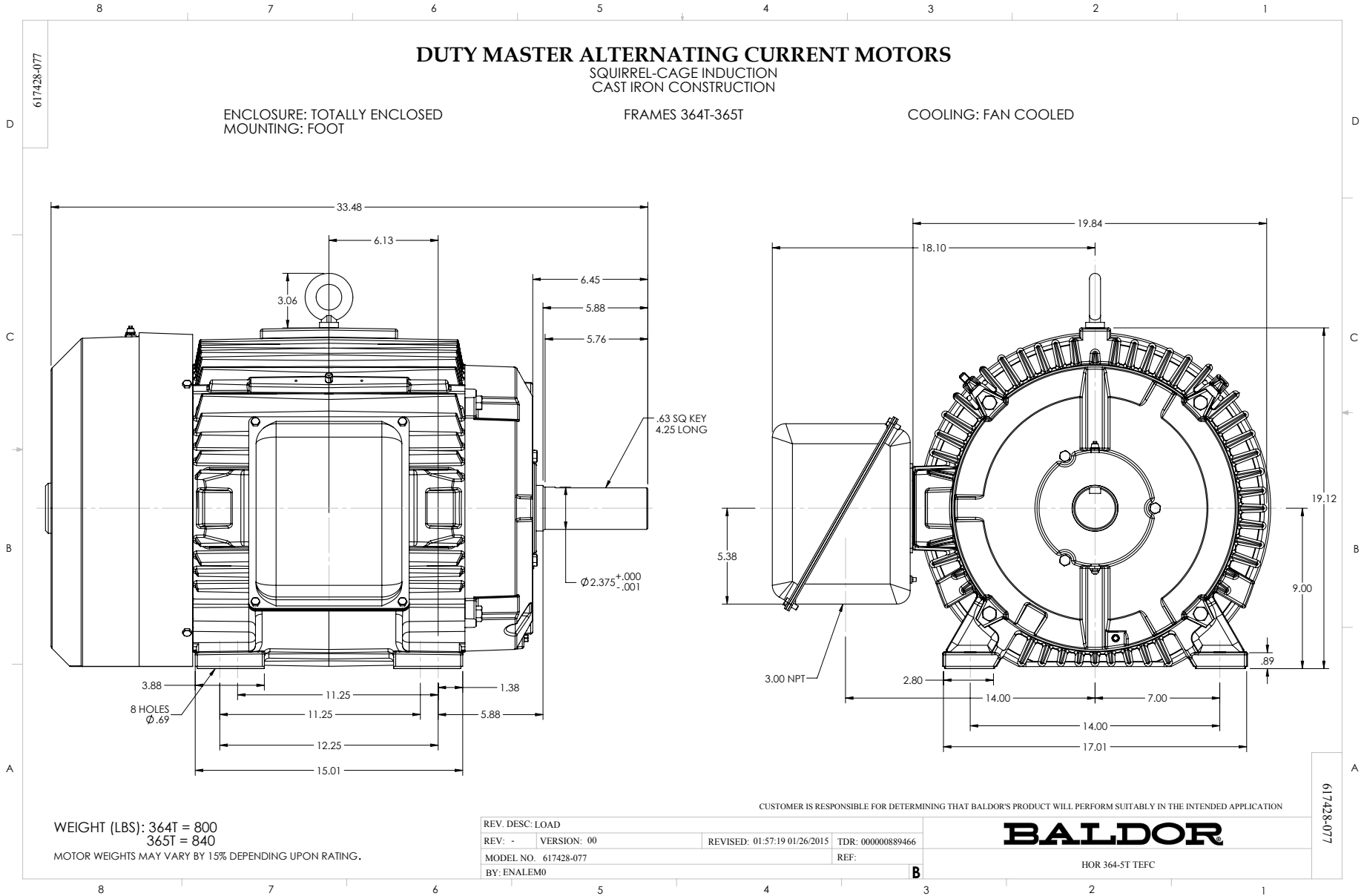
AMPERES SHOWN FOR 460 VOLT CONNECTION, IF OTHER VOLTAGE CONNECTIONS ARE AVAILABLE, THE AMPERES WILL VARY INVERSELY WITH THE RATED VOLTAGE.

BALDOR

DR. BY MC. BENTON
 CK. BY K.W. KANOUFF
 APP. BY K.W. KANOUFF
 DATE 03/09/93

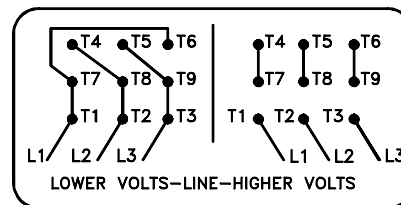
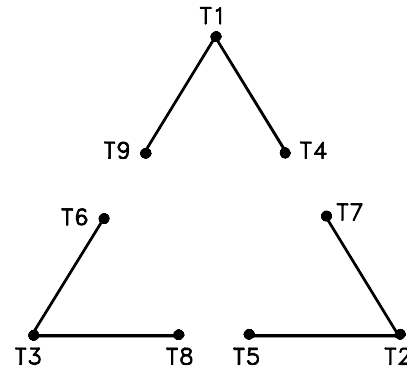
A-C MOTOR PERFORMANCE CURVES A36WG1044-R001
 ISSUE DATE 03/09/93

Printed on 2/2/11 19:36 @ usmghengdev1



416820-002

A-C MOTOR
 CONNECTION DIAGRAM
 STANDARD 9 LEAD DELTA-CONNECTED



(N.P. 1575-B)

416820-002

REV. DESC: LOADED TO BUS, C/R 335225		
REV. LTR: -	VERSION: 00	TDR: 000000538207
FILE: \MGA\00000\661	REVISED: 10: 47: 51 04/30/2010	
MTL: -	BY: RAGRA	

BALDOR

CONN DIAG - STANDARD 9 LEAD, DELTA-CONNECTED

SH 1 of 1

Marketing maintained PDF of MN408:

<http://www.baldor.com/support/Literature/Load.ashx/MN408?ManNumber=MN408>

Marketing maintained PDF of MN416:

<http://www.baldor.com/support/Literature/Load.ashx/MN416?ManNumber=MN416>