

BALDOR • RELIANCE

Customer information packet

EMVM3613D

3.7KW, 3450RPM, 3PH, 60HZ, D100LD, 3634M, TEFC

Class - None

Division - Not Applicable

Specifications

Enclosure	TEFC
Frame	D100LD
Frame Material	Steel
Frequency	60.00 Hz
Haz Area Class and Group	None
Haz Area Division	Not Applicable
Motor Letter Type	Three Phase
Output @ Frequency	3.700 KW @ 60 HZ
Phase	3
Synchronous Speed @ Frequency	3600 RPM @ 60 HZ
Voltage @ Frequency	230.0 V @ 60 HZ 460.0 V @ 60 HZ
Agency Approvals	CE CSA EEV NEMA PREMIUM WEEE
Ambient Temperature	40 °C
Auxillary Box	No Auxillary Box
Auxillary Box Lead Termination	None
Base Indicator	No Mounting
Bearing Grease Type	Polyrex EM (-20F +300F)
Blower	None
Current @ Voltage	5.600 A @ 460.0 V 12.400 A @ 208.0 V 11.200 A @ 230.0 V
Design Code	B
Drip Cover	No Drip Cover
Duty Rating	CONT
Efficiency @ 100% Load	88.5 %
Electrically Isolated Bearing	Not Electrically Isolated
Feedback Device	NO FEEDBACK
Frame Prefix	D

Part detail

Revision	K
Type	AC
Mech. spec.	36H938
Base	
Status	PRD/A
Elec. spec.	36WGT202
Layout	36LYH938
Eff. date	05-01-2024
CD Diagram	CD0005
Poles	02
Leads	9#16
Proprietary	False
Created date	05-08-2015

Front Face Code	Standard
Front Shaft Indicator	None
Heater Indicator	No Heater
High Voltage Full Load Amps	5.6 a
Insulation Class	F
Inverter Code	Inverter Ready
KVA Code	G
Lifting Lugs	No Lifting Lugs
Locked Bearing Indicator	Locked Bearing
Motor Lead Exit	Ko Box
Motor Lead Quantity/Wire Size	9 @ 16 AWG
Motor Lead Termination	Flying Leads
Motor Standards	IEC
Motor Type	3634M
Mounting Arrangement	B5
Number of Poles	2
Overall Length	15.77 IN
Power Factor	93
Product Family	General Purpose
Pulley End Bearing Type	Ball
Pulley Face Code	D-Flange
Pulley Shaft Indicator	Tapped & Key
Rodent Screen	None
Service Factor	1.15
Shaft Diameter	1.103 IN
Shaft Extension Location	Pulley End
Shaft Ground Indicator	No Shaft Grounding
Shaft Rotation	Reversible
Shaft Slinger Indicator	No Slinger
Speed	3450 rpm
Speed Code	Single Speed
Starting Method	Direct on line
Thermal Device - Bearing	None
Thermal Device - Winding	None

Vibration Sensor Indicator	No Vibration Sensor
Winding Thermal 1	None
Winding Thermal 2	None

Nameplate

NP2672L			
CAT.NO.	EMVM3613D		
SPEC.	36H938T202G1		
IEC FRAME	D100LD	KW	3.7
VOLTS	230/460		
AMP	11.2/5.6		
RPM	3450	ENCL	TEFC
HZ	60	PH	3 CL F
SER.F.	1.15	DES	B CODE G
NEMA-NOM-EFF	88.5	I.P.	54
RATING	40C AMB-CONT		
CC	010A	USABLE AT 208V	N/A
DE	6206	ODE	6205
SER. #			

AC Induction Motor Performance Data

Record # 57404

Typical performance - not guaranteed values

Winding: 36WGT202-R012		Type: 3634M		Enclosure: TEFC	
Nameplate Data			460 V, 60 Hz: High Voltage Connection		
Rated Output (KW)	3.7	Full Load Torque	7.54 LB-FT		
Volts	230/460	Start Configuration	direct on line		
Full Load Amps	11.2/5.6	Breakdown Torque	45.7 LB-FT		
R.P.M.	3450	Pull-up Torque	31 LB-FT		
Hz	60 Phase	3	Locked-rotor Torque	38.1 LB-FT	
NEMA Design Code	B KVA Code	G	Starting Current	36.4 A	
Service Factor (S.F.)		1.15	No-load Current	2.23 A	
NEMA Nom. Eff.	88.5 Power Factor	93	Line-line Res. @ 25°C	1.8592 Ω	
Rating - Duty		40C AMB-CONT	Temp. Rise @ Rated Load	65°C	
S.F. Amps			Temp. Rise @ S.F. Load	78°C	

Load Characteristics 460 V, 60 Hz, 3.7 KW

% of Rated Load	25	50	75	100	125	150	S.F.
Power Factor	53	74	83	88	90	92	89
Efficiency	81	87.4	88.8	88.8	88.1	87.1	88.4
Speed	3571.6	3546.9	3521.5	3493.5	3464.6	3436.2	3476
Line amperes	2.74	3.63	4.75	6	7.36	8.7	6.82

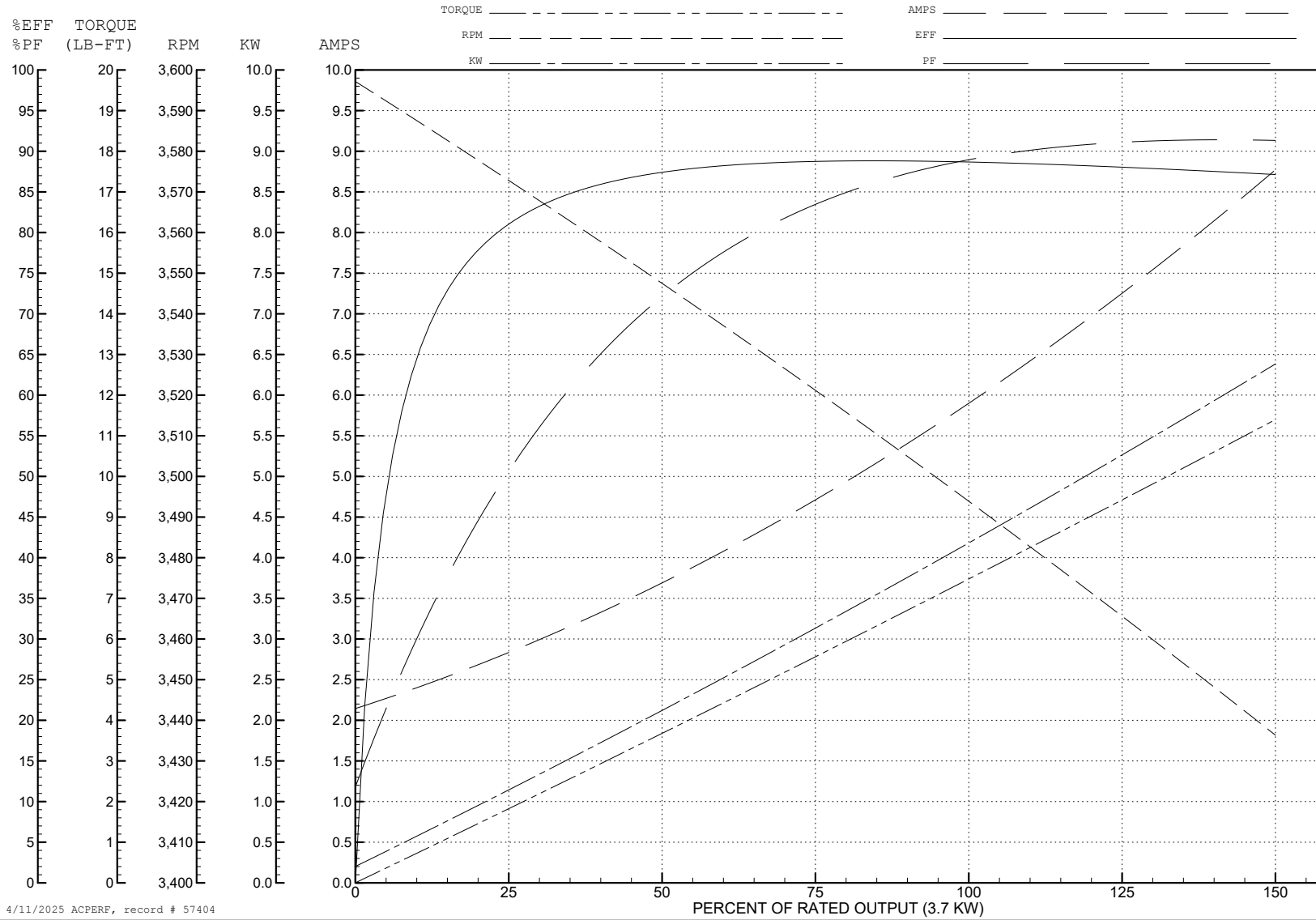
ABB Motors and Mechanical Inc.

WINDING # 36WGT202

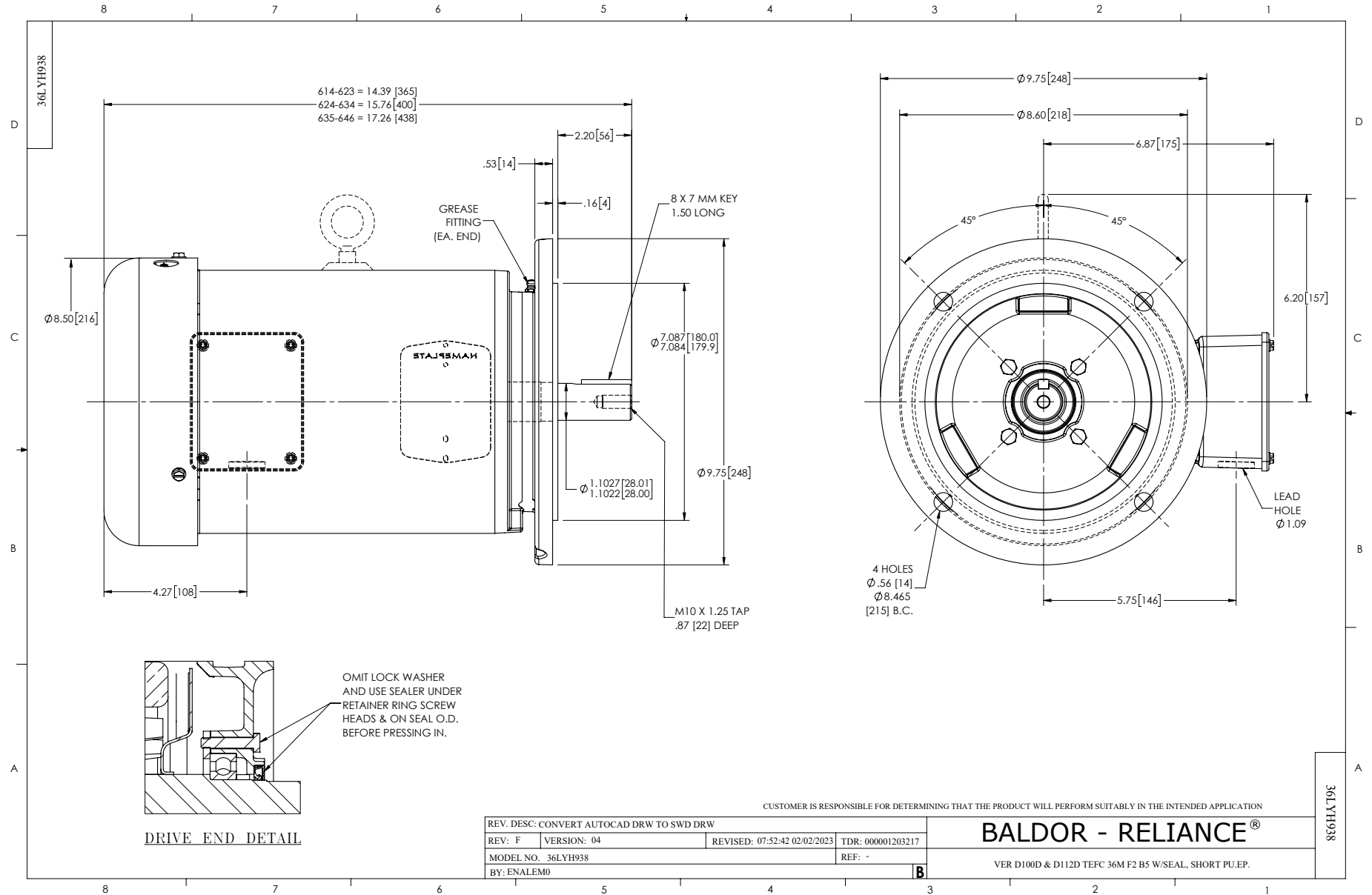
3.7 KW 3 PH 60 HZ 3450 RPM 460 V 3634M

Typical performance - not guaranteed values.

TORQUES (LB-FT): PO=45.7 PU=31 LR=38.1 LRA=36.4



4/11/2025 ACPERF, record # 57404



CD0005



LOW VOLTAGE
(2Y)



LINE

HIGH VOLTAGE
(1Y)



LINE

NOTES:

1. INTERCHANGE ANY TWO LINE LEADS TO REVERSE ROTATION.
2. OPTIONAL THERMOSTATS ARE PROVIDED WHEN SPECIFIED.
3. ACTUAL NUMBER OF INTERNAL PARALLEL CIRCUITS MAY BE A MULTIPLE OF THOSE SHOWN ABOVE.
4. LEAD COLORS ARE OPTIONAL. LEADS MUST ALWAYS BE NUMBERED AS SHOWN.

CD0005

REV. DESC: REVISE TO SHOW OPTIONAL COLORS			
REV. LTR: E	BY: JLP	REVISED: 01/19/99 10:15	TDR: 0171435
S00000		FILE: AAA00005140	MDL: -
		MTL: -	

BALDOR ELECTRIC Co.

3PH, DV, 9 LEADS