

BALDOR® • RELIANCE 

Product Information Packet

FDEM4314T

60HP,1780RPM,3PH,60HZ,364T,1462M,TEFC,F1

| Part Detail | | | | | | | |
|-------------|----|-------------|------------|-------------|------------|---------------|------------|
| Revision: | G | Status: | PRD/A | Change #: | | Proprietary: | No |
| Type: | AC | Elec. Spec: | A36WG1822 | CD Diagram: | 416820-002 | Mfg Plant: | |
| Mech. Spec: | | Layout: | 617428-066 | Poles: | 04 | Created Date: | 02-27-2014 |
| Base: | | Eff. Date: | 04-10-2018 | Leads: | 3#4,6#6 | | |

| Specs | | | |
|--------------------------------|-------------------------|--------------------------------|--------------------|
| Catalog Number: | FDEM4314T | Feedback Device: | NO FEEDBACK |
| Enclosure: | TEFC | Heater Indicator: | No Heater |
| Frame: | 364T | Insulation Class: | F |
| Frame Material: | Iron | Inverter Code: | Inverter Ready |
| Output @ Frequency: | 60.000 HP @ 60 HZ | KVA Code: | F |
| Synchronous Speed @ Frequency: | 1800 RPM @ 60 HZ | Lifting Lugs: | No Lifting Lugs |
| Voltage @ Frequency: | 230.0 V @ 60 HZ | Motor Lead Quantity/Wire Size: | 3 @ 4 AWG |
| | 460.0 V @ 60 HZ | Motor Type: | A3662M |
| XP Class and Group: | None | Mounting Arrangement: | F1 |
| XP Division: | Not Applicable | Power Factor: | 87 |
| Agency Approvals: | CCSA US | Pulley End Bearing Type: | Ball |
| | CSA EEV | Pulley Face Code: | Standard |
| Auxillary Box: | No Auxillary Box | Shaft Ground Indicator: | No Shaft Grounding |
| Base Indicator: | Rigid | Shaft Rotation: | Reversible |
| Bearing Grease Type: | Polyrex EM (-20F +300F) | Shaft Slinger Indicator: | Shaft Slinger |
| Current @ Voltage: | 135.000 A @ 230.0 V | Speed Code: | Single Speed |
| | 67.800 A @ 460.0 V | Motor Standards: | NEMA |
| Design Code: | B | Starting Method: | Direct on line |

| | | | |
|---------------------|---------------|----------------------------------|------|
| Drip Cover: | No Drip Cover | Thermal Device - Bearing: | None |
| Duty Rating: | CONT | Thermal Device - Winding: | None |

| Nameplate NP3159L | | | | | | | | | | |
|-------------------|---------------------------|-------|----------|--------------|-----------|-------------------------|---------------------|-------|-----------------------|------|
| SPEC NO. | A36-5275-1822 | | | CAT.NO. | FDEM4314T | | | FRAME | 364T | |
| HP | 60 | VOLTS | 230/460 | | PHASE | 3 | DESIGN | B | TYPE | P |
| RPM | 1780 | AMPS | 135/67.8 | | HZ | 60 | AMB | 40 | SF | 1.15 |
| DRIVE END BEARING | 65BC03JGG30A | | DUTY | CONT | | INSUL.CLASS | F | | | |
| OPP D.E. BEARING | 65BC03JGG30A | | ENCL | TEFC | | CODE | F | | | |
| SER.NO. | | | | POWER FACTOR | 87 | | NEMA-NOM-EFFICIENCY | 95 | | |
| | | | | | | MAX CORR KVAR | 11 | | GUARANTEED EFFICIENCY | 94.1 |
| | | | | | | NEMA NOM/CSA QUOTED EFF | | | | |
| | SUIT FOR 208 V @ 149 AMPS | | | | | MOTOR WEIGHT | | | | |

| Parts List | | |
|-------------|---------------------------------------|----------|
| Part Number | Description | Quantity |
| SA277816 | SA A36-5275-1822 | 1.000 EA |
| RA264364 | RA A36-5275-1822 | 1.000 EA |
| 000613006PU | N/P (RELEASE QTY 10,000) UL CSA LABEL | 1.000 EA |
| 000692000VD | LABEL WARNING | 1.000 EA |
| NP3159L | SUPER-E FARM DUTY, SS, CC, CSA-C US, | 1.000 EA |
| 421948032 | LABEL, MYLAR | 1.000 EA |
| 032018008AK | HHCS 1/4-20X1 PLATED | 4.000 EA |
| 032018012DK | HHCS 1/2-13X1-1/2 PLTD. | 4.000 EA |
| 032018024CK | HHCS 3/8-16X3 PLTD. | 3.000 EA |
| 034180012DA | KEY 1X4X1/4X1-1/2 L | 1.000 EA |
| 034690001AB | 1/8" NPT SQHDPLG | 1.000 EA |
| 702676001C | FAN 360 | 1.000 EA |
| 078559001A | +FANCV - 360 | 1.000 EA |
| 085922073B | BRKT 360 085922072WCC KB | 1.000 EA |
| 410700004F | WSHR | 1.000 EA |
| 415072001B | CLAMP | 1.000 EA |
| 032018012DK | HHCS 1/2-13X1-1/2 PLTD. | 4.000 EA |
| 032018024CK | HHCS 3/8-16X3 PLTD. | 3.000 EA |
| 034690001AB | 1/8" NPT SQHDPLG | 1.000 EA |
| 085922093AE | BRKT 360 085922072WCC | 1.000 EA |
| 032018005AK | HHCS 1/4-20X5/8 PLATED | 4.000 EA |
| 032018008CK | HHCS 3/8-16X1L PLATED | 4.000 EA |
| 033512004LB | HHTTS 1/4-20X1/2 PLTD. | 1.000 EA |
| 043292000AJ | GASK 320-400 | 1.000 EA |

| Parts List (continued) | | |
|-------------------------------|---|-----------------|
| Part Number | Description | Quantity |
| 077176000L | C/BOX, 360-400 | 1.000 EA |
| 077176001A | CBOXC, PAINTED 360-400 | 1.000 EA |
| 402731001A | GASK 360-440 | 1.000 EA |
| 406099000A | PLUG - FAN COVER 320-440 | 1.000 EA |
| 415000103D | T/LUG #4AWG-1/0AWG W/HOLE FOR .250 BOLT | 1.000 EA |
| MG1025C02 | WILKOFASST SG, 787.105, TAN | 0.250 GA |
| 033775004EA | DRSCR #6-1/4 304 S.S. | 2.000 EA |
| 034180034HA | KEY 5/8X5/8X4-1/4 L | 1.000 EA |
| 415028001Y | SEAL - 360 | 1.000 EA |
| 423709011C | WASHER | 3.000 EA |
| 415045002E | SLGR | 1.000 EA |
| 000692000CY | N/P | 1.000 EA |
| 034690001AB | 1/8" NPT SQHDPLG | 1.000 EA |
| 034690001AB | 1/8" NPT SQHDPLG | 1.000 EA |
| 034690002AB | PPLG 1/4" PLTD. | 1.000 EA |
| 034690002AB | PPLG 1/4" PLTD. | 1.000 EA |
| 032509020C | CARRIAGE BOLT - 360 | 3.000 EA |
| 14PA1000 | PACKAGING 314 GROUP COMBINED PRINT | 1.000 EA |


| | | | | | | |
|-----------|-------------|---------------|-----------|---|-------------|---------|
| REL. S.O. | FRAME | HP | TYPE | PHASE/HERTZ | RPM | VOLTS |
| | 364T | 60 | P | 3/60 | 1780 | 230/460 |
| AMPS | DUTY | AMB °C/INSUL. | S.F. | NEMA DESIGN | CODE LETTER | ENCL. |
| 136/67.8 | CONT | 40/F | 1.15 | B | F | FCXE |
| E/S | ROTOR | TEST S.O. | TEST DATE | STATOR RES. @25 °C OHMS (BETWEEN LINES) | | |
| - | 418141035YE | --- | --- | .0269/.107 | | |

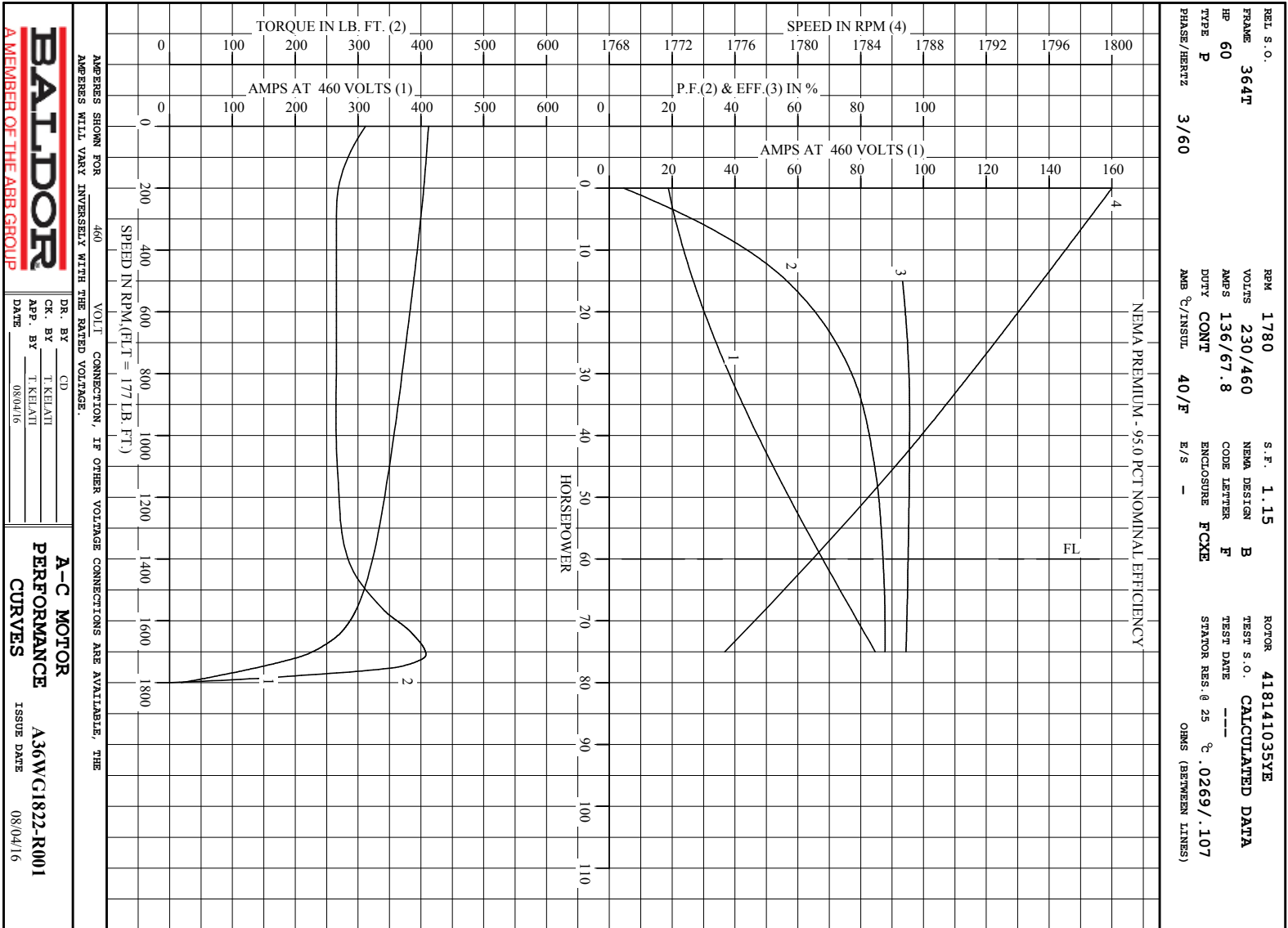
PERFORMANCE

| LOAD | HP | AMPERES | RPM | POWER FACTOR % | EFFICIENCY % |
|--------------|------|---------|--------------------|----------------|--------------|
| NO LOAD | 0 | 18.8 | 1800 | 4.55 | 0 |
| 1/4 | 15.0 | 26.7 | 1796 | 56.6 | 93.3 |
| 2/4 | 30.0 | 38.2 | 1791 | 77.1 | 95.4 |
| 3/4 | 45.0 | 52.2 | 1786 | 84.5 | 95.5 |
| 4/4 | 60.0 | 67.8 | 1781 | 87.1 | 95.1 |
| 5/4 | 75.0 | 84.7 | 1775 | 87.8 | 94.5 |
| SPEED TORQUE | | | | | |
| | | RPM | TORQUE % FULL LOAD | TORQUE LB.-FT. | AMPERES |
| LOCKED ROTOR | | 0 | 176 | 312 | 412 |
| PULL UP | | 270 | 150 | 266 | 401 |
| BREKDOWN | | 1710 | 231 | 408 | 216 |
| FULL LOAD | | 1781 | 100 | 177 | 67.8 |

AMPERES SHOWN FOR 460. VOLT CONNECTION. IF OTHER VOLTAGE CONNECTIONS ARE AVAILABLE, THE AMPERES WILL VARY INVERSELY WITH THE RATED VOLTAGE

REMARKS : CALCULATED DATA
NEMA PREMIUM - 95.0 PCT NOMINAL EFFICIENCY

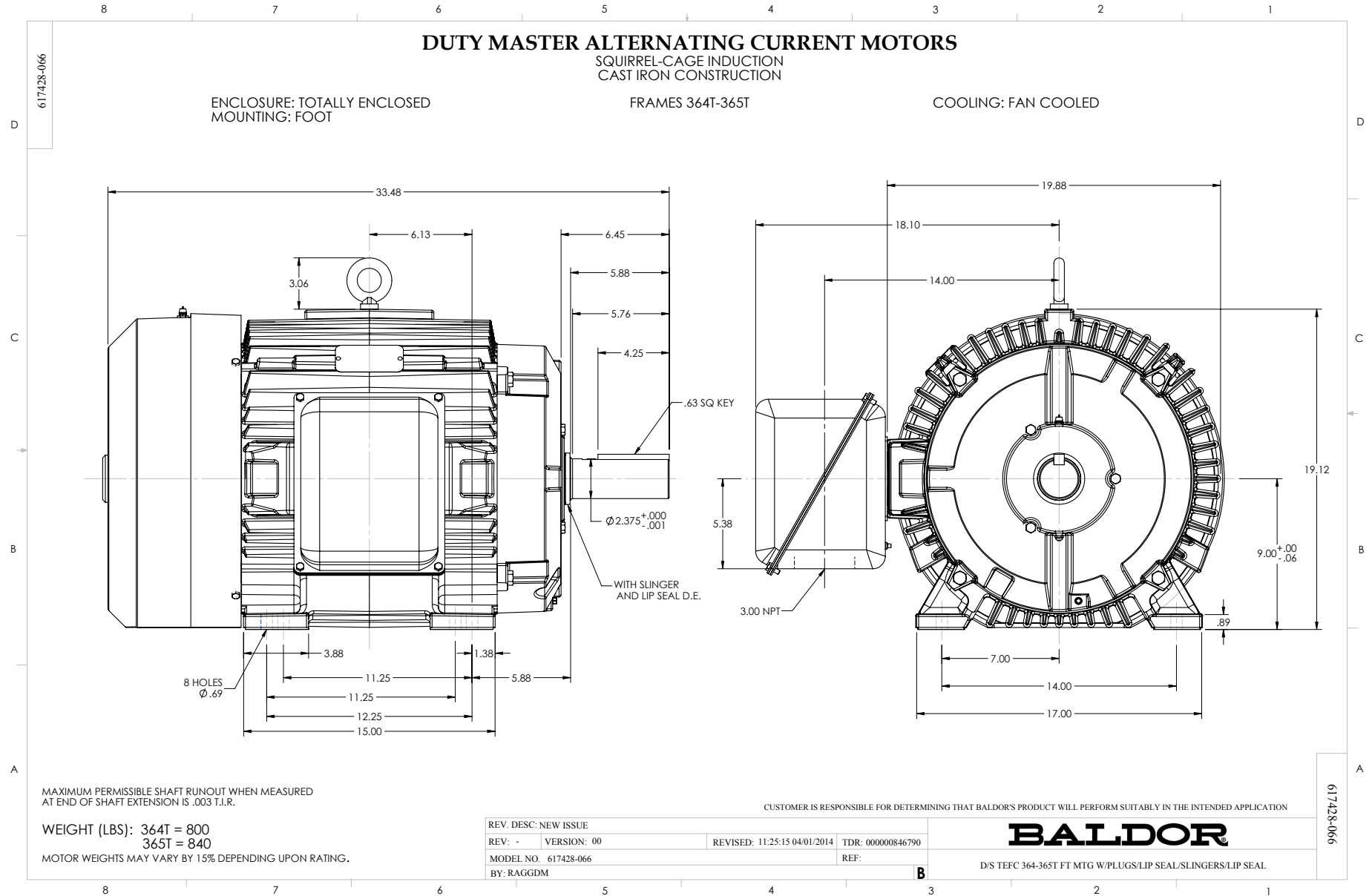
| | | | |
|--|---------|------------|---------------------|
|  A MEMBER OF THE ABB GROUP | DR. BY | CD | A-C MOTOR |
| | CR. BY | T. RELIANT | PERFORMANCE DATA |
| | APP. BY | T. RELIANT | A36WG1822-R001 |
| | DATE | 08/04/16 | ISSUE DATE 08/04/16 |



AMPERES SHOWN FOR 460 VOLT CONNECTION, IF OTHER VOLTAGE CONNECTIONS ARE AVAILABLE, THE AMPERES WILL VARY INVERSELY WITH THE RATED VOLTAGE.

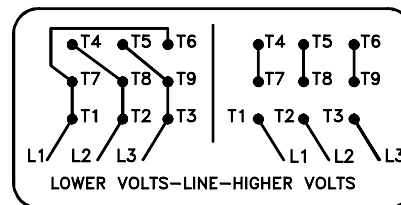
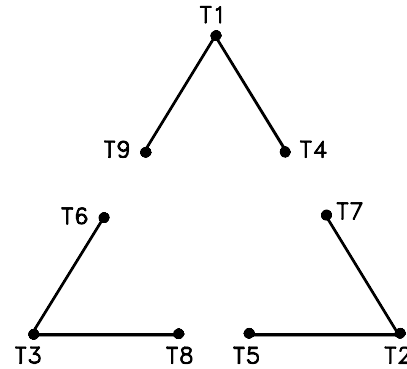
DR. BY _____ CD _____
 CK. BY T. KEHATI
 App. BY T. KEHATI
 DATE 08/04/16

A-C MOTOR PERFORMANCE CURVES A36WC1822-R001
 ISSUE DATE 08/04/16



416820-002

A-C MOTOR
 CONNECTION DIAGRAM
 STANDARD 9 LEAD DELTA-CONNECTED



(N.P. 1575-B)

416820-002

| | | |
|--------------------------------------|------------------------------|-------------------|
| REV. DESC: LOADED TO BUS, C/R 335225 | | |
| REV. LTR: - | VERSION: 00 | TDR: 000000538207 |
| FILE: \MGA\00000\661 | REVISED: 10:47:51 04/30/2010 | |
| MTL: - | BY: RAGRA | |

BALDOR

CONN DIAG - STANDARD 9 LEAD, DELTA-CONNECTED

SH 1 of 1

Marketing maintained PDF of MN408:

<http://www.baldor.com/support/Literature/Load.ashx/MN408?ManNumber=MN408>

Marketing maintained PDF of MN416:

<http://www.baldor.com/support/Literature/Load.ashx/MN416?ManNumber=MN416>