

**BALDOR® • RELIANCE** 

**Product Information Packet**

**FPM2538T**

**40//30HP,3500//2910RPM,3PH,60//50HZ,286T**

Part Detail							
Revision:	B	Status:	PRD/A	Change #:		Proprietary:	No
Type:	AC	Elec. Spec:	39WGX928	CD Diagram:	CD0104	Mfg Plant:	
Mech. Spec:	39L35	Layout:	39LYL035	Poles:	02	Created Date:	03-13-2017
Base:	RG	Eff. Date:	08-22-2018	Leads:	12#10		

Specs			
Catalog Number:	FPM2538T	Front Shaft Indicator:	None
Enclosure:	ODP	Heater Indicator:	No Heater
Frame:	286TS	Insulation Class:	F
Frame Material:	Steel	Inverter Code:	Not Inverter
Output @ Frequency:	30.000 HP @ 50 HZ	KVA Code:	G
	40.000 HP @ 60 HZ	Lifting Lugs:	Standard Lifting Lugs
Synchronous Speed @ Frequency:	3000 RPM @ 50 HZ	Locked Bearing Indicator:	No Locked Bearing
Voltage @ Frequency:	380.0 V @ 50 HZ	Motor Lead Quantity/Wire Size:	12 @ 10 AWG
	230.0 V @ 60 HZ	Motor Lead Exit:	Ko Box
	190.0 V @ 50 HZ	Motor Lead Termination:	Flying Leads
	460.0 V @ 60 HZ	Motor Type:	3954M
XP Class and Group:	None	Mounting Arrangement:	F1
XP Division:	Not Applicable	Power Factor:	91
Agency Approvals:	UL	Product Family:	Fire Pump Motor
	CSA EEV	Pulley End Bearing Type:	Ball
Auxillary Box:	No Auxillary Box	Pulley Face Code:	Standard
Auxillary Box Lead Termination:	None	Pulley Shaft Indicator:	Standard
Base Indicator:	Rigid	Rodent Screen:	None

<b>Bearing Grease Type:</b>	Polyrex EM (-20F +300F)	<b>Shaft Extension Location:</b>	Pulley End
<b>Blower:</b>	None	<b>Shaft Ground Indicator:</b>	No Shaft Grounding
<b>Current @ Voltage:</b>	90.000 A @ 230.0 V	<b>Shaft Rotation:</b>	Reversible
	84.000 A @ 190.0 V	<b>Shaft Slinger Indicator:</b>	No Slinger
	45.000 A @ 460.0 V	<b>Speed Code:</b>	Single Speed
	42.000 A @ 380.0 V	<b>Motor Standards:</b>	NEMA
<b>Design Code:</b>	B	<b>Starting Method:</b>	Wye Start - Delta Run
<b>Drip Cover:</b>	No Drip Cover	<b>Thermal Device - Bearing:</b>	None
<b>Duty Rating:</b>	CONT	<b>Thermal Device - Winding:</b>	None
<b>Electrically Isolated Bearing:</b>	Not Electrically Isolated	<b>Vibration Sensor Indicator:</b>	No Vibration Sensor
<b>Feedback Device:</b>	NO FEEDBACK	<b>Winding Thermal 1:</b>	None
<b>Front Face Code:</b>	Standard	<b>Winding Thermal 2:</b>	None

Nameplate NP3454L											
CAT.NO.	FPM2538T			CUST P/N				I.P.	23		
SPEC.	39L035X928H2			SER.NO.				FRAME	286TS		
HZ	60	HP	40	RPM	3500	HZ	50	HP	30	RPM	2910
VOLTS	230/460			CODE	G	VOLTS	190/380			CODE	G
AMPS	90/45			DES	B	AMPS	84/42			DES	B
EFF	91.7	SER.F.	1.15	PF	91	EFF	91	SER.F.	1.15	PF	91
RATING	40C AMB-CONT			DE BRG	6311			GREASE	POLYREX EM		
BLANK				ODE BRG	6208			MTR. WT.	280		
				CLASS	F			PH	3		
				ENCL	ODP			CC	010A		
HTR-VOLTS		HTR-AMPS		HTR-WATTS							

Parts List		
Part Number	Description	Quantity
SA335518	SA 39L035X928H2	1.000 EA
RA323729	RA 39L035X928H2	1.000 EA
HA6361A01	LIFTING LUG FOR 37, 39 & 40 FRAME ZINC	2.000 EA
09CB2800A01	ADAPTER MACH FOR 09CB3000 AND 10CB3000	1.000 EA
84XN3118J08	5/16-18 X 1/2 SOC HD CAP SCREW	2.000 EA
HW1001A31	LOCKWASHER 5/16, ZINC PLT.591 OD, .319 I	2.000 EA
WD1000B25	GND LUG, BURNDY L125HP OR T&B L125HP-BB	1.000 EA
19XW3118G08	.31-18X.50,HEX WSHR HD,TAPTITE 2,GREEN	1.000 EA
10CB3000SP	STD KO BOX MODEL 310,312,314 MTRS W/2.00	1.000 EA
19XW3118A12	.31-18 X .75 HEX WASHER HEAD TAPTITE II	4.000 EA
HW1001A31	LOCKWASHER 5/16, ZINC PLT.591 OD, .319 I	4.000 EA
39EP3200A01SP	FR/PU ENDPLATE, MACH	1.000 EA
HW5100A08	W3118-035 WVY WSHR (WB)	1.000 EA
39EP3202A01	ENDPLATE MACH	1.000 EA
XY3816A12	3/8-16 FINISHED NUT	8.000 EA
10CB3500SP	CONDUIT BOX LID, CAST	1.000 EA
51XW2520A12	.25-20 X .75, TAPTITE II, HEX WSHR SLTD	4.000 EA
HW2501G17	KEY, 3/8 SQ X 1.875	1.000 EA
LB1115N	LABEL,LIFTING DEVICE (ON ROLLS)	1.000 EA
HW4500A03	GREASE FITTING, .125 NPT 1610(ALEMITE) 8	1.000 EA
HW4500A20	1/8NPT SL PIPE PLUG	1.000 EA
HA4051A00	PLASTIC CAP FOR GREASE FITTING	1.000 EA
MJ1000A02	GREASE, POLYREX EM EXXON (USe 4824-15A)	0.030 LB
HW4500A03	GREASE FITTING, .125 NPT 1610(ALEMITE) 8	1.000 EA

<b>Parts List (continued)</b>		
<b>Part Number</b>	<b>Description</b>	<b>Quantity</b>
HW4500A20	1/8NPT SL PIPE PLUG	1.000 EA
HA4051A00	PLASTIC CAP FOR GREASE FITTING	1.000 EA
MG1025R44	WILKOFASST, 784.109, CARMINE RED #3002	0.050 GA
85XU0407S04	4X1/4 U DRIVE PIN STAINLESS	2.000 EA
HA3154A04	THRUBOLT STUD 3/8-16 X 18.750	4.000 EA
39AD2002A01	BAFFLE PLATE 39 OPEN, SLOTTED BAND MTRS	1.000 EA
39AD2002A01	BAFFLE PLATE 39 OPEN, SLOTTED BAND MTRS	1.000 EA
LB1119N	WARNING LABEL	1.000 EA
LC0104A01	CONNECTION DIAGRAM	1.000 EA
NP3454L	ALUM FIRE PUMP MOTOR(LEGACY/BALDOR ONLY)	1.000 EA
40PA1000	PACKAGING GROUP	1.000 EA
MN416A01	TAG-INSTAL-MAINT no wire (1200/bx) 5/18	1.000 EA

**AC Induction Motor Performance Data**

Record # 54883 - Typical performance - not guaranteed values

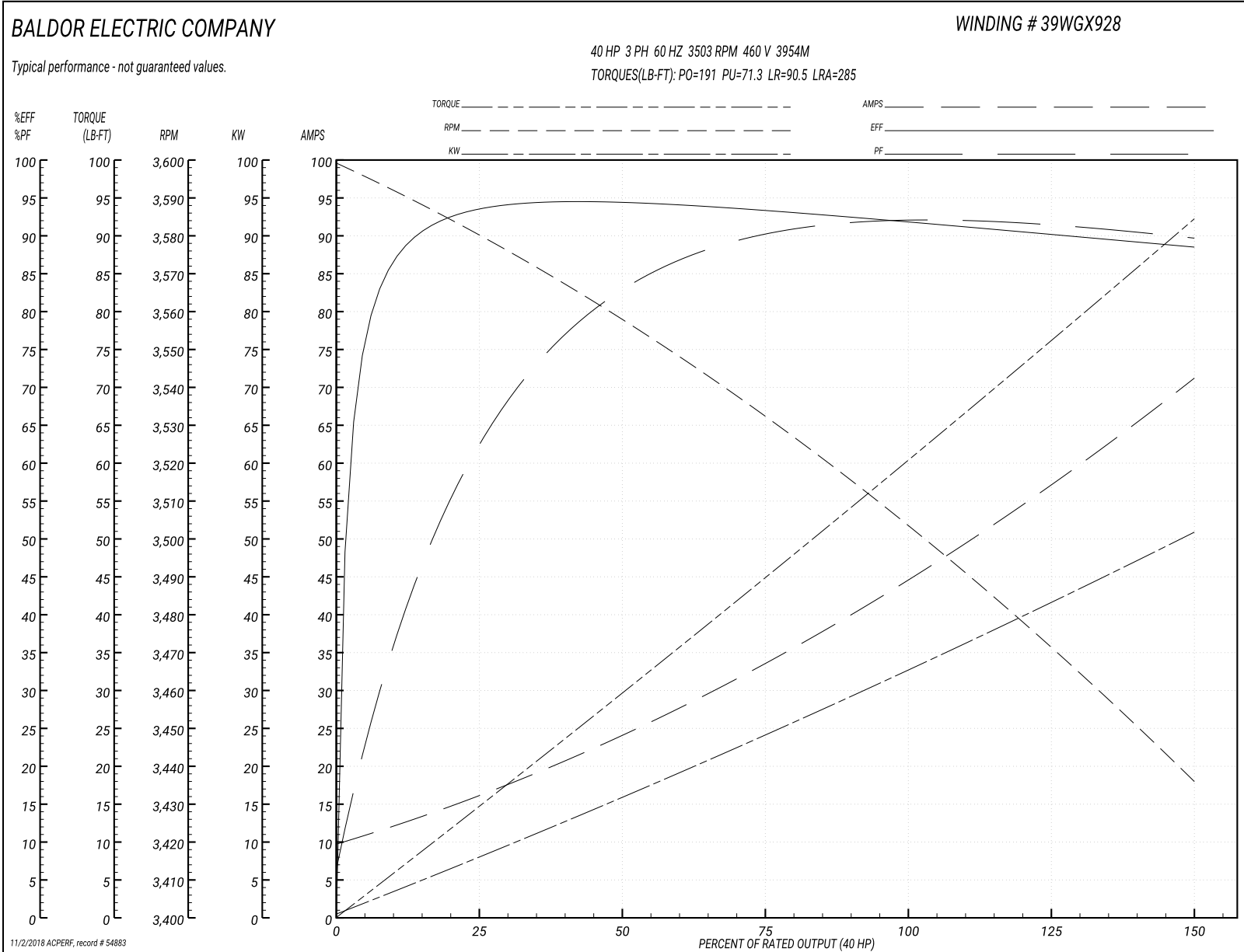
<b>Winding:</b> 39WGX928-R001	<b>Type:</b> 3954M	<b>Enclosure:</b> OPSB
-------------------------------	--------------------	------------------------

Nameplate Data				460 V, 60 Hz: High Voltage Connection	
Rated Output (HP)	40//30			Full Load Torque	60.6 LB-FT
Volts	230/460//190/380			Start Configuration	direct on line
Full Load Amps	90/45//84/42			Breakdown Torque	191 LB-FT
R.P.M.	3500//2910			Pull-up Torque	71.3 LB-FT
Hz	60//50	Phase	3	Locked-rotor Torque	90.5 LB-FT
NEMA Design Code	B	KVA Code	G	Starting Current	285 A
Service Factor (S.F.)	1.15			No-load Current	10.5 A
NEMA Nom. Eff.	91.7	Power Factor	91	Line-line Res. @ 25°C	0.23 Ω
Rating - Duty	40C AMB-CONT			Temp. Rise @ Rated Load	63°C
S.F. Amps				Temp. Rise @ S.F. Load	79°C
				Locked-rotor Power Factor	27.2
				Rotor inertia	1.38 LB-FT <sup>2</sup>

Load Characteristics 460 V, 60 Hz, 40 HP

% of Rated Load	25	50	75	100	125	150	S.F.
Power Factor	68	85	90	91	91	90	91
Efficiency	93.2	94	93.4	91.9	90.3	88.5	91
Speed	3580	3557	3532	3503	3471	3436	3484
Line amperes	15.3	23.9	34	45.3	57.7	70.7	52.7

Performance Graph at 460V, 60Hz, 40.0HP Typical performance - Not guaranteed values





**AC Induction Motor Performance Data**

Record # 54884 - Typical performance - not guaranteed values

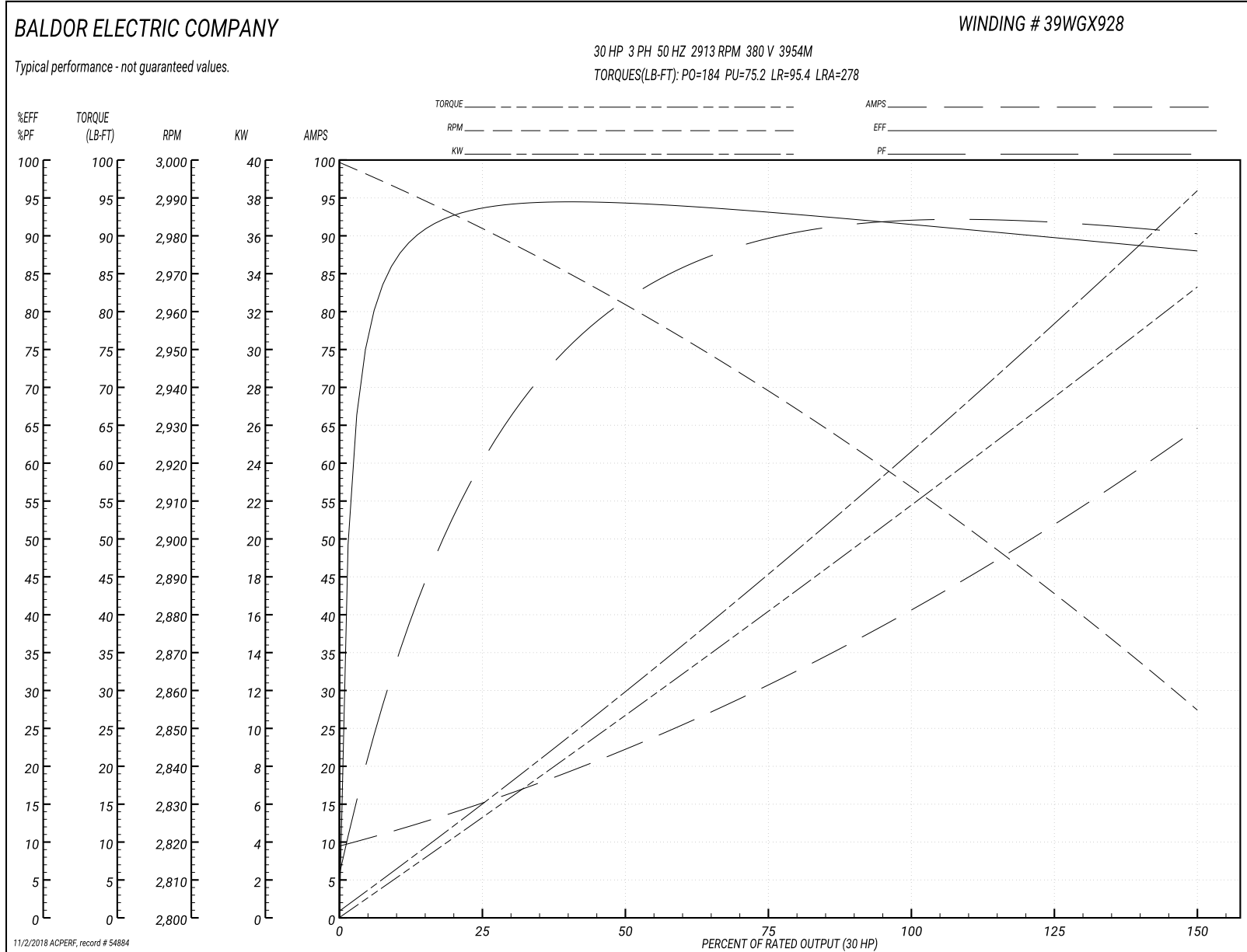
<b>Winding:</b> 39WGX928-R001	<b>Type:</b> 3954M	<b>Enclosure:</b> OPSB
-------------------------------	--------------------	------------------------

Nameplate Data				380 V, 50 Hz: High Voltage Connection	
Rated Output (HP)	40//30			Full Load Torque	54.6 LB-FT
Volts	230/460//190/380			Start Configuration	direct on line
Full Load Amps	90/45//84/42			Breakdown Torque	184 LB-FT
R.P.M.	3500//2910			Pull-up Torque	75.2 LB-FT
Hz	60//50	Phase	3	Locked-rotor Torque	95.4 LB-FT
NEMA Design Code	B	KVA Code	G	Starting Current	278 A
Service Factor (S.F.)	1.15			No-load Current	10.2 A
NEMA Nom. Eff.	91.7	Power Factor	91	Line-line Res. @ 25°C	0.23 Ω
Rating - Duty	40C AMB-CONT			Temp. Rise @ Rated Load	55°C
S.F. Amps				Temp. Rise @ S.F. Load	70°C
				Locked-rotor Power Factor	30.6
				Rotor inertia	1.38 LB-FT <sup>2</sup>

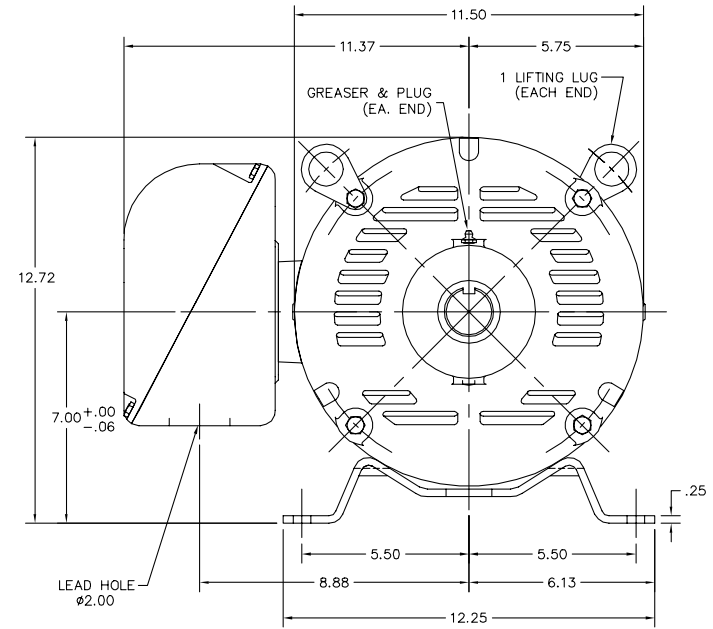
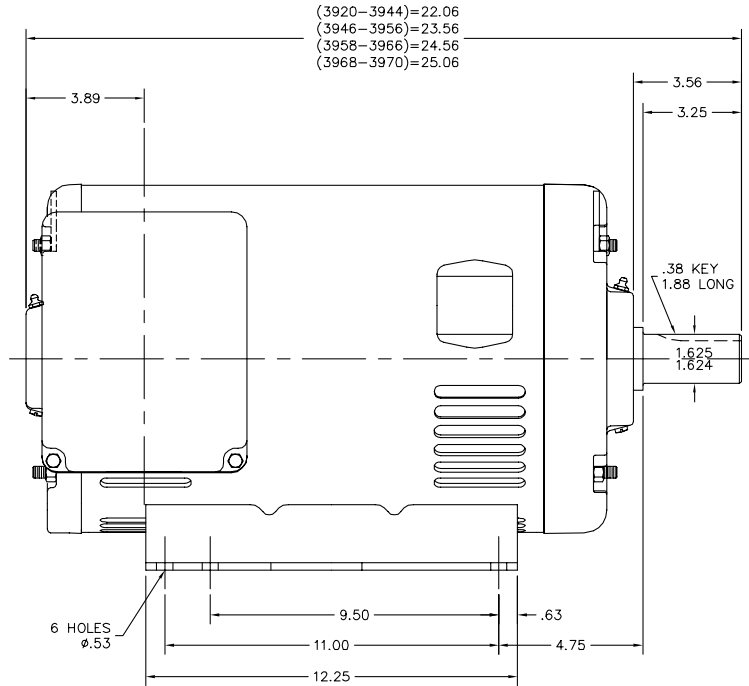
Load Characteristics 380 V, 50 Hz, 30 HP

% of Rated Load	25	50	75	100	125	150	S.F.
Power Factor	66	84	89	91	91	91	91
Efficiency	93.5	94	93.1	91.6	89.9	87.9	90.6
Speed	2982	2961	2939	2913	2885	2855	2896
Line amperes	14.4	22	31.1	41.3	52.5	64.1	48

Performance Graph at 380V, 50Hz, 30.0HP Typical performance - Not guaranteed values



39LYL035



39LYL035

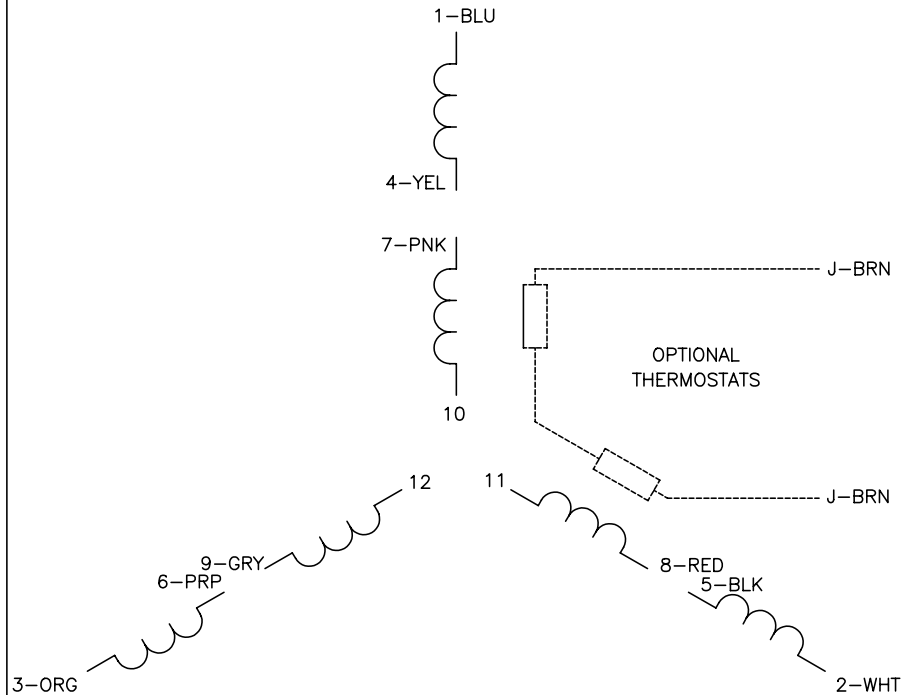
CUSTOMER IS RESPONSIBLE FOR DETERMINING THAT BALDOR'S PRODUCT WILL PERFORM SUITABLY IN THE INTENDED APPLICATION.

REV. DESC: CORRECT DESCRIPTION		
REV. LTR: G	VERSION: 04	TDR: 000001019052
FILE: \AAA\00007\095	REVISED: 12:37:51 03/13/2017	BY: ENNINDO
MTL: -		

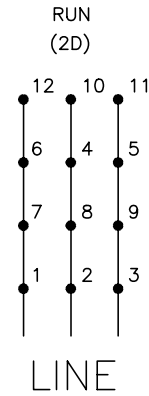
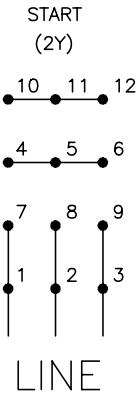
**BALDOR**

HOR OPSB 284-6TS  
SH 1 of 1

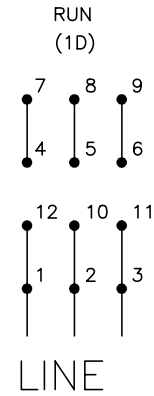
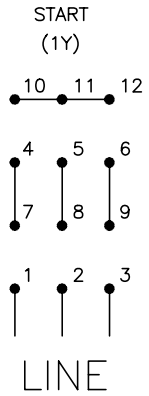
CD0104



**LOW VOLTAGE**



**HIGH VOLTAGE**



**NOTES:**

1. INTERCHANGE ANY TWO LINE LEADS TO REVERSE ROTATION.
2. OPTIONAL THERMOSTATS ARE PROVIDED WHEN SPECIFIED.
3. ACTUAL NUMBER OF INTERNAL PARALLEL CIRCUITS MAY BE A MULTIPLE OF THOSE SHOWN ABOVE.
4. LEAD COLORS ARE OPTIONAL. LEADS MUST ALWAYS BE NUMBERED AS SHOWN.

REV. DESC: REVISE TO SHOW OPTIONAL COLORS			
REV. LTR: C	BY: JLP	REVISED: 01/19/99 4:24	TDR: 0171435
CD0104		FILE: AAA00008377	MDL: -
		MTL: -	

**BALDOR ELECTRIC Co.**

3PH, DV, 12 LEADS, Y START/D RUN

CD0104

Marketing maintained PDF of MN416:

<http://www.baldor.com/support/Literature/Load.ashx/MN416?ManNumber=MN416>