

BALDOR® • RELIANCE

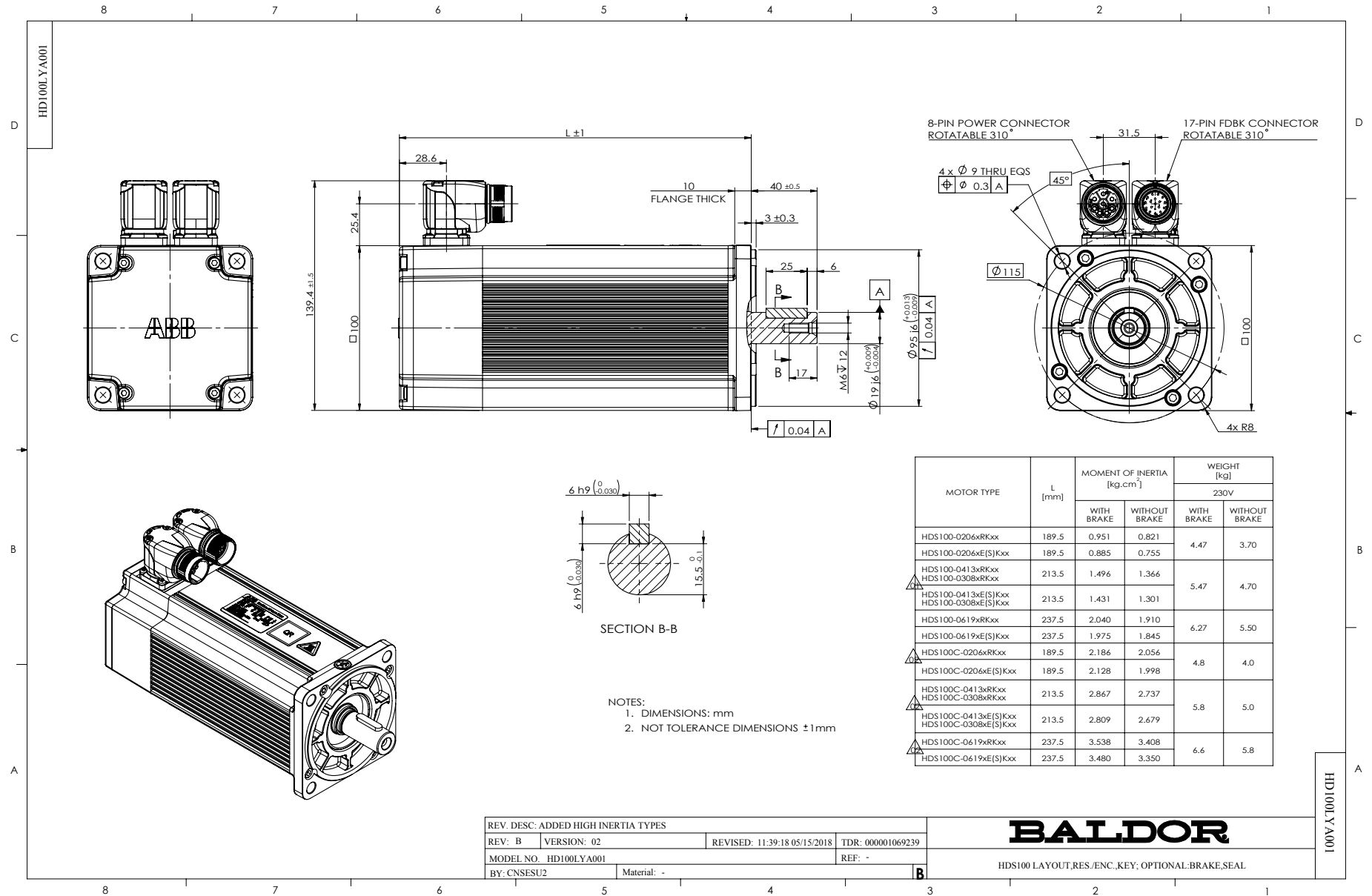
Product Information Packet

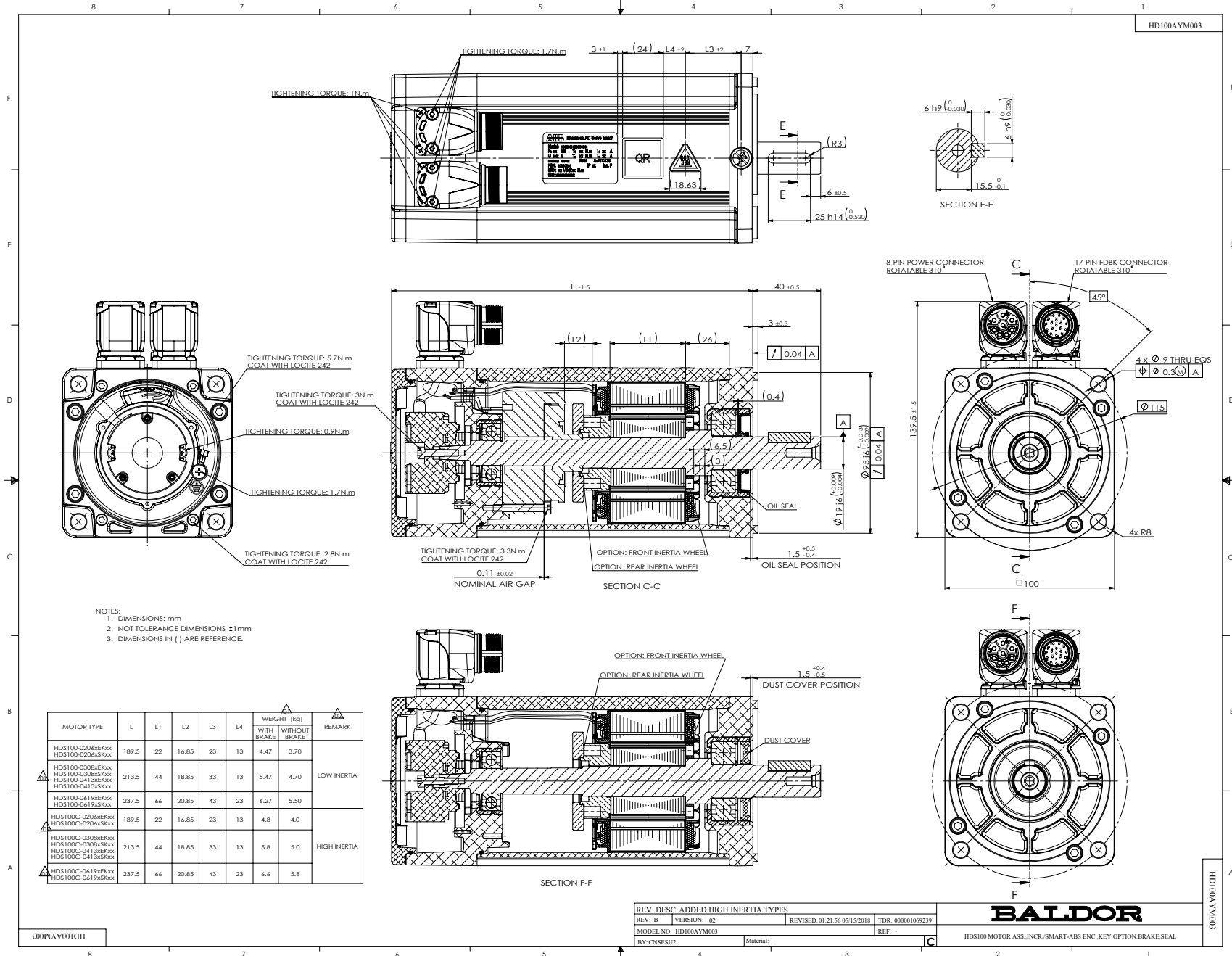
HDS100-0206AEKNN

HDS100-0206AEKNN, INCR. ENCODER, KEY, 230V

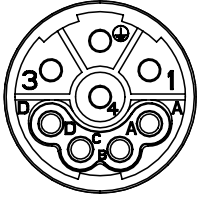
Specs			
Bearing Grease Type:	Polyrex EM		
Dimensional Drawing Numbers:	HD100LYA001		
Nameplate Amps:	3.2		

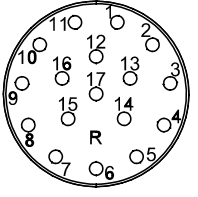
No performance data has been
assigned to this product.





CD2167A03

MOTOR & BRAKE & PTC LEADS			
 WD1456A04 (PLUG SIDE)	PIN	FUNCTION	COLOR
	1	U (R)	BLACK
	2	GROUND (PE)	YELLOW/GREEN
	3	W (T)	BLUE
	4	V (S)	RED
	A	PTC	BLUE BLACK
	B	PTC	BLUE
	C	BRAKE	RED
	D	BRAKE	BLUE

INCREMENTAL ENCODER LEADS						
 WD1456A06 (PLUG SIDE)	PIN	FUNCTION	COLOR	PIN	FUNCTION	COLOR
	1	DC+5V	RED	10	U	BROWN
	2	GND	BLACK	11	\bar{U}	BROWN/BLACK
	3	A	BLUE	12	V	GRAY
	4	\bar{A}	BLUE/BLACK	13	\bar{V}	GRAY/BLACK
	5	B	GREEN	14	W	WHITE
	6	\bar{B}	GREEN/BLACK	15	\bar{W}	WHITE/BLACK
	7	Z	YELLOW	16	-	-
	8	\bar{Z}	YELLOW/BLACK	17		
	9	-	-			

REV. DESC: CORRECTED PTC THERMISTER LEAD COLOR			
REV: C	VERSION: 03	REVISED: 08:59:39 06/23/2017	TDR: 000001025915
CD2167A03	MODEL NO. CD2167A03		REF: -
	BY: CNSESU2	Material: -	

BALDOR

CONNECTION DIAGRAM, POWER & INC. ENCODER

CD2167A03