

BALDOR® • RELIANCE

Product Information Packet

HDS100-0413AEKNN

HDS100-0413A w/Inc encoder(2500ppr), Key

Specs			
Bearing Grease Type:	Polyrex EM		
Dimensional Drawing Numbers:	HD100LYA001		
Nameplate Amps:	6.4		

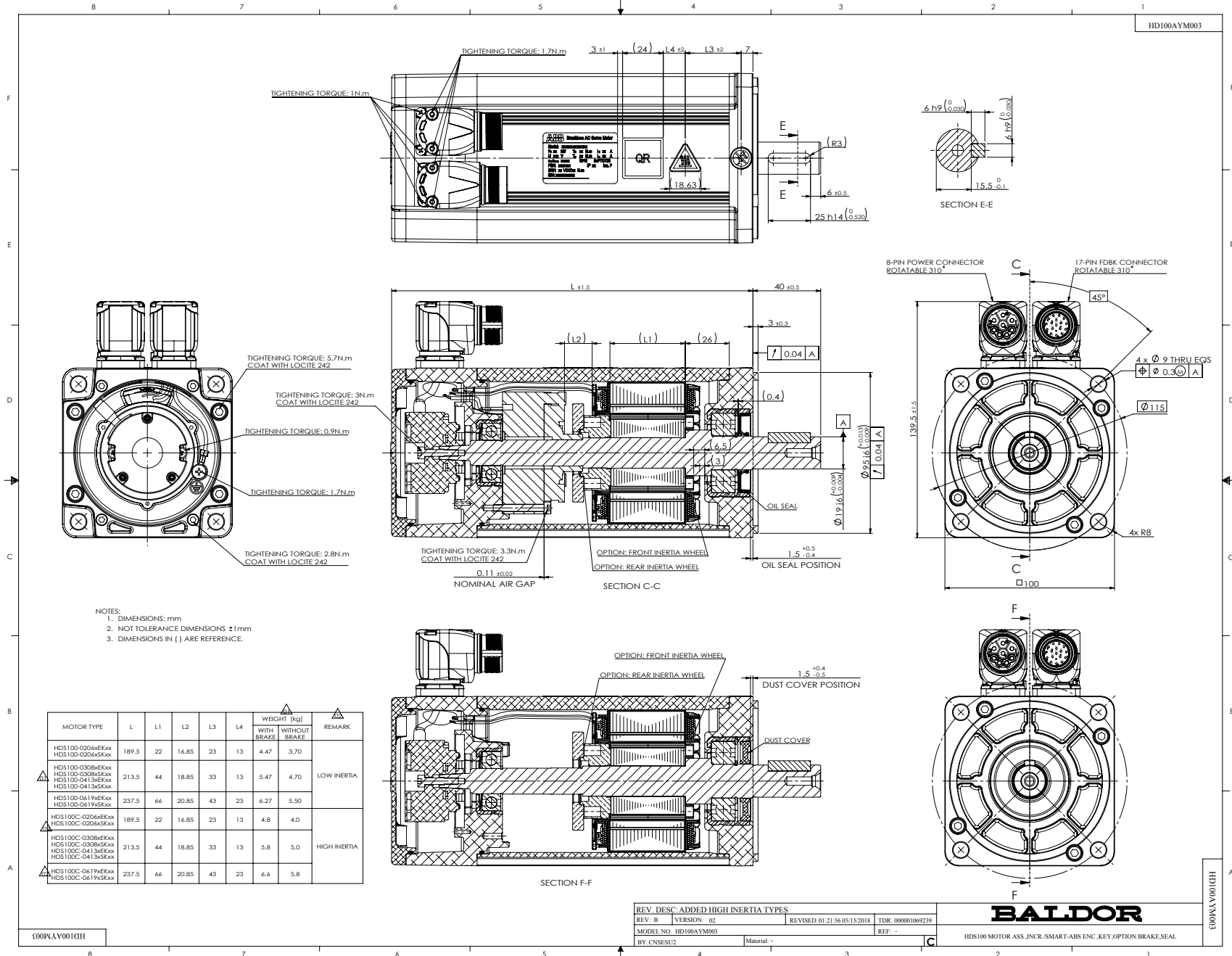
Nameplate LB1577T01

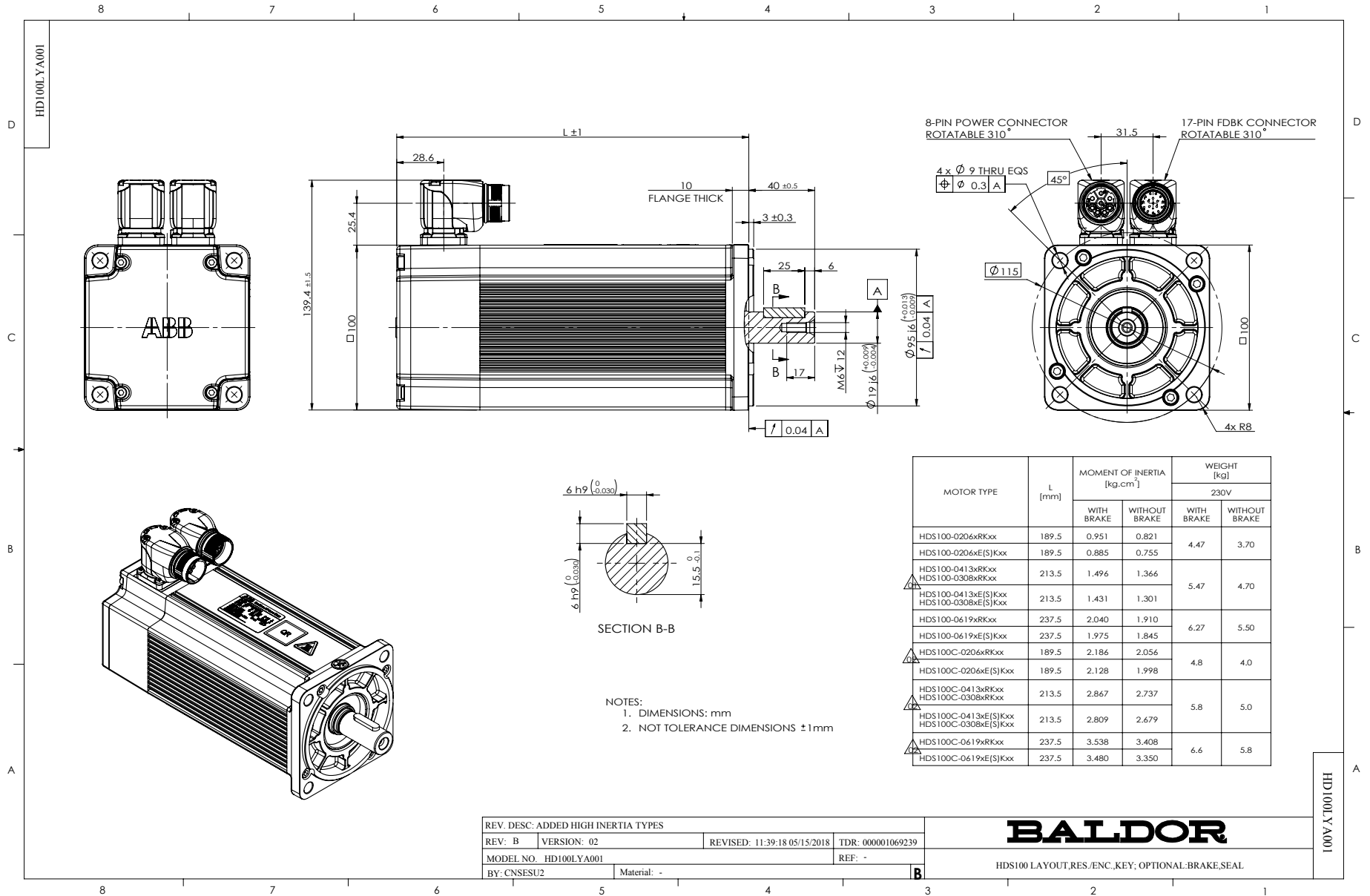
MODEL:	HDS100-0413AEKNN					
PN	1.3	KW		TO	4.0	N.M
U	230	V		TP	12.0	N.M
NN/N MAX	3000/4000			RPM		
FBK	ENC			IP	IP54	
BRK:		VDC/			N.M	
S/N						
						IO 6.4 A
						IP 22.0 A
						3XPTC130
						INS F

Parts List		
Part Number	Description	Quantity
HD100SA0001A44	STAROR ASSEMBLYHDS100, 44MM STACK,230V	1.000 EA
HD100SH0003A44	SHAFT,ROTOR L44MM, HDS100,TAMAGAWA INCR.	1.000 EA
HD100RA1000A44	ROTOR ASSEMBLY (W/O SHAFT),HDS100,SL=44M	1.000 EA
HW5010C15	CIRCLIPS FOR SHAFT-TYPE A,15,GB/T894.1	1.000 EA
HD100EP3100A01	END PLATE,REAR,MACHINED,HDS100,RESOLVER/	1.000 EA
HW5100D35	SPRING WASHER,JB/T7590-D35-H CLASS	1.000 EA
BG6202C02	DEEP GROOVE BALL BEARING,6202-2Z/C3,-30C	1.000 EA
84YN0050J045C	HEX SOCKET HEAD CAP SCREW,M5X45,GB/T70.1	4.000 EA
MJ5004A05CN	#242-21 LOCITE GENERAL PURPOSE MED. STR	0.300 ML
HW5010C20	CIRCLIPS FOR SHAFT-TYPE A,20MM,GB/T 894.	1.000 EA
HD100OE1000E02	SUB-ASSEMBLY, INCR. ENCODER, HDS100	1.000 EA
LD2200A60	GRND LEAD ASSY,8" 18AWG,GRN/YEL,M4 RING	1.000 EA
09YN0040A008	SCREW ASSEMBLY,CROSS RECESSED PAN HEAD,S	1.000 EA
HD100CB0001A01	END COVER,FRONT,HDS100,MACHINING	1.000 EA
84YN0040J012	SCREW SOCKET HD M4 X 0.7 X 12MM	4.000 EA
WD1456A04	CONNECTOR,POWER,M23,8 PIN,MALE,PHOENIX C	1.000 EA
WD1456A04A01	CRIMP CONTACT,2MM,PHOENIX,SF-20KP004,FOR	4.000 EA
WD1456A04A02	CRIMP CONTACT,1MM,PHOENIX,SF-6CP2000,FOR	2.000 EA
WD1456A06	CONNECTOR,SIGNAL,M23,17 PIN,MALE,PHOENIX	1.000 EA
15YN0030A008	ROUND HEAD, CROSS RECESS SCREW,M3X8,ZINC	8.000 EA
HA71A0A02	DUST COVER, FOR HDS100 DEP	1.000 EA
HW2512E109	KEY, 6 X 6 X 25MM ROUND ENDED	1.000 EA
LB1577T01	NAMEPLATE,HDS PROTOTYPE	1.000 EA
LB1578	HOT WARING MARK	1.000 EA

Parts List (continued)		
Part Number	Description	Quantity
LB1579	NO KNOCKING MARK	1.000 EA
LB1580	QR LABEL, HDS	1.000 EA
HA21A8Y80	SHAFT PROTECT SLEEVE FOR HDS100,Y80	1.000 EA
HDS100PA0413	MOTOR PACKING GROUP, HDS100-0413	1.000 EA

No performance data has been
assigned to this product.



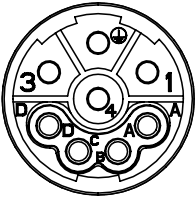


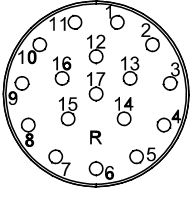
REV. DESC: ADDED HIGH INERTIA TYPES			
REV: B	VERSION: 02	REVISED: 11:39:18 05/15/2018	TDR: 000001069239
MODEL NO. HD100LYA001		REF: -	
BY: CNSESU2	Material: -		

BALDOR

HDS100 LAYOUT.RES/ENC.KEY.OPTIONAL.BRAKE.SEAL

CD2167A03

MOTOR & BRAKE & PTC LEADS			
 WD1456A04 (PLUG SIDE)	PIN	FUNCTION	COLOR
	1	U (R)	BLACK
	2	GROUND (PE)	YELLOW/GREEN
	3	W (T)	BLUE
	4	V (S)	RED
	A	PTC	BLUE BLACK
	B	PTC	BLUE
	C	BRAKE	RED
	D	BRAKE	BLUE

INCREMENTAL ENCODER LEADS						
 WD1456A06 (PLUG SIDE)	PIN	FUNCTION	COLOR	PIN	FUNCTION	COLOR
	1	DC+5V	RED	10	U	BROWN
	2	GND	BLACK	11	\bar{U}	BROWN/BLACK
	3	A	BLUE	12	V	GRAY
	4	\bar{A}	BLUE/BLACK	13	\bar{V}	GRAY/BLACK
	5	B	GREEN	14	W	WHITE
	6	\bar{B}	GREEN/BLACK	15	\bar{W}	WHITE/BLACK
	7	Z	YELLOW	16	-	-
	8	\bar{Z}	YELLOW/BLACK	17		
	9	-	-			

REV. DESC: CORRECTED PTC THERMISTER LEAD COLOR			
REV: C	VERSION: 03	REVISED: 08:59:39 06/23/2017	TDR: 000001025915
CD2167A03	MODEL NO. CD2167A03		REF: -
	BY: CNSESU2	Material: -	

BALDOR

CONNECTION DIAGRAM, POWER & INC. ENCODER

CD2167A03