

# BALDOR® • RELIANCE

## Product Information Packet

# HDS100-0413AGKNN

HDS100-0413A w/Absolute singl-turn (DSL)

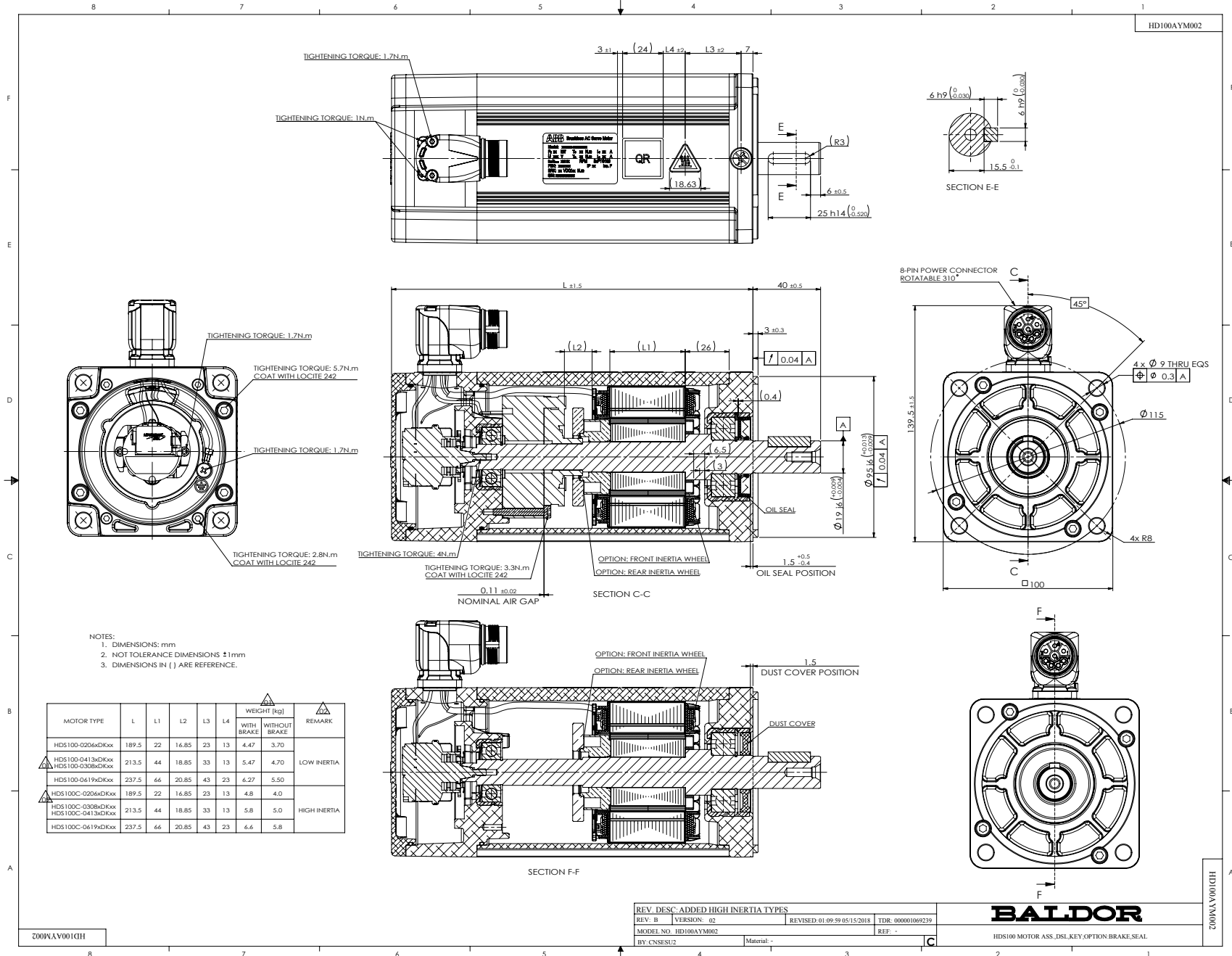
Specs			
Bearing Grease Type:	Polyrex EM		
Dimensional Drawing Numbers:	HD100LYA002		
Nameplate Amps:	6.4		

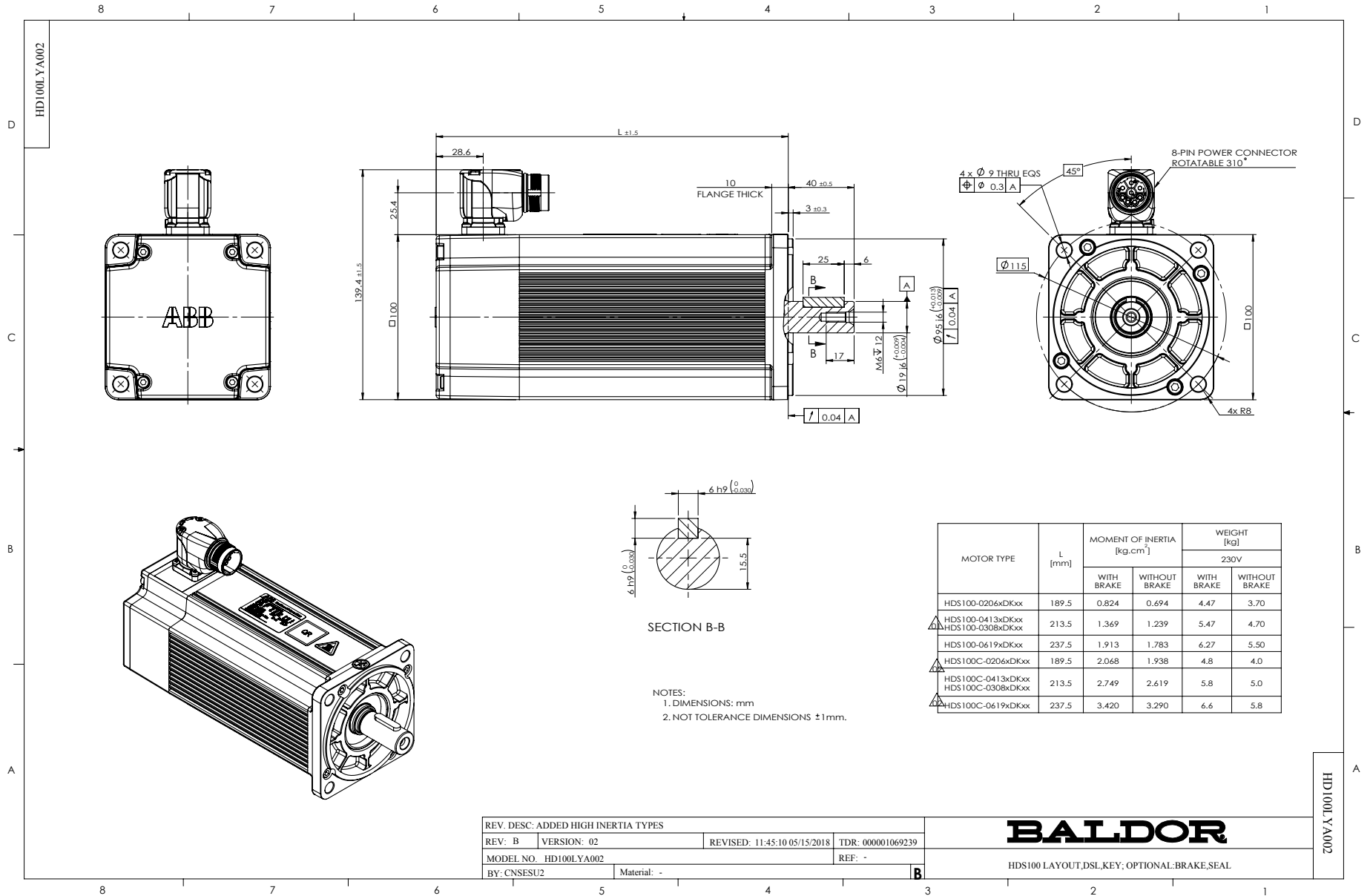
<b>Nameplate LB1577T01</b>									
<b>MODEL:</b>	HDS100-0413AGKNN								
<b>PN</b>	1.3	<b>KW</b>	<b>TO</b>	4.0	<b>N.M</b>	<b>IO</b>	6.4	<b>A</b>	
<b>U</b>	230	<b>V</b>	<b>TP</b>	12.0	<b>N.M</b>	<b>IP</b>	22.0	<b>A</b>	
<b>NN/N MAX</b>	3000/4000			<b>RPM</b>		<b>3XPTC130</b>			
<b>FBK</b>	S.DSL		<b>IP</b>	IP54		<b>INS F</b>			
<b>BRK:</b>		<b>VDC/</b>		<b>N.M</b>					
<b>S/N</b>									

Parts List		
Part Number	Description	Quantity
HD100SA0001A44	STAROR ASSEMBLYHDS100, 44MM STACK,230V	1.000 EA
HD100SH0002A44	SHAFT,ROTOR L44MM, HDS100, DSL	1.000 EA
HD100RA1000A44	ROTOR ASSEMBLY (W/O SHAFT),HDS100,SL=44M	1.000 EA
HW5010C15	CIRCLIPS FOR SHAFT-TYPE A,15,GB/T894.1	1.000 EA
HD100EP3100A02	END PLATE,REAR,MACHINED,HDS100,DSL	1.000 EA
HW5100D35	SPRING WASHER,JB/T7590-D35-H CLASS	1.000 EA
BG6202C02	DEEP GROOVE BALL BEARING,6202-2Z/C3,-30C	1.000 EA
84YN0050J045C	HEX SOCKET HEAD CAP SCREW,M5X45,GB/T70.1	4.000 EA
MJ5004A05CN	#242-21 LOCITE GENERAL PURPOSE MED. STR	0.300 ML
HW5010C20	CIRCLIPS FOR SHAFT-TYPE A,20MM,GB/T 894.	1.000 EA
HD130OE1000G01	SUB-ASSEMBLY, DSL ENCODER, SINGLE-TURN,	1.000 EA
LD2200A60	GRND LEAD ASSY,8" 18AWG,GRN/YEL,M4 RING	1.000 EA
09YN0040A008	SCREW ASSEMBLY,CROSS RECESSED PAN HEAD,S	1.000 EA
HD100CB0001A01	END COVER,FRONT,HDS100,MACHINING	1.000 EA
84YN0040J012	SCREW SOCKET HD M4 X 0.7 X 12MM	4.000 EA
WD1456A04	CONNECTOR,POWER,M23,8 PIN,MALE,PHOENIX C	1.000 EA
WD1456A04A01	CRIMP CONTACT,2MM,PHOENIX,SF-20KP004,FOR	4.000 EA
WD1456A04A02	CRIMP CONTACT,1MM,PHOENIX,SF-6CP2000,FOR	2.000 EA
15YN0030A008	ROUND HEAD, CROSS RECESS SCREW,M3X8,ZINC	4.000 EA
HA71A0A02	DUST COVER, FOR HDS100 DEP	1.000 EA
HW2512E109	KEY, 6 X 6 X 25MM ROUND ENDED	1.000 EA
LB1577T01	NAMEPLATE,HDS PROTOTYPE	1.000 EA
LB1578	HOT WARING MARK	1.000 EA
LB1579	NO KNOCKING MARK	1.000 EA

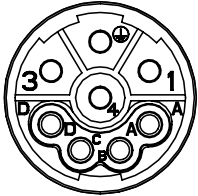
<b>Parts List (continued)</b>		
<b>Part Number</b>	<b>Description</b>	<b>Quantity</b>
LB1580	QR LABEL, HDS	1.000 EA
HA21A8Y80	SHAFT PROTECT SLEEVE FOR HDS100,Y80	1.000 EA
HDS100PA0413	MOTOR PACKING GROUP, HDS100-0413	1.000 EA

No performance data has been  
assigned to this product.





CD2167A02

MOTOR & BRAKE & DSL ENCODER & PTC LEADS			
	PIN	FUNCTION	COLOR
 <p>WD1456A04 (PLUG SIDE)</p>	1	V(S) U (R)	RED BLACK
	2	GROUND (PE)	YELLOW/GREEN
	3	U (R) W (T)	BLACK BLUE
	4	W (T) V (S)	BLUE RED
	A	+U <sub>s</sub> /DSL+/PTC	GRAY
	B	BRAKE GND/DSL-/PTC	RED GREEN
	C	BRAKE	BLUE RED
	D	GND/DSL-/PTC BRAKE	GREEN BLUE

REV. DESC: CHANGED CONNECTOR PIN DEFINITION			
REV: B	VERSION: 02	REVISED: 04:11:40 05/05/2017	TDR: 000001027228
CD2167A02	MODEL NO. CD2167A02		REF: -
	BY: CNSESU2	Material: -	

**BALDOR**

CONNECTION DIAGRAM,POWER & DSL

CD2167A02