

# BALDOR® • RELIANCE

## Product Information Packet

# HDS180-3555BEKNN

HDS180-3555B w/Inc encoder(2500ppr), Key

Specs			
Bearing Grease Type:	Polyrex EM		
Dimensional Drawing Numbers:	HD180LYA001		
Nameplate Amps:	21.5		

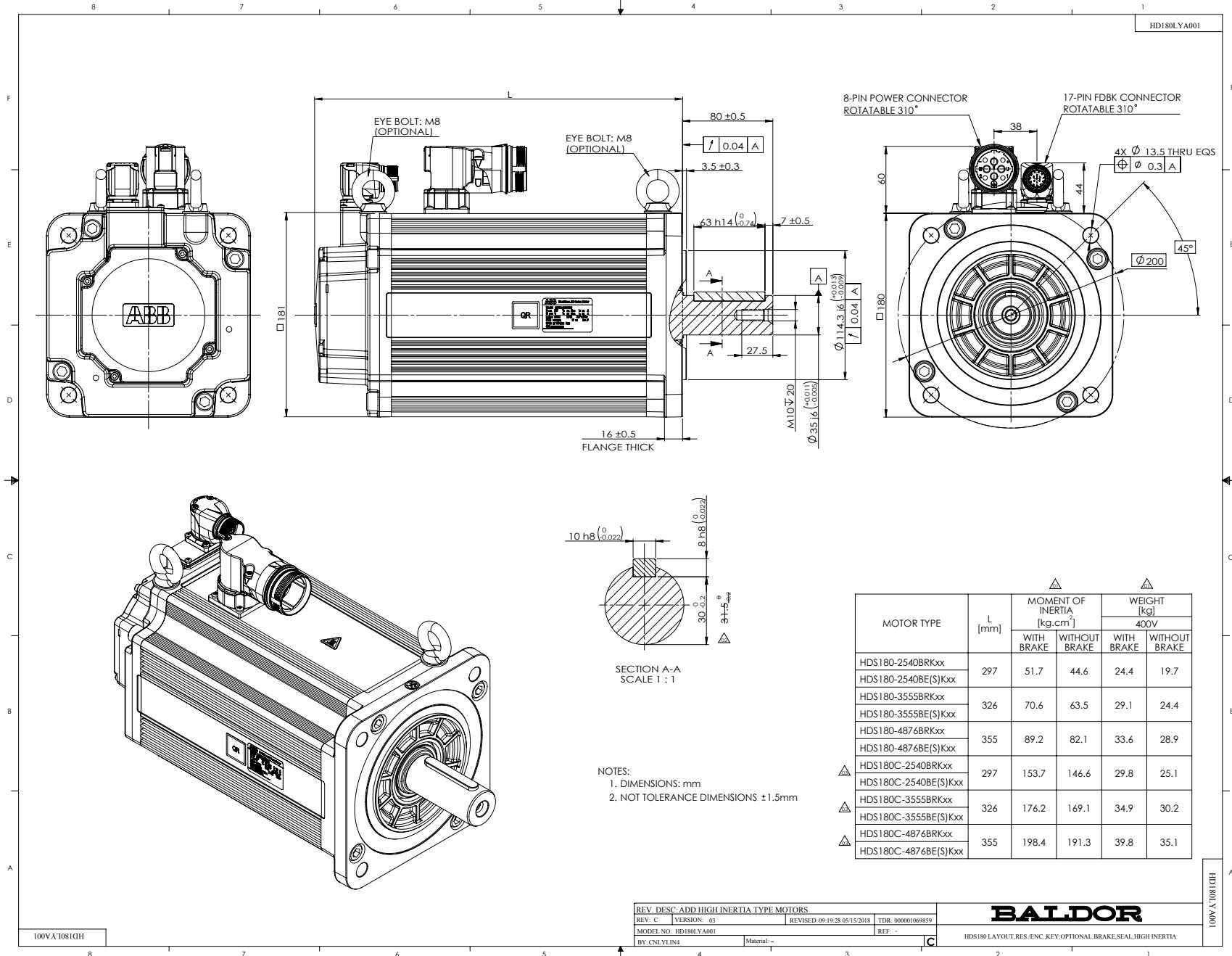
## Nameplate LB1577T01

<b>MODEL:</b>	HDS180-3555BEKNN							
<b>PN</b>	5.5	<b>KW</b>		<b>TO</b>	35.0	<b>N.M</b>	<b>IO</b> 21.5	<b>A</b>
<b>U</b>	400	<b>V</b>		<b>TP</b>	105.0	<b>N.M</b>	<b>IP</b> 70.4	<b>A</b>
<b>NN/N MAX</b>	1500/3500			<b>RPM</b>			<b>3XPTC130</b>	
<b>FBK</b>	ENC			<b>IP</b>	IP54		<b>INS F</b>	
<b>BRK:</b>		<b>VDC/</b>				<b>N.M</b>		
<b>S/N</b>								

Parts List		
Part Number	Description	Quantity
HD180SA0001B87	STAROR ASSEMBLY,HDS180,87MM,400V	1.000 EA
HD180SH0002A87	SHAFT,ROTOR L87MM, HDS180,TAMAGAWA INCR.	1.000 EA
HD180RA1000A87	ROTOR ASSEMBLY (W/O SHAFT),HDS180,87MM	1.000 EA
84YN0060J012C	HEX SOCKET HEAD CAP SCREW,M6X12,GB/T70.1	2.000 EA
MJ5004A05CN	#242-21 LOCITE GENERAL PURPOSE MED. STR	0.100 ML
HD180EP3100A01	END PLATE,REAR,MACHINED,HDS180	1.000 EA
RM1020B04	O-RING,164.8MM IDX2.62MM DIA,NBR,SHORE 7	1.000 EA
HW5100D62	SPRING WASHER,D62,BWW-6305,OCHIAI	3.000 EA
BG6206C10	BEARING,6206-2Z/C3,GJN GREASE,SKF	1.000 EA
84YN0100J035C	M10X35MM SHCS,GB/T70.1,8.8 DEGREE,BLACKE	4.000 EA
MJ5004A05CN	#242-21 LOCITE GENERAL PURPOSE MED. STR	0.400 ML
HW5010C45	CIRCLIPS FOR SHAFT-TYPE A,45MM,GB/T 894.	1.000 EA
HD130OE1000E01	SUB-ASSEMBLY, INCR. ENCODER, HDS130	1.000 EA
LD2200A62	GRND LEAD ASSY,12AWG,GRN/YEL, M6 RING	1.000 EA
09YN0060A012	SCREW ASS,CROSS PAN HEAD,SPRING & PLAIN	1.000 EA
RM1020B05	O-RING,111.5MM IDX2MM DIA,NBR,SHORE 70	1.000 EA
HD180CB0001A01	END COVER,HDS180,MACHINED	1.000 EA
84YN0040J012	SCREW SOCKET HD M4 X 0.7 X 12MM	4.000 EA
WD1456A09	CONNECTOR,POWER,M40, 8 PIN,MALE,ROTORABL	1.000 EA
WD1456A09A01	CRIMP CONTACT,3.6MM,PHOENIX,SM-36KP003,F	4.000 EA
WD1456A09A02	CRIMP CONTACT,2MM,PHOENIX,SF-7PP2000,FOR	2.000 EA
WD1456A09A03	CRIMP CONTACT,2MM,PHOENIX,SF-7RP2000,FOR	2.000 EA
15YN0040A012	ROUND HEAD, CROSS RECESS SCREW,M4X12,ZIN	4.000 EA
WD1456A06	CONNECTOR,SIGNAL,M23,17 PIN,MALE,PHOENIX	1.000 EA

<b>Parts List (continued)</b>		
<b>Part Number</b>	<b>Description</b>	<b>Quantity</b>
HA10B1	COVER PLATE, FOR MOUNTING CONNECTOR	1.000 EA
GS0107	GASKET, NBR RUBBER	1.000 EA
15YN0030A012	ROUND HEAD, CROSS RECESS SCREW, M3X12, ZIN	6.000 EA
HW2511C03	KEY, MATRIC, ROUNDED ENDS, 10X8X63MM	1.000 EA
LB1577T01	NAMEPLATE, HDS PROTOTYPE	1.000 EA
LB1578	HOT WARNING MARK	1.000 EA
LB1579	NO KNOCKING MARK	1.000 EA
LB1580	QR LABEL, HDS	1.000 EA
LB9512	INK RIBBON, W90MM*L300M	0.070 M
HDS180PA3555	MOTOR PACKING GROUP, HDS180-3555	1.000 EA

No performance data has been assigned to this product.



MOTOR TYPE	L [mm]	MOMENT OF INERTIA [kg.cm <sup>2</sup> ]		WEIGHT [kg]	
		WITH BRAKE	WITHOUT BRAKE	WITH BRAKE	WITHOUT BRAKE
HDS180-2540BRKxx	297	51.7	44.6	24.4	19.7
HDS180-2540BE(S)Kxx					
HDS180-3555BRKxx	326	70.6	63.5	29.1	24.4
HDS180-3555BE(S)Kxx					
HDS180-4876BRKxx	355	89.2	82.1	33.6	28.9
HDS180-4876BE(S)Kxx					
△ HDS180C-2540BRKxx	297	153.7	146.6	29.8	25.1
△ HDS180C-2540BE(S)Kxx					
△ HDS180C-3555BRKxx	326	176.2	169.1	34.9	30.2
△ HDS180C-3555BE(S)Kxx					
△ HDS180C-4876BRKxx	355	198.4	191.3	39.8	35.1
△ HDS180C-4876BE(S)Kxx					

REV. DESC. ADD HIGH INERTIA TYPE MOTORS			
REV. C	VERSION: 03	REVISED: 09-19-28 05/15/2018	TDR: 900001069859
MODEL NO. HD180YA001		REF. -	
BY: CNLVLIN4	Material: -		

**BALDOR**

HDS180 LAYOUT.RES./ENC./KEY/OPTIONAL.BRAKE/SEAL/HIGH INERTIA

