

BALDOR® • RELIANCE

Product Information Packet

HDS65-0102AGKNN

HDS65-0102A w/Absolute singl-turn (DSL),

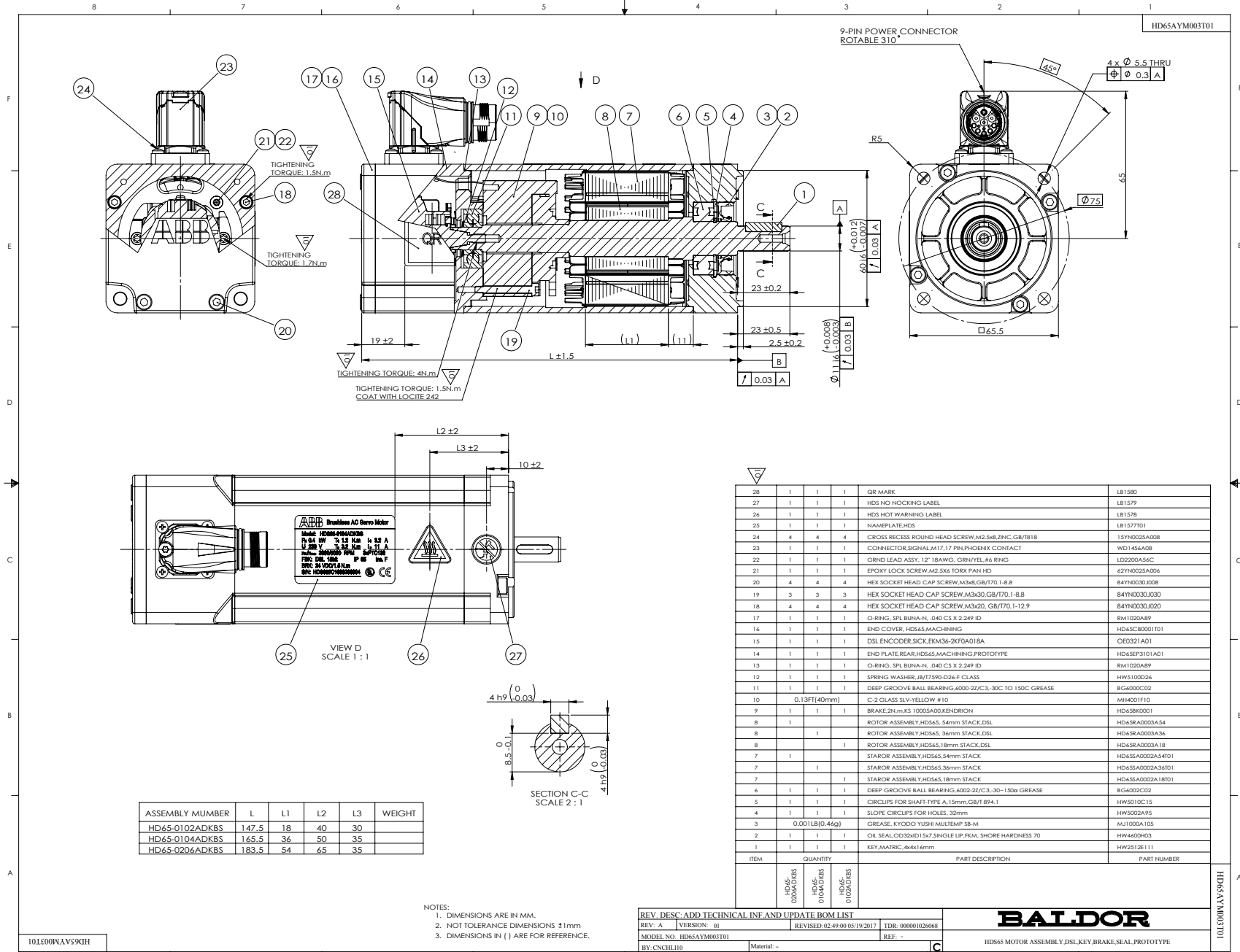
Specs			
Bearing Grease Type:	Polyrex EM		
Dimensional Drawing Numbers:	HD65LYA003		
Nameplate Amps:	1.7		

Nameplate LB1577T01									
MODEL:	HDS65-0102AGKNN								
PN	0.2	KW	TO	0.6	N.M	IO	1.7	A	
U	230	V	TP	1.8	N.M	IP	6.0	A	
NN/N MAX	3000/5000			RPM		3XPTC130			
FBK	S.DSL		IP	IP54		INS F			
BRK:		VDC/		N.M					
S/N									

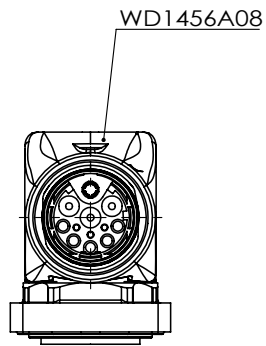
Parts List		
Part Number	Description	Quantity
HD65SA1000A18	STATOR ASSEMBLY,HDS65,18MM,230V	1.000 EA
HD65SH0003A18	SHAFT,ROTOR L18MM, HDS65,DSL	1.000 EA
HD65RA1000A18	ROTOR ASSEMBLY(EXC.SHAFT),HDS65,18MM STA	1.000 EA
HD65EP3100C02	REAR ENDPLATE-MACHINING W/ DSL,HD65	1.000 EA
HW5100D26	SPRING WASHER,JB/T7590-D26 H CLASS	1.000 EA
BG6000C02	DEEP GROOVE BALL BEARING,6000-2Z/C3,-30C	1.000 EA
84YN0030J020	SCREW SOCKET HD M3 X 20MM LONG	4.000 EA
MJ5004A05CN	#242-21 LOCITE GENERAL PURPOSE MED. STR	0.400 ML
HW5010C15	CIRCLIPS FOR SHAFT-TYPE A,15,GB/T894.1	1.000 EA
HD65OE1000G00	SUB-ASSEMBLY, DSL SINGLE-TURN, HDS65	1.000 EA
LD2200A56C	GRND LEAD ASSY, L275MM, AWG18, SRA-51T-3	1.000 EA
62YN0025A006	EPOXY LOCK SCREW,M2.5X6 HEX PAN HD	1.000 EA
HD65CB3100C01	FEEDBACK COVER-MACHINING,HDS65	1.000 EA
84YN0030J008	SCREW, M3 X 08MM SOCKET HEAD CAP	4.000 EA
WD1456A08	CONNECTOR,POWER,M17, 9 PIN,MALE, PHOENIX	1.000 EA
WD1456A08A01	CRIMP CONTACT,1MM,PHOENIX,ST-10KP020,FOR	4.000 EA
WD1456A08A02	CRIMP CONTACT,0.6MM,PHOENIX,ST-06KP010,F	2.000 EA
62YN0025A008	ROUND HEAD, CROSS RECESS SCREW,M2.5X8,ZI	4.000 EA
HW2512E111	KEY,MATRIC,4X4X16MM	1.000 EA
HA71A0A01	DUST COVER, FOR HDS65 DEP	1.000 EA
LB1577T01	NAMEPLATE,HDS PROTOTYPE	1.000 EA
LB1578	HOT WARING MARK	1.000 EA
LB1579	NO KNOCKING MARK	1.000 EA
LB1580	QR LABEL, HDS	1.000 EA

Parts List (continued)		
Part Number	Description	Quantity
HA21A8Y63	SHAFT PROTECT SLEEVE FOR HDS65,Y63	1.000 EA
HDS65PA0102	MOTOR PACKING GROUP, HDS65-0102	1.000 EA

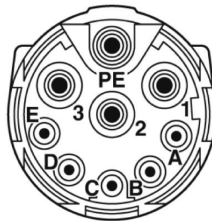
No performance data has been
assigned to this product.



CD2167A06



MOTOR & PTC LEADS		
PIN	FUNCTION	COLOR
1	U (R)	BLACK
2	V (S)	RED
3	W (T)	BLUE
PE	GROUND (PE)	YELLOW/GREEN
A	+U _s /DSL+/PTC	GRAY
B	GND/DSL-/PTC	GREEN
C	BRAKE 24V	RED
D	BRAKE 0V	BLUE
E	-	-



WD1456A08
(INSERTION SIDE)

REV. DESC: REVISE CONNECTOR DEFINITION			
REV: A	VERSION: 01	REVISED: 11:03:33 05/08/2017	TDR: 000001026068
90A71DC CD2167A06	MODEL NO. CD2167A05		REF: -
	BY: CNCHLI10	Material: -	

BALDOR

CONNECTION DIAGRAM,POWER & DSL,HDS65

CD2167A06