

BALDOR® • RELIANCE

Product Information Packet

HDS65-0206ARKNN

HDS65-0206ARKNN,RESOLVER,KEY

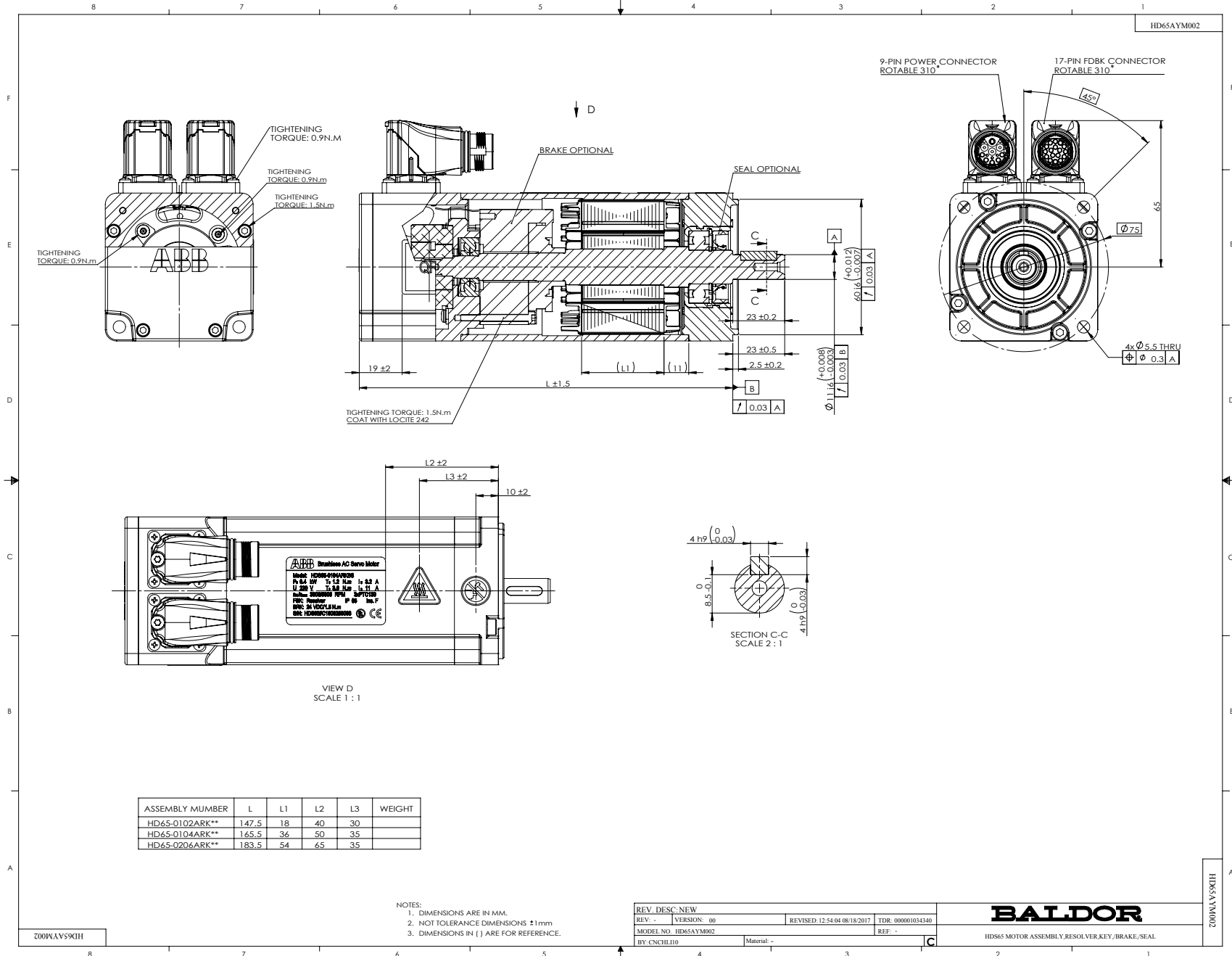
Specs			
Bearing Grease Type:	Polyrex EM		
Dimensional Drawing Numbers:	HD65LYA002		
Nameplate Amps:	4.5		

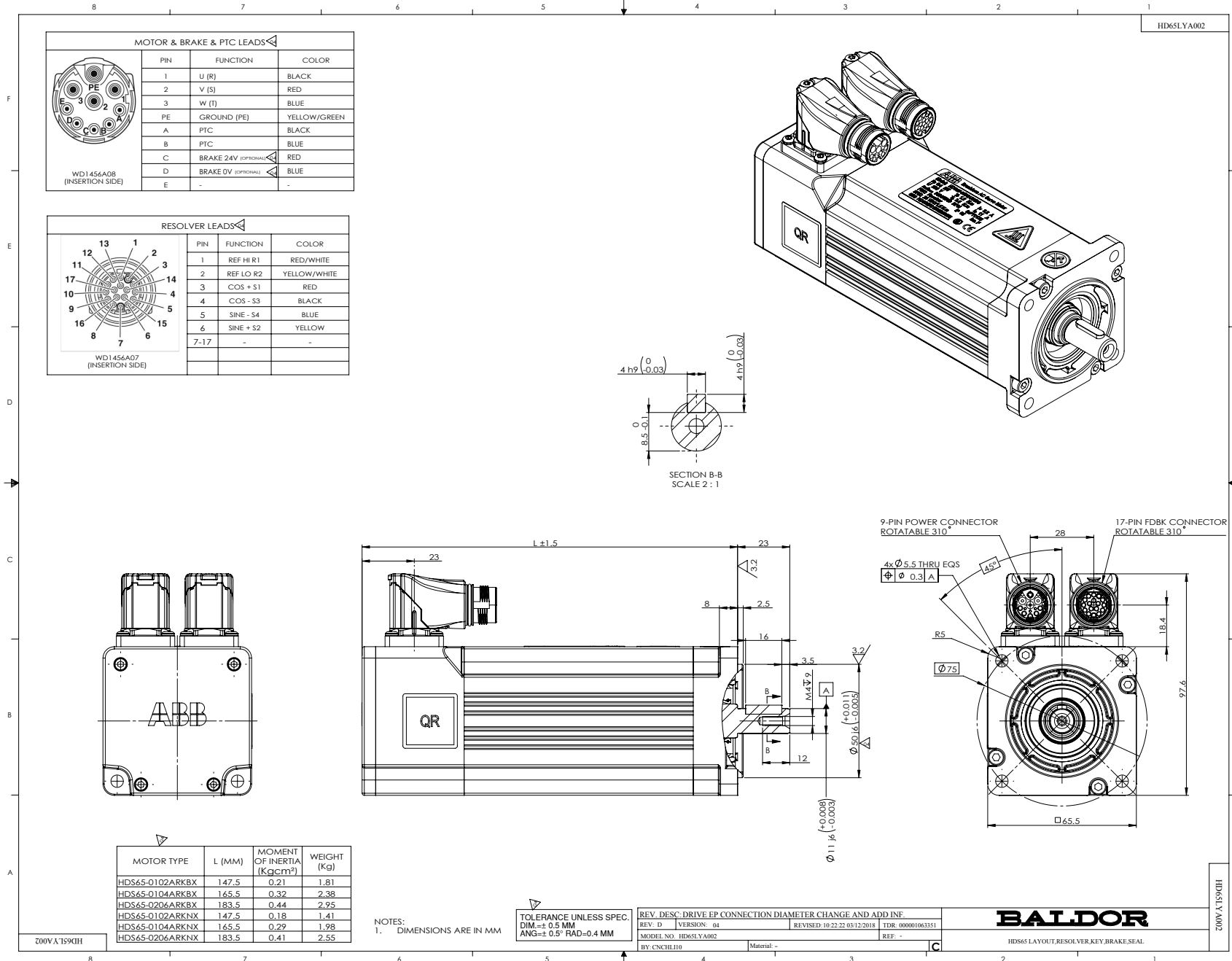
Nameplate LB1577T01									
MODEL:	HDS65-0206ARKNN								
PN	0.6	KW	TO	1.8	N.M	IO	4.5	A	
U	230	V	TP	5.4	N.M	IP	15.0	A	
NN/N MAX	3000/5000			RPM		3XPTC130			
FBK	RES		IP	IP54		INS F			
BRK:		VDC/		N.M					
S/N									

Parts List		
Part Number	Description	Quantity
HD65SA1000A54	STATOR ASSEMBLY,HDS65,54MM,230V	1.000 EA
HD65SH0002A54	SHAFT,ROTOR L54MM, HDS65, RESOLVER	1.000 EA
HD65RA1000A54	ROTOR ASSEMBLY(EXC.SHAFT),HDS65,54MM STA	1.000 EA
HD65EP3100C01	REAR ENDPLATE-MACHINING W/ RESOLVER,HD65	1.000 EA
HW5100D26	SPRING WASHER,JB/T7590-D26 H CLASS	1.000 EA
BG6000C02	DEEP GROOVE BALL BEARING,6000-2Z/C3,-30C	1.000 EA
84YN0030J020	SCREW SOCKET HD M3 X 20MM LONG	4.000 EA
MJ5004A05CN	#242-21 LOCITE GENERAL PURPOSE MED. STR	0.400 ML
HW5010C15	CIRCLIPS FOR SHAFT-TYPE A,15,GB/T894.1	1.000 EA
HD65RF1000R00	SUB-ASSY:RESOLVER,HDS65	1.000 EA
LD2200A56C	GRND LEAD ASSY, L275MM, AWG18, SRA-51T-3	1.000 EA
62YN0025A006	EPOXY LOCK SCREW,M2.5X6 HEX PAN HD	1.000 EA
HD65CB3100C01	FEEDBACK COVER-MACHINING,HDS65	1.000 EA
84YN0030J008	SCREW, M3 X 08MM SOCKET HEAD CAP	4.000 EA
WD1456A08	CONNECTOR,POWER,M17, 9 PIN,MALE, PHOENIX	1.000 EA
WD1456A08A01	CRIMP CONTACT,1MM,PHOENIX,ST-10KP020,FOR	4.000 EA
WD1456A08A02	CRIMP CONTACT,0.6MM,PHOENIX,ST-06KP010,F	2.000 EA
WD1456A07	CONNECTOR,SIGNAL,M17,17 PIN,MALE,PHOENIX	1.000 EA
62YN0025A008	ROUND HEAD, CROSS RECESS SCREW,M2.5X8,ZI	8.000 EA
HW2512E111	KEY,MATRIC,4X4X16MM	1.000 EA
HA71A0A01	DUST COVER, FOR HDS65 DEP	1.000 EA
LB1577T01	NAMEPLATE,HDS PROTOTYPE	1.000 EA
LB1578	HOT WARING MARK	1.000 EA
LB1579	NO KNOCKING MARK	1.000 EA

Parts List (continued)		
Part Number	Description	Quantity
LB1580	QR LABEL, HDS	1.000 EA
HA21A8Y63	SHAFT PROTECT SLEEVE FOR HDS65,Y63	1.000 EA
HDS65PA0206	MOTOR PACKING GROUP, HDS65-0206	1.000 EA

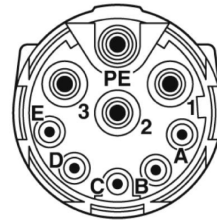
No performance data has been
assigned to this product.





CD2167A05

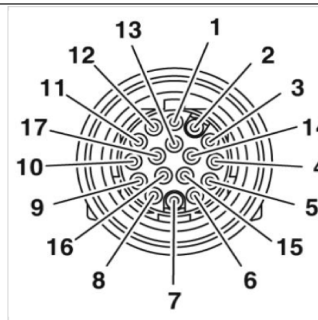
MOTOR & PTC LEADS



WD1456A08
(INSERTION SIDE)

PIN	FUNCTION	COLOR
1	U (R)	BLACK
2	V (S)	RED
3	W (T)	BLUE
PE	GROUND (PE)	YELLOW/GREEN
A	PTC	BLACK
B	PTC	BLUE
C	BRAKE 24V	RED
D	BRAKE 0V	BLUE
E	-	-

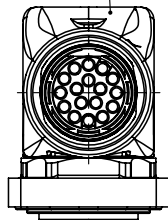
RESOLVER LEADS



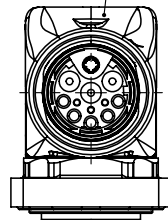
WD1456A07
(INSERTION SIDE)

PIN	FUNCTION	COLOR
1	REF HI R1	RED/WHITE
2	REF LO R2	YELLOW/WHITE
3	COS + S1	RED
4	COS - S3	BLACK
5	SINE - S4	BLUE
6	SINE + S2	YELLOW
7-17	-	-

WD1456A07



WD1456A08



REV. DESC: REVISE PTC CABLE COLOR.

REV: B VERSION: 02 REVISED: 03:06:47 07/06/2017 TDR: 000001034340

CD2167A05

MODEL NO. CD2167A05

REF: -

BY: CNCHL110 Material: -

BALDOR

CONNECTION DIAGRAM,POWER & RESOLVER,HDS65

CD2167A05