

BALDOR® • RELIANCE 

Product Information Packet

IDXM7566T-C

60HP, 1780RPM, 3PH, 60HZ, 364T, A36062M, TEFC

Part Detail							
Revision:	G	Status:	PRD/A	Change #:		Proprietary:	No
Type:	AC	Elec. Spec:	A36WG1207	CD Diagram:	416820-002	Mfg Plant:	
Mech. Spec:		Layout:	616512-504	Poles:	04	Created Date:	11-17-2014
Base:		Eff. Date:	04-24-2018	Leads:	3#4,6#6		

Specs			
Catalog Number:	IDXM7566T-C	Duty Rating:	CONT
Enclosure:	TEFC	Feedback Device:	NO FEEDBACK
Frame:	364T	Heater Indicator:	No Heater
Frame Material:	Iron	Insulation Class:	F
Output @ Frequency:	60.000 HP @ 60 HZ	Inverter Code:	Inverter Ready
Synchronous Speed @ Frequency:	1800 RPM @ 60 HZ	KVA Code:	G
Voltage @ Frequency:	460.0 V @ 60 HZ	Lifting Lugs:	Standard Lifting Lugs
	230.0 V @ 60 HZ	Motor Lead Quantity/Wire Size:	3 @ 4 AWG
XP Class and Group:	CLI GP C,D; CLII GP F,G	Motor Type:	A36062M
XP Division:	Division I	Mounting Arrangement:	F1
Agency Approvals:	CCSA US	Power Factor:	87
	CSA	Product Family:	General Industrial
	CSA EEV	Pulley End Bearing Type:	Ball
	UL	Pulley Face Code:	Standard
Auxillary Box:	No Auxillary Box	Shaft Ground Indicator:	No Shaft Grounding
Base Indicator:	Rigid	Shaft Rotation:	Reversible
Bearing Grease Type:	Polyrex EM (-20F +300F)	Shaft Slinger Indicator:	Shaft Slinger
Constant Torque Speed Range:	15-60	Speed Code:	Single Speed

Current @ Voltage:	68.000 A @ 460.0 V	Motor Standards:	NEMA
	136.000 A @ 230.0 V	Starting Method:	Direct on line
Design Code:	B	Thermal Device - Bearing:	NONE (OLD)
Drip Cover:	No Drip Cover	Thermal Device - Winding:	Normally Closed Thermostat
		XP Temp Code:	T3C

Nameplate NP2496L

MOBIL POLYREX EM

Nameplate 000613006PC		
CLASS I GROUP	C D X	NO. <input type="text"/>
CLASS II GROUP	F G X	
OPERATING TEMP CODE	T3C <input type="text"/>	

Nameplate 000901002AAA
SUITABLE FOR OPERATION ON VPWM INVERTER
EQUIPPED WITH IGBT DEVICES AND CAPABLE OF
CARRIER FREQUENCY OF 2 KHZ OR HIGHER

Nameplate NP3140L										
SPEC NO.	A36-5945-1207			CAT.NO.	IDXM7566T-C			FRAME	364T	
HP	60	VOLTS	230/460		PHASE	3	DESIGN	B	TYPE	P
RPM	1780	AMPS	136/68		HZ	60	AMB	40	SF	1.00
DRIVE END BEARING	65BC03J30X			DUTY	CONT		INSUL.CLASS	F		
OPP D.E. BEARING	65BC03J30X			ENCL	TEFC	CODE	G			
SF	1.15	WK2	12.6		MAG CUR	40.2/20.1		RPM MAX	3600	
CT HZ	15-60		VT HZ	6-60		CHP HZ	60-90		NEMA-NOM-EFF	95
SER.NO.	CL I,ZONE 1,GR IIA IIB,T3 VPWM INVERTER							MOTOR WEIGHT		

Parts List		
Part Number	Description	Quantity
SA290525	SA A36-5945-1207	1.000 EA
RA276680	RA A36-5945-1207	1.000 EA
421948032	LABEL, MYLAR	1.000 EA
NP2496L	MOTOR LUBE NAMEPLATE	1.000 EA
LB1073	ALUM XP CAUTION LABEL	1.000 EA
000692000VD	LABEL WARNING	1.000 EA
000613006PC	N/P U/L (REL QTY 500)	1.000 EA
000901002AAA	N/P BLANK (RELEASE QTY 1,500)	1.000 EA
NP3140L	INVERTER DUTY, SS, CC, CSA-C US, CSA EEV	1.000 EA
609158001B	SLGR - 360	1.000 EA
603284001S	SLGR - 360	1.000 EA
087793060CK	BRKT 360 087793050WCB	1.000 EA
415072001B	CLAMP	1.000 EA
415030051AX	BUSH - 360	1.000 EA
078559001A	+FANCV - 360	1.000 EA
034180012DA	KEY 1X4X1/4X1-1/2 L	1.000 EA
078548001K	FAN KB 100/30 (70) 360	1.000 EA
004824015A	GREASE POLYREX EM	0.540 LB
032018008AK	HHCS 1/4-20X1 PLATED	4.000 EA
032018018CK	HHCS 3/8-16X2-1/4 PLTD.	2.000 EA
415096002A	CPLG 1/8 HEX TYPE	1.000 EA
604923009R	SLGR - 360	1.000 EA
410700004F	WSHR	1.000 EA
034017016AB	LCKW 1/2" PLATED	4.000 EA

Parts List (continued)		
Part Number	Description	Quantity
034017012AB	LCKW 1/4 STD. PLATED	4.000 EA
032130020DB	HSHCS 1/2-13X2-1/2 PLTD.	4.000 EA
034017014AB	LCKW 3/8 STD. PLATED	2.000 EA
034530056AC	P/NIP 1/8X7L GALV-365	1.000 EA
032620012HD	HSSS 8-32X3/8 304S.S.	2.000 EA
034690002AB	PPLG 1/4" PLTD.	1.000 EA
034690002AB	PPLG 1/4" PLTD.	1.000 EA
087793060CK	BRKT 360 087793050WCB	1.000 EA
032018018CK	HHCS 3/8-16X2-1/4 PLTD.	2.000 EA
604923009R	SLGR - 360	1.000 EA
034017016AB	LCKW 1/2" PLATED	4.000 EA
034017014AB	LCKW 3/8 STD. PLATED	2.000 EA
032620012HD	HSSS 8-32X3/8 304S.S.	2.000 EA
034530020AB	P/NIP 1/8X2-1/2 PLTED	1.000 EA
415096002A	CPLG 1/8 HEX TYPE	1.000 EA
415030051AX	BUSH - 360	1.000 EA
032130020DB	HSHCS 1/2-13X2-1/2 PLTD.	4.000 EA
16CB1001A01	CONDUIT BOX MACH GRP C MTRS 16CB1001	1.000 EA
032130014CB	HSHCS 3/8-16X1-3/4 PLTD.	4.000 EA
034017014AB	LCKW 3/8 STD. PLATED	4.000 EA
16CB1501A01	CONDUIT BOX LID MACH.GRP C MTRS 16CB1501	1.000 EA
418150003A	GREASE FITTING CAP	1.000 EA
032130012EB	HSHCS 5/8-11X1-1/2 PLTD.	8.000 EA
034017018AB	LCKW 5/8"	8.000 EA

Product Information Packet: IDXM7566T-C - 60HP,1780RPM,3PH,60HZ,364T,A36062M,TEFC

035000001A	ALFTG 1/8" 1610-BL	1.000 EA
WD1000B92	T&B TTC2, GROUND CONNECTOR	1.000 EA
406099000A	PLUG - FAN COVER 320-440	1.000 EA
406055001C	GRFTG	1.000 EA
406055001B	GRFTG	1.000 EA
035000001A	ALFTG 1/8" 1610-BL	1.000 EA
418150003A	GREASE FITTING CAP	1.000 EA
MG1025G05	WILKOFAS, 789.227, MED. GRAY CHAR. MET.	0.250 GA
033775004EA	DRSCR #6-1/4 304 S.S.	8.000 EA
034180034HA	KEY 5/8X5/8X4-1/4 L	1.000 EA
HW1000A32	5/16 FL WASHER WIDE, ID=.344, OD=1.125	3.000 EA
032509020C	CARRIAGE BOLT - 360	3.000 EA
14PA1000	PACKAGING 314 GROUP COMBINED PRINT	1.000 EA
402558000BBA	DRAIN-FITTING	1.000 EA
402558000BBA	DRAIN-FITTING	1.000 EA

REL. S.O.	FRAME	HP	TYPE	PHASE/HERTZ	RPM	VOLTS
	364T	60	P	3/60	1780	230/460
AMPS	DUTY	AMB °C/INSUL.	S.F.	NEMA DESIGN	CODE LETTER	ENCL.
136/68	CONT	40/F	1.00	B	G	TEFC
E/S	ROTOR	TEST S.O.	TEST DATE	STATOR RES. @25 °C OHMS (BETWEEN LINES)		
492281	418141035YE	---	---	.0277/.110		

PERFORMANCE


LOAD	HP	AMPERES	RPM	POWER FACTOR %	EFFICIENCY %
NO LOAD	0	20.1	1800	4.67	0
1/4	15.0	25.8	1795	58.6	93.0
2/4	30.0	37.5	1791	78.7	95.2
3/4	45.0	51.9	1786	85.0	95.3
4/4	60.0	68.0	1781	87.0	95.0
5/4	75.0	85.1	1775	87.5	94.3

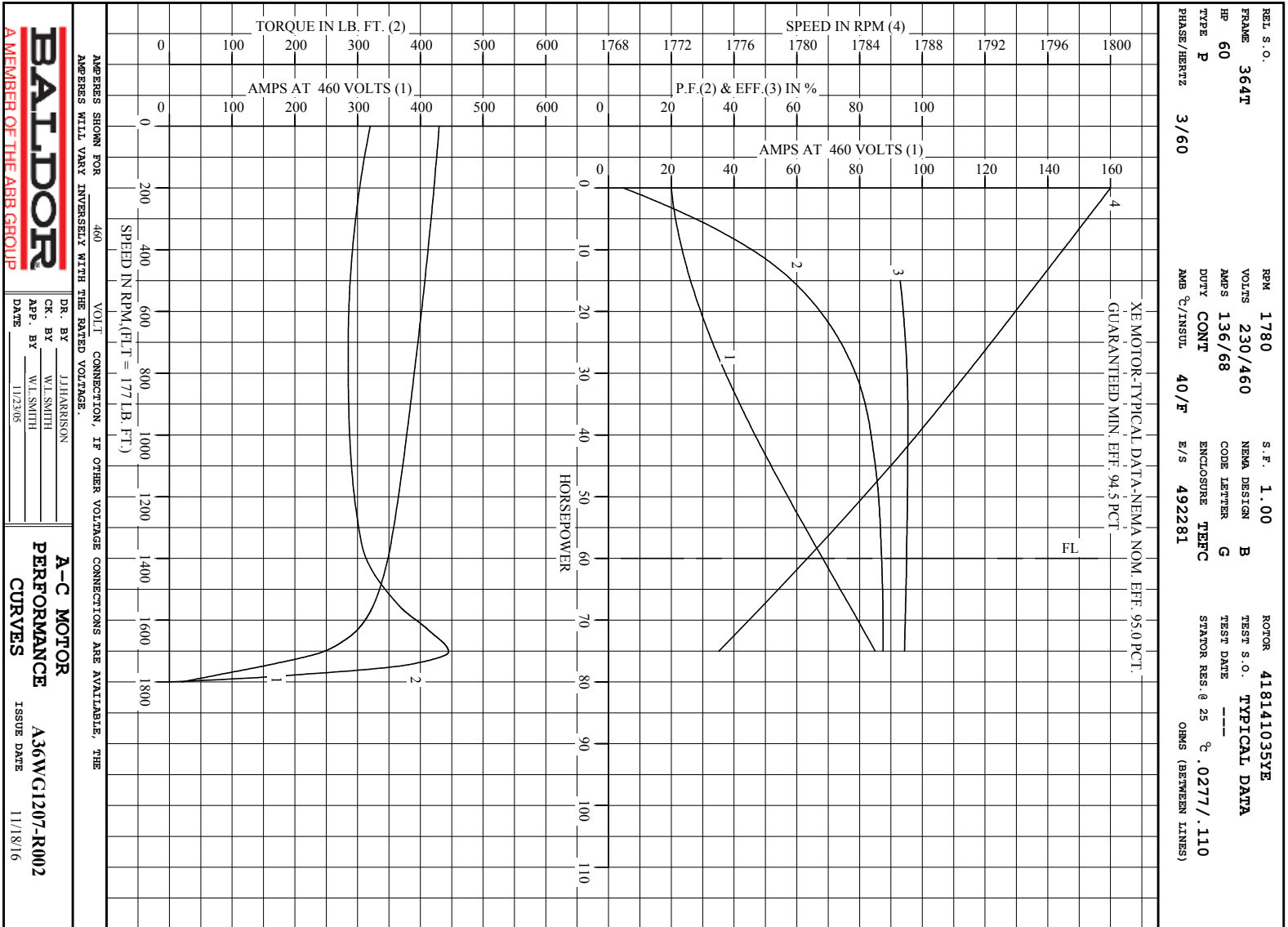
SPEED TORQUE

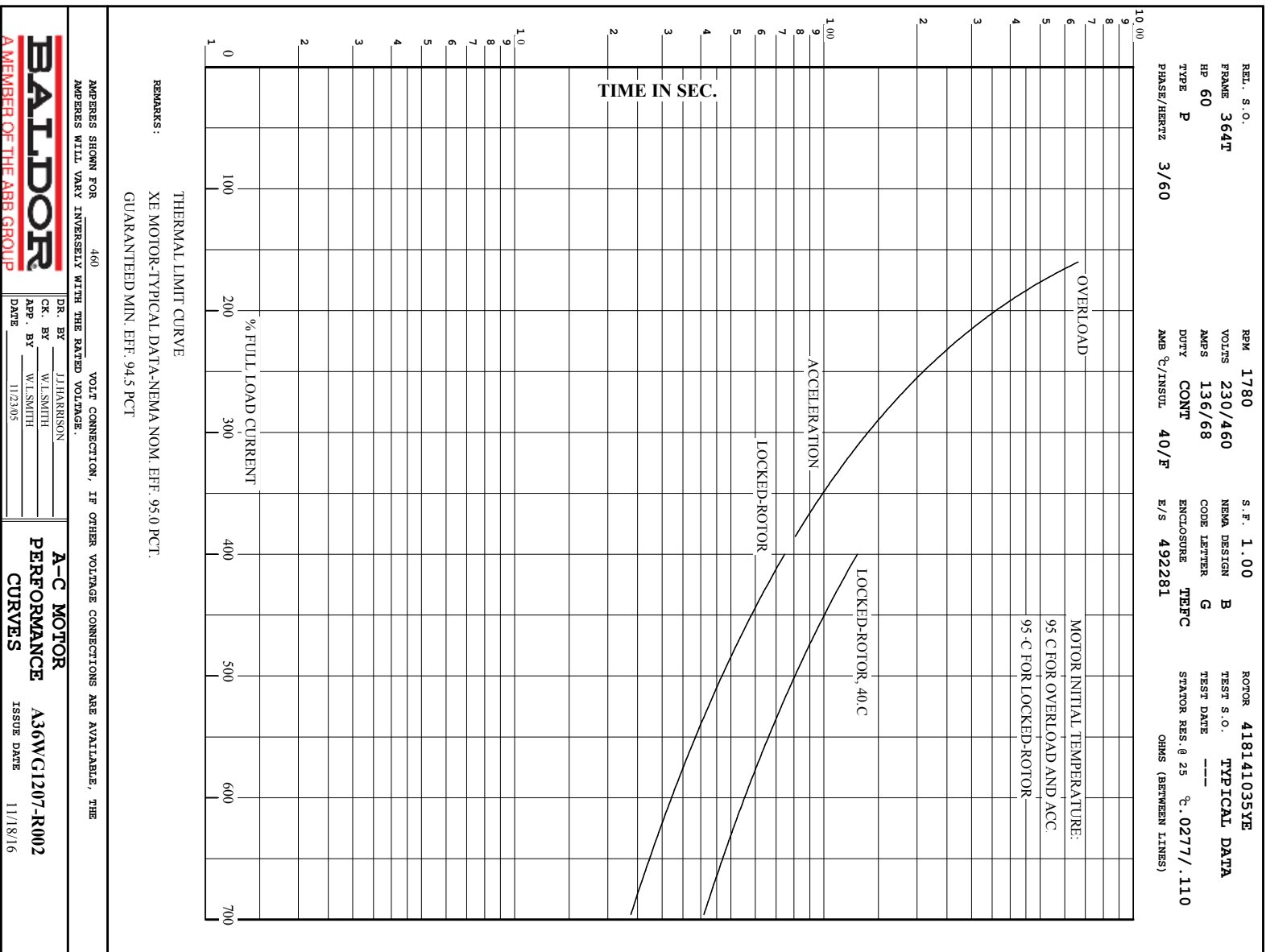
	RPM	TORQUE % FULL LOAD	TORQUE LB.-FT.	AMPERES
LOCKED ROTOR	0	181	320	430
PULL UP	720	161	285	395
BREAKDOWN	1703	251	445	244
FULL LOAD	1781	100	177	68.0

AMPERES SHOWN FOR 460. VOLT CONNECTION. IF OTHER VOLTAGE CONNECTIONS ARE AVAILABLE, THE AMPERES WILL VARY INVERSELY WITH THE RATED VOLTAGE

REMARKS: TYPICAL DATA
 XE MOTOR-TYPICAL DATA-NEMA NOM. EFF. 95.0 PCT.
 GUARANTEED MIN. EFF. 94.5 PCT

 <p>A MEMBER OF THE ABB GROUP</p>	DR. BY	J. J. HARRISON	<p>A-C MOTOR PERFORMANCE DATA</p> <p>A36WG1207-R002</p> <p>ISSUE DATE 11/18/16</p>
	CR. BY	W. L. SMITH	
	APP. BY	W. L. SMITH	
	DATE	11/23/05	





DUTY MASTER ALTERNATING CURRENT MOTORS

616512-504

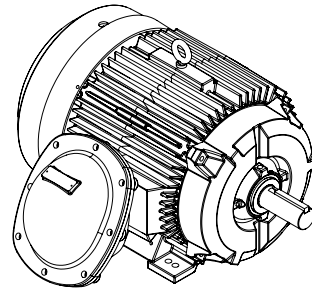
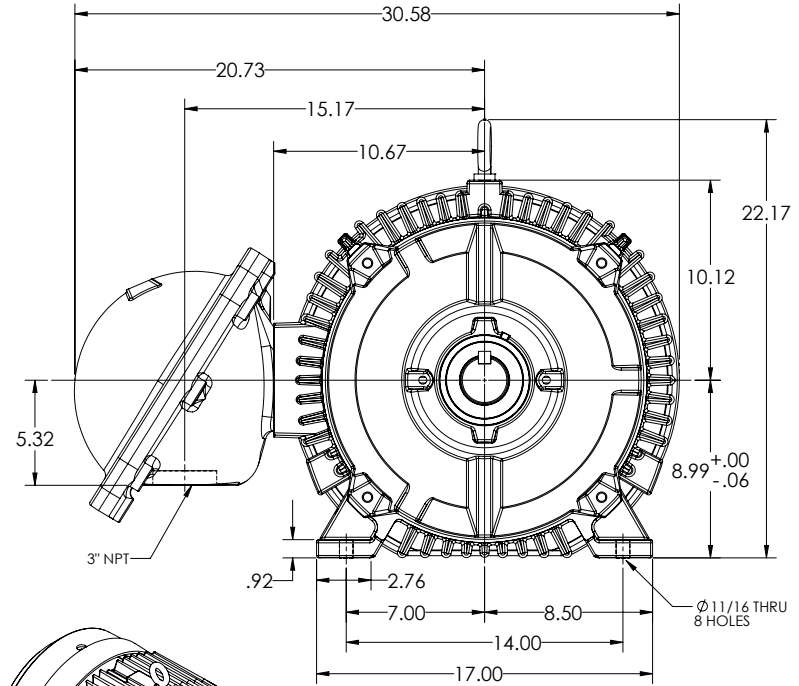
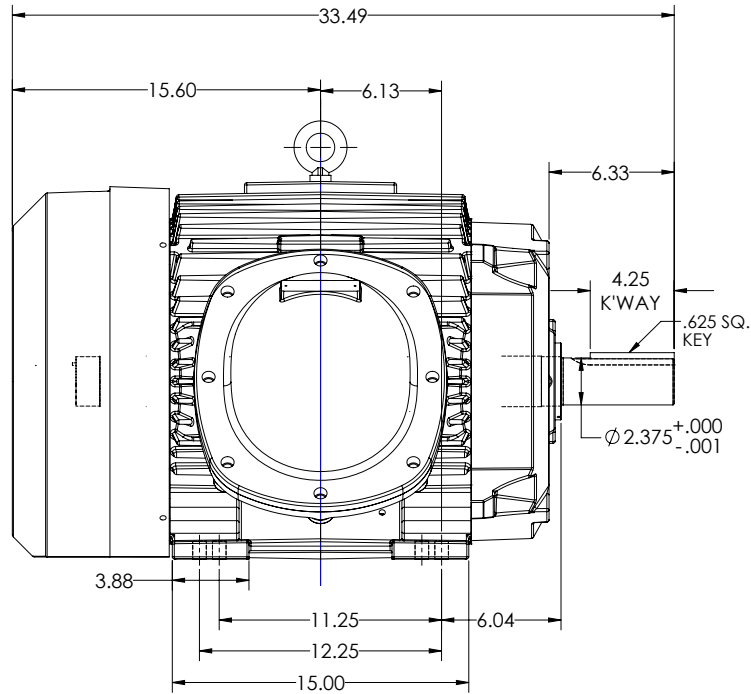
SQUIRREL-CAGE INDUCTION

ENCLOSURE: TOTALLY ENCLOSED

FRAME 365T
INCLUDES 364T FRAME MOUNTING HOLES

COOLING: FAN-COOLED

MOUNTING: FOOT



DIMENSIONS ARE IN INCHES

CUSTOMER IS RESPONSIBLE FOR DETERMINING THAT MOTOR PERFORMANCE IS SUITABLE IN THE APPLICATION.

SHEET NUMBER
1 OF 1

P05-215919

IF MOUNTING CLEARANCE DETAILS ARE REQUIRED, CONSULT FACTORY.
MAXIMUM PERMISSIBLE SHAFT RUNOUT WHEN MEASURED AT END OF
STANDARD SHAFT EXTENSION IS .001" T.I.R.

REV. DESC: UPDATE D/S TO SHOW 3\"/>

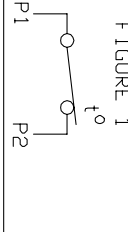
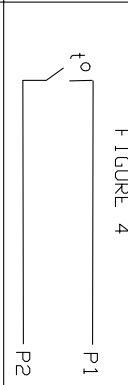
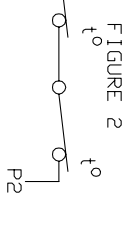
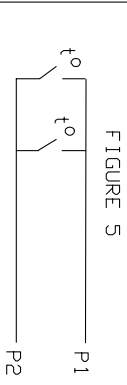
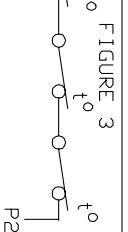
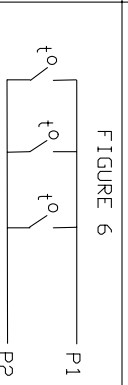
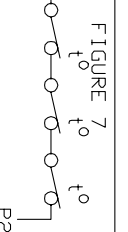
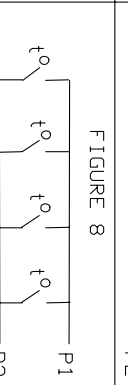
BALDOR

E365T 6313 FCXP W/BOLT ON COND BOX CL. 1 GR. C.D. CL. 2 GR. F.G

616512-504

CONNECTION DIAGRAM ACCESSORIES

MOTOR WINDING THERMOSTATS	
CONTACTS _____ @ _____ °C	
FIGURE NUMBER _____	
CONTACT RATING	
VOLTS	CONTINUOUS AMPERES
110-120	3.0
220-240	1.5
440-480	0.75
550-600	0.60
	INRUSH AMPERES
	30
	15
	7.5
	6.0

NORMALLY CLOSED	THERMOSTATS	NORMALLY OPEN
 <p>FIGURE 1</p>		 <p>FIGURE 4</p>
 <p>FIGURE 2</p>		 <p>FIGURE 5</p>
 <p>FIGURE 3</p>		 <p>FIGURE 6</p>
 <p>FIGURE 7</p>		 <p>FIGURE 8</p>

CUSTOMER _____ CUSTOMER ORDER NO. _____ S.D. NO. _____

418174-006

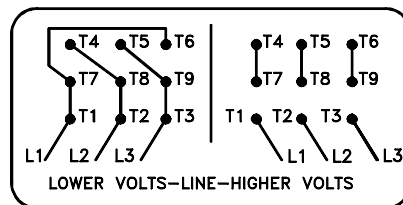
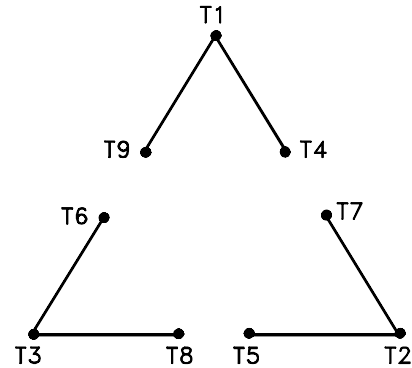
418174-006

REV. DESC: LOADED TO BUS		TDR: 000000570390
REV. LTR: A	VERSION: 01	BY: RAGDRF
FILE: \RAG\00013\849	REVISED: 10:16:21 12/07/2010	
MTL: -		

BALDOR
A-C MOTOR CONNECTION ACCESSORIES
SH 1 of 1

416820-002

A-C MOTOR
 CONNECTION DIAGRAM
 STANDARD 9 LEAD DELTA-CONNECTED



(N.P. 1575-B)

416820-002

REV. DESC: LOADED TO BUS, C/R 335225		
REV. LTR: -	VERSION: 00	TDR: 000000538207
FILE: \MGA\00000\661	REVISED: 10:47:51 04/30/2010	
MTL: -	BY: RAGRA	

BALDOR

CONN DIAG - STANDARD 9 LEAD, DELTA-CONNECTED

SH 1 of 1

Marketing maintained PDF of MN408:

<http://www.baldor.com/support/Literature/Load.ashx/MN408?ManNumber=MN408>

Marketing maintained PDF of MN416:

<http://www.baldor.com/support/Literature/Load.ashx/MN416?ManNumber=MN416>