

BALDOR • RELIANCE

Customer information packet

L1430TM

5HP, 1725RPM, 1PH, 60HZ, 184T, 3634LC, ODTF

Class - None

Division - Not Applicable

Specifications

Enclosure	ODTF
Frame	184T
Frame Material	Steel
Frequency	60.00 Hz
Haz Area Class and Group	None
Haz Area Division	Not Applicable
Motor Letter Type	Cap Start, Cap Run
Output @ Frequency	5.000 HP @ 60 HZ
Phase	1
Synchronous Speed @ Frequency	1800 RPM @ 60 HZ
Voltage @ Frequency	230.0 V @ 60 HZ
Agency Approvals	UR CSA
Ambient Temperature	40 °C
Auxillary Box	No Auxillary Box
Auxillary Box Lead Termination	None
Base Indicator	Rigid
Bearing Grease Type	Polyrex EM (-20F +300F)
Blower	None
Current @ Voltage	24.000 A @ 230.0 V 25.500 A @ 208.0 V
Design Code	L
Drip Cover	Drip Cover
Duty Rating	CONT
Efficiency @ 100% Load	80.0 %
Electrically Isolated Bearing	Not Electrically Isolated
Feedback Device	NO FEEDBACK
Front Face Code	Standard
Front Shaft Indicator	None
Heater Indicator	No Heater
High Voltage Full Load Amps	24.0 a
Insulation Class	F

Part detail

Revision	X
Type	AC
Mech. spec.	36K761
Base	
Status	PRD/A
Elec. spec.	36WGX262
Layout	36LYK761
Eff. date	05-10-2024
CD Diagram	CD0002A02
Poles	04
Leads	2#10 A PH,3#16 B&J
Proprietary	False
Created date	01-01-0001

Inverter Code	Not Inverter
KVA Code	H
Lifting Lugs	No Lifting Lugs
Locked Bearing Indicator	No Locked Bearing
Motor Lead Exit	Ko Box
Motor Lead Quantity/Wire Size	2 @ 10 AWG, A PH
Motor Lead Termination	Flying Leads
Motor Standards	NEMA
Motor Type	3634LC
Mounting Arrangement	F1
Number of Poles	4
Overall Length	16.55 IN
Power Factor	86
Product Family	General Purpose
Pulley End Bearing Type	Ball
Pulley Face Code	Standard
Pulley Shaft Indicator	Standard
Rodent Screen	None
Service Factor	1.15
Shaft Diameter	1.125 IN
Shaft Extension Location	Pulley End
Shaft Ground Indicator	No Shaft Grounding
Shaft Rotation	Reversible
Shaft Slinger Indicator	No Slinger
Speed	1725 rpm
Speed Code	Single Speed
Starting Method	Direct on line
Thermal Device - Bearing	None
Thermal Device - Winding	Do Not Use
Vibration Sensor Indicator	No Vibration Sensor
Winding Thermal 1	Manual Thermal Overload
Winding Thermal 1 Location	KO
Winding Thermal 2	None

Nameplate

NP1257L									
CAT.NO.	L1430TM								
SPEC.	36K761X262G1								
HP	5								
VOLTS	230								
AMP	24								
RPM	1725								
FRAME	184T		HZ	60		PH	1		
SER.F.	1.15	CODE	H	DES	L	CL	F		
NEMA-NOM-EFF	80	PF	86						
RATING	40C AMB-CONT								
CC									
DE	6206	ODE	6205						
ENCL	ODTF	SN							

Accessories

Part number	Description	Multiplier
36-3403	C FACE KIT	A8
36EP1405A09SP	D-FLANGE KIT	

AC Induction Motor Performance Data

Record # 20866

Typical performance - not guaranteed values

Winding: 36WGX262-R003		Type: 3634LC		Enclosure: ODTF	
Nameplate Data			230 V, 60 Hz: Single Voltage Motor		
Rated Output (HP)	5	Full Load Torque	15.2 LB-FT		
Volts	230	Start Configuration	direct on line		
Full Load Amps	24	Breakdown Torque	35 LB-FT		
R.P.M.	1725	Pull-up Torque	29 LB-FT		
Hz	60	Locked-rotor Torque	36 LB-FT		
NEMA Design Code	L	Starting Current	137 A		
Service Factor (S.F.)	1.15	No-load Current	8.2 A		
NEMA Nom. Eff.	80	Line-line Res. @ 25°C	0.494 Ω A Ph 1.73 Ω B Ph		
Rating - Duty	40C AMB-CONT	Temp. Rise @ Rated Load	84°C		
S.F. Amps		Temp. Rise @ S.F. Load	102°C		

Load Characteristics 230 V, 60 Hz, 5 HP

% of Rated Load	25	50	75	100	125	150	S.F.
Power Factor	63	79	87	90	91	90	0
Efficiency	63.7	76.5	80.3	80.6	78.7	74.5	0
Speed	1784	1768	1751	1730	1704	1667	0
Line amperes	10.1	13.4	17.5	22.5	28.5	36.3	26.1

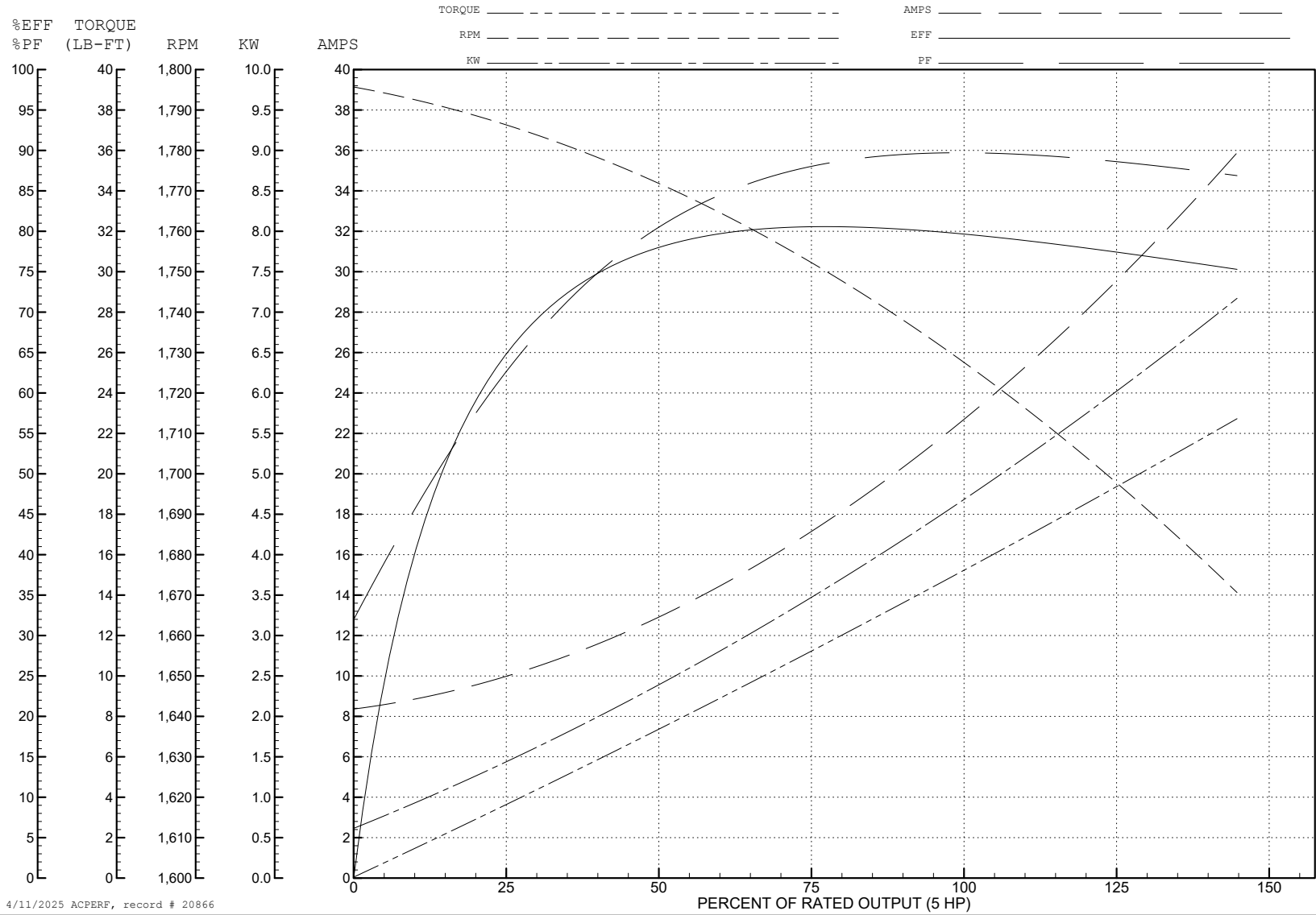
ABB Motors and Mechanical Inc.

WINDING # 36WX262

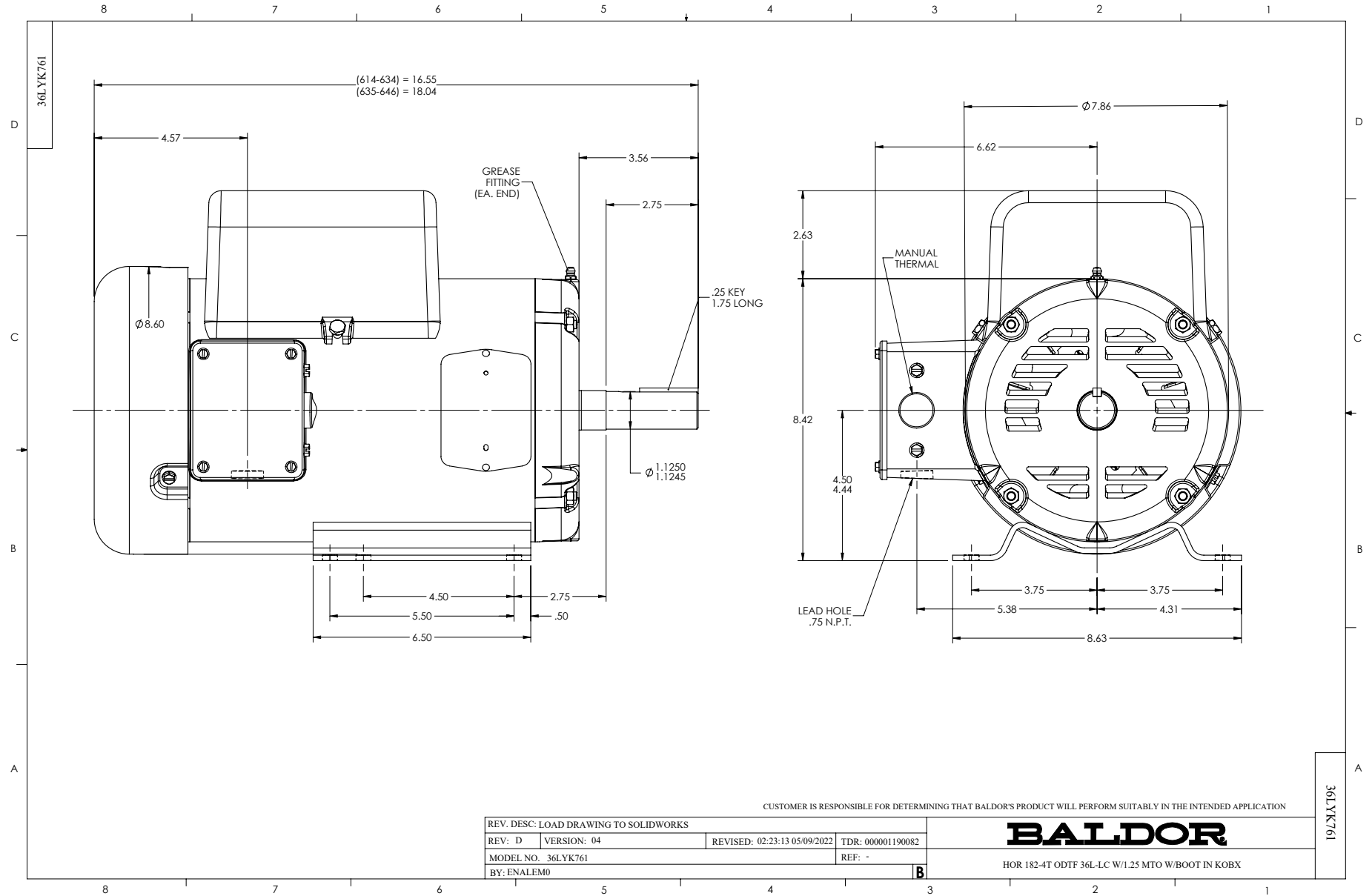
Typical performance - not guaranteed values.

5 HP 1 PH 60 HZ 1725 RPM 230 V 3634LC

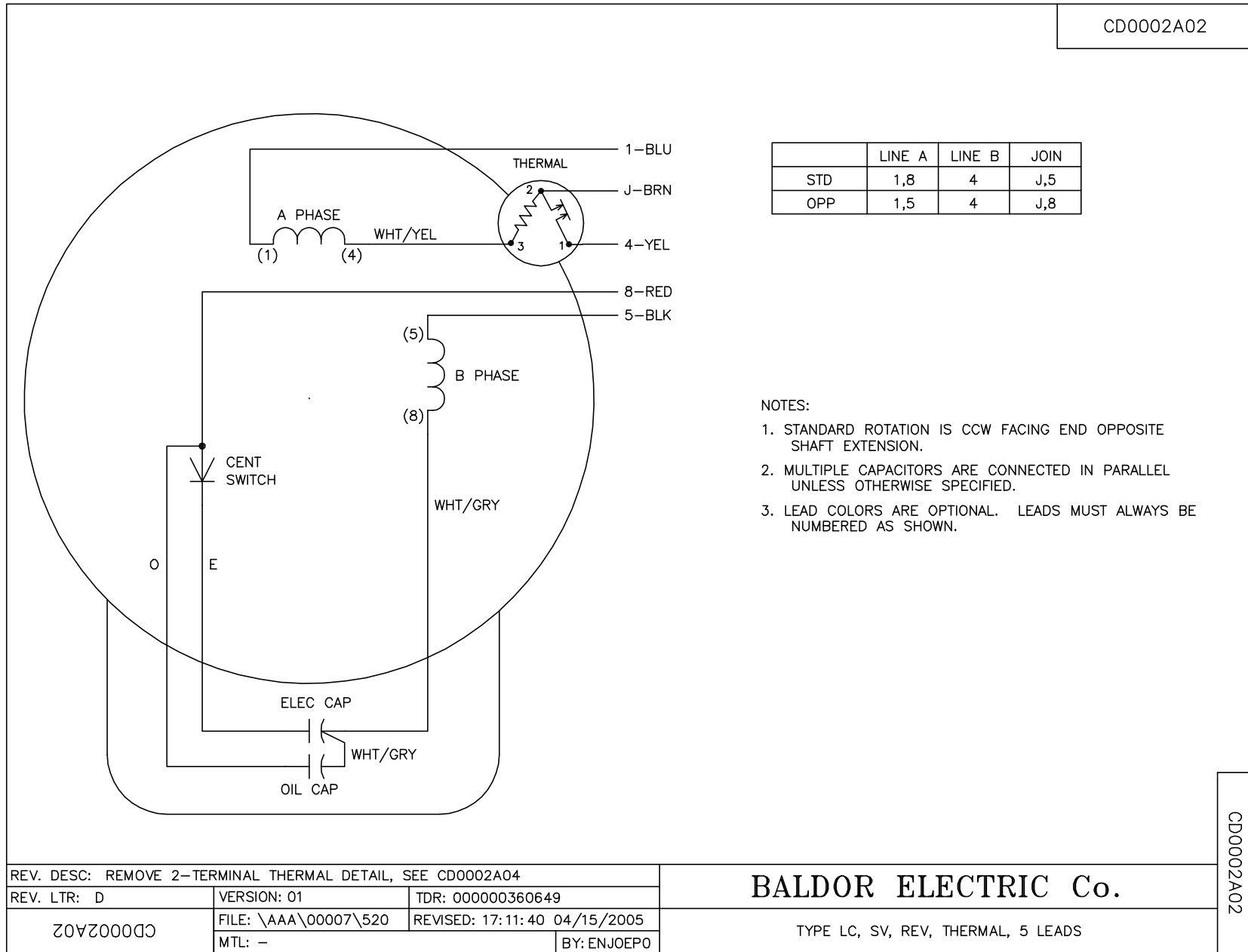
TORQUES (LB-FT): PO=35 PU=29 LR=36 LRA=137



4/11/2025 ACPERF, record # 20866



CD0002A02



	LINE A	LINE B	JOIN
STD	1,8	4	J,5
OPP	1,5	4	J,8

- NOTES:
1. STANDARD ROTATION IS CCW FACING END OPPOSITE SHAFT EXTENSION.
 2. MULTIPLE CAPACITORS ARE CONNECTED IN PARALLEL UNLESS OTHERWISE SPECIFIED.
 3. LEAD COLORS ARE OPTIONAL. LEADS MUST ALWAYS BE NUMBERED AS SHOWN.

REV. DESC: REMOVE 2-TERMINAL THERMAL DETAIL, SEE CD0002A04		
REV. LTR: D	VERSION: 01	TDR: 000000360649
CD0002A02	FILE: \AAA\00007\520	REVISED: 17:11:40 04/15/2005
	MTL: -	BY: ENJOEPO

BALDOR ELECTRIC Co.

TYPE LC, SV, REV, THERMAL, 5 LEADS

CD0002A02