

BALDOR • RELIANCE

Customer information packet

L3609T

3HP, 1725RPM, 1PH, 60HZ, 184T, 3634LC, TEFC, F1

Class - None

Division - Not Applicable

Specifications

Enclosure	TEFC
Frame	184T
Frame Material	Steel
Frequency	60.00 Hz
Haz Area Class and Group	None
Haz Area Division	Not Applicable
Motor Letter Type	Cap Start, Cap Run
Output @ Frequency	3.000 HP @ 60 HZ
Phase	1
Synchronous Speed @ Frequency	1800 RPM @ 60 HZ
Voltage @ Frequency	115.0 V @ 60 HZ 230.0 V @ 60 HZ
Agency Approvals	CSA UR
Ambient Temperature	40 °C
Auxillary Box	No Auxillary Box
Auxillary Box Lead Termination	None
Base Indicator	Rigid
Bearing Grease Type	Polyrex EM (-20F +300F)
Blower	None
Current @ Voltage	28.000 A @ 115.0 V 15.500 A @ 208.0 V 14.000 A @ 230.0 V
Design Code	L
Drip Cover	No Drip Cover
Duty Rating	CONT
Efficiency @ 100% Load	78.0 %
Electrically Isolated Bearing	Not Electrically Isolated
Feedback Device	NO FEEDBACK
Front Face Code	Standard
Front Shaft Indicator	None
Heater Indicator	No Heater

Part detail

Revision	AK
Type	AC
Mech. spec.	36E004
Base	
Status	PRD/A
Elec. spec.	36WGY129
Layout	36LYE004
Eff. date	01-13-2025
CD Diagram	CD0055
Poles	04
Leads	4#14 A PH,2#16 B PH
Proprietary	False
Created date	01-01-0001

High Voltage Full Load Amps	14.0 a
Insulation Class	F
Inverter Code	Not Inverter
KVA Code	K
Lifting Lugs	No Lifting Lugs
Locked Bearing Indicator	No Locked Bearing
Motor Lead Exit	Ko Box
Motor Lead Quantity/Wire Size	4 @ 14 AWG, A PH
Motor Lead Termination	Flying Leads
Motor Standards	NEMA
Motor Type	3634LC
Mounting Arrangement	F1
Number of Poles	4
Overall Length	16.56 IN
Power Factor	85
Product Family	General Purpose
Pulley End Bearing Type	Ball
Pulley Face Code	Standard
Pulley Shaft Indicator	Standard
Rodent Screen	None
Service Factor	1.00
Shaft Diameter	1.125 IN
Shaft Extension Location	Pulley End
Shaft Ground Indicator	No Shaft Grounding
Shaft Rotation	Reversible
Shaft Slinger Indicator	No Slinger
Speed	1725 rpm
Speed Code	Single Speed
Starting Method	Direct on line
Thermal Device - Bearing	None
Thermal Device - Winding	None
Vibration Sensor Indicator	No Vibration Sensor
Winding Thermal 1	None
Winding Thermal 2	None

Nameplate

NP1256L									
CAT.NO.	L3609T								
SPEC.	36E04Y129								
HP	3								
VOLTS	115/230								
AMP	28/14								
RPM	1725								
FRAME	184T		HZ	60		PH	1		
SER.F.	1.00	CODE	K	DES	L	CLASS	F		
NEMA-NOM-EFF	78	PF	85						
RATING	40C AMB-CONT								
CC									
DE	6206		ODE	6205					
ENCL	TEFC	SN							

Accessories

Part number	Description	Multiplier
36-3301	C FACE KIT	A8
36EP1304A62SP	FLANGE MTD ENDPLATE 182-4TD -ENCL (LESS	A8

AC Induction Motor Performance Data

Record # 11204

Typical performance - not guaranteed values

Winding: 36WGY129-R001		Type: 3634LC	Enclosure: TEFC		
Nameplate Data			230 V, 60 Hz: High Voltage Connection		
Rated Output (HP)	3	Full Load Torque	9 LB-FT		
Volts	115/230	Start Configuration	direct on line		
Full Load Amps	28/14	Breakdown Torque	23 LB-FT		
R.P.M.	1725	Pull-up Torque	18 LB-FT		
Hz	60 Phase	1	Locked-rotor Torque	29 LB-FT	
NEMA Design Code	L	KVA Code	K	Starting Current	105 A
Service Factor (S.F.)			1	No-load Current	6.35 A
NEMA Nom. Eff.	78	Power Factor	85	Line-line Res. @ 25°C	0.688 Ω A Ph 0.628 Ω B Ph
Rating - Duty		40C AMB-CONT		Temp. Rise @ Rated Load	86°C

Load Characteristics 230 V, 60 Hz, 3 HP

% of Rated Load	25	50	75	100	125	150
Power Factor	53	71	81	86	88	89
Efficiency	63.3	76.2	80.4	81.4	80.7	78.8
Speed	1787	1775	1762	1747	1730	1709
Line amperes	7.25	9	11.3	14	17.1	20.8

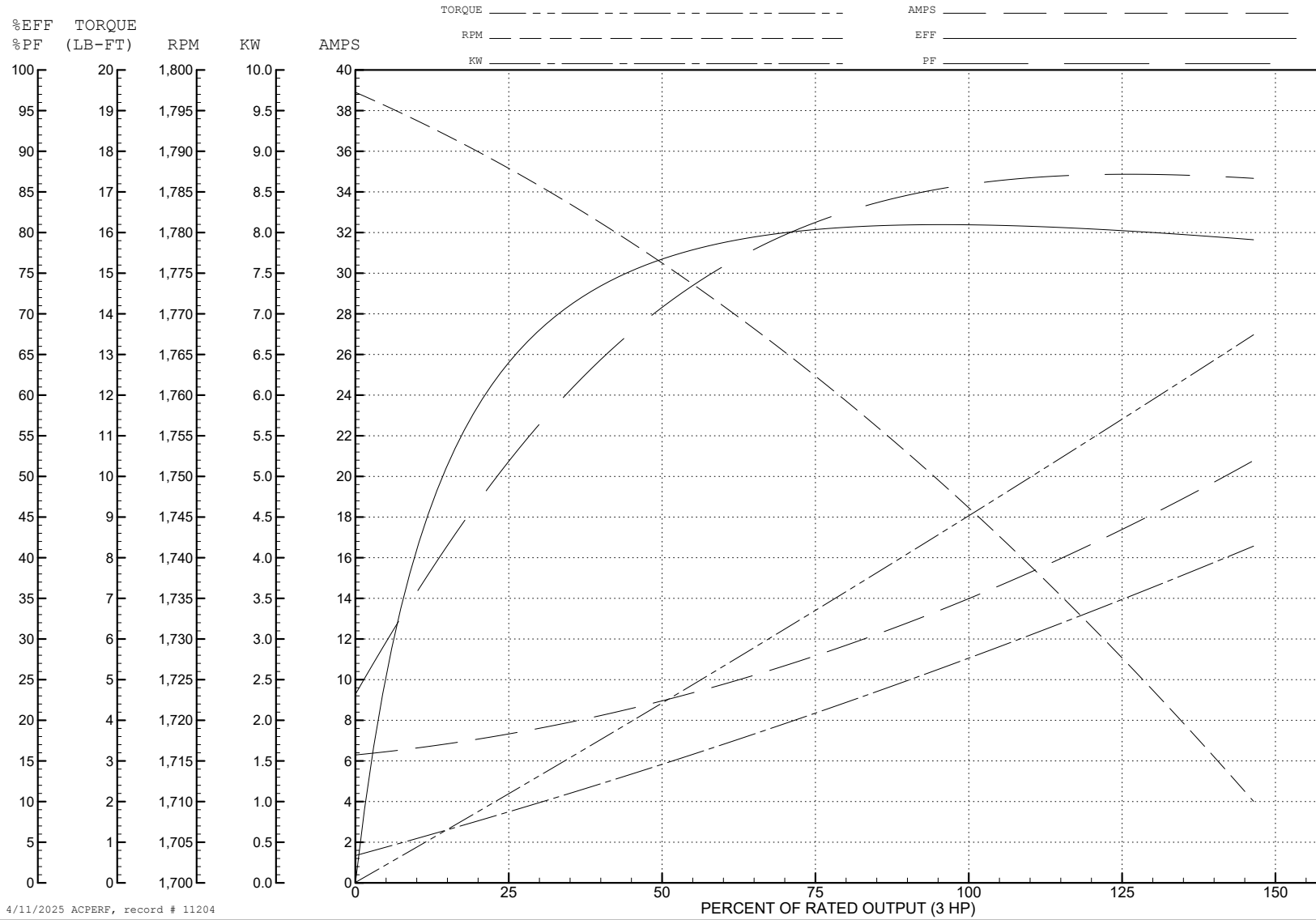
ABB Motors and Mechanical Inc.

WINDING # 36WGY129

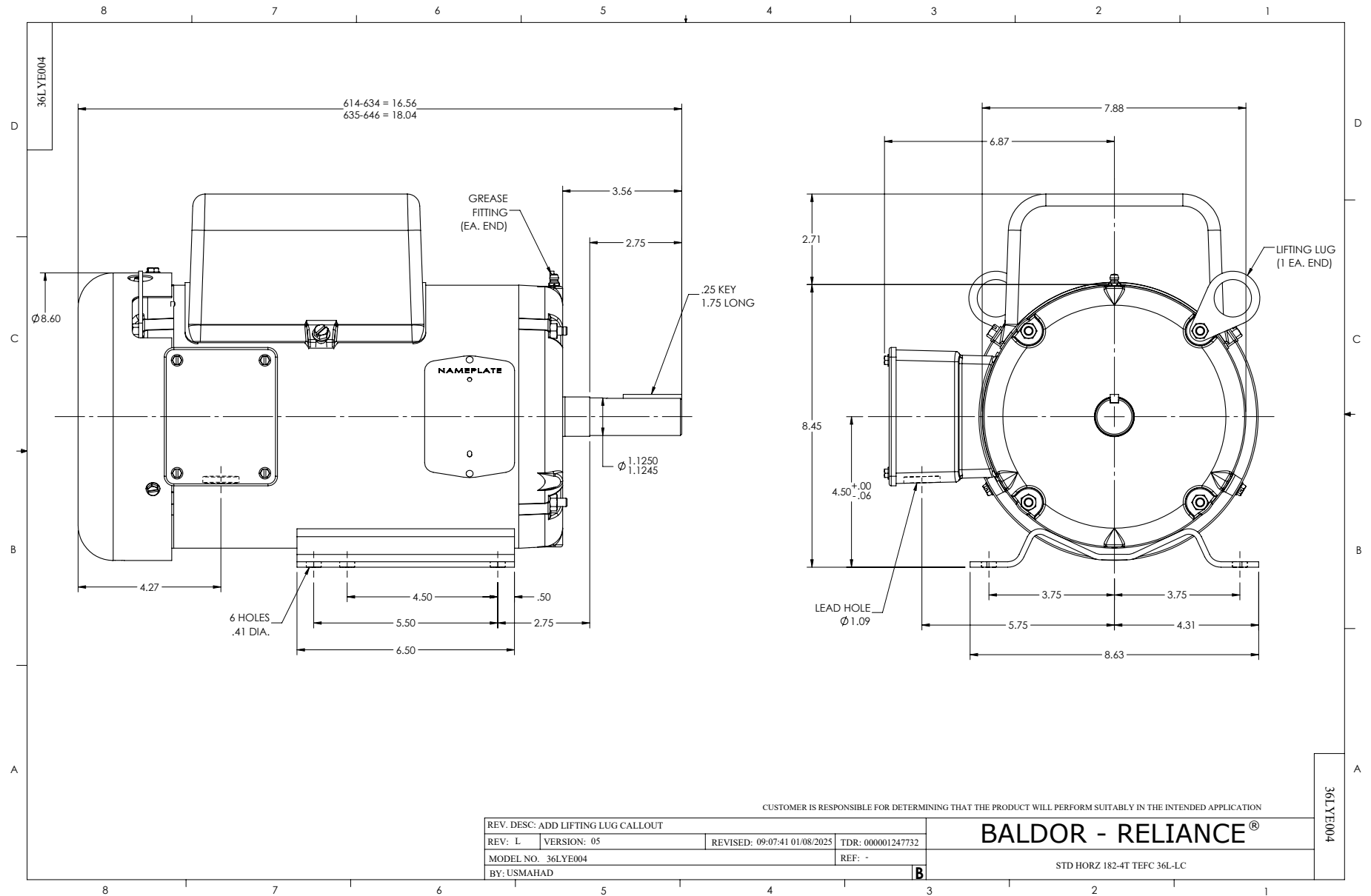
Typical performance - not guaranteed values.

3 HP 1 PH 60 HZ 1725 RPM 230 V 3634LC

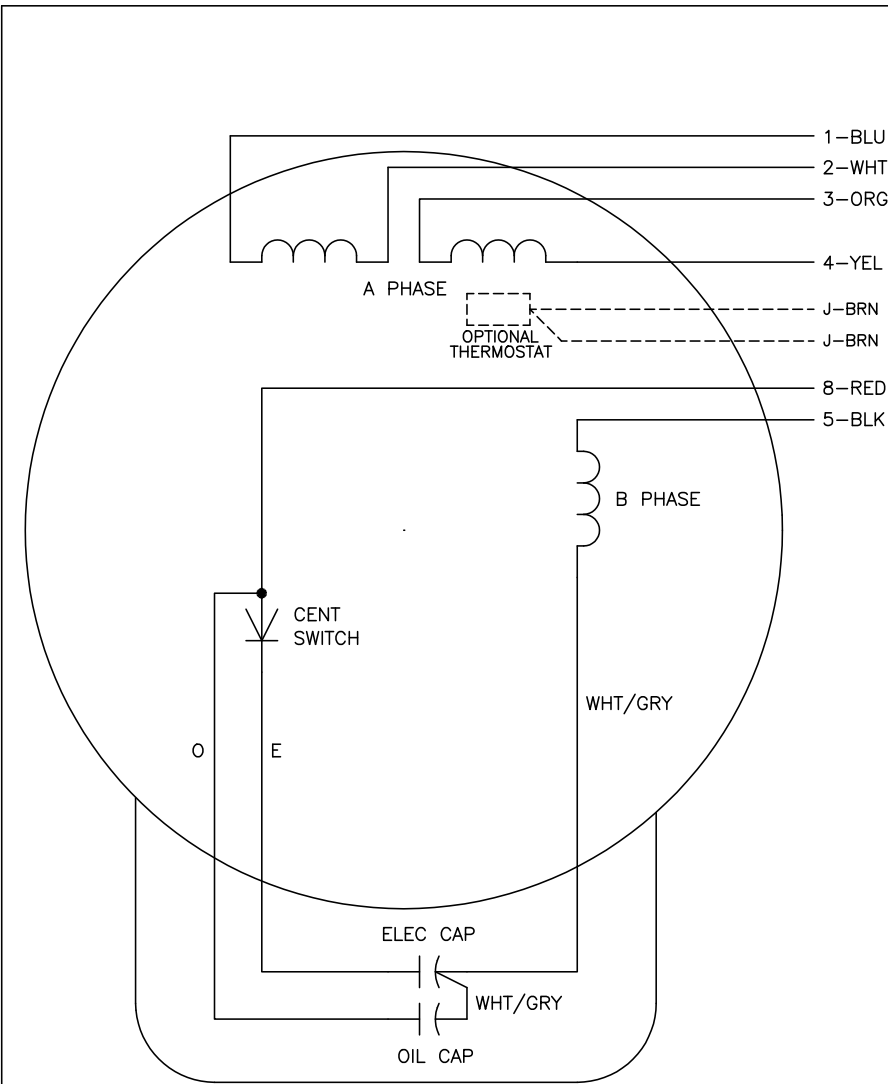
TORQUES (LB-FT): PO=23 PU=18 LR=29 LRA=105



4/11/2025 ACPERF, record # 11204



CD0055



	LINE A	LINE B	JOIN
HIGH STD	1	4,5	2,3,8
HIGH OPP	1	4,8	2,3,5
LOW STD	1,3,8	2,4,5	-
LOW OPP	1,3,5	2,4,8	-

NOTES:

1. STANDARD ROTATION IS CCW FACING END OPPOSITE SHAFT EXTENSION.
2. OPTIONAL THERMOSTAT IS PROVIDED WHEN SPECIFIED.
3. MULTIPLE CAPACITORS ARE CONNECTED IN PARALLEL UNLESS OTHERWISE SPECIFIED.
4. LEAD COLORS ARE OPTIONAL. LEADS MUST ALWAYS BE NUMBERED AS SHOWN.

CD0055

REV. DESC: REVISE TO SHOW OPTIONAL COLORS			
REV. LTR: D	BY: JLP	REVISED: 04/08/99 1:17	TDR: 0178636
SS0000		FILE: AAA00007414	MDL: -
		MTL: -	

BALDOR ELECTRIC Co.

TYPE LC, DV, REV, 6 LEADS