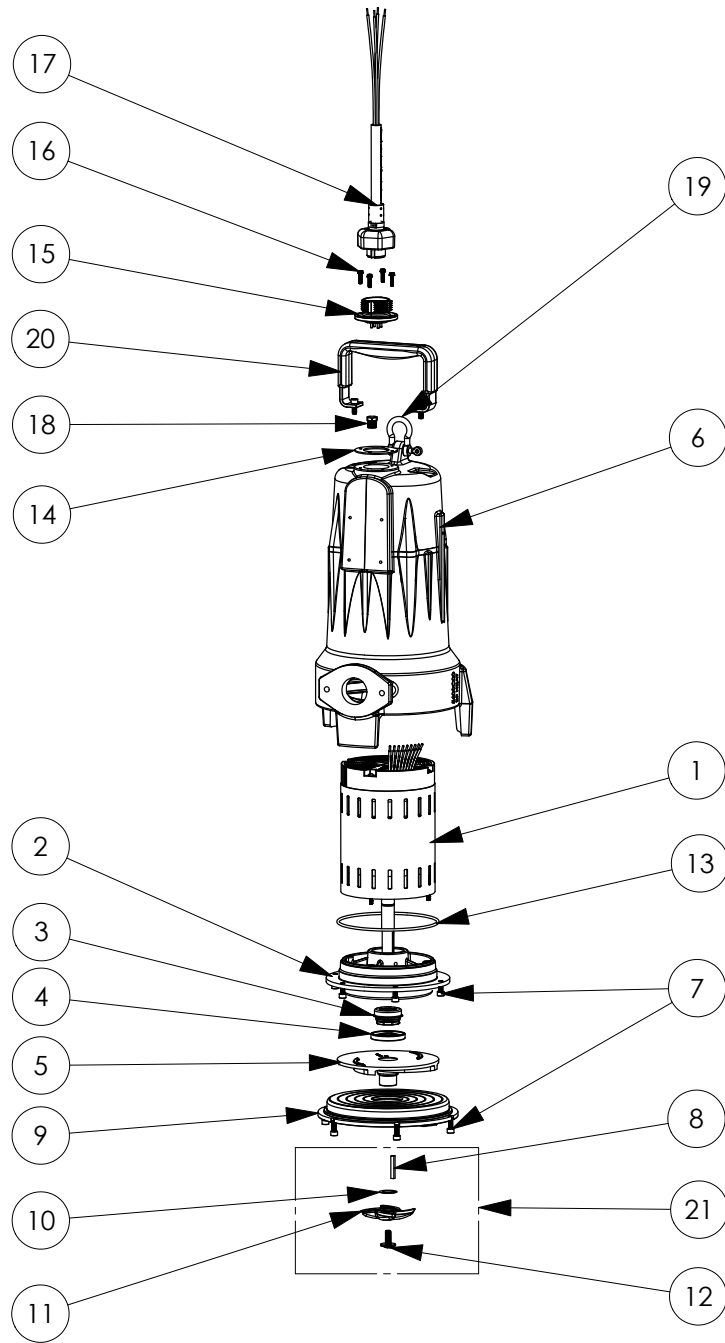


LSG204M (B29)



LSG204M

LSG204M (B29)

#	PART #	DESCRIPTION	QTY	Note
1	5628000	MOTOR	1	
2	5632000	MOTOR PLATE	1	
3	5633000	3/4" UNITIZED SHAFT SEAL	1	[1]
4	5618000	DOUBLE LIP SEAL	1	
5	K001538	GRINDER IMPELLER KIT	1	
6	560000R	OMNIVORE HOUSING	1	
7	5646000	CAP SCREW, SHCS, 1/4-28 X 9/16" SS	14	
8	56350A0	KEY 3/16 X 1.32 SS	1	
9	5615000	CUTTER PLATE	1	
10	K001445	ROTARY CUTTER SHIM KIT	1	
11	5616900	ROTARY CUTTER	1	
12	56362B0	FLANGED IMPELLER BOLT, M8 THREAD	1	
13	5617000	O-RING	1	
14	5060000	CORD PLATE GASKET	1	
15	5629000	CORDPLATE	1	
16	8064000	#8-32 x 5/8 HEX WASHER HEAD SCREW	4	
17	K001357	POWER CORD, 25FT	1	
18	50710A0	PIPE PLUG, 1/4" HEX HD BRASS NPTF	1	
19	5611000	SHACKLE	1	
20	5613000	HANDLE	1	
21	K001139	CUTTER KIT*KIT INCLUDES CUTTER, CAP SCREW, SHAFT KEY WASHER AND SHIMS*	1	[2]

PART NOTES:

- [1] - Part requires factory authorized service. Contact Liberty Pumps at 1-800-543-2550
- [2] - For LSG Grinder Cutter Replacment Instructions see LSG Grinder Cutter Replacement
For LSG Grinder Cutter Replacment Instructions see LSG Grinder Cutter Replacement