

BALDOR® • RELIANCE 

Product Information Packet

M1006T

2/.5HP,1725/850RPM,3PH,60HZ,145T,3528M,O

| Part Detail | | | | | | | |
|-------------|---------|-------------|------------|-------------|--------|---------------|------------|
| Revision: | H | Status: | PRD/A | Change #: | | Proprietary: | No |
| Type: | AC | Elec. Spec: | 35WG475 | CD Diagram: | CD0032 | Mfg Plant: | |
| Mech. Spec: | 35BB001 | Layout: | 35LYBB001 | Poles: | 04/08 | Created Date: | 12-22-2009 |
| Base: | RG | Eff. Date: | 08-21-2017 | Leads: | 6#18 | | |

| Specs | | | |
|---------------------------------|-------------------------|--------------------------------|--------------------|
| Catalog Number: | M1006T | Insulation Class: | F |
| Enclosure: | OPEN | Inverter Code: | Not Inverter |
| Frame: | 145T | KVA Code: | K |
| Frame Material: | Steel | Lifting Lugs: | No Lifting Lugs |
| Output @ Frequency: | 2.000 HP @ 60 HZ | Locked Bearing Indicator: | No Locked Bearing |
| | .500 HP @ 60 HZ | Motor Lead Quantity/Wire Size: | 6 @ 18 AWG |
| Synchronous Speed @ Frequency: | 900 RPM @ 60 HZ | Motor Lead Exit: | Ko Box |
| Voltage @ Frequency: | 230.0 V @ 60 HZ | Motor Lead Termination: | Flying Leads |
| XP Class and Group: | None | Motor Type: | 3528M |
| XP Division: | Not Applicable | Mounting Arrangement: | F1 |
| Agency Approvals: | UR | Product Family: | General Purpose |
| | CSA | Pulley End Bearing Type: | Ball |
| Auxillary Box: | No Auxillary Box | Pulley Face Code: | Standard |
| Auxillary Box Lead Termination: | None | Pulley Shaft Indicator: | Standard |
| Base Indicator: | Rigid | Rodent Screen: | None |
| Bearing Grease Type: | Polyrex EM (-20F +300F) | Shaft Extension Location: | Pulley End |
| Blower: | None | Shaft Ground Indicator: | No Shaft Grounding |
| Current @ Voltage: | 6.100 A @ 230.0 V | Shaft Rotation: | Reversible |

| | | | |
|---------------------------------------|---------------------------|------------------------------------|---------------------|
| Design Code: | B | Shaft Slinger Indicator: | No Slinger |
| Drip Cover: | No Drip Cover | Speed Code: | 2S-1W-VT |
| Duty Rating: | CONT | Motor Standards: | NEMA |
| Electrically Isolated Bearing: | Not Electrically Isolated | Starting Method: | Direct on line |
| Feedback Device: | NO FEEDBACK | Thermal Device - Bearing: | NONE (OLD) |
| Front Face Code: | Standard | Thermal Device - Winding: | None |
| Front Shaft Indicator: | None | Vibration Sensor Indicator: | No Vibration Sensor |
| Heater Indicator: | No Heater | Winding Thermal 1: | None |
| | | Winding Thermal 2: | None |

| | | | | | | | | | | |
|--------------------------|---------------|--|-------------|---|------------|------|--|--------------|-----------------------|---|
| Nameplate NP1256L | | | | | | | | | | |
| CAT.NO. | M1006T | | | | | | | | | |
| SPEC. | 35BB001X475G1 | | | | | | | | | |
| HP | 2/.5 | | | | | | | | | |
| VOLTS | 230 | | | | | | | | | |
| AMP | 6.1/2.6 | | | | | | | | | |
| RPM | 1725/850 | | | | | | | | | |
| FRAME | 145T | | | | HZ | 60 | | | PH | 3 |
| SER.F. | 1.15 | | CODE | K | DES | B | | CLASS | F | |
| NEMA-NOM-EFF | | | PF | | | | | | | |
| RATING | 40C AMB-CONT | | | | | | | | | |
| CC | | | | | | | | | USABLE AT 208V | |
| DE | 6205 | | | | ODE | 6203 | | | | |
| ENCL | OPEN | | SN | | | | | | | |

| Parts List | | |
|-------------|--|----------|
| Part Number | Description | Quantity |
| SA189005 | SA 35BB001X475G1 | 1.000 EA |
| RA176724 | RA 35BB001X475G1 | 1.000 EA |
| NS2512A01 | INSULATOR, CONDUIT BOX X | 1.000 EA |
| 35CB3009 | 35 CB W/1.09 DIA. LEAD HOLE @ 6: | 1.000 EA |
| 51XB1016A07 | 10-16 X 7/16 HXWSSLD SERTYB | 2.000 EA |
| 11XW1032G06 | 10-32 X .38, TAPTITE II, HEX WSHR SLTD U | 1.000 EA |
| 35EP3209A00 | MASTER ODE,203 BRG,GRSR | 1.000 EA |
| HW4500A01 | 1641B(ALEMITE)400 UNIV, GREASE FITT | 1.000 EA |
| HW5100A03 | WAVY WASHER (W1543-017) | 1.000 EA |
| 35EP3210A00 | MASTER DE,205 BRG,1.000SH,GRSR | 1.000 EA |
| HW4500A01 | 1641B(ALEMITE)400 UNIV, GREASE FITT | 1.000 EA |
| XY1032A02 | 10-32 HEX NUT DIRECTIONAL SERRATION | 4.000 EA |
| 35CB4521 | 35 LIPPED CB LID (GALV & PHOSPH) | 1.000 EA |
| 51XW0832A07 | 8-32 X .44, TAPTITE II, HEX WSHR SLTD SE | 4.000 EA |
| HW2501D13 | KEY, 3/16 SQ X 1.375 | 1.000 EA |
| HA7000A01 | KEY RETAINER 7/8" DIA SHAFT | 1.000 EA |
| 85XU0407S04 | 4X1/4 U DRIVE PIN STAINLESS | 2.000 EA |
| MJ1000A02 | GREASE, POLYREX EM EXXON (USe 4824-15A) | 0.050 LB |
| MG1000G27 | MED CHARCOAL METALLIC GREY 400-0096 | 0.017 GA |
| HA3100A18 | THRUBOLT 10-32 X 9.250 | 4.000 EA |
| LB1119N | WARNING LABEL | 1.000 EA |
| LC0032 | CONNECTION LABEL | 1.000 EA |
| NP1256L | ALUM UL CSA CC INDUSTRIAL MOTOR A60 | 1.000 EA |
| 35PA1066 | PKG GRP, PRINT PK1008A06 | 1.000 EA |

| Parts List (continued) | | |
|-------------------------------|---|-----------------|
| Part Number | Description | Quantity |
| MN416A01 | TAG-INSTAL-MAINT no wire (1200/bx) 5/18 | 1.000 EA |
| PE-0000001 | ZRTG PE ASSEMBLY | 1.000 EA |
| FE-0000001 | ZRTG FE ASSEMBLY | 1.000 EA |

| Accessories | | |
|--------------------|--------------------|-------------------|
| Part Number | Description | Multiplier |
| 35-8764 | C FACE KIT | A8 |
| 35EP1604A01SP | D-FLANGE KIT | A8 |

AC Induction Motor Performance Data

Record # 61509 - Typical performance - not guaranteed values

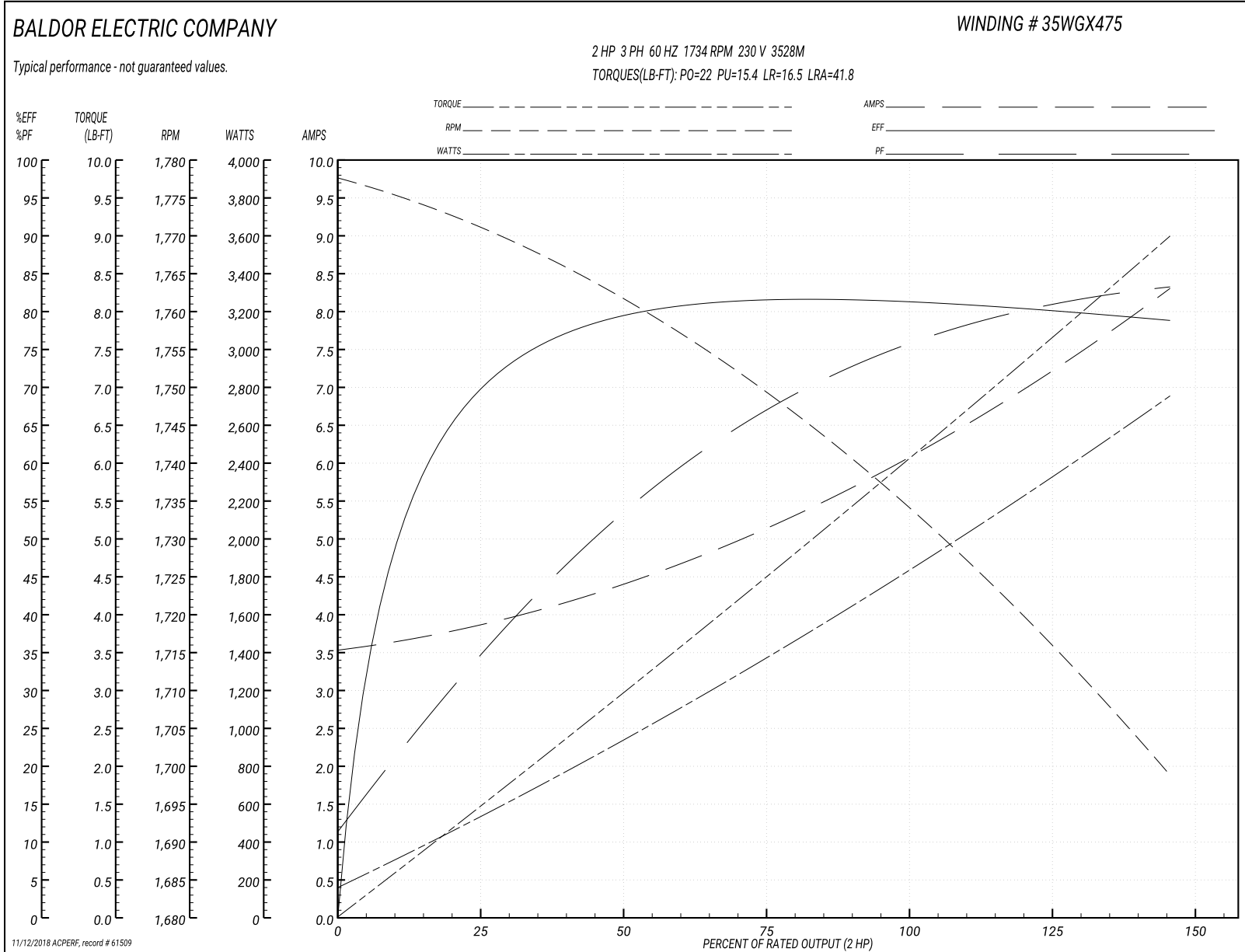
| | | |
|-------------------------------|--------------------|------------------------|
| Winding: 35WGX475-R006 | Type: 3528M | Enclosure: OPEN |
|-------------------------------|--------------------|------------------------|

| Nameplate Data | | | | 230 V, 60 Hz: High Speed Connection | |
|-----------------------|--------------|--------------|---|--|--------------------------|
| Rated Output (HP) | 2/5 | | | Full Load Torque | 6 LB-FT |
| Volts | 230 | | | Start Configuration | direct on line |
| Full Load Amps | 6.1/2.6 | | | Breakdown Torque | 22 LB-FT |
| R.P.M. | 1725/850 | | | Pull-up Torque | 15.4 LB-FT |
| Hz | 60 | Phase | 3 | Locked-rotor Torque | 16.5 LB-FT |
| NEMA Design Code | B | KVA Code | K | Starting Current | 41.8 A |
| Service Factor (S.F.) | 1.15 | | | No-load Current | 3.6 A |
| NEMA Nom. Eff. | 0 | Power Factor | 0 | Line-line Res. @ 25°C | 2.61 Ω |
| Rating - Duty | 40C AMB-CONT | | | Temp. Rise @ Rated Load | 51°C |
| S.F. Amps | | | | Temp. Rise @ S.F. Load | 60°C |
| | | | | Locked-rotor Power Factor | 75.5 |
| | | | | Rotor inertia | 0.166 LB-FT ² |

Load Characteristics 230 V, 60 Hz, 2 HP

| % of Rated Load | 25 | 50 | 75 | 100 | 125 | 150 | S.F. |
|-----------------|------|------|------|------|------|------|------|
| Power Factor | 36 | 54 | 69 | 74 | 79 | 84 | 77 |
| Efficiency | 69.5 | 79.4 | 81.8 | 81.3 | 80.3 | 78.8 | 80.7 |
| Speed | 1754 | 1770 | 1753 | 1734 | 1716 | 1699 | 1723 |
| Line amperes | 3.8 | 4.4 | 5 | 6.2 | 7.2 | 8.2 | 6.8 |

Performance Graph at 230V, 60Hz, 2.0HP Typical performance - Not guaranteed values



AC Induction Motor Performance Data

Record # 61510 - Typical performance - not guaranteed values

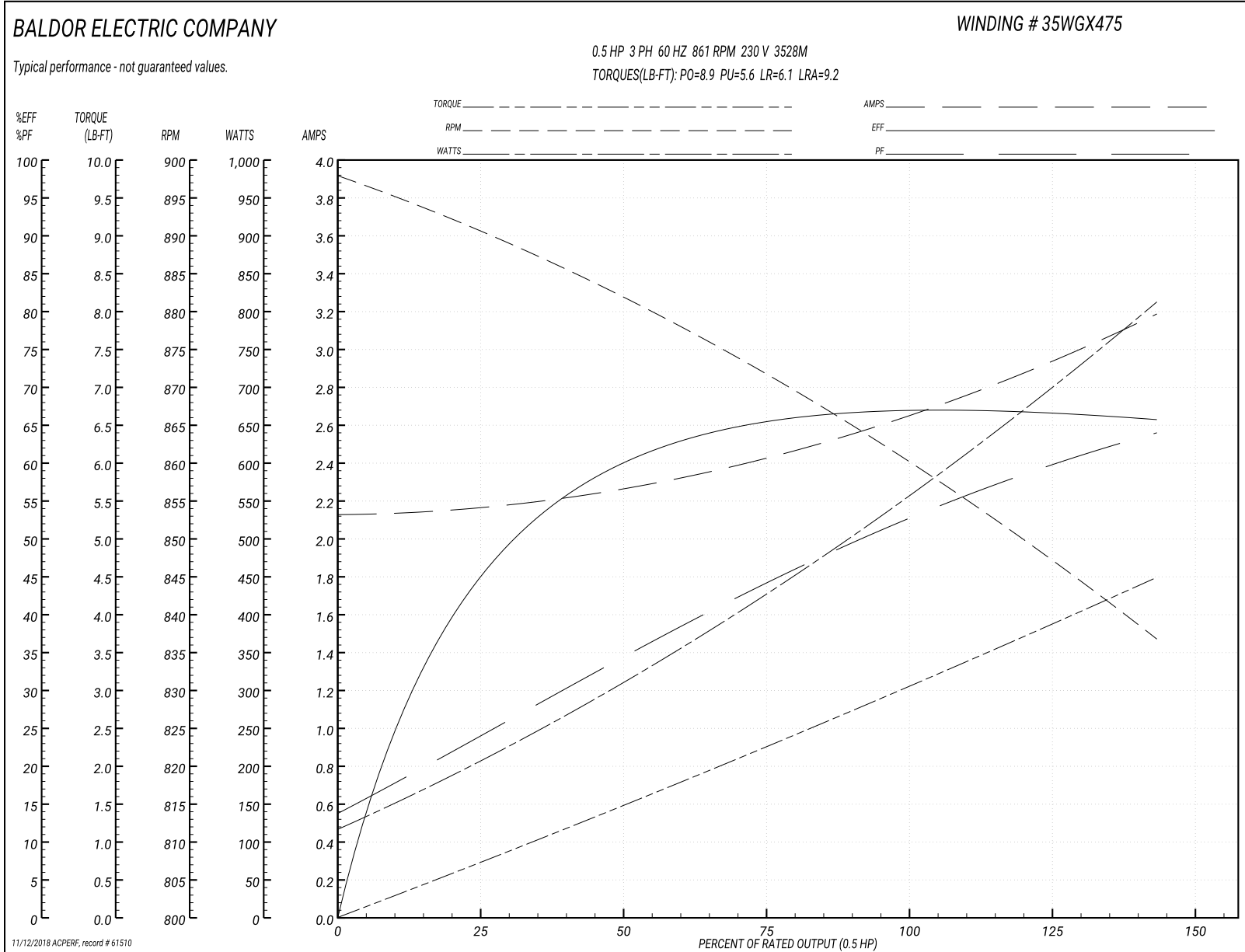
| | | |
|-------------------------------|--------------------|------------------------|
| Winding: 35WGX475-R006 | Type: 3528M | Enclosure: OPEN |
|-------------------------------|--------------------|------------------------|

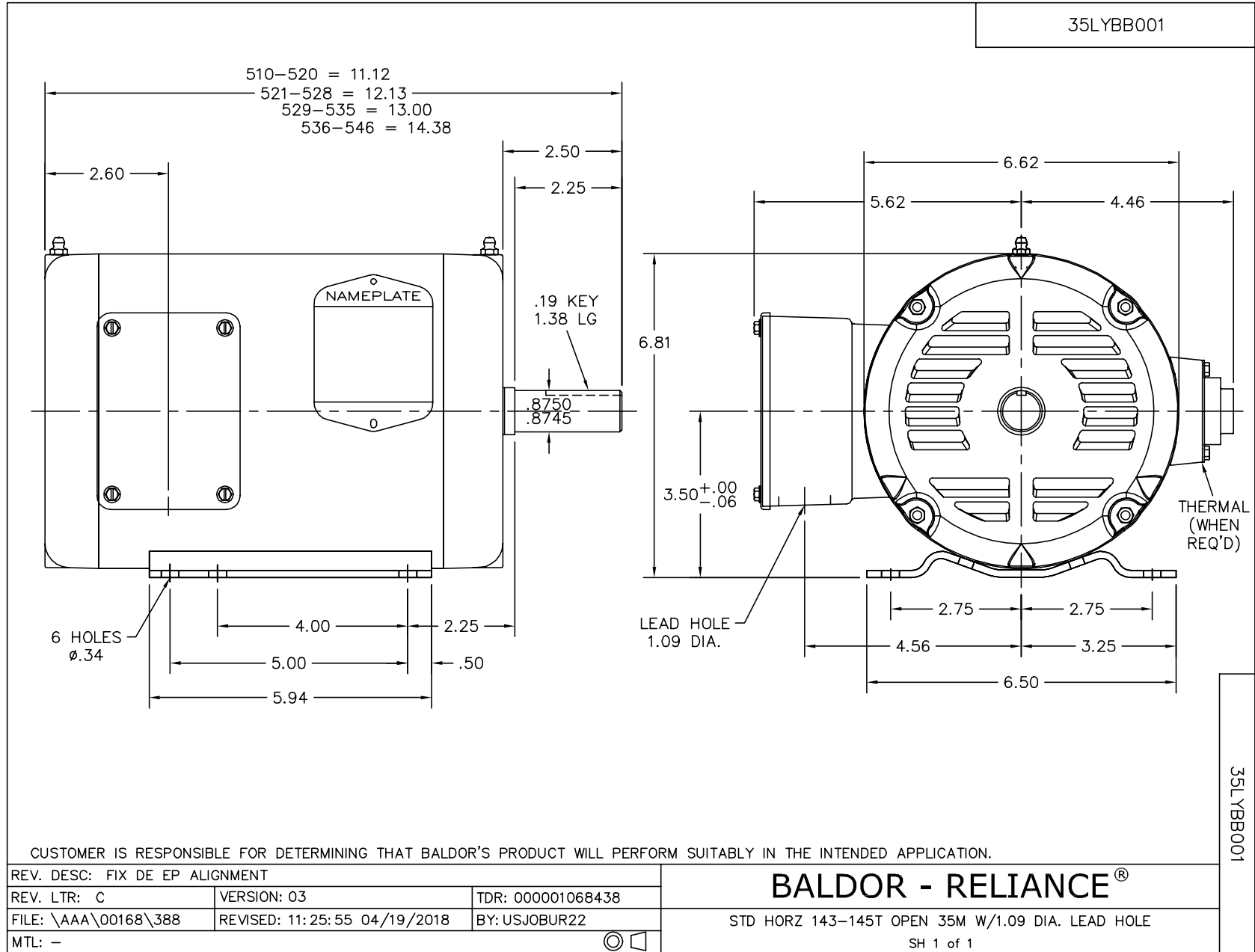
| Nameplate Data | | | | 230 V, 60 Hz: Low Speed Connection | |
|-----------------------|--------------|--------------|---|---------------------------------------|--------------------------|
| Rated Output (HP) | 2/5 | | | Full Load Torque | 3 LB-FT |
| Volts | 230 | | | Start Configuration | direct on line |
| Full Load Amps | 6.1/2.6 | | | Breakdown Torque | 8.9 LB-FT |
| R.P.M. | 1725/850 | | | Pull-up Torque | 5.6 LB-FT |
| Hz | 60 | Phase | 3 | Locked-rotor Torque | 6.1 LB-FT |
| NEMA Design Code | B | KVA Code | K | Starting Current | 9.2 A |
| Service Factor (S.F.) | 1.15 | | | No-load Current | 2.1 A |
| NEMA Nom. Eff. | 0 | Power Factor | 0 | Line-line Res. @ 25°C | 10.4 Ω |
| Rating - Duty | 40C AMB-CONT | | | Temp. Rise @ Rated Load | 46°C |
| S.F. Amps | | | | Temp. Rise @ S.F. Load | 50°C |
| | | | | Locked-rotor Power Factor | 67.6 |
| | | | | Rotor inertia | 0.166 LB-FT ² |

Load Characteristics 230 V, 60 Hz, 0.5 HP

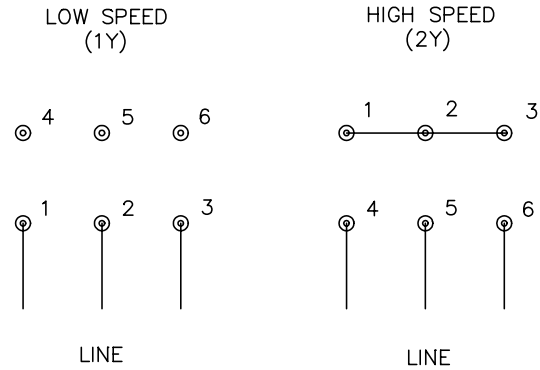
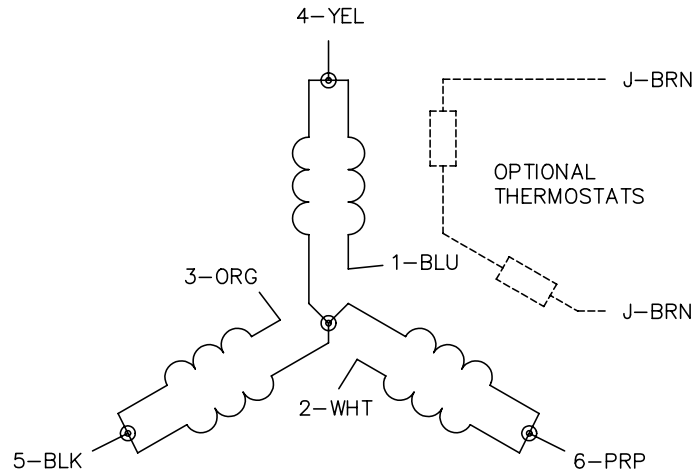
| % of Rated Load | 25 | 50 | 75 | 100 | 125 | 150 | S.F. |
|-----------------|-----|------|-----|------|-----|------|------|
| Power Factor | 24 | 34 | 45 | 53 | 59 | 64 | 57 |
| Efficiency | 46 | 59.6 | 65 | 67.3 | 67 | 65.6 | 67.1 |
| Speed | 889 | 881 | 873 | 861 | 850 | 836 | 854 |
| Line amperes | 2.2 | 2.3 | 2.4 | 2.6 | 2.9 | 3.2 | 2.78 |

Performance Graph at 230V, 60Hz, 0.5HP Typical performance - Not guaranteed values





CD0032



NOTES:

1. INTERCHANGE ANY TWO LINE LEADS TO REVERSE ROTATION.
2. OPTIONAL THERMOSTATS ARE PROVIDED WHEN SPECIFIED.
3. ACTUAL NUMBER OF INTERNAL PARALLEL CIRCUITS MAY BE A MULTIPLE OF THOSE SHOWN ABOVE.
4. LEAD COLORS ARE OPTIONAL. LEADS MUST ALWAYS BE NUMBERED AS SHOWN.

| | | | |
|---|---------|------------------------|--------------|
| REV. DESC: REVISE TO SHOW OPTIONAL COLORS | | | |
| REV. LTR: E | BY: JLP | REVISED: 01/22/99 8:27 | TDR: 0171435 |
| CD0032 | | FILE: AAA00005145 | MDL: - |
| | | MTL: - | |

BALDOR ELECTRIC Co.

3PH, SV, 6 LEADS, 2-SPEED 1-WINDING VARIABLE TORQUE

CD0032