



Customer information packet

M1760T

10/2.5HP, 1760/875RPM, 3PH, 60HZ, 213T, 3748M

Class - None

Division - Not Applicable

Specifications

Enclosure	TEFC
Frame	213T
Frame Material	Steel
Frequency	60.00 Hz
Haz Area Class and Group	None
Haz Area Division	Not Applicable
Motor Letter Type	Three Phase
Output @ Frequency	2.500 HP @ 60 HZ 10.000 HP @ 60 HZ
Phase	3
Synchronous Speed @ Frequency	1800 RPM @ 60 HZ
Voltage @ Frequency	460.0 V @ 60 HZ
Agency Approvals	UR CSA
Ambient Temperature	40 °C
Auxillary Box	No Auxillary Box
Auxillary Box Lead Termination	None
Base Indicator	Rigid
Bearing Grease Type	Polyrex EM (-20F +300F)
Blower	None
Current @ Voltage	12.800 A @ 460.0 V
Design Code	B
Drip Cover	No Drip Cover
Duty Rating	CONT
Electrically Isolated Bearing	Not Electrically Isolated
Feedback Device	NO FEEDBACK
Front Shaft Indicator	None
Heater Indicator	No Heater
High Voltage Full Load Amps	4.8 a
Insulation Class	H
Inverter Code	Not Inverter
KVA Code	K

Part detail

Revision	C
Type	AC
Mech. spec.	37F369
Base	
Status	PRD/A
Elec. spec.	37WGZ651
Layout	37LYF369
Eff. date	05-10-2024
CD Diagram	CD0032
Poles	04/08
Leads	6#14
Proprietary	False
Created date	12-09-2020

Lifting Lugs	Standard Lifting Lugs
Locked Bearing Indicator	No Locked Bearing
Motor Lead Quantity/Wire Size	6 @ 14 AWG
Motor Lead Termination	Flying Leads
Motor Standards	NEMA
Motor Type	3748M
Mounting Arrangement	F1
Number of Poles	4 8
Overall Length	20.52 IN
Product Family	General Purpose
Pulley End Bearing Type	Ball
Pulley Face Code	Standard
Pulley Shaft Indicator	Standard
Rodent Screen	None
Service Factor	1.15
Shaft Diameter	1.375 IN
Shaft Ground Indicator	No Shaft Grounding
Shaft Rotation	Reversible
Shaft Slinger Indicator	No Slinger
Speed	1760 rpm 875 rpm
Speed Code	2S-1W-VT
Starting Method	Direct on line
Thermal Device - Bearing	None
Thermal Device - Winding	None
Vibration Sensor Indicator	No Vibration Sensor
Winding Thermal 1	None
Winding Thermal 2	None

Nameplate

NP1256L									
CAT.NO.	M1760T								
SPEC.	37F369Z651								
HP	10/2.5								
VOLTS	460								
AMP	12.8/4.8								
RPM	1760/875								
FRAME	213T		HZ	60		PH	3		
SER.F.	1.15	CODE	K	DES	B	CLASS	H		
NEMA-NOM-EFF		PF							
RATING	40C AMB-CONT								
CC									
DE	6307		ODE	6206					
ENCL	TEFC	SN							
	SFA 14.7/5.4								

Accessories

Part number	Description	Multiplier
37-3301	C FACE KIT	P1

AC Induction Motor Performance Data

Record # 85744

Preliminary Data Sheet

Winding: 37WGZ651-R001		Type: 3748M	Enclosure: TEFC	
Nameplate Data			460 V, 60 Hz: High Speed Connection	
Rated Output (HP)	10/2.5	Full Load Torque	29.87 LB-FT	
Volts	460	Start Configuration	direct on line	
Full Load Amps	12.8/4.8	Breakdown Torque	104 LB-FT	
R.P.M.	1760/875	Pull-up Torque	40.34 LB-FT	
Hz	60 Phase	3	Locked-rotor Torque	91.1 LB-FT
NEMA Design Code	B KVA Code	K	Starting Current	108 A
Service Factor (S.F.)		1.15	No-load Current	4.74 A
NEMA Nom. Eff.	0 Power Factor	0	Line-line Res. @ 25°C	1.17 Ω
Rating - Duty	40C AMB-CONT		Temp. Rise @ Rated Load	85°C
S.F. Amps	14.7/5.4		Temp. Rise @ S.F. Load	104°C
			Locked-rotor Power Factor	46
			Rotor inertia	1.19 lb-ft ²

Load Characteristics 460 V, 60 Hz, 10 HP

% of Rated Load	25	50	75	100	125	150	S.F.
Power Factor	48	70	78	83	84	84	84
Efficiency	85.4	89.4	89.4	88.1	86.3	83.9	87
Speed	1791	1781	1771	1759	1747	1731	1752
Line amperes	5.56	7.51	9.89	12.83	16.03	19.93	14.8

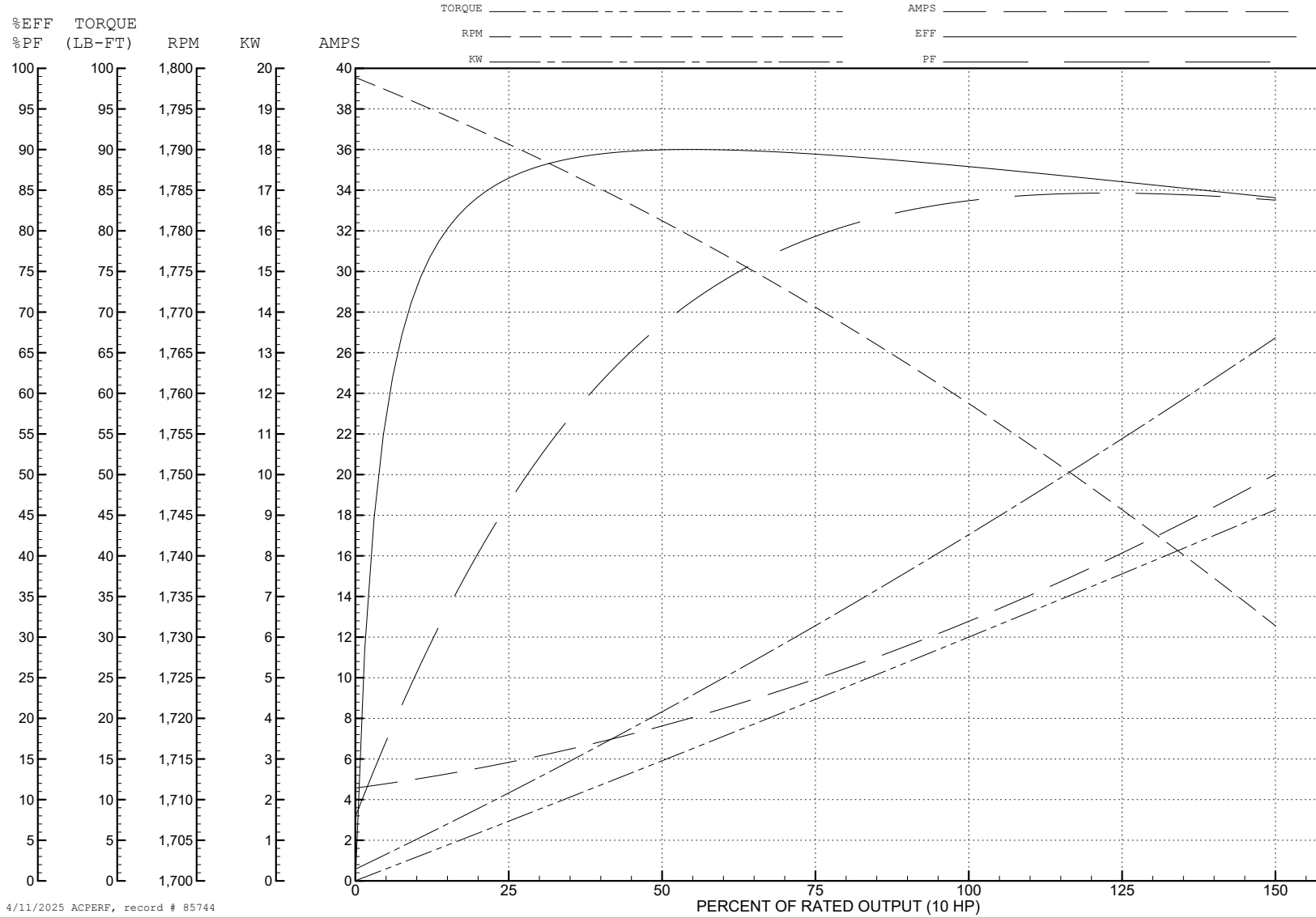
ABB Motors and Mechanical Inc.

WINDING # 37WGZ651

Typical performance - not guaranteed values.

10 HP 3 PH 60 HZ 1759 RPM 460 V 3748M

TORQUES (LB-FT): PO=104 PU=40.34 LR=91.1 LRA=108



4/11/2025 ACPERF, record # 85744

AC Induction Motor Performance Data

Record # 85746

Preliminary Data Sheet

Winding: 37WGZ651-R001		Type: 3748M	Enclosure: TEFC
Nameplate Data		460 V, 60 Hz: Low Speed Connection	
Rated Output (HP)	10/2.5	Full Load Torque	14.9 LB-FT
Volts	460	Start Configuration	direct on line
Full Load Amps	12.8/4.8	Breakdown Torque	36.1 LB-FT
R.P.M.	1760/875	Pull-up Torque	17.3 LB-FT
Hz	60 Phase 3	Locked-rotor Torque	27.1 LB-FT
NEMA Design Code	B KVA Code K	Starting Current	18.6 A
Service Factor (S.F.)	1.15	No-load Current	3.36 A
NEMA Nom. Eff.	0 Power Factor 0	Line-line Res. @ 25°C	4.68 Ω
Rating - Duty	40C AMB-CONT	Temp. Rise @ Rated Load	43°C
S.F. Amps	14.7/5.4	Temp. Rise @ S.F. Load	51°C
		Locked-rotor Power Factor	46
		Rotor inertia	1.19 lb-ft ²

Load Characteristics 460 V, 60 Hz, 2.5 HP

% of Rated Load	25	50	75	100	125	150	S.F.
Power Factor	23	38	50	59	65	68	63
Efficiency	74	83.1	85.9	86.7	86.5	85.7	86.6
Speed	895.4	891.1	886.4	881.4	875.7	869.1	878
Line amperes	3.45	3.69	4.07	4.59	5.22	5.99	4.97

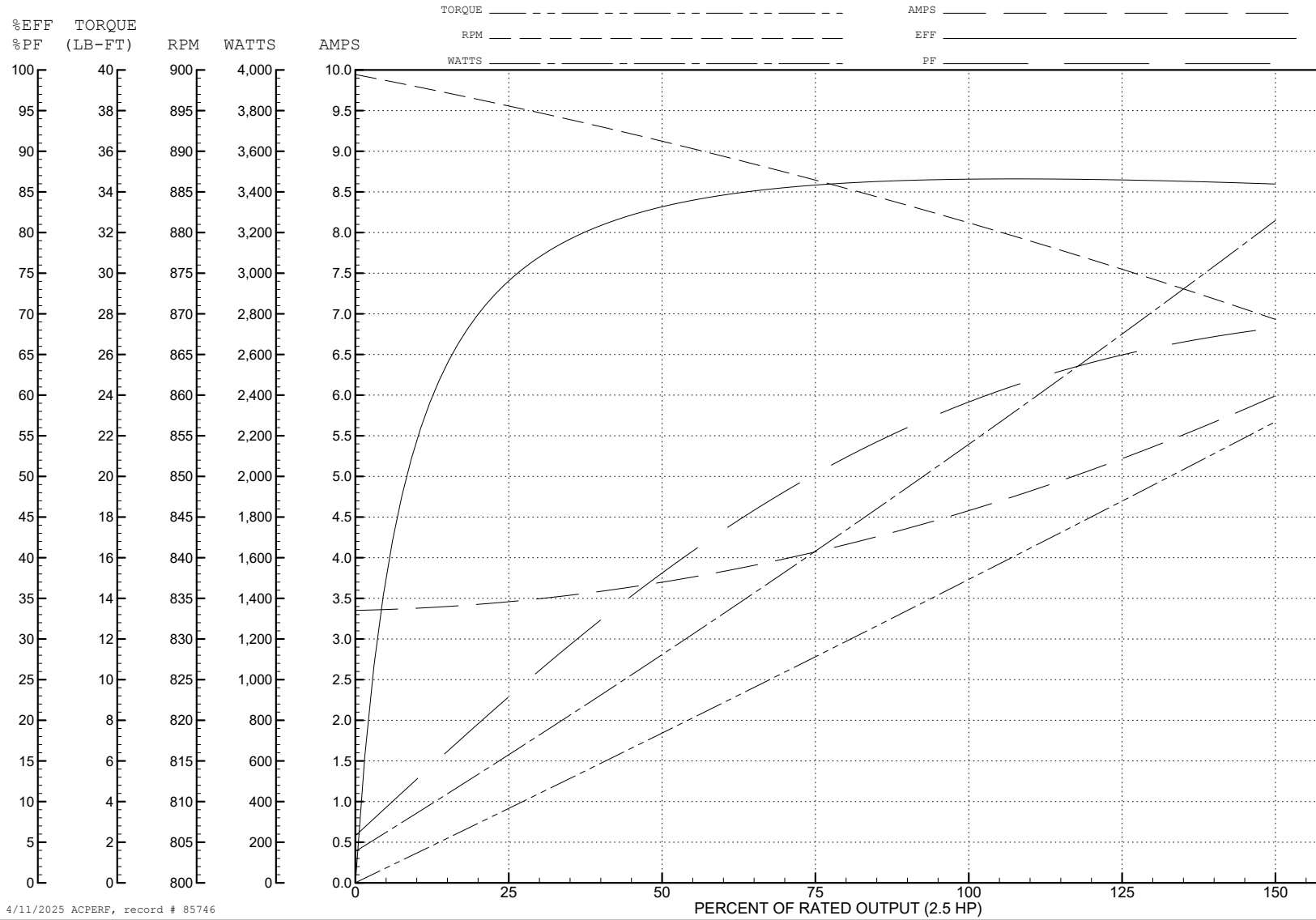
ABB Motors and Mechanical Inc.

WINDING # 37WGZ651

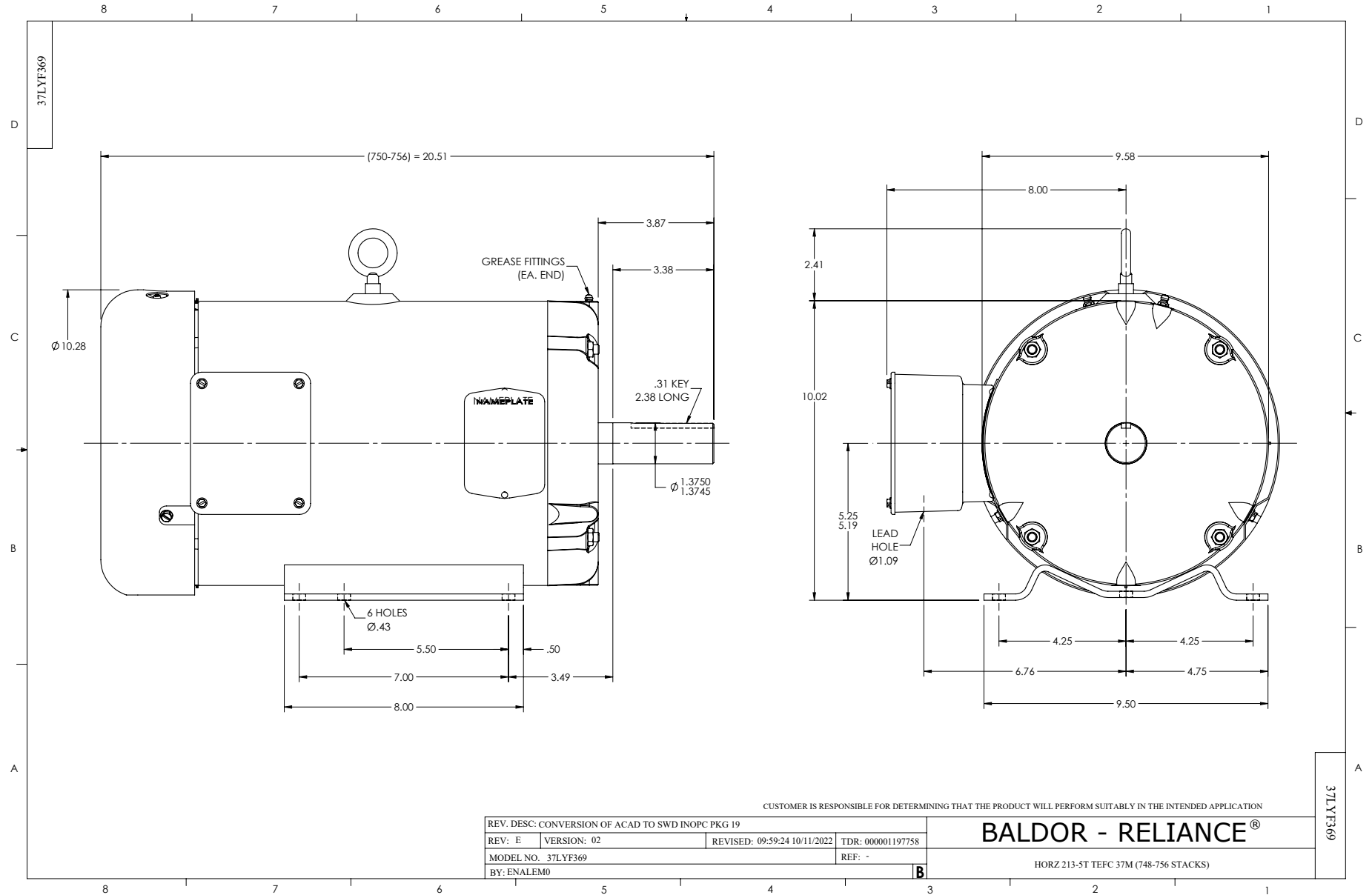
Typical performance - not guaranteed values.

2.5 HP 3 PH 60 HZ 881.4 RPM 460 V 3748M

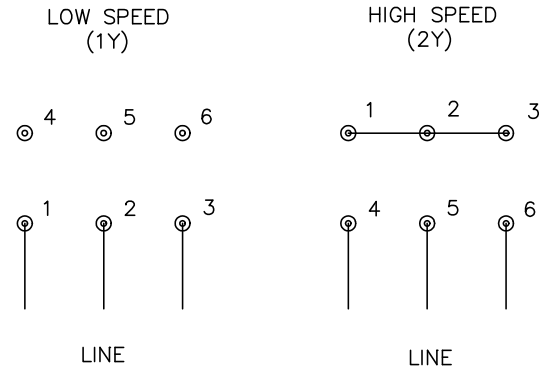
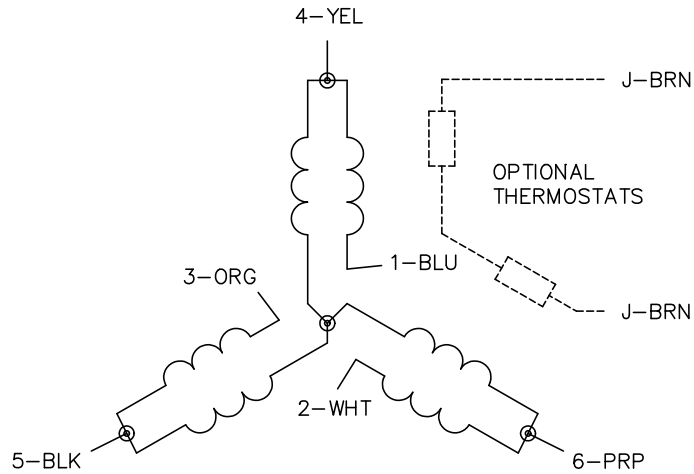
TORQUES (LB-FT): PO=36.1 PU=17.3 LR=27.1 LRA=18.6



4/11/2025 ACPERF, record # 85746



CD0032



NOTES:

1. INTERCHANGE ANY TWO LINE LEADS TO REVERSE ROTATION.
2. OPTIONAL THERMOSTATS ARE PROVIDED WHEN SPECIFIED.
3. ACTUAL NUMBER OF INTERNAL PARALLEL CIRCUITS MAY BE A MULTIPLE OF THOSE SHOWN ABOVE.
4. LEAD COLORS ARE OPTIONAL. LEADS MUST ALWAYS BE NUMBERED AS SHOWN.

CD0032

REV. DESC: REVISE TO SHOW OPTIONAL COLORS			
REV. LTR: E	BY: JLP	REVISED: 01/22/99 8:27	TDR: 0171435
CD0032		FILE: AAA00005145	MDL: -
		MTL: -	

BALDOR ELECTRIC Co.

3PH, SV, 6 LEADS, 2-SPEED 1-WINDING VARIABLE TORQUE