

PRODUCT INFORMATION PACKET



Model No: NZ6C17VC1B

Catalog No: 116349.00

1/3HP..1725RPM.56.TENV./V.1PH.60HZ.CONT.NOT.40C.1.15SF.C FACE.WASHGUARD-ALL
STAINLESS.NZ6C17VC1B

1 Phase



Regal and Leeson are trademarks of Regal Beloit Corporation or one of its affiliated companies.

©2018 Regal Beloit Corporation, All Rights Reserved. MC017097E



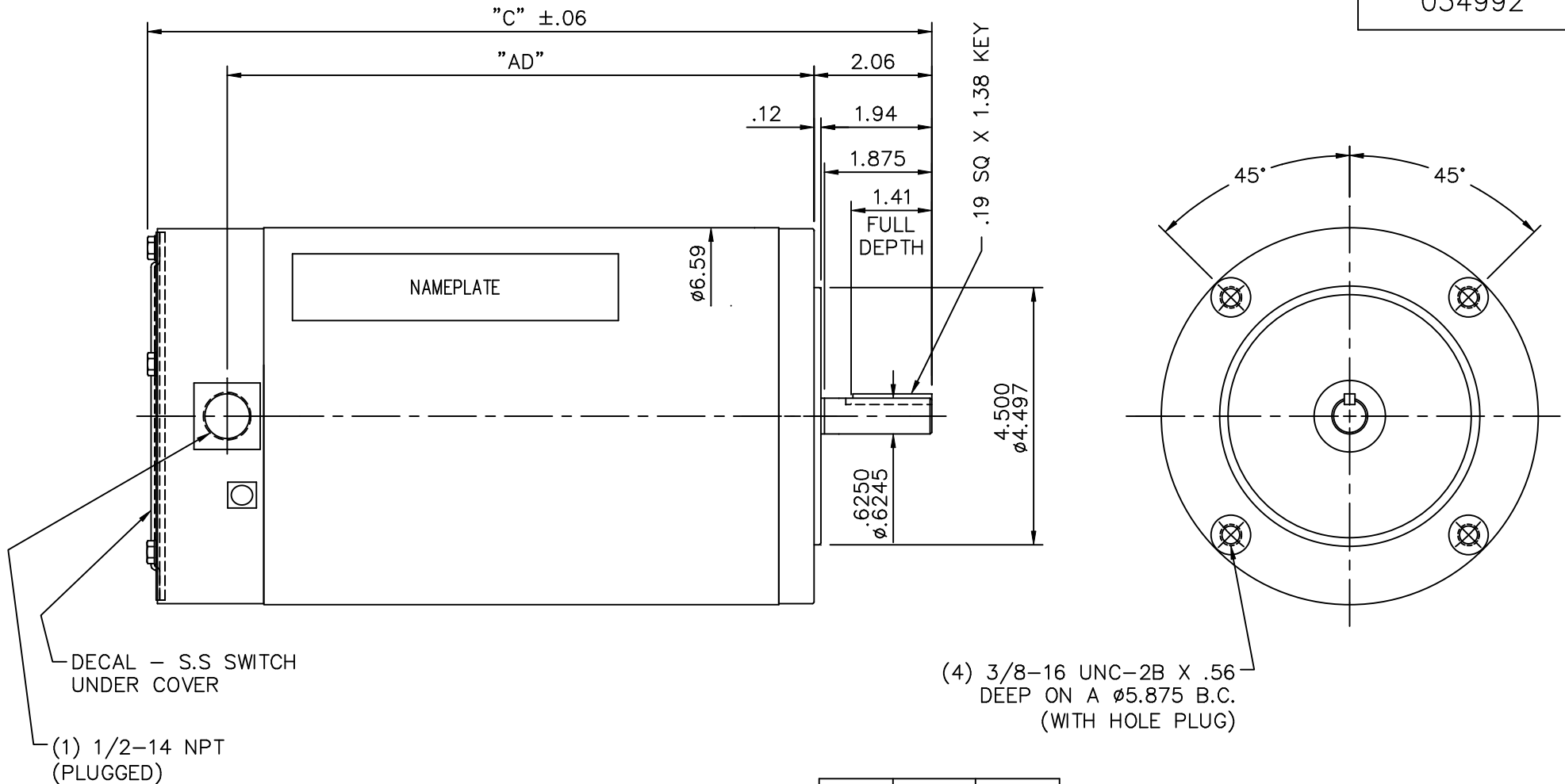


Nameplate Specifications

Output HP	0.33 Hp	Output KW	0.25 kW
Frequency	60 Hz	Voltage	115/208-230 V
Current	5.4/3.0-2.7 A	Speed	1725 rpm
Service Factor	1.15	Phase	1
Efficiency	72 %	Duty	Continuous
Insulation Class	F	Design Code	L
KVA Code	M	Frame	56C
Enclosure	Totally Enclosed Non Ventilated	Overload Protector	No
Ambient Temperature	40 °C	Drive End Bearing Size	6205
Opp Drive End Bearing Size	6203	UL	Recognized
CSA	Y	CE	N
IP Code	43		

Technical Specifications

Electrical Type	Capacitor Start Induction Run	Starting Method	Across The Line
Poles	4	Rotation	Selective Counterclockwise
Mounting	Round	Motor Orientation	HORIZONTAL
Drive End Bearing	BALL	Opp Drive End Bearing	BALL
Frame Material	Stainless Steel	Shaft Type	NEMA 56
Overall Length	11.70 in	Frame Length	7.00 in
Shaft Diameter	0.625 in	Shaft Extension	1.88 in
Assembly/Box Mounting	F1 ONLY		
Outline Drawing	034992-700	Connection Diagram	005278.01



SPECIAL FEATURES:

- VITON CONDUIT BOX & COVER GASKETS
- VITON O-RINGS IN ENDBELL RABBETS
- VITON SHAFT SEAL
- BREATHER PLUGS IN L.E. ENDBELL (B.I.C.B.)
- ALL STAINLESS STEEL CONSTRUCTION

DASH NO.	"C"	"AD"
700	11.70	8.25
750	12.20	8.75
800	12.70	9.25
850	13.20	9.75
900	13.70	10.25

MAXIMUM FACE RUNOUT TO BE .004 T.I.R.
 MAXIMUM PILOT ECCENTRICITY .004 T.I.R.
 PERMISSIBLE SHAFT RUNOUT .002 T.I.R.

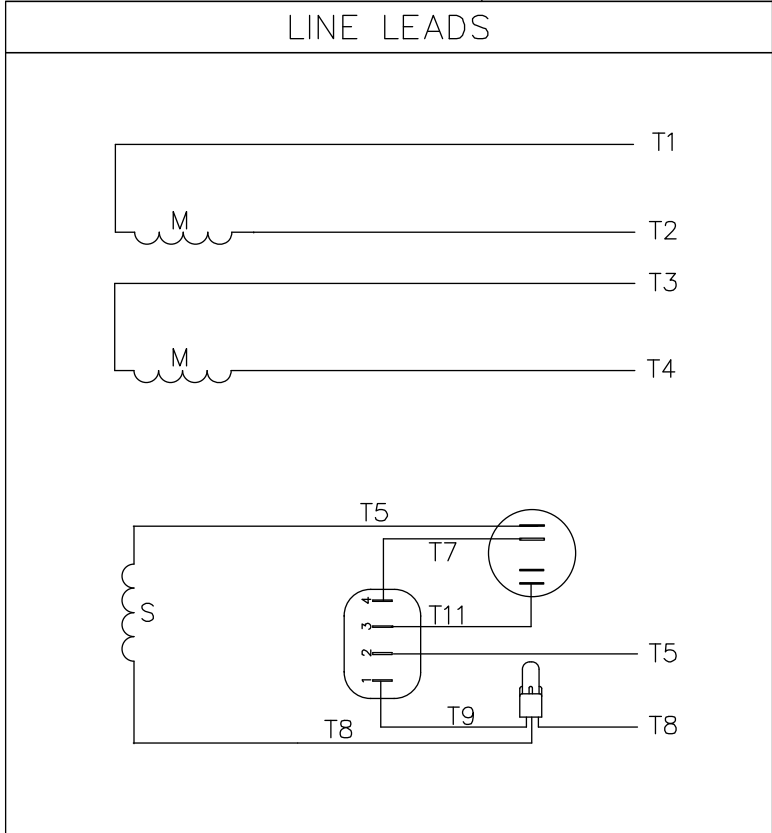
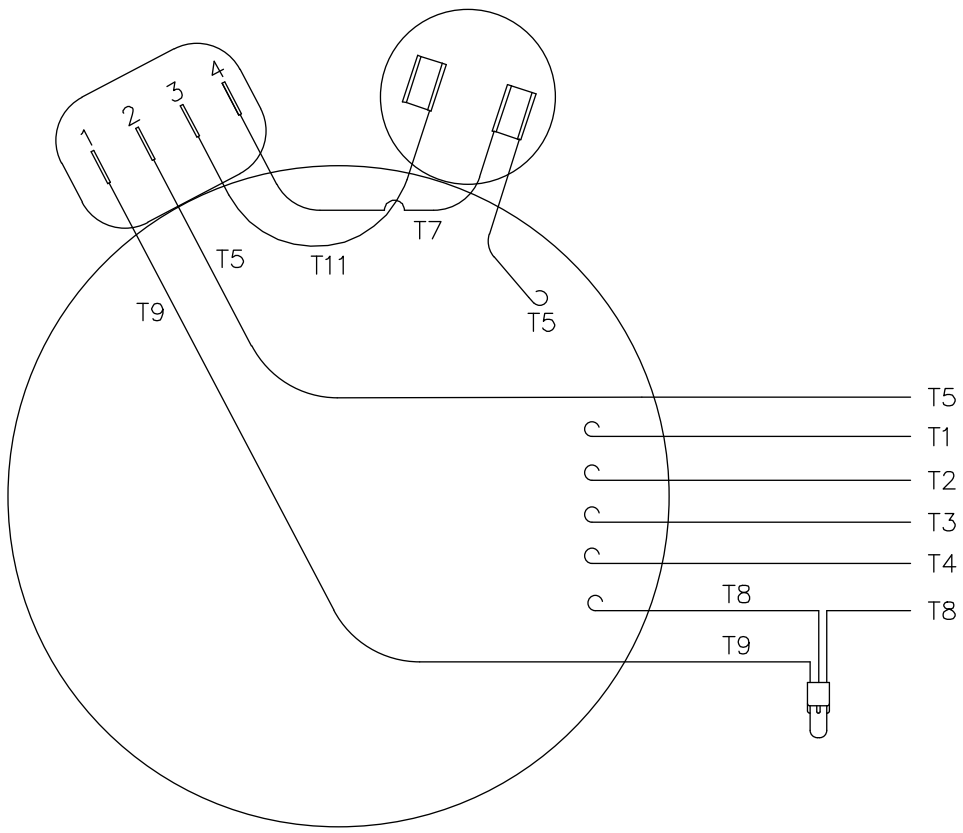
		TOLERANCES UNLESS SPECIFIED		LEESON	ELECTRIC MOTORS GEARMOTORS AND DRIVES	DRAWN	LST 3/25/03		
		DEC.	INCHES			CHK	RW 3/25/03		
		.X	±.1	TITLE	OUTLINE- 56C FRAME TENV- "C" FACE	APPD			
02	ADDED HOLE PLUGS PER ECO 03-617	LST	8/7/03			.XX	±.03	SCALE	3=8
01	REVISED NAMEPLATE	JJK	7/24/03			.XXXX	±.0005	REF	034991
NO.	REVISION	BY & DATE	CHK	ANG	±1/2"	FINISH			
THIS DRAWING IN DESIGN AND DETAIL IS OUR PROPERTY AND MUST NOT BE USED EXCEPT IN CONNECTION WITH OUR WORK ALL RIGHTS OF DESIGN AND INVENTION ARE RESERVED THIS IS AN ELECTRONICALLY GENERATED DOCUMENT - DO NOT SCALE THIS PRINT				RFP	CAD FILE	034992	SIZE	DRAWING NO.	REV.
				DIST			A	034992	02

```
ERROR: syntaxerror  
OFFENDING COMMAND: --nostringval--
```

```
STACK:
```

```
/initialize  
-dictionary-  
/Pscript_WinNT_Compact  
-dictionary-
```

VIEW FROM OUTSIDE OF MOTOR AT SWITCH END



	ROTATION FACING LEAD END	L1	L2	JOIN & INSULATE
HIGH VOLT	C.C.W.	T1	T4 T5	T2, T3 T8
	C.W.	T1	T4 T8	T2, T3 T5
LOW VOLT	C.C.W.	T1, T3 T8	T2, T4 T5	
	C.W.	T1, T3 T5	T2, T4 T8	

		TOLERANCES UNLESS SPECIFIED	
		DEC.	INCHES
		.X	±.1
		.XX	±.01
05	ADDED DECAL FOR STOCK MODELS ECR 0042509	GWS	9/10/13
04	REDRAWN ON CAD	DBT	6/06/97
NO.	REVISION	BY & DATE	CHK ANG
			±1/2'
		RFP	04/18/02
		DIST	BRF



ELECTRIC MOTORS
GEARMOTORS
AND DRIVES

DRAWN	PG 01/09/88
CHK	
APPD	DJW 01/16/88
SCALE	1=1
REF	005242
FMF	6C17WB1
PREV	

TITLE	EXTERNAL WIRING DIAGRAM TYPE "C" W/O PROTECTOR
MAT'L.	DECAL - 004012
FINISH STOCK MODELS TO USE DECAL	214-0122-001

THIS DRAWING IN DESIGN AND DETAIL IS OUR PROPERTY AND MUST NOT BE USED EXCEPT IN CONNECTION WITH OUR WORK ALL RIGHTS OF DESIGN AND INVENTION ARE RESERVED THIS IS AN ELECTRONICALLY GENERATED DOCUMENT - DO NOT SCALE THIS PRINT

RFP	04/18/02	CAD FILE	00527801	SIZE	DRAWING NO.	REV.
DIST	BRF			A	005278-01	05

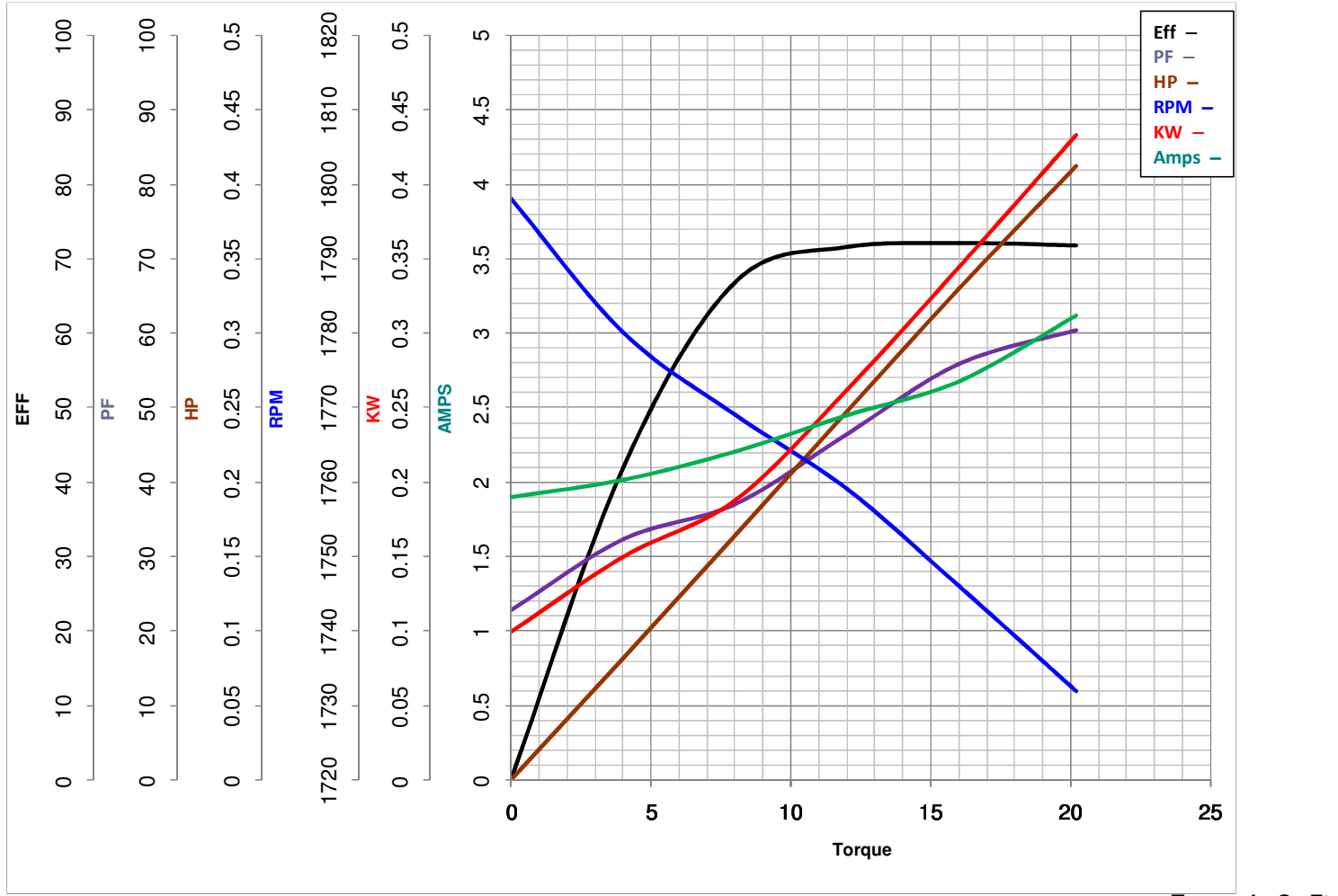


LEESON ELECTRIC CORPORATION
TYPICAL PERFORMANCE CURVE for AC MOTOR

Model No 116349.00

Catalog No 116349.00

Curve at 230 Volts HP 0.34 PHASE 1
60 HZ
0.33 HP VOLTS 115/208-230
HZ 60 RPM 1725



FL TORQUE	<u>16</u>	Oz.Ft	FL AMPS	<u>5.4/3-2.7</u>
BD TORQUE	<u>45.0</u>	Oz.Ft	PU TORQUE	<u>40.0</u> Oz.Ft
LR TORQUE	<u>62</u>	Oz.Ft	LR AMPS	<u>16</u>
WINDING	C634301-3		Date	3/26/2018