

PRODUCT INFORMATION PACKET



Model No: NZ6C17VC2C

Catalog No: 116350.00

1/2HP..1725RPM.56.TENV./V.1PH.60HZ.CONT.NOT.40C.1.15SF.C FACE.WASHGUARD-ALL
STAINLESS.NZ6C17VC2C

1 Phase



Regal and Leeson are trademarks of Regal Beloit Corporation or one of its affiliated companies.

©2018 Regal Beloit Corporation, All Rights Reserved. MC017097E



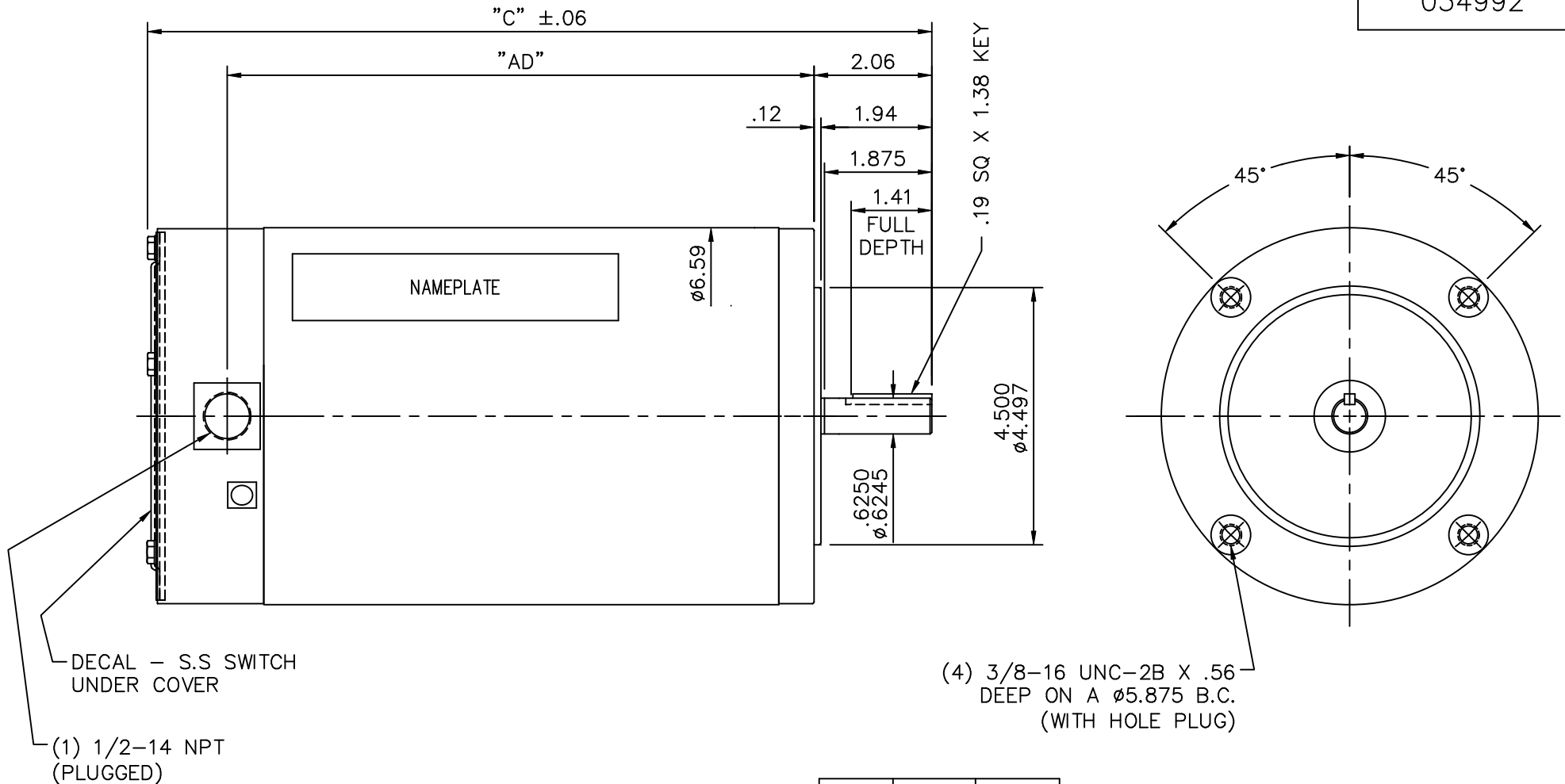


Nameplate Specifications

Output HP	0.50 Hp	Output KW	0.37 kW
Frequency	60 Hz	Voltage	115/208-230 V
Current	6.8/3.4-3.4 A	Speed	1725 rpm
Service Factor	1.15	Phase	1
Efficiency	74 %	Duty	Continuous
Insulation Class	F	Design Code	L
KVA Code	L	Frame	56C
Enclosure	Totally Enclosed Non Ventilated	Overload Protector	No
Ambient Temperature	40 °C	Drive End Bearing Size	6205
Opp Drive End Bearing Size	6203	UL	No
CSA	Y	CE	N
IP Code	55		

Technical Specifications

Electrical Type	Capacitor Start Induction Run	Starting Method	Across The Line
Poles	4	Rotation	Selective Counterclockwise
Mounting	Round	Motor Orientation	HORIZONTAL
Drive End Bearing	BALL	Opp Drive End Bearing	BALL
Frame Material	Rolled Steel	Shaft Type	NEMA 56
Overall Length	12.70 in	Frame Length	8.00 in
Shaft Diameter	0.625 in	Shaft Extension	1.88 in
Assembly/Box Mounting	F1 ONLY		
Outline Drawing	034992-800	Connection Diagram	005278.01



DECAL - S.S SWITCH UNDER COVER
 (1) 1/2-14 NPT (PLUGGED)

(4) 3/8-16 UNC-2B X .56 DEEP ON A ø5.875 B.C. (WITH HOLE PLUG)

SPECIAL FEATURES:
 VITON CONDUIT BOX & COVER GASKETS
 VITON O-RINGS IN ENDBELL RABBETS
 VITON SHAFT SEAL
 BREATHER PLUGS IN L.E. ENDBELL (B.I.C.B.)
 ALL STAINLESS STEEL CONSTRUCTION

DASH NO.	"C"	"AD"
700	11.70	8.25
750	12.20	8.75
800	12.70	9.25
850	13.20	9.75
900	13.70	10.25

MAXIMUM FACE RUNOUT TO BE .004 T.I.R.
 MAXIMUM PILOT ECCENTRICITY .004 T.I.R.
 PERMISSIBLE SHAFT RUNOUT .002 T.I.R.

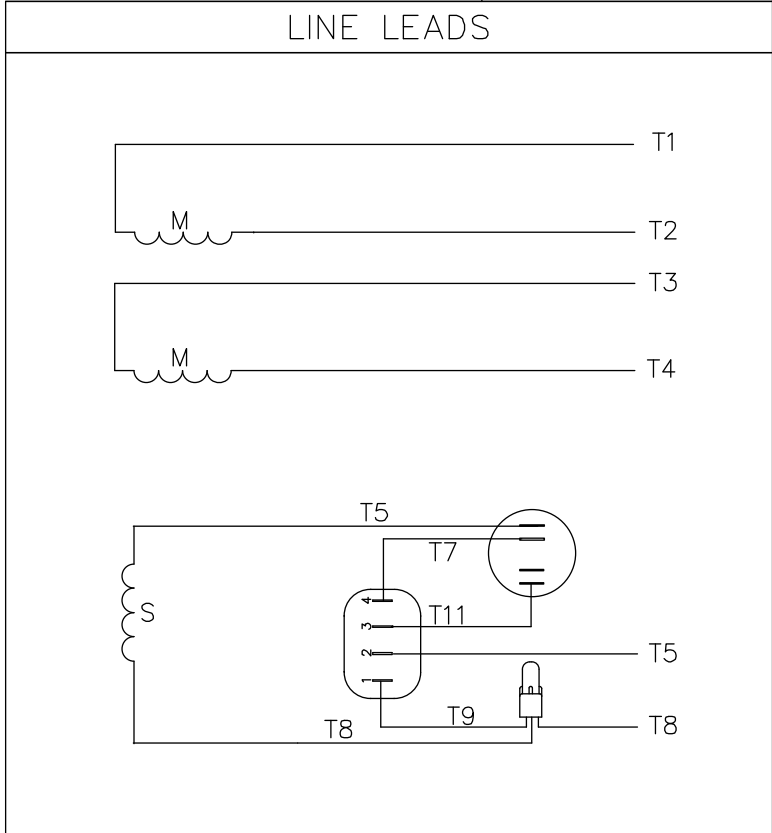
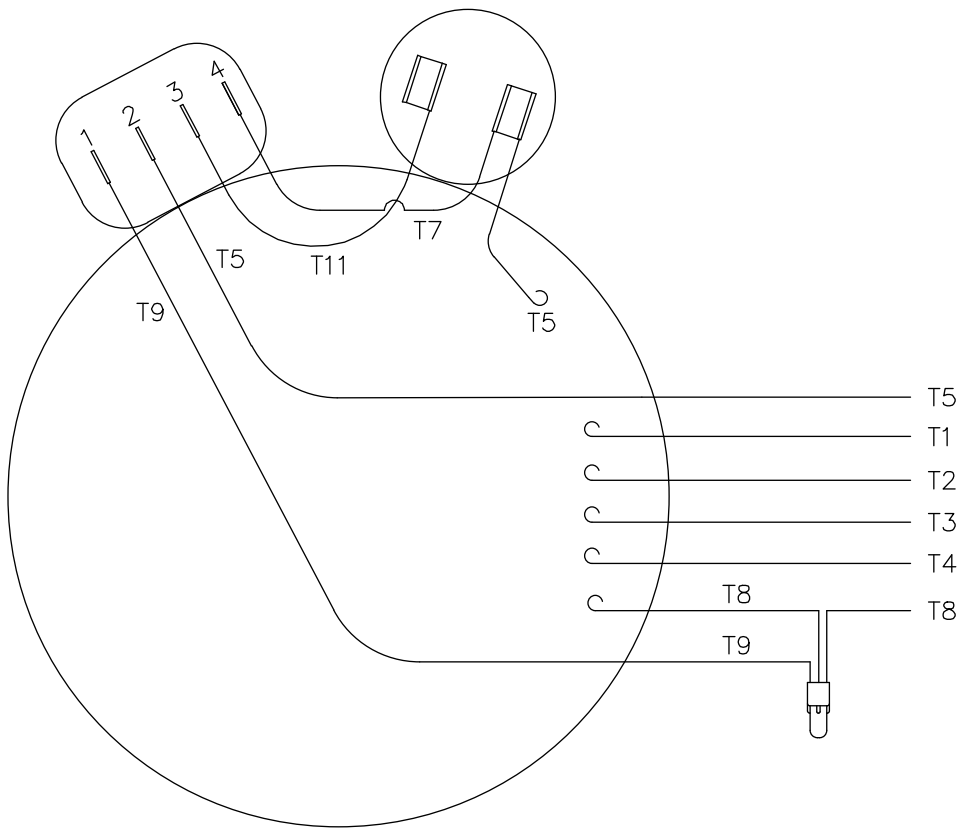
		TOLERANCES UNLESS SPECIFIED		LEESON	ELECTRIC MOTORS GEARMOTORS AND DRIVES	DRAWN	LST 3/25/03		
		DEC.	INCHES			CHK	RW 3/25/03		
		.X	±.1	TITLE	OUTLINE- 56C FRAME TENV- "C" FACE	APPD			
		.XX	±.03			SCALE	3=8		
02	ADDED HOLE PLUGS PER ECO 03-617	LST	8/7/03			.XXX	±.005	REF	034991
01	REVISED NAMEPLATE	JJK	7/24/03			.XXXX	±.0005	FMF	116349
NO.	REVISION	BY & DATE	CHK	ANG	±1/2"	FINISH	PREV		
THIS DRAWING IN DESIGN AND DETAIL IS OUR PROPERTY AND MUST NOT BE USED EXCEPT IN CONNECTION WITH OUR WORK ALL RIGHTS OF DESIGN AND INVENTION ARE RESERVED THIS IS AN ELECTRONICALLY GENERATED DOCUMENT - DO NOT SCALE THIS PRINT				RFP	CAD FILE	034992	SIZE	DRAWING NO.	REV.
				DIST			A	034992	02

```
ERROR: syntaxerror  
OFFENDING COMMAND: --nostringval--
```

```
STACK:
```

```
/initialize  
-dictionary-  
/Pscript_WinNT_Compact  
-dictionary-
```

VIEW FROM OUTSIDE OF MOTOR AT SWITCH END



	ROTATION FACING LEAD END	L1	L2	JOIN & INSULATE
HIGH VOLT	C.C.W.	T1	T4 T5	T2, T3 T8
	C.W.	T1	T4 T8	T2, T3 T5
LOW VOLT	C.C.W.	T1, T3 T8	T2, T4 T5	
	C.W.	T1, T3 T5	T2, T4 T8	

NO.	REVISION	BY & DATE	CHK	ANG	TOLERANCES UNLESS SPECIFIED	
					DEC.	INCHES
					.X	±.1
					.XX	±.01
05	ADDED DECAL FOR STOCK MODELS ECR 0042509	GWS 9/10/13			.XXX	±.005
04	REDRAWN ON CAD	DBT 6/06/97			.XXXX	±.0005
					±1/2'	



ELECTRIC MOTORS
GEARMOTORS
AND DRIVES

DRAWN	PG 01/09/88
CHK	
APPD	DJW 01/16/88
SCALE	1=1
REF	005242
FMF	6C17WB1
PREV	

TITLE	EXTERNAL WIRING DIAGRAM TYPE "C" W/O PROTECTOR
MAT'L.	DECAL - 004012
FINISH STOCK MODELS TO USE DECAL	214-0122-001

THIS DRAWING IN DESIGN AND DETAIL IS OUR PROPERTY AND MUST NOT BE USED EXCEPT IN CONNECTION WITH OUR WORK ALL RIGHTS OF DESIGN AND INVENTION ARE RESERVED THIS IS AN ELECTRONICALLY GENERATED DOCUMENT - DO NOT SCALE THIS PRINT

RFP	04/18/02
DIST	BRF

CAD FILE	00527801
----------	----------

SIZE	DRAWING NO.	REV.
A	005278-01	05



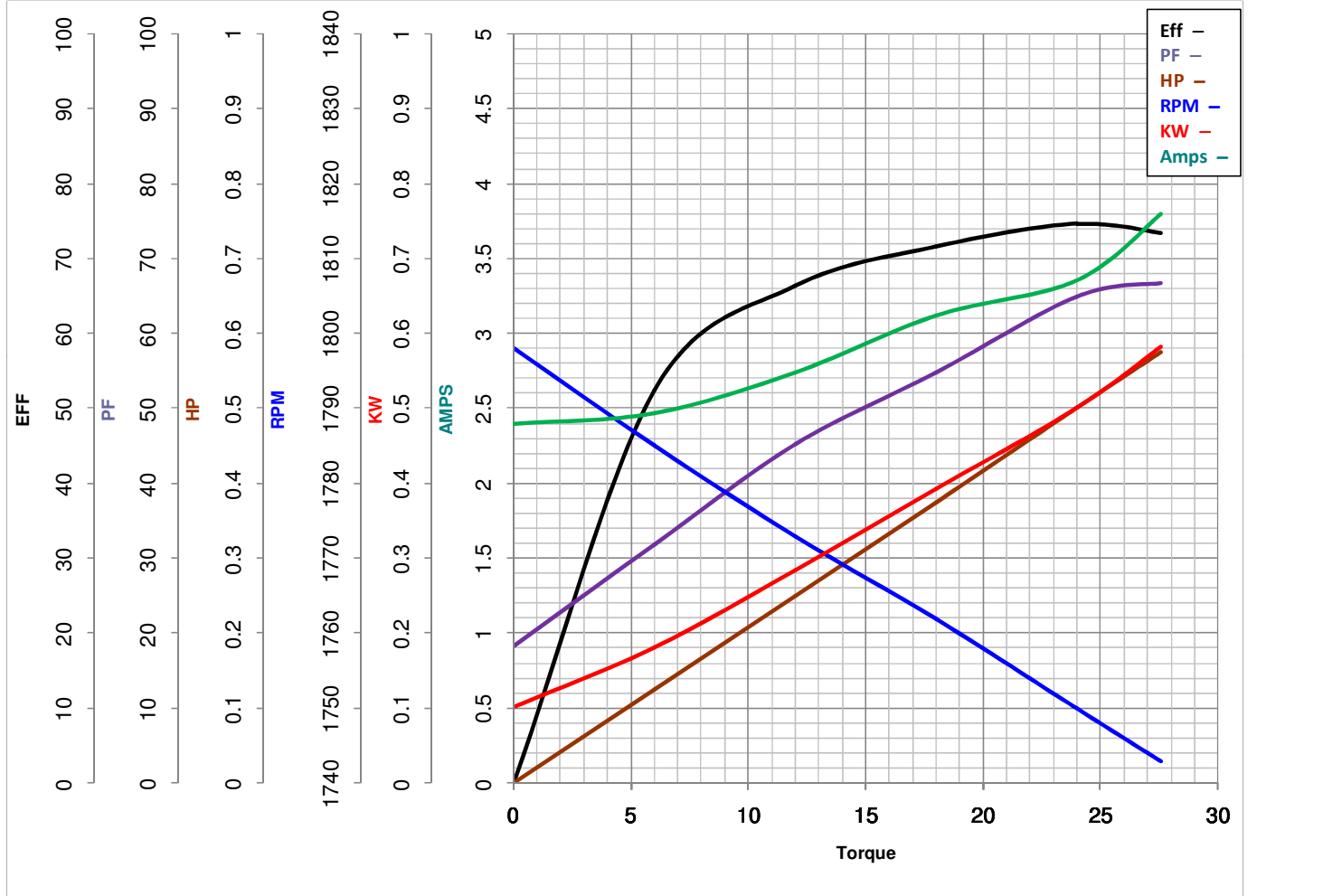
LEESON ELECTRIC CORPORATION
TYPICAL PERFORMANCE CURVE for AC MOTOR

Model No 116350.00

Curve at 230 Volts HP 0.50 PHASE 1
60 HZ
0.5 HP VOLTS 115/208-230

Catalog No 116350.00

HZ 60 RPM 1725



FL TORQUE	<u>24</u>	Oz.Ft	FL AMPS	<u>6.8/3.4-3.4</u>
BD TORQUE	<u>64.0</u>	Oz.Ft	PU TORQUE	<u>60.0</u> Oz.Ft
LR TORQUE	<u>82</u>	Oz.Ft	LR AMPS	<u>20.5</u>
WINDING	C634289-3		Date	4/12/2018