

# PRODUCT INFORMATION PACKET



Model No: SRF4S0.33TC61Q20  
Catalog No: LM10336  
1/3,1800,TEFC,56C,3/60/230/460  
2000:1 With Encoder Provision



Regal and Leeson are trademarks of Regal Beloit Corporation or one of its affiliated companies.  
©2018 Regal Beloit Corporation, All Rights Reserved. MC017097E



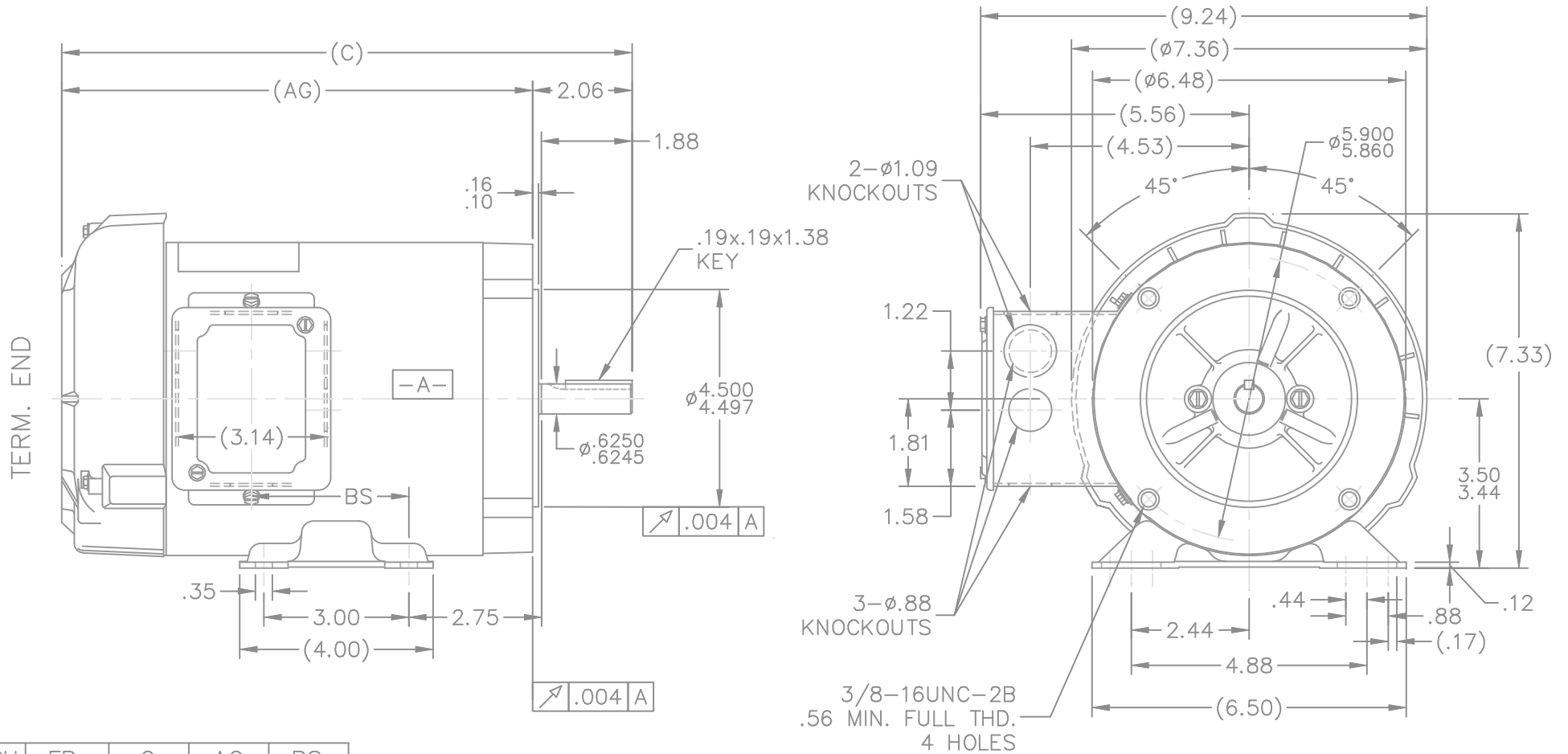


### Nameplate Specifications

Output HP	<b>0.33 Hp</b>	Output KW	<b>0.25 kW</b>
Frequency	<b>60 Hz</b>	Voltage	<b>230/460 V</b>
Current	<b>1.6/0.80 A</b>	Speed	<b>1725 rpm</b>
Service Factor	<b>1</b>	Phase	<b>3</b>
Efficiency	<b>65.5 %</b>	Duty	<b>Continuous</b>
Insulation Class	<b>F</b>	Design Code	<b>INV</b>
KVA Code	<b>P</b>	Frame	<b>56C-60</b>
Enclosure	<b>Totally Enclosed Fan Cooled</b>	Overload Protector	<b>No</b>
Ambient Temperature	<b>40 °C</b>	Drive End Bearing Size	<b>203</b>
Opp Drive End Bearing Size	<b>203</b>	UL	<b>Recognized</b>
CSA	<b>Y</b>	CE	<b>N</b>
IP Code	<b>43</b>		

### Technical Specifications


Electrical Type	<b>Squirrel Cage Inverter Duty</b>	Starting Method	<b>Inverter Only</b>
Poles	<b>4</b>	Rotation	<b>Reversible</b>
Mounting	<b>Rigid base</b>	Motor Orientation	<b>HORIZONTAL</b>
Drive End Bearing	<b>BALL</b>	Opp Drive End Bearing	<b>BALL</b>
Frame Material	<b>Rolled Steel</b>	Shaft Type	<b>T</b>
Overall Length	<b>11.31 in</b>	Frame Length	<b>6.06 in</b>
Shaft Diameter	<b>0.625 in</b>	Shaft Extension	<b>1.88 in</b>
Assembly/Box Mounting	<b>F1 ONLY</b>		
Outline Drawing	<b>A-100110LN-606</b>	Connection Diagram	<b>A-EE7308T-LN</b>



- NOTES:
1. CONDUIT BOX CAN BE ROTATED 180°.
  2. NAMEPLATE READ FROM CONDUIT BOX SIDE OF MOTOR.

DASH	FR.	C	AG	BS
606	56-60	11.31	9.25	2.75
656	56-65	11.81	9.75	3.25
706	56-70	12.31	10.25	3.75
756	56-75	12.81	10.75	4.25

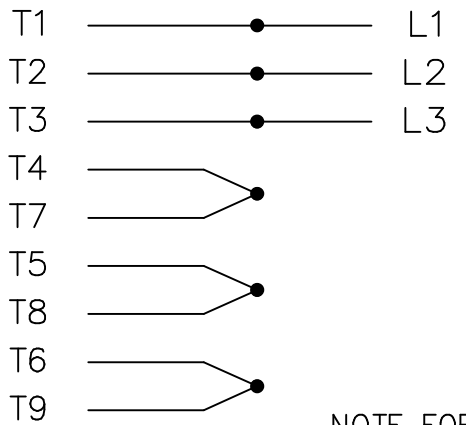
06-01-2000

		TOLERANCES UNLESS SPECIFIED				DRAWN BLR 06-10-1999	
		DEC.	INCHES			CHK ML 06-18-1999	
		.X	±.1	APPD GK 06-18-1999			
		.XX	±.03	TITLE OUTLINE	SCALE 5=16		
2	ADDED NAMEPLATE LOC. CN27400-296	BLR 08-05-1999	.XXX ±.005	56 FRAME - TEFC - C'FACE	REF		
1	NEW DRAWING	BLR 06-18-1999	.XXXX ±.0005	MAT'L.	FMF		
NO.	REVISION	BY & DATE	CHK	ANG ±7'30"	FINISH	PREV	
			RFP 06-18-1999	CAD FILE 100110ln	SIZE A	DRAWING NO. 100110LN	PAGE 1 OF 1
			DIST WP				REV. 2

THIS DRAWING IN DESIGN AND DETAIL IS OUR PROPERTY AND MUST NOT BE USED EXCEPT IN CONNECTION WITH OUR WORK ALL RIGHTS OF DESIGN AND INVENTION ARE RESERVED THIS IS AN ELECTRONICALLY GENERATED DOCUMENT - DO NOT SCALE THIS PRINT

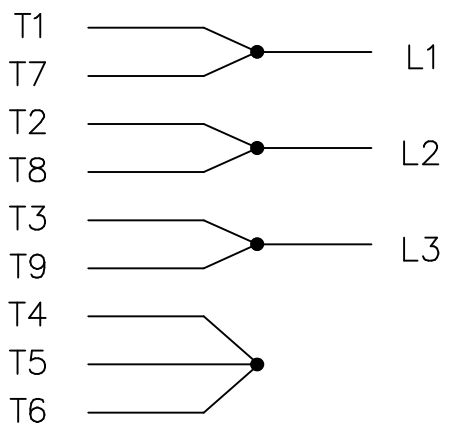
THREE PHASE  
DUAL VOLTAGE MOTOR

HIGH VOLTAGE

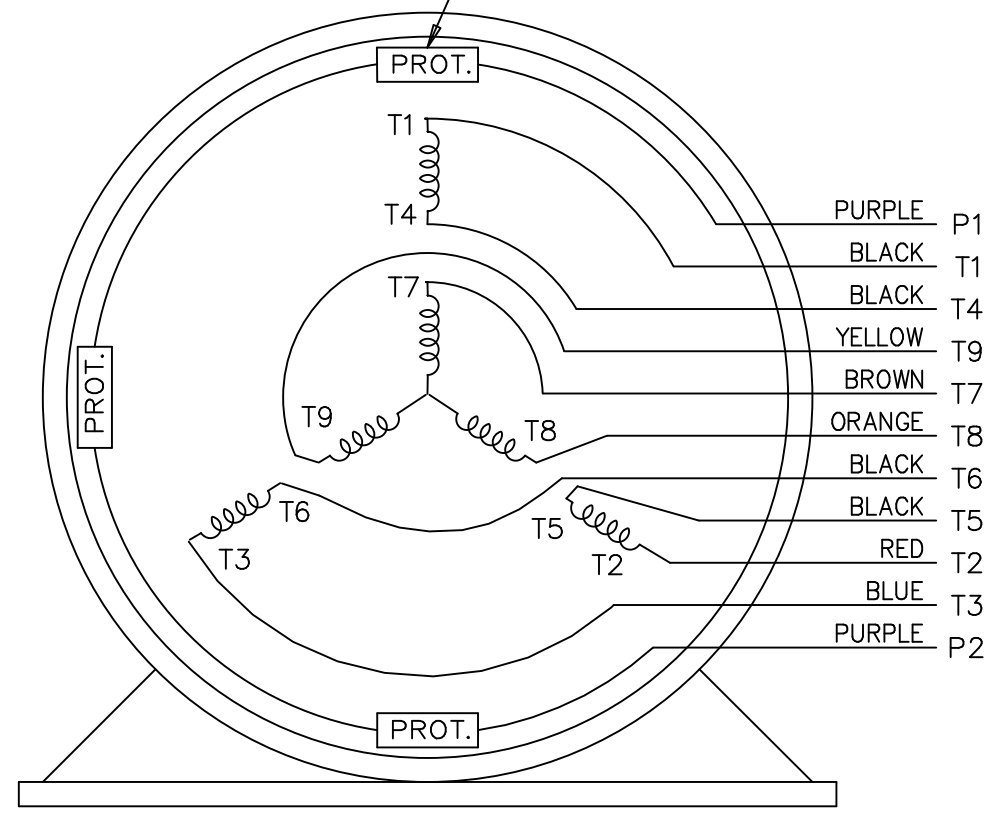


NOTE FOR FACTORY USE ONLY:  
TO SURGE TEST FOR COMMON CONNECT:  
HIGH VOLT: CONNECT P1 TO T1  
THEN P2 TO L1  
LOW VOLT: CONNECT P1 TO T1 & T7,  
THEN P2 TO L1

LOW VOLTAGE



THREMO-PROTECTORS  
CONNECTED IN SERIES.



VIEW OF TERMINAL END

				TOLERANCES UNLESS SPECIFIED			DRAWN BJK 07-16-2002					
				DEC.	INCHES		CHK DRS 07-18-2002					
				.X	±.1		APPD GK 07-18-2002					
					.XX	±.02	SCALE 1=1					
2	ADDED COLORS TO "T & P" LEADS	CN 40494	MSG 08-08-2006	ML	.XXX	±.005	TITLE CONNECTION DIAGRAM 3 PHASE - DUAL VOLTAGE MOTOR					
1	NEW DRAWING		BJK 07-18-2002	DRS	.XXXX	±.0005	MAT'L.					
NO.	REVISION	BY & DATE	CHK	ANG	±7'30"		PREV					
THIS DRAWING IN DESIGN AND DETAIL IS OUR PROPERTY AND MUST NOT BE USED EXCEPT IN CONNECTION WITH OUR WORK ALL RIGHTS OF DESIGN AND INVENTION ARE RESERVED THIS IS AN ELECTRONICALLY GENERATED DOCUMENT - DO NOT SCALE THIS PRINT				RFP	CAD FILE ee7308t_ln			SIZE	DRAWING NO.	PAGE	OF	REV.
				DIST	LB			A	EE7308T-LN			2



Motor Load Data

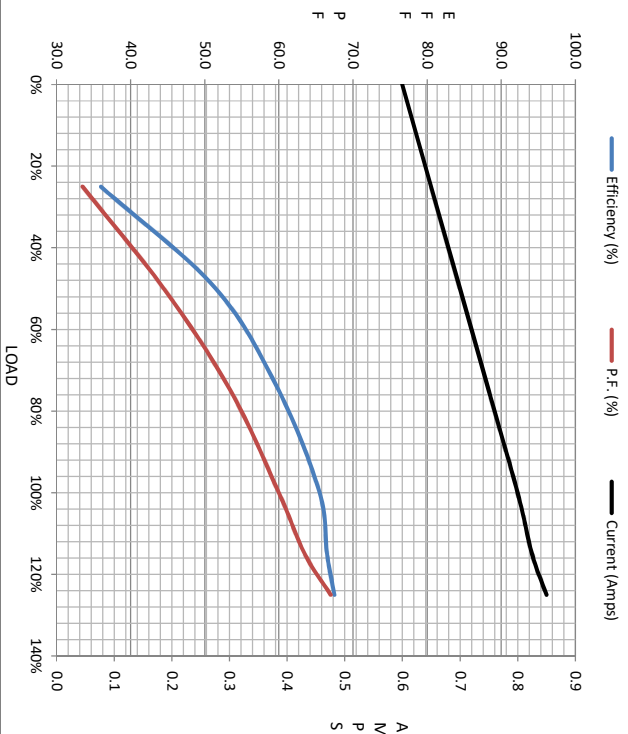
Load	0%	25%	50%	75%	100%	115%	125%	LR
Current (Amps)	0.60	0.65	0.70	0.75	0.80	0.83	0.85	5.3
Torque (ft-lb)	0.00	0.25	0.50	0.75	0.99	1.12	1.25	4.6
RPM	1800	1785	1770	1750	1750	1,744	1735	0
Efficiency (%)		36.0	51.5	60.0	65.5	66.5	67.5	
P.F. (%)	18.0	33.5	44.5	53.5	60.0	63.5	67.0	72.0

Motor Speed Data

	LR	Pull-Up	BD	Rated	Idle
Speed (RPM)	0	500	1150	1750	1800
Current (Amps)	5.3	4.4	3.8	0.80	0.50
Torque (ft-lb)	4.6	3.5	5.5	0.99	0.00

Information Block

HP	0.3
Sync. RPM	1800
Frame	56
Enclosure	TEFC
Construction	TFR
Voltage	230/460 V
Frequency	60 Hz
Design	B
LR Code letter	P
Service Factor	1.15
Temp Rise @ FL	35 °C
Duty	CONT
Ambient	40 °C
Elevation	1,000 feet
Rotor/Shaft wk <sup>2</sup>	0.04 LB-Ft <sup>2</sup>
Ref Wdg	Z14151 R3
Sound Pressure @ 1M	62 dBA
VFD Rating	CONSTANT 100:1
Outline Dwg	A-100110LN-606
Conn. Diag	A-EE7308T-LN
Additional Specifications:	
0	
EQUIV CKT (OHMS / PHASE)	
R1	R2
22.6180	16.6840
X1	X2
25.5420	17.0280
Xm	
	434.3000



Speed -Torque Curve

