

BALDOR® • RELIANCE 

Product Information Packet

SUL50104SM

1HP,1800RPM,1PH,60HZ,180TY,TENV,FOOTLES

Part Detail							
Revision:	A	Status:	PRD/A	Change #:		Proprietary:	No
Type:	AC	Elec. Spec:	A00082A A 001	CD Diagram:		Mfg Plant:	
Mech. Spec:		Layout:	066930-501	Poles:	04	Created Date:	04-09-2015
Base:		Eff. Date:	01-17-2017	Leads:			

Specs			
Catalog Number:	SUL50104SM	Duty Rating:	15 MIN
Enclosure:	TEXP	Heater Indicator:	No Heater
Frame:	180TY	Insulation Class:	F
Frame Material:	Iron	Inverter Code:	Not Inverter
Output @ Frequency:	1.000 @ 60 HZ	KVA Code:	L
Voltage @ Frequency:	115 V @ 60 HZ	Lifting Lugs:	Standard Lifting Lugs
	230 V @ 60 HZ	Motor Type:	CS
XP Class and Group:	None	Mounting Arrangement:	V1
XP Division:	Not Applicable	Product Family:	Other
Agency Approvals:	CCSA US	Pulley End Bearing Type:	Ball
	CSA	Pulley Face Code:	Standard
	UL	Shaft Rotation:	Reversible
Base Indicator:	Rigid	Shaft Slinger Indicator:	No Slinger
Bearing Grease Type:	Polyrex EM (-20F +300F)	Speed Code:	Single Speed
Current @ Voltage:	16.2 A @ 115 V	Motor Standards:	NEMA
	8.10 A @ 230 V	Starting Method:	Direct on line
Design Code:	-	Thermal Device - Winding:	None
Drip Cover:	No Drip Cover	XP Temp Code:	T3C

Nameplate 000613007AC		
CLASS I GROUP	C D X	NO. <input type="text"/>
CLASS II GROUP	X X X	
OPERATING TEMP CODE	T3C	

Nameplate 000613007MN											
CAT NO	SUL50104SM		SPEC NO.	C18G2730							
HP	1	AMPS	16.2/8.10		VOLTS	115/230		DESIGN			
FRAME SIZE	X0180TY		RPM	1730	HZ	60	AMB	40	SF	1.15	
D.E. BRG.	50BC02JPP30A			PH	1	DUTY	15MIN			INSUL	F
O.D.E. BRG.	25BC02JPG30A			TYPE	CS	ENCL	TENV			CODE	L
				POWER FACTOR				NEMA-NOM-EFF			
				MAX CORR KVAR				GUARANTEED EFFICIENCY			
						NEMA NOM/CSA QUOTED EFF @		100% LOAD			
SER.NO.					MOTOR WEIGHT	280		LBS.			
	*15 MIN IN AIR ;SUB. IN										
	SEWAGE / WATER ONLY ONLY;										
	FINAL CONN@230V MAXDEPTH IN										

Nameplate 000613007MR										
CAT NO	SUL50104SM		SPEC NO.	C18G2730						
HP	1	AMPS	16.2/8.10		VOLTS	115/230		DESIGN		
FRAME SIZE	X0180TY		RPM	1730	HZ	60	AMB	40	SF	1.15
D.E. BRG.	50BC02JPP30A		PH	1	DUTY	15MIN		INSUL	F	
O.D.E. BRG.	25BC02JPG30A		TYPE	CS	ENCL	TENV		CODE	L	
			POWER FACTOR		NEMA-NOM-EFF					
			MAX CORR KVAR		GUARANTEED EFFICIENCY					
					NEMA NOM/CSA QUOTED EFF @					
SER.NO.					MOTOR WEIGHT	280	LBS.			
	*15 MIN IN AIR ;SUB. IN									
	SEWAGE / WATER ONLY ONLY;									
	FINAL CONN@230V MAXDEPTH IN									

Nameplate 000692000MB	
MANUAL CW ROT	
C18G2730A	

Parts List		
Part Number	Description	Quantity
SA297499	SA C18G2730	1.000 EA
RA284468	RA C18G2730	1.000 EA
000613000FX	ROTATION NAMEPLATE, STAINLESS STEEL	1.000 EA
000613007AC	UL NAMEPLATE FOR HAZARDOUS LOCATIONS	1.000 EA
000613007MN	NP,MEDIUM AC,NO CERT,STD INDUSTRIAL	1.000 EA
000613007MR	NP, MEDIUM AC, CSA, STD INDUSTRIAL	1.000 EA
000692000EJ	NAME PLATE	1.000 EA
000901001AA	LABEL WARNING	1.000 EA
424476003ZA	WIRING DIAGRAM MEDIUMA	1.000 EA
424476003ZA	WIRING DIAGRAM MEDIUMA	1.000 EA
000692000MB	BALDOR RELIANCE MOTOR DATA NAMEPLATE	1.000 EA
034692002AE	HCSPP 1/4" 304 S.S.	1.000 EA
004824015A	GREASE POLYREX EM	0.100 LB
032018010CG	HHCS 3/8-16X1-1/4L 316SS	4.000 EA
032130008CC	HSHCS 3/8-16 X 1.00" L	4.000 EA
032620020JD	HSSS 10-24X5/8L 304S.S.	1.000 EA
034692003AE	PPLG 3/8" 304 S.S.	2.000 EA
047174005B	SNAP RING	1.000 EA
047174005C	SNAP RING	1.000 EA
064262012B	SEAL	1.000 EA
064262012C	SEAL	1.000 EA
088204001AA	BRKT,DE,180SUB 88204-1WA	1.000 EA
088205002A	SUB PLT 180 88205-2WCB	1.000 EA
413412004A	SUBM MOISTURE PROBE	2.000 EA

Parts List (continued)		
Part Number	Description	Quantity
413412005R	LEAD WIRE ASSY(BLANKET	1.000 EA
413480001R	RESISTOR ASSEMBLY-BLANKET	1.000 EA
421900124FU	ORING	1.000 EA
421900124FU	ORING	1.000 EA
603760001AA	LABYRINTH	1.000 EA
032018006BM	HHCS 5/16-18X3/4 PLTGRN.	1.000 EA
032018006BM	HHCS 5/16-18X3/4 PLTGRN.	1.000 EA
034036013AB	LCKW 5/16 EXT.TOOTH LCKW	1.000 EA
047024003AH	T/LUG AMP 34112	4.000 EA
032018008BG	HHCS 5/16-18X1 BRASS-447	4.000 EA
032080003LB	HWHMS 1/4-20X3/8L PLTED	6.000 EA
032080003JB	HWHMS 10-24X3/8L PLTED	4.000 EA
415031017A	NUT W/WASHER 10-24 C.PLT	4.000 EA
415031017B	NUT W/WASHER1/4-20 C.P	6.000 EA
701455002BP	CONTROL BOX	1.000 EA
047024017A	QUICK CONN. 19008-002	2.000 EA
047024003B	T/LUG AMP 33218	9.000 EA
421900072FU	ORING	1.000 EA
609181014D	HEAT SHRINK TUBING 3/4	10.000 EA
700385017F	CCA #8 25' 180	1.000 EA
004824007K	SPECIAL PAINT	0.100 EA
033775004EA	DRSCR #6-1/4 304 S.S.	4.000 EA
034180008CD	3/16 SQ. X 1IN. KEY	1.000 EA
032375012GB	HSOSS 6-32X1-1/2~ PLATED	4.000 EA

Product Information Packet: SUL50104SM - 1HP,1800RPM,1PH,60HZ,180TY,TENV,FOOTLES

034017007AB	LCKW NO.6 PLATED	4.000 EA
088203012A	BRKT,ODE,180SUB	1.000 EA
411140000AA	SWITCH ASSY SUBMERSIBLE	2.000 EA
413412007R	LEAD WIRE SWITCH	2.000 EA
421900124FU	ORING	1.000 EA
004824018AF	SHELL ROTELLA OIL 10W	1.500 LB
032018006AG	HHCS 1/4-20X3/4L 316 SS	3.000 EA
032018010CG	HHCS 3/8-16X1-1/4L 316SS	4.000 EA
000901001AA	LABEL WARNING	1.000 EA
B3630-9	SUBM THERMOSTAT TAG	1.000 EA
B-3664002	TAG, (NON REGREASABLE)	1.000 EA

REL. S.O.	FRAME	HP	TYPE	PHASE/ HERTZ	RPM	VOLTS
-	180TY	1	CS	1/60	1730	115/230
AMPS	DUTY	AMB °C/ INSTL.	S.F.	NEMA DESIGN	CODE LETTER	ENCL.
16.2/8.1	*	40/F	1.15	-	L	SUB
E/S	ROTOR	TEST S.O.	TEST DATE	STATOR RES. @25 °C (BETWEEN LINES)		
781036	-	-	-	1.955/7.59		

PERFORMANCE


LOAD	HP	AMPERES	RPM	INPUT KW	POWER FACTOR	% EFFI- CIENCY
NO LOAD	0	5.1	1800	.466	39.8	0
1/4	.25	5.6	1771	.654	51.0	28.5
2/4	.50	6.2	1758	.874	60.8	42.7
3/4	.75	7.1	1744	1.11	67.9	50.6
4/4	1.00	8.1	1728	1.36	72.9	55.0
5/4	1.25	9.3	1709	1.63	77.1	57.2

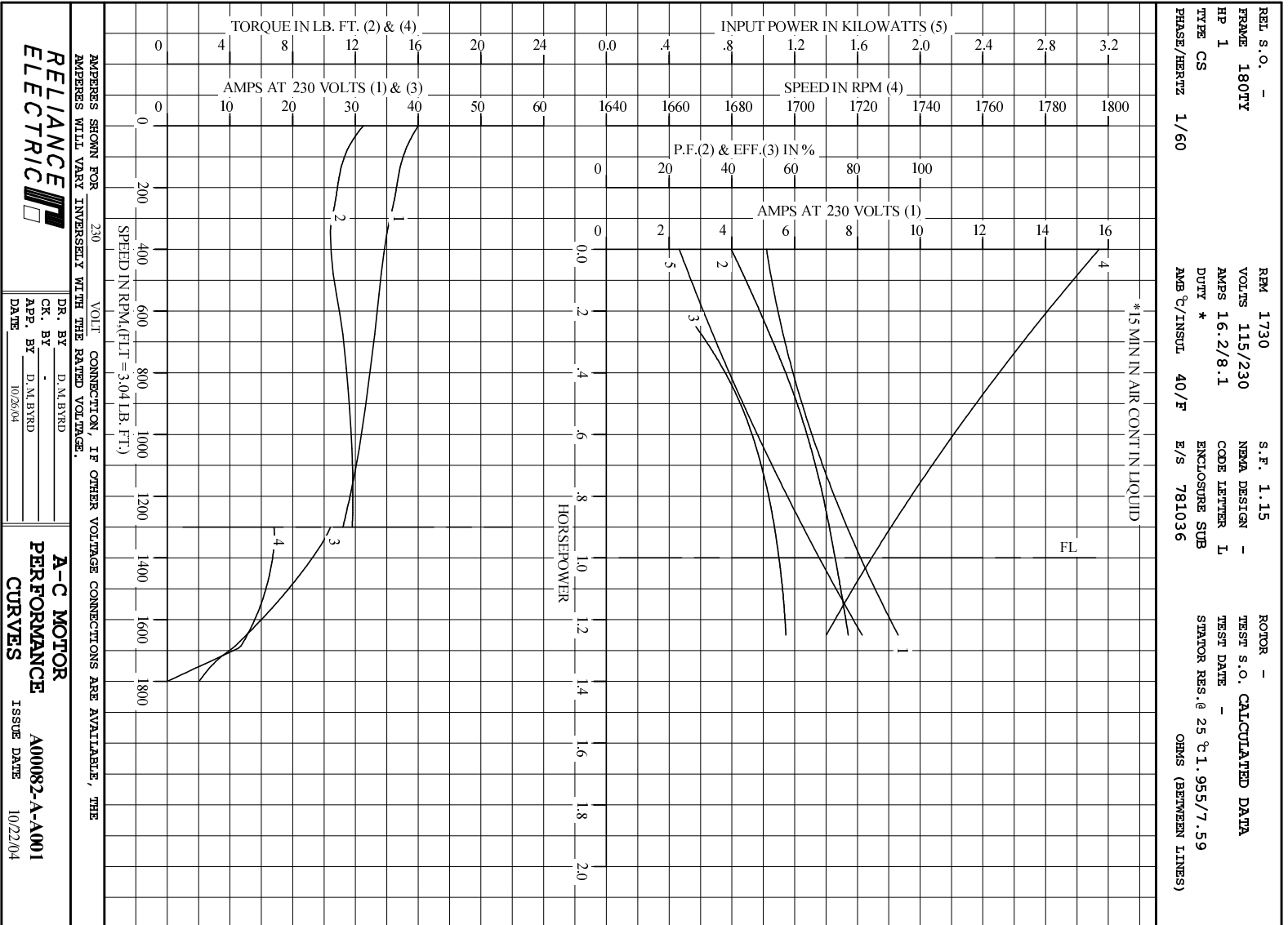
SPEED TORQUE

	RPM	TORQUE % FULL LOAD	TORQUE LB.-FT.	AMPERES
LOCKED ROTOR	0	411	12.5	40.0
PULL UP	1300	388	11.8	28.0
BREAKDOWN	1368	224	6.80	24.2
FULL LOAD	1728	100	3.04	8.1

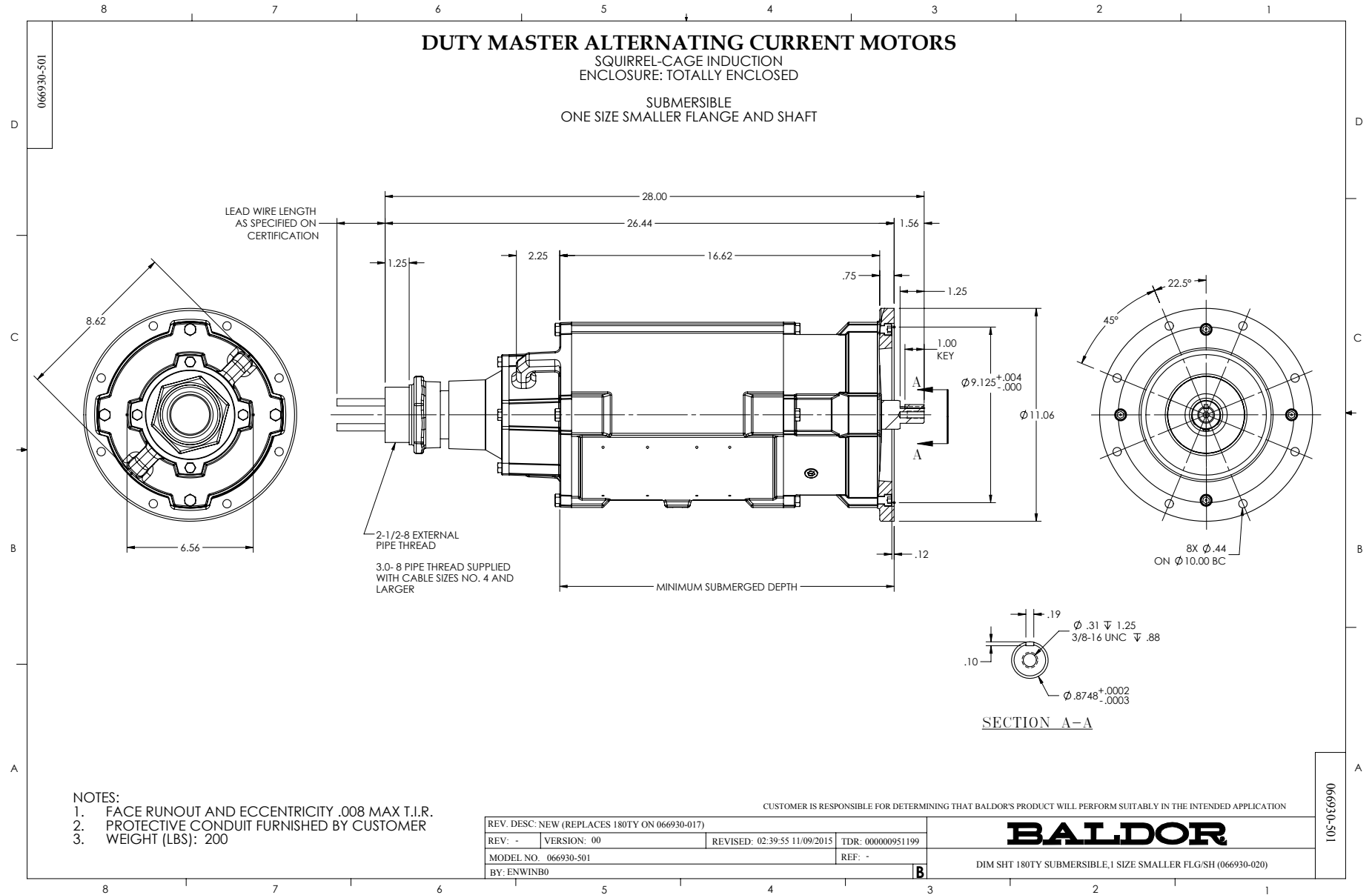
AMPERES SHOWN FOR 230. VOLT CONNECTION. IF OTHER VOLTAGE CONNECTIONS ARE AVAILABLE, THE AMPERES WILL VARY INVERSELY WITH THE RATED VOLTAGE

REMARKS : CALCULATED DATA
*15 MIN IN AIR CONT IN LIQUID

	DR. BY	D. M. BYRD	A-C MOTOR PERFORMANCE DATA A00082-A-A001 ISSUE DATE 10/22/04
	CK. BY	-	
	APP. BY	D. M. BYRD	
DATE		10/26/04	



Printed on 4/22/07 20:27 @ psccs-motoreng



Marketing maintained PDF of MN414:

<http://www.baldor.com/support/Literature/Load.ashx/MN414?ManNumber=MN414>

