

BALDOR® • RELIANCE 

Product Information Packet

SUM71004-4

10HP,1755RPM,3PH,60HZ,210TY,TENV,FOOTLE

Part Detail							
Revision:	-	Status:	PRD/A	Change #:		Proprietary:	No
Type:	AC	Elec. Spec:	E02263L AW017	CD Diagram:	416820-001	Mfg Plant:	
Mech. Spec:		Layout:	066930-502	Poles:	04	Created Date:	04-09-2015
Base:		Eff. Date:	04-13-2015	Leads:			

Specs			
Catalog Number:	SUM71004-4	Duty Rating:	15 MIN
Enclosure:	XPNV	Heater Indicator:	No Heater
Frame:	210TY	Insulation Class:	F
Frame Material:	Iron	Inverter Code:	Inverter Ready
Output @ Frequency:	10.000 @ 60 HZ	KVA Code:	G
Voltage @ Frequency:	230 V @ 60 HZ	Lifting Lugs:	Vertical Lifting Lugs
	460 V @ 60 HZ	Motor Type:	M
XP Class and Group:	CLI GP C,D	Mounting Arrangement:	V1
XP Division:	Division I	Product Family:	Other
Agency Approvals:	CCSA US	Pulley End Bearing Type:	Ball
	CSA	Pulley Face Code:	D-Flange
	UL	Shaft Rotation:	Reversible
Base Indicator:	No Mounting	Shaft Slinger Indicator:	No Slinger
Bearing Grease Type:	Polyrex EM (-20F +300F)	Speed Code:	Single Speed
Current @ Voltage:	13.0 A @ 460 V	Motor Standards:	NEMA
	26.0 A @ 230 V	Starting Method:	Direct on line
Design Code:	B	Thermal Device - Winding:	Normally Closed Thermostat
Drip Cover:	No Drip Cover	XP Temp Code:	T3C

Nameplate 000613007AC		
CLASS I GROUP	C D X	NO. <input type="text"/>
CLASS II GROUP	X X X	
OPERATING TEMP CODE	T3C	

Nameplate 000613007MN										
CAT NO	SUM71004-4		SPEC NO.	P21G2702						
HP	10	AMPS	26.0/13.0		VOLTS	230/ 460		DESIGN	B	
FRAME SIZE	X210TY	RPM	1755		HZ	60	AMB	40	SF	1.15
D.E. BRG.	60BC02JPP30A		PH	3	DUTY	*		INSUL	F	
O.D.E. BRG.	30BC02JPG30A		TYPE	P	ENCL	TENV		CODE	G	
			POWER FACTOR			NEMA-NOM-EFF				
			MAX CORR KVAR			GUARANTEED EFFICIENCY				
					NEMA NOM/CSA QUOTED EFF @			100% LOAD		
SER.NO.			MOTOR WEIGHT	380		LBS.				
	FINAL CONN@ 460V *15 MIN IN									
	AIR ;SUB.IN WATER/SEWAGE ONLY									
	SEE MANUAL FOR MAXDEPTH;									

Nameplate 000613007MR										
CAT NO	SUM71004-4		SPEC NO.	P21G2702						
HP	10	AMPS	26.0/13.0		VOLTS	230/ 460		DESIGN	B	
FRAME SIZE	X210TY	RPM	1755		HZ	60	AMB	40	SF	1.15
D.E. BRG.	60BC02JPP30A		PH	3	DUTY	*		INSUL	F	
O.D.E. BRG.	30BC02JPG30A		TYPE	P	ENCL	TENV		CODE	G	
			POWER FACTOR			NEMA-NOM-EFF				
			MAX CORR KVAR			GUARANTEED EFFICIENCY				
					NEMA NOM/CSA QUOTED EFF @			100% LOAD		
SER.NO.			MOTOR WEIGHT	380		LBS.				
	FINAL CONN@ 460V *15 MIN IN									
	AIR ;SUB.IN WATER/SEWAGE ONLY									
	SEE MANUAL FOR MAXDEPTH;									

Parts List		
Part Number	Description	Quantity
SA297409	SA P21G2702	1.000 EA
RA284378	RA P21G2702	1.000 EA
000613007AC	UL NAMEPLATE FOR HAZARDOUS LOCATIONS	1.000 EA
000613007MN	NP,MEDIUM AC,NO CERT,STD INDUSTRIAL	1.000 EA
000613007MR	NP, MEDIUM AC, CSA, STD INDUSTRIAL	1.000 EA
000692000EJ	NAME PLATE	1.000 EA
000901001AA	LABEL WARNING	1.000 EA
001575000A	WIRING DIAGRAM	1.000 EA
424476003WB	WIRING DIAGRAM MEDIUMA	1.000 EA
034692002AE	HCSPP 1/4" 304 S.S.	1.000 EA
004824015A	GREASE POLYREX EM	0.100 LB
032018012DG	HHCS 1/2-13X1-1/2 316S.S	4.000 EA
032130010DC	HSHCS 1/2-13X1-1/4 304SS	4.000 EA
032620020JD	HSSS 10-24X5/8L 304S.S.	1.000 EA
034692003AE	PPLG 3/8" 304 S.S.	2.000 EA
047174005C	SNAP RING	1.000 EA
047174005D	SNAP RING	1.000 EA
064262012C	SEAL	1.000 EA
064262012D	SEAL	1.000 EA
088207001AA	BRKT,DE,210SUB 88207-1WA	1.000 EA
088208001AA	MTG PLATE EX210Y SUBMERSIBLE 088208001WB	1.000 EA
413412004A	SUBM MOISTURE PROBE	2.000 EA
413412005S	LEAD WIRE ASSY(BLANKET	1.000 EA
413480001R	RESISTOR ASSEMBLY-BLANKET	1.000 EA

Parts List (continued)		
Part Number	Description	Quantity
421900144FU	ORING	1.000 EA
421900144FU	ORING	1.000 EA
603761001AA	LABYRINTH	1.000 EA
032018006BM	HHCS 5/16-18X3/4 PLTGRN.	1.000 EA
032018006BM	HHCS 5/16-18X3/4 PLTGRN.	1.000 EA
032018010CG	HHCS 3/8-16X1-1/4L 316SS	4.000 EA
032080003JB	HWHMS 10-24X3/8L PLTED	4.000 EA
032080003LB	HWHMS 1/4-20X3/8L PLTED	6.000 EA
034036013AB	LCKW 5/16 EXT.TOOTH LCKW	1.000 EA
047024003AH	T/LUG AMP 34112	4.000 EA
047024003B	T/LUG AMP 33218	9.000 EA
415031017A	NUT W/WASHER 10-24 C.PLT	4.000 EA
415031017B	NUT W/WASHER1/4-20 C.P	6.000 EA
421900092FU	ORING	1.000 EA
609181014D	HEAT SHRINK TUBING 3/4	10.000 EA
700385014M	CCA #8 25' 210/250	1.000 EA
004824007K	SPECIAL PAINT	0.100 EA
033775004EA	DRSCR #6-1/4 304 S.S.	4.000 EA
034180009FD	KEY 3/8X3/8X1-1/8 303 SS	1.000 EA
088206001AB	BRKT,ODE,210SUB 88206-1WB	1.000 EA
421900144FU	ORING	1.000 EA
004824018AF	SHELL ROTELLA OIL 10W	2.500 LB
032018008BG	HHCS 5/16-18X1 BRASS-447	3.000 EA
032018012DG	HHCS 1/2-13X1-1/2 316S.S	4.000 EA

000901001AA	LABEL WARNING	1.000 EA
B3630-9	SUBM THERMOSTAT TAG	1.000 EA
B-3664002	TAG, (NON REGREASABLE)	1.000 EA

REL. S.O.	FRAME	HP	TYPE	PHASE/HERTZ	RPM	VOLTS
	210TY	10	P	3/60	1755	230/460
AMPS	DUTY	AMB °C/ INSUL.	S.F.	NEMA DESIGN	CODE LETTER	ENCL.
26/13	*	40/F	1.15	B	G	SUB
E/S	ROTOR	TEST S.O.	TEST DATE	STATOR RES (25 °C OHMS (BETWEEN LINES))		
534499	418425-43FE	---	---	.339/1.35		

PERFORMANCE

LOAD	HP	AMPERES	RPM	INPUT KW	POWER FACTOR	% EFFICIENCY
NO LOAD	0	4.8	1800	.609	15.9	0
1/4	2.51	5.8	1789	2.52	54.2	74.2
2/4	5.00	7.8	1779	4.50	72.8	83.0
3/4	7.50	10.2	1768	6.56	80.6	85.3
4/4	10.0	13.0	1756	8.71	84.1	85.6
5/4	12.5	16.1	1742	11.0	85.4	84.8

SPEED TORQUE

	RPM	TORQUE % FULL LOAD	TORQUE LB.-FT.	AMPERES
LOCKED ROTOR	0	184	55.0	76.0
PULL UP	180	174	52.0	74.7
BREAKDOWN	1561	254	76.0	44.8
FULL LOAD	1756	100	29.9	13.0

AMPERES SHOWN FOR 460. VOLT CONNECTION. IF OTHER VOLTAGE CONNECTIONS ARE AVAILABLE, THE AMPERES WILL VARY INVERSELY WITH THE RATED VOLTAGE

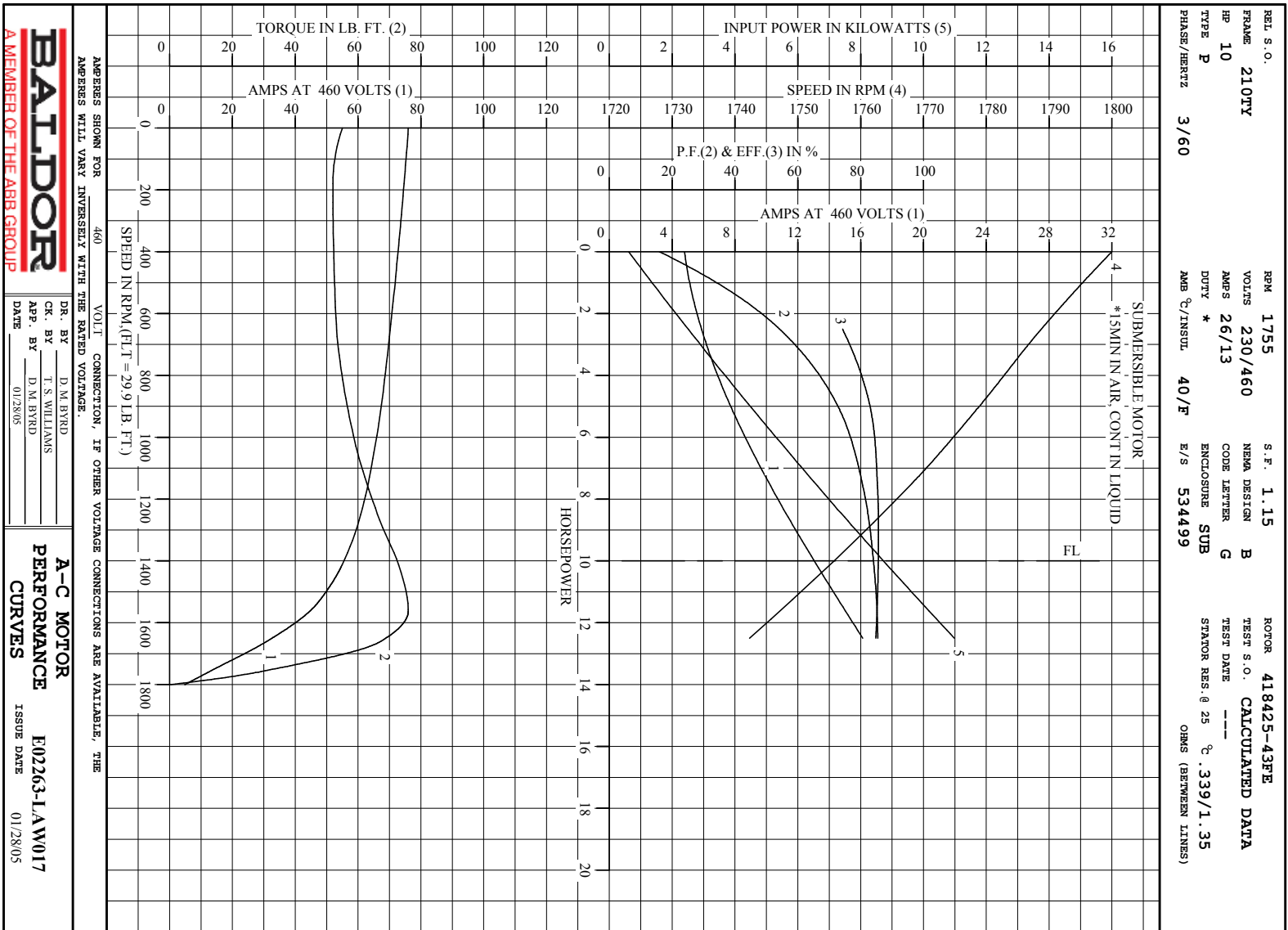
REMARKS: CALCULATED DATA
SUBMERSIBLE MOTOR
*15MIN IN AIR, CONT IN LIQUID



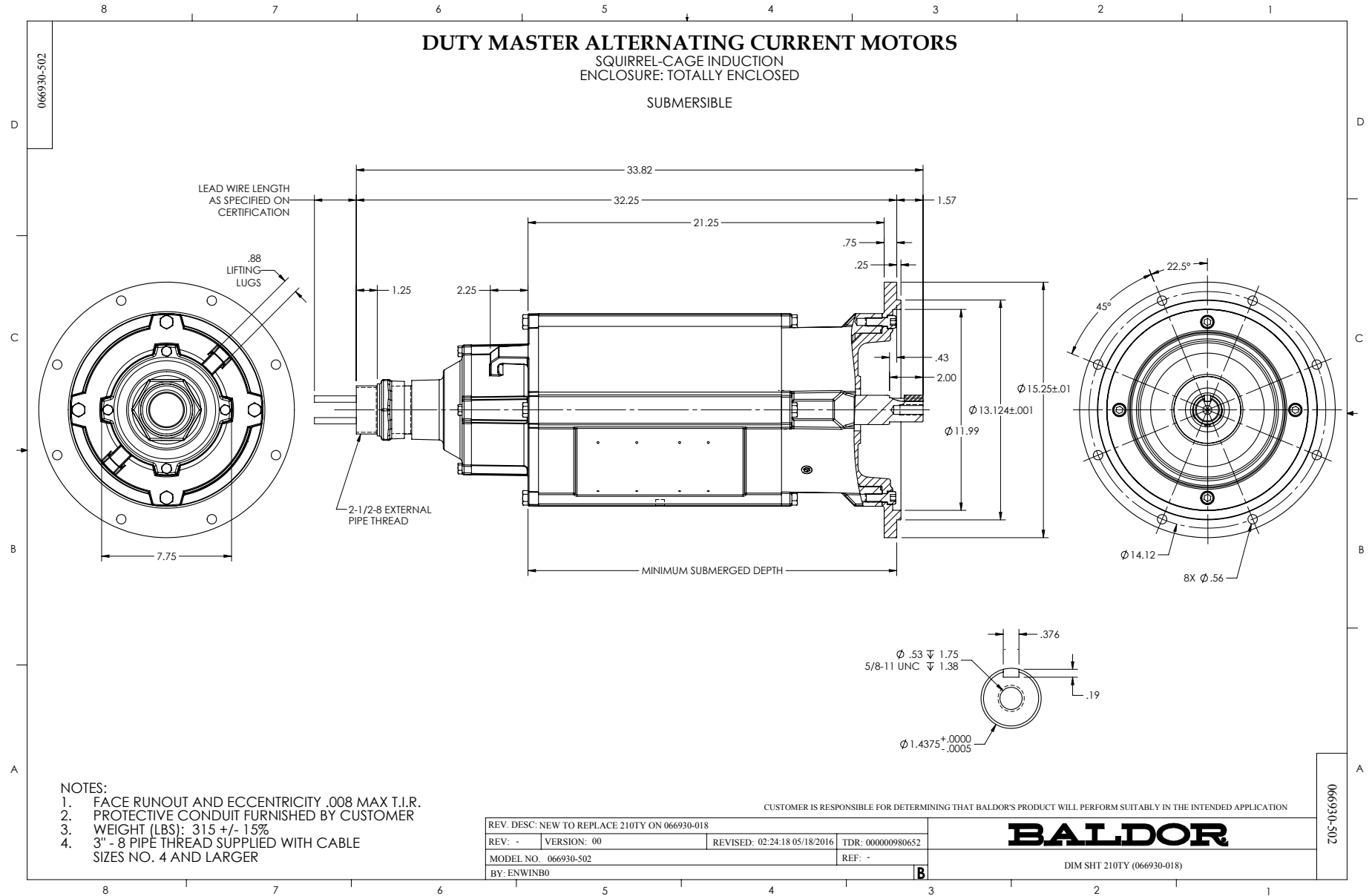
DR. BY D. M. BYRD
CR. BY T. S. WILLIAMS
APP. BY D. M. BYRD
DATE 01/28/05

A-C MOTOR
PERFORMANCE DATA
E02263-LAW017
ISSUE DATE 01/28/05

A MEMBER OF THE ABB GROUP

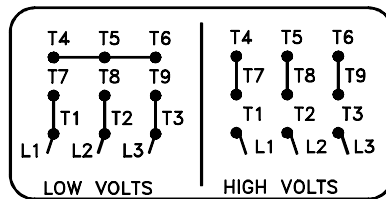
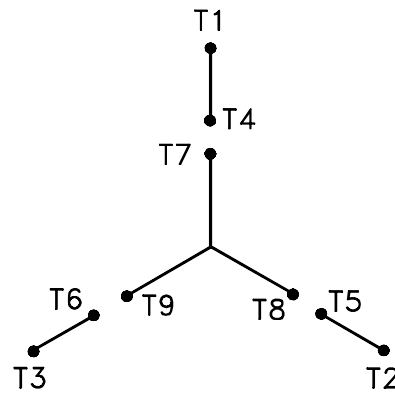


Printed on 4/2/15 9:36 @ r99



416820-001

A-C MOTOR
 CONNECTION DIAGRAM
 STANDARD 9 LEAD Y CONNECTED



(N.P. 1575-A)

416820-001

REV. DESC: LOADED TO BUS, C/R 335225		
REV. LTR: -	VERSION: 00	TDR: 000000538207
FILE: \MGA\00000\659	REVISED: 10:14:19 04/30/2010	
MTL: -	BY: RAGRA	

BALDOR

CONN DIAG - STANDARD 9 LEAD, Y CONNECTED

SH 1 of 1