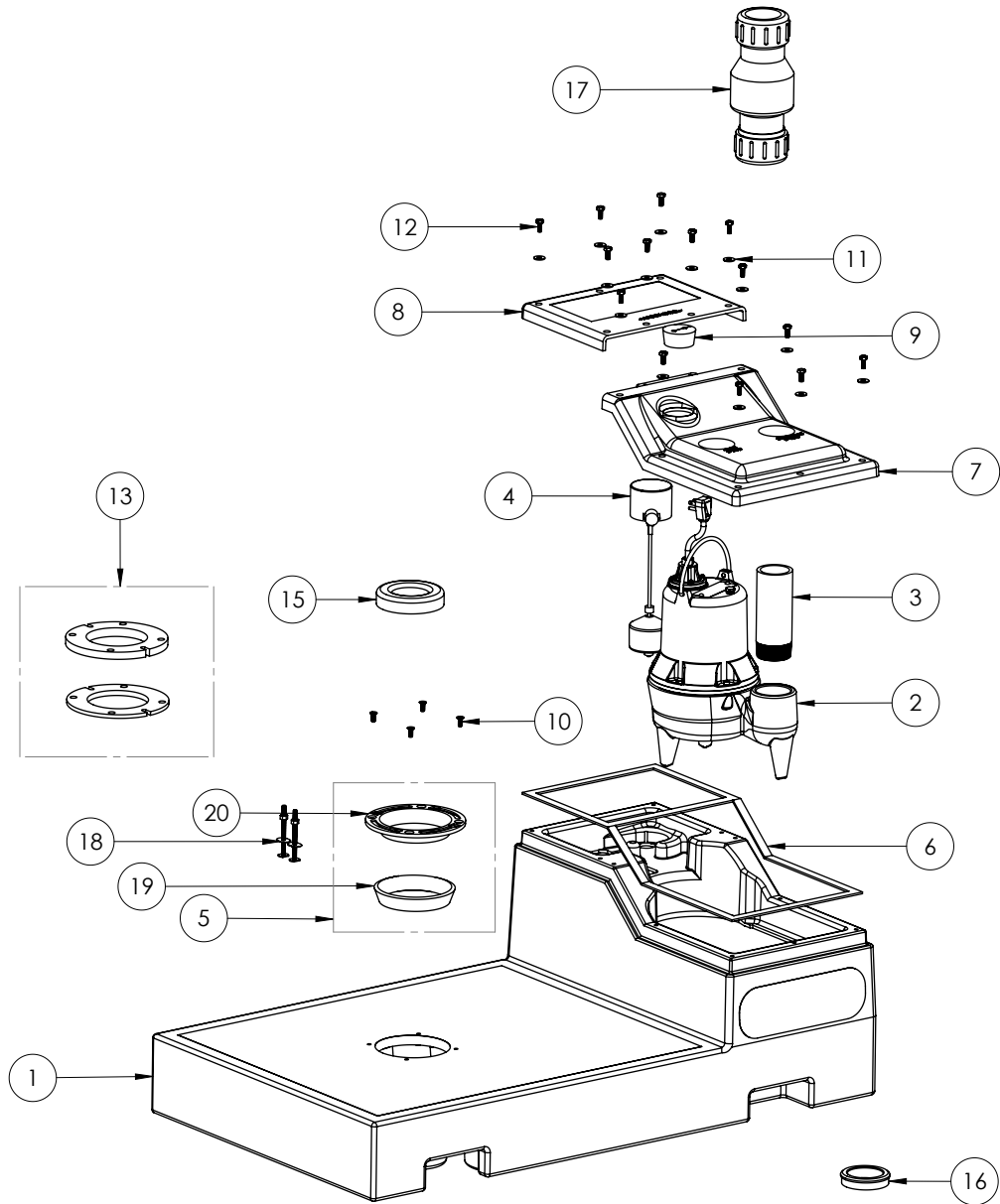


LOWPRO52LPK (B10)



LOWPRO52LPK**LOWPRO52LPK (B10)**

#	PART #	DESCRIPTION	QTY	Note
1	K001209	LOW PROFILE TANK	1	
2	LE52LPK	.5HP K SEWAGE PUMP	1	[1]
3	4623000	PVC TOE NIPPLE, 2 X 6" SCH 80	1	
4	K001251	VERTICLE MASTER SWITCH, 230V NO PLUG	1	
5	K001116	4624000 BRASS CLOSET FLANGE WITH GASKET TAPE & SCREWS (6)	1	
6	K001016	GASKET TAPE 1/8" THICK, 83" LONG	1	
7	K001208	THREADED COVER	1	
8	K001207	ACCESS COVER	1	
9	4022000	DOUBLE HOLE STOPPER - 9/32" HOLES	4	
10	8018000	1/4-20 x 5/8 SLOTTED FLAT HEAD BOLT	4	
11	8131000	1/4x3/4" STAINLESS STEEL FLAT WASHER	14	
12	8129000	1/4-20X5/8 HEX HEAD STAINLESS STEEL BOLT	14	
13	4626000	CLOSET FLANGE EXTENSION KIT 1/2" & 1/4" BOLTS	1	
15	4627000	WAX RING	1	
16	K001014	PIPE SEAL GROMMET 2"	1	
17	CV200C	2" COMPRESSION CHECK VALVE	1	
18	4625000	CLOSET BOLT KIT	1	
19	K001142	GASKET TAPE 1/8" THICK, 32" LONG	1	
20	4624000	BRASS CLOSET FLANGE	1	

PART NOTES:

[1] - Part requires factory authorized service. Contact Liberty Pumps at 1-800-543-2550