

# Commercial Grade Condensate Pumps

## Model A2 Series Pumps

## DATA SHEET



### BENEFITS:

- ◆ Solid cast aluminum reservoir
- ◆ Multiple piping arrangements
- ◆ Maintenance-free ball bearing motor design eliminates need for lubrication

Hartell's Model A2 series commercial grade condensate pumps define a new standard of quality and performance. These pumps offer unmatched service life by using oil- and chemical-resistant, high-temperature rated materials with robust design elements. Additionally, these pumps offer motor protection from splash, helping ensure maximum life. **Designed for optimal performance where cast aluminum construction is required.**

### FEATURES:

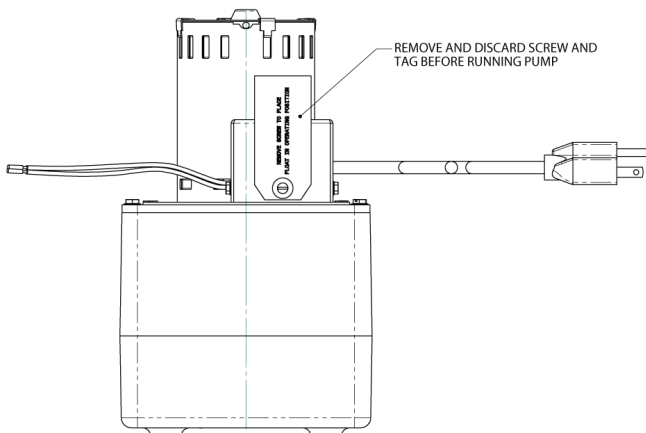
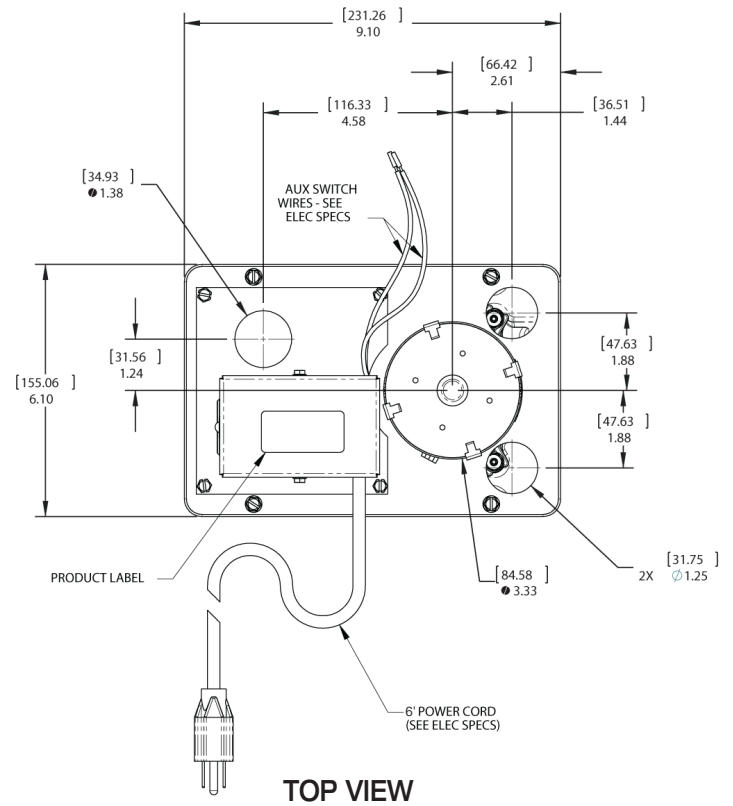
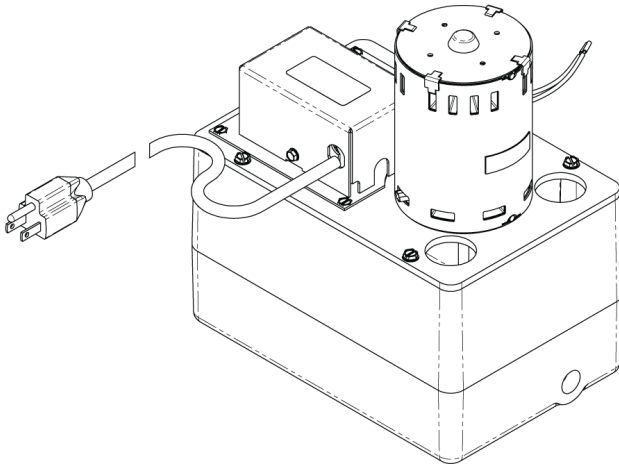
- ◆ 1 Gallon, heavy-duty, cast aluminum reservoir
- ◆ Unitized construction
- ◆ Usable lifts up to 20 ft
- ◆ Commercial application
- ◆ Snap-action switch
- ◆ 6-ft cord and plug
- ◆ Stainless-steel shaft
- ◆ Thermally protected motor
- ◆ Constructed of the highest quality workmanship and materials
- ◆ Inlets size options: two 1 $\frac{1}{4}$  in. or one 1 $\frac{3}{8}$  in.
- ◆ Expert design to maximize condensation collection and removal
- ◆ Extended maintenance free service
- ◆ 12 month warranty
- ◆ Max temperature 150°F
- ◆ Available auxiliary switch on "X" models

1  
YEAR  
WARRANTY

Model	Part No.	Voltage	Full Load Amps	Gallons/Liters		Feet/Meters				Max Lift	Dimensions			Weight
											Width	Length	Height	
A2-115	851011	115	3.1	Lift/Feet	4'	8'	12'	18'		20'	6"	9"	10"	14lb
				Gallons/hr	390	300	240	51						
A2-X115	851012	115	3.1	Lift/Meters	1.2m	2.4m	3.7m	5.5m		6m	15.24cm	22.86cm	254mm	6.35kg
				Liter/hr	1476.3	1135.6	908	193						
A2-230	851016	230	1.5	Lift/Feet	4'	8'	12'	18'		20'	6"	9"	10"	14lb
				Gallons/hr	390	300	240	51						
A2-X230	851017	230	1.5	Lift/Meters	1.2m	2.4m	3.7m	5.5m		6m	15.24cm	22.86cm	254mm	6.35kg
				Liter/hr	1476.3	1135.6	908	193						

# Commercial Grade Condensate Pumps

## Model A2 Series Pumps



END VIEW

