

BALDOR • RELIANCE

Customer information packet

VBM3538-D

.5/.37 KWHP, 1775RPM, 3PH, 60HZ, 56C, 3514M, T

Class - None

Division - Not Applicable

Copyright © All product information within this document is subject to ABB Motors and Mechanical Inc. copyright © protection, unless otherwise noted.

4/11/2025 7:45:04 AM

Specifications

Enclosure	TEFC
Frame	56C
Frame Material	Steel
Frequency	60.00 Hz
Haz Area Class and Group	None
Haz Area Division	Not Applicable
Motor Letter Type	Three Phase
Output @ Frequency	.500 HP @ 60 HZ
Phase	3
Synchronous Speed @ Frequency	1800 RPM @ 60 HZ
Voltage @ Frequency	208.0 V @ 60 HZ 230.0 V @ 60 HZ 460.0 V @ 60 HZ
Agency Approvals	C UR US CE CURUS UKCA WEEE
Ambient Temperature	40 °C
Auxillary Box	No Auxillary Box
Auxillary Box Lead Termination	None
Base Indicator	No Mounting
Bearing Grease Type	Polyrex EM (-20F +300F)
Blower	None
Current @ Voltage	2.020 A @ 230.0 V 1.900 A @ 208.0 V 1.010 A @ 460.0 V
Design Code	B
Drip Cover	No Drip Cover
Duty Rating	CONT
Efficiency @ 100% Load	81.5 %
Electrically Isolated Bearing	Not Electrically Isolated

Part detail

Revision	A
Type	AC
Mech. spec.	35X145
Base	
Status	PRD/A
Elec. spec.	35WGG069
Layout	35LYX145
Eff. date	09-11-2024
CD Diagram	CD0005
Poles	04
Leads	9#18
Proprietary	False
Created date	09-15-2023

Feedback Device	NO FEEDBACK
Front Shaft Indicator	None
Heater Indicator	No Heater
High Voltage Full Load Amps	1.0 a
Insulation Class	F
Inverter Code	Not Inverter
KVA Code	N
Lifting Lugs	No Lifting Lugs
Locked Bearing Indicator	Locked Bearing
Motor Lead Quantity/Wire Size	9 @ 18 AWG
Motor Lead Termination	Flying Leads
Motor Standards	NEMA
Motor Type	3514M
Mounting Arrangement	F3
Number of Poles	4
Overall Length	16.25 IN
Power Factor	63
Product Family	General Purpose
Pulley End Bearing Type	Sealed Bearing
Pulley Face Code	C-Face
Pulley Shaft Indicator	Standard
Rodent Screen	None
Service Factor	1.15
Shaft Diameter	0.625 IN
Shaft Ground Indicator	No Shaft Grounding
Shaft Rotation	Reversible
Shaft Slinger Indicator	No Slinger
Speed	1775 rpm
Speed Code	Single Speed
Starting Method	Direct on line
Thermal Device - Bearing	None
Thermal Device - Winding	None
Vibration Sensor Indicator	No Vibration Sensor
Winding Thermal 1	None

Winding Thermal 2

None

Nameplate

NP1372L									
CAT.NO.	VBM3538-D								
SPEC.	35X145G069G4								
HP	.5/.37 KW								
VOLTS	208-230/460								
AMP	1.9-2.02/1.01								
R.P.M. (1/MIN)	1775								
FRAME	56C		HZ	60		PH	3		
SER.F.	1.15	CODE	N	DES	B	CL	F		
NEMA-NOM-EFF	81.5	PF	63						
RATING	40C AMB-S1 CONT								
CC		IP44 IC411 20KG							
DE	6205	ODE	6205						
ENCL	TEFC	SN							
	IE2-79.0(75%)74.0(50%)								

AC Induction Motor Performance Data

Record # 101693

Typical performance - not guaranteed values

Winding: 35WGG069-R085		Type: 3514M	Enclosure: TEFC	
Nameplate Data			460 V, 60 Hz: High Voltage Connection	
Rated Output (HP)	.5	Full Load Torque	1.48 LB-FT	
Volts	208-230/460	Start Configuration	direct on line	
Full Load Amps	1.9-2.02/1.01	Breakdown Torque	8 LB-FT	
R.P.M.	1775	Pull-up Torque	4.4 LB-FT	
Hz	60 Phase	Locked-rotor Torque	5.1 LB-FT	
NEMA Design Code	B KVA Code	Starting Current	8.4 A	
Service Factor (S.F.)	1.15	No-load Current	0.85 A	
NEMA Nom. Eff.	81.5 Power Factor	Line-line Res. @ 25°C	30.3 Ω	
Rating - Duty	40C AMB-CONT	Temp. Rise @ Rated Load	23°C	
S.F. Amps		Temp. Rise @ S.F. Load	25°C	
		Locked-rotor Power Factor	66.8	
		Rotor inertia	0.101 lb-ft ²	

Load Characteristics 460 V, 60 Hz, 0.5 HP

% of Rated Load	25	50	75	100	125	150	S.F.
Power Factor	24	37	48	58	65	71	62
Efficiency	58.9	72.5	78.4	80.5	81.6	81.5	81.2
Speed	1793	1788	1782	1776	1771	1763	1773
Line amperes	0.85	0.89	0.94	1.01	1.11	1.21	1.07

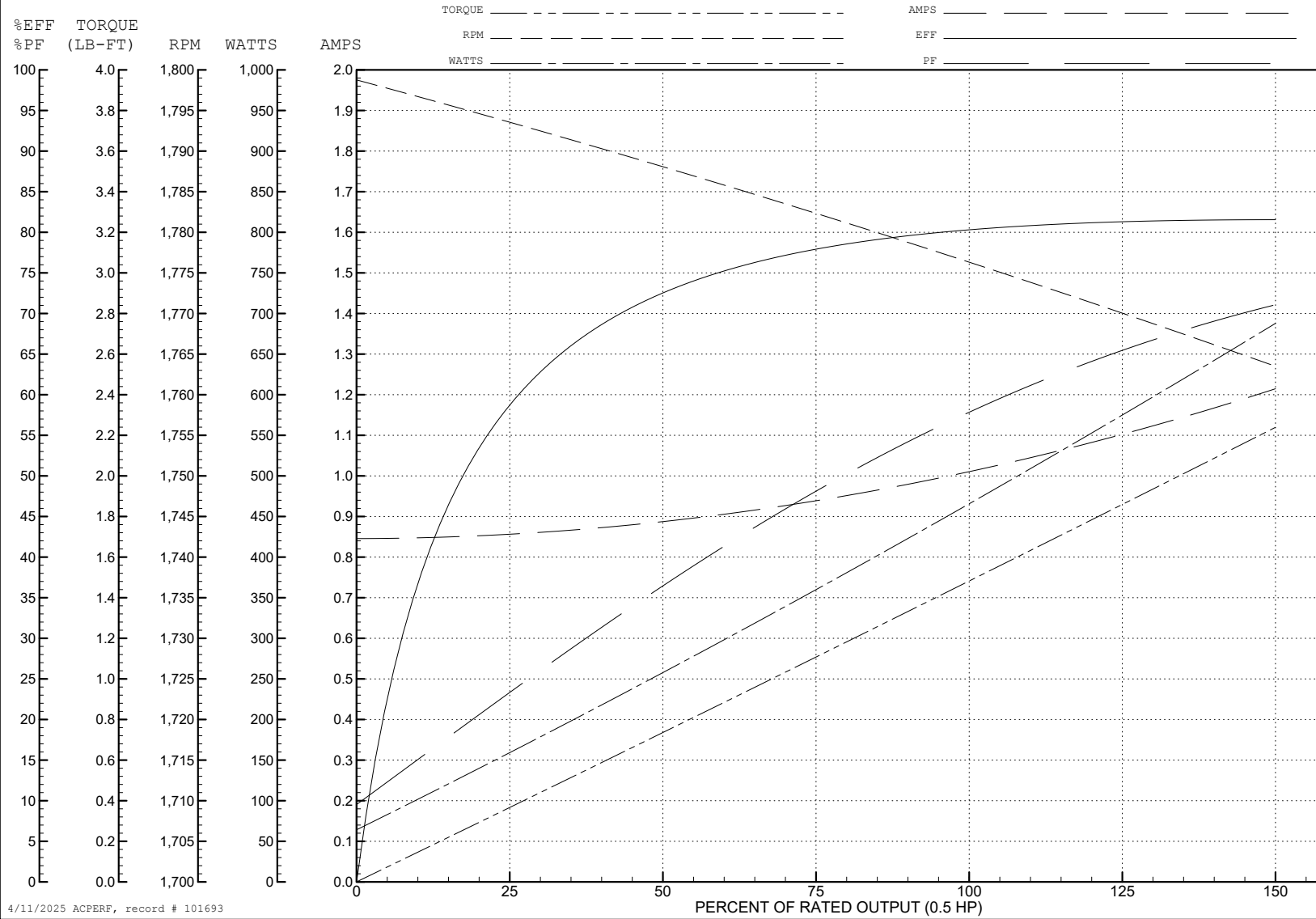
ABB Motors and Mechanical Inc.

WINDING # 35WGG069

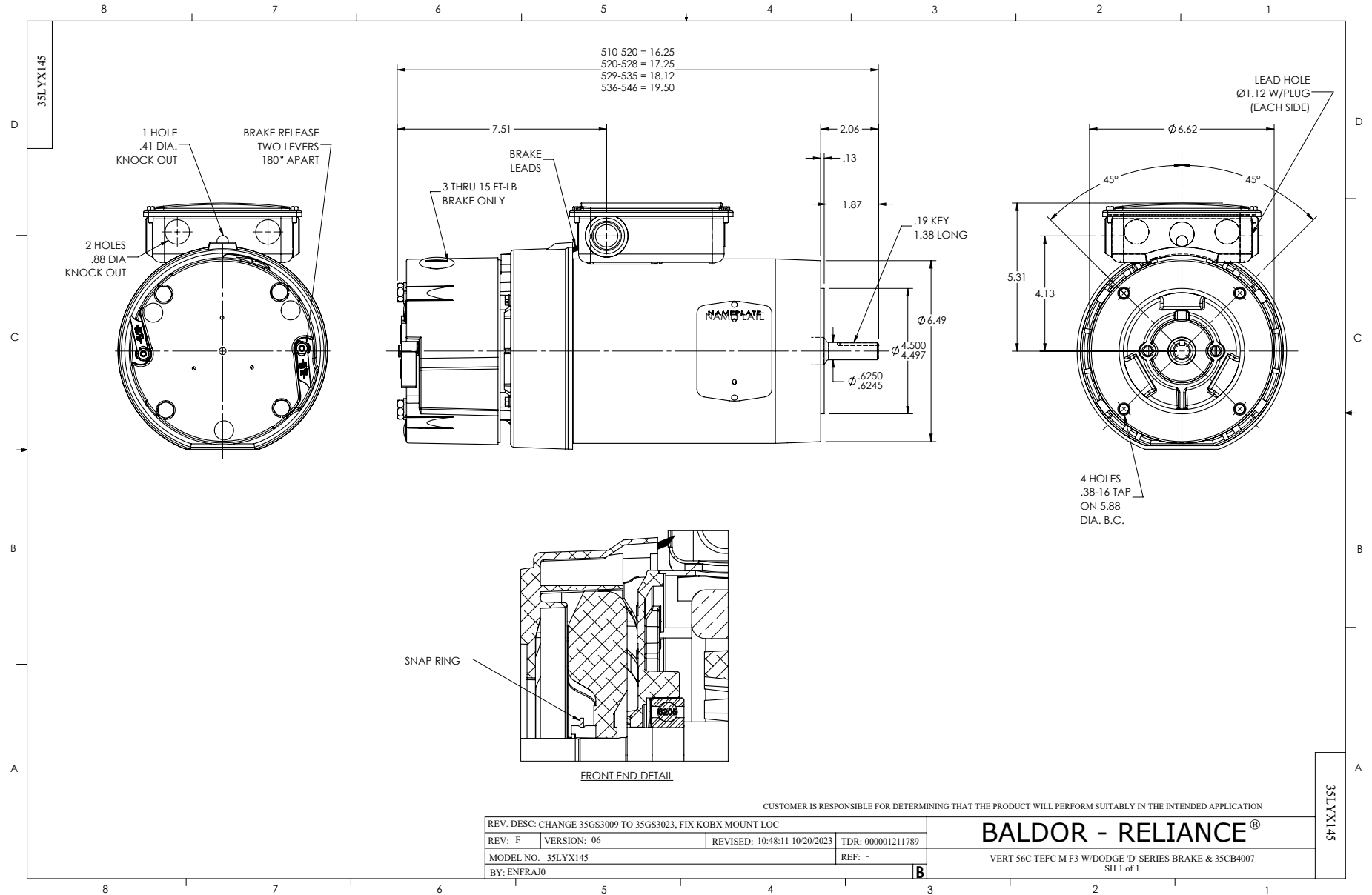
0.5 HP 3 PH 60 HZ 1775 RPM 460 V 3514M

Typical performance - not guaranteed values.

TORQUES (LB-FT): PO=8 PU=4.4 LR=5.1 LRA=8.4



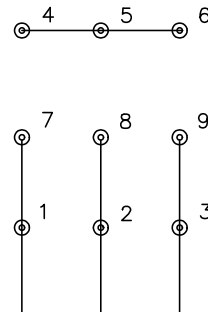
4/11/2025 ACPERF, record # 101693



CD0005

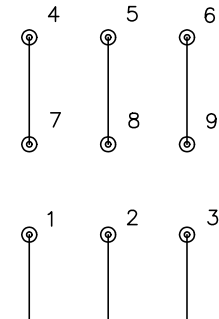


LOW VOLTAGE
(2Y)



LINE

HIGH VOLTAGE
(1Y)



LINE

NOTES:

1. INTERCHANGE ANY TWO LINE LEADS TO REVERSE ROTATION.
2. OPTIONAL THERMOSTATS ARE PROVIDED WHEN SPECIFIED.
3. ACTUAL NUMBER OF INTERNAL PARALLEL CIRCUITS MAY BE A MULTIPLE OF THOSE SHOWN ABOVE.
4. LEAD COLORS ARE OPTIONAL. LEADS MUST ALWAYS BE NUMBERED AS SHOWN.

CD0005

REV. DESC: REVISE TO SHOW OPTIONAL COLORS			
REV. LTR: E	BY: JLP	REVISED: 01/19/99 10:15	TDR: 0171435
S00000		FILE: AAA00005140	MDL: -
		MTL: -	

BALDOR ELECTRIC Co.

3PH, DV, 9 LEADS

CD2120

WIRING CONNECTIONS (1 PHASE VAC)

	POWER LINE A	POWER LINE B	CAP TOGETHER	CAP ALONE
AC LOW VOLT.	B1	B2	B3 & B5	B4
AC HIGH VOLT.	B1 & B5	B2	---	B3 CAP ALONE B4 CAP ALONE
DC VOLT.	B1	B2	B3 & B5	B4

B1 WHITE
B2 BLACK
B3 GRAY
B4 BLUE
B5 RED

CD2120

REV. DESC: NEW		TDR: 000000741785	
REV. LTR: -	VERSION: 00	REVISD: 12: 28:11 04/12/2012	
FILE: \CKA\00037\282		BY: CKRONSO	
MTL: -			

BALDOR • DODGE • RELIANCE

D-SERIES MOTOR BRAKE 5LD AC\DC
SH 1 of 1