

BALDOR® • RELIANCE 

Product Information Packet

VEL11306

.75HP,3450RPM,1PH,60HZ,56C,3428LC,OPEN,F

| Part Detail | | | | | | | |
|-------------|--------|-------------|------------|-------------|--------|---------------|------------|
| Revision: | F | Status: | PRD/A | Change #: | | Proprietary: | No |
| Type: | AC | Elec. Spec: | 34WGS943 | CD Diagram: | CD0055 | Mfg Plant: | |
| Mech. Spec: | 34M524 | Layout: | 34LYM524 | Poles: | 02 | Created Date: | 09-25-2014 |
| Base: | N | Eff. Date: | 08-27-2018 | Leads: | 6#18 | | |

| Specs | | | |
|---------------------------------|-------------------------|--------------------------------|-----------------|
| Catalog Number: | VEL11306 | Insulation Class: | B |
| Enclosure: | OPEN | Inverter Code: | Not Inverter |
| Frame: | 56C | KVA Code: | J |
| Frame Material: | Steel | Lifting Lugs: | No Lifting Lugs |
| Output @ Frequency: | .750 HP @ 60 HZ | Locked Bearing Indicator: | Locked Bearing |
| Synchronous Speed @ Frequency: | 3600 RPM @ 60 HZ | Motor Lead Quantity/Wire Size: | 6 @ 18 AWG |
| Voltage @ Frequency: | 230.0 V @ 60 HZ | Motor Lead Exit: | Ko Box |
| | 115.0 V @ 60 HZ | Motor Lead Termination: | Flying Leads |
| XP Class and Group: | None | Motor Type: | 3428LC |
| XP Division: | Not Applicable | Mounting Arrangement: | F1 |
| Agency Approvals: | CSA | Power Factor: | 95 |
| | UR | Product Family: | General Purpose |
| Auxillary Box: | No Auxillary Box | Pulley End Bearing Type: | Ball |
| Auxillary Box Lead Termination: | None | Pulley Face Code: | C-Face |
| Base Indicator: | No Mounting | Pulley Shaft Indicator: | Standard |
| Bearing Grease Type: | Polyrex EM (-20F +300F) | Rodent Screen: | None |
| Blower: | None | RoHS Status: | ROHS COMPLIANT |
| Current @ Voltage: | 3.300 A @ 230.0 V | Shaft Extension Location: | Pulley End |

| | | | |
|---------------------------------------|---------------------------|------------------------------------|---------------------|
| | 4.700 A @ 208.0 V | Shaft Ground Indicator: | No Shaft Grounding |
| | 6.300 A @ 115.0 V | Shaft Rotation: | Reversible |
| Design Code: | N | Shaft Slinger Indicator: | No Slinger |
| Drip Cover: | Drip Cover | Speed Code: | Single Speed |
| Duty Rating: | CONT | Motor Standards: | NEMA |
| Electrically Isolated Bearing: | Not Electrically Isolated | Starting Method: | Direct on line |
| Feedback Device: | NO FEEDBACK | Thermal Device - Bearing: | NONE (OLD) |
| Front Face Code: | Standard | Thermal Device - Winding: | None |
| Front Shaft Indicator: | None | Vibration Sensor Indicator: | No Vibration Sensor |
| Heater Indicator: | No Heater | Winding Thermal 1: | None |
| | | Winding Thermal 2: | None |

| Nameplate NP3155L | | | | | | | | | | |
|-------------------|--------------|--|------|----|-----|------|--|----------------|-----|---|
| CAT.NO. | VEL11306 | | | | | | | | | |
| SPEC. | 34M524S943G1 | | | | | | | | | |
| HP | .75 | | | | | | | | | |
| VOLTS | 115/230 | | | | | | | | | |
| AMP | 6.3/3.3 | | | | | | | | | |
| RPM | 3450 | | | | | | | | | |
| FRAME | 56C | | | | HZ | 60 | | | PH | 1 |
| SER.F. | 1.25 | | CODE | J | DES | N | | CL | B | |
| F.L. AVG. EFF. | 76.2 | | PF | 95 | | | | | | |
| RATING | 40C AMB-CONT | | | | | | | | | |
| CC | | | | | | | | USABLE AT 208V | 4.7 | |
| DE | 6203 | | | | ODE | 6203 | | | | |
| ENCL | OPEN | | SN | | | | | | | |
| | SFA 8.4/4.2 | | | | | | | | | |

| Parts List | | |
|---------------|--|----------|
| Part Number | Description | Quantity |
| SA287540 | SA 34M524S943G1 | 1.000 EA |
| RA273750 | RA 34M524S943G1 | 1.000 EA |
| OC3030F11SP | CAPACITOR 30 MFD 370 VAC | 1.000 EA |
| EC1400A03SP | ELEC CAP, 400-480 MFD, 125V, 1.81D X 3. | 1.000 EA |
| NS2512A01 | INSULATOR, CONDUIT BOX X | 1.000 EA |
| 34CB3002A | CB CAST W/.88 DIA HOLE | 1.000 EA |
| 51XB1016A07 | 10-16 X 7/16 HXWSSLD SERTYB | 2.000 EA |
| 11XW1032G06 | 10-32 X .38, TAPTITE II, HEX WSHR SLTD U | 1.000 EA |
| 51XW0832A07 | 8-32 X .44, TAPTITE II, HEX WSHR SLTD SE | 2.000 EA |
| 34EP3200A03SP | FR ENDPLATE, MACH | 1.000 EA |
| NS2501A02 | INSULATOR, CAPACITOR BOX | 1.000 EA |
| 34CB3801 | CAPACITOR BOX, DIE CAST | 1.000 EA |
| 51XB1214A08 | 12-14 X 1/2HX WS SL SR TYBX | 2.000 EA |
| HW5100A03 | WAVY WASHER (W1543-017) | 1.000 EA |
| 34EP3400A05 | PU ENDPLATE, MACH | 1.000 EA |
| 34AD2000 | BAFFLE PLATE, STAMPED | 1.000 EA |
| 60XW0632A06 | 6-32 X 3/8 TORX HEAD SCREW TAPTITE II | 4.000 EA |
| 51XN1032A20 | 10-32 X 1 1/4 HX WS SL SR | 2.000 EA |
| 34FH4000A11 | DRIP COVER, STAMPED,PRIMER | 1.000 EA |
| 51XW1032A06 | 10-32 X .38, TAPTITE II, HEX WSHR SLTD S | 3.000 EA |
| 34CB4517 | CB LID 4 MTG HOLES .22 DIA STAMPED, FOR | 1.000 EA |
| 51XW0832A07 | 8-32 X .44, TAPTITE II, HEX WSHR SLTD SE | 4.000 EA |
| HW2501D13 | KEY, 3/16 SQ X 1.375 | 1.000 EA |
| HA7000A04 | KEY RETAINER 0.625 DIA SHAFTS | 1.000 EA |

| Parts List (continued) | | |
|-------------------------------|--|-----------------|
| Part Number | Description | Quantity |
| MG1000Y03 | MUNSELL 2.53Y 6.70/ 4.60, GLOSS 20, | 0.014 GA |
| 85XU0407S04 | 4X1/4 U DRIVE PIN STAINLESS | 2.000 EA |
| SP5051A03 | MODEL 35 TORQ STATIONARY SWITCH LEAD ASS | 1.000 EA |
| HA3100A22 | THRUBOLT 10-32 X 10.125 | 4.000 EA |
| MN416A01 | TAG-INSTAL-MAINT no wire (1200/bx) 5/18 | 1.000 EA |
| LC0001A01 | CONN LABEL / WARNING LABEL (LC0001 / LB1 | 1.000 EA |
| NP3155L | ALUM SUPER-E UL CSA CC "SEMS" | 1.000 EA |
| 27PA1001 | PKG GRP, PRINT PK1027A06 | 1.000 EA |
| PK3083T | STYROFOAM PACKING CRADLE | 1.000 EA |
| PK3088 | MICROFOAM, 8"X"8 PERF. SHEETS 5,400/RL | 1.000 EA |

AC Induction Motor Performance Data

Record # 47427 - Typical performance - not guaranteed values

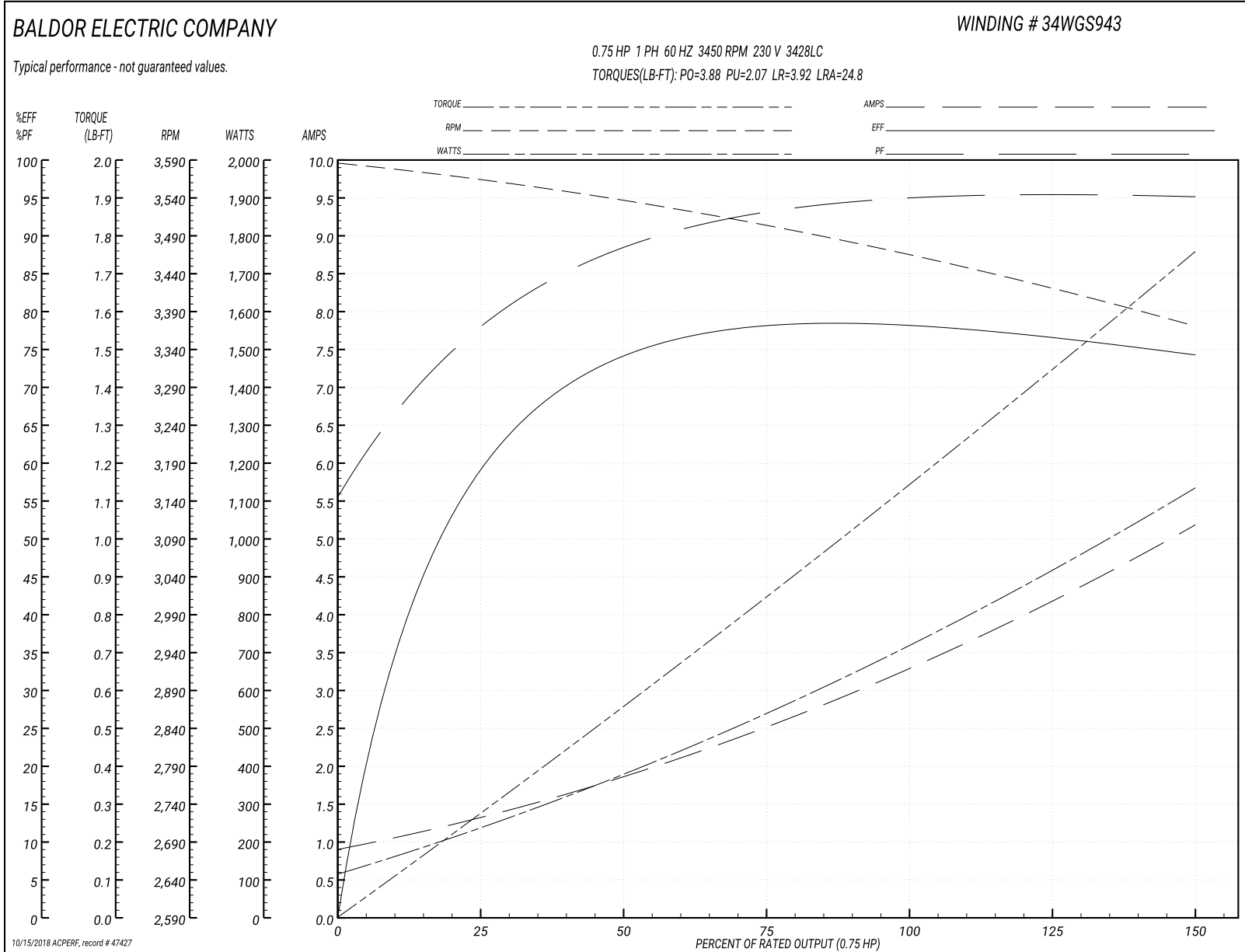
| | | |
|-------------------------------|---------------------|------------------------|
| Winding: 34WGS943-R002 | Type: 3428LC | Enclosure: OPEN |
|-------------------------------|---------------------|------------------------|

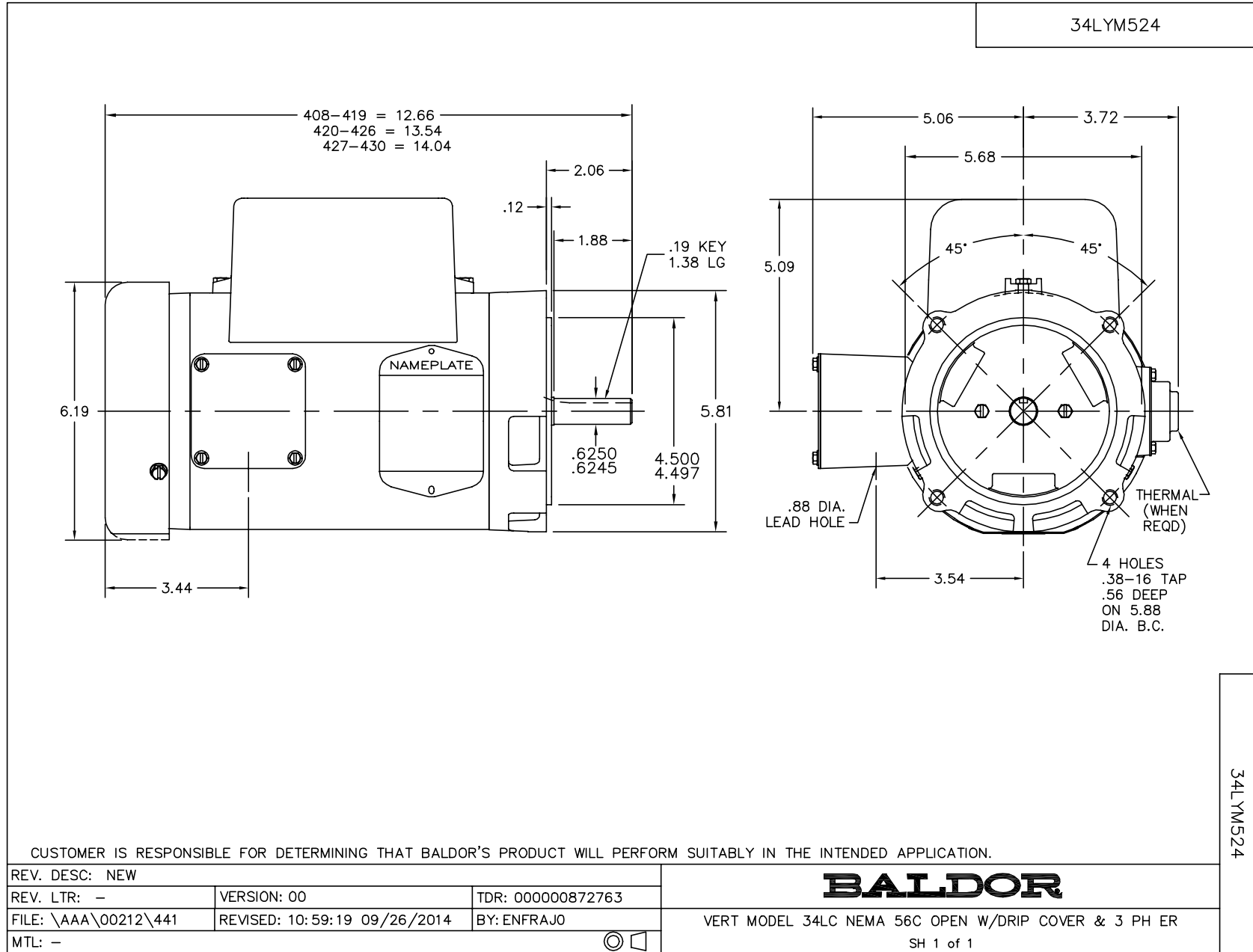
| Nameplate Data | | | | 230 V, 60 Hz: High Voltage Connection | |
|-----------------------|--------------|--------------|----|--|-------------------------------|
| Rated Output (HP) | .75 | | | Full Load Torque | 1.14 LB-FT |
| Volts | 115/230 | | | Start Configuration | direct on line |
| Full Load Amps | 6.3/3.3 | | | Breakdown Torque | 3.88 LB-FT |
| R.P.M. | 3450 | | | Pull-up Torque | 2.07 LB-FT |
| Hz | 60 | Phase | 1 | Locked-rotor Torque | 3.92 LB-FT |
| NEMA Design Code | N | KVA Code | J | Starting Current | 24.8 A |
| Service Factor (S.F.) | 1.25 | | | No-load Current | 0.961 A |
| NEMA Nom. Eff. | 76.2 | Power Factor | 95 | Line-line Res. @ 25°C | 2.4012 Ω A Ph 2.118 Ω B Ph |
| Rating - Duty | 40C AMB-CONT | | | Temp. Rise @ Rated Load | 12°C |
| S.F. Amps | 8.4/4.2 | | | Temp. Rise @ S.F. Load | 16°C |

Load Characteristics 230 V, 60 Hz, 0.75 HP

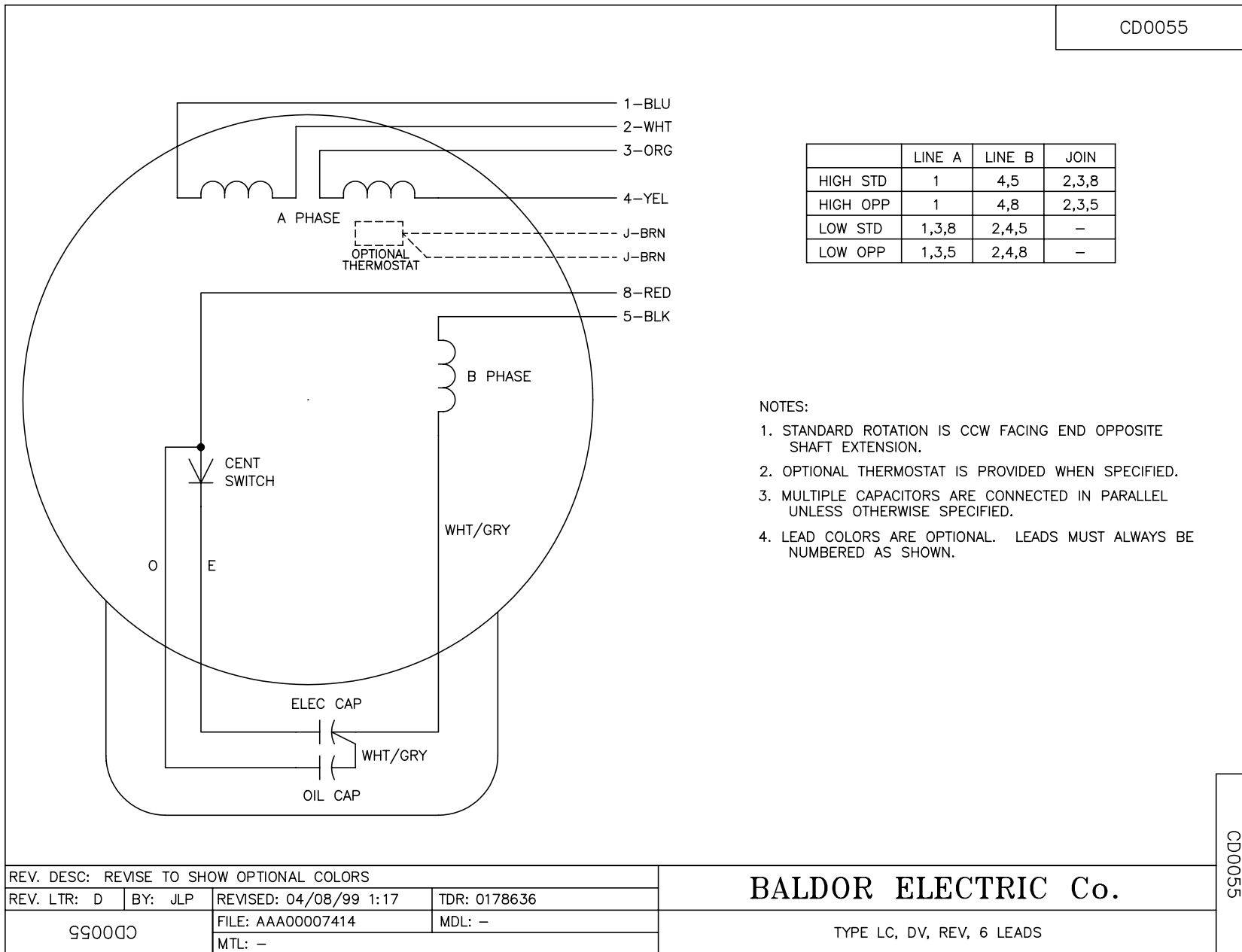
| % of Rated Load | 25 | 50 | 75 | 100 | 125 | 150 | S.F. |
|-----------------|--------|--------|--------|------|--------|--------|------|
| Power Factor | 77 | 89 | 93 | 95 | 95 | 95 | 95 |
| Efficiency | 62.6 | 74.2 | 78.2 | 77.5 | 76.1 | 74.7 | 76.1 |
| Speed | 3567.6 | 3537.1 | 3504.2 | 3465 | 3419.8 | 3372.1 | 3420 |
| Line amperes | 1.23 | 1.84 | 2.51 | 3.32 | 4.21 | 5.14 | 4.21 |

Performance Graph at 230V, 60Hz, 0.75HP Typical performance - Not guaranteed values





CD0055



| | LINE A | LINE B | JOIN |
|----------|--------|--------|-------|
| HIGH STD | 1 | 4,5 | 2,3,8 |
| HIGH OPP | 1 | 4,8 | 2,3,5 |
| LOW STD | 1,3,8 | 2,4,5 | - |
| LOW OPP | 1,3,5 | 2,4,8 | - |

NOTES:

1. STANDARD ROTATION IS CCW FACING END OPPOSITE SHAFT EXTENSION.
2. OPTIONAL THERMOSTAT IS PROVIDED WHEN SPECIFIED.
3. MULTIPLE CAPACITORS ARE CONNECTED IN PARALLEL UNLESS OTHERWISE SPECIFIED.
4. LEAD COLORS ARE OPTIONAL. LEADS MUST ALWAYS BE NUMBERED AS SHOWN.

| | | | |
|---|---------|------------------------|--------------|
| REV. DESC: REVISE TO SHOW OPTIONAL COLORS | | | |
| REV. LTR: D | BY: JLP | REVISED: 04/08/99 1:17 | TDR: 0178636 |
| 990055 | | FILE: AAA00007414 | MDL: - |
| | | MTL: - | |

BALDOR ELECTRIC Co.

TYPE LC, DV, REV, 6 LEADS

CD0055