



Customer information packet

VEM2394T

15HP, 3500RPM, 3PH, 60HZ, 254TC, 0750M, TEFC, F

Class - None

Division - Not Applicable

Specifications

Enclosure	TEFC
Frame	254TC
Frame Material	Iron
Frequency	60.00 Hz
Haz Area Class and Group	None
Haz Area Division	Not Applicable
Motor Letter Type	Three Phase
Output @ Frequency	15.000 HP @ 60 HZ
Phase	3
Synchronous Speed @ Frequency	3600 RPM @ 60 HZ
Voltage @ Frequency	230.0 V @ 60 HZ 460.0 V @ 60 HZ
Agency Approvals	NEMA PREMIUM CURUSEEV
Ambient Temperature	40 °C
Auxillary Box	No Auxillary Box
Auxillary Box Lead Termination	None
Base Indicator	No Mounting
Bearing Grease Type	Polyrex EM (-20F +300F)
Blower	None
Current @ Voltage	16.900 A @ 460.0 V 33.800 A @ 230.0 V 36.000 A @ 208.0 V
Design Code	A
Drip Cover	No Drip Cover
Duty Rating	CONT
Efficiency @ 100% Load	91.0 %
Electrically Isolated Bearing	Not Electrically Isolated
Feedback Device	NO FEEDBACK
Front Face Code	Standard
Front Shaft Indicator	None
Heater Indicator	No Heater

Part detail

Revision	G
Type	AC
Mech. spec.	07H299
Base	
Status	PRD/A
Elec. spec.	07WGR536
Layout	07LYH299
Eff. date	05-02-2024
CD Diagram	CD0005
Poles	02
Leads	9#14
Proprietary	False
Created date	02-04-2016

High Voltage Full Load Amps	16.9 a
Insulation Class	F
Inverter Code	Inverter Ready
KVA Code	H
Lifting Lugs	Standard Lifting Lugs
Locked Bearing Indicator	Locked Bearing
Motor Lead Exit	Ko Box
Motor Lead Quantity/Wire Size	9 @ 14 AWG
Motor Lead Termination	Flying Leads
Motor Standards	NEMA
Motor Type	0750M
Mounting Arrangement	F1
Number of Poles	2
Overall Length	20.32 IN
Power Factor	91
Product Family	General Purpose
Pulley End Bearing Type	Ball
Pulley Face Code	C-Face
Pulley Shaft Indicator	Standard
Rodent Screen	None
RoHS Status	ROHS COMPLIANT
Service Factor	1.15
Shaft Diameter	1.625 IN
Shaft Extension Location	Pulley End
Shaft Ground Indicator	No Shaft Grounding
Shaft Rotation	Reversible
Shaft Slinger Indicator	No Slinger
Speed	3500 rpm
Speed Code	Single Speed
Starting Method	Direct on line
Thermal Device - Bearing	None
Thermal Device - Winding	None
Vibration Sensor Indicator	No Vibration Sensor
Winding Thermal 1	None

Winding Thermal 2

None

Nameplate

NP1259L									
CAT.NO.	VEM2394T								
SPEC.	07H299R536G1								
HP	15								
VOLTS	230/460								
AMP	33.8/16.9								
RPM	3500								
FRAME	254TC		HZ	60		PH	3		
SER.F.	1.15	CODE	H	DES	A	CL	F		
NEMA-NOM-EFF	91	PF	91						
RATING	40C AMB-CONT								
CC	010A								
DE	6309		ODE	6307					
ENCL	TEFC	SN							

AC Induction Motor Performance Data

Record # 57257

Typical performance - not guaranteed values

Winding: 07WGR536-R002		Type: 0750M		Enclosure: TEFC	
Nameplate Data			460 V, 60 Hz: High Voltage Connection		
Rated Output (HP)	15	Full Load Torque	22.6 LB-FT		
Volts	230/460	Start Configuration	direct on line		
Full Load Amps	33.8/16.9	Breakdown Torque	87.7 LB-FT		
R.P.M.	3500	Pull-up Torque	29.6 LB-FT		
Hz	60 Phase	3	Locked-rotor Torque	43.2 LB-FT	
NEMA Design Code	A KVA Code	H	Starting Current	133 A	
Service Factor (S.F.)	1.15	No-load Current	4.61 A		
NEMA Nom. Eff.	91 Power Factor	91	Line-line Res. @ 25°C	0.54448 Ω	
Rating - Duty	40C AMB-CONT	Temp. Rise @ Rated Load	66°C		
S.F. Amps		Temp. Rise @ S.F. Load	84°C		
		Locked-rotor Power Factor	30		

Load Characteristics 460 V, 60 Hz, 15 HP

% of Rated Load	25	50	75	100	125	150	S.F.
Power Factor	65	83	88	91	92	91	92
Efficiency	90.2	92.6	92.5	91.6	90.2	88.6	90.8
Speed	3572	3546.2	3519.8	3490.6	3457.2	3421.4	3471
Line amperes	6.18	9.3	12.9	16.9	21.4	26	19.6

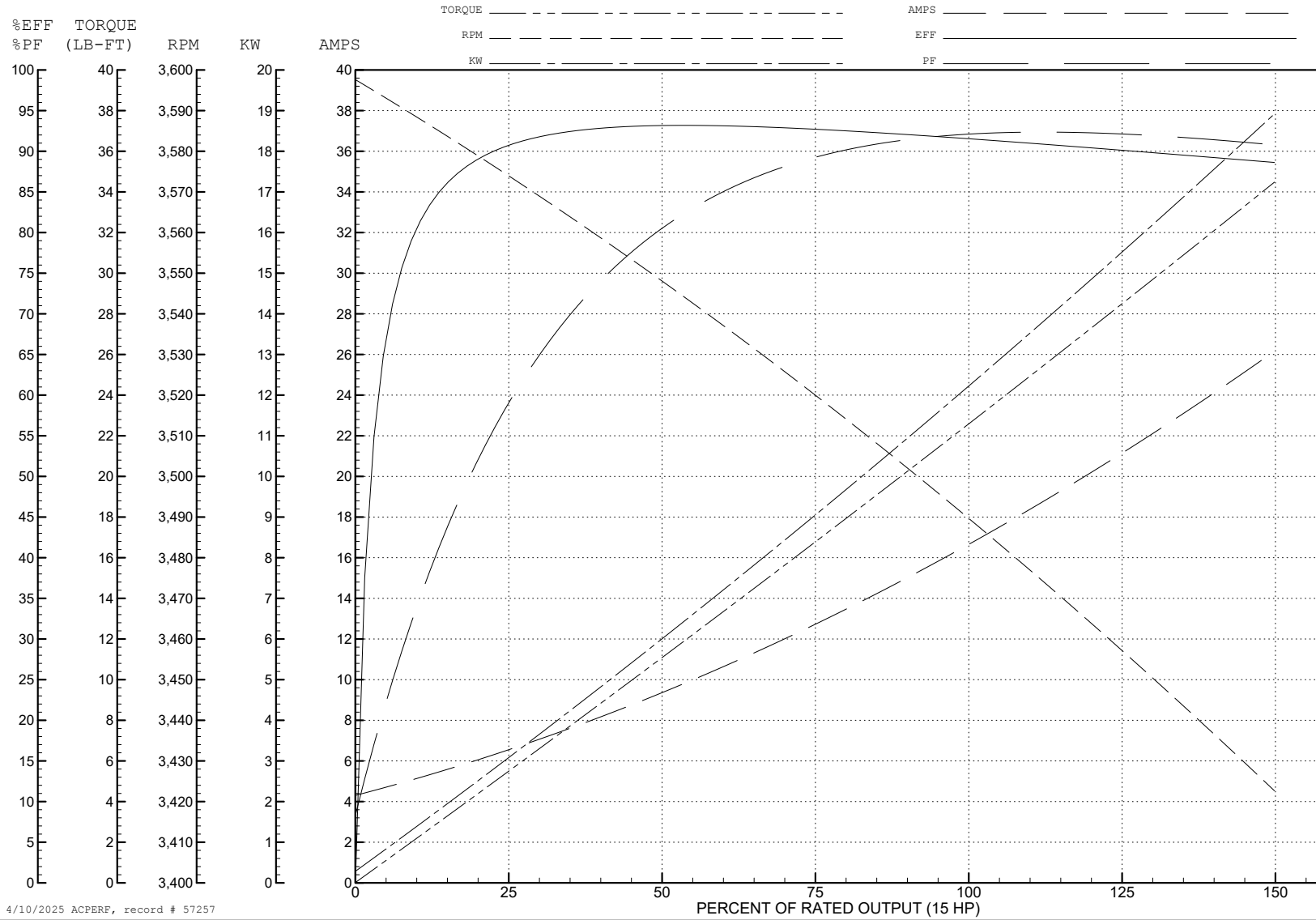
ABB Motors and Mechanical Inc.

WINDING # 07WGR536

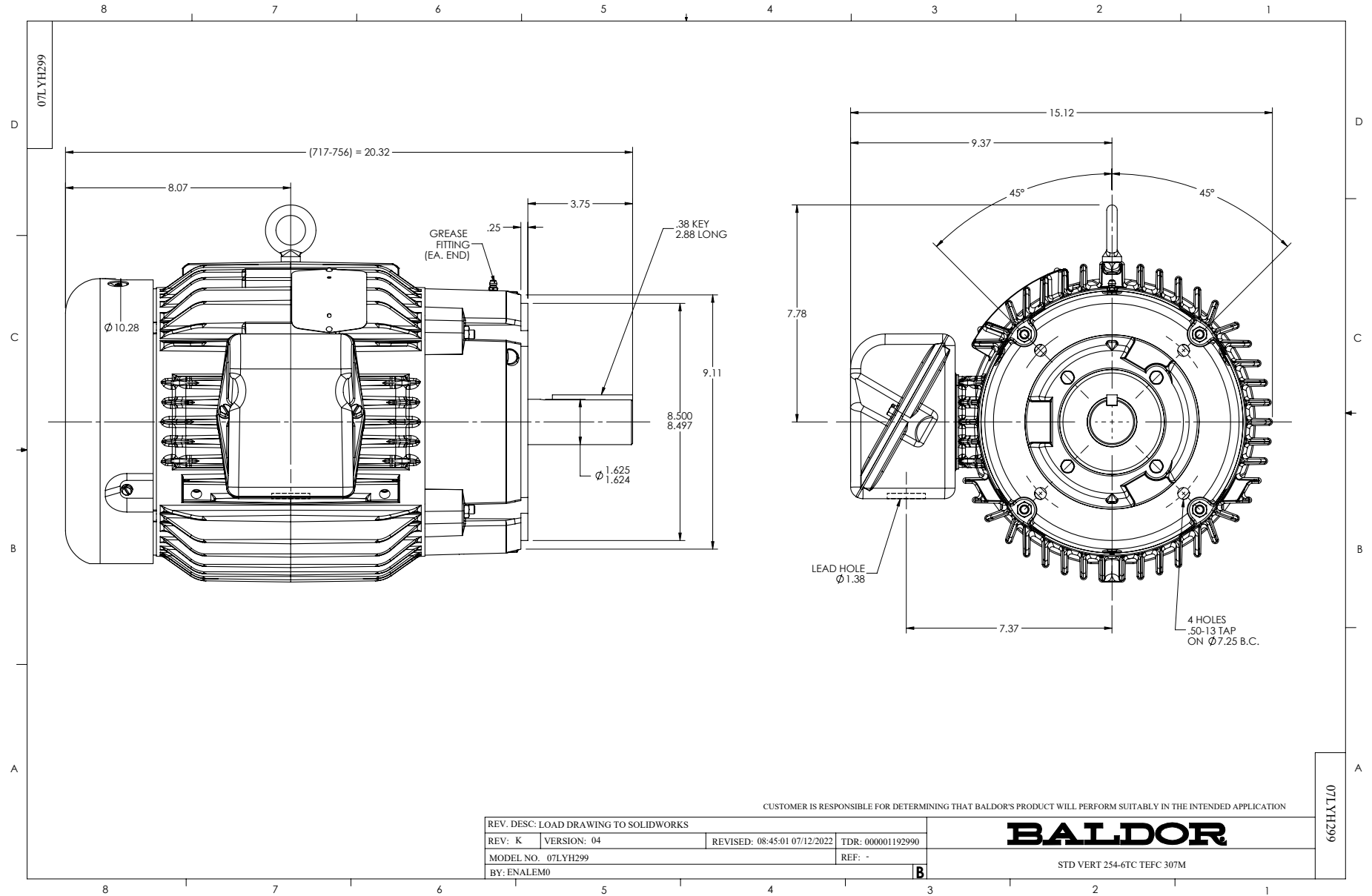
Typical performance - not guaranteed values.

15 HP 3 PH 60 HZ 3500 RPM 460 V 0750M

TORQUES (LB-FT): PO=87.7 PU=29.6 LR=43.2 LRA=133



4/10/2025 ACPERF, record # 57257



CD0005

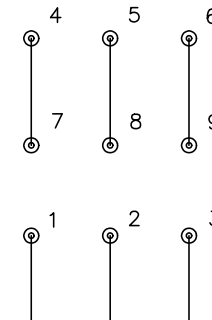


LOW VOLTAGE
(2Y)



LINE

HIGH VOLTAGE
(1Y)



LINE

NOTES:

1. INTERCHANGE ANY TWO LINE LEADS TO REVERSE ROTATION.
2. OPTIONAL THERMOSTATS ARE PROVIDED WHEN SPECIFIED.
3. ACTUAL NUMBER OF INTERNAL PARALLEL CIRCUITS MAY BE A MULTIPLE OF THOSE SHOWN ABOVE.
4. LEAD COLORS ARE OPTIONAL. LEADS MUST ALWAYS BE NUMBERED AS SHOWN.

CD0005

REV. DESC: REVISE TO SHOW OPTIONAL COLORS			
REV. LTR: E	BY: JLP	REVISED: 01/19/99 10:15	TDR: 0171435
S00000		FILE: AAA00005140	MDL: -
		MTL: -	

BALDOR ELECTRIC Co.

3PH, DV, 9 LEADS