

BALDOR® • RELIANCE 

Product Information Packet

VJPFPM2516T

25//20HP,3515//2920RPM,3PH,60//50HZ,256J

| Part Detail | | | | | | | |
|-------------|--------|-------------|------------|-------------|--------|---------------|------------|
| Revision: | G | Status: | PRD/A | Change #: | | Proprietary: | No |
| Type: | AC | Elec. Spec: | 39WGX927 | CD Diagram: | CD0104 | Mfg Plant: | |
| Mech. Spec: | 39N092 | Layout: | 39LYN092 | Poles: | 02 | Created Date: | 12-09-2015 |
| Base: | N | Eff. Date: | 08-22-2018 | Leads: | 12#10 | | |

| Specs | | | |
|---------------------------------|-------------------|--------------------------------|-----------------------|
| Catalog Number: | VJPFPM2516T | Front Shaft Indicator: | None |
| Enclosure: | OPSB | Heater Indicator: | No Heater |
| Frame: | 256JP | Insulation Class: | F |
| Frame Material: | Steel | Inverter Code: | Not Inverter |
| Output @ Frequency: | 20.000 HP @ 50 HZ | KVA Code: | F |
| | 25.000 HP @ 60 HZ | Lifting Lugs: | Vertical Lifting Lugs |
| Synchronous Speed @ Frequency: | 3000 RPM @ 50 HZ | Locked Bearing Indicator: | Locked Bearing |
| Voltage @ Frequency: | 380.0 V @ 50 HZ | Motor Lead Quantity/Wire Size: | 12 @ 10 AWG |
| | 230.0 V @ 60 HZ | Motor Lead Exit: | Ko Box |
| | 190.0 V @ 50 HZ | Motor Lead Termination: | Flying Leads |
| | 460.0 V @ 60 HZ | Motor Type: | 3934M |
| XP Class and Group: | None | Mounting Arrangement: | F1 |
| XP Division: | Not Applicable | Power Factor: | 88 |
| Agency Approvals: | UL | Product Family: | Fire Pump Motor |
| | CSA EEV | Pulley End Bearing Type: | Ball |
| Auxillary Box: | No Auxillary Box | Pulley Face Code: | C-Face |
| Auxillary Box Lead Termination: | None | Pulley Shaft Indicator: | Tapped & Key |
| Base Indicator: | No Mounting | Rodent Screen: | Included |

| | | | |
|---------------------------------------|---------------------------|------------------------------------|-----------------------|
| Bearing Grease Type: | Polyrex EM (-20F +300F) | Shaft Extension Location: | Pulley End |
| Blower: | None | Shaft Ground Indicator: | No Shaft Grounding |
| Current @ Voltage: | 58.000 A @ 230.0 V | Shaft Rotation: | Reversible |
| | 56.000 A @ 190.0 V | Shaft Slinger Indicator: | Shaft Slinger |
| | 29.000 A @ 460.0 V | Speed Code: | Single Speed |
| | 28.000 A @ 380.0 V | Motor Standards: | NEMA |
| Design Code: | B | Starting Method: | Wye Start - Delta Run |
| Drip Cover: | Drip Cover | Thermal Device - Bearing: | None |
| Duty Rating: | CONT | Thermal Device - Winding: | None |
| Electrically Isolated Bearing: | Not Electrically Isolated | Vibration Sensor Indicator: | No Vibration Sensor |
| Feedback Device: | NO FEEDBACK | Winding Thermal 1: | None |
| Front Face Code: | Standard | Winding Thermal 2: | None |

| Nameplate NP3454L | | | | | | | | | | | |
|-------------------|--------------|----------|------|-----------|----------|-------|---------|--------|------|----------|------------|
| CAT.NO. | VJPFPM2516T | | | | CUST P/N | | | | | I.P. | 23 |
| SPEC. | 39N092X927H2 | | | | SER.NO. | | | | | FRAME | 256JP |
| HZ | 60 | HP | 25 | RPM | 3515 | HZ | 50 | HP | 20 | RPM | 2920 |
| VOLTS | 230/460 | | | CODE | F | VOLTS | 190/380 | | | CODE | F |
| AMPS | 58/29 | | | DES | B | AMPS | 56/28 | | | DES | B |
| EFF | 91 | SER.F. | 1.15 | PF | 88 | EFF | 90.2 | SER.F. | 1.15 | PF | 88 |
| RATING | 40C AMB-CONT | | | | DE BRG | 6309 | | | | GREASE | POLYREX EM |
| BLANK | | | | | ODE BRG | 6208 | | | | MTR. WT. | 213 |
| | | | | | CLASS | F | | PH | 3 | | |
| | | | | | ENCL | OPSB | | CC | 010A | | |
| HTR-VOLTS | | HTR-AMPS | | HTR-WATTS | | | | | | | |

| Parts List | | |
|-------------|--|----------|
| Part Number | Description | Quantity |
| SA311959 | SA 39N092X927H2 | 1.000 EA |
| RA299399 | RA 39N092X927H2 | 1.000 EA |
| HA6361A01 | LIFTING LUG FOR 37, 39 & 40 FRAME ZINC | 2.000 EA |
| HA6016 | ADAPTER, CAST CONDUIT BOX | 1.000 EA |
| 09CB3002SP | CB W/1.38 LEAD HOLE FOR 37, 39, 307 & 30 | 1.000 EA |
| 51XW2520A12 | .25-20 X .75, TAPTITE II, HEX WSHR SLTD | 2.000 EA |
| HW1001A25 | LOCKWASHER 1/4, ZINC PLT .493 OD, .255 I | 2.000 EA |
| WD1000B16 | T&B CX70TN TERMINAL | 1.000 EA |
| 59XW2520G07 | .25-20X.44,HEX SER WSHR,TAPTITE 2,GREEN | 1.000 EA |
| 39EP3200A02 | FR E P, MACH - DR CVR MTG | 1.000 EA |
| HW5100A08 | W3118-035 WVY WSHR (WB) | 1.000 EA |
| HA1101A01 | RODENT SCREEN, 39 MTR | 1.000 EA |
| 11XW1032G06 | 10-32 X .38, TAPTITE II, HEX WSHR SLTD U | 4.000 EA |
| 39EP3400A03 | STD FACE MTD ENDPLATE, 309 BRG W/BAFFLE | 1.000 EA |
| HA2009A04 | 39-81 SLINGER (STERLING) | 1.000 EA |
| 80XN1032A06 | 10-32 X 3/8 SET SC HEX SOCK | 1.000 EA |
| 10XN2520K28 | 1/4-20 X 1.75" HX HD SCRWGRADE 5, ZINC P | 4.000 EA |
| HW1001A25 | LOCKWASHER 1/4, ZINC PLT .493 OD, .255 I | 4.000 EA |
| HA1101A03 | RODENT SCREEN, 39 FACE MTD.E.P. | 1.000 EA |
| 11XW1032G06 | 10-32 X .38, TAPTITE II, HEX WSHR SLTD U | 4.000 EA |
| HW1001A38 | LOCKWASHER 3/8, ZINC PLT .688 OD, .382 I | 8.000 EA |
| XY3816A12 | 3/8-16 FINISHED NUT | 8.000 EA |
| HA7205 | "L" SHAPE LIFTING LUG FOR 37,39 & 40 FRA | 2.000 EA |
| HW1001A38 | LOCKWASHER 3/8, ZINC PLT .688 OD, .382 I | 1.000 EA |

| Parts List (continued) | | |
|------------------------|--|----------|
| Part Number | Description | Quantity |
| 39FH4500A01 | DRIP COVER, STAMPED | 1.000 EA |
| HA2001B08 | SPL SPACER FOR AIR DEFLECTOR .50 O.D. X | 2.000 EA |
| 10XN2520K16 | 1/4-20 X 1" HX HD SCRW GRADE 5, ZINC P | 2.000 EA |
| 09CB3501SP | CONDUIT BOX LID FOR 09CB3001 & 09CB3002 | 1.000 EA |
| 51XW2520A12 | .25-20 X .75, TAPTITE II, HEX WSHR SLTD | 2.000 EA |
| HW2501E18 | KEY, 1/4 SQ X 2.000 | 1.000 EA |
| LB1115N | LABEL,LIFTING DEVICE (ON ROLLS) | 1.000 EA |
| LB1182 | WARNING LABEL FOR MOTORS WITH EYENUTS | 2.000 EA |
| PK6016 | BASELESS FOOT BRACKET FOR 39 & 40 FRAME | 3.000 EA |
| 10XN5013K20 | 1/2-13 X 1.25 LON HEX HD SCREW SAME AS | 2.000 EA |
| HW1000A50 | 1/2 SAE FLAT WASHERS | 2.000 EA |
| XY3816A12 | 3/8-16 FINISHED NUT | 1.000 EA |
| 39AD2002B01 | BAFFLE PLATE 39 OPEN, SLOTTED BAND MTRS | 1.000 EA |
| HA4051A00 | PLASTIC CAP FOR GREASE FITTING | 1.000 EA |
| HW4500A03 | GREASE FITTING, .125 NPT 1610(ALEMITE) 8 | 1.000 EA |
| HW4500A17 | 317400 ALEMITE GREASE RELIEF | 1.000 EA |
| MJ1000A02 | GREASE, POLYREX EM EXXON (USe 4824-15A) | 0.030 LB |
| 39AD2002B01 | BAFFLE PLATE 39 OPEN, SLOTTED BAND MTRS | 1.000 EA |
| HA4051A00 | PLASTIC CAP FOR GREASE FITTING | 1.000 EA |
| HW4500A03 | GREASE FITTING, .125 NPT 1610(ALEMITE) 8 | 1.000 EA |
| HW4500A17 | 317400 ALEMITE GREASE RELIEF | 1.000 EA |
| HA3154A05 | THRUBOLT STUD 3/8-16 X 16.875 | 4.000 EA |
| MG1025R44 | WILKOFAS, 784.109, CARMINE RED #3002 | 0.050 GA |
| 85XU0407S04 | 4X1/4 U DRIVE PIN STAINLESS | 4.000 EA |

Product Information Packet: VJPFPM2516T - 25//20HP,3515//2920RPM,3PH,60//50HZ,256J

| | | |
|-----------|--|----------|
| LB1119N | WARNING LABEL | 1.000 EA |
| LC0104A01 | CONNECTION DIAGRAM | 1.000 EA |
| NP3454L | ALUM FIRE PUMP MOTOR(LEGACY/BALDOR ONLY) | 1.000 EA |
| 40PA1000 | PACKAGING GROUP | 1.000 EA |
| MN416A01 | TAG-INSTAL-MAINT no wire (1200/bx) 5/18 | 1.000 EA |

AC Induction Motor Performance Data

Record # 53766 - Typical performance - not guaranteed values

| | | |
|-------------------------------|--------------------|------------------------|
| Winding: 39WGX927-R001 | Type: 3934M | Enclosure: OPSB |
|-------------------------------|--------------------|------------------------|

| Nameplate Data | | | | 460 V, 60 Hz: High Voltage Connection | |
|-----------------------|------------------|--------------|----|--|----------------|
| Rated Output (HP) | 25//20 | | | Full Load Torque | 37.5 LB-FT |
| Volts | 230/460//190/380 | | | Start Configuration | direct on line |
| Full Load Amps | 58/29//56/28 | | | Breakdown Torque | 109 LB-FT |
| R.P.M. | 3515//2920 | | | Pull-up Torque | 40.4 LB-FT |
| Hz | 60//50 | Phase | 3 | Locked-rotor Torque | 49.7 LB-FT |
| NEMA Design Code | B | KVA Code | F | Starting Current | 174 A |
| Service Factor (S.F.) | 1.15 | | | No-load Current | 8.31 A |
| NEMA Nom. Eff. | 91 | Power Factor | 88 | Line-line Res. @ 25°C | 0.45684 Ω |
| Rating - Duty | 40C AMB-CONT | | | Temp. Rise @ Rated Load | 40°C |
| S.F. Amps | | | | Temp. Rise @ S.F. Load | 51°C |

Load Characteristics 460 V, 60 Hz, 25 HP

| % of Rated Load | 25 | 50 | 75 | 100 | 125 | 150 | S.F. |
|-----------------|--------|--------|--------|--------|--------|--------|------|
| Power Factor | 60 | 79 | 86 | 88 | 89 | 89 | 89 |
| Efficiency | 90.2 | 92.7 | 92.6 | 91.7 | 90.3 | 88.6 | 90.9 |
| Speed | 3583.9 | 3564.3 | 3542.5 | 3519.2 | 3491.2 | 3460.7 | 3502 |
| Line amperes | 11 | 15.9 | 22.2 | 29 | 36.7 | 44.8 | 33.6 |

Performance Graph at 460V, 60Hz, 25.0HP Typical performance - Not guaranteed values

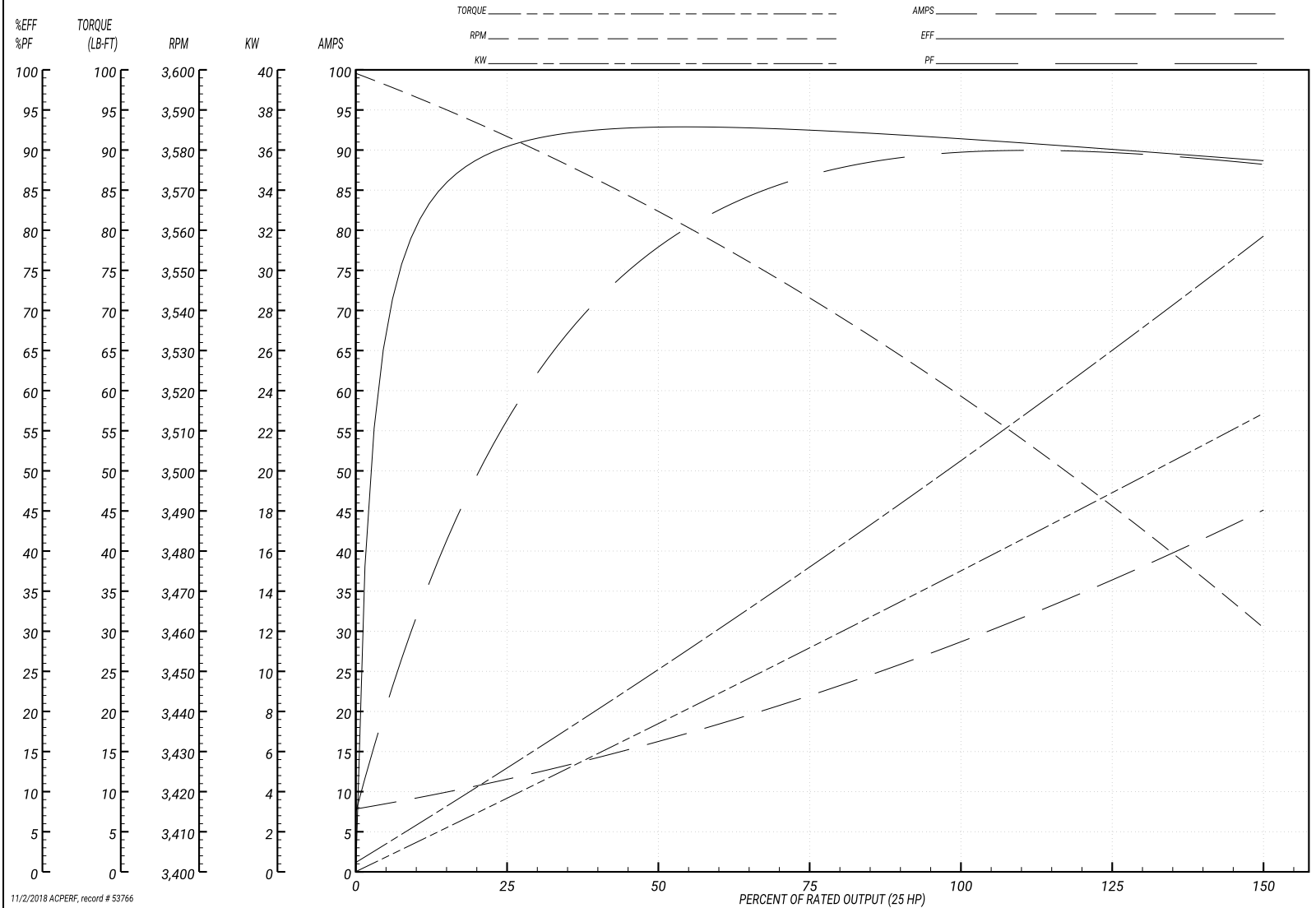
BALDOR ELECTRIC COMPANY

WINDING # 39WGX927

Typical performance - not guaranteed values.

25 HP 3 PH 60 HZ 3519.2 RPM 460 V 3934M

TORQUES(LB-FT): PO=109 PU=40.4 LR=49.7 LRA=174



11/2/2018 ACPERF, record # 53766

AC Induction Motor Performance Data

Record # 53767 - Typical performance - not guaranteed values

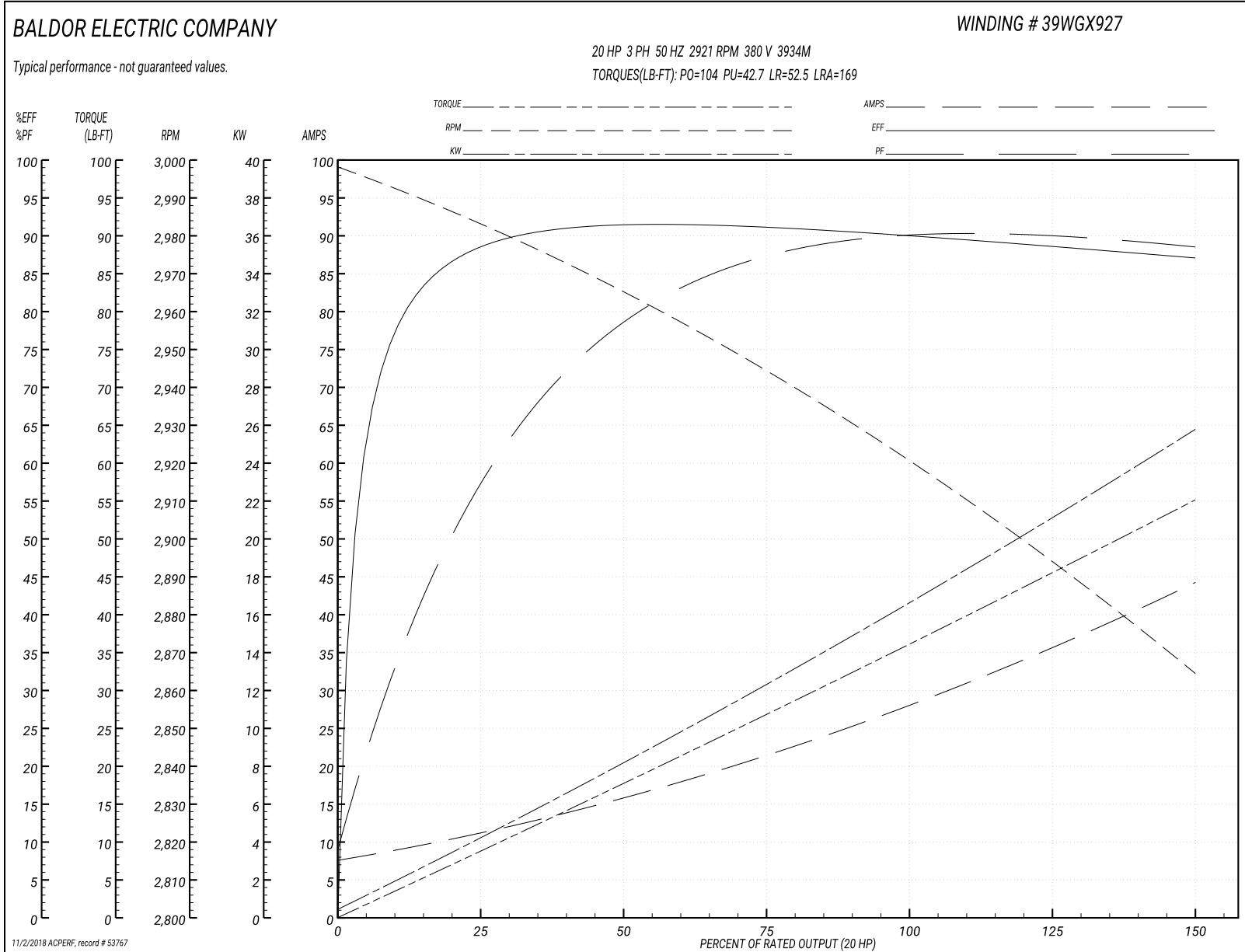
| | | |
|-------------------------------|--------------------|------------------------|
| Winding: 39WGX927-R001 | Type: 3934M | Enclosure: OPSB |
|-------------------------------|--------------------|------------------------|

| Nameplate Data | | | | 380 V, 50 Hz: High Voltage Connection | |
|-----------------------|------------------|--------------|----|--|--------------------------|
| Rated Output (HP) | 25//20 | | | Full Load Torque | 36.2 LB-FT |
| Volts | 230/460//190/380 | | | Start Configuration | direct on line |
| Full Load Amps | 58/29//56/28 | | | Breakdown Torque | 104 LB-FT |
| R.P.M. | 3515//2920 | | | Pull-up Torque | 42.7 LB-FT |
| Hz | 60//50 | Phase | 3 | Locked-rotor Torque | 52.5 LB-FT |
| NEMA Design Code | B | KVA Code | F | Starting Current | 169 A |
| Service Factor (S.F.) | 1.15 | | | No-load Current | 8.02 A |
| NEMA Nom. Eff. | 91 | Power Factor | 88 | Line-line Res. @ 25°C | 0.438 Ω |
| Rating - Duty | 40C AMB-CONT | | | Temp. Rise @ Rated Load | 40°C |
| S.F. Amps | | | | Temp. Rise @ S.F. Load | 51°C |
| | | | | Locked-rotor Power Factor | 33.9 |
| | | | | Rotor inertia | 0.868 LB-FT ² |

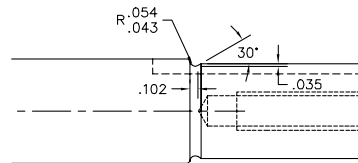
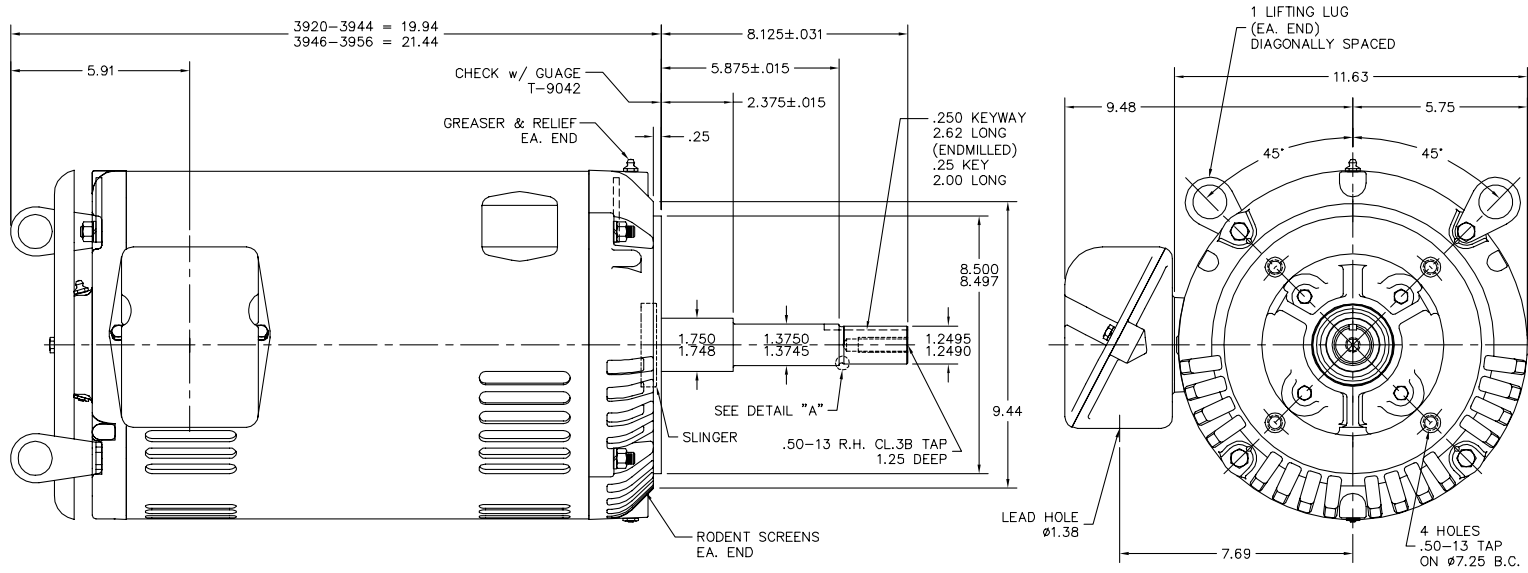
Load Characteristics 380 V, 50 Hz, 20 HP

| % of Rated Load | 25 | 50 | 75 | 100 | 125 | 150 | S.F. |
|-----------------|------|------|------|------|------|------|------|
| Power Factor | 61 | 80 | 86 | 89 | 89 | 89 | 89 |
| Efficiency | 88 | 90.9 | 91.1 | 90.3 | 88.8 | 86.9 | 90.9 |
| Speed | 2984 | 2964 | 2944 | 2921 | 2894 | 2864 | 3502 |
| Line amperes | 10.7 | 15.5 | 21.7 | 28.4 | 36 | 44 | 33.6 |

Performance Graph at 380V, 50Hz, 20.0HP Typical performance - Not guaranteed values



39L.YN092



DETAIL "A"
SCALE = .75

CUSTOMER IS RESPONSIBLE FOR DETERMINING THAT BALDOR'S PRODUCT WILL PERFORM SUITABLY IN THE INTENDED APPLICATION.

| | |
|---|------------------------------|
| REV. DESC: REVISE LAYOUT TO SHOW NEW LOC. OF NP | TDR: 000000507956 |
| REV. LTR: H | VERSION: 04 |
| FILE: \AAA\00068\481 | REVISED: 01:10:42 08/13/2009 |
| MTL: - | BY: ENGREHO |

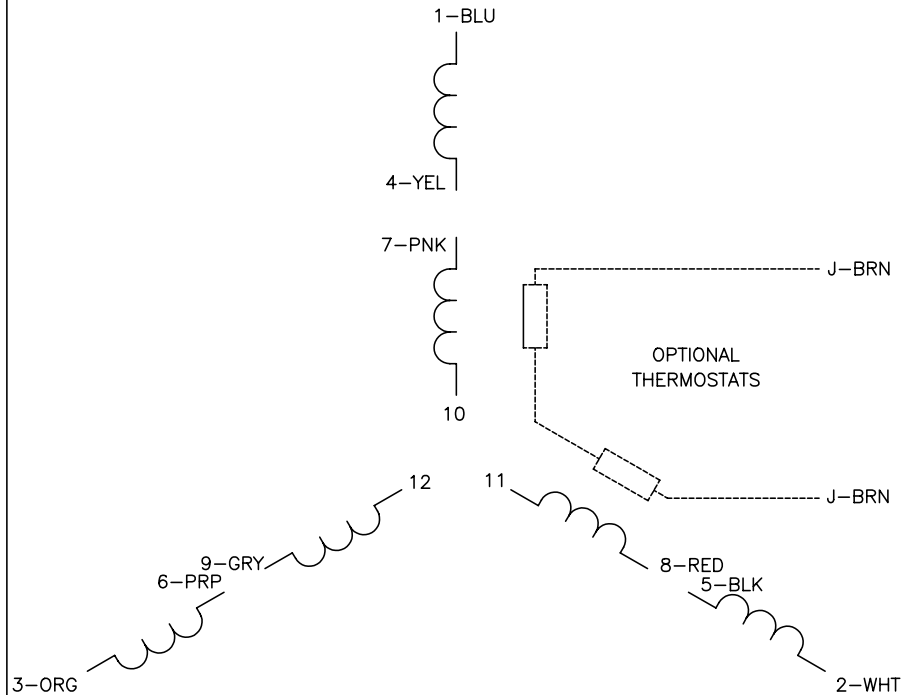
BALDOR • DODGE • RELIANCE

VERT OPSB 254-6JP; ROD SCREENS; VER LIFT; DRIP COVER

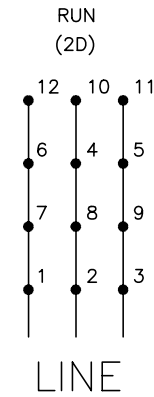
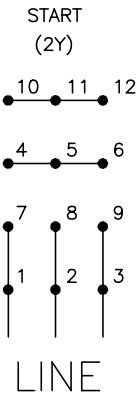
SH 1 of 1

39L.YN092

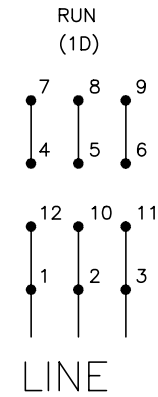
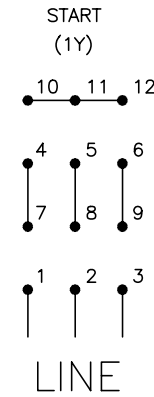
CD0104



LOW VOLTAGE



HIGH VOLTAGE



NOTES:

1. INTERCHANGE ANY TWO LINE LEADS TO REVERSE ROTATION.
2. OPTIONAL THERMOSTATS ARE PROVIDED WHEN SPECIFIED.
3. ACTUAL NUMBER OF INTERNAL PARALLEL CIRCUITS MAY BE A MULTIPLE OF THOSE SHOWN ABOVE.
4. LEAD COLORS ARE OPTIONAL. LEADS MUST ALWAYS BE NUMBERED AS SHOWN.

| | | | |
|---|---------|------------------------|--------------|
| REV. DESC: REVISE TO SHOW OPTIONAL COLORS | | | |
| REV. LTR: C | BY: JLP | REVISED: 01/19/99 4:24 | TDR: 0171435 |
| 401000 | | FILE: AAA00008377 | MDL: - |
| | | MTL: - | |

BALDOR ELECTRIC Co.

3PH, DV, 12 LEADS, Y START/D RUN

CD0104

Marketing maintained PDF of MN416:

<http://www.baldor.com/support/Literature/Load.ashx/MN416?ManNumber=MN416>