

**BALDOR® • RELIANCE** 

**Product Information Packet**

**VJPFPM2538T**

**40//30HP,3500//2910RPM,3PH,60//50HZ,286J**

Part Detail							
Revision:	M	Status:	PRD/A	Change #:		Proprietary:	No
Type:	AC	Elec. Spec:	39WGX928	CD Diagram:	CD0104	Mfg Plant:	
Mech. Spec:	39T043	Layout:	39LYT043	Poles:	02	Created Date:	01-13-2016
Base:	N	Eff. Date:	09-24-2018	Leads:	12#10		

Specs			
Catalog Number:	VJPFPM2538T	Front Shaft Indicator:	None
Enclosure:	OPSB	Heater Indicator:	No Heater
Frame:	286JP	Insulation Class:	F
Frame Material:	Steel	Inverter Code:	Not Inverter
Output @ Frequency:	30.000 HP @ 50 HZ	KVA Code:	G
	40.000 HP @ 60 HZ	Lifting Lugs:	Vertical Lifting Lugs
Synchronous Speed @ Frequency:	3000 RPM @ 50 HZ	Locked Bearing Indicator:	Locked Bearing
Voltage @ Frequency:	380.0 V @ 50 HZ	Motor Lead Quantity/Wire Size:	12 @ 10 AWG
	230.0 V @ 60 HZ	Motor Lead Exit:	Ko Box
	190.0 V @ 50 HZ	Motor Lead Termination:	Flying Leads
	460.0 V @ 60 HZ	Motor Type:	3954M
XP Class and Group:	None	Mounting Arrangement:	F1
XP Division:	Not Applicable	Power Factor:	91
Agency Approvals:	UL	Product Family:	Fire Pump Motor
	CSA EEV	Pulley End Bearing Type:	Ball
Auxillary Box:	No Auxillary Box	Pulley Face Code:	C-Face
Auxillary Box Lead Termination:	None	Pulley Shaft Indicator:	Tapped & Key
Base Indicator:	No Mounting	Rodent Screen:	Included

<b>Bearing Grease Type:</b>	Polyrex EM (-20F +300F)	<b>Shaft Extension Location:</b>	Pulley End
<b>Blower:</b>	None	<b>Shaft Ground Indicator:</b>	No Shaft Grounding
<b>Current @ Voltage:</b>	90.000 A @ 230.0 V	<b>Shaft Rotation:</b>	Reversible
	84.000 A @ 190.0 V	<b>Shaft Slinger Indicator:</b>	Shaft Slinger
	45.000 A @ 460.0 V	<b>Speed Code:</b>	Single Speed
	42.000 A @ 380.0 V	<b>Motor Standards:</b>	NEMA
<b>Design Code:</b>	B	<b>Starting Method:</b>	Wye Start - Delta Run
<b>Drip Cover:</b>	Drip Cover	<b>Thermal Device - Bearing:</b>	None
<b>Duty Rating:</b>	CONT	<b>Thermal Device - Winding:</b>	None
<b>Electrically Isolated Bearing:</b>	Not Electrically Isolated	<b>Vibration Sensor Indicator:</b>	No Vibration Sensor
<b>Feedback Device:</b>	NO FEEDBACK	<b>Winding Thermal 1:</b>	None
<b>Front Face Code:</b>	Drip Cover Mounting	<b>Winding Thermal 2:</b>	None

Nameplate NP3454L											
CAT.NO.	VJPFPM2538T			CUST P/N				I.P.	23		
SPEC.	39T043X928H2			SER.NO.				FRAME	286JP		
HZ	60	HP	40	RPM	3500	HZ	50	HP	30	RPM	2910
VOLTS	230/460			CODE	G	VOLTS	190/380			CODE	G
AMPS	90/45			DES	B	AMPS	84/42			DES	B
EFF	91.7	SER.F.	1.15	PF	91	EFF	91	SER.F.	1.15	PF	91
RATING	40C AMB-CONT			DE BRG	6312			GREASE	POLYREX EM		
BLANK				ODE BRG	6208			MTR. WT.	328		
				CLASS	F			PH	3		
				ENCL	OPSB			CC	010A		
HTR-VOLTS		HTR-AMPS		HTR-WATTS							

Parts List		
Part Number	Description	Quantity
SA313494	SA 39T043X928H2	1.000 EA
RA300955	RA 39T043X928H2	1.000 EA
HW3201A01	1/2-13 EYEBOLT	1.000 EA
09CB2800A01	ADAPTER MACH FOR 09CB3000 AND 10CB3000	1.000 EA
19XW3118A08	.31-18 X .50 HEX WASHER HEAD TAPTITE II	2.000 EA
HW1001A31	LOCKWASHER 5/16, ZINC PLT.591 OD, .319 I	2.000 EA
WD1000B25	GND LUG, BURNDY L125HP OR T&B L125HP-BB	1.000 EA
19XW3118G08	.31-18X.50,HEX WSHR HD,TAPTITE 2,GREEN	1.000 EA
10CB3000SP	STD KO BOX MODEL 310,312,314 MTRS W/2.00	1.000 EA
19XW3118A12	.31-18 X .75 HEX WASHER HEAD TAPTITE II	4.000 EA
39EP3200A02	FR E P, MACH - DR CVR MTG	1.000 EA
HW5100A08	W3118-035 WVY WSHR (WB)	1.000 EA
HA1101A01	RODENT SCREEN, 39 MTR	1.000 EA
51XW1032A06	10-32 X .38, TAPTITE II, HEX WSHR SLTD S	4.000 EA
39EP1404A09	PUEP MACH, 284-6JP OPEN, RODENT SCREEN	1.000 EA
HA1101A06	RODENT SCREEN FOR 39EP1404	1.000 EA
51XW1032A06	10-32 X .38, TAPTITE II, HEX WSHR SLTD S	6.000 EA
10XN3118K40	5/16-18 X 2.50" HEX HD, GRADE 5	4.000 EA
HW1001A31	LOCKWASHER 5/16, ZINC PLT.591 OD, .319 I	4.000 EA
HW1001A31	LOCKWASHER 5/16, ZINC PLT.591 OD, .319 I	4.000 EA
HA2009A03	SLINGER, ALUMINUM, (AUTO)ANODIZED ALUM	1.000 EA
80XN1032A06	10-32 X 3/8 SET SC HEX SOCK	1.000 EA
HW1001A38	LOCKWASHER 3/8, ZINC PLT .688 OD, .382 I	4.000 EA
HA7205	"L" SHAPE LIFTING LUG FOR 37,39 & 40 FRA	2.000 EA

Parts List (continued)		
Part Number	Description	Quantity
39FH4500A01	DRIP COVER, STAMPED	1.000 EA
10XN2520K16	1/4-20 X 1" HX HD SCRW GRADE 5, ZINC P	2.000 EA
HA2001B08	SPL SPACER FOR AIR DEFLECTOR .50 O.D. X	2.000 EA
10CB3500SP	CONDUIT BOX LID, CAST	1.000 EA
51XW2520A12	.25-20 X .75, TAPTITE II, HEX WSHR SLTD	4.000 EA
HW2501E18	KEY, 1/4 SQ X 2.000	1.000 EA
LB1115N	LABEL,LIFTING DEVICE (ON ROLLS)	1.000 EA
LB1182	WARNING LABEL FOR MOTORS WITH EYENUTS	2.000 EA
PK6016	BASELESS FOOT BRACKET FOR 39 & 40 FRAME	3.000 EA
10XN6311K20	5/8-11X 1 1/4 HEX HD, GRADE 5	2.000 EA
HW1000A63	5/8 SAE FLAT WASHER 1.31 DIA	2.000 EA
XY3816A12	3/8-16 FINISHED NUT	1.000 EA
HW1001A38	LOCKWASHER 3/8, ZINC PLT .688 OD, .382 I	1.000 EA
HW4500A03	GREASE FITTING, .125 NPT 1610(ALEMITE) 8	1.000 EA
HW4500A20	1/8NPT SL PIPE PLUG	1.000 EA
HA4051A00	PLASTIC CAP FOR GREASE FITTING	1.000 EA
HA3113A05	THRUBOLT 3/8 - 16 X 17.250	3.000 EA
HA3154A10	THRUBOLT STUD 3/8-16 X 18.250"	1.000 EA
MJ1000A02	GREASE, POLYREX EM EXXON (USe 4824-15A)	0.030 LB
HW4500A03	GREASE FITTING, .125 NPT 1610(ALEMITE) 8	1.000 EA
HW4500A20	1/8NPT SL PIPE PLUG	1.000 EA
HA4051A00	PLASTIC CAP FOR GREASE FITTING	1.000 EA
MG1025R44	WILKOFAS, 784.109, CARMINE RED #3002	0.050 GA
85XU0407S04	4X1/4 U DRIVE PIN STAINLESS	2.000 EA

Product Information Packet: VJPFPM2538T - 40//30HP,3500//2910RPM,3PH,60//50HZ,286J

39AD2002A01	BAFFLE PLATE 39 OPEN, SLOTTED BAND MTRS	1.000 EA
39AD2002A01	BAFFLE PLATE 39 OPEN, SLOTTED BAND MTRS	1.000 EA
LB1119N	WARNING LABEL	1.000 EA
LC0104A01	CONNECTION DIAGRAM	1.000 EA
NP3454L	ALUM FIRE PUMP MOTOR(LEGACY/BALDOR ONLY)	1.000 EA
39PA1017	PACKAGING GP TALL CENTERED 09 CRATE	1.000 EA

**AC Induction Motor Performance Data**

Record # 54883 - Typical performance - not guaranteed values

<b>Winding:</b> 39WGX928-R001	<b>Type:</b> 3954M	<b>Enclosure:</b> OPSB
-------------------------------	--------------------	------------------------

Nameplate Data				460 V, 60 Hz: High Voltage Connection	
Rated Output (HP)	40//30			Full Load Torque	60.6 LB-FT
Volts	230/460//190/380			Start Configuration	direct on line
Full Load Amps	90/45//84/42			Breakdown Torque	191 LB-FT
R.P.M.	3500//2910			Pull-up Torque	71.3 LB-FT
Hz	60//50	Phase	3	Locked-rotor Torque	90.5 LB-FT
NEMA Design Code	B	KVA Code	G	Starting Current	285 A
Service Factor (S.F.)	1.15			No-load Current	10.5 A
NEMA Nom. Eff.	91.7	Power Factor	91	Line-line Res. @ 25°C	0.23 Ω
Rating - Duty	40C AMB-CONT			Temp. Rise @ Rated Load	63°C
S.F. Amps				Temp. Rise @ S.F. Load	79°C
				Locked-rotor Power Factor	27.2
				Rotor inertia	1.38 LB-FT <sup>2</sup>

Load Characteristics 460 V, 60 Hz, 40 HP

% of Rated Load	25	50	75	100	125	150	S.F.
Power Factor	68	85	90	91	91	90	91
Efficiency	93.2	94	93.4	91.9	90.3	88.5	91
Speed	3580	3557	3532	3503	3471	3436	3484
Line amperes	15.3	23.9	34	45.3	57.7	70.7	52.7



Performance Graph at 460V, 60Hz, 40.0HP Typical performance - Not guaranteed values

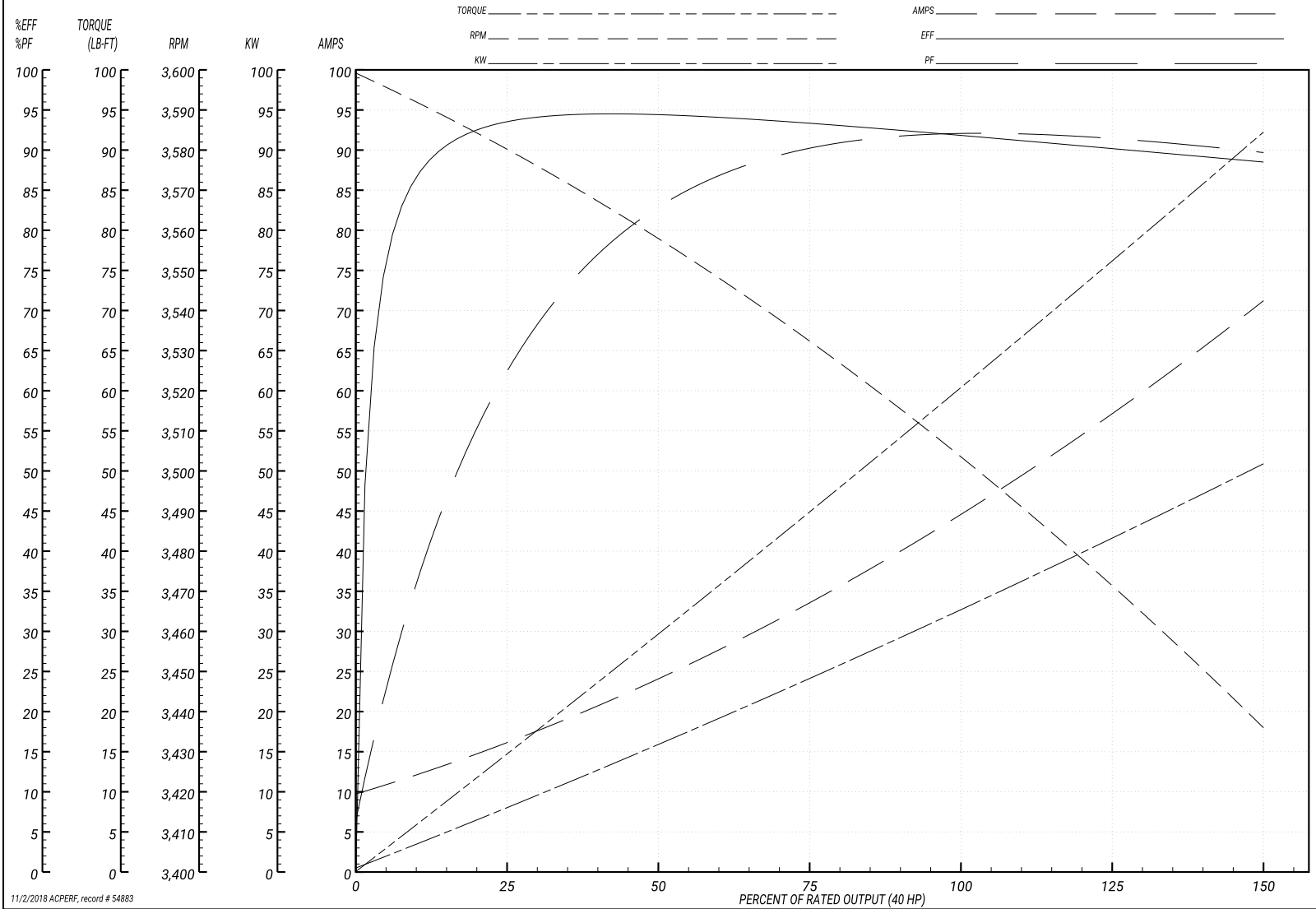
**BALDOR ELECTRIC COMPANY**

WINDING # 39WGX928

Typical performance - not guaranteed values.

40 HP 3 PH 60 HZ 3503 RPM 460 V 3954M

TORQUES(LB-FT): PO=191 PU=71.3 LR=90.5 LRA=285



11/2/2018 ACPERF, record # 54883

**AC Induction Motor Performance Data**

Record # 54884 - Typical performance - not guaranteed values

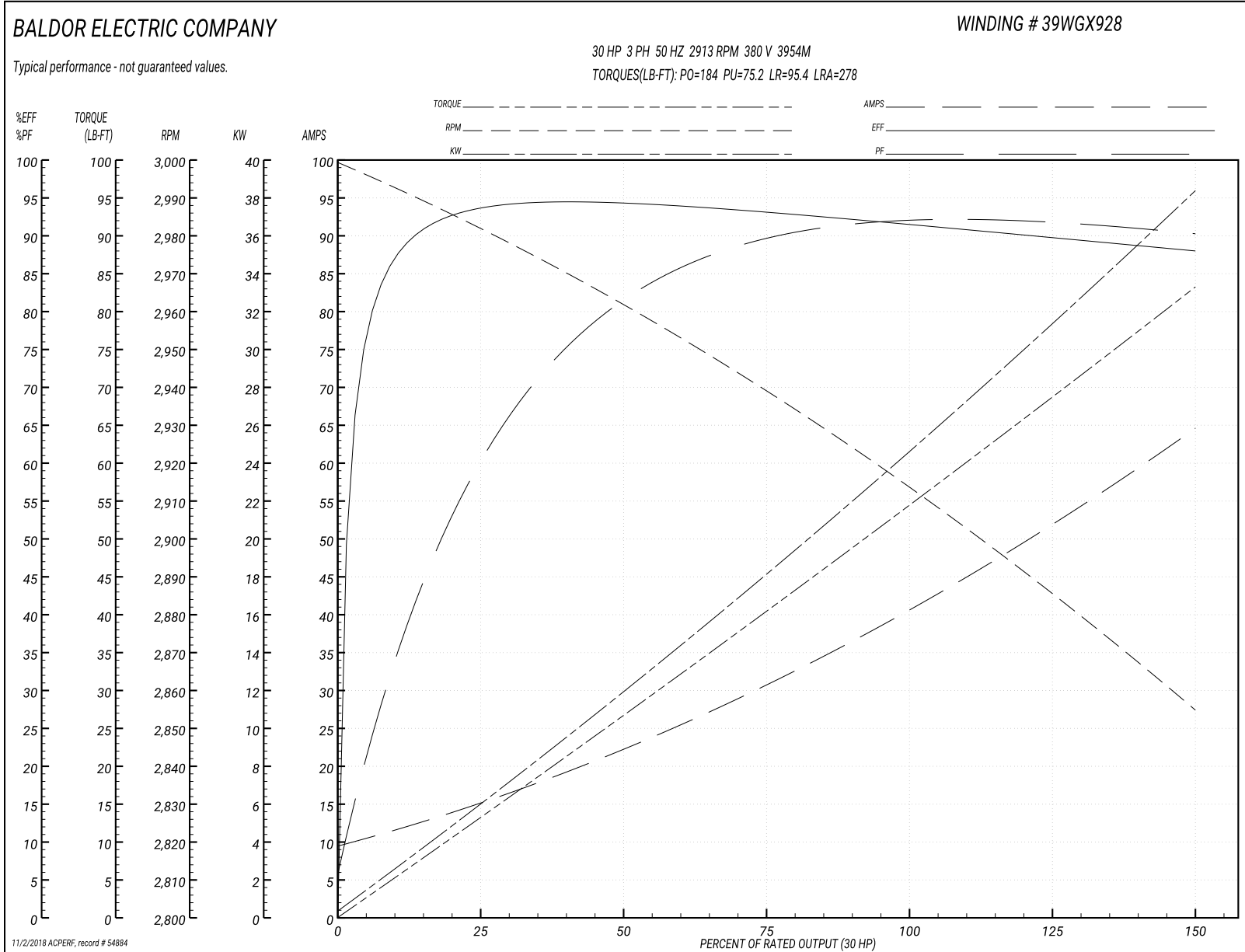
<b>Winding:</b> 39WGX928-R001	<b>Type:</b> 3954M	<b>Enclosure:</b> OPSB
-------------------------------	--------------------	------------------------

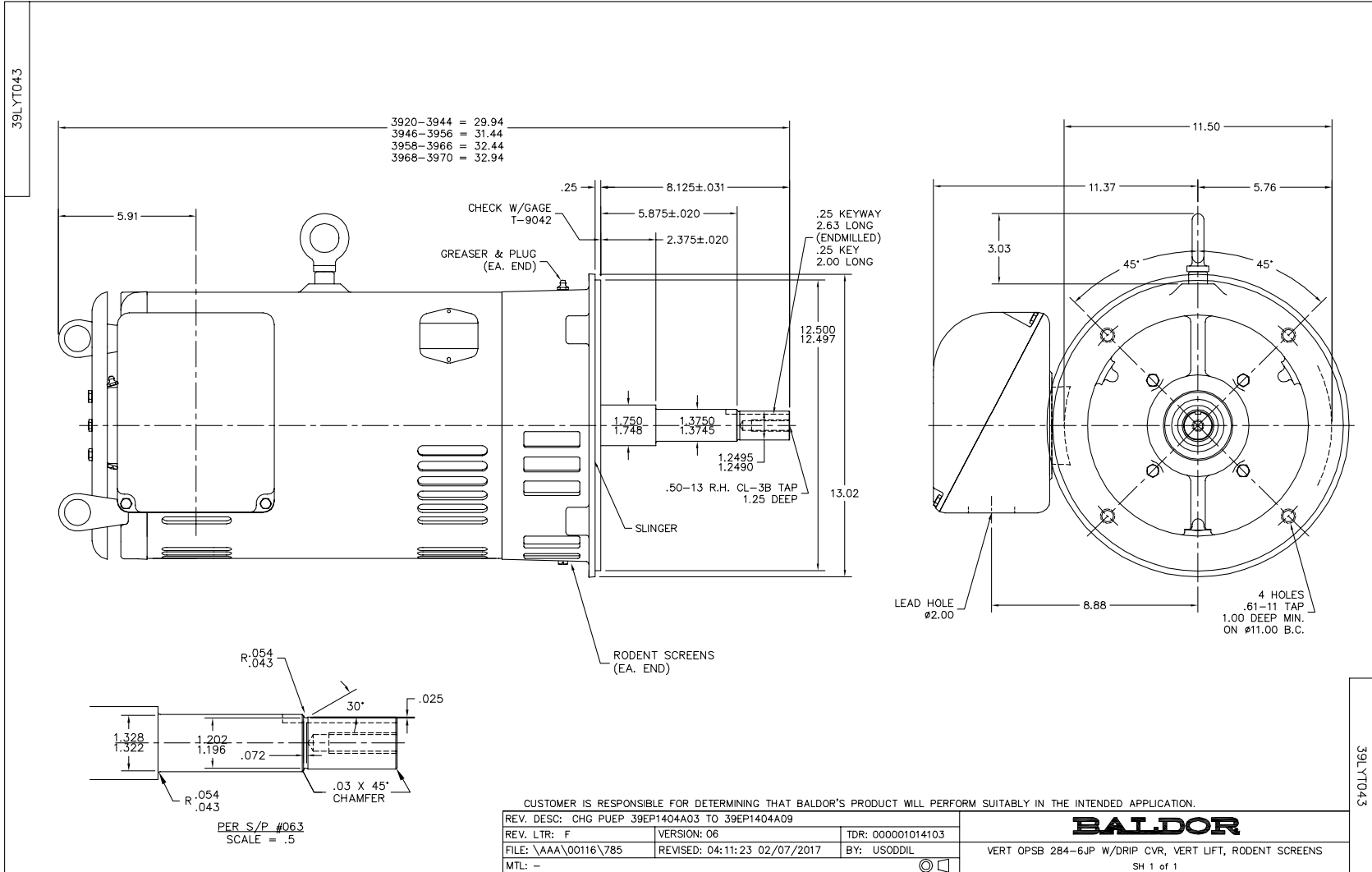
Nameplate Data				380 V, 50 Hz: High Voltage Connection	
Rated Output (HP)	40//30			Full Load Torque	54.6 LB-FT
Volts	230/460//190/380			Start Configuration	direct on line
Full Load Amps	90/45//84/42			Breakdown Torque	184 LB-FT
R.P.M.	3500//2910			Pull-up Torque	75.2 LB-FT
Hz	60//50	Phase	3	Locked-rotor Torque	95.4 LB-FT
NEMA Design Code	B	KVA Code	G	Starting Current	278 A
Service Factor (S.F.)	1.15			No-load Current	10.2 A
NEMA Nom. Eff.	91.7	Power Factor	91	Line-line Res. @ 25°C	0.23 Ω
Rating - Duty	40C AMB-CONT			Temp. Rise @ Rated Load	55°C
S.F. Amps				Temp. Rise @ S.F. Load	70°C
				Locked-rotor Power Factor	30.6
				Rotor inertia	1.38 LB-FT <sup>2</sup>

**Load Characteristics 380 V, 50 Hz, 30 HP**

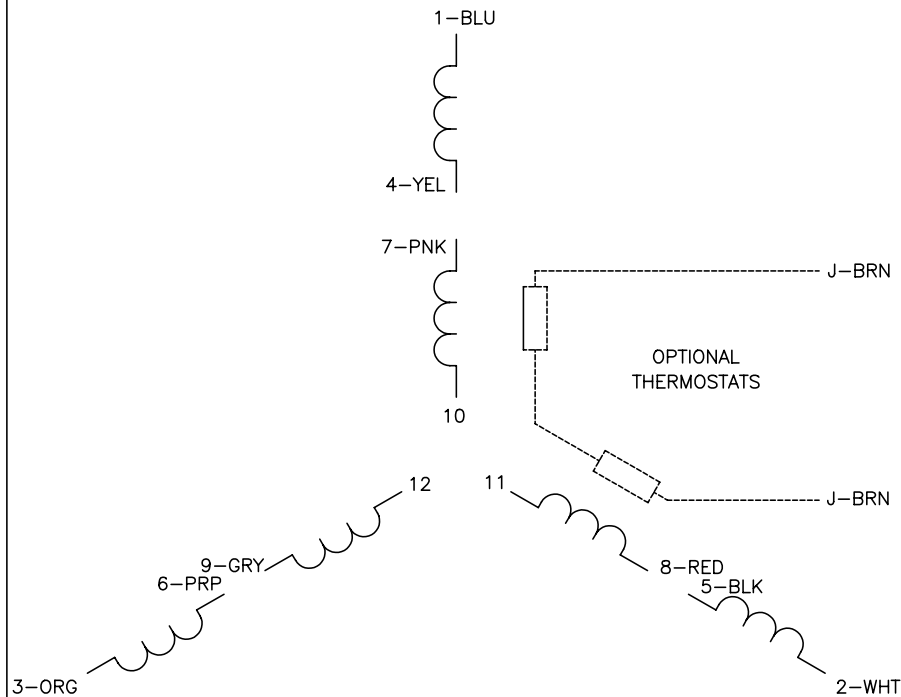
% of Rated Load	25	50	75	100	125	150	S.F.
Power Factor	66	84	89	91	91	91	91
Efficiency	93.5	94	93.1	91.6	89.9	87.9	90.6
Speed	2982	2961	2939	2913	2885	2855	2896
Line amperes	14.4	22	31.1	41.3	52.5	64.1	48

Performance Graph at 380V, 50Hz, 30.0HP Typical performance - Not guaranteed values



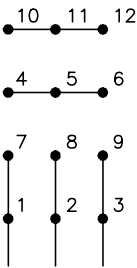


CD0104



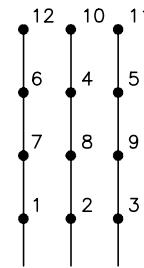
**LOW VOLTAGE**

START (2Y)



LINE

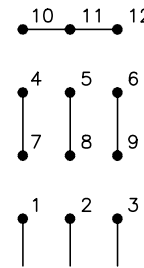
RUN (2D)



LINE

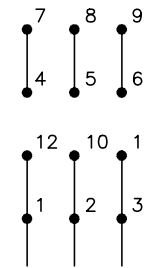
**HIGH VOLTAGE**

START (1Y)



LINE

RUN (1D)



LINE

NOTES:

1. INTERCHANGE ANY TWO LINE LEADS TO REVERSE ROTATION.
2. OPTIONAL THERMOSTATS ARE PROVIDED WHEN SPECIFIED.
3. ACTUAL NUMBER OF INTERNAL PARALLEL CIRCUITS MAY BE A MULTIPLE OF THOSE SHOWN ABOVE.
4. LEAD COLORS ARE OPTIONAL. LEADS MUST ALWAYS BE NUMBERED AS SHOWN.

REV. DESC: REVISE TO SHOW OPTIONAL COLORS			
REV. LTR: C	BY: JLP	REVISED: 01/19/99 4:24	TDR: 0171435
CD0104		FILE: AAA00008377	MDL: -
		MTL: -	

**BALDOR ELECTRIC Co.**

3PH, DV, 12 LEADS, Y START/D RUN

CD0104

Marketing maintained PDF of MN416:

<http://www.baldor.com/support/Literature/Load.ashx/MN416?ManNumber=MN416>