

BALDOR® • RELIANCE 

Product Information Packet

VJPFPM2539T

40//30HP, 1770//1470RPM, 3PH, 60//50HZ, 324J

Part Detail							
Revision:	H	Status:	PRD/A	Change #:		Proprietary:	No
Type:	AC	Elec. Spec:	40WG486	CD Diagram:	CD0104	Mfg Plant:	
Mech. Spec:	40L037	Layout:	40LYL037	Poles:	04	Created Date:	09-17-2015
Base:	N	Eff. Date:	08-22-2018	Leads:	12#10		

Specs			
Catalog Number:	VJPFPM2539T	Front Shaft Indicator:	None
Enclosure:	OPSB	Heater Indicator:	No Heater
Frame:	324JP	Insulation Class:	F
Frame Material:	Steel	Inverter Code:	Not Inverter
Output @ Frequency:	30.000 HP @ 50 HZ	KVA Code:	G
	40.000 HP @ 60 HZ	Lifting Lugs:	Vertical Lifting Lugs
Synchronous Speed @ Frequency:	1500 RPM @ 50 HZ	Locked Bearing Indicator:	Locked Bearing
Voltage @ Frequency:	190.0 V @ 50 HZ	Motor Lead Quantity/Wire Size:	12 @ 10 AWG
	460.0 V @ 60 HZ	Motor Lead Exit:	Ko Box
	380.0 V @ 50 HZ	Motor Lead Termination:	Flying Leads
	230.0 V @ 60 HZ	Motor Type:	4052M
Agency Approvals:	UL	Mounting Arrangement:	F1
	CSA EEV	Power Factor:	83
Auxillary Box:	No Auxillary Box	Product Family:	Fire Pump Motor
Auxillary Box Lead Termination:	None	Pulley End Bearing Type:	Ball
Base Indicator:	No Mounting	Pulley Face Code:	C-Face
Bearing Grease Type:	Polyrex EM (-20F +300F)	Pulley Shaft Indicator:	Tapped & Key
Blower:	None	Rodent Screen:	Included

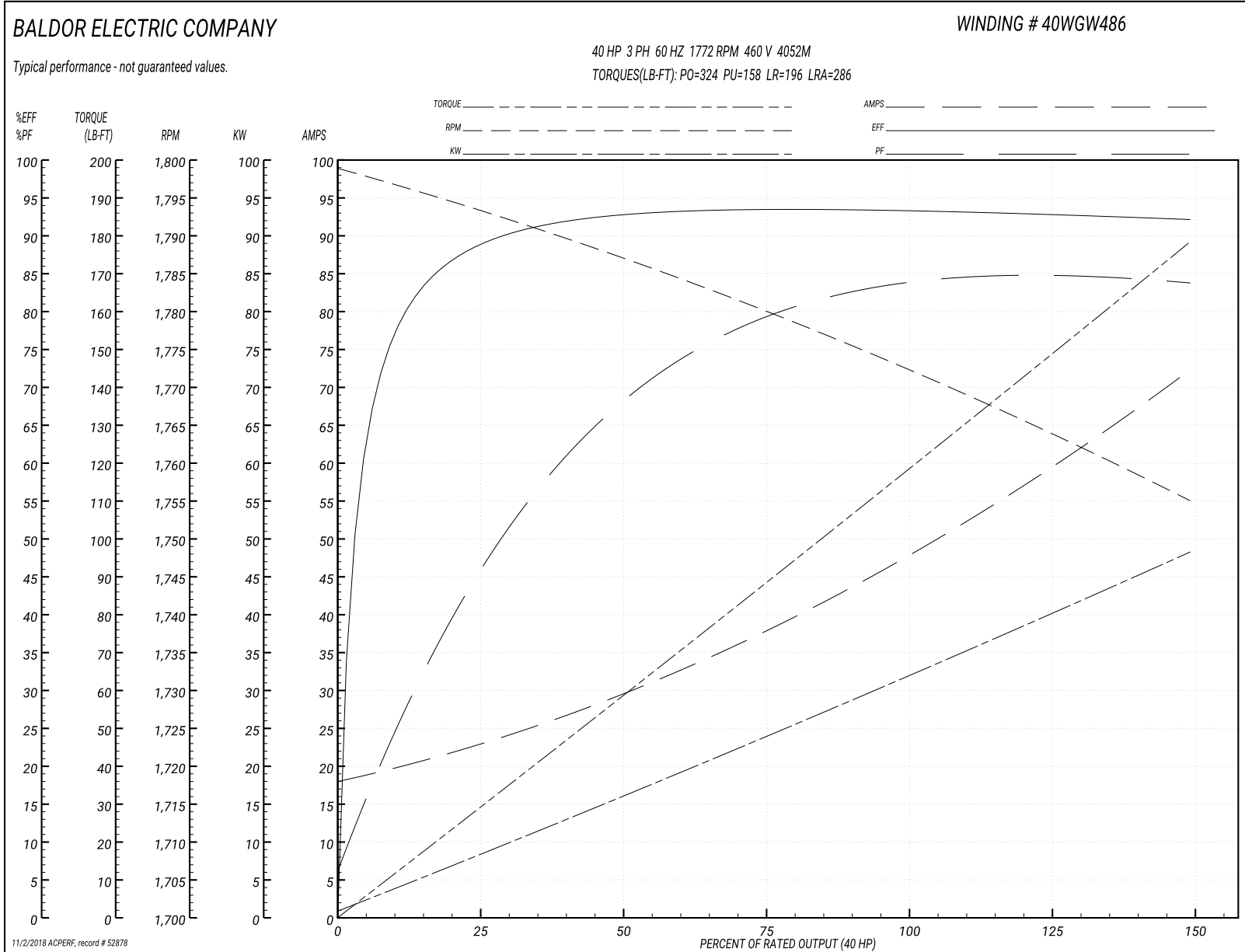
Current @ Voltage:	98.000 A @ 230.0 V	Shaft Extension Location:	Pulley End
	90.000 A @ 190.0 V	Shaft Ground Indicator:	No Shaft Grounding
	49.000 A @ 460.0 V	Shaft Rotation:	Reversible
	45.000 A @ 380.0 V	Shaft Slinger Indicator:	Shaft Slinger
	104.000 A @ 208.0 V	Speed Code:	Single Speed
Design Code:	B	Motor Standards:	NEMA
Drip Cover:	Drip Cover	Starting Method:	Wye Start - Delta Run
Duty Rating:	CONT	Thermal Device - Bearing:	NONE (OLD)
Electrically Isolated Bearing:	Not Electrically Isolated	Thermal Device - Winding:	None
Feedback Device:	NO FEEDBACK	Vibration Sensor Indicator:	No Vibration Sensor
Front Face Code:	Drip Cover Mounting	Winding Thermal 1:	None
		Winding Thermal 2:	None

Nameplate NP3454L											
CAT.NO.	VJPFPM2539T				CUST P/N					I.P.	23
SPEC.	40L037W486H2				SER.NO.					FRAME	324JP
HZ	60	HP	40	RPM	1770	HZ	50	HP	30	RPM	1470
VOLTS	230/460			CODE	G	VOLTS	190/380			CODE	G
AMPS	98/49			DES	B	AMPS	90/45			DES	B
EFF	93	SER.F.	1.15	PF	83	EFF	92.4	SER.F.	1.15	PF	82
RATING	40C AMB-CONT				DE BRG	6312				GREASE	POLYREX EM
BLANK					ODE BRG	6309				MTR. WT.	380
					CLASS	F		PH	3		
					ENCL	OPSB		CC	010A		
HTR-VOLTS		HTR-AMPS		HTR-WATTS							

Parts List		
Part Number	Description	Quantity
SA312112	SA 40L037W486H2	1.000 EA
RA299550	RA 40L037W486H2	1.000 EA
HA6361A01	LIFTING LUG FOR 37, 39 & 40 FRAME ZINC	2.000 EA
HA6017	CAST ADAPTER, 40,42 KOBX	1.000 EA
19XW3118A12	.31-18 X .75 HEX WASHER HEAD TAPTITE II	2.000 EA
HW1001A31	LOCKWASHER 5/16, ZINC PLT.591 OD, .319 I	2.000 EA
WD1000B25	GND LUG, BURNDY L125HP OR T&B L125HP-BB	1.000 EA
19XW3118G08	.31-18X.50,HEX WSHR HD,TAPTITE 2,GREEN	1.000 EA
10CB3001	CONDUIT BOX CAST W/2.500 LEAD HOLE	1.000 EA
19XW3118A12	.31-18 X .75 HEX WASHER HEAD TAPTITE II	4.000 EA
HW1001A31	LOCKWASHER 5/16, ZINC PLT.591 OD, .319 I	4.000 EA
40EP3200A01	STD FREP OPEN 309 BRG W/DRIP COVER	1.000 EA
HA1166A06	RODENT SCREEN FOR 40 ENDPLATE 40EP3200.	1.000 EA
51XW1032A06	10-32 X .38, TAPTITE II, HEX WSHR SLTD S	4.000 EA
HW5100A11	W3917-042 WVY WSHR (WB)	1.000 EA
40EP1401A03	FR ENDPLATE, MACH OPEN NEMA 324-6T W/SCR	1.000 EA
HA1166A02	RODENT SCREEN FOR 40 ENDPLATE 40EP1300A.	1.000 EA
51XW1032A06	10-32 X .38, TAPTITE II, HEX WSHR SLTD S	4.000 EA
10XN3118K40	5/16-18 X 2.50" HEX HD, GRADE 5	4.000 EA
HW1001A31	LOCKWASHER 5/16, ZINC PLT.591 OD, .319 I	4.000 EA
XY3816A12	3/8-16 FINISHED NUT	8.000 EA
HA7205	"L" SHAPE LIFTING LUG FOR 37,39 & 40 FRA	2.000 EA
40FH2500A01	SP'L DRIP COVER MODEL 40- OPEN	1.000 EA
10XN2520K12	1/4-20 X.75 GRD 5	2.000 EA

Parts List (continued)		
Part Number	Description	Quantity
10CB3500SP	CONDUIT BOX LID, CAST	1.000 EA
51XW2520A12	.25-20 X .75, TAPTITE II, HEX WSHR SLTD	4.000 EA
HA2009A04	39-81 SLINGER (STERLING)	1.000 EA
80XN1032A06	10-32 X 3/8 SET SC HEX SOCK	1.000 EA
HW2501E22	KEY, 1/4 SQ X 2.500	1.000 EA
LB1115N	LABEL,LIFTING DEVICE (ON ROLLS)	1.000 EA
HW4500A03	GREASE FITTING, .125 NPT 1610(ALEMITE) 8	1.000 EA
HW4500A20	1/8NPT SL PIPE PLUG	1.000 EA
HA4051A00	PLASTIC CAP FOR GREASE FITTING	1.000 EA
MJ1000A02	GREASE, POLYREX EM EXXON (USe 4824-15A)	0.050 LB
HW4500A03	GREASE FITTING, .125 NPT 1610(ALEMITE) 8	1.000 EA
HW4500A20	1/8NPT SL PIPE PLUG	1.000 EA
HA4051A00	PLASTIC CAP FOR GREASE FITTING	1.000 EA
HA3159A06	THRUBOLT- .38-16 X 19.00 LONG STUD	4.000 EA
MG1025R44	WILKOFASST, 784.109, CARMINE RED #3002	0.050 GA
85XU0407S04	4X1/4 U DRIVE PIN STAINLESS	2.000 EA
40AD2002A01	LEXAN BAFFLE 40 FR OPEN	1.000 EA
40AD2002A01	LEXAN BAFFLE 40 FR OPEN	1.000 EA
LB1119N	WARNING LABEL	1.000 EA
LC0104A01	CONNECTION DIAGRAM	1.000 EA
NP3454L	ALUM FIRE PUMP MOTOR(LEGACY/BALDOR ONLY)	1.000 EA
40PA1010	PACKAGING GROUP, PRINT PK1151A06	1.000 EA
MN416A01	TAG-INSTAL-MAINT no wire (1200/bx) 5/18	1.000 EA

Performance Graph at 460V, 60Hz, 40.0HP Typical performance - Not guaranteed values



AC Induction Motor Performance Data

Record # 52879 - Typical performance - not guaranteed values

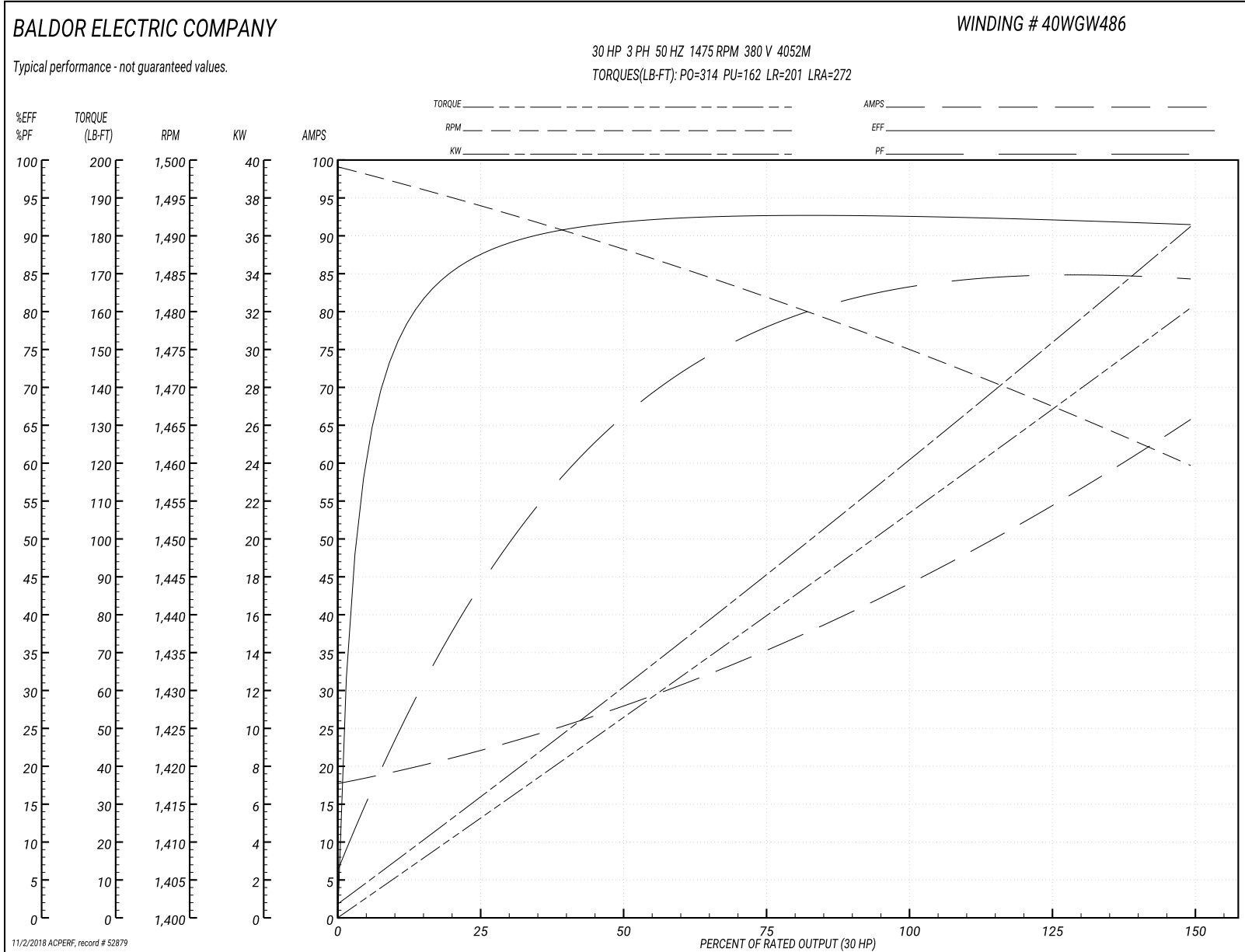
Winding: 40WGW486-R005	Type: 4052M	Enclosure: OPSB
-------------------------------	--------------------	------------------------

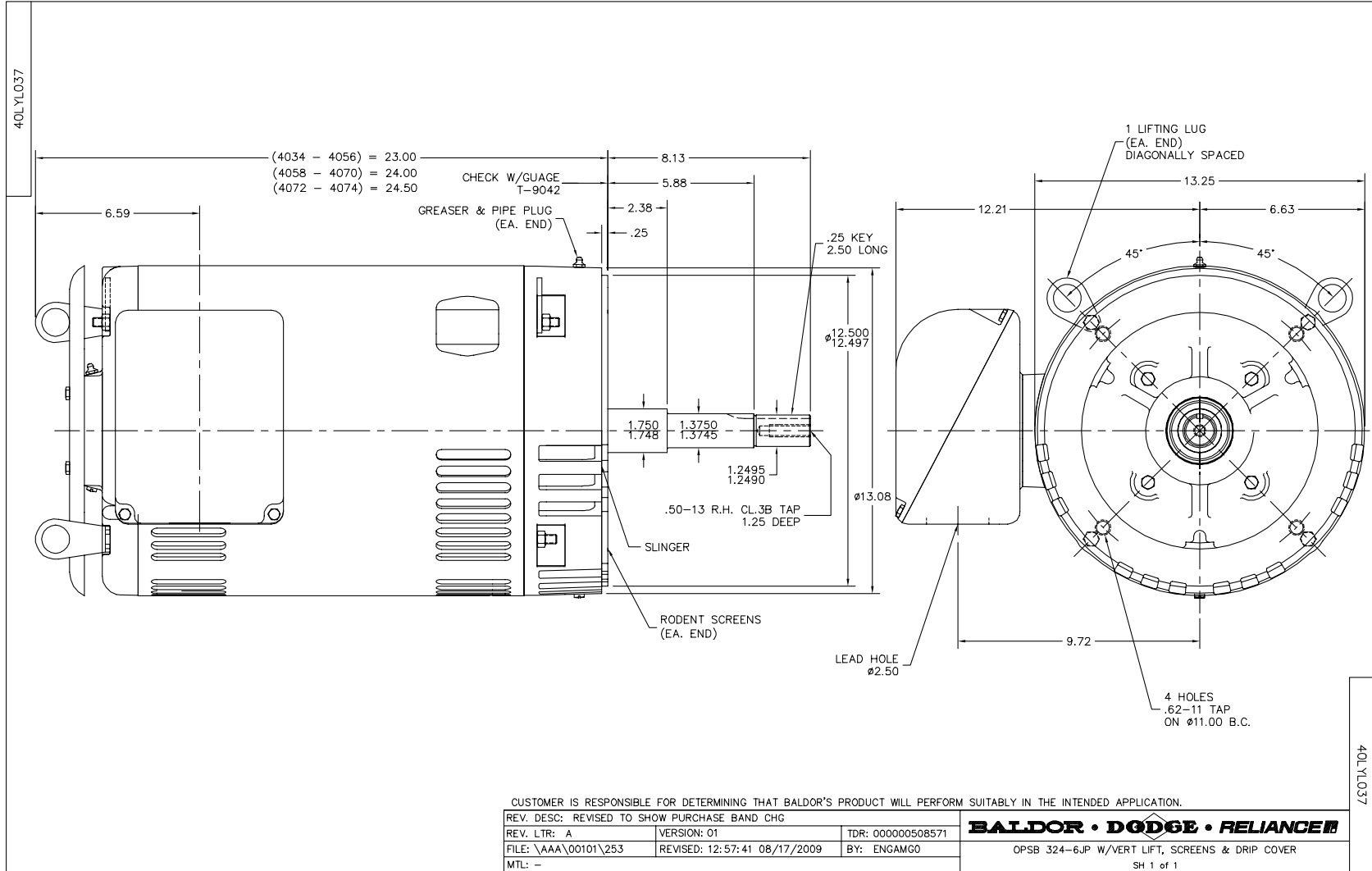
Nameplate Data				380 V, 50 Hz: High Voltage Connection	
Rated Output (HP)	40//30			Full Load Torque	107 LB-FT
Volts	230/460//190/380			Start Configuration	direct on line
Full Load Amps	98/49//90/45			Breakdown Torque	314 LB-FT
R.P.M.	1770//1470			Pull-up Torque	162 LB-FT
Hz	60//50	Phase	3	Locked-rotor Torque	201 LB-FT
NEMA Design Code	B	KVA Code	G	Starting Current	272 A
Service Factor (S.F.)	1.15			No-load Current	18.1 A
NEMA Nom. Eff.	93	Power Factor	83	Line-line Res. @ 25°C	0.185 Ω
Rating - Duty	40C AMB-CONT			Temp. Rise @ Rated Load	36°C
S.F. Amps				Temp. Rise @ S.F. Load	43°C
				Locked-rotor Power Factor	35.1
				Rotor inertia	4.13 LB-FT ²

Load Characteristics 380 V, 50 Hz, 30 HP

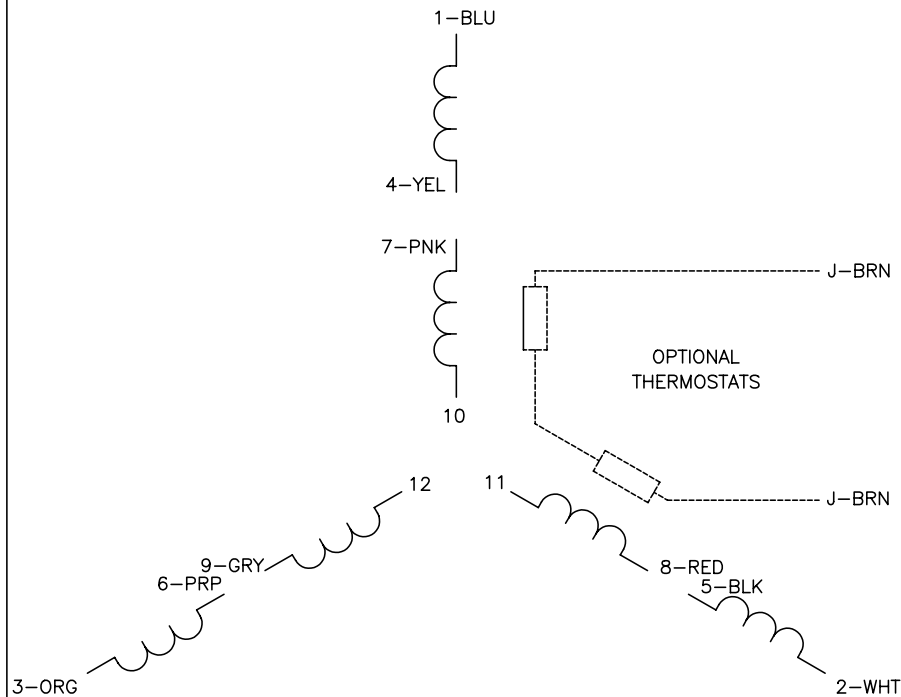
% of Rated Load	25	50	75	100	125	150	S.F.
Power Factor	45	68	78	82	84	85	83
Efficiency	87.8	92	92.8	92.5	92.1	91.5	92.3
Speed	1494	1488	1482	1475	1467	1460	1470
Line amperes	21.8	27.7	35.5	44.7	54.6	65.4	50.6

Performance Graph at 380V, 50Hz, 30.0HP Typical performance - Not guaranteed values

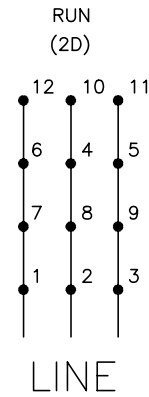
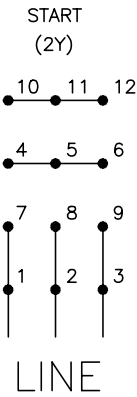




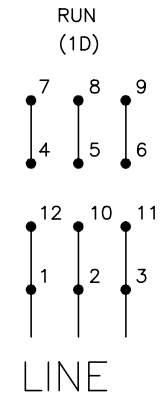
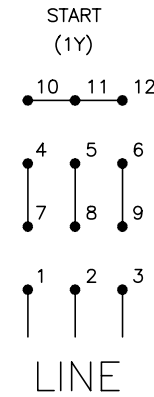
CD0104



LOW VOLTAGE



HIGH VOLTAGE



NOTES:

1. INTERCHANGE ANY TWO LINE LEADS TO REVERSE ROTATION.
2. OPTIONAL THERMOSTATS ARE PROVIDED WHEN SPECIFIED.
3. ACTUAL NUMBER OF INTERNAL PARALLEL CIRCUITS MAY BE A MULTIPLE OF THOSE SHOWN ABOVE.
4. LEAD COLORS ARE OPTIONAL. LEADS MUST ALWAYS BE NUMBERED AS SHOWN.

REV. DESC: REVISE TO SHOW OPTIONAL COLORS			
REV. LTR: C	BY: JLP	REVISED: 01/19/99 4:24	TDR: 0171435
CD0104		FILE: AAA00008377	MDL: -
		MTL: -	

BALDOR ELECTRIC Co.

3PH, DV, 12 LEADS, Y START/D RUN

CD0104