

BALDOR® • RELIANCE 

Product Information Packet

VJPFPM3312T

10//7.5HP,3490//2900RPM,3PH,60//50HZ,213

Part Detail							
Revision:	F	Status:	PRD/A	Change #:		Proprietary:	No
Type:	AC	Elec. Spec:	37WGR891	CD Diagram:	CD0005	Mfg Plant:	
Mech. Spec:	37N800	Layout:	37LYN800	Poles:	02	Created Date:	12-10-2015
Base:	N	Eff. Date:	08-22-2018	Leads:	9#14		

Specs			
Catalog Number:	VJPFPM3312T	Front Shaft Indicator:	None
Enclosure:	OPSB	Heater Indicator:	No Heater
Frame:	213JP	Insulation Class:	F
Frame Material:	Steel	Inverter Code:	Not Inverter
Output @ Frequency:	10.000 HP @ 60 HZ	KVA Code:	H
	7.500 HP @ 50 HZ	Lifting Lugs:	Vertical Lifting Lugs
Synchronous Speed @ Frequency:	3000 RPM @ 50 HZ	Locked Bearing Indicator:	Locked Bearing
Voltage @ Frequency:	460.0 V @ 60 HZ	Motor Lead Quantity/Wire Size:	9 @ 14 AWG
	380.0 V @ 50 HZ	Motor Lead Exit:	Ko Box
	230.0 V @ 60 HZ	Motor Lead Termination:	Flying Leads
	190.0 V @ 50 HZ	Motor Type:	3728M
XP Class and Group:	None	Mounting Arrangement:	F1
XP Division:	Not Applicable	Power Factor:	86
Agency Approvals:	CSA EEV	Product Family:	General Purpose
	UL	Pulley End Bearing Type:	Ball
Auxillary Box:	No Auxillary Box	Pulley Face Code:	C-Face
Auxillary Box Lead Termination:	None	Pulley Shaft Indicator:	Tapped & Key
Base Indicator:	No Mounting	Rodent Screen:	None

Bearing Grease Type:	Polyrex EM (-20F +300F)	RoHS Status:	ROHS COMPLIANT
Blower:	None	Shaft Extension Location:	Pulley End
Current @ Voltage:	24.000 A @ 230.0 V	Shaft Ground Indicator:	No Shaft Grounding
	22.000 A @ 190.0 V	Shaft Rotation:	Reversible
	12.000 A @ 460.0 V	Shaft Slinger Indicator:	Shaft Slinger
	11.000 A @ 380.0 V	Speed Code:	Single Speed
Design Code:	B	Motor Standards:	NEMA
Drip Cover:	Drip Cover	Starting Method:	Direct on line
Duty Rating:	CONT	Thermal Device - Bearing:	None
Electrically Isolated Bearing:	Not Electrically Isolated	Thermal Device - Winding:	None
Feedback Device:	NO FEEDBACK	Vibration Sensor Indicator:	No Vibration Sensor
Front Face Code:	Drip Cover Mounting	Winding Thermal 1:	None
		Winding Thermal 2:	None

Nameplate NP3454L											
CAT.NO.	VJPFPM3312T			CUST P/N				I.P.	23		
SPEC.	37N800R891H1			SER.NO.				FRAME	213JP		
HZ	60	HP	10	RPM	3490	HZ	50	HP	7.5	RPM	2900
VOLTS	230/460			CODE	H			VOLTS	190/380		
AMPS	24/12			DES	B			AMPS	22/11		
EFF	88.5	SER.F.	1.15	PF	86	EFF	87.5	SER.F.	1.15	PF	85
RATING	40C AMB-CONT			DE BRG	6309			GREASE	POLYREX EM		
BLANK				ODE BRG	6206			MTR. WT.	121		
				CLASS	F			PH	3		
				ENCL	OPSB			CC	010A		
HTR-VOLTS		HTR-AMPS		HTR-WATTS							

Parts List		
Part Number	Description	Quantity
SA312103	SA 37N800R891H1	1.000 EA
RA299542	RA 37N800R891H1	1.000 EA
37CB3006	37 CB CASTING W/1.38 LEAD HOLE @ 6:00	1.000 EA
51XW2520A10	.25-20 X .62, TAPTITE II, HEX WSHR SLTD	2.000 EA
11XW1032G06	10-32 X .38, TAPTITE II, HEX WSHR SLTD U	1.000 EA
37EP3203D02	D00 W/AXIAL FAN MTG	1.000 EA
HW4500A01	1641B(ALEMITE)400 UNIV, GREASE FITT	1.000 EA
HW4500A17	317400 ALEMITE GREASE RELIEF	1.000 EA
HW5100A06	W2420-025 WVY WSHR (WB)	1.000 EA
37EP3401A18	PUEP OPEN 309 BRG W/BAFFLE, GRS, REL, MF	1.000 EA
HW4500A01	1641B(ALEMITE)400 UNIV, GREASE FITT	1.000 EA
HW4500A17	317400 ALEMITE GREASE RELIEF	1.000 EA
10XN2520A36	1/4-20X 2 1/4 HEX HD X	4.000 EA
HW1001A25	LOCKWASHER 1/4, ZINC PLT .493 OD, .255 I	4.000 EA
37AD2000A02	BAFFLE PLATE, STAMPED PLATED	1.000 EA
60XW0632A06	6-32 X 3/8 TORX HEAD SCREW TAPTITE II	4.000 EA
XY3118A12	5/16-18 HEX NUT DIRECTIONAL SERRATION	4.000 EA
39FH4500A09	39 FRAME DRIP COVER FOR 36 FRAME OPSB MO	1.000 EA
HA1040A03	UNICORP #1725M09F162520 SPACER FOR FAN C	3.000 EA
10XN2520A08	1/4-20X1/2 HEX HEAD CAP	3.000 EA
37CB4516	LIPPED LID FOR 37 FRAME NEC KOBX	1.000 EA
51XW0832A07	8-32 X .44, TAPTITE II, HEX WSHR SLTD SE	4.000 EA
HW4600B67	V-RING SLINGER 1.770 X 2.170 X .28 VITON	1.000 EA
HW2501E21	KEY, 1/4 SQ X 2.375	1.000 EA

Parts List (continued)		
Part Number	Description	Quantity
HA7000A02	KEY RETAINER RING, 1 1/8 DIA, 1 3/8 DIA	1.000 EA
85XU0407S04	4X1/4 U DRIVE PIN STAINLESS	4.000 EA
LB1182	WARNING LABEL FOR MOTORS WITH EYENUTS	1.000 EA
MJ1000A02	GREASE, POLYREX EM EXXON (USe 4824-15A)	0.050 LB
MG1025R44	WILKOFASST, 784.109, CARMINE RED #3002	0.028 GA
37AD2001D01	BAFFLE PLATE, PLASTIC 2.12" WIDTH	1.000 EA
HA3104A35	THRUBOLT .31-18 X 13.687	4.000 EA
LC0005E01	CONN.DIA./WARNING LABEL (LC0005/LB1119N)	1.000 EA
NP3454L	ALUM FIRE PUMP MOTOR(LEGACY/BALDOR ONLY)	1.000 EA
07PA1007	PKG GRP, PRINT PK1156A06	1.000 EA
PK3082	STYROFOAM CRADLE	1.000 EA
PK3085X	FOAM SHAFT SUPPORT PRECUT 4-1/4 X 6-3/4	1.000 EA
MN416A01	TAG-INSTAL-MAINT no wire (1200/bx) 5/18	1.000 EA

AC Induction Motor Performance Data

Record # 54378 - Typical performance - not guaranteed values

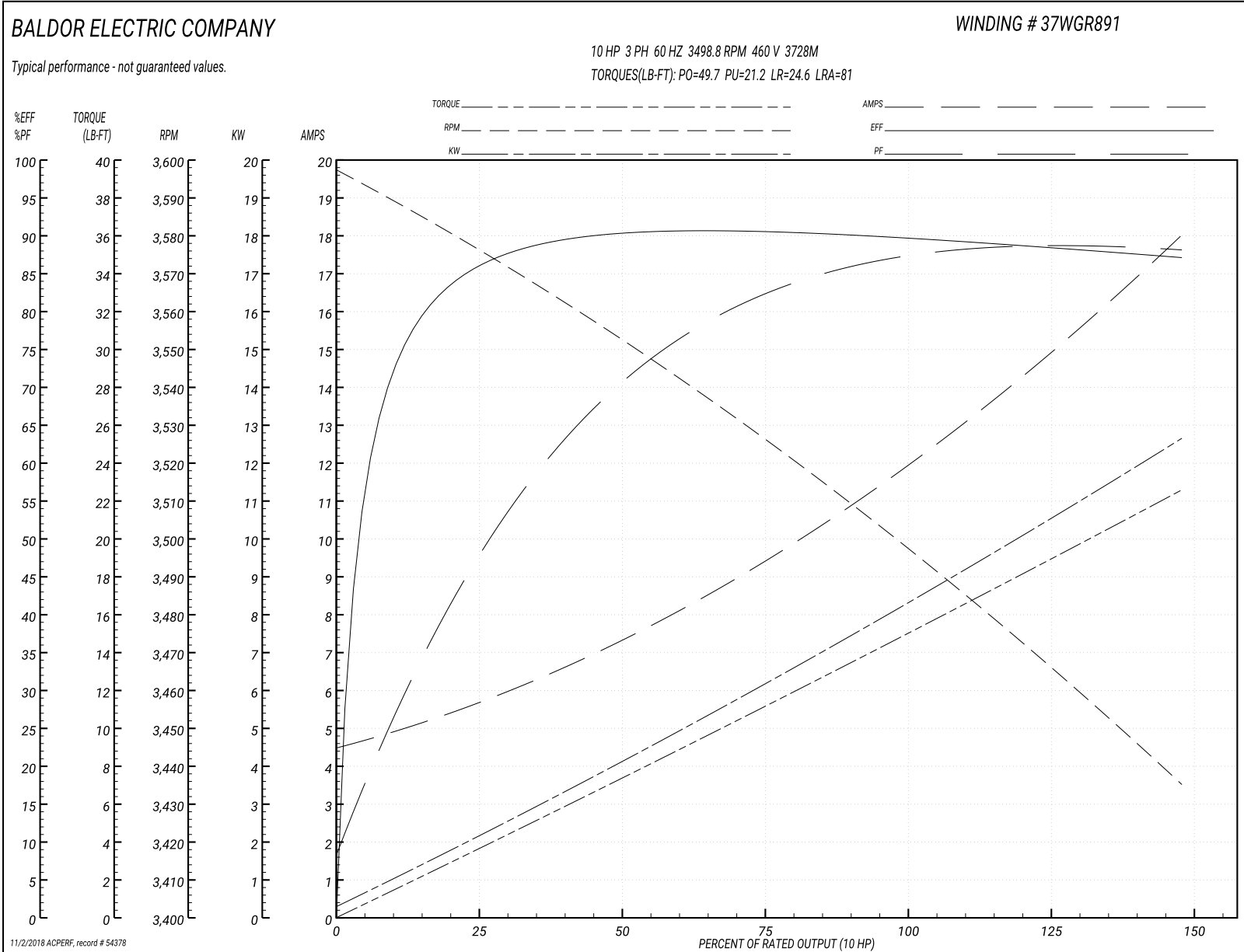
Winding: 37WGR891-R001	Type: 3728M	Enclosure: OPSB
-------------------------------	--------------------	------------------------

Nameplate Data				460 V, 60 Hz: High Voltage Connection	
Rated Output (HP)	10//7.5			Full Load Torque	14.9 LB-FT
Volts	230/460//190/380			Start Configuration	direct on line
Full Load Amps	24/12//22/11			Breakdown Torque	49.7 LB-FT
R.P.M.	3490//2900			Pull-up Torque	21.2 LB-FT
Hz	60//50	Phase	3	Locked-rotor Torque	24.6 LB-FT
NEMA Design Code	B	KVA Code	H	Starting Current	81 A
Service Factor (S.F.)	1.15			No-load Current	4.66 A
NEMA Nom. Eff.	88.5	Power Factor	86	Line-line Res. @ 25°C	1.2451 Ω
Rating - Duty	40C AMB-CONT			Temp. Rise @ Rated Load	36°C
S.F. Amps				Temp. Rise @ S.F. Load	45°C
				Locked-rotor Power Factor	38.6

Load Characteristics 460 V, 60 Hz, 10 HP

% of Rated Load	25	50	75	100	125	150	S.F.
Power Factor	50	72	81	86	88	89	87
Efficiency	85.4	90	90.5	89.9	88.7	87.2	89.2
Speed	3576	3552.4	3527.2	3498.8	3467	3435.1	3480
Line amperes	5.45	7.17	9.45	12	14.9	17.9	13.7

Performance Graph at 460V, 60Hz, 10.0HP Typical performance - Not guaranteed values



AC Induction Motor Performance Data

Record # 54379 - Typical performance - not guaranteed values

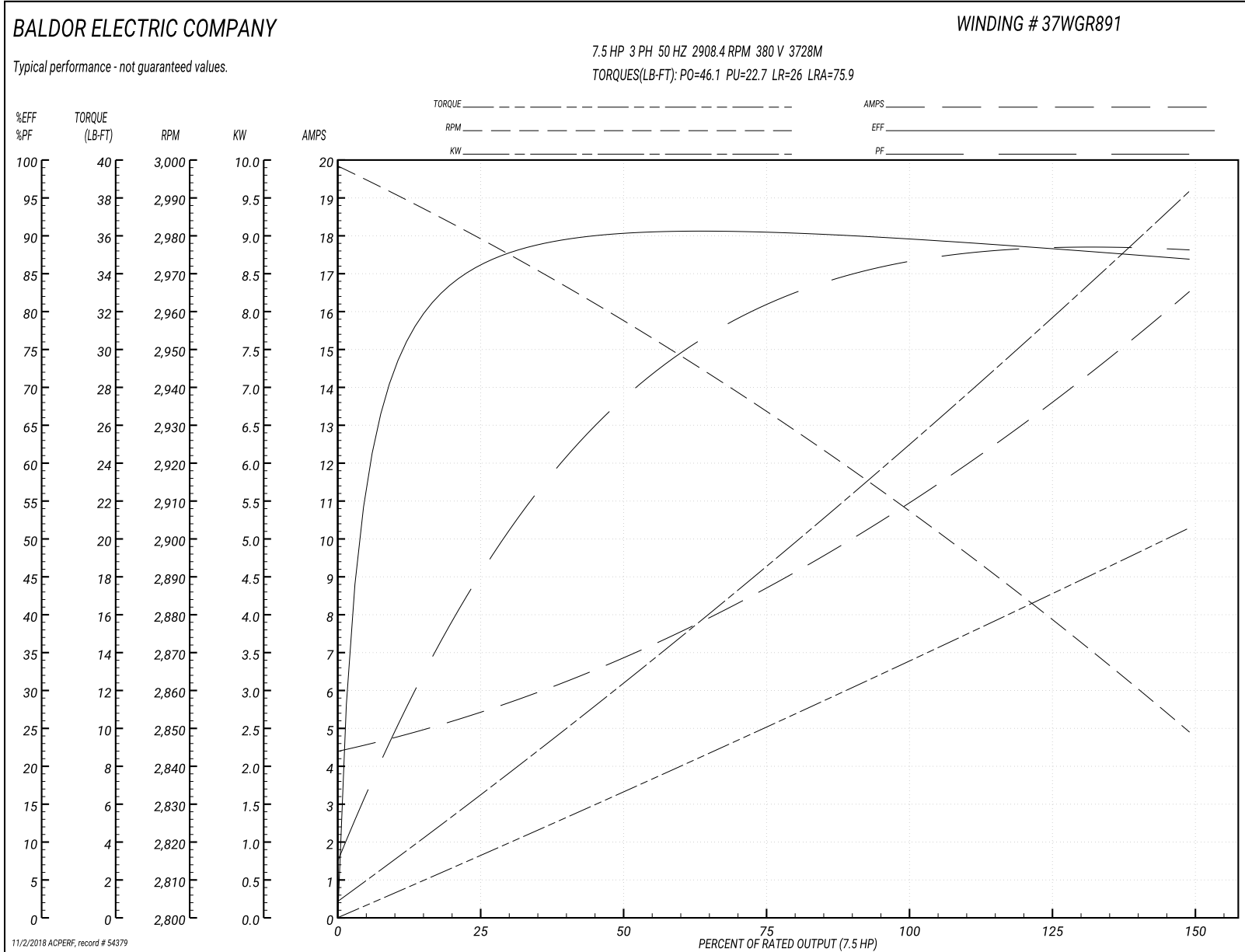
Winding: 37WGR891-R001	Type: 3728M	Enclosure: OPSB
-------------------------------	--------------------	------------------------

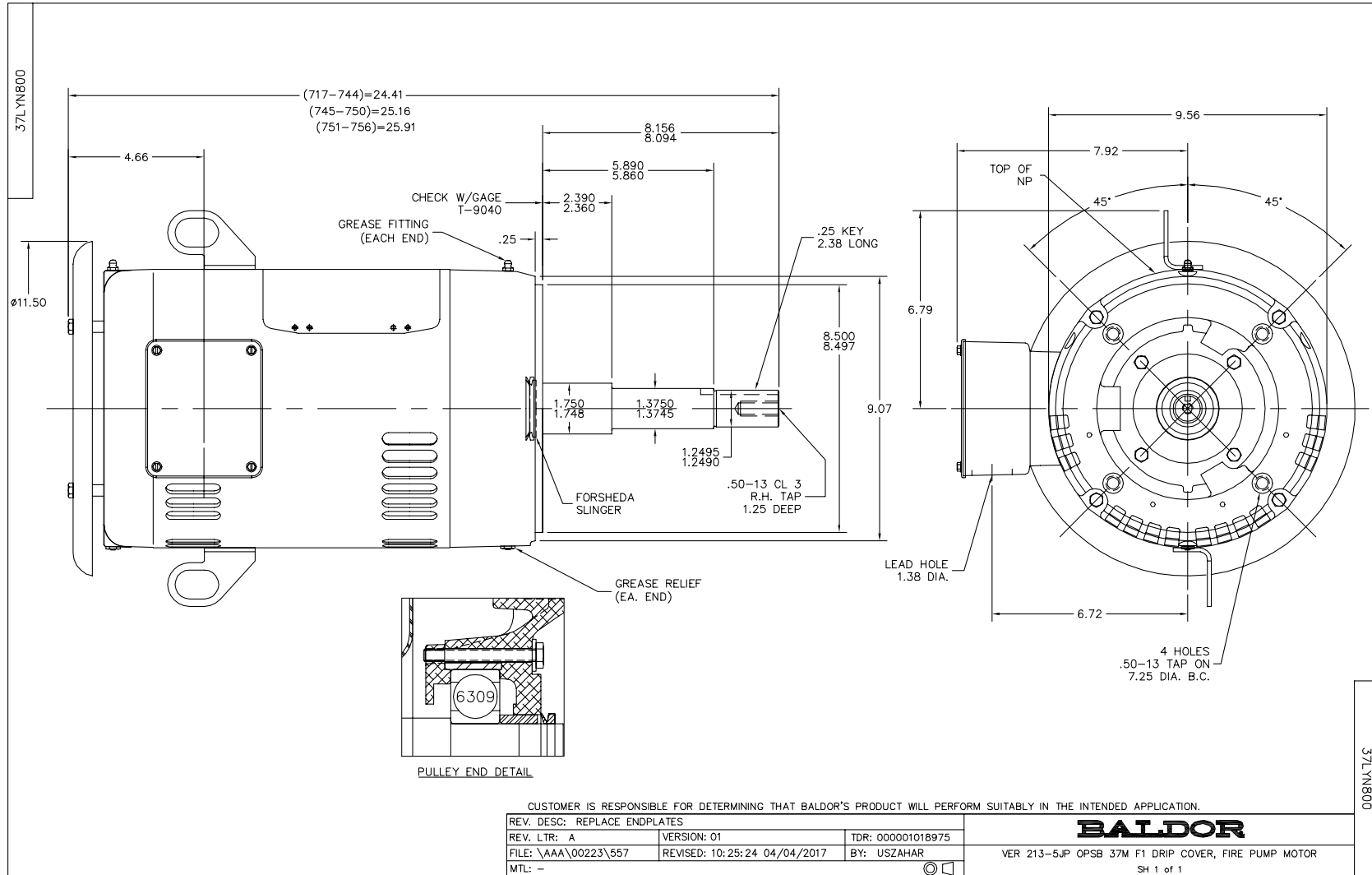
Nameplate Data				380 V, 50 Hz: High Voltage Connection	
Rated Output (HP)	10//7.5			Full Load Torque	13.5 LB-FT
Volts	230/460//190/380			Start Configuration	direct on line
Full Load Amps	24/12//22/11			Breakdown Torque	46.1 LB-FT
R.P.M.	3490//2900			Pull-up Torque	22.7 LB-FT
Hz	60//50	Phase	3	Locked-rotor Torque	26 LB-FT
NEMA Design Code	B	KVA Code	H	Starting Current	75.9 A
Service Factor (S.F.)	1.15			No-load Current	4.57 A
NEMA Nom. Eff.	88.5	Power Factor	86	Line-line Res. @ 25°C	1.2451 Ω
Rating - Duty	40C AMB-CONT			Temp. Rise @ Rated Load	33°C
S.F. Amps				Temp. Rise @ S.F. Load	41°C

Load Characteristics 380 V, 50 Hz, 7.5 HP

% of Rated Load	25	50	75	100	125	150	S.F.
Power Factor	48	70	81	85	88	89	87
Efficiency	85.8	90	90.5	89.8	88.5	86.9	89
Speed	2978.5	2956.8	2933.7	2908.4	2878.8	2848.7	2891
Line amperes	5.22	6.77	8.73	11.1	13.7	16.4	12.7

Performance Graph at 380V, 50Hz, 7.5HP Typical performance - Not guaranteed values





CD0005



LOW VOLTAGE
(2Y)



LINE

HIGH VOLTAGE
(1Y)



LINE

NOTES:

1. INTERCHANGE ANY TWO LINE LEADS TO REVERSE ROTATION.
2. OPTIONAL THERMOSTATS ARE PROVIDED WHEN SPECIFIED.
3. ACTUAL NUMBER OF INTERNAL PARALLEL CIRCUITS MAY BE A MULTIPLE OF THOSE SHOWN ABOVE.
4. LEAD COLORS ARE OPTIONAL. LEADS MUST ALWAYS BE NUMBERED AS SHOWN.

REV. DESC: REVISE TO SHOW OPTIONAL COLORS			
REV. LTR: E	BY: JLP	REVISED: 01/19/99 10:15	TDR: 0171435
900000		FILE: AAA00005140	MDL: -
		MTL: -	

BALDOR ELECTRIC Co.

3PH, DV, 9 LEADS

CD0005