

BALDOR® • RELIANCE 

Product Information Packet

VLECP3771T

10HP,3500RPM,3PH,60HZ,215LP,0742M,TEFC,F

Part Detail							
Revision:	F	Status:	PRD/A	Change #:		Proprietary:	No
Type:	AC	Elec. Spec:	07WGY012	CD Diagram:	CD0005	Mfg Plant:	
Mech. Spec:	07H347	Layout:	07LYH347	Poles:	02	Created Date:	07-09-2015
Base:	N	Eff. Date:	06-26-2017	Leads:	9#14		

Specs			
Catalog Number:	VLECP3771T	Heater Indicator:	No Heater
Enclosure:	TEFC	Insulation Class:	F
Frame:	215LP	Inverter Code:	Inverter Duty
Frame Material:	Iron	KVA Code:	H
Output @ Frequency:	10.000 HP @ 60 HZ	Lifting Lugs:	Vertical Lifting Lugs
Synchronous Speed @ Frequency:	3600 RPM @ 60 HZ	Locked Bearing Indicator:	Locked Bearing
Voltage @ Frequency:	460.0 V @ 60 HZ	Motor Lead Quantity/Wire Size:	9 @ 14 AWG
	230.0 V @ 60 HZ	Motor Lead Exit:	Ko Box
XP Class and Group:	CLI GP A,B,C,D	Motor Lead Termination:	Flying Leads
XP Division:	Division II	Motor Type:	0742M
Agency Approvals:	UR	Mounting Arrangement:	F1
	CSA EEV	Power Factor:	90
	CCSA US	Product Family:	Super-E Chemical Processing
Auxillary Box:	No Auxillary Box	Pulley End Bearing Type:	Thrust
Auxillary Box Lead Termination:	None	Pulley Face Code:	P-Base
Base Indicator:	No Mounting	Pulley Shaft Indicator:	P-Base Groove & Key
Bearing Grease Type:	Polyrex EM (-20F +300F)	Rodent Screen:	None
Blower:	None	Shaft Extension Location:	Pulley End

Constant Torque Speed Range:	6	Shaft Ground Indicator:	No Shaft Grounding
Current @ Voltage:	11.000 A @ 460.0 V	Shaft Rotation:	Reversible
	22.000 A @ 230.0 V	Shaft Slinger Indicator:	No Slinger
	24.500 A @ 208.0 V	Speed Code:	Single Speed
Design Code:	B	Motor Standards:	NEMA
Drip Cover:	Drip Cover	Starting Method:	Direct on line
Duty Rating:	CONT	Thermal Device - Bearing:	NONE (OLD)
Electrically Isolated Bearing:	Not Electrically Isolated	Thermal Device - Winding:	None
Feedback Device:	NO FEEDBACK	Vibration Sensor Indicator:	No Vibration Sensor
Front Face Code:	Drip Cover Mounting	Winding Thermal 1:	None
Front Shaft Indicator:	None	Winding Thermal 2:	None
		XP Temp Code:	T3C

Nameplate NP3258E										
CAT.NO.	VLECP3771T									
SPEC.	07H347Y012G1									
HP	10	TE								
VOLTS	230/460									
AMP	22/11									
RPM	3500									
FRAME	215LP				HZ	60		PH	3	
SER.F.	1.15			CODE	H		DES	B		
RATING	40C AMB-CONT									
SN										
DE	QJ211				ODE	6307				
NEMA-NOM-EFF	92.4				PF	90				
G.MIN.EFF	91.0				CC	010A				
T. CODE	T3C				T=	160				
								CL	F	

Nameplate NP3261E	
SPEC.	07H347Y012G1
D.E. BRG.	55BZ02X00X
O.D.E. BRG.	35BC03X30X
GREASE	POLYREX EM
RPM MAX	5400
	MAX. KVAR
BLANK	
INV. TYPE	PWM
T=	160
C HP FR	60
CT HZ FROM	6
VT HZ FROM	3
HTR-VOLTS	N/A
HTR-WATTS	N/A
C HP TO	90
CT HZ TO	60
VT HZ TO	60
HTR-AMPS	N/A
MAX. SPACE HEATER TEMP.	N/A

Parts List		
Part Number	Description	Quantity
SA303670	SA 07H347Y012G1	1.000 EA
RA290805	RA 07H347Y012G1	1.000 EA
36FN3000C02SP	EXFN, PLASTIC, 5.25 OD, 1.175 ID	1.000 EA
HA6481	S.S. LIFTING EYE BRACKET FOR 306 & 307 F	2.000 EA
10XN3816S16	3/8-16 X 1 HEX HD CAP SCREW, STAINLE	4.000 EA
HW1001S38	WASHER, 3/8 SPLT LK, STAINLESS STEEL	4.000 EA
10XN2520S06	1/4 20X3/8 HX HD CAP S.S.	2.000 EA
HW1001S25	WASHER, 1/4 SPLT LK, STAINLESS STEEL	2.000 EA
HA3104S13	THRUBOLT- .31-18X11.75 SSTDR#59495	4.000 EA
WD1000B16	T&B CX70TN TERMINAL	1.000 EA
09CB1002A08G	CB 309 W/1.50 NPT LEAD HOLE (GRAY EPOXY)	1.000 EA
RM1017	LEAD SEPERATOR GASKET MODEL 307 1/8" THK	1.000 EA
19XW2520A16	SCREW,1/4-20X1 TAPTITE-II OR ROLOC 91	4.000 EA
10XN2520S06	1/4 20X3/8 HX HD CAP S.S.	1.000 EA
HW1001S25	WASHER, 1/4 SPLT LK, STAINLESS STEEL	1.000 EA
WD1000B16	T&B CX70TN TERMINAL	1.000 EA
37EP1101A48G	FR EP, MACH, 307 BRG FOR CI FAN COVER W/	1.000 EA
HW4500A31	GREASE FIT/EXT 3014-B .25-28 ALEMITE	1.000 EA
HW4500A17	317400 ALEMITE GREASE RELIEF	1.000 EA
HW5100A08	W3118-035 WVY WSHR (WB)	1.000 EA
37EP1504A02G	SPL PU E.P. MACH, W/GRAY EPOXY QJ211 BRG	1.000 EA
HW4500A01	1641B(ALEMITE)400 UNIV, GREASE FITT	1.000 EA
HW4500A17	317400 ALEMITE GREASE RELIEF	1.000 EA
10XN2520S28	1/4-20X 1 3/4 HEX HD SS X	4.000 EA

Parts List (continued)		
Part Number	Description	Quantity
HW1001S25	WASHER, 1/4 SPLT LK, STAINLESS STEEL	4.000 EA
10XN2520S52	1/4-20X 3 1/4 HEX HD SS X	2.000 EA
HW1001S25	WASHER, 1/4 SPLT LK, STAINLESS STEEL	2.000 EA
51XB1214A20	12-14X1.25 HXWSSLD SERTYB	1.000 EA
07FH1001A06G	307 FH FOR MTG TO FR E.P. W/GREASER & DR	1.000 EA
10XN2520S28	1/4-20X 1 3/4 HEX HD SS X	3.000 EA
HW1001S25	WASHER, 1/4 SPLT LK, STAINLESS STEEL	3.000 EA
40FH2500A04G	P/L DRIP COVER MODEL 40- OPEN MACH, GRA	1.000 EA
HA2086A03	.375 X 1.0 HVY-FT SPACER SPIRAL # 62434	4.000 EA
10XN3816S32	3/8-16 X 2 HEX HD CAP SCREW, STAINLE	4.000 EA
HW1001S38	WASHER, 3/8 SPLT LK, STAINLESS STEEL	4.000 EA
HW4600B33	V-RING SLINGER 1.375 X 1.890 X .35 VITON	1.000 EA
HW4600B40	V-RING SLINGER 2.000 X 2.680 X .28 VITON	1.000 EA
12CB1503G	CONDUIT BOX CAST. (GRAY)	1.000 EA
12GS1002	GASKET, CONDUIT BOX LID, NEOP	1.000 EA
10XN2520S12	BOLT 1/4 - 20X 3/4 HEX HEAD SS (F/S)	2.000 EA
HW1001S25	WASHER, 1/4 SPLT LK, STAINLESS STEEL	2.000 EA
MJ5001A27	32220KN GRAY SEALER *MIN BUY 4 QTS=1GAL	0.001 QT
MJ5001A14	DYNAPRO SEALANT, CP MTR VC#2508050 (603	0.001 EA
85XU0407S04	4X1/4 U DRIVE PIN STAINLESS	4.000 EA
LB1115N	LABEL,LIFTING DEVICE (ON ROLLS)	1.000 EA
LB1002N	LABEL,MARINE DUTY (ON ROLLS)	1.000 EA
MJ1000A02	GREASE, POLYREX EM EXXON (USe 4824-15A)	0.050 LB
MG1025N19	WILKOFAS, 778.50, RELIANCE BLUE-GREEN	0.036 GA

Product Information Packet: VLECP3771T - 10HP,3500RPM,3PH,60HZ,215LP,0742M,TEFC,F

LC0005E01	CONN.DIA./WARNING LABEL (LC0005/LB1119N)	1.000 EA
LB1449	DIV-2/NEC WARNING LABEL	1.000 EA
NP3258E	SS CP SUPER-E DIV-2 UL CSA-C US EEV CC	1.000 EA
NP3261E	SS CP SUPER-E AUX DATA INFORMATION	1.000 EA
07PA1011	PKG GRP, 07 CAST IRON PK1181	1.000 EA
07PA1095	PKG GRP, VER 07 CAST IRON	1.000 EA
PK6503	STRUCTURAL WOOD PSC 1X6X8	4.000 EA
MN416A01	TAG-INSTAL-MAINT no wire (1200/bx) 5/18	1.000 EA

AC Induction Motor Performance Data

Record # 47063 - Typical performance - not guaranteed values

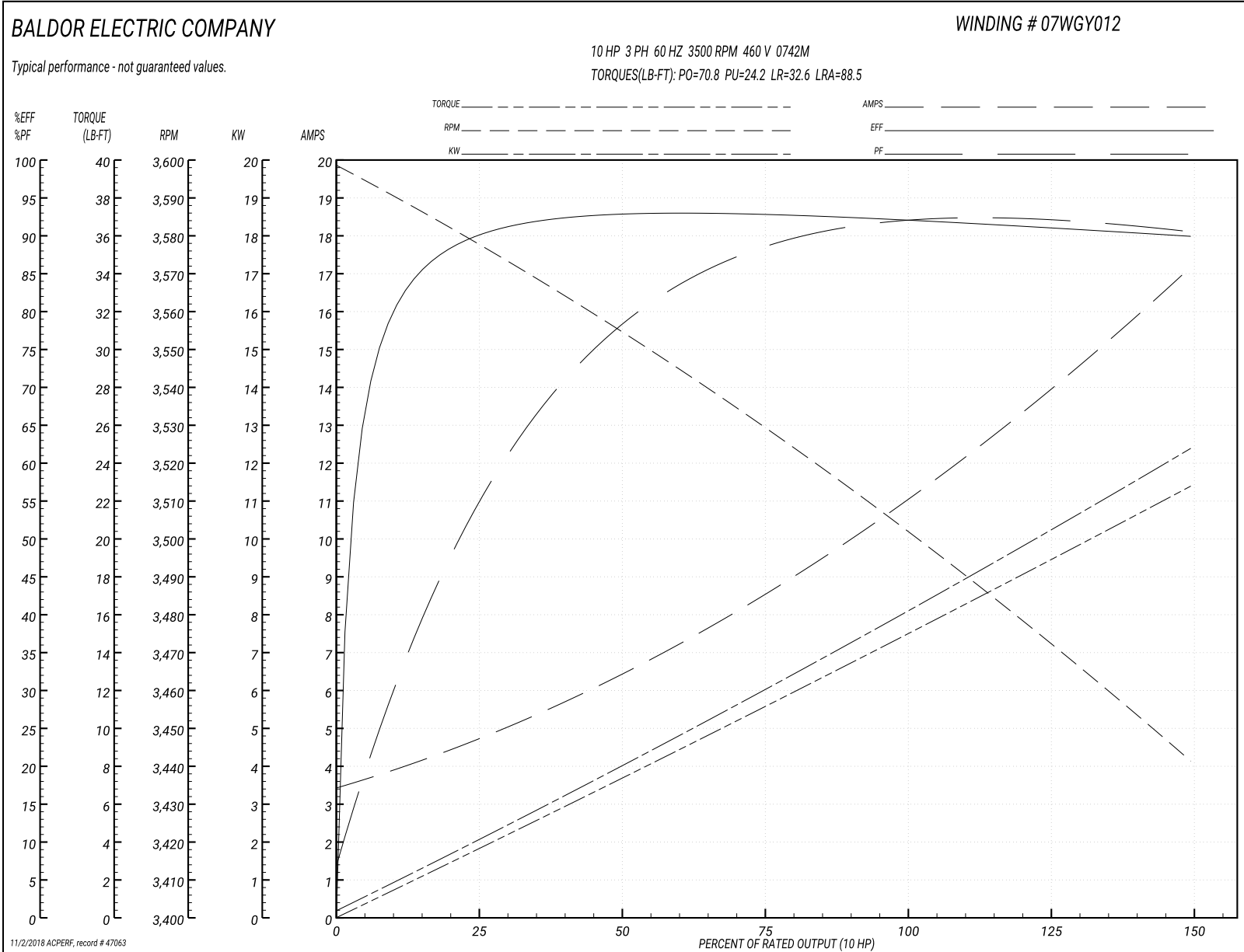
Winding: 07WGY012-R046	Type: 0742M	Enclosure: TEFC
-------------------------------	--------------------	------------------------

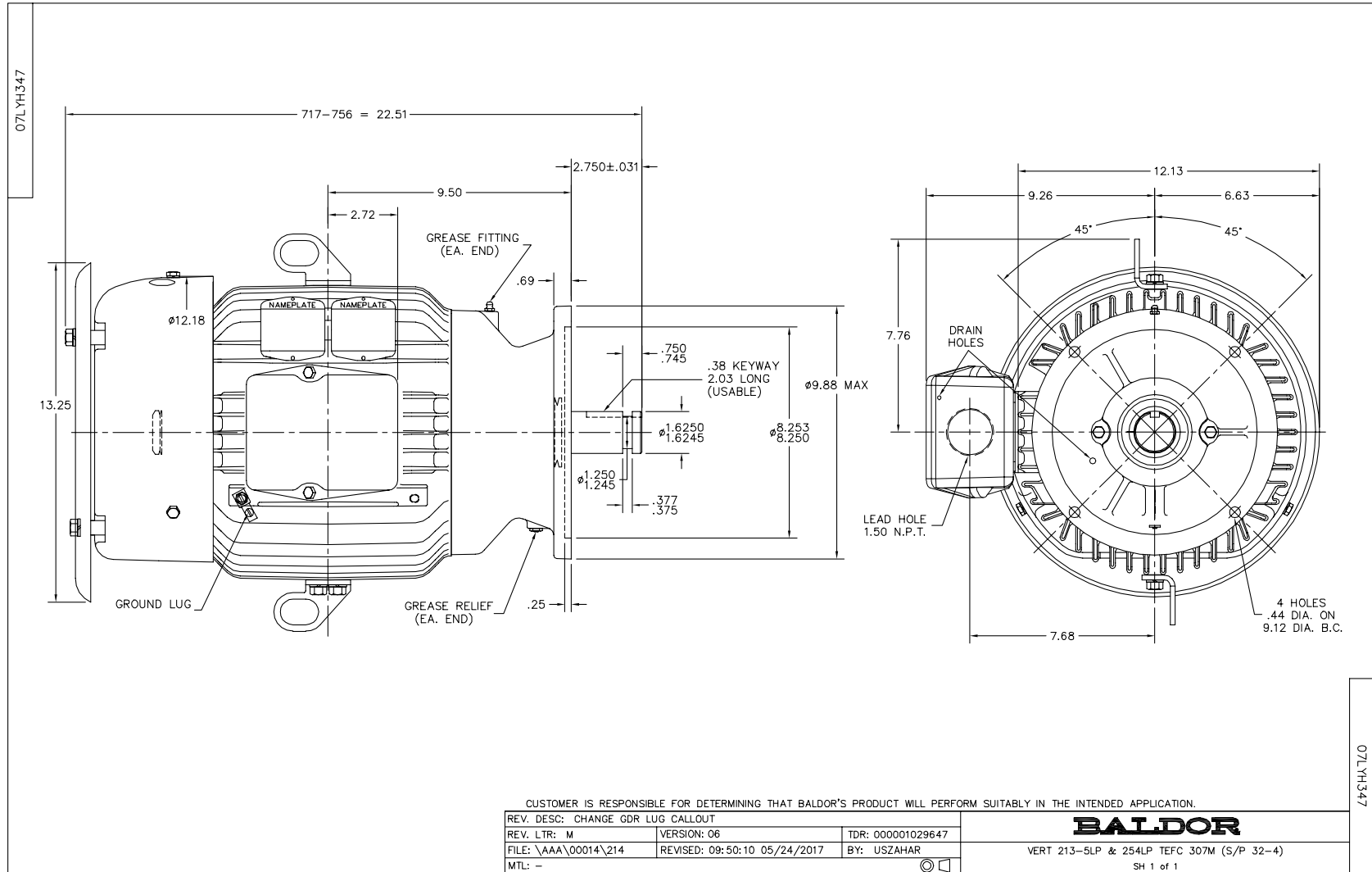
Nameplate Data				460 V, 60 Hz: High Voltage Connection	
Rated Output (HP)	10			Full Load Torque	14.9 LB-FT
Volts	230/460			Start Configuration	direct on line
Full Load Amps	22/11			Breakdown Torque	70.8 LB-FT
R.P.M.	3500			Pull-up Torque	24.2 LB-FT
Hz	60	Phase	3	Locked-rotor Torque	32.6 LB-FT
NEMA Design Code	B	KVA Code	H	Starting Current	88.5 A
Service Factor (S.F.)	1.15			No-load Current	3.61 A
NEMA Nom. Eff.	92.4	Power Factor	90	Line-line Res. @ 25°C	0.776 Ω
Rating - Duty	40C AMB-CONT			Temp. Rise @ Rated Load	40°C
S.F. Amps				Temp. Rise @ S.F. Load	51°C
				Rotor inertia	0.383 LB-FT ²

Load Characteristics 460 V, 60 Hz, 10 HP

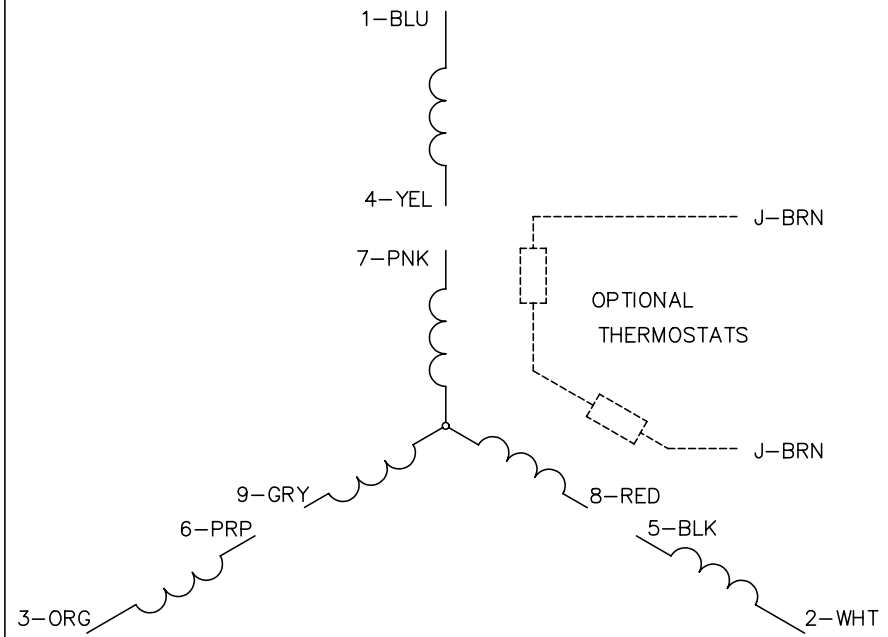
% of Rated Load	25	50	75	100	125	150	S.F.
Power Factor	58	79	88	90	92	91	91
Efficiency	90.1	93	93.2	92.5	91.4	90	91.8
Speed	3578.4	3554.5	3528.7	3503.4	3473.7	3440.8	3486
Line amperes	4.43	6.32	8.64	11.1	13.9	17.1	12.8

Performance Graph at 460V, 60Hz, 10.0HP Typical performance - Not guaranteed values

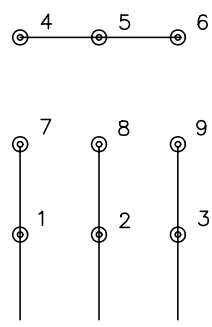




CD0005

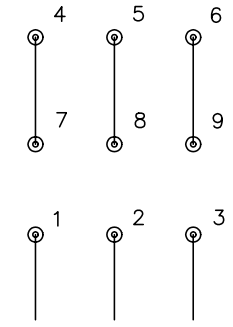


LOW VOLTAGE (2Y)



LINE

HIGH VOLTAGE (1Y)



LINE

NOTES:

1. INTERCHANGE ANY TWO LINE LEADS TO REVERSE ROTATION.
2. OPTIONAL THERMOSTATS ARE PROVIDED WHEN SPECIFIED.
3. ACTUAL NUMBER OF INTERNAL PARALLEL CIRCUITS MAY BE A MULTIPLE OF THOSE SHOWN ABOVE.
4. LEAD COLORS ARE OPTIONAL. LEADS MUST ALWAYS BE NUMBERED AS SHOWN.

REV. DESC: REVISE TO SHOW OPTIONAL COLORS			
REV. LTR: E	BY: JLP	REVISED: 01/19/99 10:15	TDR: 0171435
900000		FILE: AAA00005140	MDL: -
		MTL: -	

BALDOR ELECTRIC Co.

3PH, DV, 9 LEADS

CD0005