

BALDOR® • RELIANCE 

Product Information Packet

WCL1511T

10HP,3450RPM,1PH,60HZ,215TCZ,3740L,OPEN

| Part Detail | | | | | | | |
|-------------|--------|-------------|------------|-------------|--------------------|---------------|----|
| Revision: | AK | Status: | PRD/A | Change #: | | Proprietary: | No |
| Type: | AC | Elec. Spec: | 37WG047 | CD Diagram: | CD0017A01 | Mfg Plant: | |
| Mech. Spec: | 37E284 | Layout: | 37LYE284 | Poles: | 02 | Created Date: | |
| Base: | RG | Eff. Date: | 03-01-2017 | Leads: | 2#8 A PH,2#14 B PH | | |

| Specs | | | |
|---------------------------------|-------------------------|--------------------------------|--------------------|
| Catalog Number: | WCL1511T | Inverter Code: | Not Inverter |
| Enclosure: | OPEN | KVA Code: | G |
| Frame: | 215TCZ | Lifting Lugs: | No Lifting Lugs |
| Frame Material: | Steel | Locked Bearing Indicator: | Locked Bearing |
| Output @ Frequency: | 10.000 HP @ 60 HZ | Motor Lead Quantity/Wire Size: | 2 @ 8 AWG, A PH |
| Synchronous Speed @ Frequency: | 3600 RPM @ 60 HZ | Motor Lead Exit: | Ko Box |
| Voltage @ Frequency: | 230.0 V @ 60 HZ | Motor Lead Termination: | Flying Leads |
| XP Class and Group: | None | Motor Type: | 3740L |
| XP Division: | Not Applicable | Mounting Arrangement: | F1 |
| Agency Approvals: | CSA | Power Factor: | 86 |
| | UR | Product Family: | General Purpose |
| Auxillary Box: | No Auxillary Box | Pulley End Bearing Type: | Ball |
| Auxillary Box Lead Termination: | None | Pulley Face Code: | C-Face |
| Base Indicator: | Rigid | Pulley Shaft Indicator: | Tapped & Key |
| Bearing Grease Type: | Polyrex EM (-20F +300F) | Rodent Screen: | Included |
| Blower: | None | Shaft Extension Location: | Pulley End |
| Current @ Voltage: | 46.000 A @ 230.0 V | Shaft Ground Indicator: | No Shaft Grounding |
| | 48.000 A @ 208.0 V | Shaft Rotation: | Reversible |

| | | | |
|---------------------------------------|---------------------------|------------------------------------|---------------------|
| Design Code: | L | Shaft Slinger Indicator: | No Slinger |
| Drip Cover: | No Drip Cover | Speed Code: | Single Speed |
| Duty Rating: | CONT | Motor Standards: | NEMA |
| Electrically Isolated Bearing: | Not Electrically Isolated | Starting Method: | Direct on line |
| Feedback Device: | NO FEEDBACK | Thermal Device - Bearing: | NONE (OLD) |
| Front Face Code: | Standard | Thermal Device - Winding: | None |
| Front Shaft Indicator: | None | Vibration Sensor Indicator: | No Vibration Sensor |
| Heater Indicator: | No Heater | Winding Thermal 1: | None |
| Insulation Class: | F | Winding Thermal 2: | None |

| Nameplate NP1256L | | | | | | | | | | |
|-------------------|--------------|--|------|----|-----|------|--|----------------|----|---|
| CAT.NO. | WCL1511T | | | | | | | | | |
| SPEC. | 37E284X47 | | | | | | | | | |
| HP | 10 | | | | | | | | | |
| VOLTS | 230 | | | | | | | | | |
| AMP | 46 | | | | | | | | | |
| RPM | 3450 | | | | | | | | | |
| FRAME | 215TCZ | | | | HZ | 60 | | | PH | 1 |
| SER.F. | 1.15 | | CODE | G | DES | L | | CLASS | F | |
| NEMA-NOM-EFF | 83 | | PF | 86 | | | | | | |
| RATING | 40C AMB-CONT | | | | | | | | | |
| CC | | | | | | | | USABLE AT 208V | 48 | |
| DE | 6309 | | | | ODE | 6206 | | | | |
| ENCL | OPEN | | SN | | | | | | | |

| Parts List | | |
|-------------|--|----------|
| Part Number | Description | Quantity |
| SA030735 | SA 37E284X47 | 1.000 EA |
| RA026774 | RA 37E284X47 | 1.000 EA |
| 37CB3004 | 37 CB CASTING W/1.09 LEAD HOLE @ 6:00 | 1.000 EA |
| 51XW2520A12 | .25-20 X .75, TAPTITE II, HEX WSHR SLTD | 2.000 EA |
| 11XW1032G06 | 10-32 X .38, TAPTITE II, HEX WSHR SLTD U | 1.000 EA |
| 37EP3203D00 | MASTER,ODE,206 BRG,GREASER,RELIEF | 1.000 EA |
| HW4500A01 | 1641B(ALEMITE)400 UNIV, GREASE FITT | 1.000 EA |
| HW4500A17 | 317400 ALEMITE GREASE RELIEF | 1.000 EA |
| HA1104A01 | RODENT SCREEN 37 FRAME 206 BRG FRONT END | 1.000 EA |
| 51XW1032A06 | 10-32 X .38, TAPTITE II, HEX WSHR SLTD S | 4.000 EA |
| HW1000A10 | #10 FLAT WASHER (SAE) | 4.000 EA |
| SP1008A01 | BAFFLE, MODEL 36 & 37 | 1.000 EA |
| 13XF0832A08 | 8-32 X.50 PAN HD,SLTD, TYPE F SCREW, ZIN | 2.000 EA |
| 10XN2520A12 | O1/4-20X 3/4 HEX HEAD CAP | 2.000 EA |
| HW5100A06 | W2420-025 WVY WSHR (WB) | 1.000 EA |
| 37EP3401A06 | PUEP OPEN 309 BRG W/BAFF, SLINGER, SCREE | 1.000 EA |
| HW4500A01 | 1641B(ALEMITE)400 UNIV, GREASE FITT | 1.000 EA |
| HW4500A17 | 317400 ALEMITE GREASE RELIEF | 1.000 EA |
| 37AD2000A02 | BAFFLE PLATE, STAMPED PLATED | 1.000 EA |
| 60XW0632A06 | 6-32 X 3/8 TORX HEAD SCREW TAPTITE II | 4.000 EA |
| HA1222 | RODENT SCREEN - 37 C-FACE MOTORS | 4.000 EA |
| 51XW1032A06 | 10-32 X .38, TAPTITE II, HEX WSHR SLTD S | 4.000 EA |
| HW1025A10 | #10 BALANCE WASHER (SPL) | 4.000 EA |
| 10XN2520A36 | 1/4-20X 2 1/4 HEX HD X | 4.000 EA |

| Parts List (continued) | | |
|------------------------|--|----------|
| Part Number | Description | Quantity |
| HW1001A25 | LOCKWASHER 1/4, ZINC PLT .493 OD, .255 I | 4.000 EA |
| XY3118A12 | 5/16-18 HEX NUT DIRECTIONAL SERRATION | 4.000 EA |
| 37CB4516 | LIPPED LID FOR 37 FRAME NEC KOBX | 1.000 EA |
| 51XW0832A07 | 8-32 X .44, TAPTITE II, HEX WSHR SLTD SE | 4.000 EA |
| HA2009A02 | SLINGER MODEL 37 PUMP MOTORS-2.75 DIA. A | 1.000 EA |
| 80XN1032A06 | 10-32 X 3/8 SET SC HEX SOCK | 1.000 EA |
| 85XU0407S04 | 4X1/4 U DRIVE PIN STAINLESS | 2.000 EA |
| MJ1000A02 | GREASE, POLYREX EM EXXON (USe 4824-15A) | 0.050 LB |
| MG1000G27 | MED CHARCOAL METALLIC GREY 400-0096 | 0.028 GA |
| 37CB5007A01 | CAPACITOR BOX KIT, 37CB3802, 3 EC1216C0 | 1.000 EA |
| SP5172A01 | 37 TYPE L TORQ STAT SWITCH LEAD ASSEMBLY | 1.000 EA |
| HA3104A17 | 5/16-18X13.250 T-BLT/OHIO | 4.000 EA |
| LB1119N | WARNING LABEL | 1.000 EA |
| LC0017 | CONN LABEL-1 PHASE-SINGLE VOLT-REV ROTNO | 1.000 EA |
| NP1256L | ALUM UL CSA CC INDUSTRIAL MOTOR A60 | 1.000 EA |
| G0PA1000 | PKG GRP, PRINT PK1026A06 | 1.000 EA |
| PK3085X | FOAM SHAFT SUPPORT PRECUT 4-1/4 X 6-3/4 | 1.000 EA |
| MN416A01 | TAG-INSTAL-MAINT no wire (1200/bx) 5/18 | 1.000 EA |
| FE-0000001 | ZRTG FE ASSEMBLY | 1.000 EA |

AC Induction Motor Performance Data

Record # 11971 - Typical performance - not guaranteed values

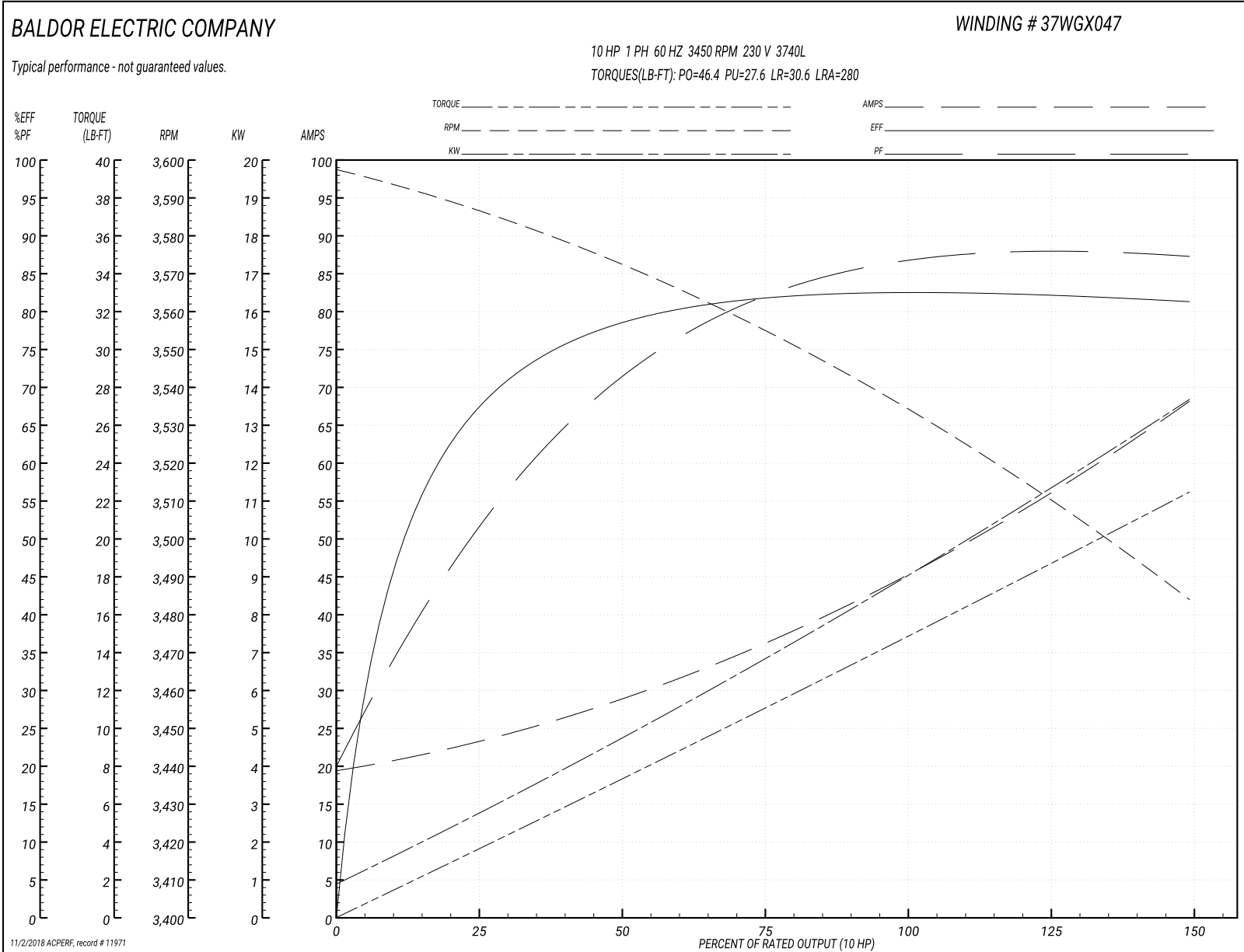
| | | |
|-------------------------------|--------------------|------------------------|
| Winding: 37WGX047-R001 | Type: 3740L | Enclosure: OPEN |
|-------------------------------|--------------------|------------------------|

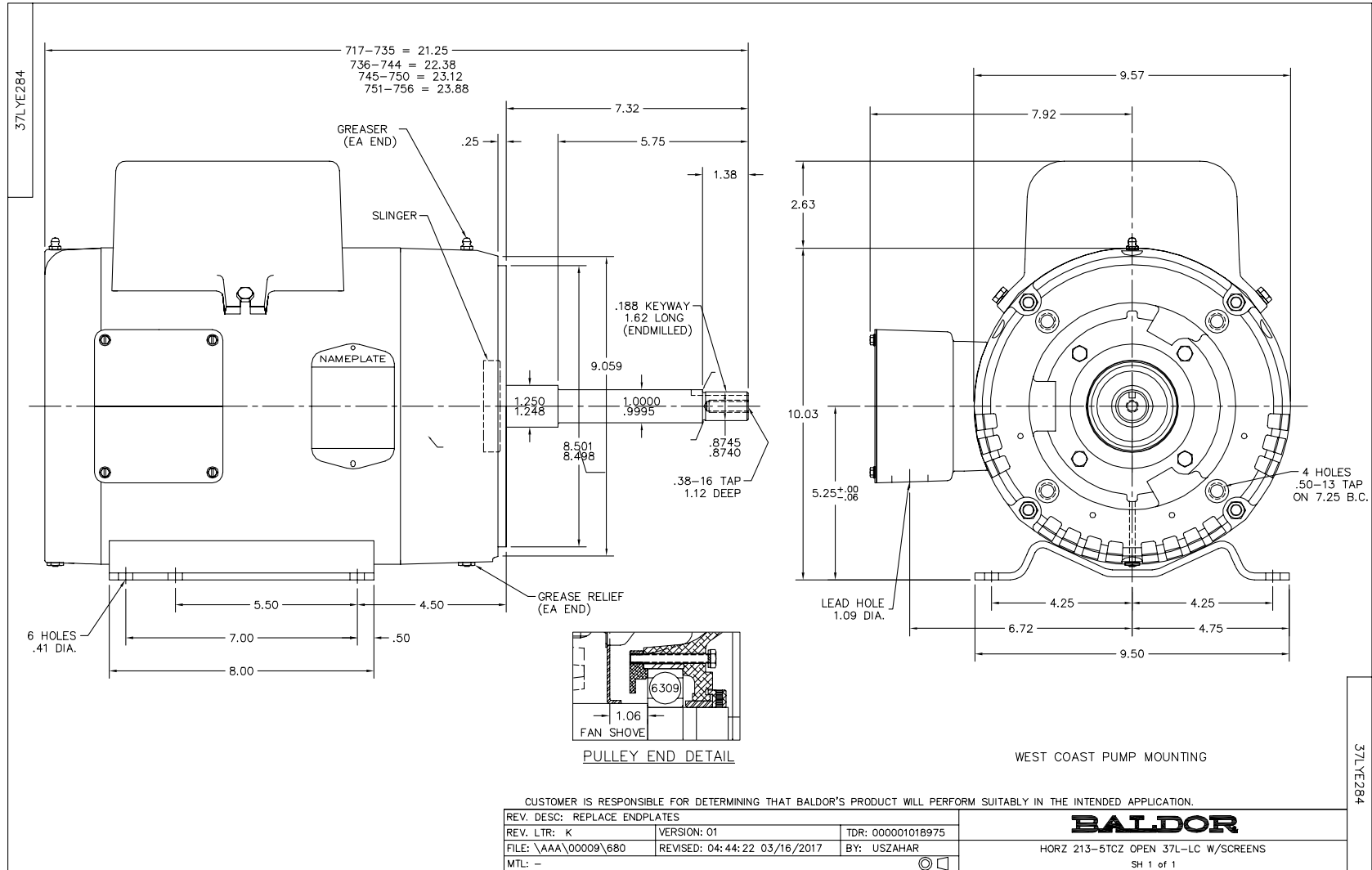
| Nameplate Data | | | | 230 V, 60 Hz: Single Voltage Motor | |
|-----------------------|--------------|--------------|----|---------------------------------------|------------------------------|
| Rated Output (HP) | 10 | | | Full Load Torque | 15 LB-FT |
| Volts | 230 | | | Start Configuration | direct on line |
| Full Load Amps | 46 | | | Breakdown Torque | 46.4 LB-FT |
| R.P.M. | 3450 | | | Pull-up Torque | 27.6 LB-FT |
| Hz | 60 | Phase | 1 | Locked-rotor Torque | 30.6 LB-FT |
| NEMA Design Code | L | KVA Code | G | Starting Current | 280 A |
| Service Factor (S.F.) | 1.15 | | | No-load Current | 19.3 A |
| NEMA Nom. Eff. | 83 | Power Factor | 86 | Line-line Res. @ 25°C | 0.163 Ω A Ph 0.728 Ω B Ph |
| Rating - Duty | 40C AMB-CONT | | | Temp. Rise @ Rated Load | 100°C |
| S.F. Amps | | | | Temp. Rise @ S.F. Load | 115°C |

Load Characteristics 230 V, 60 Hz, 10 HP

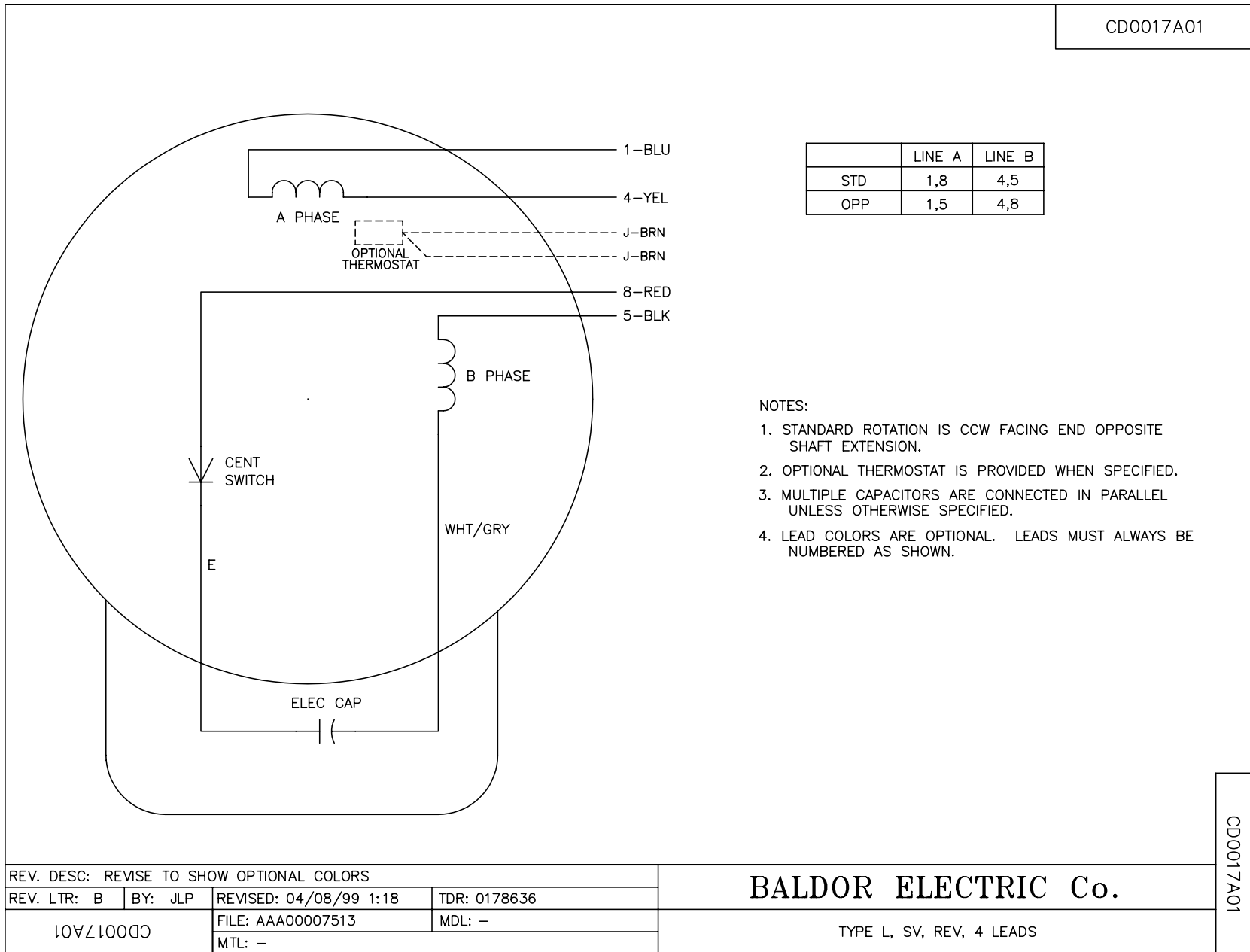
| % of Rated Load | 25 | 50 | 75 | 100 | 125 | 150 | S.F. |
|-----------------|------|------|------|------|------|------|------|
| Power Factor | 56 | 72 | 82 | 86 | 88 | 87 | 87 |
| Efficiency | 63 | 79.3 | 81.1 | 83.7 | 82.8 | 80.7 | 83.2 |
| Speed | 3587 | 3570 | 3552 | 3536 | 3512 | 3482 | 3522 |
| Line amperes | 23.5 | 29 | 37.2 | 45.5 | 55.6 | 68.6 | 51.6 |

Performance Graph at 230V, 60Hz, 10.0HP Typical performance - Not guaranteed values





CDO017A01



| | LINE A | LINE B |
|-----|--------|--------|
| STD | 1,8 | 4,5 |
| OPP | 1,5 | 4,8 |

NOTES:

1. STANDARD ROTATION IS CCW FACING END OPPOSITE SHAFT EXTENSION.
2. OPTIONAL THERMOSTAT IS PROVIDED WHEN SPECIFIED.
3. MULTIPLE CAPACITORS ARE CONNECTED IN PARALLEL UNLESS OTHERWISE SPECIFIED.
4. LEAD COLORS ARE OPTIONAL. LEADS MUST ALWAYS BE NUMBERED AS SHOWN.

| | | | |
|---|---------|------------------------|--------------|
| REV. DESC: REVISE TO SHOW OPTIONAL COLORS | | | |
| REV. LTR: B | BY: JLP | REVISED: 04/08/99 1:18 | TDR: 0178636 |
| CDO017A01 | | FILE: AAA00007513 | MDL: - |
| | | MTL: - | |

BALDOR ELECTRIC Co.

TYPE L, SV, REV, 4 LEADS

CDO017A01