

LittleGIANT®

WATER SYSTEMS PRODUCT CATALOG



TABLE OF CONTENTS

INLINE PRESSURE SOLUTIONS

Inline CP.....	2
Inline 400.....	4
Inline Controls.....	6

JET PUMP AND TANK SYSTEMS

Shallow Well Jet Pump & Tank System.....	11
--	----

JET PUMPS

Shallow Well Jet Pumps.....	13
Shallow Well Jet Pumps.....	15
Convertible Jet Pumps.....	17

LAWN SPRINKLER PUMPS

LSP Series.....	19
-----------------	----

END SUCTION PUMPS

LGDR Series.....	21
------------------	----

PRESSURE TANKS

RL Series.....	25
----------------	----

4" SUBMERSIBLE WELL PUMPS

4" Submersible Well Pumps.....	27
5 GPM.....	31
8 GPM.....	33
12 GPM.....	35
16 GPM.....	37
22 GPM.....	39

4" HIGH CAPACITY PUMPS

4" High Capacity Pumps.....	41
35 GPM.....	43
60 GPM.....	45
90 GPM.....	47

CONTROL BOXES

QD, Standard, & Deluxe.....	49
-----------------------------	----

MOTORS

4" Submersible Motors.....	51
----------------------------	----

REFERENCE

Specifications.....	53
Glossary.....	54

For the most up-to-date product information, visit littlegiant.com.

INLINE CP

APPLICATIONS

- Municipal water or private well systems
- Multi-family dwellings: duplexes, triplexes, and quads
- Increased and constant water pressure from water systems
- Irrigation and water reclamation systems
- Pressure regulation and boosting

FEATURES

- Increases pressure by up to 60 psi
- Handles up to 35 gpm
- Complete packaged system
- Small and compact design
- Simple and easy installation
- NEMA 4 electronics enclosure
- Mount in any configuration
- Product power rating: 1.5 hp (1.1 kW)
- Built-in system protections guard against many common failure modes including: surge protection, voltage underload, locked pump, open circuit, short circuit, and overheated controller
- Capable of operating with more than one pump in parallel for larger volume demand applications
- cCSAus listed



SERIES SPECIFICATIONS

Item No.	Model Description	Input Voltage	Input Phase
90411101	25LGIL1100N4 1 (Inline CP)*	230	Single

*Includes pump, motor, drive, pressure switch, and all cables

REPLACEMENT PARTS & KITS

Item No.	Model Description	Input Voltage	Input Phase
604652	Pressure Tank 2.0 gal (8 L) 1" MNPT	-	-
604653	Pressure Tank 4.5 gal (18 L) 1" MNPT	-	-
305707902	Replacement PMA, IL1100	230	Single
305707903	Mounting Feet	-	-
305707904	Fastener Kit	-	-
305707905	Pressure Sensor Cable	-	-
305707906	Pressure Sensor	-	-
305707907	Drive Assembly	230	Single
305707909	Overpressure Shut-off Switch*	-	-
5850012000	Duplex Alternator	115	Single

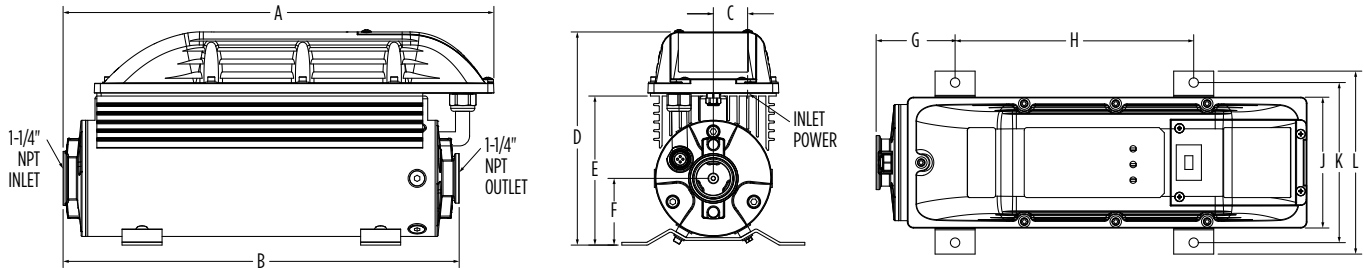
*Overpressure switch is sold as an accessory and is not required for normal operation

INLINE PRESSURE SOLUTIONS



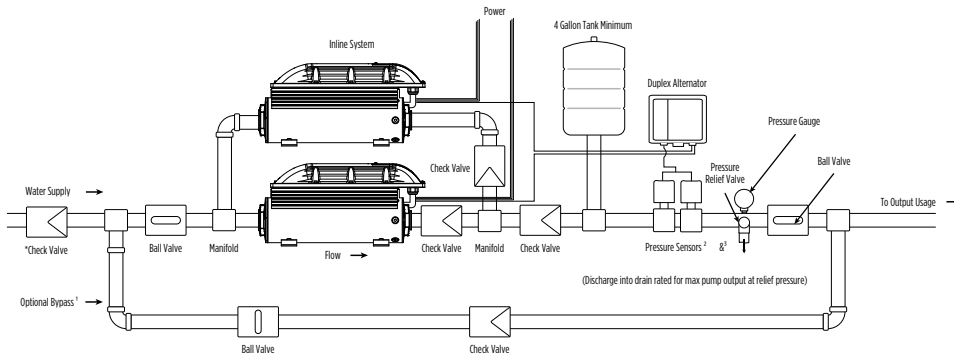
INLINE CP

DIMENSIONS



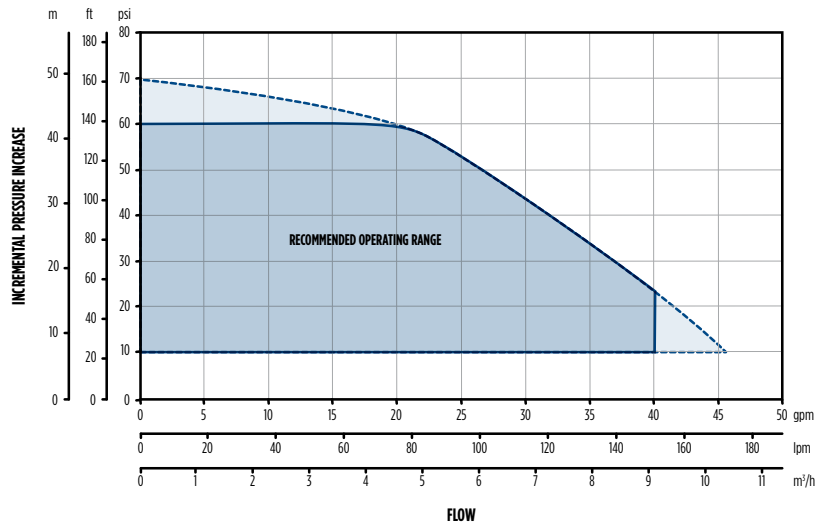
A	B	C	D	E	F	G	H	J	K	L
18.84" (47.9 cm)	17.32" (44.0 cm)	1.50" (3.8 cm)	9.31" (23.6 cm)	6.65" (16.9 cm)	2.92" (7.4 cm)	3.45" 8.7 cm	10.43 (26.5 cm)	5.73" (14.6 cm)	7.00" (17.8 cm)	8.00" (20.3 cm)

TYPICAL INSTALLATION



* If system plumbing does not have a backflow prevention device, a check valve is required on the incoming water supply line
 NOTE: Optional components are shown in a typical installation diagram and should be used at the installer's discretion as required for particular applications; 2 gallon total volume tank is a recommendation only—other tank sizes are acceptable based on specific application conditions.

PERFORMANCE DATA



Note: Running outside of "Recommended operating range" for short periods of time is permissible.

INLINE 400

APPLICATIONS

- City water pressure boosting
- Pressurize water from cistern tank
- Re-pressurizing after filtration
- Irrigation system boosting

FEATURES

- Utilizes proven Franklin Electric pump and motor to create the most trustworthy product on the market
- Simple flow-based controls mean you get the pressure every time you need it
- Protective cap comes standard for outdoor use (for vertical applications only)
- Whisper-quiet operation
- Installs vertically or horizontally
- 1-1/4" NPT inlet and outlet
- 115 V and 230 V models available
- Plug-in electrical cord connected unit
- Protective features: Over/Under voltage protection, dry run, and over temperature
- Product power rating: 1/3 hp, 0.246 kW
- Maximum water temperature: 120 °F/49 °C
- cULus listed
- Classified UL Water Mechanical Device NSF/ANSI 61 and 372 Cold Water 6R21



SERIES SPECIFICATIONS

Item No	Model	HP	Watts	Input Voltage	Hz	Amps (SFS)	Discharge Pressure (PSI)					Cord	Weight
							14	32	44	51	55		
							Performance GPM (LPM)						
92061503	Inline 400	1/3	250	115	60	6.6	20	15	10	5	0	6' (1.8 m) w/plug	35 lbs. (15.9 Kg)
92061504	Inline 400			230	60	3.3	(75.7)	(56.7)	(37.8)	(18.9)	(0)		

REPLACEMENT PARTS & KITS

Item No.	Model Description
305572001	Tank Wrench
305572007	Pressure Switch
305572009	Replacement Tank Body
305572010	Replacement Cover
305572011	Replacement Mounting Base
305572012	Motor Capacitor - 115 V
305572013	Motor Capacitor - 230 V
305572014	Power Cord - 115 V
305572015	Power Cord - 230 V
305572016	Flow Piston Kit
305572017	Tank O-ring
305572018	Outdoor Protective Cap Kit
305572026	Expansion Tank, 2 Liter, 1" MNPT Connection

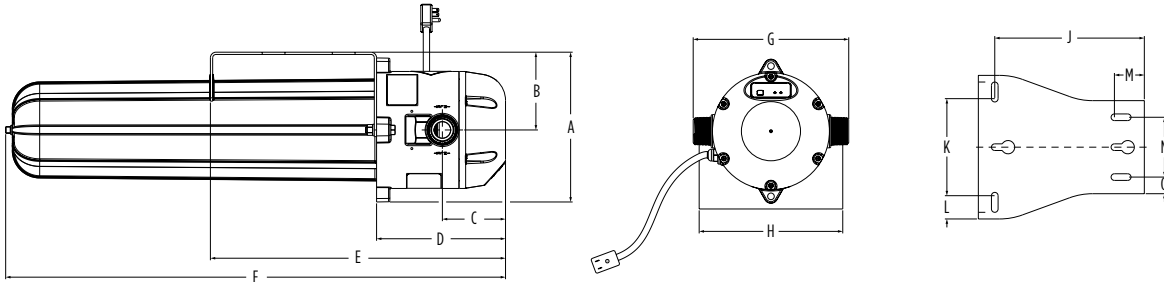
Protective Cap



INLINE PRESSURE SOLUTIONS

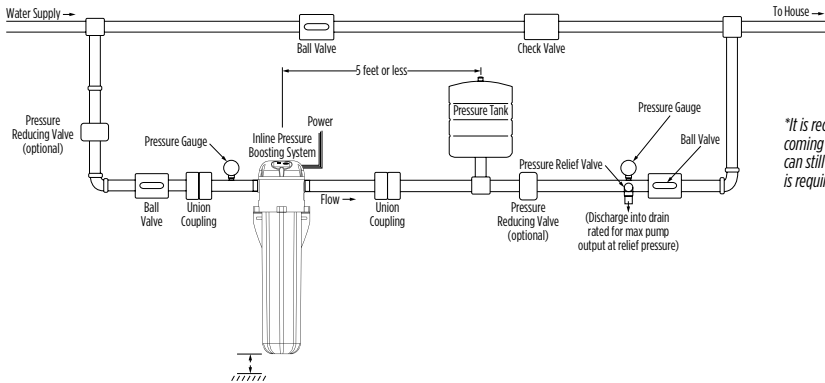
INLINE 400

DIMENSIONS



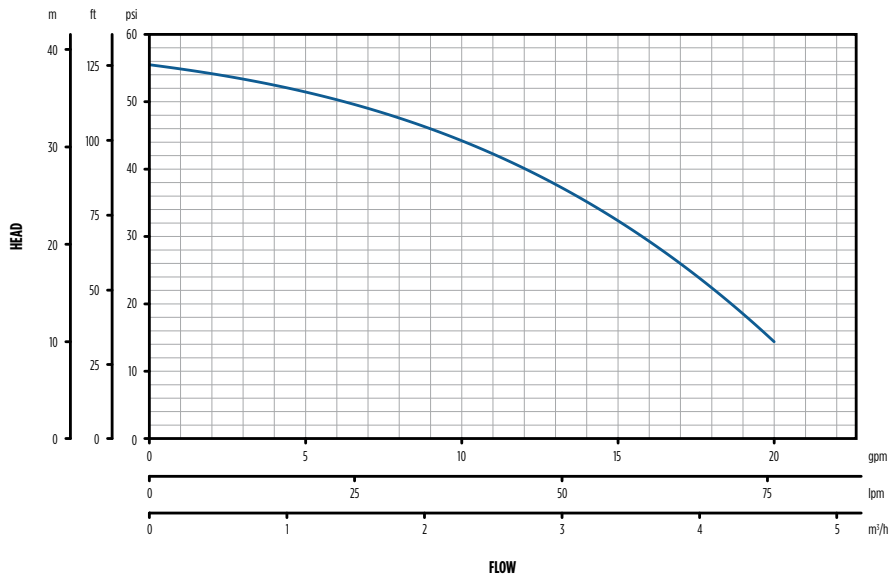
A	B	C	D	E	F	G	H	J	K	L	M	N	O
8.86" (22.5 cm)	4.6" (11.7 cm)	3.74" (9.5 cm)	7.64" (19.4 cm)	17.48" (44.4 cm)	29.61" (75.2 cm)	7.09" (18.0 cm)	8.50" (21.5 cm)	8.86" (22.5 cm)	5.75" (14.6 cm)	1.38" (3.5 cm)	1.77" (4.5 cm)	3.54" (9.0 cm)	.98" (2.5 cm)

TYPICAL INSTALLATION



"It is recommended (where applicable) to install the Inline 400 in PARALLEL with the incoming water supply. This will allow for a "service bypass" so that the typical household can still utilize the incoming water (although at a reduced pressure) if maintenance work is required. This type of installation requires a ball valve be installed as shown above.

PERFORMANCE DATA



INLINE CONTROLS

Franklin Electric's Inline Controls include five pump starting and control devices that pair with a variety of submersible or surface pump up to 20 amps (or approximately 3 hp) to provide or boost the system's overall water pressure – and in many cases, without the need of an additional bladder tank. Depending on application requirements and selected model, the product family offers various forms of system protection, including dry run, dead head pumping, over amperage, locked system, and over pressurization. They also offer two unique features that ensure the system remains functional and hassle free, including: a daily motor rotation start designed to energize the motor at least once every 24 hours to prevent system locking, and a unique automatic restart feature eliminating the need to manually restart the pump in the case of an unexpected trip or fault.

FEATURES BY MODEL



SWC



ADJ



CTL



Model Description	Flow Based Pump Activation	Run Dry Protection	Low-Pressure Backup Activation	Replaces Pressure Switch and Tank	Suction Lift	Includes Pressure Gauge	Adjustable Low-Pressure Backup Activation	Max. Pressure Regulation
InlineSWC	✓	✓	✓	✓	✓			
InlineADJ 230 V	✓	✓	✓	✓	✓	✓	✓	
InlineCTL	✓	✓	✓	✓	✓	✓		✓

NOTE: Proper pump selection is essential for use with the Inline FLW, SWC, SWP, and ADJ as pump shut-off pressure will be realized within the system prior to shut down. If the pump size can not be reduced, select the Inline CTL with built-in pressure reducing valve.

TECHNICAL SPECIFICATIONS

Model Description	Motor Size		Voltage	Max. Current	Max. Temp.	Min. Flow (GPM)	Thread Size
InlineSWC	up to 2 hp	up to 1.5 kW	115/230	16 A	131 °F (55C)	0.25	1" MNPT
InlineADJ 230 V	up to 2 hp	up to 1.5 kW	230	16 A	131 °F (55C)	0.25	1" MNPT
InlineCTL	up to 3 hp	up to 2.2 kW	115/230	20 A	131 °F (55C)	0.25	1 ¼" MNPT

INLINE CONTROLS - SWC

Use with a pressurized water supply or suction lift installation for municipal and well supply sources. The Inline Control SWC and SWP are flow activated smart pump start controls, designed for use in conjunction with a pump where starting and stopping the system based on water usage is desired.

FEATURES

- With flow of 0.25 gpm or greater the pump is activated to ensure continuous operation during water demand cycles
- When flow is less than 0.25 gpm, the pump starts at a minimum pressure of 22 psi
- If the pump starts due to low system pressure, with no additional demand, the Inline SWC will only run the system to rebuild pressure
- Can be wired for 115V or 230V with no internal settings or wiring changes required
- Includes a convenient built-in check valve
- Protects pump from conditions of dry run, overcurrent, and pumping against a closed discharge (dead-head) by powering off the system when water flow stops
- If the pump remains idle for 24 consecutive hours, the device will carry out an autorun feature to keep the system free of debris and clogs
- The system will auto-rest up to 10 times in a 24 hour period if no water is detected, to protect the pump
- Replaces the need for an external pressure tank and differential pressure switch



SWC

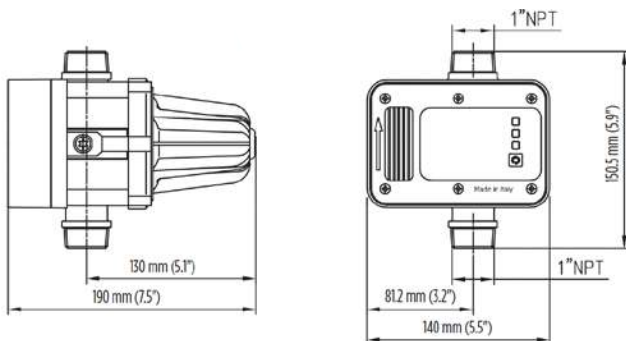
Model Description	Flow Based Pump Activation	Run Dry Protection	Low Pressure Backup Activation	Replaces Pressure Switch and Tank	Suction Lift
InlineSWC	✓	✓	✓	✓	✓

NOTE: Proper pump selection is essential for use with the Inline SWC as pump shut-off pressure will be realized within the system prior to stopping the pump. If the pump size cannot be reduced to a lower output performance within the systems pressure limits, select the Inline CTL with built-in pressure reducing valve.

ORDERING INFORMATION

Model Description	Order No.	Model No.	Motor Size	Voltage	Max. Current	Max. Temp.	Thread Size	Min Flow	Max operating pressure
InlineSWC	91987103	FIL-SWC16	0.75-2 hp (0.55-1.5 kW)	115/230	16 A	131 °F (55C)	1" MNPT	.26 gpm	174 psi (12 Bar)

FIL-SWC16



INLINE CONTROLS - ADJ

Use with a pressurized water supply or suction lift installation for municipal and well supply sources. The Inline Control ADJ is a smart flow activated pump start control, designed for use in conjunction with a pump where starting and stopping the system based on water usage is desired. With water flow being the primary system start command, the unit provides a backup low pressure cut-in point where the pump will start to repressurize the system. The InlineADJ allows this low pressure cut to be adjusted to 22, 29, or 36 PSI to ensure the system will still reach the desired shut-off pressure.

FEATURES

- With flow of 0.25 gpm or greater the pump is activated to ensure continuous operation during water demand cycles
- When flow is less than 0.25 gpm, the user may select between three adjustable cut-in points for a minimum system pressure of 22, 29, or 36 psi
- If the pump starts due to low system pressure, with no additional demand, the Inline ADJ will only run the system to rebuild pressure
- Includes a convenient built-in check valve
- Protects pump from conditions of dry run, overcurrent, and pumping against a closed discharge (dead-head) by powering off the system when water flow stops
- If the pump remains idle for 24 consecutive hours, the device will carry out an autorun feature to keep the system free of debris and clogs.
- The system will auto-rest up to 10 times in a 24 hour period if no water is detected, to protect the pump
- Replaces the need for an external pressure tank and differential pressure switch



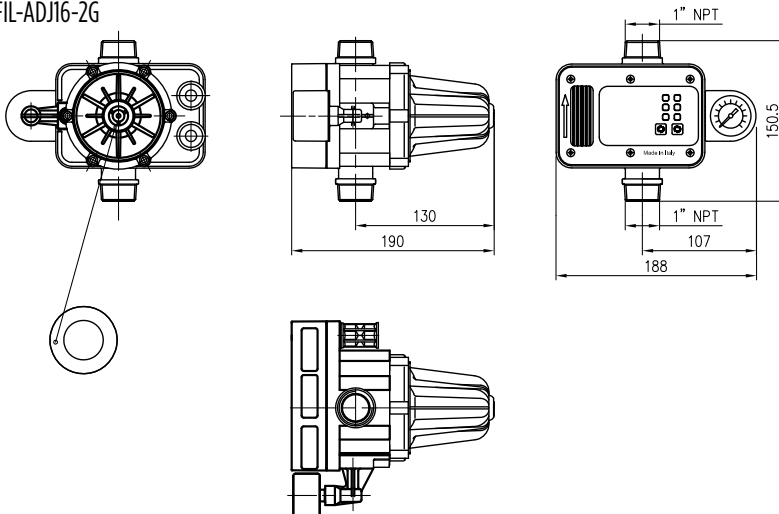
Model Description	Flow Based Pump Activation	Run Dry Protection	Low-Pressure Backup Activation	Replaces Pressure Switch and Tank	Suction Lift	Includes Pressure Gauge	Adjustable Low-Pressure Backup Activation
InlineADJ 230 V	✓	✓	✓	✓	✓	✓	✓

NOTE: Proper pump selection is essential for use with the Inline ADJ as pump shut-off pressure will be realized within the system prior to shut down. If the pump size cannot be reduced to a lower output performance within the systems pressure limits, select the Inline CTL with built-in pressure reducing valve.

ORDERING INFORMATION

Model Description	Order No.	Model No.	Motor Size	Voltage	Max. Current	Min. Flow	Max Temp.	Max Operating Pressure	Thread Size
InlineADJ 230 V	91987106	FIL-ADJ16-2G	2hp (1.5 kW)	230	16 A	.26 gpm	131 °F (55 °C)	174 psi (12 Bar)	1" MNPT

FIL-ADJ16-2G



INLINE CONTROLS - CTL

Use with a pressurized water supply or suction lift installation for municipal and well supply sources. The Inline Control CTL is a smart flow activated pump start control, designed for use in conjunction with a pump where starting and stopping the system based on water usage is desired. By turning the dial on the back of the unit the maximum system pressure may be regulated within the pump's output range to match the application's need.

FEATURES

- With flow of 0.25 gpm or greater the pump is activated to ensure continuous operation during water demand cycles
- Built-in pressure reducing valve to allow for customization of maximum output pressure
- Can be wired for 115V or 230V with no internal settings or wiring changes required
- If the pump starts due to low system pressure, with no additional demand, the Inline SWC and SWP will only run the system to rebuild pressure
- Protects pump from conditions of dry run, over pressure, and pumping against a closed discharge (dead-head) by powering off the system when water flow stops
- If the pump remains idle for 24 consecutive hours, the device will carry out an autorun feature to keep the system free of debris and clogs
- Replaces the need for an external pressure tank and differential pressure switch
- Includes a convenient built-in check valve
- Adjust knob to set the pump's maximum output pressure at a desired regulation point to prevent system over-pressurization

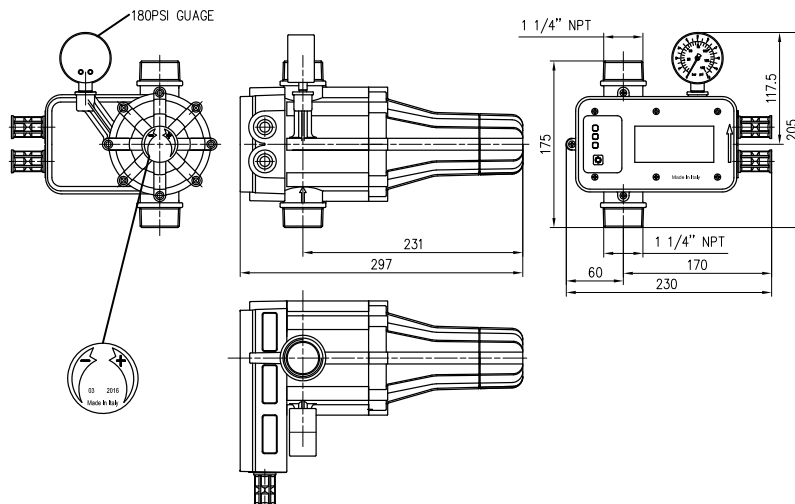


Model Description	Flow Based Pump Activation	Run Dry Protection	Low-Pressure Backup Activation	Replaces Pressure Switch and Tank	Suction Lift	Includes Pressure Gauge	Max. Pressure Regulation
InlineCTL	✓	✓	✓	✓	✓	✓	✓

ORDERING INFORMATION

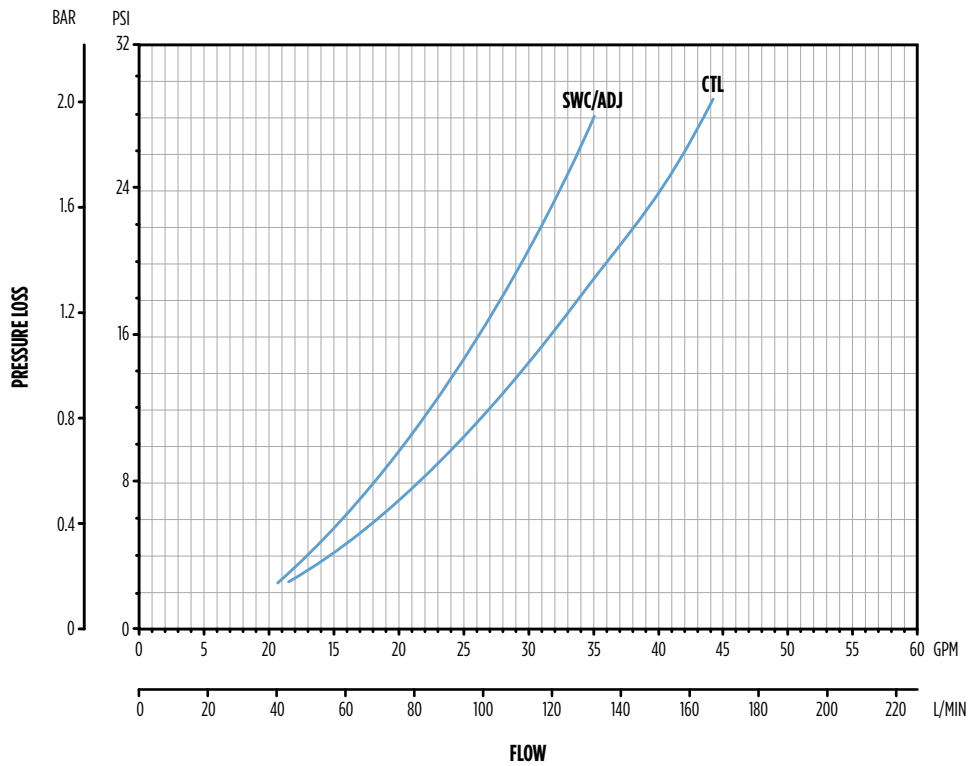
Model Description	Order No.	Model No.	Motor Size	Voltage	Max. Current	Min. Flow	Max Temp.	Max Operating Pressure	Thread Size
InlineCTL	91987107	FIL-CTL20	1-3 hp (0.75-2.2 kW)	115/230	20 A	.26 gpm	131 °F (55 °C)	174 psi (12 Bar)	1 1/4" MNPT

FIL-CTL20



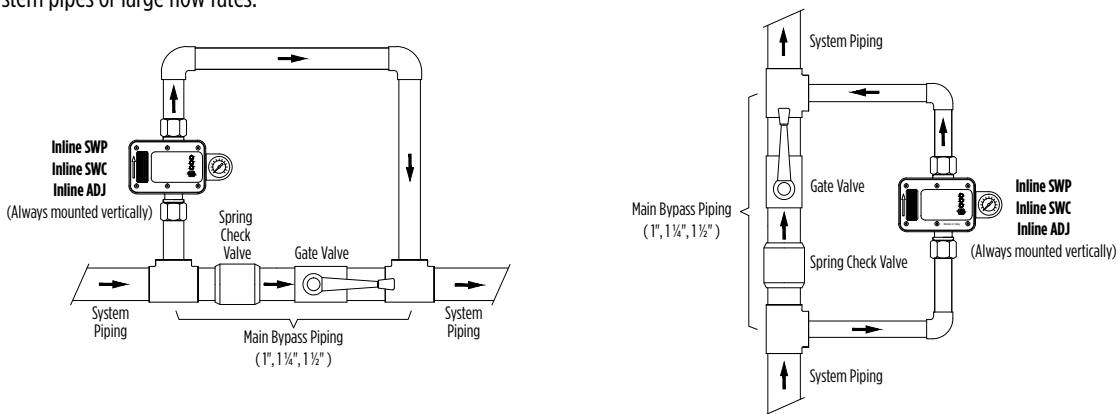
INLINE CONTROLS

FRICITION LOSS



OPTIONAL BYPASS INSTALLATION

For large system pipes or large flow rates.



FRICITION LOSS w/ OPTIONAL BYPASS

Device	Flow Rate (gpm)							
	20	30	40	50	60	70	80	
1" x 1"	3 psi	5 psi	9 psi	14 psi	19 psi	-	-	
1" x 1 1/4"	2 psi	2 psi	3 psi	5 psi	8 psi	10 psi	12 psi	
1" x 1 1/2"	2 psi	2 psi	3 psi	4 psi	6 psi	7 psi	8 psi	

The main bypass piping must not exceed 1 1/2", while the system piping could be larger.

SHALLOW WELL JET PUMP & TANK SYSTEM

APPLICATIONS

- Jet pump and pre-charged pressure tank are factory assembled & ready to install
- For supplying fresh water to rural homes, farms, and cabins
- For installations where the vertical distance from the pump to the pumping water level does not exceed 25 feet (7.6 m)

FEATURES

- Cast iron pump casing
- Dual voltage (115/230V) motor
- Pressure switch preset at 30/50 psi
- Pump has 1-1/4" Suction/Intake; Tank has 3/4" Discharge
- Glass-filled thermoplastic impeller and diffuser
- Clean-out plug to easily unclog the pump nozzle
- Pressure gauge included
- Pre-charged steel pressure tank – 14 U.S. gallons (53 litres)
- High-performance variable geometry Butyl Rubber diaphragm tank membrane
- Internal polypropylene tank liner
- Pressure tank is tested and certified by WQA under NSF/ANSI/CAN Standard 61 for material safety and NSF/ANSI 372 for lead free compliance
- Jet pump is tested and certified by CSA to UL 778 and CSA 108 for electrical safety and NSF/ANSI 372 for lead free compliance

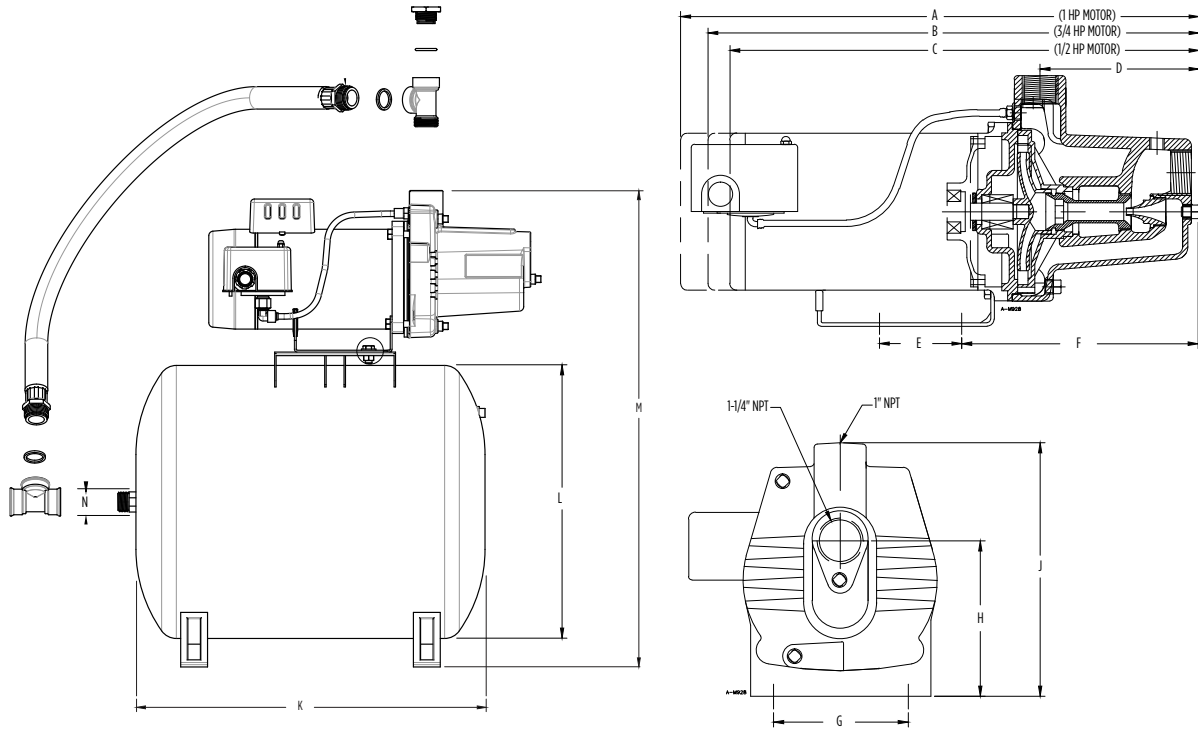


SERIES SPECIFICATIONS

Item No.	Model No.	HP	Tank	Type	Total Suction Lift (ft/m)	Pump Capacity GPM (LPM) Discharge Pressure In PSI									Max. Pressure in PSI (kg/cm ²)
						20	25	30	35	40	45	50	55	60	
558932	LGS-75/ LG14AH	3/4	14 gal	Horizontal	0	18.3	18.2	18.1	16.4	13.7	10.5	8.3	5.9	3.6	68.0
					5	16.7	16.7	16.7	15.7	12.6	10.1	7.2	4.8	1.8	65
					10	15.1	15.0	15	14.1	11.5	8.5	6.0	3.6	0.8	62.0
					15	13.2	13.2	13.1	12.1	10.2	6.8	4.7	2.8	0.0	60
					20	11.0	10.9	10.9	10.2	8.7	6.1	4.4	1.3	0.0	56.0
					25	8.6	8.6	8.4	8.3	7.2	4.9	2.9	0.0	0.0	55

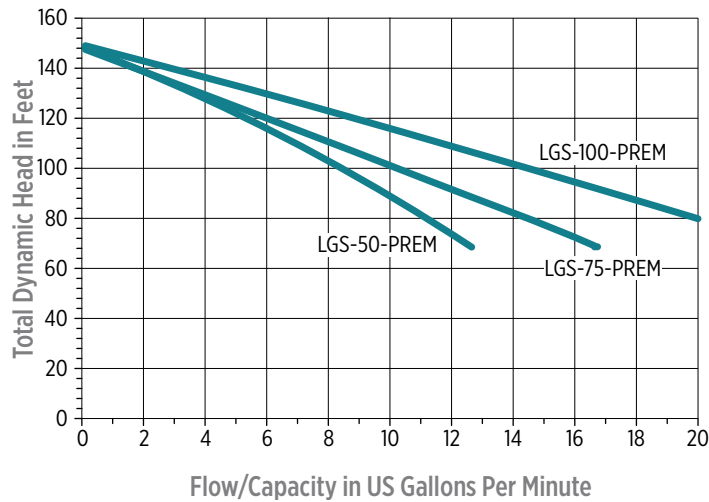
SHALLOW WELL JET PUMP & TANK SYSTEM

DIMENSIONS



A	B	C	D	E	F	G	H	J	K	L	M	N
18.5" (47.0 cm)	18.1" (46.0 cm)	18.1" (46.0 cm)	6.2" (15.7 cm)	2.0" (5.05 cm)	9.3" (23.7 cm)	4.4" (11.3 cm)	5.5" (13.9 cm)	9.0" (22.9 cm)	21.3" (54.1 cm)	15.7" (39.9 cm)	27.9" (70.9 cm)	3/4" MNPT

PERFORMANCE DATA



Flow/Capacity in US Gallons Per Minute at 5' of Lift

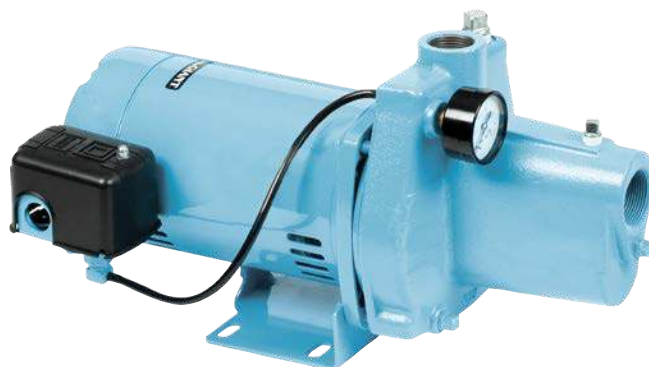
SHALLOW WELL JET PUMPS

APPLICATIONS

- For supplying fresh water to rural homes, farms, and cabins
- For installations where the vertical distance from the pump to the pumping water level does not exceed 25 feet (7.6 m)

FEATURES

- Cast iron casing and seal plate for durability and long life
- Higher than standard NEMA service factor dual compartment motor
- Dual voltage 115/230 V
- Pressure switch preset at 30/50 psi
- 1-1/4" (31.7 mm) suction, 1" NPT (25.4 mm) discharge
- Pressure gauge included with all models
- Stainless steel motor shaft and dual ball bearings
- Precision-engineered thermoplastic impeller, diffuser, nozzle, and venturi
- Clean-out plug to easily unclog nozzle
- Fully serviceable with two-year warranty

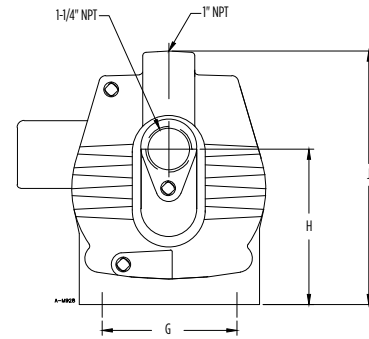
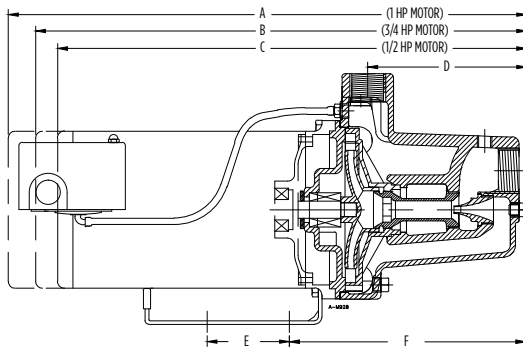


SERIES SPECIFICATIONS

Item No.	Model	HP	Phase	Volts	S.F Amps	Total Suction Lift (ft/m)	Pump Capacity GPM (LPM) Discharge Pressure in PSI										Max. Pressure in PSI (kg/cm ²)
							20	25	30	35	40	45	50	55	60		
558274	JP-050-C	1/2	1	115/230	12.4/6.2	5 (1.5)	12.8 (48.5)	12.5 (47.3)	12.3 (46.6)	12.1 (45.8)	11.2 (42.4)	9.5 (36.0)	6.9 (26.1)	4.3 (16.3)	2.0 (7.6)	64.2 (4.5)	
						10 (3.1)	11.5 (43.5)	11.3 (42.8)	11.0 (41.6)	10.8 (40.9)	10.4 (39.4)	8.5 (32.2)	6.0 (22.7)	3.4 (12.9)	1.0 (3.8)	62.0 (4.4)	
						15 (4.6)	9.8 (37.1)	9.7 (36.7)	9.6 (36.4)	9.5 (36.0)	9.4 (35.6)	7.3 (27.7)	4.7 (17.8)	2.2 (8.3)	-	59.9 (4.2)	
						20 (6.1)	8.3 (31.4)	8.1 (30.7)	7.8 (29.5)	7.7 (29.2)	7.6 (28.8)	5.7 (21.6)	3.5 (13.3)	1.0 (3.8)	-	57.7 (4.1)	
558275	JP-075-C	3/4	1	115/230	14.8/7.4	5 (1.5)	16.2 (61.3)	16.0 (60.6)	15.8 (59.8)	15.6 (59.1)	15.4 (58.3)	12.1 (45.8)	8.7 (33.0)	5.7 (21.6)	2.9 (11.0)	65.0 (4.6)	
						10 (3.1)	14.3 (54.1)	14.0 (53)	13.7 (51.9)	13.5 (51.1)	13.2 (50.0)	10.6 (40.1)	7.6 (28.8)	4.6 (17.4)	1.6 (6.1)	62.8 (4.4)	
						15 (4.6)	12.1 (45.8)	11.7 (44.3)	11.3 (42.8)	11.0 (41.7)	10.6 (40.1)	9.3 (35.2)	6.3 (23.9)	3.2 (12.1)	0.2 (8.0)	60.6 (4.3)	
						20 (6.1)	9.9 (37.5)	9.6 (36.3)	9.3 (35.2)	9.0 (34.1)	8.7 (33.0)	7.8 (29.5)	4.8 (18.2)	1.9 (7.2)	-	58.5 (4.1)	
558276	JP-100-C	1	1	115/230	19.9/9.95	5 (1.5)	24.8 (93.9)	24.7 (93.5)	23.2 (87.8)	19.8 (75.0)	16.5 (62.5)	13.1 (49.6)	9.5 (36.0)	6.3 (23.9)	3.4 (12.9)	66.2 (4.7)	
						10 (3.1)	21.5 (81.4)	21.2 (80.3)	20.1 (76.1)	18.4 (69.7)	15.2 (57.6)	11.5 (43.6)	7.9 (29.9)	4.9 (18.6)	2.4 (9.1)	64.2 (4.5)	
						15 (4.6)	18.1 (68.5)	17.8 (67.7)	17.4 (65.9)	16.7 (63.2)	13.8 (52.2)	10.3 (39.0)	6.9 (26.1)	4.0 (15.1)	1.3 (4.9)	62.1 (4.4)	
						20 (6.1)	14.4 (54.5)	14.3 (54.2)	14.2 (53.8)	14.6 (55.3)	12.3 (46.7)	9 (34.1)	5.3 (20.1)	2.3 (8.7)	0.2 (6.0)	60.1 (4.2)	
						25 (7.6)	10.5 (39.8)	10.5 (39.8)	10.4 (39.4)	10.3 (39.0)	8.8 (33.3)	7 (26.5)	4.2 (15.9)	1.3 (4.9)	-	57.2 (4.0)	

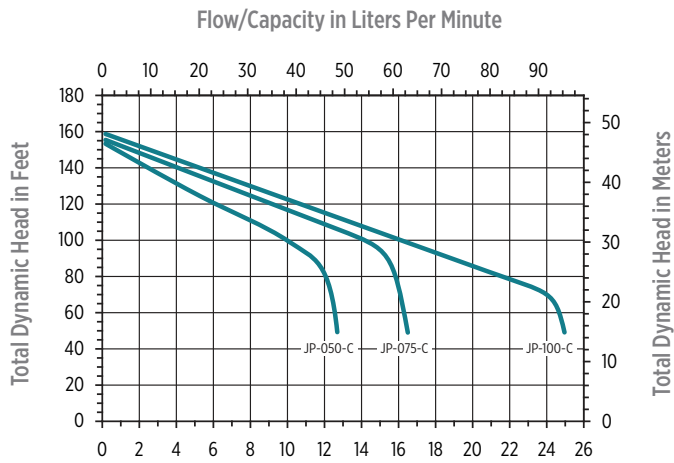
SHALLOW WELL JET PUMPS

DIMENSIONS

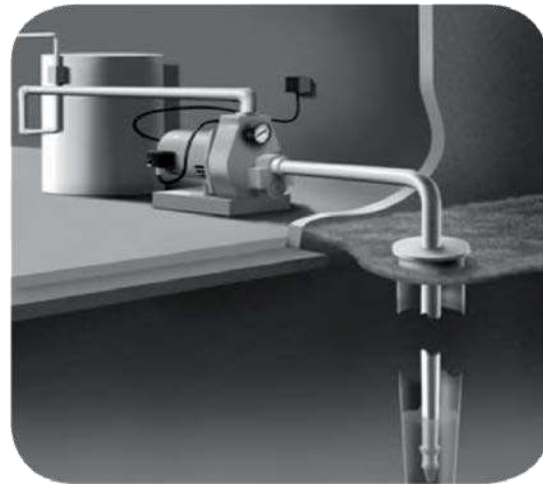


A	B	C	D	E	F	G	H	J
18.9" (48.0 cm)	19.9" (50.5 cm)	17.1" (43.4 cm)	6.00" (15.2 cm)	3.00" (7.6 cm)	9.38" (23.8 cm)	4.85" (12.3 cm)	4.62" (11.7 cm)	9.80" (25.1 cm)

PERFORMANCE DATA



TYPICAL INSTALLATION



SHALLOW WELL JET PUMPS

APPLICATIONS

- For supplying fresh water to rural homes, farms, and cabins
- For installations where the vertical distance from the pump to the pumping water level does not exceed 25 feet (7.6 m)

FEATURES

- Cast iron casing
- Dual voltage 115/230 V
- Factory pre-set 30/50 pressure switch
- 1-1/4" FNPT (31.7 mm) suction, 1" FNPT (25.4 mm) discharge
- Pressure gauge included with all models
- Glass-filled thermoplastic impeller and diffuser
- Clean-out plug to easily unclog nozzle
- Tested and certified by CSA to UL 778 and CSA 108 for electrical safety and NSF/ANSI 372 for lead free compliance

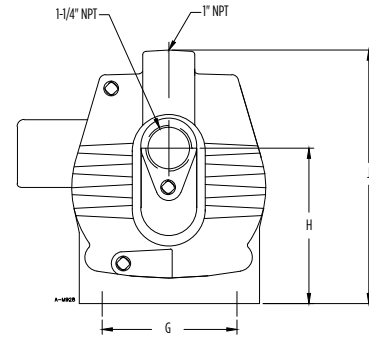
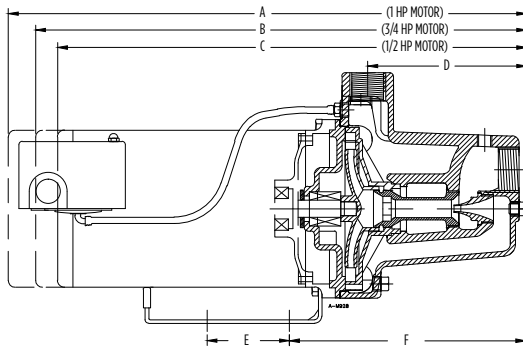


SERIES SPECIFICATIONS

Item No.	Model	HP	Total Suction Lift (ft/m)	Pump Capacity GPM (LPM) Discharge Pressure in PSI									Max. Pressure in PSI (kg/cm ²)
				20	25	30	35	40	45	50	55	60	
558929	LGS-50-PREM	1/2	0	14.3	14.3	14.2	14.0	11.8	9.0	7.4	5.4	3.3	68
			5	12.8	12.8	12.7	12.6	10.4	8.2	6.2	3.8	1.0	65
			10	11.6	11.6	11.3	11.2	9.2	7.1	5.6	3.6	0.0	60
			15	10.2	10.2	10.0	9.7	8.2	6.1	4.4	2.7	0.0	60
			20	8.7	8.7	8.5	8.3	7.5	5.4	3.7	1.1	0.0	56
			25	7.0	7.0	6.9	6.8	6.7	4.2	1.9	0.0	0.0	55
558930	LGS-75-PREM	3/4	0	18.3	18.2	18.1	16.4	13.7	10.5	8.3	5.9	3.6	68
			5	16.7	16.7	16.7	15.7	12.6	10.1	7.2	4.8	1.8	65
			10	15.1	15.0	15.0	14.1	11.5	8.5	6.0	3.6	0.8	62
			15	13.2	13.2	13.1	12.1	10.2	6.8	4.7	2.8	0.0	60
			20	11.0	10.9	10.9	10.2	8.7	6.1	4.4	1.3	0.0	56
			25	8.6	8.6	8.4	8.3	7.2	4.9	2.9	0.0	0.0	55
558931	LGS-100-PREM	1	0	28.6	28.0	25.0	21.0	18.1	14.5	11.4	8.3	4.8	68
			5	25.8	25.7	23.2	19.7	16.5	12.7	9.5	6.1	3.8	65
			10	23.1	22.9	21.5	18.4	15.0	10.7	8.0	3.9	1.1	62
			15	20.0	19.8	19.5	16.9	13.7	9.1	6.6	3.7	0.0	60
			20	16.8	16.6	16.5	14.9	12.1	8.4	5.0	1.5	0.0	56
			25	13.3	13.2	13.3	13.1	10.5	7.8	4.5	0.0	0.0	55

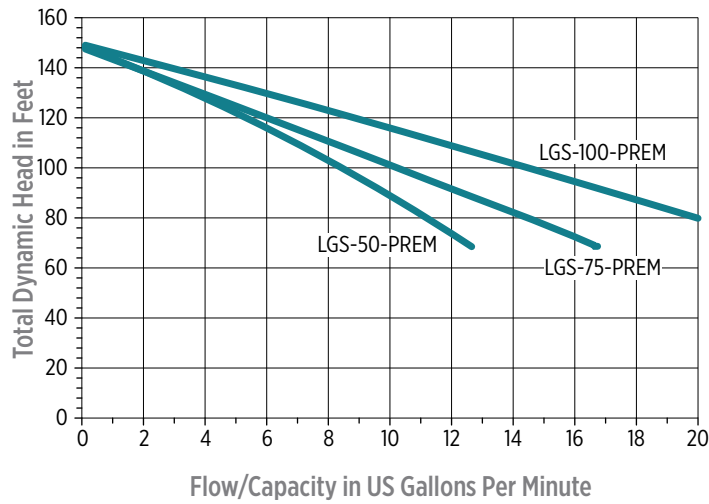
SHALLOW WELL JET PUMPS

DIMENSIONS

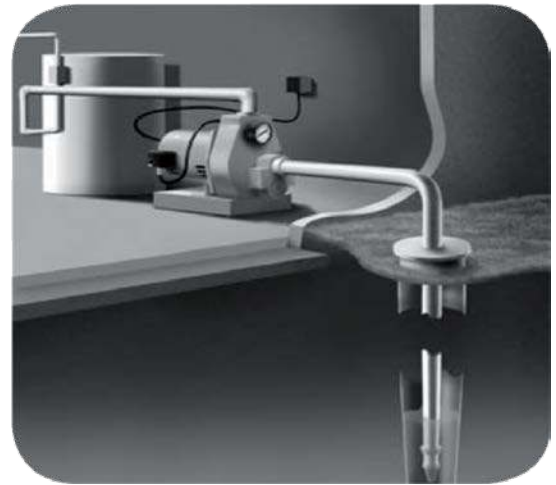


A	B	C	D	E	F	G	H	J
18.5" (47.0 cm)	18.1" (46.0 cm)	18.1" (46.0 cm)	6.2" (15.7 cm)	2.0" (5.05 cm)	9.3" (23.7 cm)	4.4" (11.3 cm)	5.5" (13.9 cm)	9.0" (22.9 cm)

PERFORMANCE DATA



TYPICAL INSTALLATION



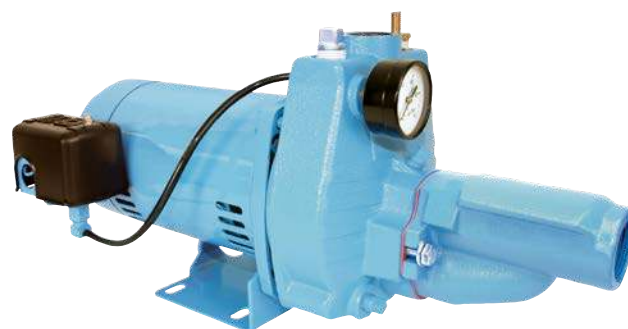
CONVERTIBLE JET PUMPS

APPLICATIONS

- For supplying fresh water to rural homes, farms, and cabins
- For installations where the vertical distance from the pump to the pumping water level does not exceed 90 feet (27.4 m)

FEATURES

- Cast iron casing and seal plate for durability and long life
- Higher than standard NEMA service factor dual compartment motor
- Dual voltage 115/230 V
- Pressure switch preset at 30/50 psi
- 1-1/4" (31.7 mm) suction
- 1" NPT (25.4 mm) discharge
- Brass flow control valve included
- Pressure gauge included with all models
- Stainless steel motor shaft and dual ball bearings
- Precision-engineered thermoplastic impeller, diffuser, nozzle, and venturi
- Injector kit included for both shallow and deep well installations
- Fully serviceable with two-year warranty



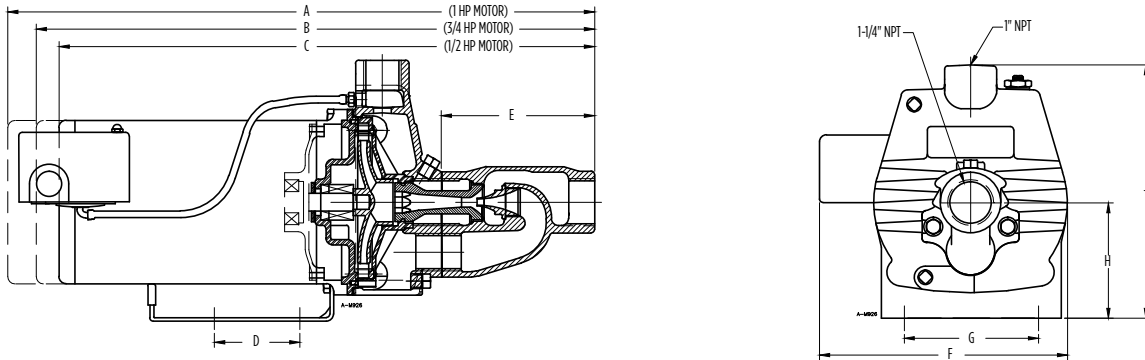
SERIES SPECIFICATIONS

Item No.	Model	HP	Phase	Volts	Amps		Total Suction Lift (ft/m)	Pump Capacity GPM (LPM) Discharge Pressure in PSI								Max. Pressure in PSI (kg/cm ²)	
								20	25	30	35	40	45	50	55		60
558281	JPC-050-C	1/2	1	115/230	12.4/6.2	Shallow	5 (1.5)	11.1 (42.0)	11 (41.6)	10.9 (41.3)	10.8 (40.9)	10.7 (40.5)	9.2 (34.8)	7.4 (28.1)	5.9 (22.4)	4.5 (17.1)	76.2 (5.3)
							15 (4.6)	8.1 (31.7)	8.0 (30.3)	7.9 (29.9)	7.8 (29.5)	7.7 (29.2)	7.3 (27.7)	5.9 (22.4)	4.4 (16.7)	3.1 (11.8)	71.7 (5.1)
							25 (7.6)	4.8 (18.2)	4.8 (18.2)	4.7 (17.8)	4.7 (17.8)	4.6 (17.4)	4.5 (17.1)	4.4 (16.7)	3.2 (12.1)	1.9 (7.2)	67.5 (4.8)
						Deep	20 (6.1)	-	10.7 (3.3)	9.2 (2.8)	7.8 (2.4)	6.5 (2.0)	5.4 (1.7)	4.5 (1.4)	3.6 (1.1)	2.9 (.90)	85 (5.8)
							50 (15.3)	-	6.8 (2.1)	5.8 (1.8)	4.8 (1.5)	4.0 (1.2)	3.2 (1.0)	2.4 (.08)	1.8 (.60)	1.3 (.40)	72 (5.1)
							80 (24.4)	-	4.1 (1.3)	3.4 (1.1)	2.8 (.85)	2.2 (.07)	1.6 (.49)	1 (.30)	0.4 (.01)	-	59 (4.2)
558282	JPC-075-C	3/4	1	115/230	14.8/7.4	Shallow	5 (1.5)	18.2 (69)	17.9 (67.8)	17.7 (67.0)	16.6 (62.8)	14.3 (54.2)	12.0 (45.4)	9.7 (36.7)	7.4 (28)	5.1 (18.9)	71 (5.0)
							15 (4.6)	12.7 (48.1)	12.5 (47.3)	12.4 (47.0)	12.2 (46.2)	12.0 (45.5)	9.9 (37.5)	7.5 (28.4)	5.3 (20.1)	3.0 (11.4)	66.7 (4.7)
							25 (7.6)	7.7 (29.2)	7.5 (28.1)	7.4 (28.0)	7.1 (26.9)	6.9 (26.1)	6.7 (25.4)	5.0 (18.9)	3.0 (11.4)	1.0 (3.8)	62.4 (4.4)
						Deep	20 (6.1)	-	11.5 (43.6)	9.8 (37.1)	7.6 (28.8)	6.8 (25.8)	5.7 (21.6)	4.7 (17.8)	3.8 (14.4)	3.0 (11.4)	86 (6.1)
							50 (15.3)	-	7.4 (28.0)	6.1 (23.1)	5.1 (19.3)	4.1 (15.5)	3.3 (12.5)	2.5 (9.5)	1.9 (7.2)	1.3 (5.0)	73 (5.13)
							90 (27.5)	-	4.5 (17.1)	3.5 (13.3)	2.8 (10.6)	2.1 (8.0)	1.5 (5.7)	1.0 (3.8)	.50 (1.9)	-	60 (4.2)
558283	JPC-100-C	1	1	115/230	19.9/9.95	Shallow	5 (1.5)	20.2 (76.4)	20.1 (76.1)	19.9 (75.3)	19.5 (73.8)	16.7 (63.2)	13.9 (52.6)	11.1 (42.0)	8.3 (31.4)	5.6 (21.2)	71.0 (5.0)
							15 (4.6)	14.5 (54.8)	14.3 (54.2)	14.1 (53.4)	13.8 (52.3)	13.6 (51.5)	11.4 (43.2)	8.7 (33)	6.0 (22.7)	3.3 (12.5)	66.7 (4.7)
							25 (7.6)	9.1 (34.5)	8.9 (33.7)	8.8 (33.3)	8.7 (33.0)	8.6 (32.6)	8.5 (32.2)	6.0 (22.7)	3.6 (13.6)	1.2 (4.6)	62.4 (4.4)
						Deep	20 (6.1)	-	12.8 (48.5)	10.5 (39.8)	8.7 (33.0)	7.3 (27.7)	6.6 (25.0)	5.2 (19.7)	4.4 (16.7)	3.6 (13.6)	87.0 (6.1)
							50 (15.3)	-	8.4 (31.8)	7.2 (27.3)	6.0 (22.7)	5.0 (18.9)	4.2 (15.9)	3.4 (12.9)	2.6 (9.9)	1.9 (7.2)	74.0 (5.2)
							90 (27.5)	-	4.3 (16.3)	3.4 (12.9)	2.7 (10.2)	1.9 (7.2)	1.8 (6.8)	.7 (2.7)	-	-	56.7 (4.0)

Item No.	Model	Description
305446946	1/2 Injector Kit	Injector Kit for JPC-050-C
305446947	3/4 & 1 Injector Kit	Injector Kit for JPC-075-C/JPC-100-C

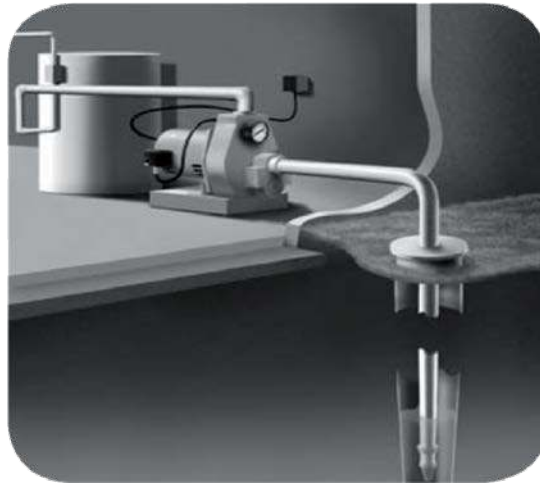
CONVERTIBLE JET PUMPS

DIMENSIONS



A	B	C	D	E	F	G	H	J
20.58" (52.2 cm)	19.58" (49.7 cm)	18.78" (47.7 cm)	3.00" (7.6 cm)	5.38" (13.6 cm)	9.00" (22.8 cm)	4.85" (12.3 cm)	4.17" (10.5 cm)	10.00" (25.4 cm)

TYPICAL INSTALLATION



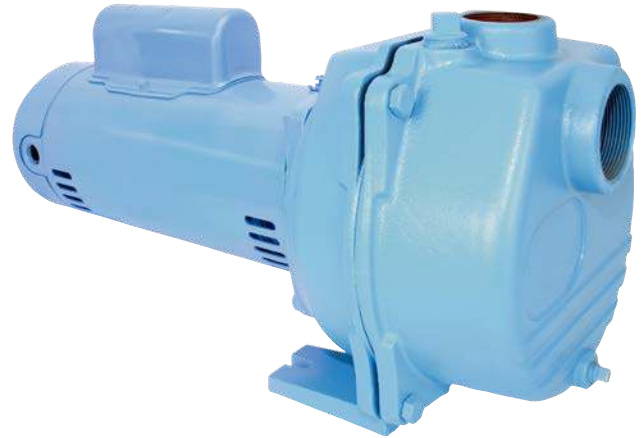
LSP SERIES

APPLICATIONS

- For both residential and commercial lawn and turf sprinkler systems, irrigation, gardens, and general water transfer

FEATURES

- Self priming
- Cast iron casing and seal plate for durability and long life
- Single-phase capacitor start, 115/230 dual voltage on 1 hp and 1-1/2 hp models
- Higher than standard NEMA service factors (230 V on 2 hp model)
- Standard 5/8" rotating mechanical seal, for a reliable seal against water leakage
- 2" NPT (51 mm) suction, 1-1/2" NPT (38 mm) discharge
- Priming plug to facilitate priming
- Drain plug for easy drainage of pump
- Fully serviceable with two-year warranty
- 2 hp models use a brass impeller

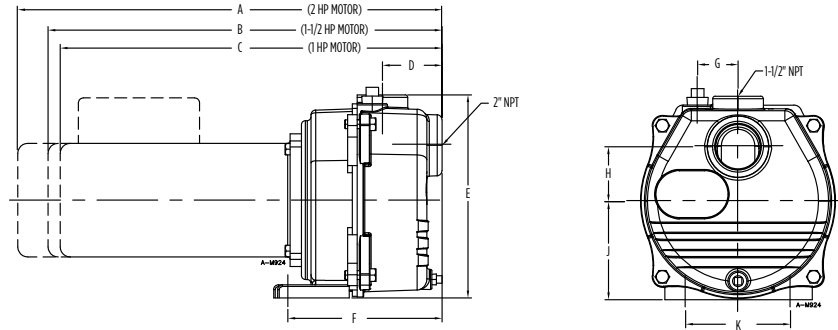


SERIES SPECIFICATIONS

Item No.	Model	HP	Phase	Volts	S.F. Amps	Pump Capacity GPM (LPM) Discharge Pressure in PSI @ 5' (1.5 m) Lift				Max. Pressure in PSI (kg/cm ²)
						10	20	30	40	
558294	LSP-100-C	1	1	115/230	19.9/9.95	72 (272.5)	62 (234.7)	46 (174.1)	20 (75.7)	46 (3.3)
558295	LSP-150-C	1-1/2	1	115/230	24.0/12.0	90 (340.7)	80 (302.9)	64 (242.3)	40 (151.4)	47 (3.3)
558296	LSP-200-C	2	1	230	11.2	97 (367.2)	90 (340.7)	74 (280.1)	47 (177.9)	48 (3.4)
558298	LSPH-200-C	2	1	230	11.2	84 (318)	81 (306.6)	73 (276.3)	58 (219.6)	57 (4.1)

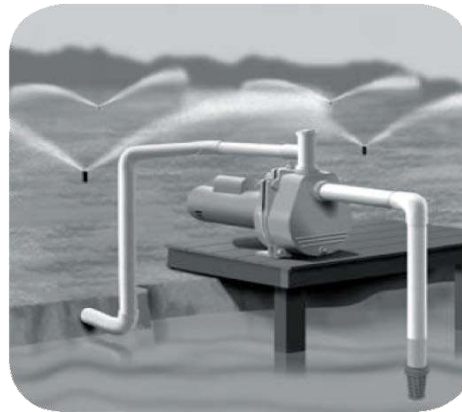
LSP SERIES

DIMENSIONS

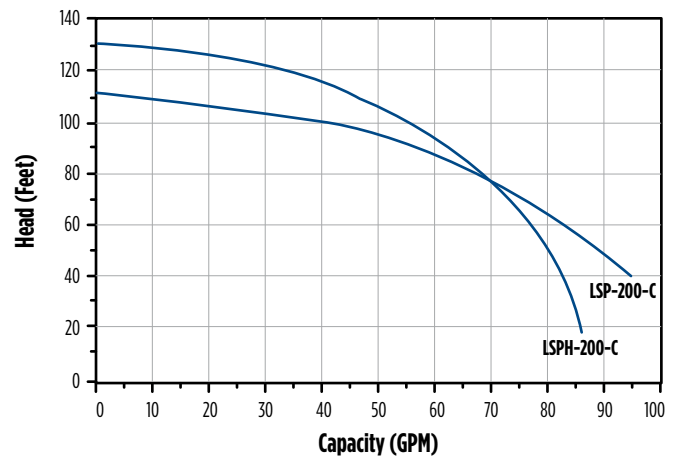
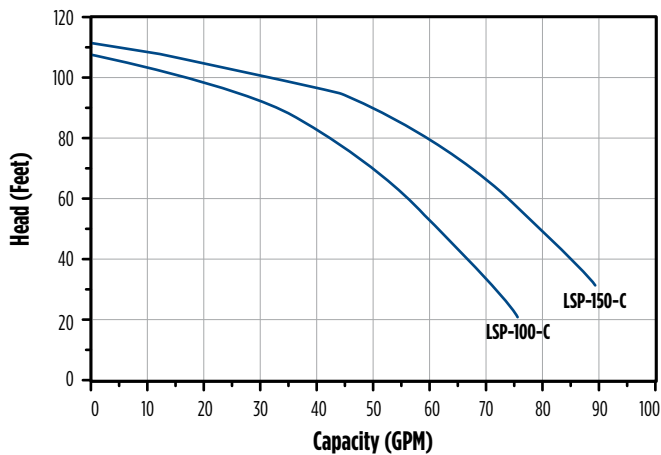


A	B	C	D	E	F	G	H	J	K
21.00" (53.3)	19.50" (49.5)	18.90" (48.0)	2.95" (7.5)	10.05" (25.5)	7.63" (19.3)	2.00" (5.1)	2.71" (6.9)	4.84" (12.3)	5.18" (13.2)

TYPICAL INSTALLATION



PERFORMANCE DATA



LGDR SERIES

APPLICATIONS

- Water circulation
- Spraying systems
- Booster service
- Jockey pump service
- Liquid transfer
- General purpose pumping

FEATURES

- Back pull-out design provides access to internal parts without disturbing the plumbing
- Robust cast iron volute standard
- Volute discharge can be rotated in 90° increments with top vertical standard from the factory
- Multiple 1/4" NPT drain/pressure ports enable winterizing no matter the volute orientation
- Enclosed impeller design for increased efficiencies; thermoplastic and stainless steel options
- Every pump unit factory wet tested to insure customer satisfaction
- Suitable for horizontal or vertical (motor end up) installation
- Comes with ODP standard NEMA motors
- Rotation: right hand; clockwise when viewed from motor end
- Maximum fluid handling temperature 120° F (48° C)
- Square Flange with 1/2" threaded SS shaft, impeller mounts directly on motor shaft



SERIES SPECIFICATIONS

Series	HP Range	Suction	Discharge	Max Flow	Max Head
LGDR1	1/2 - 1	1-1/4" NPT	1" NPT	65 GPM	115'
LGDR2	1 - 2	1-1/2" NPT	1-1/4" NPT	90 GPM	130'

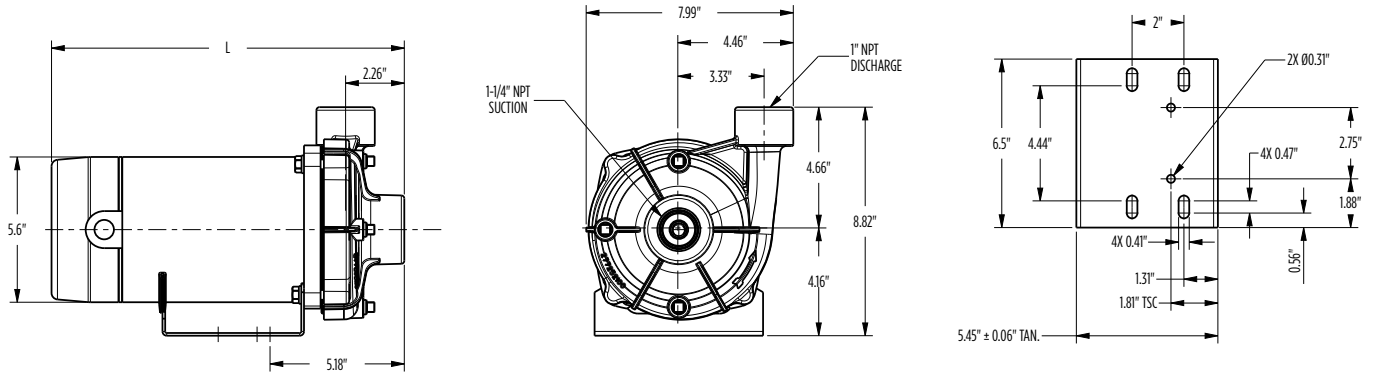
MATERIALS OF CONSTRUCTION

Materials of Construction	Volute	Impeller	Seal Plate	Volute O-ring	Motor Bracket	Wear Ring	Shaft Seal	Shaft Coupling
LGDRIS-CP	Cast Iron, ASTM-A48, Class 30	PPE+PS 30% GF*	Cast Iron Class 25 ASTM A48	Nitrile	N/A	300 Series SS	PHEN/CER x BUNA-SS	N/A
LGDR2S-CS	Cast Iron, ASTM-A48, Class 30	304 Stainless Steel	Cast Iron Class 25 ASTM A48	Nitrile	N/A	300 Series SS	PHEN/CER x BUNA-SS	N/A

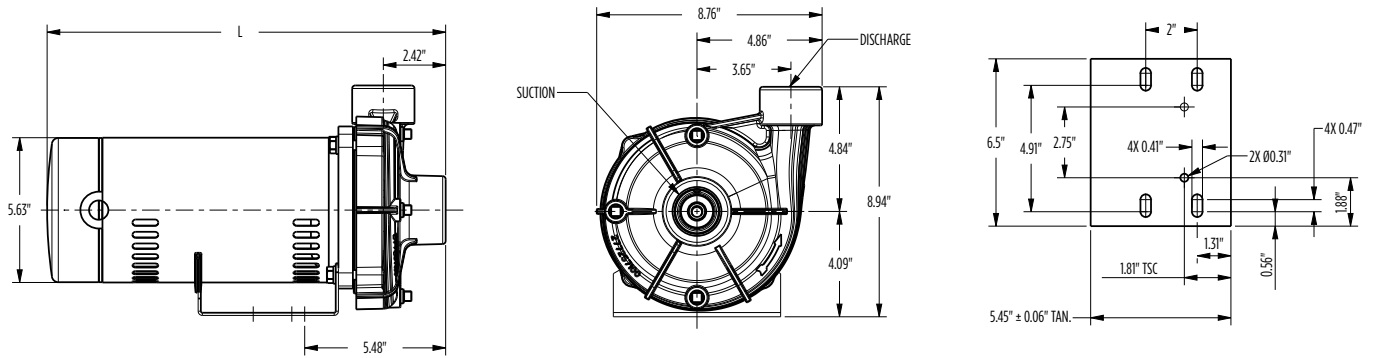
* Polyphenylene Ether Polystyrene Modified

LGDR SERIES

DIMENSIONS



Model	HP	PH	L (in)	Suction	Discharge	Drain Ports (3)
LGDR1S05	1/2	1	13.61	1-1/4" NPT	1" NPT	1/4"
LGDR1S07	3/4		14.23			
LGDR1S1	1		15.11			



Model	HP	PH	L (in)	Suction	Discharge	Drain Ports (3)
LGDR2S1	1	1	15.48	1-1/2" NPT	1-1/4" NPT	1/4"
LGDR2S1S	1-1/2		16.23			
LGDR2S2	2		17.45			

END SUCTION PUMPS

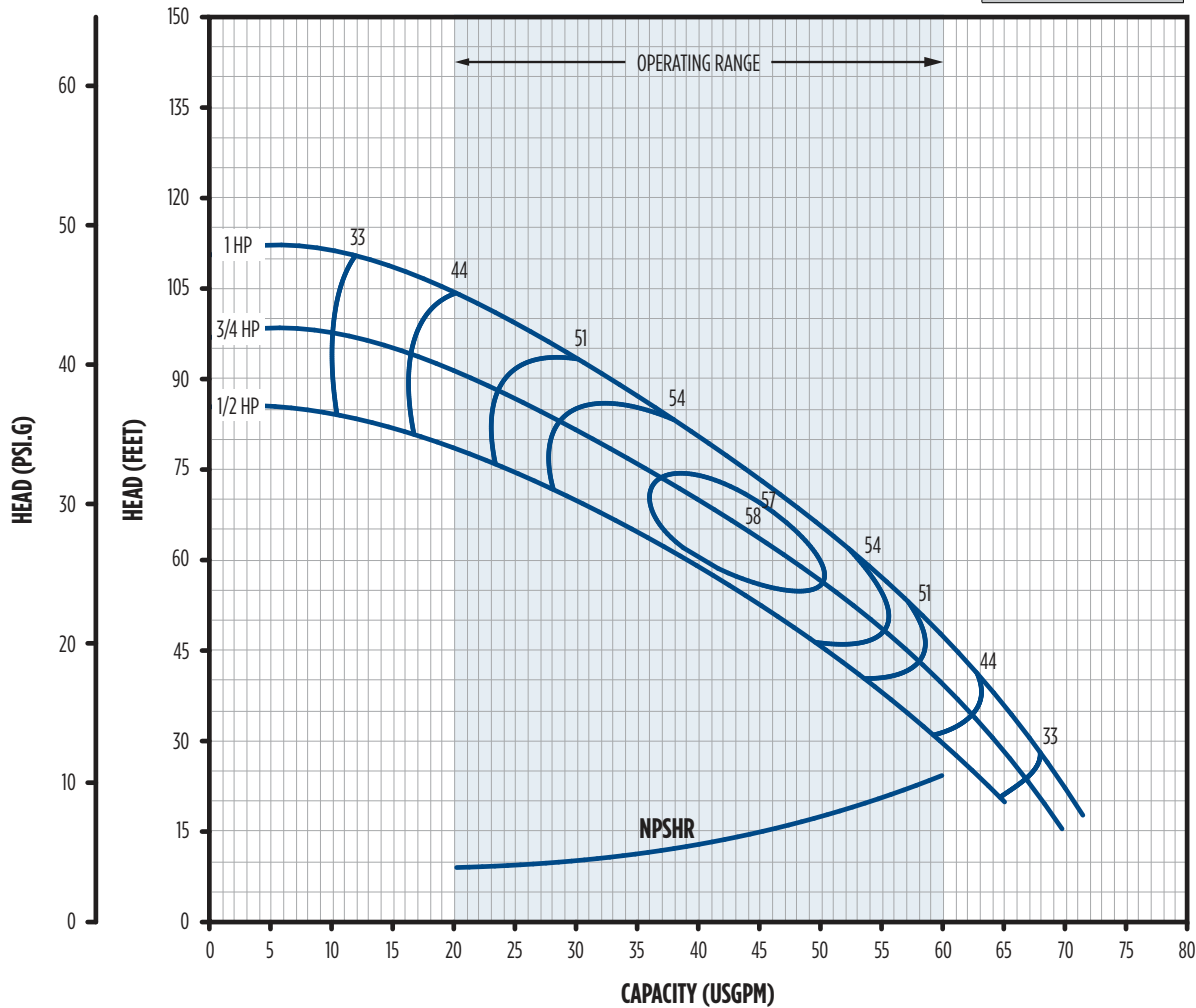


LGDRIS-CP

PERFORMANCE

PEI_{CL} Number

0.90



LGDRIS-CP	HP	PEI	Volute	Impeller	Seal Type	Fluid Max °F	Capacity in GPM at Total Feet of Head Indicated										Max (PSI)
							30	40	50	60	70	80	90	100	110	120	
LGDRIS05-CP	1/2	0.90	CI	PL	1	120	59.3	53.3	46.6	38.9	29.5	-	-	-	-	-	37.0
LGDRIS07-CP	3/4	0.90	CI	PL	1	120	63.9	58.9	53.5	47.5	40.6	32.3	20.9	-	-	-	42.0
LGDRIS1-CP	1	0.90	CI	PL	1	120	-	63.2	58.4	53.2	47.4	40.9	33.3	23.7	-	-	48.0

Enclosure	RPM	Phase	Voltage	HP	S.F.	S.F. Amps			Imp. Dia.	Order No.	Model No.	Wt. (lbs)
						115	230	460				
ODP	3600	1	115/230	1/2	1.90	12.4	6.1	-	4.70	558255	LGDRIS05-CP	36
				3/4	1.65	14.8	7.3	-	5.00	558256	LGDRIS07-CP	39
				1	1.65	19.9	9.9	-	5.36	558257	LGDRIS1-CP	43

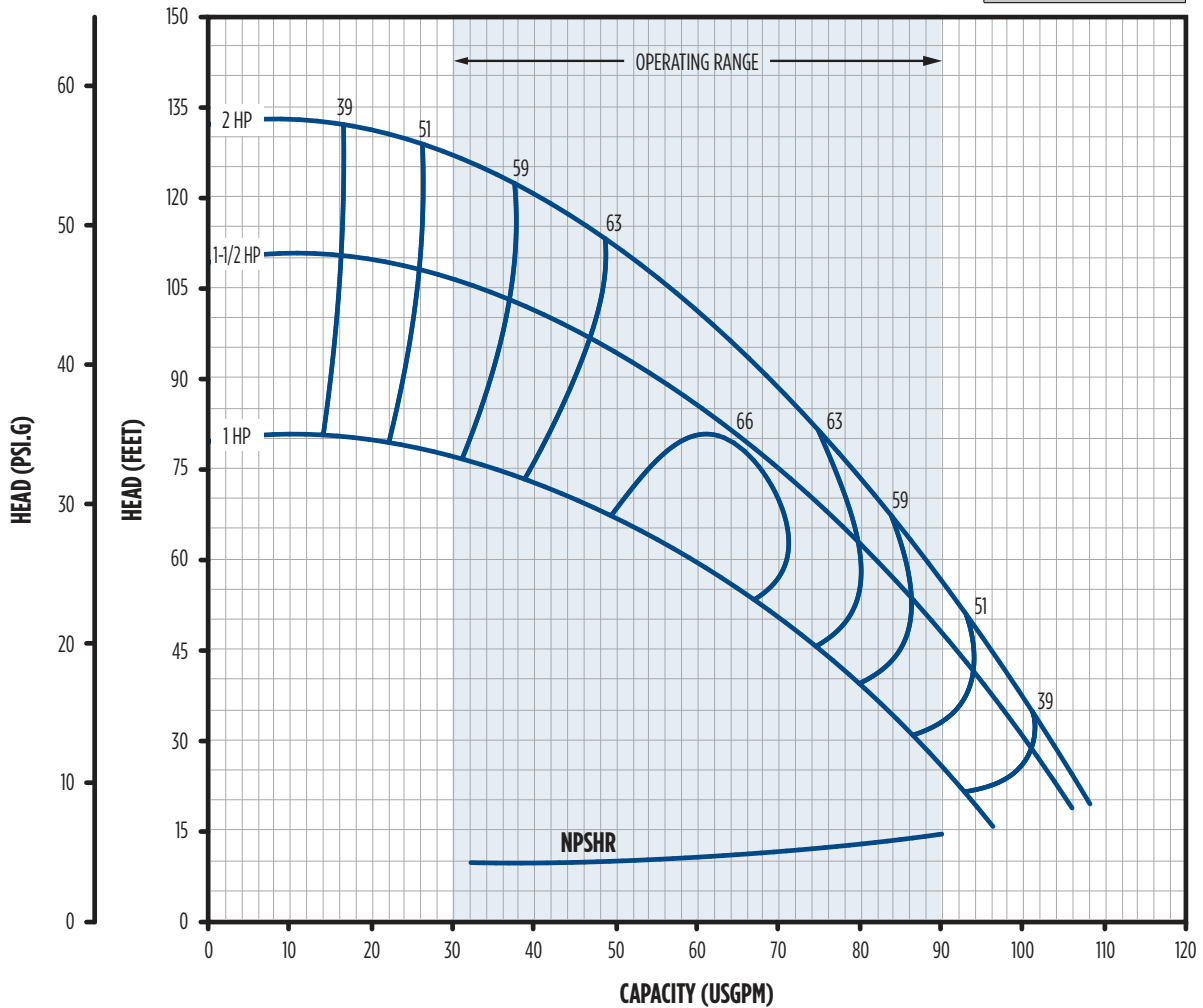
Volute	CI	Cast Iron, ASTM-A48, Class 30, 1-1/4" x 1"
Impeller	PL	Polyphenylene Ether Polystyrene Modified (PPE+PS 30%GF)
Mechanical Seal Types	1	Phenolic x Ceramic x Nitrile x SS
Motor Configurations	48Y	Square Flange with 1/2" threaded SS shaft, impeller mounts directly on motor shaft

LGDR2S-CS

PERFORMANCE

PEI_{CL} Number

0.83



LGDR2S-CS	HP	PEI	Volute	Impeller	Seal Type	Fluid Max °F	Capacity in GPM at Total Feet of Head Indicated										Max (PSI)
							30	40	50	60	70	80	90	100	110	120	
LGDR2S1-CS	1	0.83	CI	SS	1	120	86.6	78.7	69.8	59.2	45.4	-	-	-	-	-	34.5
LGDR2S15-CS	1-1/2	0.83	CI	SS	1	120	-	94.3	88.1	81.4	73.9	65.5	55.4	42.4	-	-	47.4
LGDR2S2-CS	2	0.83	CI	SS	1	120	-	-	93.3	87.8	82.0	75.7	68.8	61.0	51.9	40.5	57.3

Enclosure	RPM	Phase	Voltage	HP	S.F.	S.F. Amps			Imp. Dia.	Order No.	Model No.	Wt. (lbs)
						115	230	460				
ODP	3600	1	115/230	1	1.65	19.9	9.9	-	4.56	558258	LGDR2S1-CS	46
				1-1/2	1.47	24.0	12.1	-	5.25	558259	LGDR2S15-CS	46
				2	1.30	-	11.2	-	5.75	558260	LGDR2S2-CS	54

Volute	CI	Cast Iron, ASTM-A48, Class 30, 1-1/2" x 1-1/4"
Impeller	SS	Stainless Steel
Mechanical Seal Types	1	Phenolic x Ceramic x Nitrile x SS
Motor Configurations	48Y	Square Flange with 1/2" threaded SS shaft, impeller mounts directly on motor shaft

RL SERIES

APPLICATIONS

- For maintaining the water pressure in a residential water pump system when the pump is not running

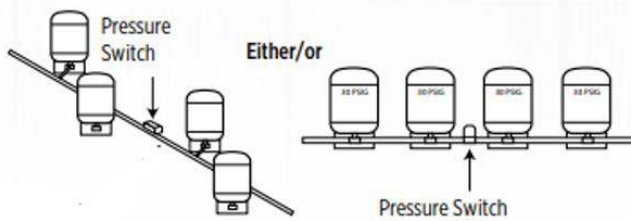
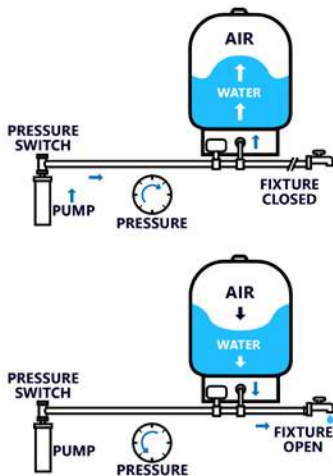
FEATURES

- Heavy-duty 20-gauge steel construction
- 304 Stainless Steel water connection with patented leak safe technology
- High-performance variable geometry Butyl Rubber diaphragm membrane
- Internal polypropylene liner
- Certified for safe, clean drinking water NSF/ANSI/CAN 61 and NSF/ANSI/CAN 372 approved
- Can be installed in series or in parallel for increased system capacity.



SERIES SPECIFICATIONS

Item No.	Model	Gallons	Type	Fixtures	Length	Height	Weight (lbs)	System Connect	Fitting Type
604652	RL2A	2.0	Inline	-	8.3	12.6	5.1	3/4" MNPT Straight	304 SS
604653	RL4A	4.5	Inline	-	11.0	15.4	8.4	3/4" MNPT Straight	304 SS
604629	RL6AH	6.0	Horizontal	1	16.9	13.4	11.2	3/4" MNPT Straight	304 SS
604693	RL14AH	14.0	Horizontal	4	21.3	17.7	24.7	3/4" MNPT Straight	304 SS
604687	RL14A	14.0	Vertical	4	15.7	24.4	23.6	1" FNPT Elbow	304 SS
604682	RL20A	20.0	Vertical	6	17.7	27.6	32.2	1" FNPT Elbow	304 SS
604683	RL34A	34.0	Vertical	11	17.7	41.7	51.1	1" FNPT Elbow	304 SS
604684	RL44A	44.0	Vertical	14	21.7	37.0	60.0	1-1/4" FNPT Elbow	304 SS
604641	RL81A	81.0	Vertical	27	21.7	58.7	101.2	1-1/4" FNPT Elbow	Carbon Steel



RL SERIES

TANK REPLACEMENT GUIDE

Flexcon				Amtrol				Misc.				
Little Giant	Challenger	Well-Rite	H2 Pro	Well-X-Trol	Wei-Flow	Champion	How 2 Tank	Goulds A.O. Smith	State Perma Tank	WellMate	Pro-Source	Standard Galvanized
RL2	PRJ6	PJR6	PJR6	WX-101	WF-6	CM1001	HT20	V6P	PIL-2	WM8L	-	5 gal
RL6H	PJR20S	PJR20S	PJR20S	WX105	N/A	N/A	N/A	N/A	N/A	WM25L	PS15-502	18 gal
RL21	PC66	WR60	WWT-20	WX-202	WF60	CM4202	HT20	V60	PAD-20	WM6	PS42T-T02	42 gal
RL34	PC122	WR120	WWT-35	WX-203	WF1100	CM8003	HT32	V100	WM9	WM9	PS82T-T05	82 gal
RL40	PC144	WR140	WWT-45	WX-250	WF140	CM10050	HT44	V140	WM14	WM14	PS120-T50	82 gal
RL62	PC211	WR200	WWT-65	WX-251	WF200	CM12051	HT44	V200	PAD-52	WM20	PS200-T51	220 gal
RL81	PC266	WR260	WWT-85	WX-302	WF260	CM17002	HT86	V250	PAD-86	WM25L	PS220-T52	220 gal
RL119	PC366	WR360	WWT-120	WX-350	WF360	CM22050	HT119	V350	PAD-119	WM35	-	315 gal

NOTE: Add "S" for horizontal models with pump stand; all models are 20 psi/1.9 bar pre-charge; maximum working pressure for all models is 125 psi/8.5 bar; maximum working temperature for all models is 140 ° F/60 ° C

DRAW DOWN FACTORS

Max. System Pressure (Cut-Out) PSIG (kPa) bar	Minimum System Pressure (Cut-In) - PSIG (kPa) bar														
	20 (138) 1.38	25 (-173) 1.72	30 (-207) 2.06	45 (-311) 3.1	50 (-345) 3.45	55 (-380) 3.8	60 (-414) 4.16	75 (518) 5.17	80 (552) 5.51	85 (587) 5.86	90 (621) 6.2	95 (656) 6.55	100 (690) 6.89	105 (725) 7.24	110 (759) 7.58
30 (207) 2.06	0.21														
35 (242) 2.41	0.28	0.19													
40 (276) 2.76	0.34	0.26	0.17												
45 (311) 3.10	0.39	0.32	0.24												
50 (345) 3.45	0.44	0.37	0.30												
55 (380) 3.80	0.47	0.41	0.34	0.14											
60 (414) 4.16	0.50	0.44	0.38	0.19	0.13										
65 (449) 4.48	0.53	0.48	0.42	0.24	0.18	0.12									
70 (483) 4.83	0.56	0.50	0.45	0.29	0.23	0.17	0.11								
75 (518) 5.17		0.53	0.48	0.32	0.27	0.22	0.16								
80 (552) 5.51			0.50	0.36	0.31	0.26	0.21								
85 (587) 5.86				0.39	0.34	0.29	0.24	0.10							
90 (621) 6.20				0.42	0.37	0.32	0.28	0.14	0.09						
95 (656) 6.55				0.44	0.40	0.35	0.31	0.18	0.13	0.09					
100 (690) 6.89					0.42	0.38	0.34	0.21	0.17	0.13	0.09				
105 (725) 7.24						0.41	0.37	0.25	0.20	0.16	0.13	0.08			
110 (759) 7.58							0.39	0.27	0.24	0.20	0.16	0.12	0.08		
115 (794) 7.92								0.30	0.26	0.23	0.19	0.15	0.11	0.08	
120 (828) 8.27								0.33	0.29	0.25	0.22	0.18	0.15	0.11	0.07
125 (863) 8.62								0.35	0.32	0.28	0.25	0.21	0.18	0.14	0.11

NOTE: In keeping with current industry standards, drawdown factors are based on Boyle's law; actual drawdowns will vary depending upon system variables, including the accuracy and operation of the pressure switch and gauge, actual precharge pressure and operating temperature of the system

TANK SIZING INFORMATION

There are three factors to consider when selecting the proper size for your water system:

- The pump delivery rate in gallons/liters per minute (gpm/lpm).
- The recommended minimum running time of the pump.
- The minimum (cut-in) and maximum (cut-out) system pressure parameters.

Once these factors are known, the following calculations will determine, in most cases, the correct model to meet your specifications.*

Calculating Drawdown

1. Pump delivery rate.
2. Desired minimum pump running time in minutes (1 minute, 45 seconds = 1.75 minutes).
3. Multiply line #1 by line #2. This is the minimum drawdown or available water volume required.*

_____ gpm/lpm
 _____ Minutes
 _____ Gallons/Liters

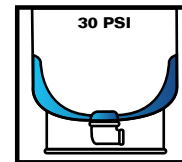
Calculating Tank Size

4. Minimum system pressure (cut-in).
5. Maximum system pressure (cut-out).
6. Using table #2, find the drawdown factor applicable to lines #4 and #5.
7. Divide line #3 by line #6 to determine the minimum total volume required.
8. Refer to the design data and select the model with the lowest total capacity that is greater than or equal to line #7.

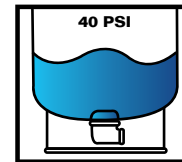
_____ PSIG/kPa/bar
 _____ PSIG/kPa/bar
 _____ Factor
 _____ Gallons/Liters
 _____ Model

Example: An application using an 8 gpm pump with a minimum run time of 1 minute and a 30/50 PSIG system pressure range:
 8 gpm x 1 minute / 0.30 (factor) = 2.67 gallon minimum tank capacity

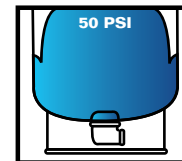
*If a volume of water needed is greater than the amount calculated on line #3, enter that amount on line #3 in place of the calculated volume.



Pump comes on and begins to fill tank.



Pump continues to run compressing air charge in tank.



Pump shuts off. Drawdown water is available on demand.

4" SUBMERSIBLE WELL PUMPS

4" SUBMERSIBLE WELL PUMPS

APPLICATIONS

- For both new installs and replacement applications where water must be transferred under pressure from wells, cisterns, ponds, lakes, and streams

FEATURES

- Designed for use in 4" and greater diameter water well applications
- Five performance ranges: 5, 8, 12, 16, and 22 gpm
- Horsepower ranges: 1/2 to 1.5
- NSF/ANSI 61 Certified construction for drinking water safe materials that are non-leaching and lead-free
- All stainless steel components are 300 series grade or better
- Industry-standard discharge head and NEMA motor connection bracket produced with proven, reliable, and durable materials. Available in 300 series stainless steel or engineered plastic resins.
- 1.25" NPT discharge pipe connection with sufficient wrench flat area allows for quick and easy installation
- Internal check valve integrated into each pump
- 100% factory performance tested
- Powered by Franklin Electric corrosion-resistant super stainless 4-inch submersible motors with lightning protection
- Maximum water temperature with the proper flow is 120 °F/49 °C. Consult the factory for details.



4" SUBMERSIBLE WELL PUMPS

SERIES SPECIFICATIONS - PLASTIC

Plastic												
GPM	HP	Stages	Volts	2-Wire				3-Wire				
				Pump Motor Assembly		For Replacement	Pump Motor Assembly		For Replacement	Quick Disconnect (QD) Control Box	Capacitor Run (CRC) Control Box	
				Model	Order No.	Motor	Model	Order No.	Motor	Order No.	Order No.	
5	1/2	8	115	W5G05S8-21P	559132	2445049004GS	-	-	-	-	-	-
	1/2	8	230	W5G05S8-22P	559133	2445050117GS	W5G05S8-32P	559170	2145059004GS	2801054915	2824055015	
	3/4	12	230	W5G07S12-22P	559134	2445079004GS	W5G07S12-32P	559171	2145079004GS	2801074915	2824075015	
8	1	15	230	W5G10S15-22P	559135	2445089003GS	W5G10S15-32P	559172	2145089003GS	2801084915	2824085015	
	1/2	7	115	W8G05S7-21P	559136	2445049004GS	-	-	-	-	-	
	1/2	7	230	W8G05S7-22P	559137	2445050117GS	W8G05S7-32P	559173	2145059004GS	2801054915	2824055015	
12	3/4	10	230	W8G07S10-22P	559138	2445079004GS	W8G07S10-32P	559174	2145079004GS	2801074915	2824075015	
	1	13	230	W8G10S13-22P	559139	2445089003GS	W8G10S13-32P	559175	2145089003GS	2801084915	2824085015	
	1/2	5	115	W12G05S5-21P	559140	2445049004GS	W12G05S5-31P	559176	2145049004GS	2801044915	-	
16	1/2	5	230	W12G05S5-22P	559141	2445050117GS	W12G05S5-32P	559177	2145059004GS	2801054915	2824055015	
	3/4	8	230	W12G07S8-22P	559142	2445079004GS	W12G07S8-32P	559178	2145079004GS	2801074915	2824075015	
	1	10	230	W12G10S10-22P	559143	2445089003GS	W12G10S10-32P	559179	2145089003GS	2801084915	2824085015	
22	1.5	13	230	W12G15S13-22P	559144	2443099004GS	W12G15S13-32P	559180	2243009203GS	2823008110*	2823008110	
	3/4	6	230	W16G07S6-22P	559145	2445079004GS	W16G07S6-32P	559181	2145079004GS	2801074915	2824075015	
	1	8	230	W16G10S8-22P	559146	2445089003GS	W16G10S8-32P	559182	2145089003GS	2801084915	2824085015	
22	1.5	11	230	W16G15S11-22P	559147	2443099004GS	W16G15S11-32P	559183	2243009203GS	2823008110*	2823008110	
	3/4	5	230	W22G07S5-22P	559148	2445079004GS	W22G07S5-32P	559184	2145079004GS	2801074915	2824075015	
	1	6	230	W22G10S6-22P	559149	2445089003GS	W22G10S6-32P	559185	2145089003GS	2801084915	2824085015	
	1.5	8	230	W22G15S8-22P	559150	2443099004GS	W22G15S8-32P	559186	2243009203GS	2823008110*	2823008110	

*Control Box, Standard.

4" SUBMERSIBLE WELL PUMPS

LittleGIANT®



SERIES SPECIFICATIONS - STAINLESS STEEL

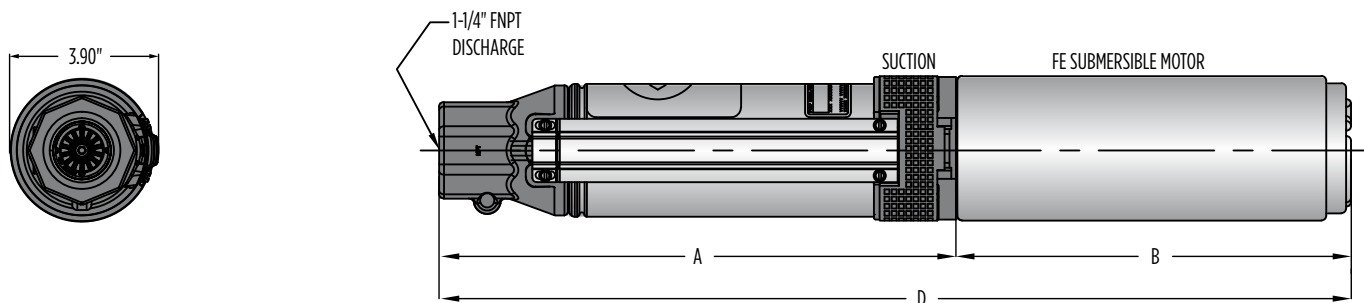
Stainless Steel											
GPM	HP	Stages	Volts	2-Wire			3-Wire				
				Pump Motor Assembly		For Replacement	Pump Motor Assembly		For Replacement	Quick Disconnect (QD) Control Box	Capacitor Run (CRC) Control Box
				Model	Order No.	Motor	Model	Order No.	Motor	Order No.	Order No.
5	1/2	8	115	W5G05S8-21S	559151	2445049004GS	-	-	-	-	-
	1/2	8	230	W5G05S8-22S	559152	2445050117GS	W5G05S8-32S	559187	2145059004GS	2801054915	2824055015
	3/4	12	230	W5G07S12-22S	559153	2445079004GS	W5G07S12-32S	559188	2145079004GS	2801074915	2824075015
	1	15	230	W5G10S15-22S	559154	2445089003GS	W5G10S15-32S	559189	2145089003GS	2801084915	2824085015
8	1/2	7	115	W8G05S7-21S	559155	2445049004GS	-	-	-	-	-
	1/2	7	230	W8G05S7-22S	559156	2445050117GS	W8G05S7-32S	559190	2145059004GS	2801054915	2824055015
	3/4	10	230	W8G07S10-22S	559157	2445079004GS	W8G07S10-32S	559191	2145079004GS	2801074915	2824075015
	1	13	230	W8G10S13-22S	559158	2445089003GS	W8G10S13-32S	559192	2145089003GS	2801084915	2824085015
12	1/2	5	115	W12G05S5-21S	559159	2445049004GS	W12G05S5-31S	559193	2145049004GS	-	-
	1/2	5	230	W12G05S5-22S	559160	2445050117GS	W12G05S5-32S	559194	2145059004GS	2801054915	2824055015
	3/4	8	230	W12G07S8-22S	559161	2445079004GS	W12G07S8-32S	559195	2145079004GS	2801074915	2824075015
	1	10	230	W12G10S10-22S	559162	2445089003GS	W12G10S10-32S	559196	2145089003GS	2801084915	2824085015
	1.5	13	230	W12G15S13-22S	559163	2443099004GS	W12G15S13-32S	559197	2243009203GS	2823008110*	2823008110
16	3/4	6	230	W16G07S6-22S	559164	2445079004GS	W16G07S6-32S	559198	2145079004GS	2801074915	2824075015
	1	8	230	W16G10S8-22S	559165	2445089003GS	W16G10S8-32S	559199	2145089003GS	2801084915	2824085015
	1.5	11	230	W16G15S11-22S	559166	2443099004GS	W16G15S11-32S	559200	2243009203GS	2823008110*	2823008110
22	3/4	5	230	W22G07S5-22S	559167	2445079004GS	W22G07S5-32S	559201	2145079004GS	2801074915	2824075015
	1	6	230	W22G10S6-22S	559168	2445089003GS	W22G10S6-32S	559202	2145089003GS	2801084915	2824085015
	1.5	8	230	W22G15S8-22S	559169	2443099004GS	W22G15S8-32S	559203	2243009203GS	2823008110*	2823008110

*Control Box, Standard.

4" SUBMERSIBLE WELL PUMPS

4" SUBMERSIBLE WELL PUMPS

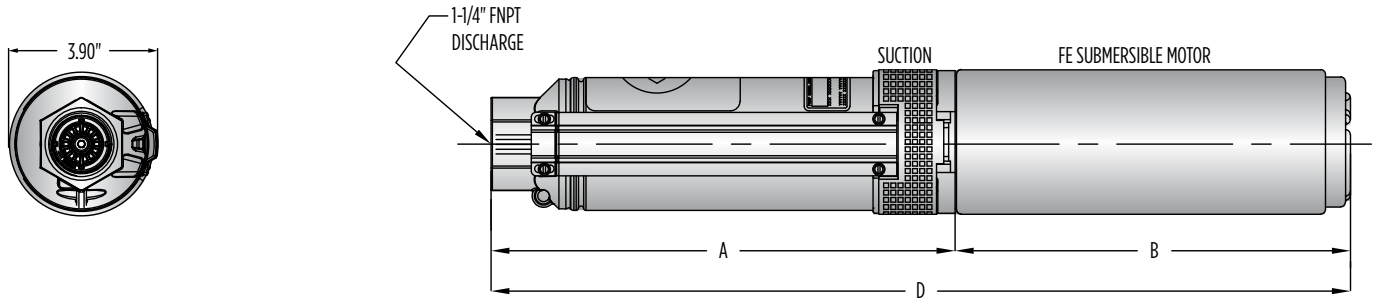
DIMENSIONS - PLASTIC DISCHARGE PUMP/MOTOR



Plastic Discharge Pump/Motor													
GPM	HP	Stages	2-Wire						3-Wire				
			Dimensions (in)			Wt. (lbs)			Dimensions (in)			Wt. (lbs)	
			A	B	C	PE	PMA	A	B	C	PE	PMA	
5	1/2	8	14.0	9.5	23.5	8	26	14.0	9.5	23.5	8	26	
	3/4	12	17.7	10.6	28.3	9	30	17.7	10.6	28.3	9	30	
	1	15	20.1	11.7	31.9	10	34	20.1	11.7	31.9	10	34	
8	1/2	7	13.3	9.5	22.8	7	25	13.3	9.5	22.8	7	25	
	3/4	10	15.7	10.6	26.4	8	29	15.7	10.6	26.4	8	29	
	1	13	18.4	11.7	30.1	10	34	18.4	11.7	30.1	10	34	
12	1/2	6	12.0	9.5	21.6	7	25	12.0	9.5	21.6	7	25	
	3/4	8	14.7	10.6	25.4	8	29	14.7	10.6	25.4	8	29	
	1	11	16.8	11.7	28.5	9	33	16.8	11.7	28.5	9	33	
	1.5	15	19.5	15.1	34.6	10	41	19.5	13.6	33.1	10	41	
16	3/4	6	14.9	10.6	25.5	7	28	14.9	10.6	25.5	7	28	
	1	9	17.3	11.7	29.0	8	32	17.3	11.7	29.0	8	32	
	1.5	11	21.0	15.1	36.1	9	40	21.0	13.6	34.6	9	40	
22	3/4	5	13.6	10.6	24.3	6	28	13.6	10.6	24.3	6	28	
	1	7	14.9	11.7	26.6	8	32	14.9	11.7	26.6	8	32	
	1.5	10	17.3	15.1	32.4	8	39	17.3	13.6	30.9	8	39	

4" SUBMERSIBLE WELL PUMPS

DIMENSIONS - STAINLESS STEEL DISCHARGE PUMP/MOTOR



Stainless Steel Discharge Pump/Motor												
GPM	HP	Stages	2-Wire					3-Wire				
			Dimensions (in)			Wt. (lbs)		Dimensions (in)			Wt. (lbs)	
			A	B	C	PE	PMA	A	B	C	PE	PMA
5	1/2	8	13.7	9.5	23.2	10	28	13.7	9.5	23.2	10	29
	3/4	12	16.9	10.6	27.6	12	33	16.9	10.6	27.6	12	33
	1	15	19.6	11.7	31.4	14	38	19.6	11.7	31.4	14	38
8	1/2	7	12.9	9.5	22.4	7	25	12.9	9.5	22.4	9	28
	3/4	10	15.3	10.6	26.0	10	31	15.3	10.6	26.0	10	31
	1	13	17.8	11.7	29.5	11	35	17.8	11.7	29.5	11	35
12	1/2	5	11.6	9.5	21.1	7	25	11.6	9.5	21.1	9	28
	3/4	8	14.3	10.6	25.0	10	31	14.3	10.6	25.0	10	31
	1	10	26.2	11.7	27.9	11	35	16.2	11.7	27.9	11	35
	1.5	13	18.9	15.1	34.0	14	45	18.9	13.6	32.5	14	42
16	3/4	6	14.5	10.6	25.1	10	31	14.5	10.6	25.1	9	30
	1	8	16.9	11.7	28.6	11	35	16.9	11.7	28.6	11	35
22	1.5	11	20.6	15.1	35.7	14	45	20.6	13.6	34.2	14	42
	3/4	5	13.2	10.6	24.9	7	29	13.2	10.6	24.9	7	29
	1	6	14.5	11.7	26.2	9	33	14.5	11.7	26.2	9	33
	1.5	8	16.9	15.1	32.0	10	41	16.9	13.6	30.5	10	41

4" SUBMERSIBLE WELL PUMPS



5 GPM

CAPACITIES IN GPM

Model	HP	PSI	Depth to Pumping Water Level (ft)																		Shut-Off (ft)			
			0	20	40	60	80	100	120	140	160	180	200	240	280	320	360	400	440	500		550	600	
W5G05	1/2	0										7	7	6	5	4								312
		10									7	7	6	6	4									
		20							7	7	7	6	6	5	4									
		30					7	7	7	6	6	5	4											
		40				7	7	7	6	6	5	4	3											
		50			7	7	7	6	6	5	4													
		60		7	7	6	6	5	5	4														
		70	7	7	6	6	5	5	3															
		80	7	6	6	5	4	3																
Shut-Off PSI			135	126	118	109	100	92	83	74	66	57	48	31	14									
W5G07	3/4	0												7	7	6	5	4	3				491	
		10												7	6	6	5	4						
		20											7	7	6	6	5	4	3					
		30										7	7	6	6	5	4							
		40									7	7	7	6	5	4	3							
		50							7	7	7	6	5	4	3									
		60						7	7	7	6	6	5	4										
		70					7	7	7	6	6	6	5	4	3									
		80				7	7	7	6	6	6	5	5	4										
Shut-Off PSI					187	178	169	161	152	143	135	126	109	91	74	57	39	22						
W5G1	1	0														7	7	6	5	5	4	3	609	
		10														7	7	6	6	5	4	4		
		20														7	7	6	5	4	3	3		
		30													7	7	6	6	5	4	3			
		40													7	6	6	5	4	3				
		50												7	7	6	5	5	4	3				
		60											7	7	6	6	5	4	3					
		70									7	7	7	7	6	5	4	4						
		80								7	7	7	7	6	6	5	4	3						
Shut-Off PSI								212	203	194	186	177	160	142	125	108	90	73	56	47	26			

NOTE: Performance shown does not include friction loss in the drop pipe; all performance data is based on rated motor nameplate voltage

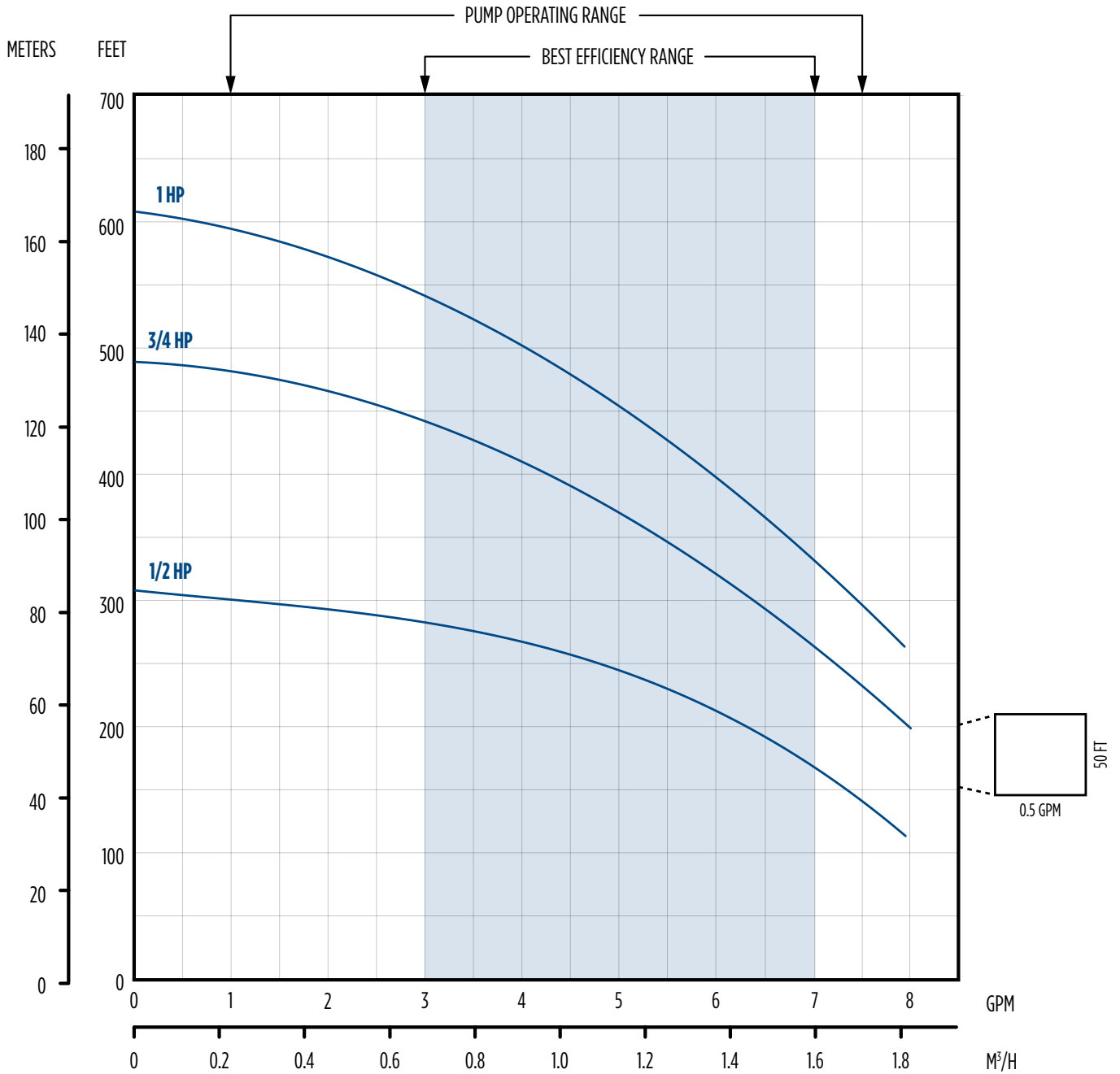
4" SUBMERSIBLE WELL PUMPS

LittleGIANT®

MENU

5 GPM

PERFORMANCE DATA



4" SUBMERSIBLE WELL PUMPS



8 GPM

CAPACITIES IN GPM

Model	HP	PSI	Depth to Pumping Water Level (ft)																		Shut-Off (ft)			
			0	20	40	60	80	100	120	140	160	180	200	240	280	320	360	400	440	500		550	600	
W8G05	1/2	0					13	13	12	11	10	9	8	6										282
		10				13	12	12	11	10	9	8	7											
		20			13	12	12	11	10	9	8	7												
		30		13	12	11	11	10	9	8	7													
		40	13	12	11	11	10	9	8	6														
		50	12	11	10	10	9	8	6															
		60	11	10	9	8	7	6																
		70	10	9	8	7	6																	
		80	9	8	7	6																		
Shut-Off PSI			122	113	105	96	87	79	70	61	53	44	35	18										
W8G07	3/4	0						13	13	13	12	12	11	10	9	7							406	
		10					13	12	12	11	11	10	9	8	6									
		20				13	13	12	12	11	11	10	10	8	7									
		30			13	13	12	12	11	11	10	10	9	8	6									
		40		13	13	12	12	11	11	10	10	9	8	7										
		50	13	13	12	12	11	11	10	9	9	8	7											
		60	13	12	12	11	11	10	9	9	8	7	6											
		70	12	12	11	10	10	9	9	8	7	6												
		80	11	11	10	10	9	8	8	7	6													
Shut-Off PSI			176	167	158	150	141	132	124	115	106	98	89	72	55	37								
W8G1	1	0								13	13	12	12	11	11	10	9	8	6				526	
		10						13	13	13	12	12	12	11	10	9	8	7						
		20					13	13	13	12	12	12	11	10	10	9	7	6						
		30				13	13	13	12	12	12	11	11	10	9	8	7	5						
		40			13	13	13	12	12	12	11	11	10	9	8	7	6							
		50		13	13	13	12	12	11	11	11	10	10	9	8	6								
		60	13	13	13	12	12	11	11	11	10	10	9	8	7	6								
		70	13	12	12	12	11	11	11	10	10	9	9	7	6									
		80	12	12	12	11	11	10	10	10	9	9	8	7										
Shut-Off PSI			228	219	210	202	193	184	176	167	158	150	141	124	106	89	72	55	37					

NOTE: Performance shown does not include friction loss in the drop pipe; all performance data is based on rated motor nameplate voltage

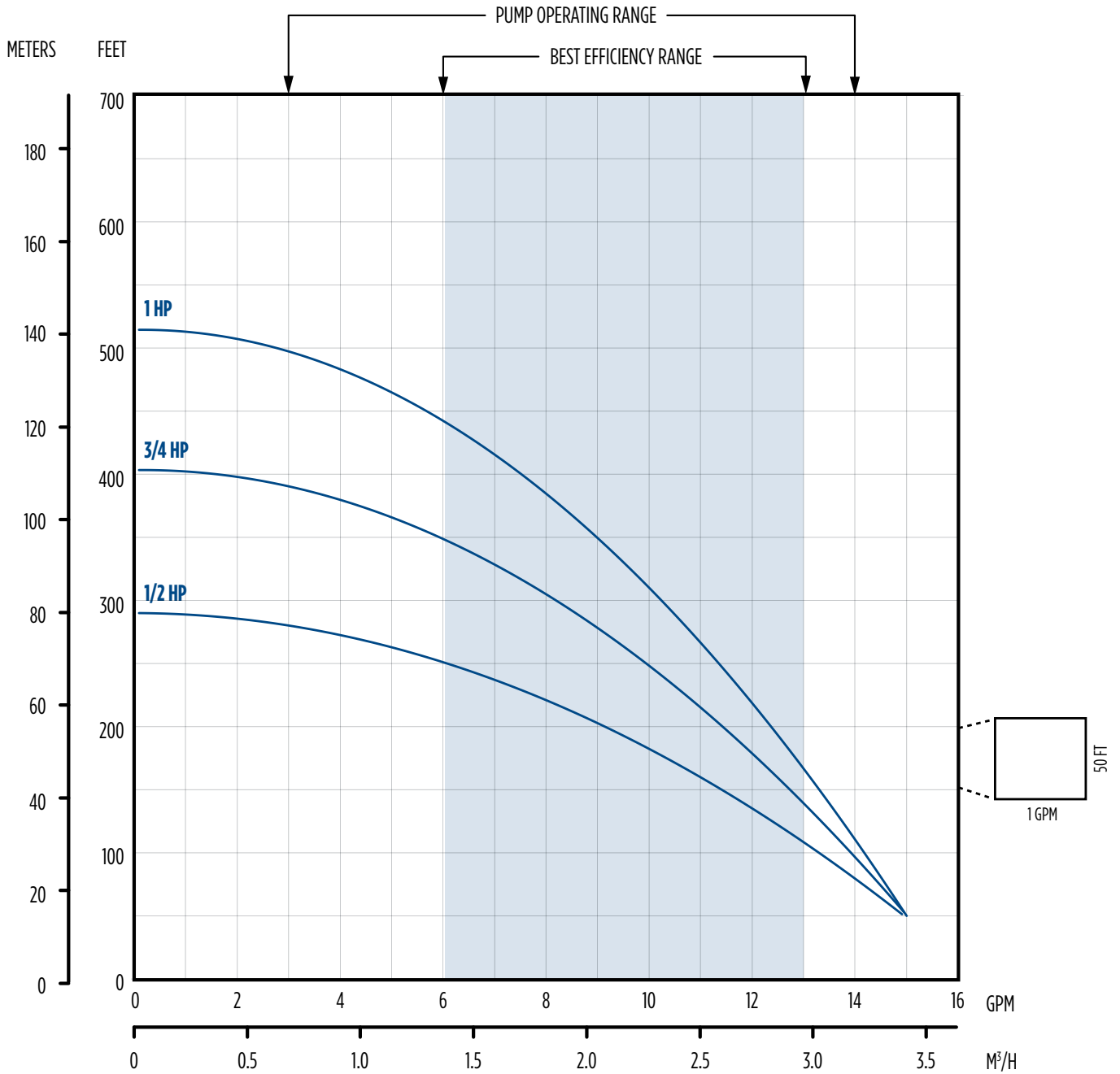
4" SUBMERSIBLE WELL PUMPS

LittleGIANT®

MENU

8 GPM

PERFORMANCE DATA



4" SUBMERSIBLE WELL PUMPS



12 GPM

CAPACITIES IN GPM

Model	HP	PSI	Depth to Pumping Water Level (ft)																		Shut-Off (ft)			
			0	20	40	60	80	100	120	140	160	180	200	240	280	320	360	400	440	500		550	600	
W12G05	1/2	0					16.3	14.9	13.3	11.6	9.5	6.9												212
		10				16.1	14.7	13.1	11.3	9.1	6.4													
		20			15.9	14.4	12.8	11.0	8.7															
		30		15.7	14.2	12.6	10.6	8.4																
		40	15.4	14.0	12.3	10.3	8.0																	
		50	13.7	12.0	10.0	7.5																		
		60	11.7	9.6	7.1																			
		70	9.3	6.6																				
		80																						
Shut-Off PSI			92	83	74	66	57	48	40	31	23	14												
W12G07	3/4	0							16.3	15.4	14.5	13.6	12.6	10.3	7.4								340	
		10						16.1	15.3	14.4	13.4	12.4	11.3	8.7										
		20					16.0	15.2	14.3	13.3	12.3	11.1	9.9	6.9										
		30				15.9	15.0	14.1	13.1	12.1	10.9	9.7	8.3											
		40			15.8	14.9	14.0	13.0	11.9	10.8	9.5	8.0												
		50		15.6	14.7	13.8	12.8	11.7	10.6	9.3	7.8													
		60	15.5	14.6	13.7	12.7	11.6	10.4	9.0	7.5														
		70	14.5	13.5	12.5	11.4	10.2	8.8	7.3															
		80	13.4	12.3	11.2	10.0	8.6	7.0																
Shut-Off PSI			147	139	130	121	113	104	95	87	78	69	61	43	26									
W12G1	1	0									16.2	15.5	14.8	13.3	11.6	9.5	6.9						421	
		10								16.1	15.4	14.7	14.0	12.3	10.4	8.1								
		20							16.0	15.3	14.6	13.8	13.0	11.3	9.1									
		30					16.5	15.9	15.2	14.5	13.7	12.9	12.0	10.1	7.6									
		40				16.4	15.8	15.1	14.4	13.6	12.8	11.9	11.0	8.7										
		50			16.3	15.7	15.0	14.2	13.5	12.7	11.8	10.8	9.7	7.2										
		60		16.2	15.6	14.9	14.1	13.4	12.5	11.6	10.6	9.6	8.4											
		70	16.1	15.4	14.8	14.0	13.2	12.4	11.5	10.5	9.4	8.1	6.7											
		80	15.3	14.6	13.9	13.1	12.2	11.3	10.3	9.2	7.9													
Shut-Off PSI			182	174	165	156	148	139	130	122	113	104	96	78	61	44	26							
W12G15	1.5	0											16.3	15.2	14.1	12.9	11.5	10.0	8.3				548	
		10											16.2	15.7	14.6	13.4	12.1	10.7	9.0	7.1				
		20											16.1	15.6	15.1	13.9	12.7	11.3	9.8	8.0				
		30										16.0	15.5	15.0	14.4	13.2	11.9	10.4	8.8	6.8				
		40									16.0	15.4	14.9	14.3	13.7	12.5	11.1	9.5	7.7					
		50					16.4	15.9	15.4	14.8	14.2	13.6	13.0	11.7	10.2	8.5								
		60				16.3	15.8	15.3	14.7	14.1	13.6	12.9	12.3	10.9	9.2	7.3								
		70			16.2	15.7	15.2	14.6	14.1	13.5	12.8	12.2	11.5	10.0	8.2									
		80		16.2	15.6	15.1	14.5	14.0	13.4	12.7	12.1	11.4	10.6	9.0	7.0									
Shut-Off PSI			237	229	220	211	203	194	185	177	168	159	151	133	116	99	81	64	47					

NOTE: Performance shown does not include friction loss in the drop pipe; all performance data is based on rated motor nameplate voltage

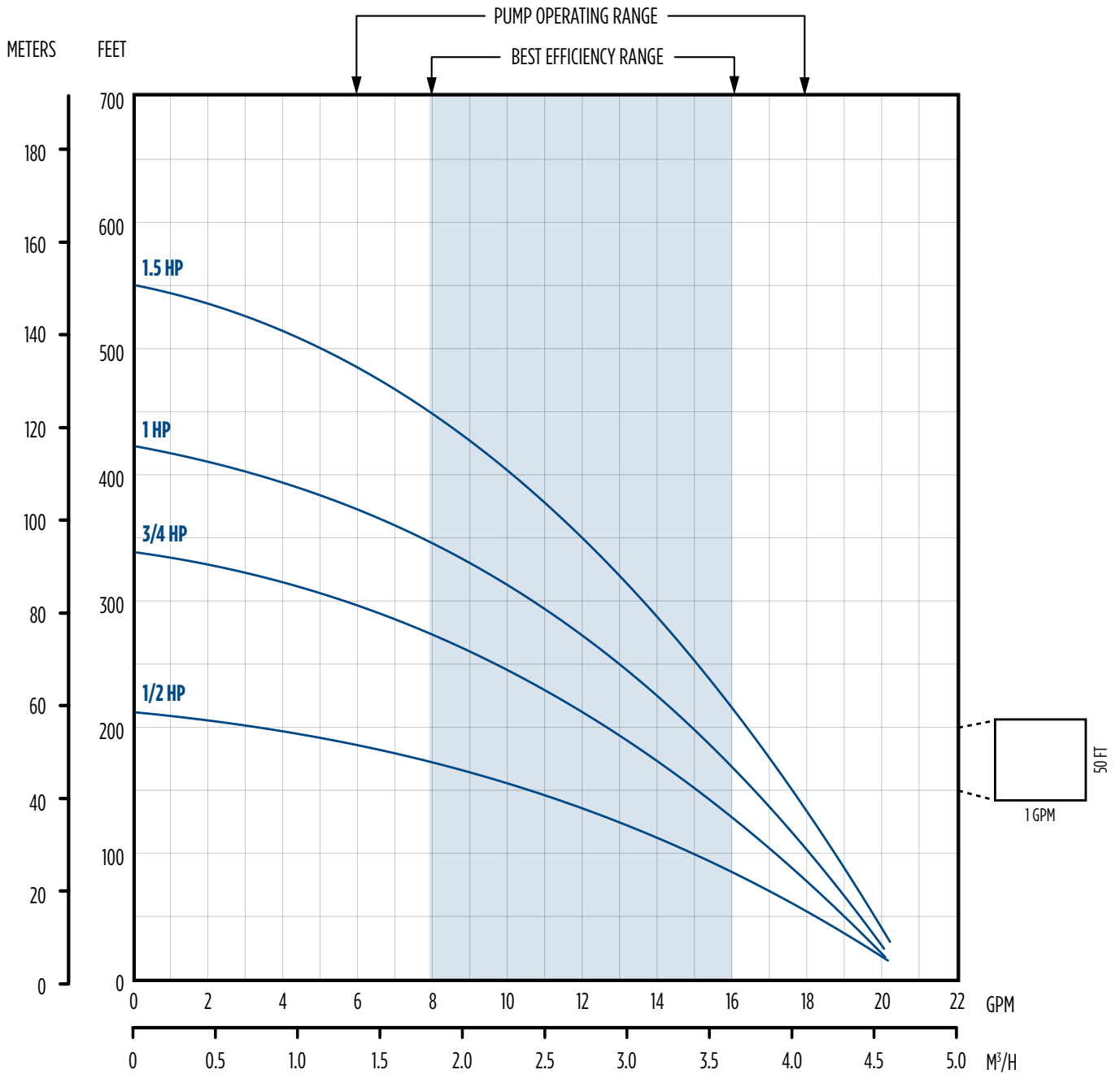
4" SUBMERSIBLE WELL PUMPS

LittleGIANT®

MENU

12 GPM

PERFORMANCE DATA



4" SUBMERSIBLE WELL PUMPS



16 GPM

CAPACITIES IN GPM

Model	HP	PSI	Depth to Pumping Water Level (ft)																		Shut-Off (ft)			
			0	20	40	60	80	100	120	140	160	180	200	240	280	320	360	400	440	500		550	600	
W16G07	3/4	0					25	23	21	19	16	13												216
		10				25	23	21	18	15	12													
		20			25	23	20	18	15	11														
		30		24	22	20	17	14	11															
		40	24	22	20	17	14	10																
		50	22	19	17	13																		
		60	19	16	13																			
		70	16	12																				
80	12																							
Shut-Off PSI			94	85	76	68	59	50	42	33	24	16												
W16G1	1	0					27	25	24	22	21	19	17	12									288	
		10					25	24	22	21	19	17	15											
		20				25	23	22	20	18	16	14	12											
		30			25	23	22	20	18	16	14	11												
		40		24	23	21	20	18	16	13	11													
		50	24	23	21	19	18	15	13	10														
		60	23	21	19	17	15	13																
		70	21	19	17	15	12																	
80	19	17	14	12																				
Shut-Off PSI			125	116	107	99	90	81	73	64	55	47	38	21										
W16G15	1.5	0								25	24	23	22	19	17	13							395	
		10								25	24	23	22	20	18	15	11							
		20							25	24	22	21	20	19	16	13								
		30					25	24	23	22	21	20	19	17	14	10								
		40			25	24	23	22	21	20	19	17	16	12										
		50		25	24	23	22	21	20	18	17	15	14											
		60	25	24	23	22	21	19	18	17	15	13	11											
		70	24	23	22	20	19	18	16	15	13	11												
80	23	21	20	19	18	16	15	13	11															
Shut-Off PSI			171	162	154	145	136	128	119	110	102	93	84	67	50	32								

NOTE: Performance shown does not include friction loss in the drop pipe; all performance data is based on rated motor nameplate voltage

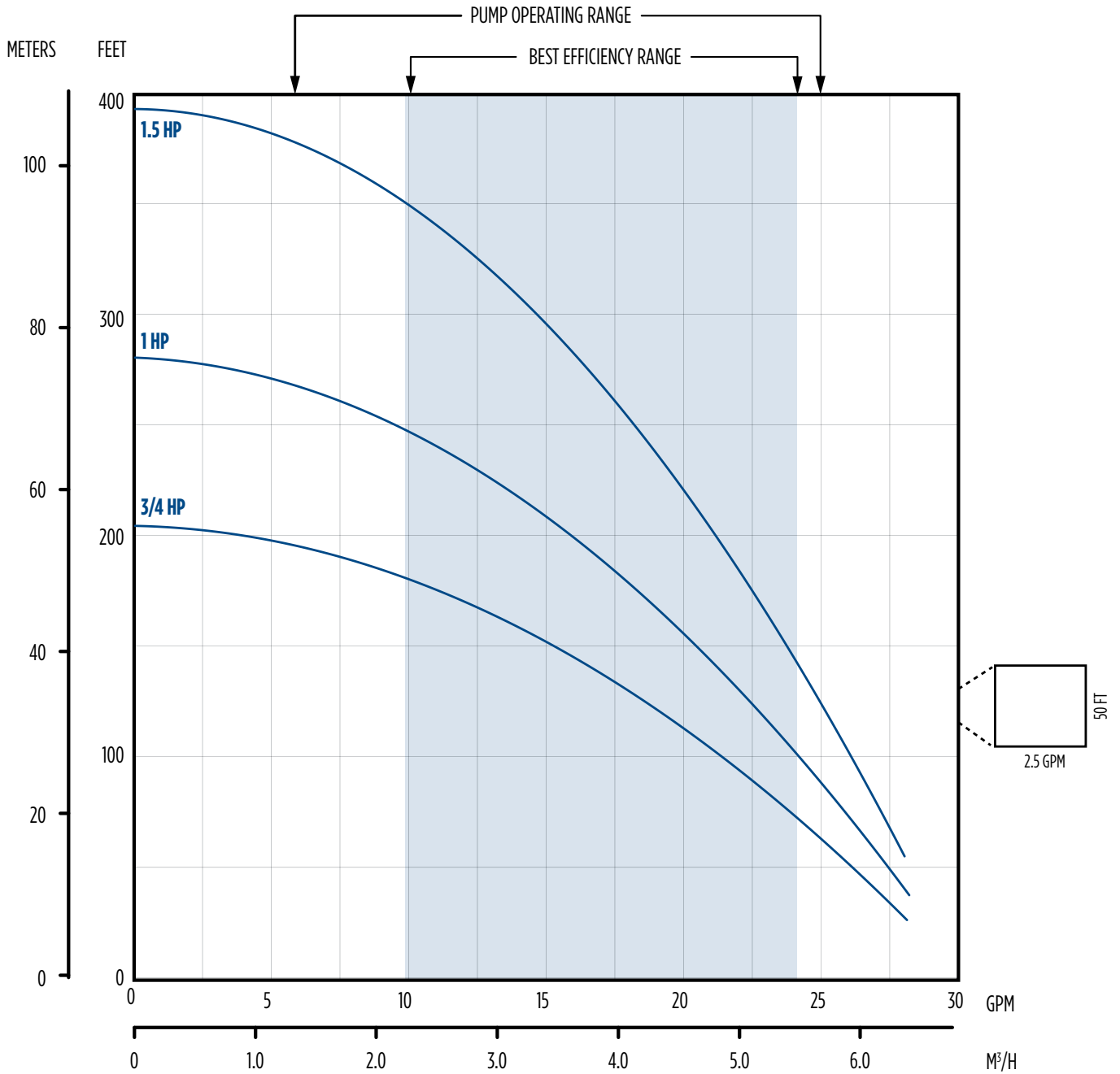
4" SUBMERSIBLE WELL PUMPS

LittleGIANT®

MENU

16 GPM

PERFORMANCE DATA



4" SUBMERSIBLE WELL PUMPS



22 GPM

CAPACITIES IN GPM

Model	HP	PSI	Depth to Pumping Water Level (ft)																		Shut-Off (ft)				
			0	20	40	60	80	100	120	140	160	180	200	240	280	320	360	400	440	500		550	600		
W22G07	3/4	0						29	26	22	18													188	
		10					28	25	22	17															
		20				28	25	21	16																
		30		30	27	24	21	16																	
		40	30	27	24	20																			
		50	27	23	19																				
		60	23	18																					
		70	18																						
		80																							
Shut-Off PSI			81	73	64	55	47	38	29	21	12														
W22G1	1	0						31	29	26	23	20	15											221	
		10					31	28	26	23	19														
		20				30	28	25	22	18															
		30			30	27	25	22	18																
		40		29	27	24	21	17																	
		50	29	27	24	20	16																		
		60	26	23	20																				
		70	23	19																					
		80	19																						
Shut-Off PSI			96	87	78	70	61	52	44	35	26	18	9												
W22G15	1.5	0								30	29	27	25	20										289	
		10								30	28	27	24	22	16										
		20								30	28	26	24	22	19										
		30								30	28	26	24	21	18	15									
		40					29	28	26	23	21	18													
		50				29	27	25	23	21	17														
		60		29	27	25	23	20	17																
		70	29	27	25	22	20	16																	
		80	26	24	22	19	16																		
Shut-Off PSI			125	116	108	99	90	82	73	65	56	47	39	21											

NOTE: Performance shown does not include friction loss in the drop pipe; all performance data is based on rated motor nameplate voltage

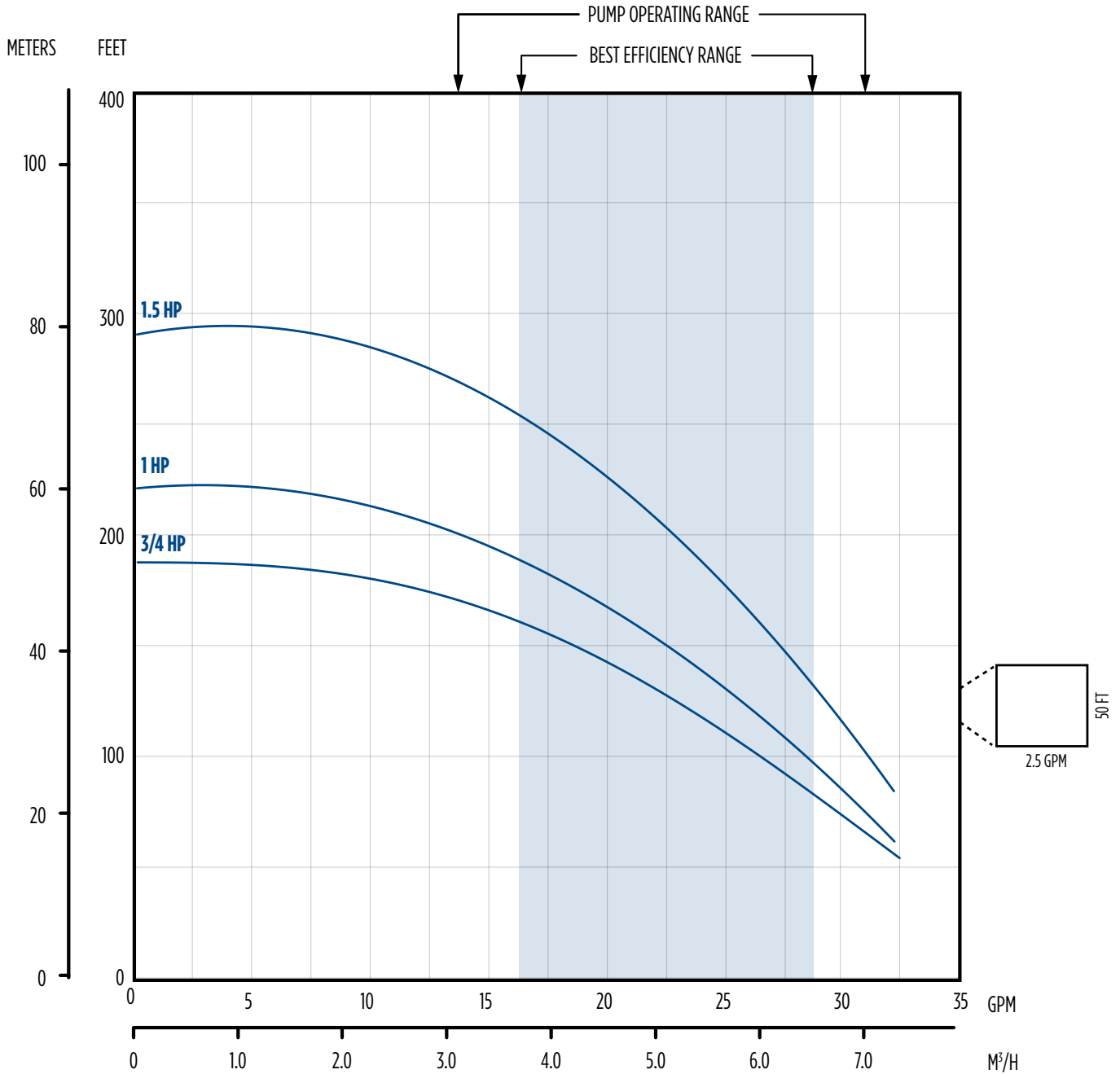
4" SUBMERSIBLE WELL PUMPS

LittleGIANT®

MENU

22 GPM

PERFORMANCE DATA



4" HIGH CAPACITY PUMPS

MENU

4" HIGH CAPACITY PUMPS

APPLICATIONS

- For both new installs and replacement applications where water must be transferred under pressure from wells, cisterns, ponds, lakes, and streams

FEATURES

- Four performance ranges: 35, 60, and 90 gpm
- 2" NPT discharge; Check valve must be ordered separately
- Stainless steel discharge head and motor bracket
- High flow hydraulic staging allows for maximum pump output, exceeds all energy efficiency standards, and provides increased product longevity
- Ceramic shaft sleeve and rubber discharge bearing eliminates sand wear
- Intermediate bearing for increased shaft stability when pump lengths dictate on high horse, high performance constructions
- Impeller eye and hub seals for improved performance and efficiency
- Stainless steel hex pump shaft, shell, and shaft coupling
- High capacity upthrust assembly for protection during start-up and operation (35, 60, and 90 gpm models)
- Designed for optimal performance when powered by Franklin's corrosion-resistant 4" submersible motors
- NSF/ANSI 61 Certified construction for drinking water safe materials



SERIES SPECIFICATIONS

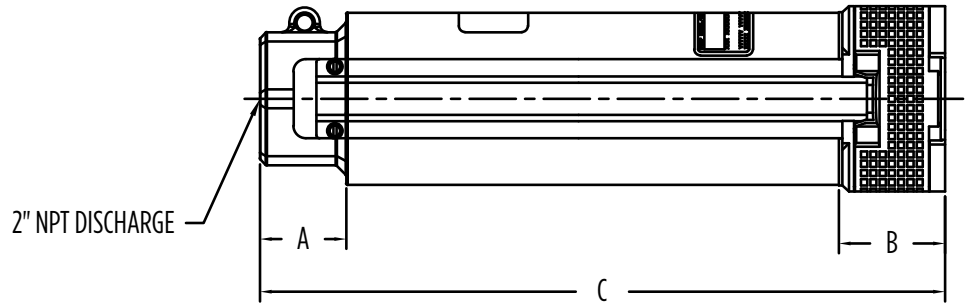
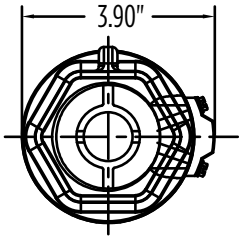
GPM	Item No.	Model	HP	Stages	Basic Model	PEI _{CL} Number	Dimensions (in) Pump End Only	Wt. (lbs)
35	558523	W35G10S05-PE	1	5	35S4	0.83	11.9	8
	558524	W35G15S07-PE	1-1/2	7			14.5	9
	558525	W35G20S09-PE	2	9			17	10
	558526	W35G30S12-PE	3	12			20.9	11
	558527	W35G50S20-PE	5	20			33.3	16
60	558528	W60G20S07-PE	2	7	60S4	0.94	23.5	10
	558529	W60G30S10-PE	3	10			33.3	12
	558530	W60G50S16-PE	5	16			48.8	18
	558531	W60G75S23-PE	7-1/2	23			68.8	25
	558532	W90G20S06-PE	2	6			23.4	10
90	558533	W90G30S08-PE	3	8	90S4	0.92	31.4	12
	558534	W90G50S13-PE	5	13			46.3	17
	558535	W90G75S19-PE	7-1/2	19			66.2	23
	558617	W90G10S25-PE	10	25			84.2	29

NOTE: All lengths are in inches. Discharge is 2" NPT; maximum diameter with cable guard is 3.90" (9.9 cm)

4" HIGH CAPACITY PUMPS



DIMENSIONS



GPM	Item No.	Model	Dimension "A"	Dimension "B"	Dimension "C"
35	558523	W35G10S05-PE	1.75" (4.4 cm)	2.15" (5.5 cm)	11.9"
	558524	W35G15S07-PE	1.75" (4.4 cm)	2.15" (5.5 cm)	14.5"
	558525	W35G20S09-PE	1.75" (4.4 cm)	2.15" (5.5 cm)	17"
	558526	W35G30S12-PE	1.75" (4.4 cm)	2.15" (5.5 cm)	20.9"
	558527	W35G50S20-PE	1.75" (4.4 cm)	2.15" (5.5 cm)	22.2"
60	558528	W60G20S07-PE	1.75" (4.4 cm)	2.15" (5.5 cm)	23.5"
	558529	W60G30S10-PE	1.75" (4.4 cm)	2.15" (5.5 cm)	33.3"
	558530	W60G50S16-PE	1.75" (4.4 cm)	2.15" (5.5 cm)	48.8"
	558531	W60G75S23-PE	1.75" (4.4 cm)	2.15" (5.5 cm)	68.8"
90	558532	W90G20S06-PE	1.75" (4.5 cm)	2.15" (5.5 cm)	23.4"
	558533	W90G30S08-PE	1.75" (4.5 cm)	2.15" (5.5 cm)	31.4"
	558534	W90G50S13-PE	1.75" (4.5 cm)	2.15" (5.5 cm)	46.3"
	558535	W90G75S19-PE	1.75" (4.5 cm)	2.15" (5.5 cm)	66.2"
	558617	W90G10S25-PE	1.75" (4.5 cm)	2.15" (5.5 cm)	84.2"

4" HIGH CAPACITY PUMPS



35 GPM

CAPACITIES IN GPM (LPM)

Model	HP	Stage	PSI	Depth to Pumping Water Level (Lift) in Feet (Meters). Shaded Areas Indicate Most Efficient Performance.																			Shut-Off ft (m)				
				0 (0)	20 (6.1)	40 (12.2)	60 (18.3)	80 (24.4)	100 (30.1)	120 (36.6)	140 (42.7)	160 (48.8)	180 (54.9)	200 (61)	240 (73.2)	280 (85.3)	320 (97.5)	360 (109.8)	400 (121.9)	440 (134.1)	480 (146.3)	500 (152.4)		550 (167.6)	600 (182.8)		
W35G10S05-PE	1	5	0					44	40	35	28														161		
			10				44	39	34	27																	
			20			43	39	33	25																		
			30		42	38	32	23																			
			40	42	37	31																					
			50	36	30																						
			60	29																							
Shut-Off PSI			70	61	52	44	35	26	18	9																	
W35G15S07-PE	1-1/2	7	0							43	41	37	33	28										230			
			10					46	43	40	37	32	27														
			20				45	43	40	36	32	26															
			30			45	42	39	35	31	24																
			40		44	42	39	35	30	23																	
			50	44	41	38	34	29	21																		
			60	41	37	33	28																				
			70	37	33	27																					
			80	32	26																						
Shut-Off PSI			100	91	82	74	65	56	48	39	30	22	13														
W35G20S09-PE	2	9	0							44	42	40	37	30									300				
			10							44	42	39	36	33	25												
			20					46	43	41	39	36	33	29													
			30				45	43	41	38	35	32	28	23													
			40			45	43	40	38	35	32	27	22														
			50		45	42	40	37	34	31	27	20															
			60	44	42	40	37	34	30	26																	
			70	42	39	37	33	30	25																		
			80	39	36	33	29	24																			
Shut-Off PSI			130	121	113	104	95	87	78	69	61	52	43	26													
W35G30S12-PE	3	12	0									45	44	40	37	32	25						400				
			10									45	43	42	38	34	28										
			20									45	43	42	40	36	31	23									
			30								44	43	41	40	38	33	27										
			40						44	43	41	39	37	35	30												
			50				45	44	42	41	39	37	35	32	26												
			60			45	44	42	41	39	37	34	32	29													
			70		45	44	42	40	38	36	34	31	28	24													
			80	45	43	42	40	38	36	34	31	28	23														
Shut-Off PSI			173	165	156	147	139	130	121	113	104	95	87	69	52	35	17										
W35G50S20-PE	5	20	0													44	42	40	38	36	34	30	24	650			
			10														44	42	40	37	34	32	28		20		
			20														44	42	40	38	35	32	30		25		
			30															45	43	41	39	36	33		28	21	
			40															45	44	42	40	37	35		32	25	
			50															45	44	42	41	38	36		33	29	22
			60															45	44	43	41	39	37		34	27	21
			70										45	44	43	42	40	38	35	32	29	24					
			80									45	44	43	42	41	39	37	34	30	26						
Shut-Off PSI									229	221	212	203	195	177	160	143	126	108	91	74	65	43	22				

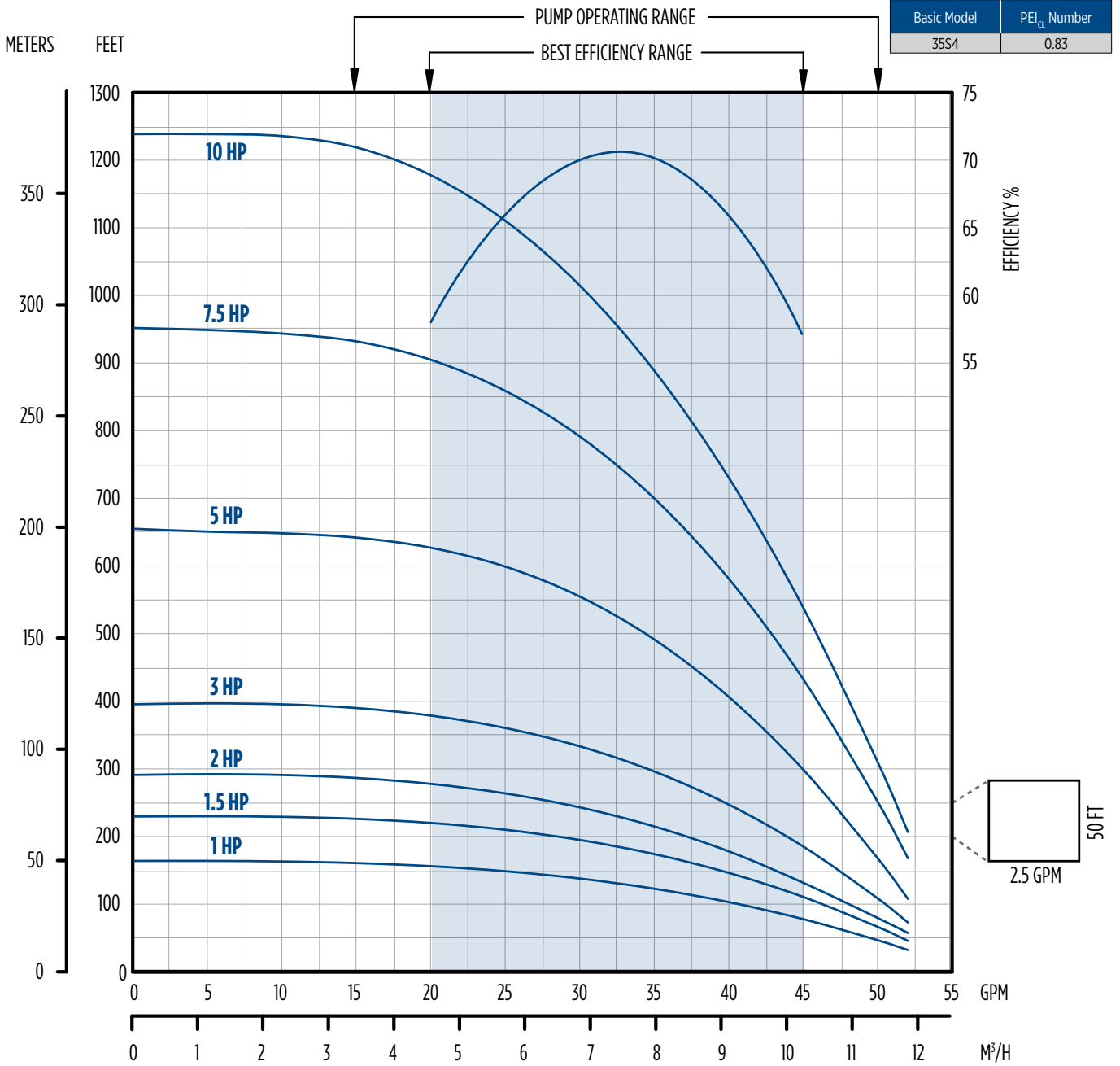
NOTE: Performance shown does not include friction loss in the drop pipe; all performance data is based on rated motor nameplate voltage

4" HIGH CAPACITY PUMPS



35 GPM

PERFORMANCE DATA



4" HIGH CAPACITY PUMPS



60 GPM

CAPACITIES IN GPM (LPM)

Model	HP	Stage	PSI	Depth to Pumping Water Level (Lift) in Feet (Meters). Shaded Areas Indicate Most Efficient Performance.																Shut-Off (ft)					
				0 (0)	20 (6.1)	40 (12.2)	60 (18.3)	80 (24.4)	100 (30.1)	120 (36.6)	140 (42.7)	160 (48.8)	180 (54.9)	200 (61)	240 (73.2)	280 (85.3)	320 (97.5)	360 (109.8)	400 (121.9)		440 (134.1)	480 (146.3)			
W60G20S07-PE	2	7	0				79	72	64	55	45											206			
			10			78	71	63	54	43															
			20		77	70	62	52	41																
			30	76	69	60	51																		
			40	68	59	49																			
			50	57	47																				
			60	45																					
Shut-Off PSI			89	81	72	63	55	46	37	29	15														
W60G30S10-PE	3	10	0				81	76	71	65	58	51	43									300			
			10			80	75	70	64	57	50	42													
			20			79	74	69	63	56	49	40													
			30	79	74	68	62	55	47	39															
			40	79	74	68	62	55	47	39															
			50	73	67	61	54	46	38	29															
			60	66	60	53	45																		
			70	59	52	44																			
Shut-Off PSI			130	121	113	104	95	87	78	69	61	52	43												
W60G50S16-PE	5	16	0						82	79	76	73	70	62	54	44						485			
			10						81	78	75	72	69	65	61	53	43								
			20						81	78	75	72	69	65	61	53	43								
			30				81	78	75	72	68	64	60	56	47										
			40			80	77	74	71	68	64	60	56	51	41										
			50		80	77	74	71	67	63	59	55	50	45											
			60	79	76	73	70	66	63	59	54	50	45	40											
			70	76	73	69	66	62	58	54	49	44	39												
Shut-Off PSI			210	201	193	184	175	167	158	149	141	132	123	106	89	71									
W60G75S23-PE	7-1/2	23	0										80	78	76	74	69	64	59	53	46	43		700	
			10										80	78	76	74	69	64	59	53	46	43			
			20										80	78	76	74	69	64	59	53	46	43			
			30									80	78	76	74	69	64	59	53	46	43				
			40								80	78	75	73	71	69	63	58	52	45	41				
			50				81	79	77	75	73	71	68	66	60	54	48	41							
			60			81	79	77	74	72	70	68	65	63	57	51	44								
			70		81	79	77	74	72	70	67	65	62	59	53	47	40								
Shut-Off PSI			303	294	286	277	268	260	251	242	234	225	216	199	182	165	147	130	113	95					

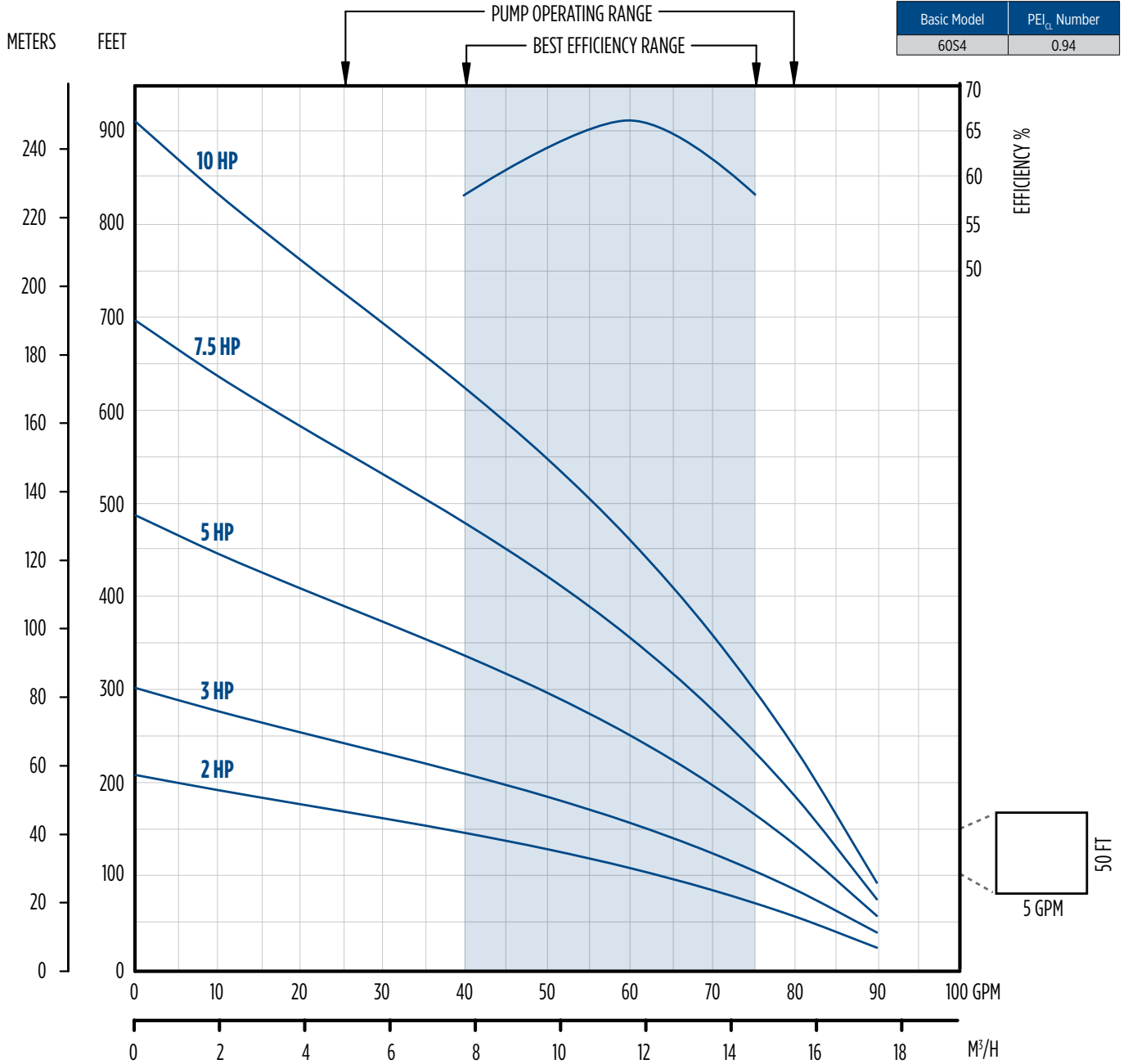
NOTE: Performance shown does not include friction loss in the drop pipe; all performance data is based on rated motor nameplate voltage

4" HIGH CAPACITY PUMPS

MENU

60 GPM

PERFORMANCE DATA



4" HIGH CAPACITY PUMPS



90 GPM

CAPACITIES IN GPM (LPM)

Model	HP	Stage	PSI	Depth to Pumping Water Level (Lift) in Feet (Meters). Shaded Areas Indicate Most Efficient Performance.															Shut-Off ft (m)		
				0 (0)	20 (6.1)	40 (12.2)	60 (18.3)	80 (24.4)	100 (30.1)	120 (36.6)	140 (42.7)	160 (48.8)	180 (54.9)	200 (61)	240 (73.2)	280 (85.3)	320 (97.5)	360 (109.8)			
W90G20S06-PE	2	6	0				104	89												170	
			10			102	86	67													
			20		100	83	64														
			30	97	80	60															
			40	77																	
Shut-Off PSI			74	65	56	48	39														
W90G30S08-PE	3	8	0					103	90	76										220	
			10				101	88	73												
			20		110	99	86	71													
			30	109	97	84	68														
			40	95	81	65															
			50	79	63																
Shut-Off PSI			95	87	78	69	61	52	43												
W90G50S13-PE	5	13	0							106	99	92	84	76						365	
			10						105	98	91	83	74	65							
			20				110	104	97	90	82	73	64								
			30			109	103	96	88	80	72	62									
			40		108	102	95	87	79	70	61										
			50	107	101	94	86	78	69	60											
			60	100	92	85	76	67													
			70	91	83	75	66														
Shut-Off PSI			158	149	141	132	123	115	106	97	89	80	71								
W90G75S19-PE	7-1/2	19	0								111	106	101	91	81	69			535		
			10								110	105	101	96	85	74	62				
			20								109	105	100	95	90	79	68				
			30							108	104	99	94	89	84	73	60				
			40					108	103	98	93	88	83	77	66						
			50				107	102	98	93	87	82	76	71							
			60		111	106	102	97	92	87	81	76	70	64							
			70	110	106	101	96	91	86	80	75	69	63								
Shut-Off PSI			232	223	214	206	197	188	180	171	162	154	145	128	110	93					
W90G10S25-PE	10	25	0								111	106	101	91	81	69			690		
			10								110	105	100	95	90	85	74	62			
			20								109	105	100	95	90	79	68				
			30							108	104	99	94	89	84	73	60				
			40					108	103	98	93	88	83	77	66						
			50				107	102	98	93	87	82	76	71							
			60			106	102	97	92	87	81	76	70	64							
			70	110	106	101	96	91	86	80	75	69	63								
Shut-Off PSI			299	290	281	273	264	255	247	238	229	221	212	195	177	160					

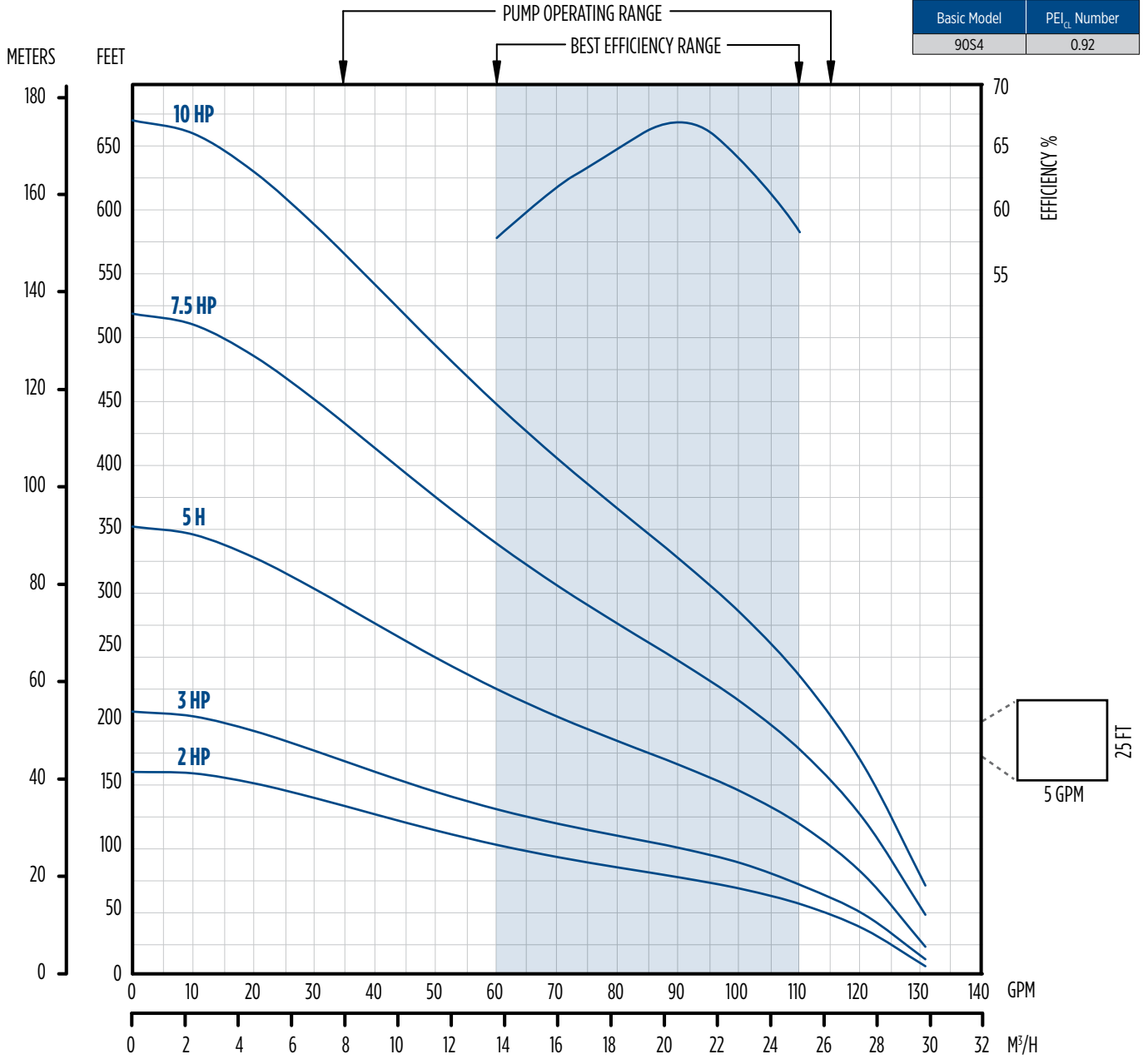
NOTE: Performance shown does not include friction loss in the drop pipe; all performance data is based on rated motor nameplate voltage

4" HIGH CAPACITY PUMPS

MENU

90 GPM

PERFORMANCE DATA



QD, STANDARD, & DELUXE

APPLICATIONS

- Quick Disconnect (QD) & Capacitor Run Control (CRC) - These control boxes are designed for use with Franklin 3-wire single-phase submersible motors through 1 hp.
- Standard and Deluxe - Designed for use with Franklin 3-wire, single-phase submersible motors from 1 through 15 hp, and are recommended for water systems that use pressure switches, level switches, or other pilot devices. Deluxe boxes contain magnetic line contractors carefully matched to the motor rating, eliminating the need for external line connectors.

FEATURES: ALL

- Suitable for outdoor mounting
- Capacitor start/run design (except QD boxes)
- UL Listed for US and Canada (60 Hz models)

FEATURES: STANDARD & DELUXE

- Heavy-duty, box-type terminals accept up to AWG #2 wire
- External access to overload resets
- Multiple-size knockouts
- User-friendly connection diagrams
- Easy access to grounding lugs



SERIES SPECIFICATIONS

Item No.	Model	HP	Volts	Hz	Wire	Weight (lbs)
2801044915	CB-1/2-115-60-Q	1/2	115	60	3	3
2801054915	CB-1/2-230-60-Q	1/2	230	60	3	3
2824055015	CB-1/2-230-60-CRC	1/2	230	60	3	5
2801074915	CB-3/4-230-60-Q	3/4	230	60	3	3
2824075015	CB-3/4-230-60-CRC	3/4	230	60	3	5
2801084915	CB-1-230-60-Q	1	230	60	3	3
2823008310	CB-1-230-60-D	1	230	60	3	7
2824085015	CB-1-230-60-CRC	1	230	60	3	5
2823008110	CB-1.5-230-60-S	1-1/2	230	60	3	7
2823008310	CB-1.5-230-60-D	1-1/2	230	60	3	7
2823018110	CB-2-230-60-S	2	230	60	3	7
2823018310	CB-2-230-60-D	2	230	60	3	7

Quick Disconnect Control Boxes (QD)			
Item No.	HP	Recommended Pump	
		Item No.	Model
2801054915	1/2	558554	W5G05S13-32P
	1/2	558561	W8G05S9-32P
	1/2	558569	W12G05S7-32P
	1/2	558578	W5G05S13-32S
	1/2	558585	W8G05S9-32S
	1/2	558593	W12G05S7-32S
2801074915	3/4	558555	W5G07S18-32P
	3/4	558562	W8G07S12-32P
	3/4	558570	W12G07S9-32P
	3/4	558579	W5G07S18-32S
	3/4	558586	W8G07S12-32S
	3/4	558594	W12G07S9-32S
2801084915	1	558563	W8G10S15-32P
	1	558571	W12G10S12-32P
	1	558574	W22G10S7-32P
	1	558580	W5G10S21-32S
	1	558587	W8G10S15-32S
	1	558595	W12G10S12-32S
	1	558598	W22G10S7-32S

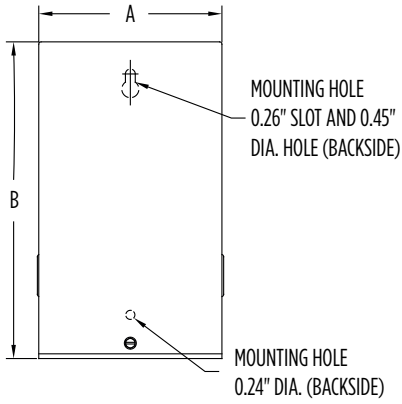
Capacitor Run Control Box (CRC)			
Item No.	HP	Recommended Pump	
		Item No.	Model
2824055015	1/2	558554	W5G05S13-32P
	1/2	558561	W8G05S9-32P
	1/2	558569	W12G05S7-32P
	1/2	558578	W5G05S13-32S
	1/2	558585	W8G05S9-32S
	-	-	-
2824075015	3/4	558555	W5G07S18-32P
	3/4	558562	W8G07S12-32P
	3/4	558570	W12G07S9-32P
	3/4	558579	W5G07S18-32S
	3/4	558586	W8G07S12-32S
	-	-	-
2824085015	1	558556	W5G10S21-32P
	1	558563	W8G10S15-32P
	1	558571	W12G10S12-32P
	1	558574	W22G10S7-32P
	1	558580	W5G10S21-32S
	1	558587	W8G10S15-32S
	1	558587	W8G10S15-32S
	1	558595	W12G10S12-32S
1	558598	W22G10S7-32S	

Standard Capacitor Start Capacitor Run Control Box			
Item No.	HP	Recommended Pump	
		Item No.	Model
2823008110	1-1/2	558572	W12G15S17-32P
		558596	W12G15S17-32S

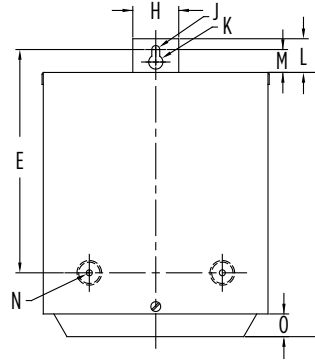
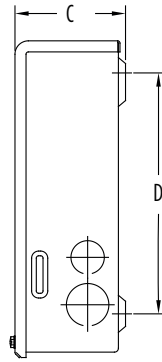
Deluxe Control Box			
Item No.	HP	Recommended Pump	
		Item No.	Model
2823008310	1		

QD, STANDARD, & DELUXE

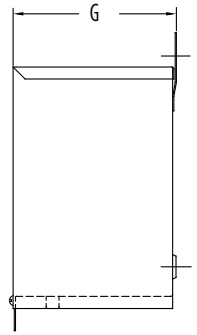
DIMENSIONS



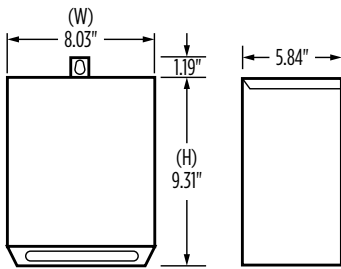
QUICK DISCONNECT AND CAPACITOR RUN CONTROL BOX



STANDARD CAPACITOR CAPACITOR RUN CONTROL BOX



A	B	C	D	E	F	G	H	J	K	L	M	N	O
4.81" (12.2 cm)	8.41" (21.4 cm)	2.84" (7.21 cm)	6.35" (16.1 cm)	7.88" (20.0 cm)	9.31" (23.6 cm)	5.84" (14.8 cm)	1.62" (4.1 cm)	R.14" (R.35 cm)	R.25" (R.63 cm)	1.19" (3.0 cm)	.81" (2.1 cm)	Ø.21 (Ø.53 cm)	.80" (2.0 cm)



DELUXE CONTROL BOX

SIDE

4" SUBMERSIBLE MOTORS

SERIES SPECIFICATIONS

4" 2-Wire Single-Phase							
Item No.	HP	kW	Volts	Hz	SF	Downward Thrust Rating	Weight lbs (kg)
2445029004GS	1/3	0.25	115	60	1.75	300	16 (7.26)
2445039004GS	1/3	0.25	230	60	1.75	300	16 (7.26)
2445059004GS	1/2	0.37	115	60	1.6	300	18 (8.2)
2445049004GS	1/2	0.37	230	60	1.6	300	18 (8.2)
2445079004GS	3/4	0.55	230	60	1.5	300	21 (9.5)
2445089003GS	1	0.75	230	60	1.4	650	24 (10.9)
2443099004GS	1-1/2	1.1	230	60	1.3	650	31 (14.1)

4" 3-Wire Single-Phase							
Item No.	HP	kW	Volts	Hz	SF	Downward Thrust Rating	Weight lbs (kg)
2145029004GS	1/3	0.25	115	60	1.75	300	17 (7.7)
2145039004GS	1/3	0.25	230	60	1.75	300	17 (7.7)
2145049004GS	1/2	0.37	115	60	1.6	300	19 (8.6)
2145059004GS	1/2	0.37	230	60	1.6	300	19 (8.6)
2145079004GS	3/4	0.55	230	60	1.5	300	21 (9.5)
2145089003GS	1	0.75	230	60	1.4	650	24 (10.9)
2243009203GS	1-1/2	1.1	230	60	1.3	650	28 (14.7)
2243019204GS	2	1.5	230	60	1.25	650	33 (15)

4" Three-Phase							
Item No.	HP	kW	Volts	Hz	SF	Downward Thrust Rating	Weight lbs (kg)
2345049203GS	1-1/2	1.1	200	60	1.3	650	29 (13.2)
2345149203GS	1-1/2	1.1	230	60	1.3	650	29 (13.2)
2345249403GS	1-1/2	1.1	460/380	60/50	1.3/1.0	650	28 (14.7)
2343059204GS	2	1.5	200	60	1.25	650	34 (15.4)
2343159204GS	2	1.5	230	60	1.25	650	34 (15.4)
2343259404GS	2	1.5	460/380	60/50	1.25/1.0	650	34 (15.4)
2343162604G	3	2.2	230	60	1.15	900	41 (18.6)
2343262604G	3	2.2	460/380	60/50	1.15/1.0	900	41 (18.6)
2343362604G	3	2.2	575	60	1.15	900	41 (18.6)
2343178602G	5	3.7	230	60	1.15	1500	56 (25.4)
2343278602G	5	3.7	460/380	60/50	1.15/1.0	1500	56 (25.4)
2343378602G	5	3.7	575	60	1.15	1500	56 (25.4)
2343188602G	7-1/2	5.5	230	60	1.15	1500	71 (32.2)
2343288602G	7-1/2	5.5	460/380	60/50	1.15/1.0	1500	71 (32.2)
2343388602G	7-1/2	5.5	575	60	1.15	1500	71 (32.2)



4" SUBMERSIBLE MOTORS

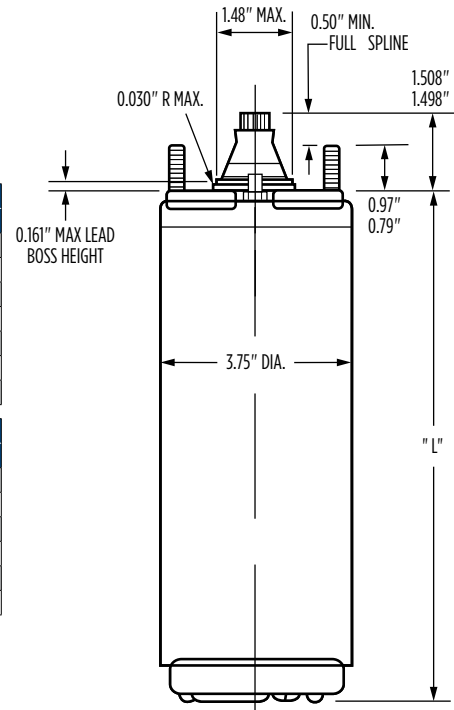
DIMENSIONS

HP	kW	"L" (in)	Shipping Weight		Motor Carton Size	
			lbs	kg	in	cm
1/3	0.25	8.76	16	7.3	4.25 x 4.375 x 16	10.8 x 11.1 x 40.6
1/2	0.37	9.51	18	8.2	4.25 x 4.375 x 16	10.8 x 11.1 x 40.6
3/4	0.55	10.64	21	9.5	4.25 x 4.375 x 19	10.8 x 11.1 x 48.3
1	0.75	11.73	24	10.9	4.25 x 4.375 x 19	10.8 x 11.1 x 48.3
1-1/2	1.1	15.12	31	14.1	4.25 x 4.375 x 21	10.8 x 11.1 x 53.3

HP	kW	"L" (in)	Shipping Weight		Motor Carton Size	
			lbs	kg	in	cm
1/3	0.25	8.76	17	7.7	4.25 x 4.375 x 16	10.8 x 11.1 x 40.6
1/2	0.37	9.51	19	8.6	4.25 x 4.375 x 16	10.8 x 11.1 x 40.6
3/4	0.55	10.64	21	9.5	4.25 x 4.375 x 19	10.8 x 11.1 x 48.3
1	0.75	11.73	24	10.9	4.25 x 4.375 x 19	10.8 x 11.1 x 48.3
1-1/2	1.1	13.62	28	12.7	4.25 x 4.375 x 21	10.8 x 11.1 x 53.3
2	1.5	15.12	33	15.0	4.25 x 4.375 x 21	10.8 x 11.1 x 53.3
3	2.2	19.04	41	18.6	4.25 x 4.375 x 21	10.8 x 11.1 x 53.3

HP	kW	"L" (in)	Shipping Weight		Motor Carton Size	
			lbs	kg	in	cm
1/2	0.37	9.51	18	8.2	4.25 x 4.375 x 16	10.8 x 11.1 x 40.6
3/4	0.55	10.64	21	9.5	4.25 x 4.375 x 16	10.8 x 11.1 x 40.6
1	0.75	11.73	24	10.9	4.25 x 4.375 x 19	10.8 x 11.1 x 48.3
1-1/2	1.1	11.73	24	10.9	4.25 x 4.375 x 19	10.8 x 11.1 x 48.3
2	1.5	13.62	28	12.7	4.25 x 4.375 x 21	10.8 x 11.1 x 53.3
3	2.2	16.04	35	15.9	4.25 x 4.375 x 21	10.8 x 11.1 x 53.3

HP	kW	"L" (in)	Shipping Weight		Motor Carton Size	
			lbs	kg	in	cm
1-1/2	1.1	18	37	16.8	6.5 x 6.25 x 21.50	16.5 x 15.9 x 54.6
2	1.5	19.12	44	20.0	6.5 x 6.25 x 24.25	16.5 x 15.9 x 61.6
3	2.2	20.2	44	20.0	6.5 x 6.25 x 24.25	16.5 x 15.9 x 61.6
5	3.7	23.2	56	25.4	6.5 x 6.25 x 27.25	16.5 x 15.9 x 69.2
7-1/2	5.5	29.2	71	32.2	6.5 x 6.25 x 33.25	16.5 x 15.9 x 84.5



GLOSSARY

TERMS

- **Air Volume Control:** Designed to maintain the air charge in a standard water storage tank. Pre-charged tanks do not require an air volume control.
- **Atmospheric Pressure:** A force exerted upon the earth's surface by the weight of air extending to a height of 25 miles above the earth. At sea level, 14.7 pounds per square inch (psi).
- **Centrifugal Force:** The force created by a spinning or rotating impeller resulting in the movement of water outward from the center point. A pump uses an impeller to create centrifugal force.
- **Check Valve:** Allows water to move in only one direction which prevents water from returning to its source.
- **Convertible Jet Pump:** For deep wells where pumping water levels are as far as 90 feet below the pump. Also easily converted for shallow wells where pumping water levels are no more than 25 feet below the pump. Jet packages must be purchased separately.
- **Cut-in Pressure Setting:** The point at which the pressure switch turns the pump on.
- **Deep Well:** Well with a depth to water greater than 25 feet.
- **Depth to Water:** The vertical measurement from pump level down to water level of water source. Pump height above water.
- **Discharge Pressure:** The amount of force, or pressure of the water being discharged from the pump.
- **Dual Voltage Motor:** Pump motor that can be operated on 115 or 230 Volts.
- **Foot Valve:** Installs on the end of pump suction pipe to prevent water from draining back to source. Includes strainer to minimize suction of debris into pump.
- **GPH:** Gallons per hour.
- **GPM:** Gallons per minute.
- **HP:** Horsepower (power of motor).
- **Jet Pump:** A centrifugal pump which requires a jet to help build additional water pressure.
- **Multi-Stage Jet Pump:** For use on deep wells only, with pumping water levels as far as 210 feet below the pump.
- **PSI:** Pounds per square inch. A volumetric pressure measure.
- **Pre-Charged Tank:** A water storage tank pre-charged with air at the factory featuring a rubber diaphragm to separate water from air which prevents waterlogging. This tank design provides greater drawdown than standard tanks. Pre-charged tanks do not require an air volume control.
- **Pressure:** A force usually expressed in pounds per square inch.
- **Pressure Switch:** The switch that automatically turns the pump on and off at specified pressures 30/50 psi and 40/60 psi. **IMPORTANT:** Always replace an old switch with a new switch that has the same pressure settings.
 - **30/50 Pressure Operation:** Pressure switch turns pump on at 30 psi and off at 50 psi.
 - **40/60 Pressure Operation:** Pressure switch turns pump on at 40 psi and off at 60 psi.
- **Priming the Pump:** The initial filling of a jet or centrifugal pump with water so that the air can be removed.
- **Pump Capacity:** The amount of water a pump is capable of moving at a given pressure.
- **Safety Relief Valve:** Required for all submersible pump and pressure boosting installations to prevent over-pressurization of water storage tank and system piping that could develop from pressure switch malfunction.
- **Shallow Well:** Well with a depth of water of 25 feet or less.
- **Shallow Well Pump:** For use on wells where pumping water levels are no more than 25 feet below the pump. Features a built-in jet.
- **Sizing:** Properly matching product to application for best performance.
- **Standard Tank:** A pressurized water storage tank where air comes in contact with water. Requires air volume control for proper operation.
- **Submersible Pump Control Box:** Installs above ground. Contains electrical starting components for three-wire submersible deep well pumps. Two-wire submersible deep well pumps do not use a control box.
- **Submersible Deep Well Pump:** For use on wells where pump water levels are up to 400 feet below point of use. Pump is submerged under water in the well.
- **Tank Drawdown:** The amount of usable water available from a water storage tank between pump stops and starts.
- **Waterlogging:** The absorption of air into water stored in a water storage tank which greatly reduces the amount of usable water drawdown available from the tank.
- **Water Storage Tank:** Stores air and water under pressure to provide for automatic pump operation and a source of water when pump is not running.

