

BALDOR® • RELIANCE 

Product Information Packet

XEFRPM28254

25HP,1800,460V,HL284T,TEFC,F1

Part Detail							
Revision:	E	Status:	PRD/A	Change #:		Proprietary:	No
Type:	AC	Elec. Spec:	LS7018A	CD Diagram:	422927-001	Mfg Plant:	
Mech. Spec:		Layout:	619696-001	Poles:	04	Created Date:	05-13-2016
Base:		Eff. Date:	06-27-2018	Leads:			

Specs			
Catalog Number:	XEFRPM28254		
Enclosure:	TEFC		
Frame:	HL284T		
Output @ Frequency:	25.000 HP @ 60 HZ		
Synchronous Speed @ Frequency:	1800 RPM @ 60 HZ		
Voltage @ Frequency:	460.0 V @ 60 HZ		
Agency Approvals:	CCSA US		
Auxillary Box:	No Auxillary Box		
Base Indicator:	Rigid		
Bearing Grease Type:	Polyrex EM (-20F +300F)		
Constant Torque Speed Range:	1-60		
Current @ Voltage:	25.200 A @ 460.0 V		
Duty Rating:	CONT		
Feedback Device:	NO FEEDBACK		
Frame Prefix:	HL		
Heater Indicator:	No Heater		
Insulation Class:	H		
IP Rating:	IP54		

KVA Code:	G		
Mounting Arrangement:	F1		
Product Family:	Fan		
Pulley End Bearing Type:	Ball		
Pulley Face Code:	Standard		
Shaft Ground Indicator:	No Shaft Grounding		
Shaft Rotation:	Reversible		
Motor Standards:	NEMA		
Thermal Device - Bearing:	NONE (OLD)		
Thermal Device - Winding:	Normally Closed Thermostat		







Nameplate 000613007QF												
	DUTY	HP	RPM	AMPS	VOLTS	HZ						
	CONT	25	1800	25.2	460	60						
CAT.NO.	XEFRPM28254		SPEC. NO.		H28-A000-0002							
SER.NO.			FRAME SIZE		HL284T		TYPE PSM					
AMB.	40	S.F.	1.15	ENCL.	TEFC	PH	3	DESIGN	B	CODE	G	
NEMA NOM. EFF	95.0		GUARANTEED EFFICIENCY		94.1		POWER FACTOR		95.4		INSUL. CLASS	H
D.E. BRG.	50BC03J30X		O.D.E. BRG.		45BC02J30X							
VPWM INVERTER DUTY @1.0SF	CHP HZ	60-90		CT HZ	1-60		VT HZ	0-60				
	X/T											

Nameplate 000692000VY		
IS	<input type="text"/>	MEAS OPEN CIRCUIT VOLTAGE
		VOLTS AT <input type="text"/>
		RPM.
EXCEED	L.R. <input type="text"/>	MTR PH CURRENT SHOULD NOT
		AMPS RMS PEAK TO
	AVOID DEMAGNETIZATION	

Parts List		
Part Number	Description	Quantity
WS312066	WS H28-A000-0002	1.000 EA
RA308291	RA H28-A000-0002	1.000 EA
411716004A	219P039 - 219P039 - LA	1.000 EA
000692000FP	NP, WARNING LIFT INSTRUCTIONS	1.000 EA
418057747A	METAL FASTENER	8.000 EA
000613007QF	NP,RPM AC - XE WITH CERTIFIED LOGO	1.000 EA
000613006ABP	RPM-XE,EXTREME EFFICIENCY,UL LISTED	1.000 EA
000692000VY	PERMANENT MAGNET MOTOR NAMEPLATE	1.000 EA
422927001	C/D LABEL	1.000 EA
004824007AB	PAINT,XT	0.100 EA
810102004AAC	BRKT,ODE,LSPM210 (FL210)	1.000 EA
810102003AAA	BRKT,DE,LSPM210 (FL210)	1.000 EA
HA4054	SHORT T-DRAIN FITTING, .125" N.P.T.	1.000 EA
HA4054	SHORT T-DRAIN FITTING, .125" N.P.T.	1.000 EA
004824015A	GREASE POLYREX EM	0.100 LB
415045002H	SLGR	1.000 EA
415045002G	SLGR	1.000 EA
400638001AB	WASHER SPRING - 210	1.000 EA
036610010AB	MHSLW M10 PLATED	4.000 EA
418150003A	GREASE FITTING CAP	2.000 EA
035000001A	ALFTG 1/8" 1610-BL	1.000 EA
035000001A	ALFTG 1/8" 1610-BL	1.000 EA
036100080KA	M10-1.50X 80MM HXSOCHDCS	3.000 EA
036100060JA	M8-1.25 X 60MM HXSOCHDCS	3.000 EA

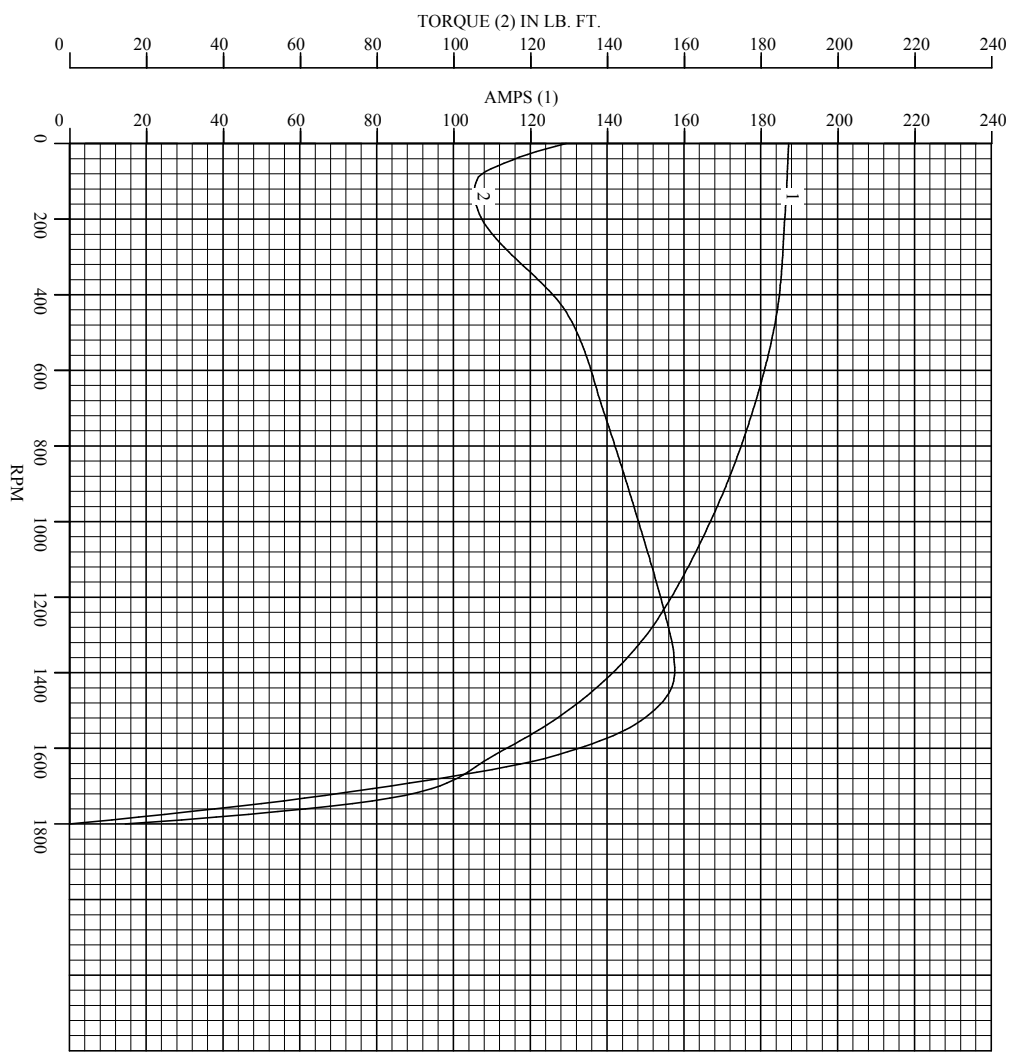
Parts List (continued)		
Part Number	Description	Quantity
036140001C	EYEBOLT - 400	2.000 EA
034693001AB	PPLG - G508- use 034692001AB	1.000 EA
034693001AB	PPLG - G508- use 034692001AB	1.000 EA
036500010AB	METRIC NUT M10-1.5PLTD400	4.000 EA
036500010AB	METRIC NUT M10-1.5PLTD400	4.000 EA
609830005H	TBOLT,M10-1.5 X 10.19	4.000 EA
415000103A	T/LUG #14AWG-#4AWG W/HOLE FOR .250 BOLT	1.000 EA
415072001B	CLAMP	1.000 EA
417733004T	GASKET CONDUIT BOX	2.000 EA
034180010DA	KEY 1/4X1/4X1-1/4L	1.000 EA
078546001G	FAN 180	1.000 EA
708533505A	COVER,FAN,HL280	1.000 EA
036000016KB	HHCSM10-1.5X16MM PLTD-280	4.000 EA
418018074A	GROUND LABEL G100 METRIC 160 D.C.	1.000 EA
406673002AE	2" CAP PLUG	1.000 EA
036620008AB	M6 METRIC EXT LOCKWASHER	1.000 EA
418010012J	SPACER 418010012X	1.000 EA
036601008AB	M6 FLAT WASHER	4.000 EA
075460062B	+C/B - 280	1.000 EA
075461011A	+CBOX CVR BLKT - 280	1.000 EA
065591000C	GASK 250-280	1.000 EA
032018008AK	HHCS 1/4-20X1 PLATED	2.000 EA
036000050HB	MHHCS M6X50MM PLATED	4.000 EA
034180027GA	KEY 1/2 SQ X 3.38"	1.000 EA

004824007K	SPECIAL PAINT	0.100 EA
------------	---------------	----------

S. O.	FRAME	HP	TYPE	PHASE	HERTZ	RPM
--	HL284T	25	PSM	3	60	1800
VOLTS	AMPS	DUTY	AMB°C	INSUL	S. F.	NEMA DESIGN
460	25.9	CONT	40	H	1.15	B
CODE LETTER	ENCL	ROTOR INERTIA (lb-ft ²)		STATOR RES. @ 25°C OHMS (BETWEEN LINES)		
G	TEFC	1.82		.4081		TYPICAL DATA
PERFORMANCE						
LOAD	HP	AMPERES	RPM	POWER FACTOR %	EFFICIENCY %	
NO LOAD	0	14.4	1800	3.90	N/A	
1/4	6.25	12.0	1800	53.5	91.4	
2/4	12.5	14.7	1800	83.9	94.6	
3/4	18.7	19.9	1800	92.8	95.1	
4/4	25.0	25.9	1800	95.2	95.0	
5/4	31.2	32.3	1800	95.7	94.6	
SPEED TORQUE						
		RPM	TORQUE (% FULL LOAD)	TORQUE (lb-ft)	AMPERES	
LOCKED ROTOR		0	177	129.2	187.1	
PULL OUT		1800	253	184.6	94.7	
FULL LOAD		1800	100	72.9	25.9	
THIS IS A PERMANENT MAGNET MOTOR						
GENERATED OPEN CIRCUIT LINE-LINE VOLTAGE at 25°C = 20.0 VOLTS PER 100 RPM						
REMARKS:						
		DR. BY	CAD			
		CK. BY	SEM			
		APP. BY	SEM			
		DATE	05/25/2016			
		LSPM MOTOR PERFORMANCE DATA		IS7018A	ISSUE DATE	05/25/2016
		A MEMBER OF THE ABB GROUP				

S. O.	--	HERTZ	60	AMB°C	40	CODE LETTER	G
FRAME	HL284T	RPM	1800	INSUL.	H	WK ² (lb-ft ²)	1.82
HP	25	VOLTS	460	S. F.	1.15	NEMA DESIGN	B
TYPE	PSM	AMPS	25.9	ENCL.	TEFC	STATOR RES. @ 25°C	.4081
PHASE	3	DUTY	CONT			OHMS (BETWEEN LINES)	

**Amps & Torque vs. RPM
During Acceleration**



Typical Data

BALDOR
A MEMBER OF THE ABB GROUP

DR. BY	CAD
CR. BY	RHM
APP. BY	RHM
DATE	05/25/2016

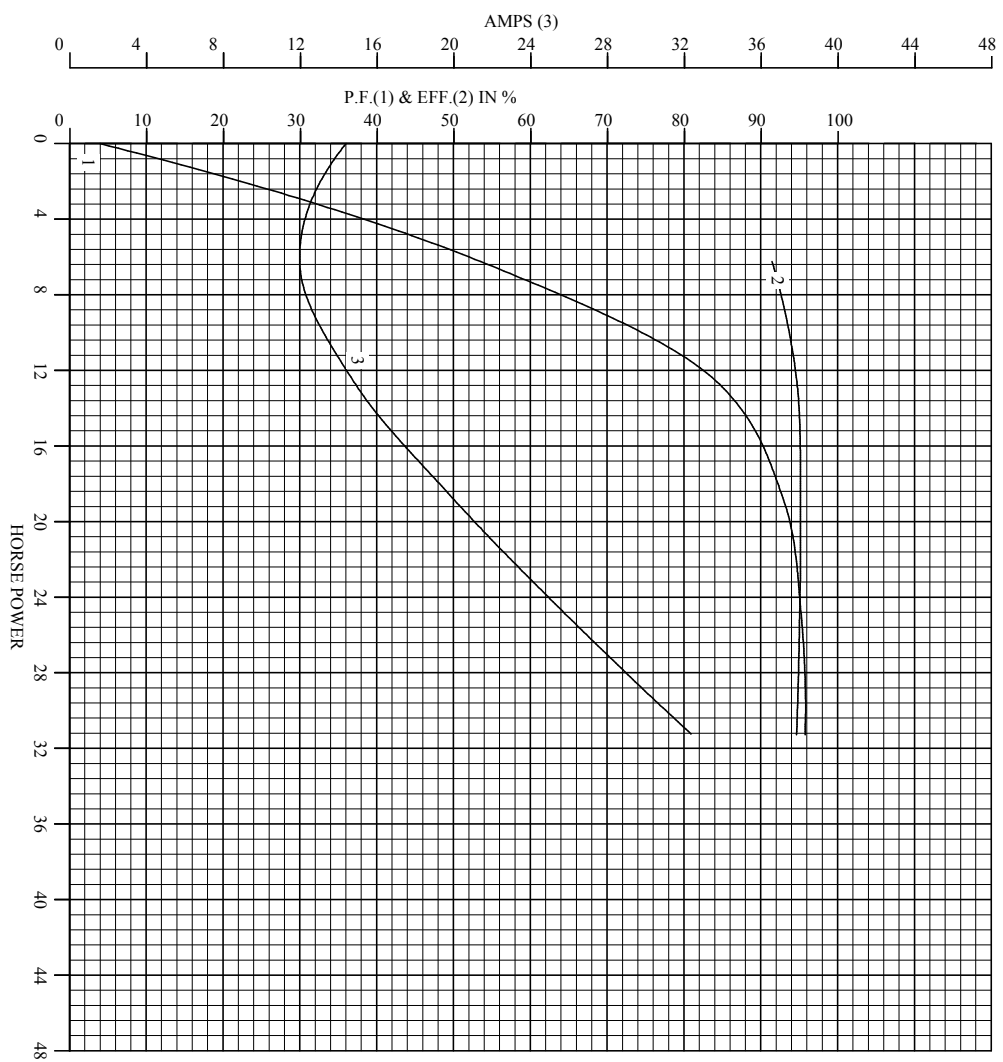
**ISPM MOTOR
PERFORMANCE
CURVES**

ISSUE DATE

LS7018A

S. O.	--	HERTZ	60	AMB°C	40	CODE LETTER	G
FRAME	HL284T	RPM	1800	INSUL	H	WR ² (lb-ft ²)	1.82
HP	25	VOLTS	460	S.F.	1.15	NEMA DESIGN	B
TYPE	PSM	AMPS	25.9	ENCL	TEFC	STATOR RES. @ 25°C	.4081
PHASE	3	DUTY	CONT			OHMS (BETWEEN LINES)	

Performance Data vs. HP
At Synchronous Speed



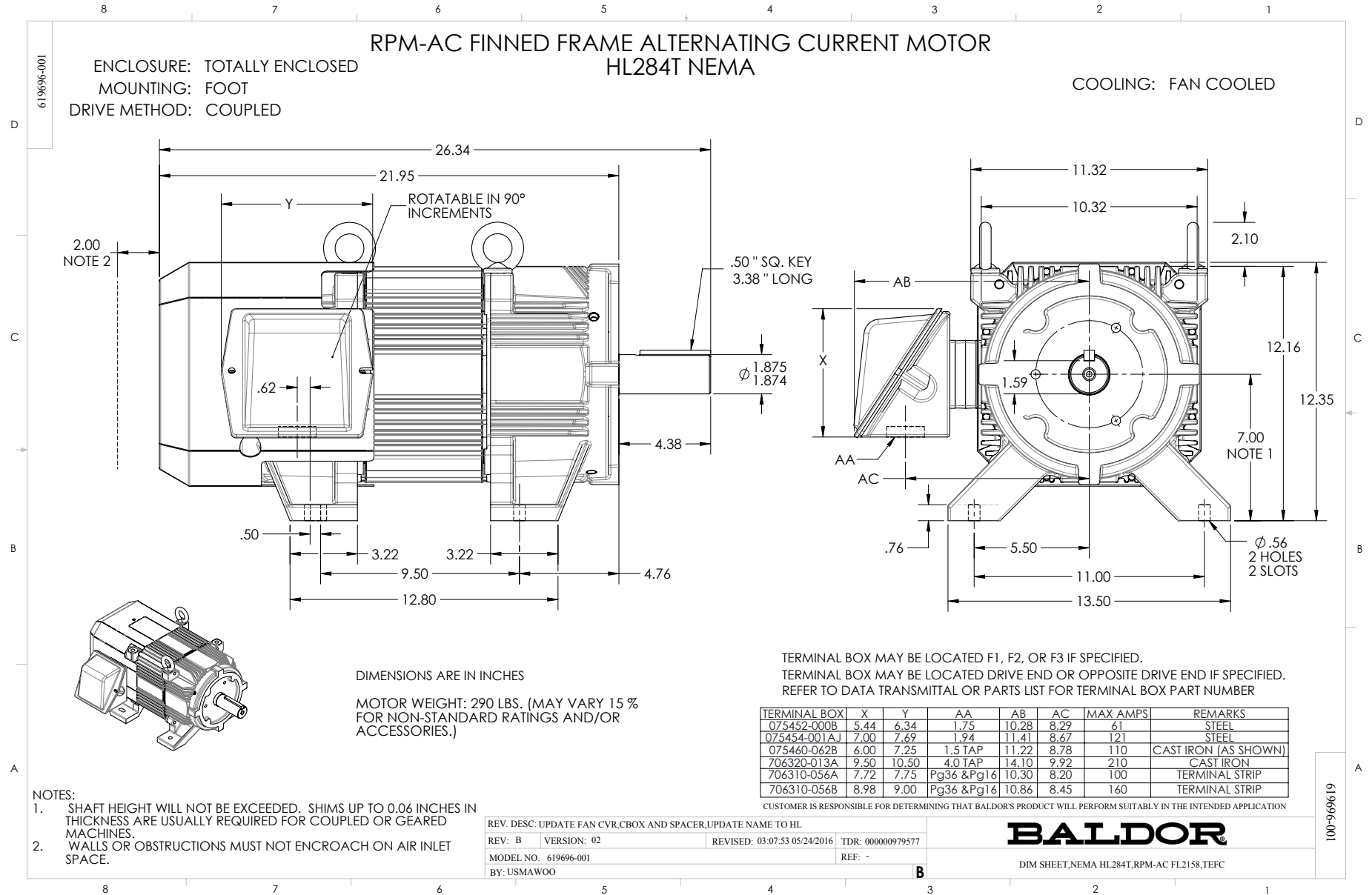
TYPICAL DATA

BALDOR
A MEMBER OF THE ABB GROUP

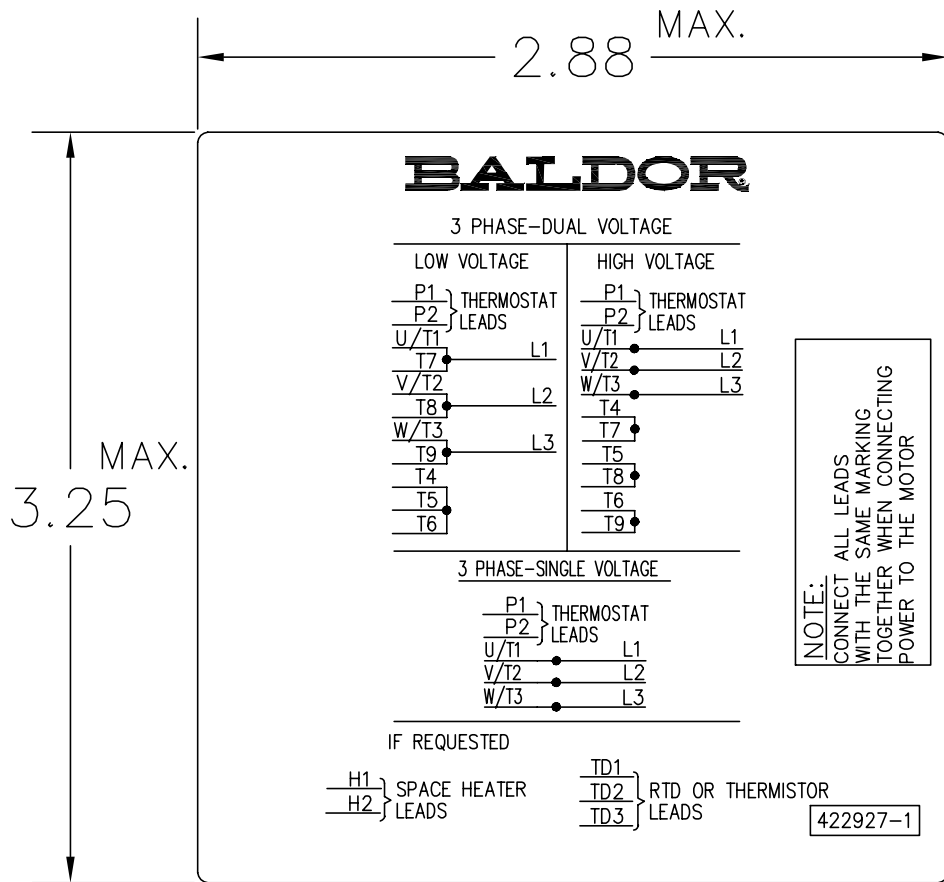
DR. BY CAD
CR. BY RHM
APP. BY RHM
DATE 05/25/2016

ISPM MOTOR
PERFORMANCE
CURVES

ISSUE DATE
L57018A
05/25/2016



422927-001



NOTE:
DATA TO BE SIZED
SO THAT IT FITS INTO
MATERIAL DECAL
DIMENSIONS. MAKE
LETTERS & NUMBERS
AS LARGE AS POSSIBLE.

MATERIAL: CERAMATIC DGF-P4
PERMA GRIP ADHESIVE

ALL LETTERS, NUMBERS
AND LINES TO BE BLACK
ON WHITE BACKGROUND.

422927-001

REV. DESC: CHANGE BACKGROUND COLOR FROM GOLD TO WHITE		
REV. LTR: B	VERSION: 02	TDR: 000000788708
FILE: \RGG\00000\203	REVISED: 08:09:29 03/04/2013	
MTL: -	BY: RGGWT	

BALDOR

EXTERNAL CONNECTION LABEL

SH 1 of 1

Marketing maintained PDF of MN442:

<http://www.baldor.com/mvc/DownloadCenter/Files/mn442>