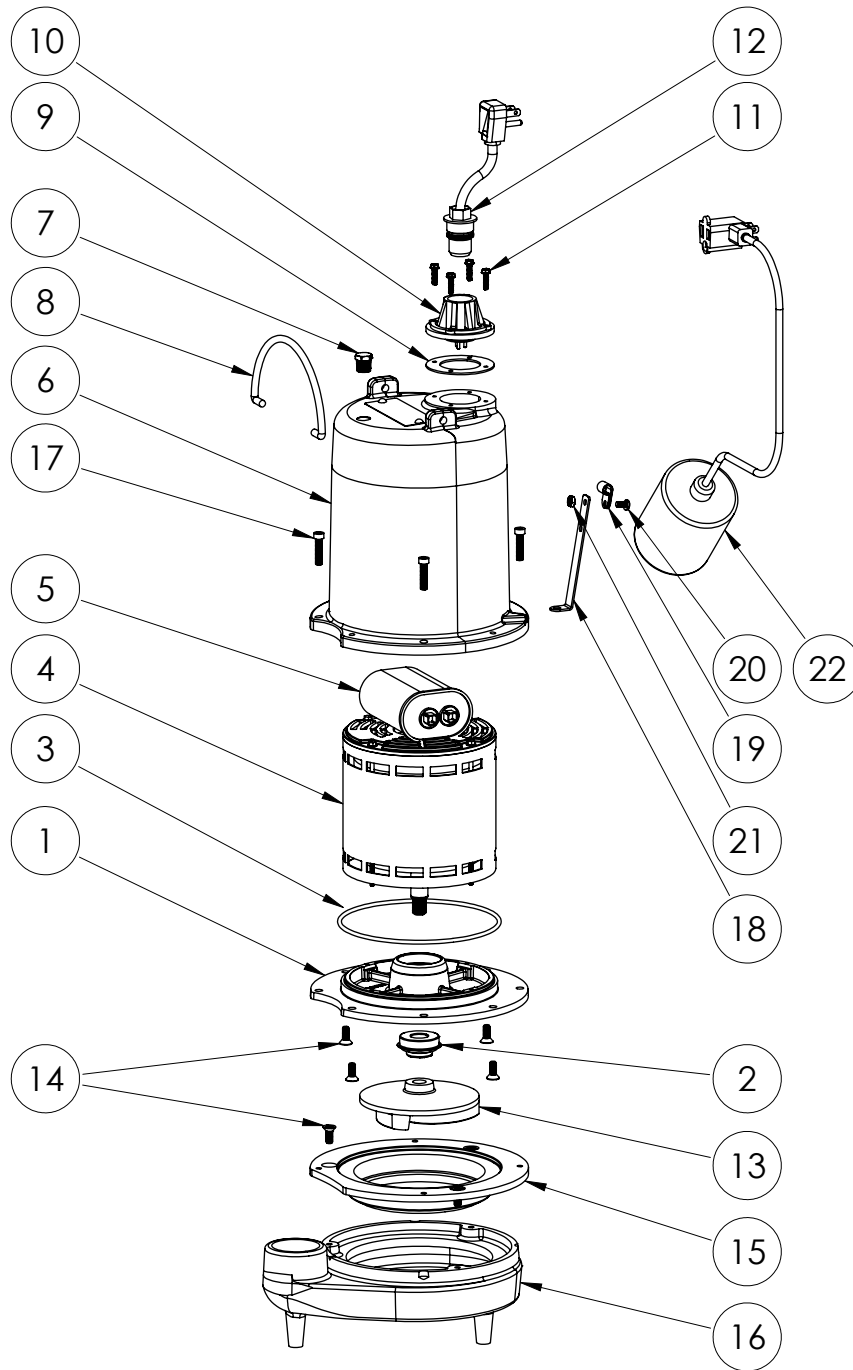


FL61A (B61)



FL61AB61

FL61A**FL61A (B61)**

| # | PART # | DESCRIPTION | QTY | Note |
|----|---------|--|-----|------|
| 1 | 532600R | MOTOR SUPPORT PLATE | 1 | |
| 2 | K001717 | KIT, 5/8 UNITIZED 5120000 AND LIP SEAL 5860000 | 1 | |
| 3 | 5617000 | O-RING | 1 | |
| 4 | 5394000 | MOTOR | 1 | [1] |
| 5 | 53080E0 | CAPACITOR | 1 | [1] |
| 6 | 531400R | MOTOR COVER | 1 | [1] |
| 7 | 50710A0 | PIPE PLUG, 1/4" HEX HD BRASS NPTF | 1 | |
| 8 | K001095 | STAINLESS STEEL HANDLE | 1 | |
| 9 | 5060000 | CORD PLATE GASKET | 1 | |
| 10 | 5014000 | CORD PLATE | 1 | |
| 11 | 8064000 | #8-32 x 5/8 HEX WASHER HEAD SCREW | 4 | |
| 12 | K001010 | POWER CORD, 115V, 10 FOOT CORD | 1 | |
| 13 | 53030A0 | IMPELLER, CAST IRON | 1 | |
| 14 | 8018000 | 1/4-20 x 5/8 SLOTTED FLAT HEAD BOLT | 7 | |
| 15 | 530200R | ADAPTER PLATE | 1 | |
| 16 | 530100R | VOLUTE HOUSING | 1 | |
| 17 | 8091000 | 1/4-20 x 1 HEX SOCKET HEAD BOLT | 4 | |
| 18 | 5070000 | FLOAT SWITCH SUPPORT | 1 | |
| 19 | 8067000 | CABLE CLAMP | 1 | |
| 20 | 8082000 | #10-24 x 3/8 EPOXY LOCK SCREW | 1 | |
| 21 | 8002000 | #10-24 STAINLESS STEEL HEX | 1 | |
| 22 | K001063 | FLOAT SWITCH, 115V, 10 FOOT CORD | 1 | |

PART NOTES:

[1] - Part requires factory authorized service. Contact Liberty Pumps at 1-800-543-2550