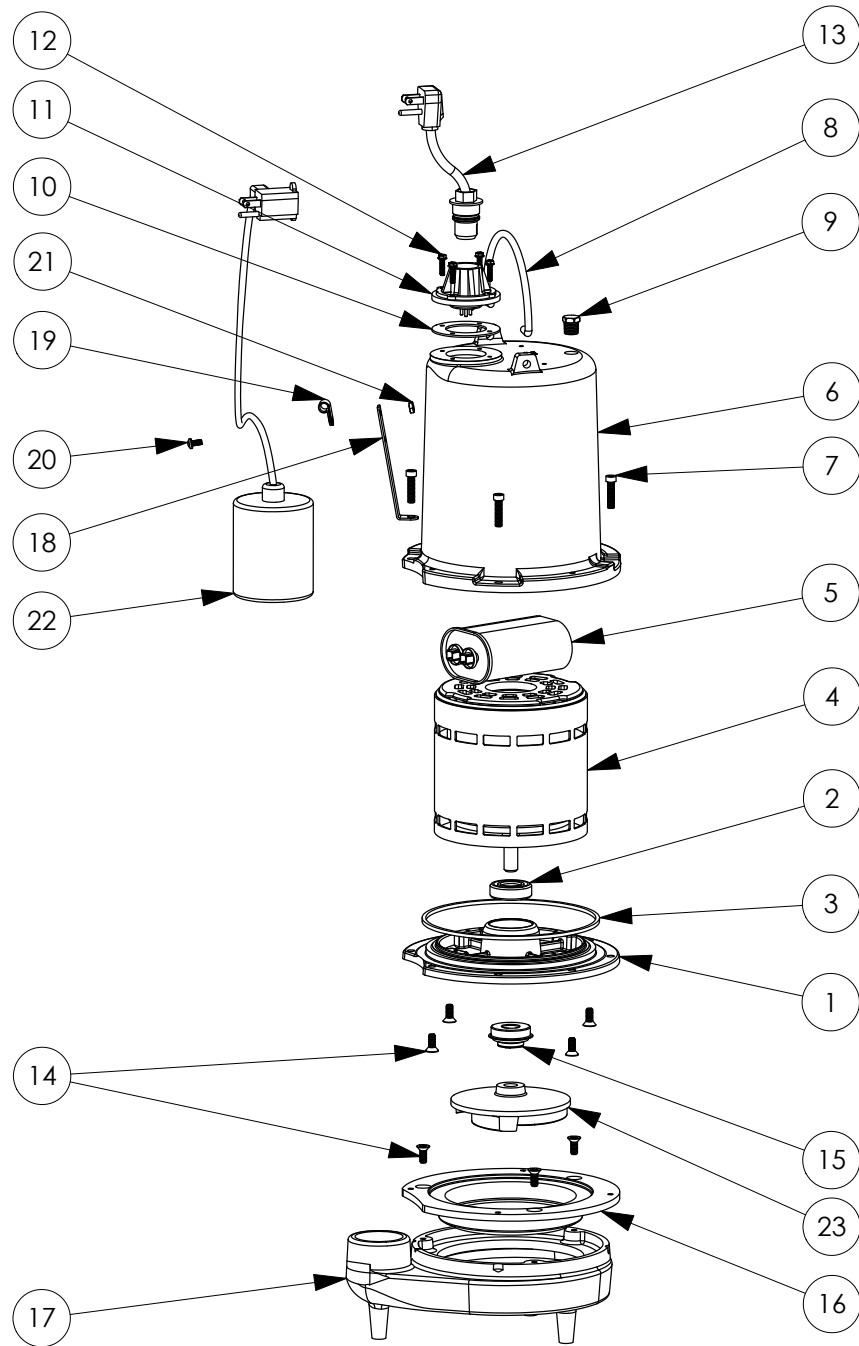


FL62A

FL62A (B10)



FL62A**FL62A (B10)**

#	PART #	DESCRIPTION	QTY	Note
1	510100R	MOTOR SUPPORT PLATE	1	
2	5124000	BEARING	1	
3	5107000	MOTOR COVER SEALRING	1	[1]
4	5394000	MOTOR	1	[1]
5	5308000	CAPACITOR	1	
6	527700R	MOTOR COVER	1	
7	8091000	1/4-20 x 1 HEX SOCKET HEAD BOLT	4	
8	K001095	STAINLESS STEEL HANDLE	1	
9	5071000	BRASS OIL PLUG	1	
10	5060000	CORD PLATE GASKET	1	
11	5014000	CORD PLATE	1	
12	8064000	#8-32 x 5/8 HEX WASHER HEAD SCREW#8-32 x 5/8 HEX WASHER HEAD	4	
13	K001058	POWER CORD, 10FT. 230VPOWER CORD, 10ft 230V	1	
14	8018000	1/4-20 x 5/8 SLOTTED FLAT HEAD BOLT1/4-20X5/8 SLOTTED FLAT HEAD BOLT	7	
15	K001717	KIT, 5/8 UNITIZED 5120000 AND LIP SEAL 58600001/2 INCH UNITIZED SHAFT SEAL	1	
16	530200R	ADAPTER PLATE	1	
17	530100R	VOLUTE HOUSING	1	
18	5070000	FLOAT SWITCH SUPPORTSUPPORT, SWITCH ft98	1	
19	8067000	CABLE CLAMP	1	
20	8082000	#10-24 x 3/8 EPOXY LOCK SCREW	1	
21	8002000	#10-24 STAINLESS STEEL HEX#10-24 HEX STAINLESS STEEL NUT	1	
22	K001065	61290A0 FLOAT SWITCH, 230V, 10 FOOT CORDPUMP SWITCH, 230V 10ft CORD	1	
23	53030A0	IMPELLER, CAST IRON	1	

PART NOTES:

[1] - Part requires factory authorized service. Contact Liberty Pumps at 1-800-543-2550